

VERDAD RESOURCES

**WATTENBERG FIELD
1N-65W-31 COUNTY LINE 3130 PAD
COUNTY LINE 3130-05H**

Wellbore #2

Plan: Design #1

Standard Planning Report

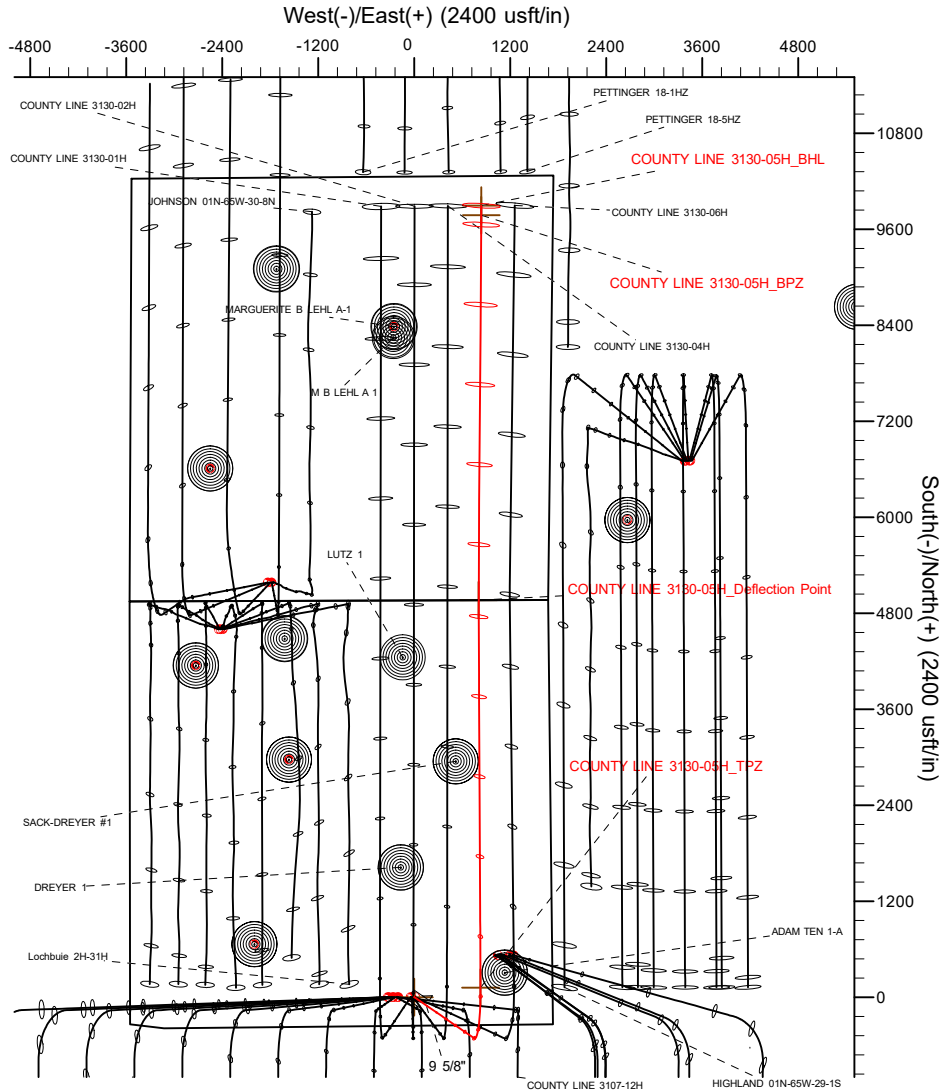
10 May, 2021

Project: WATTENBERG FIELD
Site: 1N-65W-31 COUNTY LINE 3130 PAD
Well: COUNTY LINE 3130-05H
Wellbore: Wellbore #2
Design: Design #1

VERDAD RESOURCES

CASING DETAILS

TVD	MD	Name	Size
2297.00	2315.47	9 5/8"	9-5/8

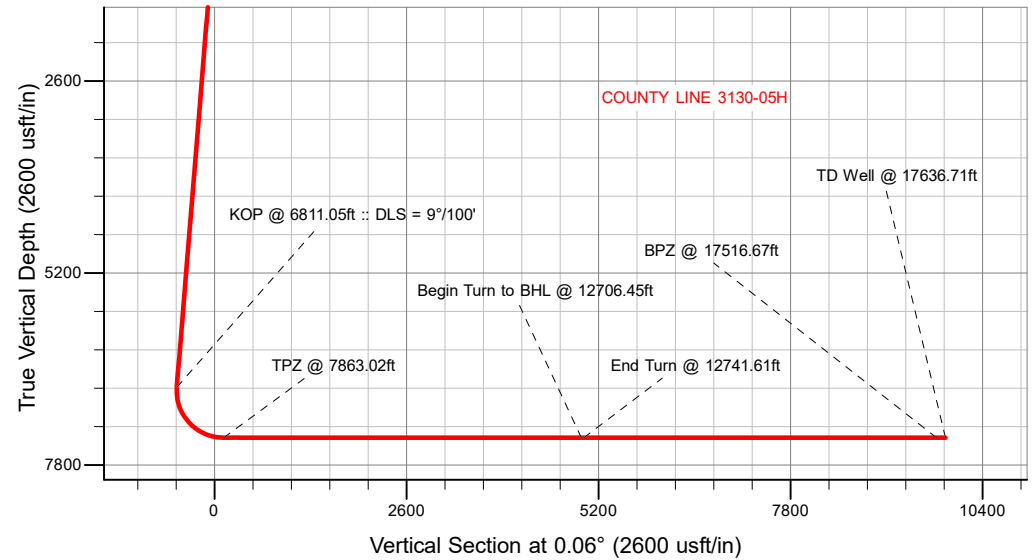


SECTION DETAILS

MD	Inc	Azi	TVD	+N/-S	+E/-W	Dleg	TFace	Vsect	Target
0.00	0.00	0.00	0.00	0.00	0.00	0.00	0.00	0.00	
247.75	0.00	0.00	247.75	0.00	0.00	0.00	0.00	0.00	
659.25	8.23	124.43	657.84	-16.68	24.33	2.00	124.43	-16.66	
6811.05	8.23	124.43	6746.28	-514.58	750.68	0.00	0.00	-513.79	
7863.02	90.00	359.70	7430.00	120.33	828.69	9.00	-124.45	121.20	
12706.45	90.00	359.70	7430.00	4963.70	803.72	0.00	0.00	4964.54	COUNTY LINE 3130-05H_Deflection Point
12741.61	90.00	0.41	7430.00	4998.86	803.76	2.00	90.00	4999.70	
17636.71	90.00	0.41	7430.00	9893.83	838.60	0.00	0.00	9894.71	COUNTY LINE 3130-05H_BHL

WELLBORE TARGET DETAILS (LAT/LONG)

Name	MD	TVD	+N/-S	+E/-W	Latitude	Longitude
COUNTY LINE 3130-05H_SHL	0.00	0.00	0.00	0.00	40.001457	-104.703450
COUNTY LINE 3130-05H_TPZ	7863.02	7430.00	120.33	828.69	40.001788	-104.700492
COUNTY LINE 3130-05H_BPZ	17516.67	7430.00	9773.80	837.76	40.028288	-104.700458
COUNTY LINE 3130-05H_BHL	17636.71	7430.00	9893.83	838.60	40.028617	-104.700455

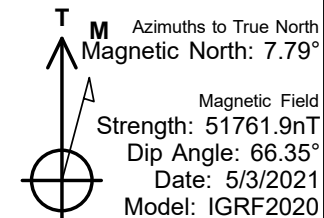


SHL
340' FSL
1730' FEL

Top of Production Zone
460' FSL
900' FEL

Bottom of Production Zone
490' FNL
897' FEL

BHL
370' FNL
898' FEL



WELL DETAILS: COUNTY LINE 3130-05H

GL = 5045'

RKB = 24' @ 5089.00usft (RIG)

Plan: Design #1 (COUNTY LINE 3130-05H/Wellbore #2)

Date: 5/10/2021

VERDAD RESOURCES

Planning Report

Database:	EDM 5000.16 Single User Db	Local Co-ordinate Reference:	Well COUNTY LINE 3130-05H
Company:	VERDAD RESOURCES	TVD Reference:	RKB = 24' @ 5069.00usft (RIG)
Project:	WATTENBERG FIELD	MD Reference:	RKB = 24' @ 5069.00usft (RIG)
Site:	1N-65W-31 COUNTY LINE 3130 PAD	North Reference:	True
Well:	COUNTY LINE 3130-05H	Survey Calculation Method:	Minimum Curvature
Wellbore:	Wellbore #2		
Design:	Design #1		

Project	WATTENBERG FIELD		
Map System:	US State Plane 1983	System Datum:	Mean Sea Level
Geo Datum:	North American Datum 1983		
Map Zone:	Colorado Northern Zone		

Site	1N-65W-31 COUNTY LINE 3130 PAD			
Site Position:		Northing:	1,244,936.30 usft	Latitude: 40.002996
From:	Lat/Long	Easting:	3,222,683.37 usft	Longitude: -104.705093
Position Uncertainty:	0.00 usft	Slot Radius:	13-3/16 "	

Well	COUNTY LINE 3130-05H			
Well Position	+N/-S	0.00 usft	Northing:	1,244,379.82 usft
	+E/-W	0.00 usft	Easting:	3,223,148.63 usft
Position Uncertainty		3.28 usft	Wellhead Elevation:	usft
Grid Convergence:		0.51 °	Ground Level:	5,045.00 usft

Wellbore	Wellbore #2				
Magnetics	Model Name	Sample Date	Declination (°)	Dip Angle (°)	Field Strength (nT)
	IGRF202013	5/3/2021	7.79	66.35	51,761.93875986

Design	Design #1				
Audit Notes:					
Version:		Phase:	PLAN	Tie On Depth:	0.00
Vertical Section:	Depth From (TVD) (usft)	+N/-S (usft)	+E/-W (usft)	Direction (°)	
	0.00	0.00	0.00	0.06	

Plan Survey Tool Program		Date	5/10/2021		
Depth From (usft)	Depth To (usft)	Survey (Wellbore)	Tool Name	Remarks	
1	0.00	2,297.00	Design #1 (Wellbore #2)	ISCWSA MWD	
				Fixed:v2:standard declination	
2	2,297.00	17,636.71	Design #1 (Wellbore #2)	ISCWSA MWD	
				Fixed:v2:standard declination	

VERDAD RESOURCES

Planning Report

Database:	EDM 5000.16 Single User Db	Local Co-ordinate Reference:	Well COUNTY LINE 3130-05H
Company:	VERDAD RESOURCES	TVD Reference:	RKB = 24' @ 5069.00usft (RIG)
Project:	WATTENBERG FIELD	MD Reference:	RKB = 24' @ 5069.00usft (RIG)
Site:	1N-65W-31 COUNTY LINE 3130 PAD	North Reference:	True
Well:	COUNTY LINE 3130-05H	Survey Calculation Method:	Minimum Curvature
Wellbore:	Wellbore #2		
Design:	Design #1		

Plan Sections										
Measured Depth (usft)	Inclination (°)	Azimuth (°)	Vertical Depth (usft)	+N/-S (usft)	+E/-W (usft)	Dogleg Rate (°/100usft)	Build Rate (°/100usft)	Turn Rate (°/100usft)	TFO (°)	Target
0.00	0.00	0.00	0.00	0.00	0.00	0.00	0.00	0.00	0.00	
247.75	0.00	0.00	247.75	0.00	0.00	0.00	0.00	0.00	0.00	
659.25	8.23	124.43	657.84	-16.68	24.33	2.00	2.00	0.00	124.43	
6,811.05	8.23	124.43	6,746.28	-514.58	750.68	0.00	0.00	0.00	0.00	
7,863.02	90.00	359.70	7,430.00	120.33	828.69	9.00	7.77	-11.86	-124.45	
12,706.46	90.00	359.70	7,430.00	4,963.70	803.72	0.00	0.00	0.00	0.00	COUNTY LINE 3130-
12,741.61	90.00	0.41	7,430.00	4,998.86	803.76	2.00	0.00	2.00	90.00	
17,636.71	90.00	0.41	7,430.00	9,893.83	838.60	0.00	0.00	0.00	0.00	COUNTY LINE 3130-

VERDAD RESOURCES

Planning Report

Database:	EDM 5000.16 Single User Db	Local Co-ordinate Reference:	Well COUNTY LINE 3130-05H
Company:	VERDAD RESOURCES	TVD Reference:	RKB = 24' @ 5069.00usft (RIG)
Project:	WATTENBERG FIELD	MD Reference:	RKB = 24' @ 5069.00usft (RIG)
Site:	1N-65W-31 COUNTY LINE 3130 PAD	North Reference:	True
Well:	COUNTY LINE 3130-05H	Survey Calculation Method:	Minimum Curvature
Wellbore:	Wellbore #2		
Design:	Design #1		

Planned Survey									
Measured Depth (usft)	Inclination (°)	Azimuth (°)	Vertical Depth (usft)	+N/-S (usft)	+E/-W (usft)	Vertical Section (usft)	Dogleg Rate (°/100usft)	Build Rate (°/100usft)	Turn Rate (°/100usft)
0.00	0.00	0.00	0.00	0.00	0.00	0.00	0.00	0.00	0.00
100.00	0.00	0.00	100.00	0.00	0.00	0.00	0.00	0.00	0.00
200.00	0.00	0.00	200.00	0.00	0.00	0.00	0.00	0.00	0.00
247.75	0.00	0.00	247.75	0.00	0.00	0.00	0.00	0.00	0.00
Begin Nudge @ 247.75ft									
300.00	1.04	124.43	300.00	-0.27	0.39	-0.27	2.00	2.00	0.00
400.00	3.04	124.43	399.93	-2.29	3.34	-2.28	2.00	2.00	0.00
500.00	5.04	124.43	499.67	-6.28	9.15	-6.27	2.00	2.00	0.00
600.00	7.04	124.43	599.11	-12.23	17.84	-12.21	2.00	2.00	0.00
659.25	8.23	124.43	657.84	-16.68	24.33	-16.66	2.00	2.00	0.00
Hold Tangent @ 659.25ft									
700.00	8.23	124.43	698.17	-19.98	29.15	-19.95	0.00	0.00	0.00
800.00	8.23	124.43	797.14	-28.07	40.95	-28.03	0.00	0.00	0.00
900.00	8.23	124.43	896.11	-36.17	52.76	-36.11	0.00	0.00	0.00
1,000.00	8.23	124.43	995.08	-44.26	64.57	-44.19	0.00	0.00	0.00
1,100.00	8.23	124.43	1,094.05	-52.35	76.37	-52.27	0.00	0.00	0.00
1,200.00	8.23	124.43	1,193.02	-60.45	88.18	-60.35	0.00	0.00	0.00
1,300.00	8.23	124.43	1,291.99	-68.54	99.99	-68.44	0.00	0.00	0.00
1,400.00	8.23	124.43	1,390.96	-76.63	111.80	-76.52	0.00	0.00	0.00
1,500.00	8.23	124.43	1,489.93	-84.73	123.60	-84.60	0.00	0.00	0.00
1,600.00	8.23	124.43	1,588.90	-92.82	135.41	-92.68	0.00	0.00	0.00
1,700.00	8.23	124.43	1,687.87	-100.91	147.22	-100.76	0.00	0.00	0.00
1,800.00	8.23	124.43	1,786.84	-109.01	159.02	-108.84	0.00	0.00	0.00
1,900.00	8.23	124.43	1,885.81	-117.10	170.83	-116.92	0.00	0.00	0.00
2,000.00	8.23	124.43	1,984.78	-125.20	182.64	-125.00	0.00	0.00	0.00
2,100.00	8.23	124.43	2,083.75	-133.29	194.44	-133.08	0.00	0.00	0.00
2,200.00	8.23	124.43	2,182.72	-141.38	206.25	-141.17	0.00	0.00	0.00
2,300.00	8.23	124.43	2,281.69	-149.48	218.06	-149.25	0.00	0.00	0.00
2,315.47	8.23	124.43	2,297.00	-150.73	219.89	-150.50	0.00	0.00	0.00
9 5/8"									
2,400.00	8.23	124.43	2,380.66	-157.57	229.87	-157.33	0.00	0.00	0.00
2,500.00	8.23	124.43	2,479.63	-165.66	241.67	-165.41	0.00	0.00	0.00
2,600.00	8.23	124.43	2,578.60	-173.76	253.48	-173.49	0.00	0.00	0.00
2,700.00	8.23	124.43	2,677.57	-181.85	265.29	-181.57	0.00	0.00	0.00
2,800.00	8.23	124.43	2,776.54	-189.94	277.09	-189.65	0.00	0.00	0.00
2,900.00	8.23	124.43	2,875.51	-198.04	288.90	-197.73	0.00	0.00	0.00
3,000.00	8.23	124.43	2,974.48	-206.13	300.71	-205.82	0.00	0.00	0.00
3,100.00	8.23	124.43	3,073.45	-214.22	312.51	-213.90	0.00	0.00	0.00
3,200.00	8.23	124.43	3,172.42	-222.32	324.32	-221.98	0.00	0.00	0.00
3,300.00	8.23	124.43	3,271.39	-230.41	336.13	-230.06	0.00	0.00	0.00
3,400.00	8.23	124.43	3,370.36	-238.50	347.94	-238.14	0.00	0.00	0.00
3,500.00	8.23	124.43	3,469.33	-246.60	359.74	-246.22	0.00	0.00	0.00
3,600.00	8.23	124.43	3,568.30	-254.69	371.55	-254.30	0.00	0.00	0.00
3,700.00	8.23	124.43	3,667.27	-262.79	383.36	-262.38	0.00	0.00	0.00
3,800.00	8.23	124.43	3,766.24	-270.88	395.16	-270.46	0.00	0.00	0.00
3,900.00	8.23	124.43	3,865.21	-278.97	406.97	-278.55	0.00	0.00	0.00
4,000.00	8.23	124.43	3,964.18	-287.07	418.78	-286.63	0.00	0.00	0.00
4,100.00	8.23	124.43	4,063.15	-295.16	430.59	-294.71	0.00	0.00	0.00
4,200.00	8.23	124.43	4,162.12	-303.25	442.39	-302.79	0.00	0.00	0.00
4,300.00	8.23	124.43	4,261.09	-311.35	454.20	-310.87	0.00	0.00	0.00
4,400.00	8.23	124.43	4,360.06	-319.44	466.01	-318.95	0.00	0.00	0.00
4,500.00	8.23	124.43	4,459.03	-327.53	477.81	-327.03	0.00	0.00	0.00
4,600.00	8.23	124.43	4,558.00	-335.63	489.62	-335.11	0.00	0.00	0.00

VERDAD RESOURCES

Planning Report

Database:	EDM 5000.16 Single User Db	Local Co-ordinate Reference:	Well COUNTY LINE 3130-05H
Company:	VERDAD RESOURCES	TVD Reference:	RKB = 24' @ 5069.00usft (RIG)
Project:	WATTENBERG FIELD	MD Reference:	RKB = 24' @ 5069.00usft (RIG)
Site:	1N-65W-31 COUNTY LINE 3130 PAD	North Reference:	True
Well:	COUNTY LINE 3130-05H	Survey Calculation Method:	Minimum Curvature
Wellbore:	Wellbore #2		
Design:	Design #1		

Planned Survey									
Measured Depth (usft)	Inclination (°)	Azimuth (°)	Vertical Depth (usft)	+N/-S (usft)	+E/-W (usft)	Vertical Section (usft)	Dogleg Rate (°/100usft)	Build Rate (°/100usft)	Turn Rate (°/100usft)
4,700.00	8.23	124.43	4,656.97	-343.72	501.43	-343.19	0.00	0.00	0.00
4,800.00	8.23	124.43	4,755.94	-351.81	513.23	-351.28	0.00	0.00	0.00
4,900.00	8.23	124.43	4,854.91	-359.91	525.04	-359.36	0.00	0.00	0.00
5,000.00	8.23	124.43	4,953.88	-368.00	536.85	-367.44	0.00	0.00	0.00
5,100.00	8.23	124.43	5,052.85	-376.09	548.66	-375.52	0.00	0.00	0.00
5,200.00	8.23	124.43	5,151.82	-384.19	560.46	-383.60	0.00	0.00	0.00
5,300.00	8.23	124.43	5,250.79	-392.28	572.27	-391.68	0.00	0.00	0.00
5,400.00	8.23	124.43	5,349.76	-400.37	584.08	-399.76	0.00	0.00	0.00
5,500.00	8.23	124.43	5,448.73	-408.47	595.88	-407.84	0.00	0.00	0.00
5,600.00	8.23	124.43	5,547.70	-416.56	607.69	-415.93	0.00	0.00	0.00
5,700.00	8.23	124.43	5,646.67	-424.66	619.50	-424.01	0.00	0.00	0.00
5,800.00	8.23	124.43	5,745.64	-432.75	631.30	-432.09	0.00	0.00	0.00
5,900.00	8.23	124.43	5,844.61	-440.84	643.11	-440.17	0.00	0.00	0.00
6,000.00	8.23	124.43	5,943.58	-448.94	654.92	-448.25	0.00	0.00	0.00
6,100.00	8.23	124.43	6,042.55	-457.03	666.73	-456.33	0.00	0.00	0.00
6,200.00	8.23	124.43	6,141.52	-465.12	678.53	-464.41	0.00	0.00	0.00
6,300.00	8.23	124.43	6,240.49	-473.22	690.34	-472.49	0.00	0.00	0.00
6,400.00	8.23	124.43	6,339.46	-481.31	702.15	-480.57	0.00	0.00	0.00
6,500.00	8.23	124.43	6,438.44	-489.40	713.95	-488.66	0.00	0.00	0.00
6,600.00	8.23	124.43	6,537.41	-497.50	725.76	-496.74	0.00	0.00	0.00
6,700.00	8.23	124.43	6,636.38	-505.59	737.57	-504.82	0.00	0.00	0.00
6,800.00	8.23	124.43	6,735.35	-513.68	749.37	-512.90	0.00	0.00	0.00
6,811.05	8.23	124.43	6,746.28	-514.58	750.68	-513.79	0.00	0.00	0.00
KOP @ 6811.05ft :: DLS = 9°/100'									
6,900.00	7.55	63.48	6,834.53	-515.57	761.18	-514.77	9.00	-0.77	-68.52
7,000.00	14.04	28.08	6,932.81	-501.90	772.79	-501.09	9.00	6.50	-35.40
7,100.00	22.33	16.53	7,027.76	-472.93	783.93	-472.10	9.00	8.29	-11.55
7,200.00	31.01	11.11	7,117.05	-429.35	794.32	-428.52	9.00	8.67	-5.41
7,300.00	39.81	7.90	7,198.48	-372.25	803.70	-371.40	9.00	8.81	-3.21
7,400.00	48.68	5.70	7,270.04	-303.03	811.85	-302.17	9.00	8.87	-2.20
7,500.00	57.58	4.03	7,329.98	-223.39	818.57	-222.53	9.00	8.90	-1.67
7,600.00	66.50	2.67	7,376.81	-135.30	823.68	-134.44	9.00	8.92	-1.37
7,700.00	75.43	1.47	7,409.39	-40.92	827.07	-40.06	9.00	8.93	-1.19
7,800.00	84.37	0.38	7,426.90	57.41	828.64	58.28	9.00	8.93	-1.10
7,863.02	90.00	359.70	7,430.00	120.33	828.69	121.20	9.00	8.94	-1.07
TPZ @ 7863.02ft									
7,900.00	90.00	359.70	7,430.00	157.31	828.50	158.18	0.00	0.00	0.00
8,000.00	90.00	359.70	7,430.00	257.31	827.98	258.18	0.00	0.00	0.00
8,100.00	90.00	359.70	7,430.00	357.31	827.46	358.18	0.00	0.00	0.00
8,200.00	90.00	359.70	7,430.00	457.31	826.95	458.17	0.00	0.00	0.00
8,300.00	90.00	359.70	7,430.00	557.31	826.43	558.17	0.00	0.00	0.00
8,400.00	90.00	359.70	7,430.00	657.31	825.92	658.17	0.00	0.00	0.00
8,500.00	90.00	359.70	7,430.00	757.30	825.40	758.17	0.00	0.00	0.00
8,600.00	90.00	359.70	7,430.00	857.30	824.89	858.17	0.00	0.00	0.00
8,700.00	90.00	359.70	7,430.00	957.30	824.37	958.16	0.00	0.00	0.00
8,800.00	90.00	359.70	7,430.00	1,057.30	823.86	1,058.16	0.00	0.00	0.00
8,900.00	90.00	359.70	7,430.00	1,157.30	823.34	1,158.16	0.00	0.00	0.00
9,000.00	90.00	359.70	7,430.00	1,257.30	822.83	1,258.16	0.00	0.00	0.00
9,100.00	90.00	359.70	7,430.00	1,357.30	822.31	1,358.16	0.00	0.00	0.00
9,200.00	90.00	359.70	7,430.00	1,457.29	821.80	1,458.15	0.00	0.00	0.00
9,300.00	90.00	359.70	7,430.00	1,557.29	821.28	1,558.15	0.00	0.00	0.00
9,400.00	90.00	359.70	7,430.00	1,657.29	820.76	1,658.15	0.00	0.00	0.00
9,500.00	90.00	359.70	7,430.00	1,757.29	820.25	1,758.15	0.00	0.00	0.00
9,600.00	90.00	359.70	7,430.00	1,857.29	819.73	1,858.15	0.00	0.00	0.00

VERDAD RESOURCES

Planning Report

Database:	EDM 5000.16 Single User Db	Local Co-ordinate Reference:	Well COUNTY LINE 3130-05H
Company:	VERDAD RESOURCES	TVD Reference:	RKB = 24' @ 5069.00usft (RIG)
Project:	WATTENBERG FIELD	MD Reference:	RKB = 24' @ 5069.00usft (RIG)
Site:	1N-65W-31 COUNTY LINE 3130 PAD	North Reference:	True
Well:	COUNTY LINE 3130-05H	Survey Calculation Method:	Minimum Curvature
Wellbore:	Wellbore #2		
Design:	Design #1		

Planned Survey									
Measured Depth (usft)	Inclination (°)	Azimuth (°)	Vertical Depth (usft)	+N/-S (usft)	+E/-W (usft)	Vertical Section (usft)	Dogleg Rate (°/100usft)	Build Rate (°/100usft)	Turn Rate (°/100usft)
9,700.00	90.00	359.70	7,430.00	1,957.29	819.22	1,958.14	0.00	0.00	0.00
9,800.00	90.00	359.70	7,430.00	2,057.29	818.70	2,058.14	0.00	0.00	0.00
9,900.00	90.00	359.70	7,430.00	2,157.29	818.19	2,158.14	0.00	0.00	0.00
10,000.00	90.00	359.70	7,430.00	2,257.28	817.67	2,258.14	0.00	0.00	0.00
10,100.00	90.00	359.70	7,430.00	2,357.28	817.16	2,358.14	0.00	0.00	0.00
10,200.00	90.00	359.70	7,430.00	2,457.28	816.64	2,458.14	0.00	0.00	0.00
10,300.00	90.00	359.70	7,430.00	2,557.28	816.13	2,558.13	0.00	0.00	0.00
10,400.00	90.00	359.70	7,430.00	2,657.28	815.61	2,658.13	0.00	0.00	0.00
10,500.00	90.00	359.70	7,430.00	2,757.28	815.09	2,758.13	0.00	0.00	0.00
10,600.00	90.00	359.70	7,430.00	2,857.28	814.58	2,858.13	0.00	0.00	0.00
10,700.00	90.00	359.70	7,430.00	2,957.27	814.06	2,958.13	0.00	0.00	0.00
10,800.00	90.00	359.70	7,430.00	3,057.27	813.55	3,058.12	0.00	0.00	0.00
10,900.00	90.00	359.70	7,430.00	3,157.27	813.03	3,158.12	0.00	0.00	0.00
11,000.00	90.00	359.70	7,430.00	3,257.27	812.52	3,258.12	0.00	0.00	0.00
11,100.00	90.00	359.70	7,430.00	3,357.27	812.00	3,358.12	0.00	0.00	0.00
11,200.00	90.00	359.70	7,430.00	3,457.27	811.49	3,458.12	0.00	0.00	0.00
11,300.00	90.00	359.70	7,430.00	3,557.27	810.97	3,558.11	0.00	0.00	0.00
11,400.00	90.00	359.70	7,430.00	3,657.27	810.46	3,658.11	0.00	0.00	0.00
11,500.00	90.00	359.70	7,430.00	3,757.26	809.94	3,758.11	0.00	0.00	0.00
11,600.00	90.00	359.70	7,430.00	3,857.26	809.43	3,858.11	0.00	0.00	0.00
11,700.00	90.00	359.70	7,430.00	3,957.26	808.91	3,958.11	0.00	0.00	0.00
11,800.00	90.00	359.70	7,430.00	4,057.26	808.39	4,058.10	0.00	0.00	0.00
11,900.00	90.00	359.70	7,430.00	4,157.26	807.88	4,158.10	0.00	0.00	0.00
12,000.00	90.00	359.70	7,430.00	4,257.26	807.36	4,258.10	0.00	0.00	0.00
12,100.00	90.00	359.70	7,430.00	4,357.26	806.85	4,358.10	0.00	0.00	0.00
12,200.00	90.00	359.70	7,430.00	4,457.25	806.33	4,458.10	0.00	0.00	0.00
12,300.00	90.00	359.70	7,430.00	4,557.25	805.82	4,558.09	0.00	0.00	0.00
12,400.00	90.00	359.70	7,430.00	4,657.25	805.30	4,658.09	0.00	0.00	0.00
12,500.00	90.00	359.70	7,430.00	4,757.25	804.79	4,758.09	0.00	0.00	0.00
12,600.00	90.00	359.70	7,430.00	4,857.25	804.27	4,858.09	0.00	0.00	0.00
12,700.00	90.00	359.70	7,430.00	4,957.25	803.76	4,958.09	0.00	0.00	0.00
12,706.46	90.00	359.70	7,430.00	4,963.70	803.72	4,964.54	0.00	0.00	0.00
Begin Turn to BHL @ 12706.45ft									
12,741.61	90.00	0.41	7,430.00	4,998.86	803.76	4,999.70	2.00	0.00	2.00
End Turn @ 12741.61ft									
12,800.00	90.00	0.41	7,430.00	5,057.25	804.17	5,058.09	0.00	0.00	0.00
12,900.00	90.00	0.41	7,430.00	5,157.24	804.88	5,158.08	0.00	0.00	0.00
13,000.00	90.00	0.41	7,430.00	5,257.24	805.60	5,258.08	0.00	0.00	0.00
13,100.00	90.00	0.41	7,430.00	5,357.24	806.31	5,358.08	0.00	0.00	0.00
13,200.00	90.00	0.41	7,430.00	5,457.24	807.02	5,458.08	0.00	0.00	0.00
13,300.00	90.00	0.41	7,430.00	5,557.23	807.73	5,558.08	0.00	0.00	0.00
13,400.00	90.00	0.41	7,430.00	5,657.23	808.44	5,658.07	0.00	0.00	0.00
13,500.00	90.00	0.41	7,430.00	5,757.23	809.15	5,758.07	0.00	0.00	0.00
13,600.00	90.00	0.41	7,430.00	5,857.23	809.87	5,858.07	0.00	0.00	0.00
13,700.00	90.00	0.41	7,430.00	5,957.22	810.58	5,958.07	0.00	0.00	0.00
13,800.00	90.00	0.41	7,430.00	6,057.22	811.29	6,058.07	0.00	0.00	0.00
13,900.00	90.00	0.41	7,430.00	6,157.22	812.00	6,158.07	0.00	0.00	0.00
14,000.00	90.00	0.41	7,430.00	6,257.22	812.71	6,258.06	0.00	0.00	0.00
14,100.00	90.00	0.41	7,430.00	6,357.21	813.43	6,358.06	0.00	0.00	0.00
14,200.00	90.00	0.41	7,430.00	6,457.21	814.14	6,458.06	0.00	0.00	0.00
14,300.00	90.00	0.41	7,430.00	6,557.21	814.85	6,558.06	0.00	0.00	0.00
14,400.00	90.00	0.41	7,430.00	6,657.21	815.56	6,658.06	0.00	0.00	0.00
14,500.00	90.00	0.41	7,430.00	6,757.20	816.27	6,758.05	0.00	0.00	0.00
14,600.00	90.00	0.41	7,430.00	6,857.20	816.98	6,858.05	0.00	0.00	0.00

VERDAD RESOURCES

Planning Report

Database:	EDM 5000.16 Single User Db	Local Co-ordinate Reference:	Well COUNTY LINE 3130-05H
Company:	VERDAD RESOURCES	TVD Reference:	RKB = 24' @ 5069.00usft (RIG)
Project:	WATTENBERG FIELD	MD Reference:	RKB = 24' @ 5069.00usft (RIG)
Site:	1N-65W-31 COUNTY LINE 3130 PAD	North Reference:	True
Well:	COUNTY LINE 3130-05H	Survey Calculation Method:	Minimum Curvature
Wellbore:	Wellbore #2		
Design:	Design #1		

Planned Survey										
Measured Depth (usft)	Inclination (°)	Azimuth (°)	Vertical Depth (usft)	+N/-S (usft)	+E/-W (usft)	Vertical Section (usft)	Dogleg Rate (°/100usft)	Build Rate (°/100usft)	Turn Rate (°/100usft)	
14,700.00	90.00	0.41	7,430.00	6,957.20	817.70	6,958.05	0.00	0.00	0.00	
14,800.00	90.00	0.41	7,430.00	7,057.20	818.41	7,058.05	0.00	0.00	0.00	
14,900.00	90.00	0.41	7,430.00	7,157.19	819.12	7,158.05	0.00	0.00	0.00	
15,000.00	90.00	0.41	7,430.00	7,257.19	819.83	7,258.05	0.00	0.00	0.00	
15,100.00	90.00	0.41	7,430.00	7,357.19	820.54	7,358.04	0.00	0.00	0.00	
15,200.00	90.00	0.41	7,430.00	7,457.19	821.25	7,458.04	0.00	0.00	0.00	
15,300.00	90.00	0.41	7,430.00	7,557.18	821.97	7,558.04	0.00	0.00	0.00	
15,400.00	90.00	0.41	7,430.00	7,657.18	822.68	7,658.04	0.00	0.00	0.00	
15,500.00	90.00	0.41	7,430.00	7,757.18	823.39	7,758.04	0.00	0.00	0.00	
15,600.00	90.00	0.41	7,430.00	7,857.18	824.10	7,858.03	0.00	0.00	0.00	
15,700.00	90.00	0.41	7,430.00	7,957.17	824.81	7,958.03	0.00	0.00	0.00	
15,800.00	90.00	0.41	7,430.00	8,057.17	825.52	8,058.03	0.00	0.00	0.00	
15,900.00	90.00	0.41	7,430.00	8,157.17	826.24	8,158.03	0.00	0.00	0.00	
16,000.00	90.00	0.41	7,430.00	8,257.17	826.95	8,258.03	0.00	0.00	0.00	
16,100.00	90.00	0.41	7,430.00	8,357.16	827.66	8,358.02	0.00	0.00	0.00	
16,200.00	90.00	0.41	7,430.00	8,457.16	828.37	8,458.02	0.00	0.00	0.00	
16,300.00	90.00	0.41	7,430.00	8,557.16	829.08	8,558.02	0.00	0.00	0.00	
16,400.00	90.00	0.41	7,430.00	8,657.16	829.79	8,658.02	0.00	0.00	0.00	
16,500.00	90.00	0.41	7,430.00	8,757.15	830.51	8,758.02	0.00	0.00	0.00	
16,600.00	90.00	0.41	7,430.00	8,857.15	831.22	8,858.02	0.00	0.00	0.00	
16,700.00	90.00	0.41	7,430.00	8,957.15	831.93	8,958.01	0.00	0.00	0.00	
16,800.00	90.00	0.41	7,430.00	9,057.15	832.64	9,058.01	0.00	0.00	0.00	
16,900.00	90.00	0.41	7,430.00	9,157.14	833.35	9,158.01	0.00	0.00	0.00	
17,000.00	90.00	0.41	7,430.00	9,257.14	834.06	9,258.01	0.00	0.00	0.00	
17,100.00	90.00	0.41	7,430.00	9,357.14	834.78	9,358.01	0.00	0.00	0.00	
17,200.00	90.00	0.41	7,430.00	9,457.13	835.49	9,458.00	0.00	0.00	0.00	
17,300.00	90.00	0.41	7,430.00	9,557.13	836.20	9,558.00	0.00	0.00	0.00	
17,400.00	90.00	0.41	7,430.00	9,657.13	836.91	9,658.00	0.00	0.00	0.00	
17,500.00	90.00	0.41	7,430.00	9,757.13	837.62	9,758.00	0.00	0.00	0.00	
17,516.67	90.00	0.41	7,430.00	9,773.80	837.74	9,774.67	0.00	0.00	0.00	
BPZ @ 17516.67ft										
17,600.00	90.00	0.41	7,430.00	9,857.12	838.33	9,858.00	0.00	0.00	0.00	
17,636.71	90.00	0.41	7,430.00	9,893.83	838.60	9,894.71	0.00	0.00	0.00	
TD Well @ 17636.71ft										

Casing Points					
Measured Depth (usft)	Vertical Depth (usft)	Name		Casing Diameter (")	Hole Diameter (")
2,315.47	2,297.00	9 5/8"		9-5/8	13-1/2

VERDAD RESOURCES

Planning Report

Database:	EDM 5000.16 Single User Db	Local Co-ordinate Reference:	Well COUNTY LINE 3130-05H
Company:	VERDAD RESOURCES	TVD Reference:	RKB = 24' @ 5069.00usft (RIG)
Project:	WATTENBERG FIELD	MD Reference:	RKB = 24' @ 5069.00usft (RIG)
Site:	1N-65W-31 COUNTY LINE 3130 PAD	North Reference:	True
Well:	COUNTY LINE 3130-05H	Survey Calculation Method:	Minimum Curvature
Wellbore:	Wellbore #2		
Design:	Design #1		

Plan Annotations				
Measured Depth (usft)	Vertical Depth (usft)	Local Coordinates		Comment
		+N/-S (usft)	+E/-W (usft)	
247.75	247.75	0.00	0.00	Begin Nudge @ 247.75ft
659.25	657.84	-16.68	24.33	Hold Tangent @ 659.25ft
6,811.05	6,746.28	-514.58	750.68	KOP @ 6811.05ft :: DLS = 9°/100'
7,863.02	7,430.00	120.33	828.69	TPZ @ 7863.02ft
12,706.46	7,430.00	4,963.70	803.72	Begin Turn to BHL @ 12706.45ft
12,741.61	7,430.00	4,998.86	803.76	End Turn @ 12741.61ft
17,516.67	7,430.00	9,773.80	837.74	BPZ @ 17516.67ft
17,636.71	7,430.00	9,893.83	838.60	TD Well @ 17636.71ft