

# **VERDAD RESOURCES**

**WATTENBERG FIELD  
1N-65W-31 COUNTY LINE 3130 PAD  
COUNTY LINE 3130-04H**

**Wellbore #2**

**Plan: Design #1**

## **Standard Planning Report**

**10 May, 2021**

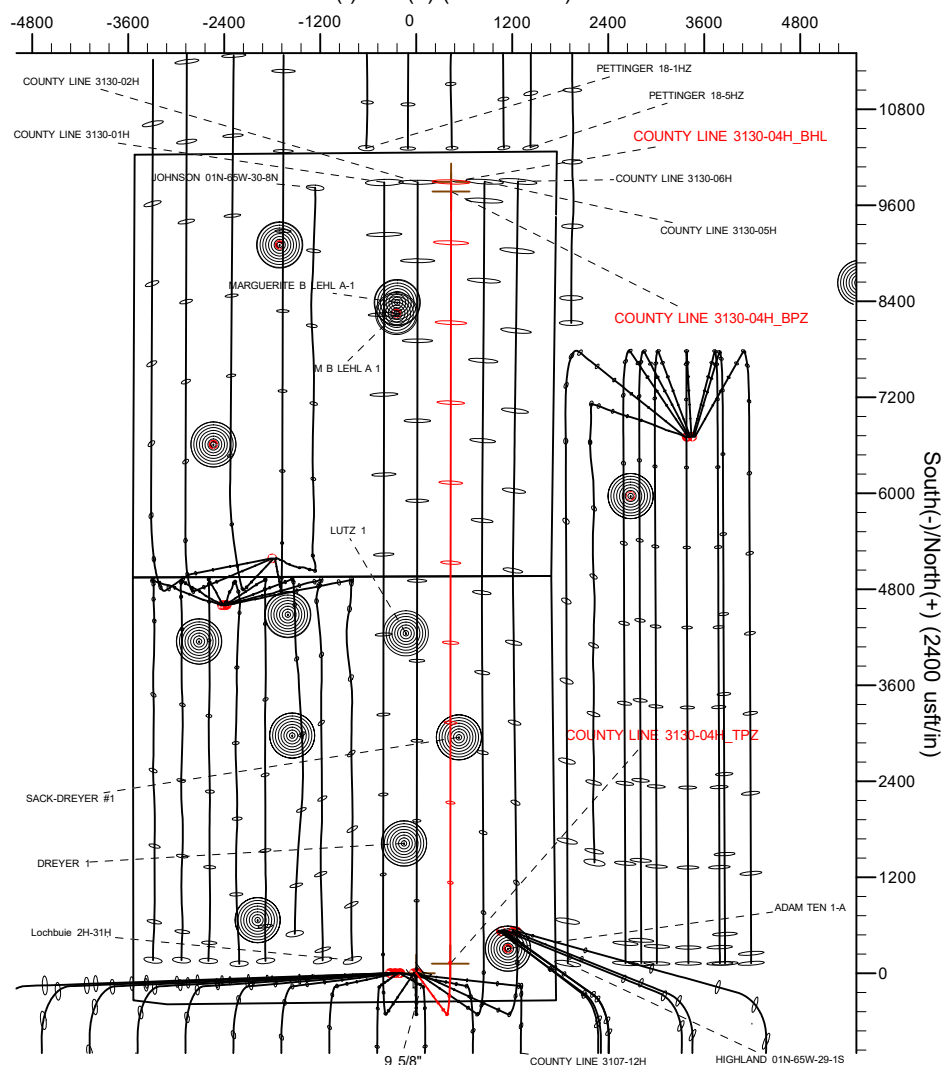
Project: WATTENBERG FIELD  
Site: 1N-65W-31 COUNTY LINE 3130 PAD  
Well: COUNTY LINE 3130-04H  
Wellbore: Wellbore #2  
Design: Design #1

# VERDAD RESOURCES

## CASING DETAILS

TVD	MD	Name	Size
2297.00	2307.16	9 5/8"	9-5/8

West(-)/East(+) (2400 usft/in)



**SHL**  
**340' FSL**  
**1745 FEL**

**Top of Production Zone**  
**460' FSL**  
**1319' FEL**

**Bottom of Production Zone**  
**490' FNL**  
**1315' FEL**

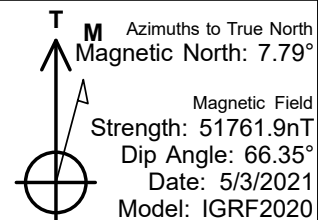
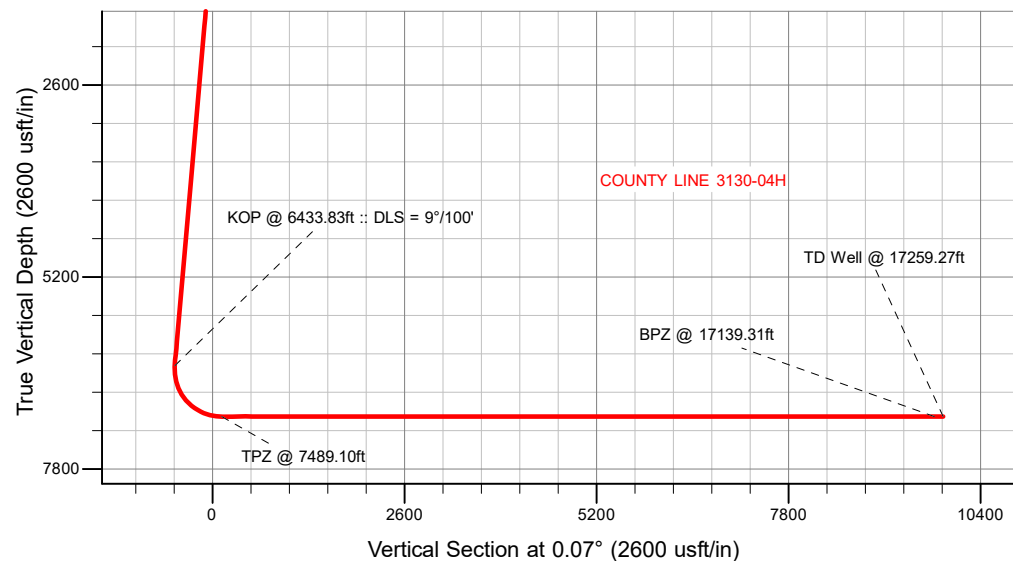
**BHL**  
**370' FNL**  
**1316' FEL**

## SECTION DETAILS

MD	Inc	Azi	TVD	+N/-S	+E/-W	Dleg	TFace	VSect	Target
0.00	0.00	0.00	0.00	0.00	0.00	0.00	0.00	0.00	
358.00	0.00	0.00	358.00	0.00	0.00	0.00	0.00	0.00	
667.50	6.19	143.60	666.90	-13.44	9.91	2.00	143.60	-13.43	
6433.83	6.19	143.60	6399.61	-513.89	378.88	0.00	0.00	-513.43	
7489.10	90.00	0.07	7090.00	120.28	424.12	9.00	-143.37	120.79	
17259.27	90.00	0.07	7090.00	9890.44	435.51	0.00	0.00	9890.96	COUNTY LINE 3130-04H_BHL

## WELLBORE TARGET DETAILS (LAT/LONG)

Name	MD	TVD	+N/-S	+E/-W	Latitude	Longitude
COUNTY LINE 3130-04H_SHL	0.00	0.00	0.00	0.00	40.001457	-104.703503
COUNTY LINE 3130-04H_TPZ	7489.10	7090.00	120.28	424.12	40.001787	-104.701990
COUNTY LINE 3130-04H_BPZ	17139.31	7090.00	9770.48	435.37	40.028279	-104.701949
COUNTY LINE 3130-04H_BHL	17259.27	7090.00	9890.44	435.51	40.028608	-104.701948



## WELL DETAILS: COUNTY LINE 3130-04H

GL = 5045'

RKB = 24' @ 5089.00usft (RIG)

Plan: Design #1 (COUNTY LINE 3130-04H/Wellbore #2)

Date: 5/10/2021

# VERDAD RESOURCES

## Planning Report

<b>Database:</b>	EDM 5000.16 Single User Db	<b>Local Co-ordinate Reference:</b>	Well COUNTY LINE 3130-04H
<b>Company:</b>	VERDAD RESOURCES	<b>TVD Reference:</b>	RKB = 24' @ 5069.00usft (RIG)
<b>Project:</b>	WATTENBERG FIELD	<b>MD Reference:</b>	RKB = 24' @ 5069.00usft (RIG)
<b>Site:</b>	1N-65W-31 COUNTY LINE 3130 PAD	<b>North Reference:</b>	True
<b>Well:</b>	COUNTY LINE 3130-04H	<b>Survey Calculation Method:</b>	Minimum Curvature
<b>Wellbore:</b>	Wellbore #2		
<b>Design:</b>	Design #1		

<b>Project</b>	WATTENBERG FIELD		
<b>Map System:</b>	US State Plane 1983	<b>System Datum:</b>	Mean Sea Level
<b>Geo Datum:</b>	North American Datum 1983		
<b>Map Zone:</b>	Colorado Northern Zone		

<b>Site</b>	1N-65W-31 COUNTY LINE 3130 PAD			
<b>Site Position:</b>		<b>Northing:</b>	1,244,936.30 usft	<b>Latitude:</b> 40.002996
<b>From:</b>	Lat/Long	<b>Easting:</b>	3,222,683.37 usft	<b>Longitude:</b> -104.705093
<b>Position Uncertainty:</b>	0.00 usft	<b>Slot Radius:</b>	13-3/16 "	

<b>Well</b>	COUNTY LINE 3130-04H			
<b>Well Position</b>	<b>+N/-S</b>	0.00 usft	<b>Northing:</b>	1,244,379.68 usft
	<b>+E/-W</b>	0.00 usft	<b>Easting:</b>	3,223,133.62 usft
<b>Position Uncertainty</b>		3.28 usft	<b>Wellhead Elevation:</b>	usft
<b>Grid Convergence:</b>		0.51 °	<b>Ground Level:</b>	5,045.00 usft

<b>Wellbore</b>	Wellbore #2				
<b>Magnetics</b>	<b>Model Name</b>	<b>Sample Date</b>	<b>Declination (°)</b>	<b>Dip Angle (°)</b>	<b>Field Strength (nT)</b>
	IGRF202013	5/3/2021	7.79	66.35	51,761.93315784

<b>Design</b>	Design #1				
<b>Audit Notes:</b>					
<b>Version:</b>		<b>Phase:</b>	PLAN	<b>Tie On Depth:</b>	0.00
<b>Vertical Section:</b>	<b>Depth From (TVD) (usft)</b>	<b>+N/-S (usft)</b>	<b>+E/-W (usft)</b>	<b>Direction (°)</b>	
	0.00	0.00	0.00	0.07	

<b>Plan Survey Tool Program</b>	<b>Date</b>	5/10/2021			
<b>Depth From (usft)</b>	<b>Depth To (usft)</b>	<b>Survey (Wellbore)</b>	<b>Tool Name</b>	<b>Remarks</b>	
1	0.00	2,297.00	Design #1 (Wellbore #2)	ISCWSA MWD	
				Fixed:v2:standard declination	
2	2,297.00	17,259.27	Design #1 (Wellbore #2)	ISCWSA MWD	
				Fixed:v2:standard declination	

# VERDAD RESOURCES

## Planning Report

<b>Database:</b>	EDM 5000.16 Single User Db	<b>Local Co-ordinate Reference:</b>	Well COUNTY LINE 3130-04H
<b>Company:</b>	VERDAD RESOURCES	<b>TVD Reference:</b>	RKB = 24' @ 5069.00usft (RIG)
<b>Project:</b>	WATTENBERG FIELD	<b>MD Reference:</b>	RKB = 24' @ 5069.00usft (RIG)
<b>Site:</b>	1N-65W-31 COUNTY LINE 3130 PAD	<b>North Reference:</b>	True
<b>Well:</b>	COUNTY LINE 3130-04H	<b>Survey Calculation Method:</b>	Minimum Curvature
<b>Wellbore:</b>	Wellbore #2		
<b>Design:</b>	Design #1		

Plan Sections										
Measured Depth (usft)	Inclination (°)	Azimuth (°)	Vertical Depth (usft)	+N/-S (usft)	+E/-W (usft)	Dogleg Rate (°/100usft)	Build Rate (°/100usft)	Turn Rate (°/100usft)	TFO (°)	Target
0.00	0.00	0.00	0.00	0.00	0.00	0.00	0.00	0.00	0.00	
358.00	0.00	0.00	358.00	0.00	0.00	0.00	0.00	0.00	0.00	
667.50	6.19	143.60	666.90	-13.44	9.91	2.00	2.00	0.00	143.60	
6,433.83	6.19	143.60	6,399.61	-513.89	378.88	0.00	0.00	0.00	0.00	
7,489.10	90.00	0.07	7,090.00	120.28	424.12	9.00	7.94	-13.60	-143.37	
17,259.27	90.00	0.07	7,090.00	9,890.44	435.51	0.00	0.00	0.00	0.00	COUNTY LINE 3130-

# VERDAD RESOURCES

## Planning Report

<b>Database:</b>	EDM 5000.16 Single User Db	<b>Local Co-ordinate Reference:</b>	Well COUNTY LINE 3130-04H
<b>Company:</b>	VERDAD RESOURCES	<b>TVD Reference:</b>	RKB = 24' @ 5069.00usft (RIG)
<b>Project:</b>	WATTENBERG FIELD	<b>MD Reference:</b>	RKB = 24' @ 5069.00usft (RIG)
<b>Site:</b>	1N-65W-31 COUNTY LINE 3130 PAD	<b>North Reference:</b>	True
<b>Well:</b>	COUNTY LINE 3130-04H	<b>Survey Calculation Method:</b>	Minimum Curvature
<b>Wellbore:</b>	Wellbore #2		
<b>Design:</b>	Design #1		

Planned Survey									
Measured Depth (usft)	Inclination (°)	Azimuth (°)	Vertical Depth (usft)	+N/-S (usft)	+E/-W (usft)	Vertical Section (usft)	Dogleg Rate (°/100usft)	Build Rate (°/100usft)	Turn Rate (°/100usft)
0.00	0.00	0.00	0.00	0.00	0.00	0.00	0.00	0.00	0.00
100.00	0.00	0.00	100.00	0.00	0.00	0.00	0.00	0.00	0.00
200.00	0.00	0.00	200.00	0.00	0.00	0.00	0.00	0.00	0.00
300.00	0.00	0.00	300.00	0.00	0.00	0.00	0.00	0.00	0.00
358.00	0.00	0.00	358.00	0.00	0.00	0.00	0.00	0.00	0.00
Begin Nudge @ 358.00ft									
400.00	0.84	143.60	400.00	-0.25	0.18	-0.25	2.00	2.00	0.00
500.00	2.84	143.60	499.94	-2.83	2.09	-2.83	2.00	2.00	0.00
600.00	4.84	143.60	599.71	-8.22	6.06	-8.21	2.00	2.00	0.00
667.50	6.19	143.60	666.90	-13.44	9.91	-13.43	2.00	2.00	0.00
Hold Tangent @ 667.50ft									
700.00	6.19	143.60	699.21	-16.26	11.99	-16.25	0.00	0.00	0.00
800.00	6.19	143.60	798.63	-24.94	18.39	-24.92	0.00	0.00	0.00
900.00	6.19	143.60	898.04	-33.62	24.79	-33.59	0.00	0.00	0.00
1,000.00	6.19	143.60	997.46	-42.30	31.19	-42.26	0.00	0.00	0.00
1,100.00	6.19	143.60	1,096.88	-50.98	37.59	-50.93	0.00	0.00	0.00
1,200.00	6.19	143.60	1,196.29	-59.66	43.98	-59.60	0.00	0.00	0.00
1,300.00	6.19	143.60	1,295.71	-68.34	50.38	-68.28	0.00	0.00	0.00
1,400.00	6.19	143.60	1,395.13	-77.02	56.78	-76.95	0.00	0.00	0.00
1,500.00	6.19	143.60	1,494.54	-85.69	63.18	-85.62	0.00	0.00	0.00
1,600.00	6.19	143.60	1,593.96	-94.37	69.58	-94.29	0.00	0.00	0.00
1,700.00	6.19	143.60	1,693.38	-103.05	75.98	-102.96	0.00	0.00	0.00
1,800.00	6.19	143.60	1,792.80	-111.73	82.38	-111.63	0.00	0.00	0.00
1,900.00	6.19	143.60	1,892.21	-120.41	88.77	-120.30	0.00	0.00	0.00
2,000.00	6.19	143.60	1,991.63	-129.09	95.17	-128.97	0.00	0.00	0.00
2,100.00	6.19	143.60	2,091.05	-137.77	101.57	-137.64	0.00	0.00	0.00
2,200.00	6.19	143.60	2,190.46	-146.45	107.97	-146.31	0.00	0.00	0.00
2,300.00	6.19	143.60	2,289.88	-155.13	114.37	-154.99	0.00	0.00	0.00
2,307.16	6.19	143.60	2,297.00	-155.75	114.83	-155.61	0.00	0.00	0.00
9 5/8"									
2,400.00	6.19	143.60	2,389.30	-163.80	120.77	-163.66	0.00	0.00	0.00
2,500.00	6.19	143.60	2,488.71	-172.48	127.17	-172.33	0.00	0.00	0.00
2,600.00	6.19	143.60	2,588.13	-181.16	133.56	-181.00	0.00	0.00	0.00
2,700.00	6.19	143.60	2,687.55	-189.84	139.96	-189.67	0.00	0.00	0.00
2,800.00	6.19	143.60	2,786.97	-198.52	146.36	-198.34	0.00	0.00	0.00
2,900.00	6.19	143.60	2,886.38	-207.20	152.76	-207.01	0.00	0.00	0.00
3,000.00	6.19	143.60	2,985.80	-215.88	159.16	-215.68	0.00	0.00	0.00
3,100.00	6.19	143.60	3,085.22	-224.56	165.56	-224.35	0.00	0.00	0.00
3,200.00	6.19	143.60	3,184.63	-233.24	171.96	-233.02	0.00	0.00	0.00
3,300.00	6.19	143.60	3,284.05	-241.91	178.35	-241.70	0.00	0.00	0.00
3,400.00	6.19	143.60	3,383.47	-250.59	184.75	-250.37	0.00	0.00	0.00
3,500.00	6.19	143.60	3,482.88	-259.27	191.15	-259.04	0.00	0.00	0.00
3,600.00	6.19	143.60	3,582.30	-267.95	197.55	-267.71	0.00	0.00	0.00
3,700.00	6.19	143.60	3,681.72	-276.63	203.95	-276.38	0.00	0.00	0.00
3,800.00	6.19	143.60	3,781.14	-285.31	210.35	-285.05	0.00	0.00	0.00
3,900.00	6.19	143.60	3,880.55	-293.99	216.75	-293.72	0.00	0.00	0.00
4,000.00	6.19	143.60	3,979.97	-302.67	223.14	-302.39	0.00	0.00	0.00
4,100.00	6.19	143.60	4,079.39	-311.34	229.54	-311.06	0.00	0.00	0.00
4,200.00	6.19	143.60	4,178.80	-320.02	235.94	-319.73	0.00	0.00	0.00
4,300.00	6.19	143.60	4,278.22	-328.70	242.34	-328.41	0.00	0.00	0.00
4,400.00	6.19	143.60	4,377.64	-337.38	248.74	-337.08	0.00	0.00	0.00
4,500.00	6.19	143.60	4,477.05	-346.06	255.14	-345.75	0.00	0.00	0.00
4,600.00	6.19	143.60	4,576.47	-354.74	261.54	-354.42	0.00	0.00	0.00

# VERDAD RESOURCES

## Planning Report

<b>Database:</b>	EDM 5000.16 Single User Db	<b>Local Co-ordinate Reference:</b>	Well COUNTY LINE 3130-04H
<b>Company:</b>	VERDAD RESOURCES	<b>TVD Reference:</b>	RKB = 24' @ 5069.00usft (RIG)
<b>Project:</b>	WATTENBERG FIELD	<b>MD Reference:</b>	RKB = 24' @ 5069.00usft (RIG)
<b>Site:</b>	1N-65W-31 COUNTY LINE 3130 PAD	<b>North Reference:</b>	True
<b>Well:</b>	COUNTY LINE 3130-04H	<b>Survey Calculation Method:</b>	Minimum Curvature
<b>Wellbore:</b>	Wellbore #2		
<b>Design:</b>	Design #1		

Planned Survey									
Measured Depth (usft)	Inclination (°)	Azimuth (°)	Vertical Depth (usft)	+N/-S (usft)	+E/-W (usft)	Vertical Section (usft)	Dogleg Rate (°/100usft)	Build Rate (°/100usft)	Turn Rate (°/100usft)
4,700.00	6.19	143.60	4,675.89	-363.42	267.93	-363.09	0.00	0.00	0.00
4,800.00	6.19	143.60	4,775.31	-372.10	274.33	-371.76	0.00	0.00	0.00
4,900.00	6.19	143.60	4,874.72	-380.78	280.73	-380.43	0.00	0.00	0.00
5,000.00	6.19	143.60	4,974.14	-389.45	287.13	-389.10	0.00	0.00	0.00
5,100.00	6.19	143.60	5,073.56	-398.13	293.53	-397.77	0.00	0.00	0.00
5,200.00	6.19	143.60	5,172.97	-406.81	299.93	-406.45	0.00	0.00	0.00
5,300.00	6.19	143.60	5,272.39	-415.49	306.33	-415.12	0.00	0.00	0.00
5,400.00	6.19	143.60	5,371.81	-424.17	312.72	-423.79	0.00	0.00	0.00
5,500.00	6.19	143.60	5,471.22	-432.85	319.12	-432.46	0.00	0.00	0.00
5,600.00	6.19	143.60	5,570.64	-441.53	325.52	-441.13	0.00	0.00	0.00
5,700.00	6.19	143.60	5,670.06	-450.21	331.92	-449.80	0.00	0.00	0.00
5,800.00	6.19	143.60	5,769.47	-458.88	338.32	-458.47	0.00	0.00	0.00
5,900.00	6.19	143.60	5,868.89	-467.56	344.72	-467.14	0.00	0.00	0.00
6,000.00	6.19	143.60	5,968.31	-476.24	351.12	-475.81	0.00	0.00	0.00
6,100.00	6.19	143.60	6,067.73	-484.92	357.51	-484.48	0.00	0.00	0.00
6,200.00	6.19	143.60	6,167.14	-493.60	363.91	-493.16	0.00	0.00	0.00
6,300.00	6.19	143.60	6,266.56	-502.28	370.31	-501.83	0.00	0.00	0.00
6,400.00	6.19	143.60	6,365.98	-510.96	376.71	-510.50	0.00	0.00	0.00
6,433.83	6.19	143.60	6,399.61	-513.89	378.88	-513.43	0.00	0.00	0.00
KOP @ 6433.83ft :: DLS = 9°/100'									
6,500.00	3.82	75.17	6,465.57	-516.20	383.12	-515.74	9.00	-3.59	-103.42
6,600.00	10.63	20.15	6,564.81	-506.67	389.53	-506.19	9.00	6.82	-55.02
6,700.00	19.32	10.66	6,661.33	-481.70	395.78	-481.21	9.00	8.69	-9.49
6,800.00	28.20	6.97	6,752.77	-441.90	401.72	-441.41	9.00	8.88	-3.69
6,900.00	37.14	4.95	6,836.86	-388.26	407.21	-387.76	9.00	8.93	-2.02
7,000.00	46.10	3.62	6,911.55	-322.10	412.10	-321.59	9.00	8.96	-1.33
7,100.00	55.06	2.65	6,974.98	-245.04	416.28	-244.53	9.00	8.97	-0.98
7,200.00	64.04	1.87	7,025.61	-158.99	419.64	-158.47	9.00	8.97	-0.78
7,300.00	73.02	1.19	7,062.18	-66.06	422.11	-65.54	9.00	8.98	-0.67
7,400.00	82.00	0.59	7,083.79	31.46	423.62	31.98	9.00	8.98	-0.61
7,489.10	90.00	0.07	7,090.00	120.28	424.12	120.79	9.00	8.98	-0.58
TPZ @ 7489.10ft									
7,500.00	90.00	0.07	7,090.00	131.17	424.13	131.69	0.00	0.00	0.00
7,600.00	90.00	0.07	7,090.00	231.17	424.25	231.69	0.00	0.00	0.00
7,700.00	90.00	0.07	7,090.00	331.17	424.37	331.69	0.00	0.00	0.00
7,800.00	90.00	0.07	7,090.00	431.17	424.48	431.69	0.00	0.00	0.00
7,900.00	90.00	0.07	7,090.00	531.17	424.60	531.69	0.00	0.00	0.00
8,000.00	90.00	0.07	7,090.00	631.17	424.72	631.69	0.00	0.00	0.00
8,100.00	90.00	0.07	7,090.00	731.17	424.83	731.69	0.00	0.00	0.00
8,200.00	90.00	0.07	7,090.00	831.17	424.95	831.69	0.00	0.00	0.00
8,300.00	90.00	0.07	7,090.00	931.17	425.06	931.69	0.00	0.00	0.00
8,400.00	90.00	0.07	7,090.00	1,031.17	425.18	1,031.69	0.00	0.00	0.00
8,500.00	90.00	0.07	7,090.00	1,131.17	425.30	1,131.69	0.00	0.00	0.00
8,600.00	90.00	0.07	7,090.00	1,231.17	425.41	1,231.69	0.00	0.00	0.00
8,700.00	90.00	0.07	7,090.00	1,331.17	425.53	1,331.69	0.00	0.00	0.00
8,800.00	90.00	0.07	7,090.00	1,431.17	425.65	1,431.69	0.00	0.00	0.00
8,900.00	90.00	0.07	7,090.00	1,531.17	425.76	1,531.69	0.00	0.00	0.00
9,000.00	90.00	0.07	7,090.00	1,631.17	425.88	1,631.69	0.00	0.00	0.00
9,100.00	90.00	0.07	7,090.00	1,731.17	426.00	1,731.69	0.00	0.00	0.00
9,200.00	90.00	0.07	7,090.00	1,831.17	426.11	1,831.69	0.00	0.00	0.00
9,300.00	90.00	0.07	7,090.00	1,931.17	426.23	1,931.69	0.00	0.00	0.00
9,400.00	90.00	0.07	7,090.00	2,031.17	426.35	2,031.69	0.00	0.00	0.00
9,500.00	90.00	0.07	7,090.00	2,131.17	426.46	2,131.69	0.00	0.00	0.00
9,600.00	90.00	0.07	7,090.00	2,231.17	426.58	2,231.69	0.00	0.00	0.00

# VERDAD RESOURCES

## Planning Report

<b>Database:</b>	EDM 5000.16 Single User Db	<b>Local Co-ordinate Reference:</b>	Well COUNTY LINE 3130-04H
<b>Company:</b>	VERDAD RESOURCES	<b>TVD Reference:</b>	RKB = 24' @ 5069.00usft (RIG)
<b>Project:</b>	WATTENBERG FIELD	<b>MD Reference:</b>	RKB = 24' @ 5069.00usft (RIG)
<b>Site:</b>	1N-65W-31 COUNTY LINE 3130 PAD	<b>North Reference:</b>	True
<b>Well:</b>	COUNTY LINE 3130-04H	<b>Survey Calculation Method:</b>	Minimum Curvature
<b>Wellbore:</b>	Wellbore #2		
<b>Design:</b>	Design #1		

Planned Survey									
Measured Depth (usft)	Inclination (°)	Azimuth (°)	Vertical Depth (usft)	+N/-S (usft)	+E/-W (usft)	Vertical Section (usft)	Dogleg Rate (°/100usft)	Build Rate (°/100usft)	Turn Rate (°/100usft)
9,700.00	90.00	0.07	7,090.00	2,331.17	426.70	2,331.69	0.00	0.00	0.00
9,800.00	90.00	0.07	7,090.00	2,431.17	426.81	2,431.69	0.00	0.00	0.00
9,900.00	90.00	0.07	7,090.00	2,531.17	426.93	2,531.69	0.00	0.00	0.00
10,000.00	90.00	0.07	7,090.00	2,631.17	427.05	2,631.69	0.00	0.00	0.00
10,100.00	90.00	0.07	7,090.00	2,731.17	427.16	2,731.69	0.00	0.00	0.00
10,200.00	90.00	0.07	7,090.00	2,831.17	427.28	2,831.69	0.00	0.00	0.00
10,300.00	90.00	0.07	7,090.00	2,931.17	427.40	2,931.69	0.00	0.00	0.00
10,400.00	90.00	0.07	7,090.00	3,031.17	427.51	3,031.69	0.00	0.00	0.00
10,500.00	90.00	0.07	7,090.00	3,131.17	427.63	3,131.69	0.00	0.00	0.00
10,600.00	90.00	0.07	7,090.00	3,231.17	427.75	3,231.69	0.00	0.00	0.00
10,700.00	90.00	0.07	7,090.00	3,331.17	427.86	3,331.69	0.00	0.00	0.00
10,800.00	90.00	0.07	7,090.00	3,431.17	427.98	3,431.69	0.00	0.00	0.00
10,900.00	90.00	0.07	7,090.00	3,531.17	428.10	3,531.69	0.00	0.00	0.00
11,000.00	90.00	0.07	7,090.00	3,631.17	428.21	3,631.69	0.00	0.00	0.00
11,100.00	90.00	0.07	7,090.00	3,731.17	428.33	3,731.69	0.00	0.00	0.00
11,200.00	90.00	0.07	7,090.00	3,831.17	428.45	3,831.69	0.00	0.00	0.00
11,300.00	90.00	0.07	7,090.00	3,931.17	428.56	3,931.69	0.00	0.00	0.00
11,400.00	90.00	0.07	7,090.00	4,031.17	428.68	4,031.69	0.00	0.00	0.00
11,500.00	90.00	0.07	7,090.00	4,131.17	428.80	4,131.69	0.00	0.00	0.00
11,600.00	90.00	0.07	7,090.00	4,231.17	428.91	4,231.69	0.00	0.00	0.00
11,700.00	90.00	0.07	7,090.00	4,331.17	429.03	4,331.69	0.00	0.00	0.00
11,800.00	90.00	0.07	7,090.00	4,431.17	429.15	4,431.69	0.00	0.00	0.00
11,900.00	90.00	0.07	7,090.00	4,531.17	429.26	4,531.69	0.00	0.00	0.00
12,000.00	90.00	0.07	7,090.00	4,631.17	429.38	4,631.69	0.00	0.00	0.00
12,100.00	90.00	0.07	7,090.00	4,731.17	429.50	4,731.69	0.00	0.00	0.00
12,200.00	90.00	0.07	7,090.00	4,831.17	429.61	4,831.69	0.00	0.00	0.00
12,300.00	90.00	0.07	7,090.00	4,931.17	429.73	4,931.69	0.00	0.00	0.00
12,400.00	90.00	0.07	7,090.00	5,031.17	429.85	5,031.69	0.00	0.00	0.00
12,500.00	90.00	0.07	7,090.00	5,131.17	429.96	5,131.69	0.00	0.00	0.00
12,600.00	90.00	0.07	7,090.00	5,231.17	430.08	5,231.69	0.00	0.00	0.00
12,700.00	90.00	0.07	7,090.00	5,331.17	430.20	5,331.69	0.00	0.00	0.00
12,800.00	90.00	0.07	7,090.00	5,431.17	430.31	5,431.69	0.00	0.00	0.00
12,900.00	90.00	0.07	7,090.00	5,531.17	430.43	5,531.69	0.00	0.00	0.00
13,000.00	90.00	0.07	7,090.00	5,631.17	430.55	5,631.69	0.00	0.00	0.00
13,100.00	90.00	0.07	7,090.00	5,731.17	430.66	5,731.69	0.00	0.00	0.00
13,200.00	90.00	0.07	7,090.00	5,831.17	430.78	5,831.69	0.00	0.00	0.00
13,300.00	90.00	0.07	7,090.00	5,931.17	430.90	5,931.69	0.00	0.00	0.00
13,400.00	90.00	0.07	7,090.00	6,031.17	431.01	6,031.69	0.00	0.00	0.00
13,500.00	90.00	0.07	7,090.00	6,131.17	431.13	6,131.69	0.00	0.00	0.00
13,600.00	90.00	0.07	7,090.00	6,231.17	431.25	6,231.69	0.00	0.00	0.00
13,700.00	90.00	0.07	7,090.00	6,331.17	431.36	6,331.69	0.00	0.00	0.00
13,800.00	90.00	0.07	7,090.00	6,431.17	431.48	6,431.69	0.00	0.00	0.00
13,900.00	90.00	0.07	7,090.00	6,531.17	431.59	6,531.69	0.00	0.00	0.00
14,000.00	90.00	0.07	7,090.00	6,631.17	431.71	6,631.69	0.00	0.00	0.00
14,100.00	90.00	0.07	7,090.00	6,731.17	431.83	6,731.69	0.00	0.00	0.00
14,200.00	90.00	0.07	7,090.00	6,831.17	431.94	6,831.69	0.00	0.00	0.00
14,300.00	90.00	0.07	7,090.00	6,931.17	432.06	6,931.69	0.00	0.00	0.00
14,400.00	90.00	0.07	7,090.00	7,031.17	432.18	7,031.69	0.00	0.00	0.00
14,500.00	90.00	0.07	7,090.00	7,131.17	432.29	7,131.69	0.00	0.00	0.00
14,600.00	90.00	0.07	7,090.00	7,231.17	432.41	7,231.69	0.00	0.00	0.00
14,700.00	90.00	0.07	7,090.00	7,331.17	432.53	7,331.69	0.00	0.00	0.00
14,800.00	90.00	0.07	7,090.00	7,431.17	432.64	7,431.69	0.00	0.00	0.00
14,900.00	90.00	0.07	7,090.00	7,531.17	432.76	7,531.69	0.00	0.00	0.00
15,000.00	90.00	0.07	7,090.00	7,631.17	432.88	7,631.69	0.00	0.00	0.00

# VERDAD RESOURCES

## Planning Report

<b>Database:</b>	EDM 5000.16 Single User Db	<b>Local Co-ordinate Reference:</b>	Well COUNTY LINE 3130-04H
<b>Company:</b>	VERDAD RESOURCES	<b>TVD Reference:</b>	RKB = 24' @ 5069.00usft (RIG)
<b>Project:</b>	WATTENBERG FIELD	<b>MD Reference:</b>	RKB = 24' @ 5069.00usft (RIG)
<b>Site:</b>	1N-65W-31 COUNTY LINE 3130 PAD	<b>North Reference:</b>	True
<b>Well:</b>	COUNTY LINE 3130-04H	<b>Survey Calculation Method:</b>	Minimum Curvature
<b>Wellbore:</b>	Wellbore #2		
<b>Design:</b>	Design #1		

Planned Survey										
Measured Depth (usft)	Inclination (°)	Azimuth (°)	Vertical Depth (usft)	+N/-S (usft)	+E/-W (usft)	Vertical Section (usft)	Dogleg Rate (°/100usft)	Build Rate (°/100usft)	Turn Rate (°/100usft)	
15,100.00	90.00	0.07	7,090.00	7,731.17	432.99	7,731.69	0.00	0.00	0.00	
15,200.00	90.00	0.07	7,090.00	7,831.17	433.11	7,831.69	0.00	0.00	0.00	
15,300.00	90.00	0.07	7,090.00	7,931.17	433.23	7,931.69	0.00	0.00	0.00	
15,400.00	90.00	0.07	7,090.00	8,031.17	433.34	8,031.69	0.00	0.00	0.00	
15,500.00	90.00	0.07	7,090.00	8,131.17	433.46	8,131.69	0.00	0.00	0.00	
15,600.00	90.00	0.07	7,090.00	8,231.17	433.58	8,231.69	0.00	0.00	0.00	
15,700.00	90.00	0.07	7,090.00	8,331.17	433.69	8,331.69	0.00	0.00	0.00	
15,800.00	90.00	0.07	7,090.00	8,431.17	433.81	8,431.69	0.00	0.00	0.00	
15,900.00	90.00	0.07	7,090.00	8,531.17	433.93	8,531.69	0.00	0.00	0.00	
16,000.00	90.00	0.07	7,090.00	8,631.17	434.04	8,631.69	0.00	0.00	0.00	
16,100.00	90.00	0.07	7,090.00	8,731.17	434.16	8,731.69	0.00	0.00	0.00	
16,200.00	90.00	0.07	7,090.00	8,831.17	434.28	8,831.69	0.00	0.00	0.00	
16,300.00	90.00	0.07	7,090.00	8,931.17	434.39	8,931.69	0.00	0.00	0.00	
16,400.00	90.00	0.07	7,090.00	9,031.17	434.51	9,031.69	0.00	0.00	0.00	
16,500.00	90.00	0.07	7,090.00	9,131.17	434.63	9,131.69	0.00	0.00	0.00	
16,600.00	90.00	0.07	7,090.00	9,231.17	434.74	9,231.69	0.00	0.00	0.00	
16,700.00	90.00	0.07	7,090.00	9,331.17	434.86	9,331.69	0.00	0.00	0.00	
16,800.00	90.00	0.07	7,090.00	9,431.17	434.98	9,431.69	0.00	0.00	0.00	
16,900.00	90.00	0.07	7,090.00	9,531.17	435.09	9,531.69	0.00	0.00	0.00	
17,000.00	90.00	0.07	7,090.00	9,631.17	435.21	9,631.69	0.00	0.00	0.00	
17,100.00	90.00	0.07	7,090.00	9,731.17	435.33	9,731.69	0.00	0.00	0.00	
17,139.31	90.00	0.07	7,090.00	9,770.48	435.37	9,771.00	0.00	0.00	0.00	
BPZ @ 17139.31ft										
17,200.00	90.00	0.07	7,090.00	9,831.17	435.44	9,831.69	0.00	0.00	0.00	
17,259.27	90.00	0.07	7,090.00	9,890.44	435.51	9,890.96	0.00	0.00	0.00	
TD Well @ 17259.27ft										

Casing Points					
Measured Depth (usft)	Vertical Depth (usft)	Name	Casing Diameter (")	Hole Diameter (")	
2,307.16	2,297.00	9 5/8"	9-5/8	13-1/2	

Plan Annotations					
Measured Depth (usft)	Vertical Depth (usft)	Local Coordinates			
		+N/-S (usft)	+E/-W (usft)	Comment	
358.00	358.00	0.00	0.00	Begin Nudge @ 358.00ft	
667.50	666.90	-13.44	9.91	Hold Tangent @ 667.50ft	
6,433.83	6,399.61	-513.89	378.88	KOP @ 6433.83ft :: DLS = 9°/100'	
7,489.10	7,090.00	120.28	424.12	TPZ @ 7489.10ft	
17,139.31	7,090.00	9,770.48	435.37	BPZ @ 17139.31ft	
17,259.27	7,090.00	9,890.44	435.51	TD Well @ 17259.27ft	