

# **VERDAD RESOURCES**

**WATTENBERG FIELD  
1N-65W-31 COUNTY LINE 3130 PAD  
COUNTY LINE 3130-01H**

**Wellbore #2**

**Plan: Design #1**

## **Standard Planning Report**

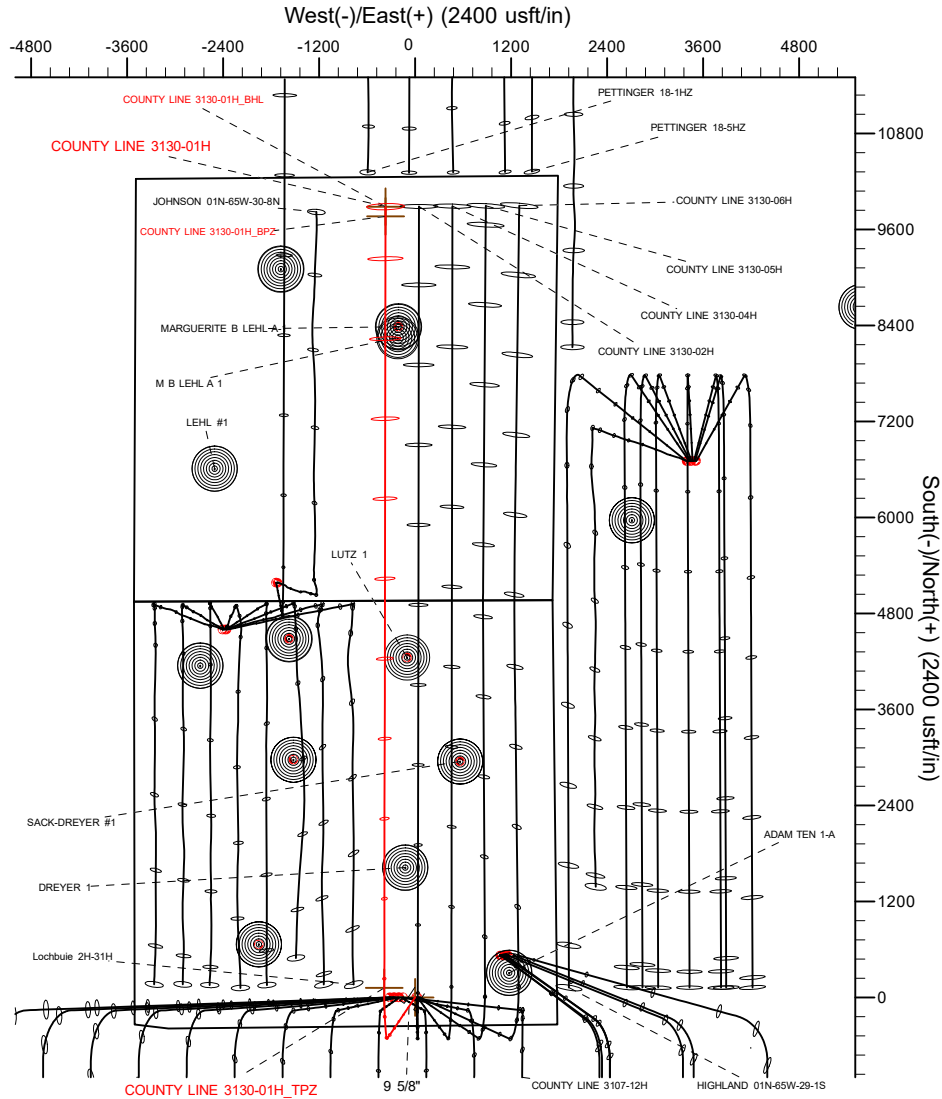
**10 May, 2021**

Project: WATTENBERG FIELD  
Site: 1N-65W-31 COUNTY LINE 3130 PAD  
Well: COUNTY LINE 3130-01H  
Wellbore: Wellbore #2  
Design: Design #1

# VERDAD RESOURCES

## CASING DETAILS

TVD	MD	Name	Size
2297.00	2306.97	9 5/8"	9-5/8

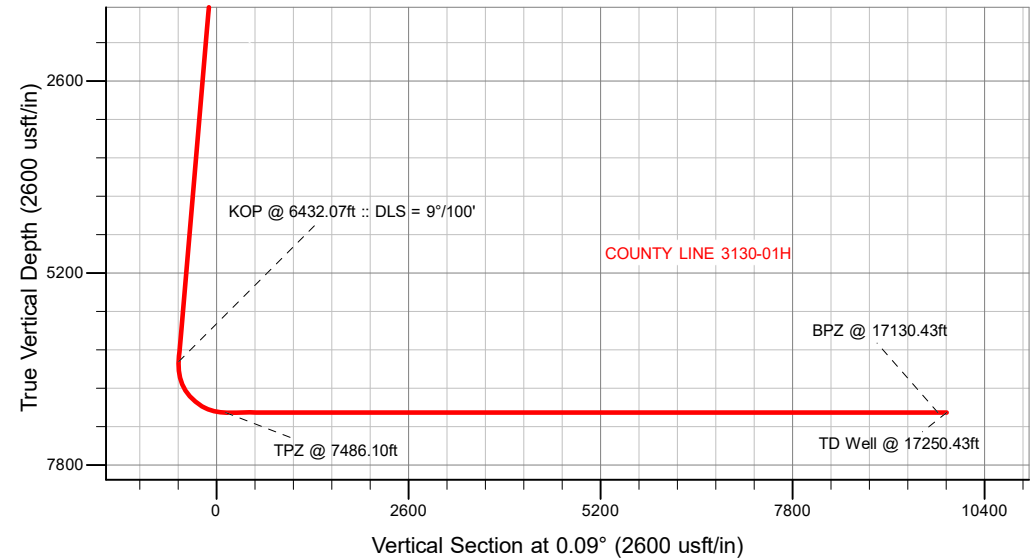


## SECTION DETAILS

MD	Inc	Azi	TVD	+N/-S	+E/-W	Dleg	TFace	VSect	Target
0.00	0.00	0.00	0.00	0.00	0.00	0.00	0.00	0.00	
204.50	0.00	0.00	204.50	0.00	0.00	0.00	0.00	0.00	
497.50	5.86	213.97	496.99	-12.42	-8.36	2.00	213.97	-12.43	
6432.07	5.86	213.97	6400.55	-514.91	-346.92	0.00	0.00	-515.46	
7486.10	90.00	0.09	7090.00	119.48	-385.34	9.00	145.98	118.87	
17250.43	90.00	0.09	7090.00	9883.80	-369.59	0.00	0.00	9883.20	COUNTY LINE 3130-01H_BHL

## WELLBORE TARGET DETAILS (LAT/LONG)

Name	MD	TVD	+N/-S	+E/-W	Latitude	Longitude
COUNTY LINE 3130-01H_SHL	0.00	0.00	0.00	0.00	40.001457	-104.703611
COUNTY LINE 3130-01H_TPZ	7486.10	7090.00	119.48	-385.34	40.001785	-104.704986
COUNTY LINE 3130-01H_BPZ	17130.43	7090.00	9763.80	-369.79	40.028260	-104.704931
COUNTY LINE 3130-01H_BHL	17250.43	7090.00	9883.80	-369.59	40.028590	-104.704930

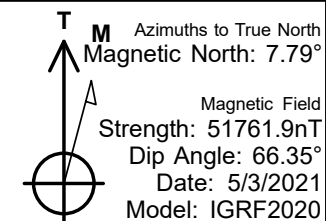


SHL  
340' FSL  
1775' FEL

Top of Production Zone  
460' FSL  
2159' FEL

Bottom of Production Zone  
490' FNL  
2150' FEL

BHL  
370' FNL  
2151' FEL



## WELL DETAILS: COUNTY LINE 3130-01H

GL = 5045'

RKB = 24' @ 5089.00usft (RIG)

Plan: Design #1 (COUNTY LINE 3130-01H/Wellbore #2)

Date: 5/10/2021

# VERDAD RESOURCES

## Planning Report

<b>Database:</b>	EDM 5000.16 Single User Db	<b>Local Co-ordinate Reference:</b>	Well COUNTY LINE 3130-01H
<b>Company:</b>	VERDAD RESOURCES	<b>TVD Reference:</b>	RKB = 24' @ 5069.00usft (RIG)
<b>Project:</b>	WATTENBERG FIELD	<b>MD Reference:</b>	RKB = 24' @ 5069.00usft (RIG)
<b>Site:</b>	1N-65W-31 COUNTY LINE 3130 PAD	<b>North Reference:</b>	True
<b>Well:</b>	COUNTY LINE 3130-01H	<b>Survey Calculation Method:</b>	Minimum Curvature
<b>Wellbore:</b>	Wellbore #2		
<b>Design:</b>	Design #1		

<b>Project</b>	WATTENBERG FIELD		
<b>Map System:</b>	US State Plane 1983	<b>System Datum:</b>	Mean Sea Level
<b>Geo Datum:</b>	North American Datum 1983		
<b>Map Zone:</b>	Colorado Northern Zone		

Site		1N-65W-31 COUNTY LINE 3130 PAD			
Site Position:		Northing:	1,244,936.30 usft	Latitude:	40.002996
From:	Lat/Long	Easting:	3,222,683.37 usft	Longitude:	-104.705093
Position Uncertainty:	0.00 usft	Slot Radius:	13-3/16 "		

Well		COUNTY LINE 3130-01H				
Well Position	+N/-S	0.00 usft	Northing:	1,244,379.39 usft	Latitude:	40.001457
	+E/-W	0.00 usft	Easting:	3,223,103.62 usft	Longitude:	-104.703611
Position Uncertainty		3.28 usft	Wellhead Elevation:	usft	Ground Level:	5,045.00 usft
Grid Convergence:		0.51 °				

<b>Wellbore</b>	Wellbore #2				
<b>Magnetics</b>	<b>Model Name</b>	<b>Sample Date</b>	<b>Declination (°)</b>	<b>Dip Angle (°)</b>	<b>Field Strength (nT)</b>
	IGRF202013	5/3/2021	7.79	66.35	51,761.92194201

<b>Design</b>	Design #1				
<b>Audit Notes:</b>					
<b>Version:</b>		<b>Phase:</b>	PLAN	<b>Tie On Depth:</b>	0.00
<b>Vertical Section:</b>	<b>Depth From (TVD) (usft)</b>	<b>+N/-S (usft)</b>	<b>+E/-W (usft)</b>	<b>Direction (°)</b>	
	0.00	0.00	0.00	0.09	

<b>Plan Survey Tool Program</b>	<b>Date</b>	5/10/2021			
<b>Depth From (usft)</b>	<b>Depth To (usft)</b>	<b>Survey (Wellbore)</b>	<b>Tool Name</b>	<b>Remarks</b>	
1	0.00	2,297.00	Design #1 (Wellbore #2)	ISCWSA MWD	
				Fixed:v2:standard declination	
2	2,297.00	17,250.43	Design #1 (Wellbore #2)	ISCWSA MWD	
				Fixed:v2:standard declination	

# VERDAD RESOURCES

## Planning Report

<b>Database:</b>	EDM 5000.16 Single User Db	<b>Local Co-ordinate Reference:</b>	Well COUNTY LINE 3130-01H
<b>Company:</b>	VERDAD RESOURCES	<b>TVD Reference:</b>	RKB = 24' @ 5069.00usft (RIG)
<b>Project:</b>	WATTENBERG FIELD	<b>MD Reference:</b>	RKB = 24' @ 5069.00usft (RIG)
<b>Site:</b>	1N-65W-31 COUNTY LINE 3130 PAD	<b>North Reference:</b>	True
<b>Well:</b>	COUNTY LINE 3130-01H	<b>Survey Calculation Method:</b>	Minimum Curvature
<b>Wellbore:</b>	Wellbore #2		
<b>Design:</b>	Design #1		

Plan Sections										
Measured Depth (usft)	Inclination (°)	Azimuth (°)	Vertical Depth (usft)	+N/-S (usft)	+E/-W (usft)	Dogleg Rate (°/100usft)	Build Rate (°/100usft)	Turn Rate (°/100usft)	TFO (°)	Target
0.00	0.00	0.00	0.00	0.00	0.00	0.00	0.00	0.00	0.00	
204.50	0.00	0.00	204.50	0.00	0.00	0.00	0.00	0.00	0.00	
497.50	5.86	213.97	496.99	-12.42	-8.36	2.00	2.00	0.00	213.97	
6,432.07	5.86	213.97	6,400.55	-514.91	-346.92	0.00	0.00	0.00	0.00	
7,486.10	90.00	0.09	7,090.00	119.48	-385.34	9.00	7.98	13.86	145.98	
17,250.43	90.00	0.09	7,090.00	9,883.80	-369.59	0.00	0.00	0.00	0.00	COUNTY LINE 3130-

# VERDAD RESOURCES

## Planning Report

<b>Database:</b>	EDM 5000.16 Single User Db	<b>Local Co-ordinate Reference:</b>	Well COUNTY LINE 3130-01H
<b>Company:</b>	VERDAD RESOURCES	<b>TVD Reference:</b>	RKB = 24' @ 5069.00usft (RIG)
<b>Project:</b>	WATTENBERG FIELD	<b>MD Reference:</b>	RKB = 24' @ 5069.00usft (RIG)
<b>Site:</b>	1N-65W-31 COUNTY LINE 3130 PAD	<b>North Reference:</b>	True
<b>Well:</b>	COUNTY LINE 3130-01H	<b>Survey Calculation Method:</b>	Minimum Curvature
<b>Wellbore:</b>	Wellbore #2		
<b>Design:</b>	Design #1		

Planned Survey									
Measured Depth (usft)	Inclination (°)	Azimuth (°)	Vertical Depth (usft)	+N/-S (usft)	+E/-W (usft)	Vertical Section (usft)	Dogleg Rate (°/100usft)	Build Rate (°/100usft)	Turn Rate (°/100usft)
0.00	0.00	0.00	0.00	0.00	0.00	0.00	0.00	0.00	0.00
100.00	0.00	0.00	100.00	0.00	0.00	0.00	0.00	0.00	0.00
200.00	0.00	0.00	200.00	0.00	0.00	0.00	0.00	0.00	0.00
204.50	0.00	0.00	204.50	0.00	0.00	0.00	0.00	0.00	0.00
Begin Nudge @ 204.50ft									
300.00	1.91	213.97	299.98	-1.32	-0.89	-1.32	2.00	2.00	0.00
400.00	3.91	213.97	399.85	-5.53	-3.73	-5.54	2.00	2.00	0.00
497.50	5.86	213.97	496.99	-12.42	-8.36	-12.43	2.00	2.00	0.00
Hold Tangent @ 497.50ft									
500.00	5.86	213.97	499.48	-12.63	-8.51	-12.64	0.00	0.00	0.00
600.00	5.86	213.97	598.95	-21.09	-14.21	-21.12	0.00	0.00	0.00
700.00	5.86	213.97	698.43	-29.56	-19.92	-29.59	0.00	0.00	0.00
800.00	5.86	213.97	797.91	-38.03	-25.62	-38.07	0.00	0.00	0.00
900.00	5.86	213.97	897.39	-46.50	-31.33	-46.55	0.00	0.00	0.00
1,000.00	5.86	213.97	996.86	-54.96	-37.03	-55.02	0.00	0.00	0.00
1,100.00	5.86	213.97	1,096.34	-63.43	-42.74	-63.50	0.00	0.00	0.00
1,200.00	5.86	213.97	1,195.82	-71.90	-48.44	-71.97	0.00	0.00	0.00
1,300.00	5.86	213.97	1,295.30	-80.37	-54.15	-80.45	0.00	0.00	0.00
1,400.00	5.86	213.97	1,394.77	-88.83	-59.85	-88.93	0.00	0.00	0.00
1,500.00	5.86	213.97	1,494.25	-97.30	-65.56	-97.40	0.00	0.00	0.00
1,600.00	5.86	213.97	1,593.73	-105.77	-71.26	-105.88	0.00	0.00	0.00
1,700.00	5.86	213.97	1,693.21	-114.23	-76.97	-114.36	0.00	0.00	0.00
1,800.00	5.86	213.97	1,792.68	-122.70	-82.67	-122.83	0.00	0.00	0.00
1,900.00	5.86	213.97	1,892.16	-131.17	-88.37	-131.31	0.00	0.00	0.00
2,000.00	5.86	213.97	1,991.64	-139.64	-94.08	-139.78	0.00	0.00	0.00
2,100.00	5.86	213.97	2,091.12	-148.10	-99.78	-148.26	0.00	0.00	0.00
2,200.00	5.86	213.97	2,190.59	-156.57	-105.49	-156.74	0.00	0.00	0.00
2,300.00	5.86	213.97	2,290.07	-165.04	-111.19	-165.21	0.00	0.00	0.00
2,306.97	5.86	213.97	2,297.00	-165.63	-111.59	-165.80	0.00	0.00	0.00
9 5/8"									
2,400.00	5.86	213.97	2,389.55	-173.51	-116.90	-173.69	0.00	0.00	0.00
2,500.00	5.86	213.97	2,489.03	-181.97	-122.60	-182.17	0.00	0.00	0.00
2,600.00	5.86	213.97	2,588.50	-190.44	-128.31	-190.64	0.00	0.00	0.00
2,700.00	5.86	213.97	2,687.98	-198.91	-134.01	-199.12	0.00	0.00	0.00
2,800.00	5.86	213.97	2,787.46	-207.38	-139.72	-207.59	0.00	0.00	0.00
2,900.00	5.86	213.97	2,886.93	-215.84	-145.42	-216.07	0.00	0.00	0.00
3,000.00	5.86	213.97	2,986.41	-224.31	-151.13	-224.55	0.00	0.00	0.00
3,100.00	5.86	213.97	3,085.89	-232.78	-156.83	-233.02	0.00	0.00	0.00
3,200.00	5.86	213.97	3,185.37	-241.24	-162.54	-241.50	0.00	0.00	0.00
3,300.00	5.86	213.97	3,284.84	-249.71	-168.24	-249.98	0.00	0.00	0.00
3,400.00	5.86	213.97	3,384.32	-258.18	-173.95	-258.45	0.00	0.00	0.00
3,500.00	5.86	213.97	3,483.80	-266.65	-179.65	-266.93	0.00	0.00	0.00
3,600.00	5.86	213.97	3,583.28	-275.11	-185.36	-275.40	0.00	0.00	0.00
3,700.00	5.86	213.97	3,682.75	-283.58	-191.06	-283.88	0.00	0.00	0.00
3,800.00	5.86	213.97	3,782.23	-292.05	-196.77	-292.36	0.00	0.00	0.00
3,900.00	5.86	213.97	3,881.71	-300.52	-202.47	-300.83	0.00	0.00	0.00
4,000.00	5.86	213.97	3,981.19	-308.98	-208.18	-309.31	0.00	0.00	0.00
4,100.00	5.86	213.97	4,080.66	-317.45	-213.88	-317.79	0.00	0.00	0.00
4,200.00	5.86	213.97	4,180.14	-325.92	-219.59	-326.26	0.00	0.00	0.00
4,300.00	5.86	213.97	4,279.62	-334.38	-225.29	-334.74	0.00	0.00	0.00
4,400.00	5.86	213.97	4,379.10	-342.85	-231.00	-343.21	0.00	0.00	0.00
4,500.00	5.86	213.97	4,478.57	-351.32	-236.70	-351.69	0.00	0.00	0.00
4,600.00	5.86	213.97	4,578.05	-359.79	-242.41	-360.17	0.00	0.00	0.00

# VERDAD RESOURCES

## Planning Report

<b>Database:</b>	EDM 5000.16 Single User Db	<b>Local Co-ordinate Reference:</b>	Well COUNTY LINE 3130-01H
<b>Company:</b>	VERDAD RESOURCES	<b>TVD Reference:</b>	RKB = 24' @ 5069.00usft (RIG)
<b>Project:</b>	WATTENBERG FIELD	<b>MD Reference:</b>	RKB = 24' @ 5069.00usft (RIG)
<b>Site:</b>	1N-65W-31 COUNTY LINE 3130 PAD	<b>North Reference:</b>	True
<b>Well:</b>	COUNTY LINE 3130-01H	<b>Survey Calculation Method:</b>	Minimum Curvature
<b>Wellbore:</b>	Wellbore #2		
<b>Design:</b>	Design #1		

Planned Survey									
Measured Depth (usft)	Inclination (°)	Azimuth (°)	Vertical Depth (usft)	+N/-S (usft)	+E/-W (usft)	Vertical Section (usft)	Dogleg Rate (°/100usft)	Build Rate (°/100usft)	Turn Rate (°/100usft)
4,700.00	5.86	213.97	4,677.53	-368.25	-248.11	-368.64	0.00	0.00	0.00
4,800.00	5.86	213.97	4,777.01	-376.72	-253.81	-377.12	0.00	0.00	0.00
4,900.00	5.86	213.97	4,876.48	-385.19	-259.52	-385.60	0.00	0.00	0.00
5,000.00	5.86	213.97	4,975.96	-393.66	-265.22	-394.07	0.00	0.00	0.00
5,100.00	5.86	213.97	5,075.44	-402.12	-270.93	-402.55	0.00	0.00	0.00
5,200.00	5.86	213.97	5,174.92	-410.59	-276.63	-411.02	0.00	0.00	0.00
5,300.00	5.86	213.97	5,274.39	-419.06	-282.34	-419.50	0.00	0.00	0.00
5,400.00	5.86	213.97	5,373.87	-427.52	-288.04	-427.98	0.00	0.00	0.00
5,500.00	5.86	213.97	5,473.35	-435.99	-293.75	-436.45	0.00	0.00	0.00
5,600.00	5.86	213.97	5,572.83	-444.46	-299.45	-444.93	0.00	0.00	0.00
5,700.00	5.86	213.97	5,672.30	-452.93	-305.16	-453.41	0.00	0.00	0.00
5,800.00	5.86	213.97	5,771.78	-461.39	-310.86	-461.88	0.00	0.00	0.00
5,900.00	5.86	213.97	5,871.26	-469.86	-316.57	-470.36	0.00	0.00	0.00
6,000.00	5.86	213.97	5,970.74	-478.33	-322.27	-478.83	0.00	0.00	0.00
6,100.00	5.86	213.97	6,070.21	-486.80	-327.98	-487.31	0.00	0.00	0.00
6,200.00	5.86	213.97	6,169.69	-495.26	-333.68	-495.79	0.00	0.00	0.00
6,300.00	5.86	213.97	6,269.17	-503.73	-339.39	-504.26	0.00	0.00	0.00
6,400.00	5.86	213.97	6,368.65	-512.20	-345.09	-512.74	0.00	0.00	0.00
6,432.07	5.86	213.97	6,400.55	-514.91	-346.92	-515.46	0.00	0.00	0.00
<b>KOP @ 6432.07ft :: DLS = 9°/100'</b>									
6,500.00	3.51	291.02	6,468.30	-517.05	-350.80	-517.60	9.00	-3.47	113.42
6,600.00	10.76	342.57	6,567.53	-507.03	-356.46	-507.59	9.00	7.25	51.55
6,700.00	19.52	350.80	6,663.98	-481.58	-361.94	-482.15	9.00	8.76	8.24
6,800.00	28.42	354.02	6,755.27	-441.34	-367.10	-441.91	9.00	8.91	3.22
6,900.00	37.37	355.80	6,839.15	-387.29	-371.81	-387.87	9.00	8.95	1.77
7,000.00	46.34	356.96	6,913.55	-320.76	-375.96	-321.35	9.00	8.97	1.17
7,100.00	55.32	357.82	6,976.65	-243.39	-379.44	-243.99	9.00	8.98	0.86
7,200.00	64.30	358.51	7,026.89	-157.09	-382.18	-157.69	9.00	8.98	0.69
7,300.00	73.28	359.11	7,063.04	-63.98	-384.10	-64.59	9.00	8.98	0.59
7,400.00	82.26	359.65	7,084.20	33.64	-385.15	33.04	9.00	8.98	0.54
7,486.10	90.00	0.09	7,090.00	119.48	-385.34	118.87	9.00	8.99	0.52
<b>TPZ @ 7486.10ft</b>									
7,500.00	90.00	0.09	7,090.00	133.38	-385.32	132.77	0.00	0.00	0.00
7,600.00	90.00	0.09	7,090.00	233.38	-385.16	232.77	0.00	0.00	0.00
7,700.00	90.00	0.09	7,090.00	333.38	-385.00	332.77	0.00	0.00	0.00
7,800.00	90.00	0.09	7,090.00	433.38	-384.84	432.77	0.00	0.00	0.00
7,900.00	90.00	0.09	7,090.00	533.38	-384.67	532.77	0.00	0.00	0.00
8,000.00	90.00	0.09	7,090.00	633.38	-384.51	632.77	0.00	0.00	0.00
8,100.00	90.00	0.09	7,090.00	733.38	-384.35	732.77	0.00	0.00	0.00
8,200.00	90.00	0.09	7,090.00	833.38	-384.19	832.77	0.00	0.00	0.00
8,300.00	90.00	0.09	7,090.00	933.38	-384.03	932.77	0.00	0.00	0.00
8,400.00	90.00	0.09	7,090.00	1,033.38	-383.87	1,032.77	0.00	0.00	0.00
8,500.00	90.00	0.09	7,090.00	1,133.38	-383.71	1,132.77	0.00	0.00	0.00
8,600.00	90.00	0.09	7,090.00	1,233.38	-383.55	1,232.77	0.00	0.00	0.00
8,700.00	90.00	0.09	7,090.00	1,333.38	-383.38	1,332.77	0.00	0.00	0.00
8,800.00	90.00	0.09	7,090.00	1,433.38	-383.22	1,432.77	0.00	0.00	0.00
8,900.00	90.00	0.09	7,090.00	1,533.38	-383.06	1,532.77	0.00	0.00	0.00
9,000.00	90.00	0.09	7,090.00	1,633.38	-382.90	1,632.77	0.00	0.00	0.00
9,100.00	90.00	0.09	7,090.00	1,733.38	-382.74	1,732.77	0.00	0.00	0.00
9,200.00	90.00	0.09	7,090.00	1,833.38	-382.58	1,832.77	0.00	0.00	0.00
9,300.00	90.00	0.09	7,090.00	1,933.38	-382.42	1,932.77	0.00	0.00	0.00
9,400.00	90.00	0.09	7,090.00	2,033.38	-382.25	2,032.77	0.00	0.00	0.00
9,500.00	90.00	0.09	7,090.00	2,133.38	-382.09	2,132.77	0.00	0.00	0.00
9,600.00	90.00	0.09	7,090.00	2,233.38	-381.93	2,232.77	0.00	0.00	0.00

# VERDAD RESOURCES

## Planning Report

<b>Database:</b>	EDM 5000.16 Single User Db	<b>Local Co-ordinate Reference:</b>	Well COUNTY LINE 3130-01H
<b>Company:</b>	VERDAD RESOURCES	<b>TVD Reference:</b>	RKB = 24' @ 5069.00usft (RIG)
<b>Project:</b>	WATTENBERG FIELD	<b>MD Reference:</b>	RKB = 24' @ 5069.00usft (RIG)
<b>Site:</b>	1N-65W-31 COUNTY LINE 3130 PAD	<b>North Reference:</b>	True
<b>Well:</b>	COUNTY LINE 3130-01H	<b>Survey Calculation Method:</b>	Minimum Curvature
<b>Wellbore:</b>	Wellbore #2		
<b>Design:</b>	Design #1		

Planned Survey									
Measured Depth (usft)	Inclination (°)	Azimuth (°)	Vertical Depth (usft)	+N/-S (usft)	+E/-W (usft)	Vertical Section (usft)	Dogleg Rate (°/100usft)	Build Rate (°/100usft)	Turn Rate (°/100usft)
9,700.00	90.00	0.09	7,090.00	2,333.38	-381.77	2,332.77	0.00	0.00	0.00
9,800.00	90.00	0.09	7,090.00	2,433.38	-381.61	2,432.77	0.00	0.00	0.00
9,900.00	90.00	0.09	7,090.00	2,533.38	-381.45	2,532.77	0.00	0.00	0.00
10,000.00	90.00	0.09	7,090.00	2,633.38	-381.29	2,632.77	0.00	0.00	0.00
10,100.00	90.00	0.09	7,090.00	2,733.38	-381.13	2,732.77	0.00	0.00	0.00
10,200.00	90.00	0.09	7,090.00	2,833.38	-380.96	2,832.77	0.00	0.00	0.00
10,300.00	90.00	0.09	7,090.00	2,933.38	-380.80	2,932.77	0.00	0.00	0.00
10,400.00	90.00	0.09	7,090.00	3,033.38	-380.64	3,032.77	0.00	0.00	0.00
10,500.00	90.00	0.09	7,090.00	3,133.38	-380.48	3,132.77	0.00	0.00	0.00
10,600.00	90.00	0.09	7,090.00	3,233.38	-380.32	3,232.77	0.00	0.00	0.00
10,700.00	90.00	0.09	7,090.00	3,333.38	-380.16	3,332.77	0.00	0.00	0.00
10,800.00	90.00	0.09	7,090.00	3,433.38	-380.00	3,432.77	0.00	0.00	0.00
10,900.00	90.00	0.09	7,090.00	3,533.38	-379.84	3,532.77	0.00	0.00	0.00
11,000.00	90.00	0.09	7,090.00	3,633.38	-379.67	3,632.77	0.00	0.00	0.00
11,100.00	90.00	0.09	7,090.00	3,733.38	-379.51	3,732.77	0.00	0.00	0.00
11,200.00	90.00	0.09	7,090.00	3,833.38	-379.35	3,832.77	0.00	0.00	0.00
11,300.00	90.00	0.09	7,090.00	3,933.38	-379.19	3,932.77	0.00	0.00	0.00
11,400.00	90.00	0.09	7,090.00	4,033.38	-379.03	4,032.77	0.00	0.00	0.00
11,500.00	90.00	0.09	7,090.00	4,133.37	-378.87	4,132.77	0.00	0.00	0.00
11,600.00	90.00	0.09	7,090.00	4,233.37	-378.71	4,232.77	0.00	0.00	0.00
11,700.00	90.00	0.09	7,090.00	4,333.37	-378.54	4,332.77	0.00	0.00	0.00
11,800.00	90.00	0.09	7,090.00	4,433.37	-378.38	4,432.77	0.00	0.00	0.00
11,900.00	90.00	0.09	7,090.00	4,533.37	-378.22	4,532.77	0.00	0.00	0.00
12,000.00	90.00	0.09	7,090.00	4,633.37	-378.06	4,632.77	0.00	0.00	0.00
12,100.00	90.00	0.09	7,090.00	4,733.37	-377.90	4,732.77	0.00	0.00	0.00
12,200.00	90.00	0.09	7,090.00	4,833.37	-377.74	4,832.77	0.00	0.00	0.00
12,300.00	90.00	0.09	7,090.00	4,933.37	-377.58	4,932.77	0.00	0.00	0.00
12,400.00	90.00	0.09	7,090.00	5,033.37	-377.42	5,032.77	0.00	0.00	0.00
12,500.00	90.00	0.09	7,090.00	5,133.37	-377.25	5,132.77	0.00	0.00	0.00
12,600.00	90.00	0.09	7,090.00	5,233.37	-377.09	5,232.77	0.00	0.00	0.00
12,700.00	90.00	0.09	7,090.00	5,333.37	-376.93	5,332.77	0.00	0.00	0.00
12,800.00	90.00	0.09	7,090.00	5,433.37	-376.77	5,432.77	0.00	0.00	0.00
12,900.00	90.00	0.09	7,090.00	5,533.37	-376.61	5,532.77	0.00	0.00	0.00
13,000.00	90.00	0.09	7,090.00	5,633.37	-376.45	5,632.77	0.00	0.00	0.00
13,100.00	90.00	0.09	7,090.00	5,733.37	-376.29	5,732.77	0.00	0.00	0.00
13,200.00	90.00	0.09	7,090.00	5,833.37	-376.13	5,832.77	0.00	0.00	0.00
13,300.00	90.00	0.09	7,090.00	5,933.37	-375.96	5,932.77	0.00	0.00	0.00
13,400.00	90.00	0.09	7,090.00	6,033.37	-375.80	6,032.77	0.00	0.00	0.00
13,500.00	90.00	0.09	7,090.00	6,133.37	-375.64	6,132.77	0.00	0.00	0.00
13,600.00	90.00	0.09	7,090.00	6,233.37	-375.48	6,232.77	0.00	0.00	0.00
13,700.00	90.00	0.09	7,090.00	6,333.37	-375.32	6,332.77	0.00	0.00	0.00
13,800.00	90.00	0.09	7,090.00	6,433.37	-375.16	6,432.77	0.00	0.00	0.00
13,900.00	90.00	0.09	7,090.00	6,533.37	-375.00	6,532.77	0.00	0.00	0.00
14,000.00	90.00	0.09	7,090.00	6,633.37	-374.83	6,632.77	0.00	0.00	0.00
14,100.00	90.00	0.09	7,090.00	6,733.37	-374.67	6,732.77	0.00	0.00	0.00
14,200.00	90.00	0.09	7,090.00	6,833.37	-374.51	6,832.77	0.00	0.00	0.00
14,300.00	90.00	0.09	7,090.00	6,933.37	-374.35	6,932.77	0.00	0.00	0.00
14,400.00	90.00	0.09	7,090.00	7,033.37	-374.19	7,032.77	0.00	0.00	0.00
14,500.00	90.00	0.09	7,090.00	7,133.37	-374.03	7,132.77	0.00	0.00	0.00
14,600.00	90.00	0.09	7,090.00	7,233.37	-373.87	7,232.77	0.00	0.00	0.00
14,700.00	90.00	0.09	7,090.00	7,333.37	-373.71	7,332.77	0.00	0.00	0.00
14,800.00	90.00	0.09	7,090.00	7,433.37	-373.54	7,432.77	0.00	0.00	0.00
14,900.00	90.00	0.09	7,090.00	7,533.37	-373.38	7,532.77	0.00	0.00	0.00
15,000.00	90.00	0.09	7,090.00	7,633.37	-373.22	7,632.77	0.00	0.00	0.00

# VERDAD RESOURCES

## Planning Report

<b>Database:</b>	EDM 5000.16 Single User Db	<b>Local Co-ordinate Reference:</b>	Well COUNTY LINE 3130-01H
<b>Company:</b>	VERDAD RESOURCES	<b>TVD Reference:</b>	RKB = 24' @ 5069.00usft (RIG)
<b>Project:</b>	WATTENBERG FIELD	<b>MD Reference:</b>	RKB = 24' @ 5069.00usft (RIG)
<b>Site:</b>	1N-65W-31 COUNTY LINE 3130 PAD	<b>North Reference:</b>	True
<b>Well:</b>	COUNTY LINE 3130-01H	<b>Survey Calculation Method:</b>	Minimum Curvature
<b>Wellbore:</b>	Wellbore #2		
<b>Design:</b>	Design #1		

Planned Survey										
Measured Depth (usft)	Inclination (°)	Azimuth (°)	Vertical Depth (usft)	+N/-S (usft)	+E/-W (usft)	Vertical Section (usft)	Dogleg Rate (°/100usft)	Build Rate (°/100usft)	Turn Rate (°/100usft)	
15,100.00	90.00	0.09	7,090.00	7,733.37	-373.06	7,732.77	0.00	0.00	0.00	
15,200.00	90.00	0.09	7,090.00	7,833.37	-372.90	7,832.77	0.00	0.00	0.00	
15,300.00	90.00	0.09	7,090.00	7,933.37	-372.74	7,932.77	0.00	0.00	0.00	
15,400.00	90.00	0.09	7,090.00	8,033.37	-372.58	8,032.77	0.00	0.00	0.00	
15,500.00	90.00	0.09	7,090.00	8,133.37	-372.42	8,132.77	0.00	0.00	0.00	
15,600.00	90.00	0.09	7,090.00	8,233.37	-372.25	8,232.77	0.00	0.00	0.00	
15,700.00	90.00	0.09	7,090.00	8,333.37	-372.09	8,332.77	0.00	0.00	0.00	
15,800.00	90.00	0.09	7,090.00	8,433.37	-371.93	8,432.77	0.00	0.00	0.00	
15,900.00	90.00	0.09	7,090.00	8,533.37	-371.77	8,532.77	0.00	0.00	0.00	
16,000.00	90.00	0.09	7,090.00	8,633.37	-371.61	8,632.77	0.00	0.00	0.00	
16,100.00	90.00	0.09	7,090.00	8,733.37	-371.45	8,732.77	0.00	0.00	0.00	
16,200.00	90.00	0.09	7,090.00	8,833.37	-371.29	8,832.77	0.00	0.00	0.00	
16,300.00	90.00	0.09	7,090.00	8,933.37	-371.12	8,932.77	0.00	0.00	0.00	
16,400.00	90.00	0.09	7,090.00	9,033.37	-370.96	9,032.77	0.00	0.00	0.00	
16,500.00	90.00	0.09	7,090.00	9,133.37	-370.80	9,132.77	0.00	0.00	0.00	
16,600.00	90.00	0.09	7,090.00	9,233.37	-370.64	9,232.77	0.00	0.00	0.00	
16,700.00	90.00	0.09	7,090.00	9,333.37	-370.48	9,332.77	0.00	0.00	0.00	
16,800.00	90.00	0.09	7,090.00	9,433.37	-370.32	9,432.77	0.00	0.00	0.00	
16,900.00	90.00	0.09	7,090.00	9,533.37	-370.16	9,532.77	0.00	0.00	0.00	
17,000.00	90.00	0.09	7,090.00	9,633.37	-370.00	9,632.77	0.00	0.00	0.00	
17,100.00	90.00	0.09	7,090.00	9,733.37	-369.83	9,732.77	0.00	0.00	0.00	
17,130.43	90.00	0.09	7,090.00	9,763.80	-369.79	9,763.20	0.00	0.00	0.00	
BPZ @ 17130.43ft										
17,200.00	90.00	0.09	7,090.00	9,833.37	-369.67	9,832.77	0.00	0.00	0.00	
17,250.43	90.00	0.09	7,090.00	9,883.80	-369.59	9,883.20	0.00	0.00	0.00	
TD Well @ 17250.43ft										

Casing Points					
Measured Depth (usft)	Vertical Depth (usft)	Name	Casing Diameter (")	Hole Diameter (")	
2,306.97	2,297.00	9 5/8"	9-5/8	13-1/2	

Plan Annotations					
Measured Depth (usft)	Vertical Depth (usft)	Local Coordinates			
		+N/-S (usft)	+E/-W (usft)	Comment	
204.50	204.50	0.00	0.00	Begin Nudge @ 204.50ft	
497.50	496.99	-12.42	-8.36	Hold Tangent @ 497.50ft	
6,432.07	6,400.55	-514.91	-346.92	KOP @ 6432.07ft :: DLS = 9°/100'	
7,486.10	7,090.00	119.48	-385.34	TPZ @ 7486.10ft	
17,130.43	7,090.00	9,763.80	-369.79	BPZ @ 17130.43ft	
17,250.43	7,090.00	9,883.80	-369.59	TD Well @ 17250.43ft	