

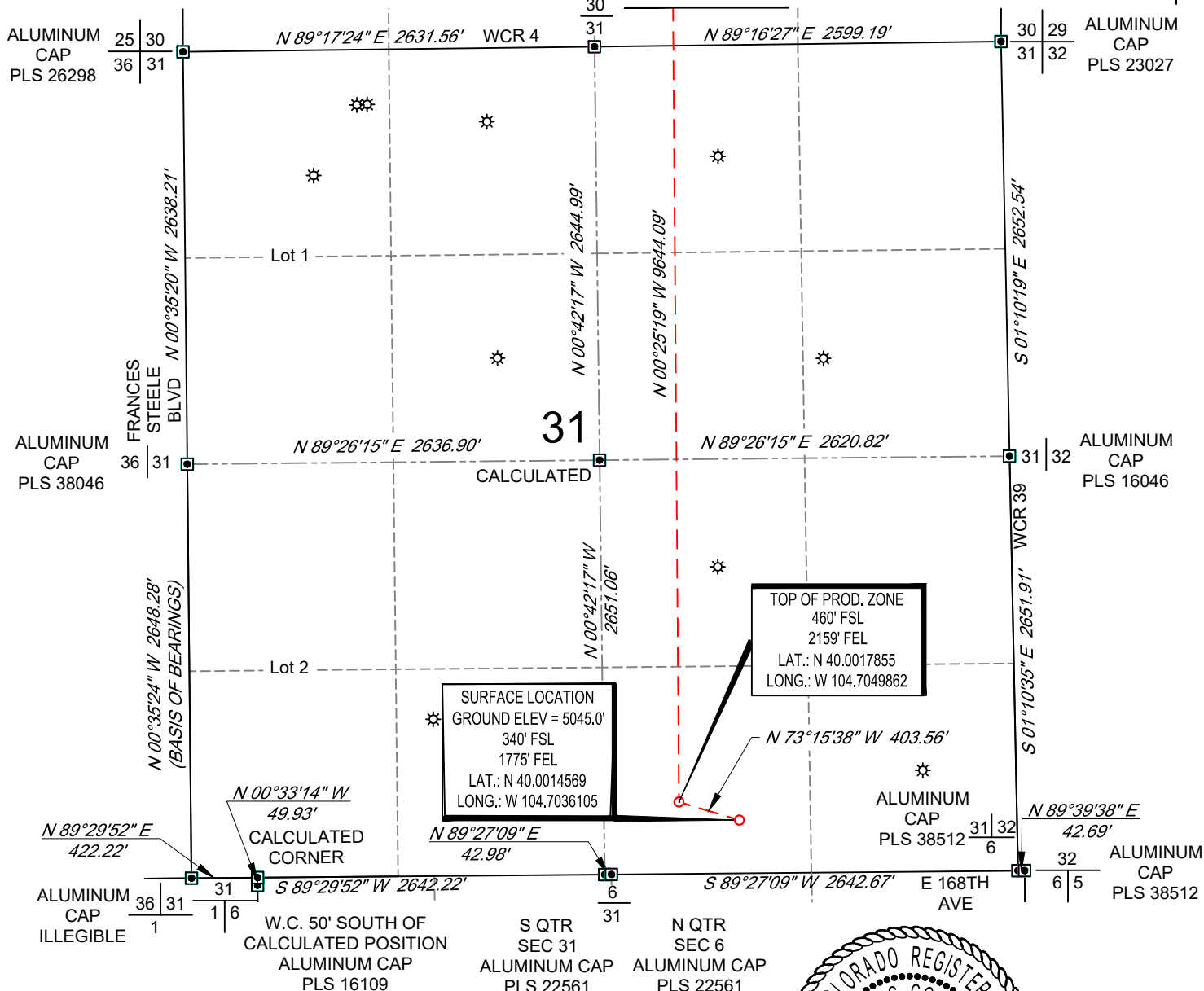
SCALE: 1" = 1000'
0' 500' 1000'

WELL LOCATION MAP

SHL SW/4 SE/4, SECTION 31, TOWNSHIP 1-N, RANGE 65-W
TPZ SW/4 SE/4, SECTION 31, TOWNSHIP 1-N, RANGE 65-W
BPZ/BHL NW/4 NE/4, SECTION 30, TOWNSHIP 1-N, RANGE 65-W
WELD COUNTY, COLORADO



ALUMINUM
CAP
PLS 26959 MATCH LINE
SEE SHEET 2



NOTES

1. Horizontal (NAD 83) and vertical (NAVD 88) datum is based on the Trimble VRS Network. The lineal units of measurement are U.S. Survey Foot.
2. All directions, distances, and dimensions shown hereon are based on coordinates from the "Colorado coordinate system of 1983 north zone" (Title 38, Article 52 C.R.S.).
3. All section line dimensions shown hereon are based on field measurements of existing monuments and/or physical evidence found in the field unless otherwise indicated.
4. Physical features shown hereon are for graphical representation only.
5. See Form 2A for visible improvements within 500' of wellhead.
6. Distances to nearest section lines are measured perpendicularly.
7. This is not a land survey nor land survey plat.

PDOP Reading: 1.5 Instrument Operator: **Eric Purcell**
Date Surveyed: **07/10/2018**



SURVEYOR'S STATEMENT

The undersigned hereby states that the well location shown hereon was staked on the ground based on existing monumentation and/or physical evidence found in the field and is correct to the best of my knowledge, information and belief.



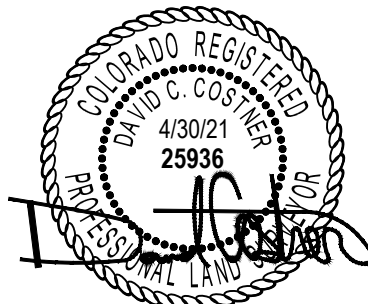
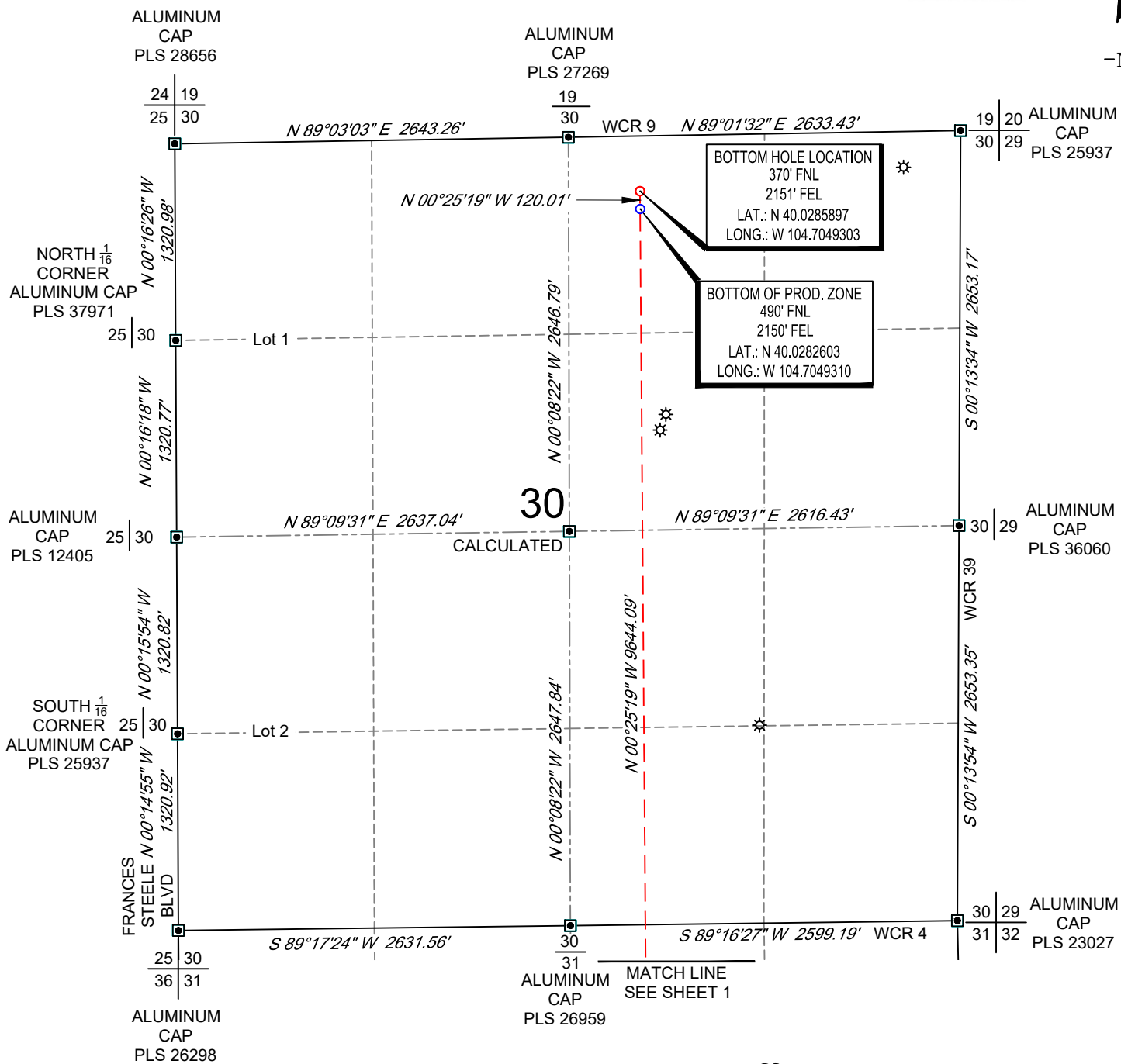
VERDAD RESOURCES
COUNTYLINE 3130-01H
JOB NO. 118679

JLS	07/12/2018	REVISION:	
SHEET :	1 OF 2	REV3	04/30/2021
FILE:LO_COUNTYLINE_3130_01H_REV3			

SCALE: 1" = 1000'
0' 500' 1000'

WELL LOCATION MAP

SHL SW/4 SE/4, SECTION 31, TOWNSHIP 1-N, RANGE 65-W
TPZ SW/4 SE/4, SECTION 31, TOWNSHIP 1-N, RANGE 65-W
BPZ/BHL NW/4 NE/4, SECTION 30, TOWNSHIP 1-N, RANGE 65-W
WELD COUNTY, COLORADO



VERDAD RESOURCES
COUNTYLINE 3130-01H
JOB NO. 118679

JLS	07/12/2018	REVISION:	
SHEET :	2 OF 2	REV3	04/30/2021
FILE:LO_COUNTYLINE_3130_01H_REV3			

TOPOGRAPHIC
LOYALTY INNOVATION LEGACY
520 Stacy Court Ste B, Lafayette, CO 80026
303.666.0379 www.topographic.com