



# **GMT Exploration Company, LLC**

**Elbert County, CO (NAD 83)**

**Irwin-Taylor Pad**

**TAYLOR 6-65 23-26 1HN**

**Wellbore #1**

**Plan: Design #1**

## **Standard Planning Report**

**26 May, 2019**



Project: Elbert County, CO (NAD 83)  
 Site: Irwin-Taylor Pad  
 Well: TAYLOR 6-65 23-26 1HN  
 Wellbore: Wellbore #1  
 Design: Design #1

# GMT Exploration Company, LLC

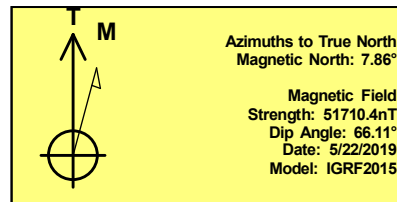
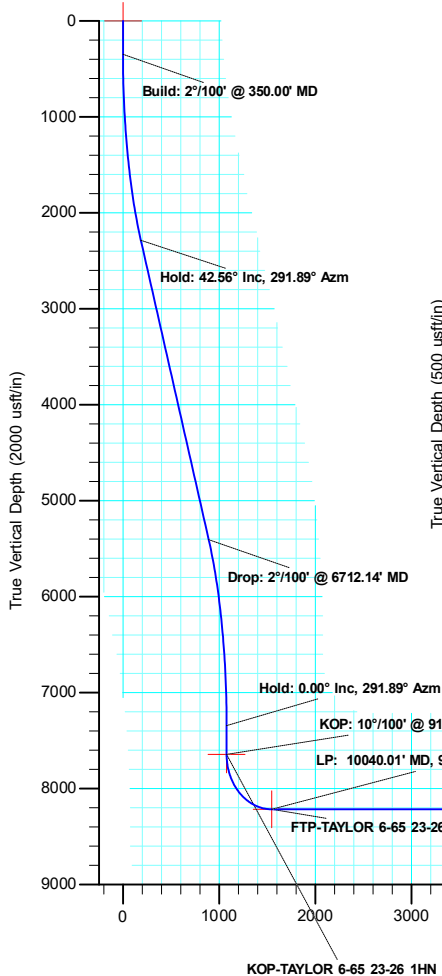
Geodetic System: US State Plane 1983  
 Datum: North American Datum 1983  
 Ellipsoid: GRS 1980  
 Zone: Colorado Central Zone  
 System Datum: Mean Sea Level

## WELL DETAILS: TAYLOR 6-65 23-26 1HN

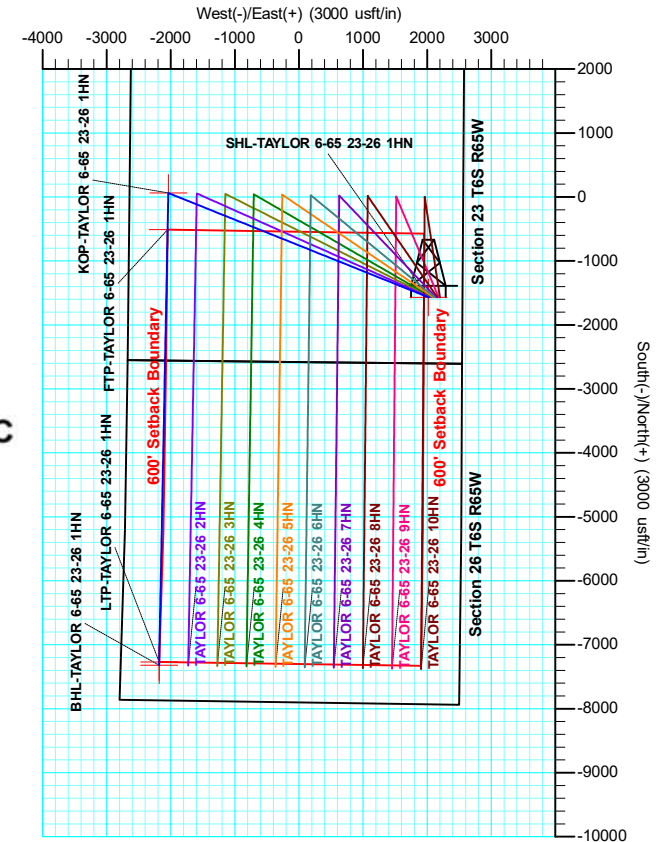
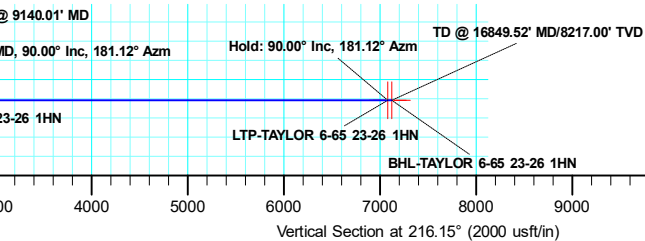
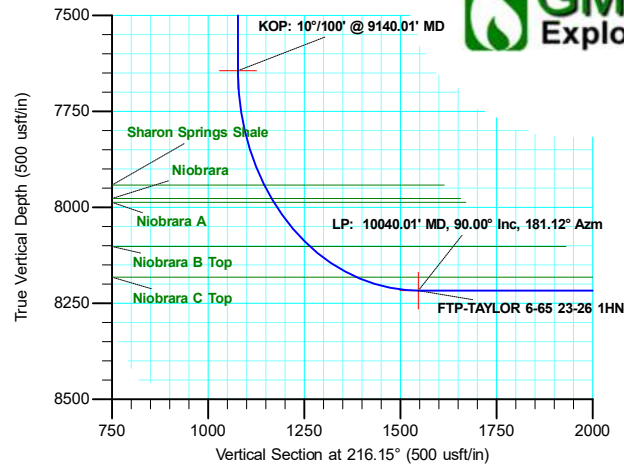
+N/-S	+E/-W	Northing	Ground Level: Easting	6227.00 Latitude	Longitude
-1567.44	2019.90	1611684.07	3246526.90	39.509594	-104.626230

## SECTION DETAILS

MD	Inc	Azi	TVD	+N/-S	+E/-W	Dleg	TFace	Vsect	Target
0.00	0.00	0.00	0.00	-1567.44	2019.90	0.00	0.00	0.00	
350.00	0.00	0.00	350.00	-1567.44	2019.90	0.00	0.00	0.00	
2477.87	42.56	291.88	2287.54	-1286.17	1319.70	2.00	291.88	185.96	
6712.14	42.56	291.88	5406.50	-218.74	-1337.69	0.00	0.00	891.73	
8840.01	0.00	0.00	7344.04	62.53	-2037.89	2.00	180.00	1077.69	
9140.01	0.00	0.00	7644.04	62.53	-2037.89	0.00	0.00	1077.69	
10040.01	90.00	181.12	8217.00	-510.32	-2049.07	10.00	0.00	1546.83	FTP-TAYLOR 6-65 23-26 1HN
16799.52	90.00	181.12	8217.00	-7268.54	-2180.89	0.00	0.00	7081.55	LTP-TAYLOR 6-65 23-26 1HN
16849.52	90.00	181.12	8217.00	-7318.53	-2181.87	0.00	0.00	7122.49	BHL-TAYLOR 6-65 23-26 1HN



SHL: 1034 FSL/ 531 FEL Sec. 23  
 FTP: 2046 FSL/ 600 FWL Sec. 23  
 LTP: 600 FSL/ 600 FWL Sec. 26  
 BHL: 550 FSL/ 600 FWL Sec. 26





<b>Database:</b>	Local	<b>Local Co-ordinate Reference:</b>	Well TAYLOR6-65 23-26 1HN
<b>Company:</b>	GMT Exploration Company, LLC	<b>TVD Reference:</b>	KB @ 6247.00usft
<b>Project:</b>	Elbert County, CO (NAD 83)	<b>MD Reference:</b>	KB @ 6247.00usft
<b>Site:</b>	Irwin-Taylor Pad	<b>North Reference:</b>	True
<b>Well:</b>	TAYLOR 6-65 23-26 1HN	<b>Survey Calculation Method:</b>	Minimum Curvature
<b>Wellbore:</b>	Wellbore #1		
<b>Design:</b>	Design #1		

<b>Project</b>	Elbert County, CO (NAD 83)		
<b>Map System:</b>	US State Plane 1983	<b>System Datum:</b>	Mean Sea Level
<b>Geo Datum:</b>	North American Datum 1983		
<b>Map Zone:</b>	Colorado Central Zone		

<b>Site</b>	Irwin-Taylor Pad				
<b>Site Position:</b>		<b>Northing:</b>	1,613,232.16 usft	<b>Latitude:</b>	39.513898
<b>From:</b>	Lat/Long	<b>Easting:</b>	3,244,492.14 usft	<b>Longitude:</b>	-104.633389
<b>Position Uncertainty:</b>	0.00 usft	<b>Slot Radius:</b>	13-3/16 "	<b>Grid Convergence:</b>	0.55 °

<b>Well</b>	TAYLOR 6-65 23-26 1HN					
<b>Well Position</b>	<b>+N/-S</b>	-1,567.44 usft	<b>Northing:</b>	1,611,684.07 usft	<b>Latitude:</b>	39.509595
	<b>+E/-W</b>	2,019.90 usft	<b>Easting:</b>	3,246,526.90 usft	<b>Longitude:</b>	-104.626230
<b>Position Uncertainty</b>		0.00 usft	<b>Wellhead Elevation:</b>		<b>Ground Level:</b>	6,227.00 usft

<b>Wellbore</b>	Wellbore #1				
<b>Magnetics</b>	<b>Model Name</b>	<b>Sample Date</b>	<b>Declination (°)</b>	<b>Dip Angle (°)</b>	<b>Field Strength (nT)</b>
	IGRF2015	5/22/2019	7.86	66.11	51,710.39891524

<b>Design</b>	Design #1			
<b>Audit Notes:</b>				
<b>Version:</b>	<b>Phase:</b>	PLAN	<b>Tie On Depth:</b>	0.00
<b>Vertical Section:</b>	<b>Depth From (TVD) (usft)</b>	<b>+N/-S (usft)</b>	<b>+E/-W (usft)</b>	<b>Direction (°)</b>
	0.00	0.00	0.00	216.16

<b>Plan Survey Tool Program</b>	<b>Date</b>	5/25/2019			
<b>Depth From (usft)</b>	<b>Depth To (usft)</b>	<b>Survey (Wellbore)</b>	<b>Tool Name</b>	<b>Remarks</b>	
1	0.00	16,849.52	Design #1 (Wellbore #1)	MWD	
				OWSG MWD - Standard	

<b>Plan Sections</b>										
<b>Measured Depth (usft)</b>	<b>Inclination (°)</b>	<b>Azimuth (°)</b>	<b>Vertical Depth (usft)</b>	<b>+N/-S (usft)</b>	<b>+E/-W (usft)</b>	<b>Dogleg Rate (°/100usft)</b>	<b>Build Rate (°/100usft)</b>	<b>Turn Rate (°/100usft)</b>	<b>TFO (°)</b>	<b>Target</b>
0.00	0.00	0.00	0.00	0.00	0.00	0.00	0.00	0.00	0.00	
350.00	0.00	0.00	350.00	0.00	0.00	0.00	0.00	0.00	0.00	
2,477.87	42.56	291.89	2,287.54	281.32	-700.18	2.00	2.00	0.00	291.89	
6,712.14	42.56	291.89	5,406.50	1,348.97	-3,357.49	0.00	0.00	0.00	0.00	
8,840.01	0.00	0.00	7,344.04	1,630.29	-4,057.67	2.00	-2.00	0.00	180.00	
9,140.01	0.00	0.00	7,644.04	1,630.29	-4,057.67	0.00	0.00	0.00	0.00	
10,040.01	90.00	181.12	8,217.00	1,057.44	-4,068.89	10.00	10.00	0.00	0.00	FTP-TAYLOR 6-65
16,799.52	90.00	181.12	8,217.00	-5,700.77	-4,201.25	0.00	0.00	0.00	0.00	LTP-TAYLOR 6-65 :
16,849.52	90.00	181.12	8,217.00	-5,750.76	-4,202.22	0.00	0.00	0.00	0.00	BHL-TAYLOR 6-65



<b>Database:</b>	Local	<b>Local Co-ordinate Reference:</b>	Well TAYLOR6-65 23-26 1HN
<b>Company:</b>	GMT Exploration Company, LLC	<b>TVD Reference:</b>	KB @ 6247.00usft
<b>Project:</b>	Elbert County, CO (NAD 83)	<b>MD Reference:</b>	KB @ 6247.00usft
<b>Site:</b>	Irwin-Taylor Pad	<b>North Reference:</b>	True
<b>Well:</b>	TAYLOR 6-65 23-26 1HN	<b>Survey Calculation Method:</b>	Minimum Curvature
<b>Wellbore:</b>	Wellbore #1		
<b>Design:</b>	Design #1		

Planned Survey										
Measured Depth (usft)	Inclination (°)	Azimuth (°)	Vertical Depth (usft)	+N/-S (usft)	+E/-W (usft)	Vertical Section (usft)	Dogleg Rate (°/100usft)	Build Rate (°/100usft)	Turn Rate (°/100usft)	
0.00	0.00	0.00	0.00	0.00	0.00	0.00	0.00	0.00	0.00	0.00
<b>SHL-TAYLOR 6-65 23-26 1HN</b>										
100.00	0.00	0.00	100.00	0.00	0.00	0.00	0.00	0.00	0.00	0.00
200.00	0.00	0.00	200.00	0.00	0.00	0.00	0.00	0.00	0.00	0.00
300.00	0.00	0.00	300.00	0.00	0.00	0.00	0.00	0.00	0.00	0.00
350.00	0.00	0.00	350.00	0.00	0.00	0.00	0.00	0.00	0.00	0.00
<b>Build: 2°/100' @ 350.00' MD</b>										
400.00	1.00	291.89	400.00	0.16	-0.40	0.11	2.00	2.00	2.00	0.00
500.00	3.00	291.89	499.93	1.46	-3.64	0.97	2.00	2.00	2.00	0.00
600.00	5.00	291.89	599.68	4.06	-10.12	2.69	2.00	2.00	2.00	0.00
700.00	7.00	291.89	699.13	7.96	-19.81	5.26	2.00	2.00	2.00	0.00
800.00	9.00	291.89	798.15	13.15	-32.73	8.69	2.00	2.00	2.00	0.00
900.00	11.00	291.89	896.63	19.62	-48.84	12.97	2.00	2.00	2.00	0.00
1,000.00	13.00	291.89	994.44	27.37	-68.13	18.10	2.00	2.00	2.00	0.00
1,100.00	15.00	291.89	1,091.46	36.39	-90.58	24.06	2.00	2.00	2.00	0.00
1,200.00	17.00	291.89	1,187.58	46.67	-116.15	30.85	2.00	2.00	2.00	0.00
1,300.00	19.00	291.89	1,282.68	58.19	-144.83	38.46	2.00	2.00	2.00	0.00
1,400.00	21.00	291.89	1,376.65	70.94	-176.56	46.89	2.00	2.00	2.00	0.00
1,500.00	23.00	291.89	1,469.36	84.90	-211.32	56.12	2.00	2.00	2.00	0.00
1,600.00	25.00	291.89	1,560.71	100.07	-249.06	66.15	2.00	2.00	2.00	0.00
1,700.00	27.00	291.89	1,650.59	116.41	-289.73	76.95	2.00	2.00	2.00	0.00
1,800.00	29.00	291.89	1,738.88	133.91	-333.29	88.52	2.00	2.00	2.00	0.00
1,900.00	31.00	291.89	1,825.48	152.55	-379.69	100.84	2.00	2.00	2.00	0.00
2,000.00	33.00	291.89	1,910.28	172.30	-428.85	113.90	2.00	2.00	2.00	0.00
2,100.00	35.00	291.89	1,993.18	193.15	-480.74	127.68	2.00	2.00	2.00	0.00
2,200.00	37.00	291.89	2,074.07	215.06	-535.28	142.17	2.00	2.00	2.00	0.00
2,300.00	39.00	291.89	2,152.87	238.02	-592.40	157.34	2.00	2.00	2.00	0.00
2,400.00	41.00	291.89	2,229.47	261.98	-652.04	173.18	2.00	2.00	2.00	0.00
2,477.87	42.56	291.89	2,287.54	281.32	-700.18	185.96	2.00	2.00	2.00	0.00
<b>Hold: 42.56° Inc, 291.89° Azm</b>										
2,500.00	42.56	291.89	2,303.84	286.90	-714.07	189.65	0.00	0.00	0.00	0.00
2,600.00	42.56	291.89	2,377.50	312.11	-776.83	206.32	0.00	0.00	0.00	0.00
2,700.00	42.56	291.89	2,451.16	337.33	-839.59	222.99	0.00	0.00	0.00	0.00
2,800.00	42.56	291.89	2,524.82	362.54	-902.34	239.66	0.00	0.00	0.00	0.00
2,900.00	42.56	291.89	2,598.48	387.76	-965.10	256.32	0.00	0.00	0.00	0.00
3,000.00	42.56	291.89	2,672.14	412.97	-1,027.86	272.99	0.00	0.00	0.00	0.00
3,100.00	42.56	291.89	2,745.80	438.19	-1,090.61	289.66	0.00	0.00	0.00	0.00
3,200.00	42.56	291.89	2,819.46	463.40	-1,153.37	306.33	0.00	0.00	0.00	0.00
3,300.00	42.56	291.89	2,893.12	488.61	-1,216.13	323.00	0.00	0.00	0.00	0.00
3,400.00	42.56	291.89	2,966.78	513.83	-1,278.88	339.66	0.00	0.00	0.00	0.00
3,500.00	42.56	291.89	3,040.44	539.04	-1,341.64	356.33	0.00	0.00	0.00	0.00
3,600.00	42.56	291.89	3,114.10	564.26	-1,404.40	373.00	0.00	0.00	0.00	0.00
3,700.00	42.56	291.89	3,187.76	589.47	-1,467.16	389.67	0.00	0.00	0.00	0.00
3,800.00	42.56	291.89	3,261.42	614.69	-1,529.91	406.33	0.00	0.00	0.00	0.00
3,900.00	42.56	291.89	3,335.08	639.90	-1,592.67	423.00	0.00	0.00	0.00	0.00
4,000.00	42.56	291.89	3,408.74	665.12	-1,655.43	439.67	0.00	0.00	0.00	0.00
4,100.00	42.56	291.89	3,482.40	690.33	-1,718.18	456.34	0.00	0.00	0.00	0.00
4,200.00	42.56	291.89	3,556.06	715.54	-1,780.94	473.01	0.00	0.00	0.00	0.00
4,300.00	42.56	291.89	3,629.72	740.76	-1,843.70	489.67	0.00	0.00	0.00	0.00
4,400.00	42.56	291.89	3,703.38	765.97	-1,906.45	506.34	0.00	0.00	0.00	0.00
4,500.00	42.56	291.89	3,777.04	791.19	-1,969.21	523.01	0.00	0.00	0.00	0.00
4,600.00	42.56	291.89	3,850.70	816.40	-2,031.97	539.68	0.00	0.00	0.00	0.00
4,700.00	42.56	291.89	3,924.36	841.62	-2,094.73	556.35	0.00	0.00	0.00	0.00



<b>Database:</b>	Local	<b>Local Co-ordinate Reference:</b>	Well TAYLOR6-65 23-26 1HN
<b>Company:</b>	GMT Exploration Company, LLC	<b>TVD Reference:</b>	KB @ 6247.00usft
<b>Project:</b>	Elbert County, CO (NAD 83)	<b>MD Reference:</b>	KB @ 6247.00usft
<b>Site:</b>	Irwin-Taylor Pad	<b>North Reference:</b>	True
<b>Well:</b>	TAYLOR 6-65 23-26 1HN	<b>Survey Calculation Method:</b>	Minimum Curvature
<b>Wellbore:</b>	Wellbore #1		
<b>Design:</b>	Design #1		

Planned Survey									
Measured Depth (usft)	Inclination (°)	Azimuth (°)	Vertical Depth (usft)	+N/-S (usft)	+E/-W (usft)	Vertical Section (usft)	Dogleg Rate (°/100usft)	Build Rate (°/100usft)	Turn Rate (°/100usft)
4,800.00	42.56	291.89	3,998.02	866.83	-2,157.48	573.01	0.00	0.00	0.00
4,900.00	42.56	291.89	4,071.68	892.05	-2,220.24	589.68	0.00	0.00	0.00
5,000.00	42.56	291.89	4,145.34	917.26	-2,283.00	606.35	0.00	0.00	0.00
5,100.00	42.56	291.89	4,219.00	942.47	-2,345.75	623.02	0.00	0.00	0.00
5,200.00	42.56	291.89	4,292.66	967.69	-2,408.51	639.68	0.00	0.00	0.00
5,300.00	42.56	291.89	4,366.32	992.90	-2,471.27	656.35	0.00	0.00	0.00
5,400.00	42.56	291.89	4,439.98	1,018.12	-2,534.02	673.02	0.00	0.00	0.00
5,500.00	42.56	291.89	4,513.64	1,043.33	-2,596.78	689.69	0.00	0.00	0.00
5,600.00	42.56	291.89	4,587.30	1,068.55	-2,659.54	706.36	0.00	0.00	0.00
5,700.00	42.56	291.89	4,660.96	1,093.76	-2,722.30	723.02	0.00	0.00	0.00
5,800.00	42.56	291.89	4,734.62	1,118.98	-2,785.05	739.69	0.00	0.00	0.00
5,900.00	42.56	291.89	4,808.28	1,144.19	-2,847.81	756.36	0.00	0.00	0.00
6,000.00	42.56	291.89	4,881.94	1,169.40	-2,910.57	773.03	0.00	0.00	0.00
6,100.00	42.56	291.89	4,955.60	1,194.62	-2,973.32	789.70	0.00	0.00	0.00
6,200.00	42.56	291.89	5,029.26	1,219.83	-3,036.08	806.36	0.00	0.00	0.00
6,300.00	42.56	291.89	5,102.92	1,245.05	-3,098.84	823.03	0.00	0.00	0.00
6,400.00	42.56	291.89	5,176.58	1,270.26	-3,161.59	839.70	0.00	0.00	0.00
6,500.00	42.56	291.89	5,250.24	1,295.48	-3,224.35	856.37	0.00	0.00	0.00
6,600.00	42.56	291.89	5,323.90	1,320.69	-3,287.11	873.03	0.00	0.00	0.00
6,700.00	42.56	291.89	5,397.56	1,345.91	-3,349.86	889.70	0.00	0.00	0.00
6,712.14	42.56	291.89	5,406.50	1,348.97	-3,357.49	891.73	0.00	0.00	0.00
<b>Drop: 2°/100' @ 6712.14' MD</b>									
6,800.00	40.80	291.89	5,472.12	1,370.75	-3,411.69	906.12	2.00	-2.00	0.00
6,900.00	38.80	291.89	5,548.94	1,394.61	-3,471.09	921.90	2.00	-2.00	0.00
7,000.00	36.80	291.89	5,627.96	1,417.46	-3,527.96	937.00	2.00	-2.00	0.00
7,100.00	34.80	291.89	5,709.06	1,439.27	-3,582.23	951.42	2.00	-2.00	0.00
7,200.00	32.80	291.89	5,792.15	1,460.00	-3,633.85	965.13	2.00	-2.00	0.00
7,300.00	30.80	291.89	5,877.14	1,479.65	-3,682.74	978.11	2.00	-2.00	0.00
7,400.00	28.80	291.89	5,963.91	1,498.18	-3,728.86	990.36	2.00	-2.00	0.00
7,500.00	26.80	291.89	6,052.36	1,515.56	-3,772.13	1,001.85	2.00	-2.00	0.00
7,600.00	24.80	291.89	6,142.39	1,531.79	-3,812.51	1,012.58	2.00	-2.00	0.00
7,700.00	22.80	291.89	6,233.88	1,546.83	-3,849.96	1,022.52	2.00	-2.00	0.00
7,800.00	20.80	291.89	6,326.72	1,560.68	-3,884.42	1,031.68	2.00	-2.00	0.00
7,900.00	18.80	291.89	6,420.81	1,573.31	-3,915.85	1,040.02	2.00	-2.00	0.00
8,000.00	16.80	291.89	6,516.01	1,584.70	-3,944.21	1,047.56	2.00	-2.00	0.00
8,100.00	14.80	291.89	6,612.23	1,594.85	-3,969.47	1,054.27	2.00	-2.00	0.00
8,200.00	12.80	291.89	6,709.34	1,603.74	-3,991.61	1,060.15	2.00	-2.00	0.00
8,300.00	10.80	291.89	6,807.22	1,611.37	-4,010.58	1,065.18	2.00	-2.00	0.00
8,400.00	8.80	291.89	6,905.76	1,617.71	-4,026.38	1,069.38	2.00	-2.00	0.00
8,500.00	6.80	291.89	7,004.83	1,622.77	-4,038.97	1,072.72	2.00	-2.00	0.00
8,600.00	4.80	291.89	7,104.31	1,626.54	-4,048.35	1,075.21	2.00	-2.00	0.00
8,700.00	2.80	291.89	7,204.08	1,629.01	-4,054.50	1,076.85	2.00	-2.00	0.00
8,800.00	0.80	291.89	7,304.03	1,630.18	-4,057.41	1,077.62	2.00	-2.00	0.00
8,840.01	0.00	0.00	7,344.04	1,630.29	-4,057.67	1,077.69	2.00	-2.00	170.22
<b>Hold: 0.00° Inc, 291.89° Azm</b>									
8,900.00	0.00	0.00	7,404.03	1,630.29	-4,057.67	1,077.69	0.00	0.00	0.00
9,000.00	0.00	0.00	7,504.03	1,630.29	-4,057.67	1,077.69	0.00	0.00	0.00
9,100.00	0.00	0.00	7,604.03	1,630.29	-4,057.67	1,077.69	0.00	0.00	0.00
9,140.01	0.00	0.00	7,644.04	1,630.29	-4,057.67	1,077.69	0.00	0.00	0.00
<b>KOP: 10°/100' @ 9140.01' MD - KOP-TAYLOR 6-65 23-26 1HN</b>									
9,150.00	1.00	181.12	7,654.03	1,630.20	-4,057.67	1,077.76	10.00	10.00	0.00
9,200.00	6.00	181.12	7,703.92	1,627.15	-4,057.73	1,080.26	10.00	10.00	0.00
9,250.00	11.00	181.12	7,753.35	1,619.77	-4,057.88	1,086.31	10.00	10.00	0.00



<b>Database:</b>	Local	<b>Local Co-ordinate Reference:</b>	Well TAYLOR6-65 23-26 1HN
<b>Company:</b>	GMT Exploration Company, LLC	<b>TVD Reference:</b>	KB @ 6247.00usft
<b>Project:</b>	Elbert County, CO (NAD 83)	<b>MD Reference:</b>	KB @ 6247.00usft
<b>Site:</b>	Irwin-Taylor Pad	<b>North Reference:</b>	True
<b>Well:</b>	TAYLOR 6-65 23-26 1HN	<b>Survey Calculation Method:</b>	Minimum Curvature
<b>Wellbore:</b>	Wellbore #1		
<b>Design:</b>	Design #1		

Planned Survey										
Measured Depth (usft)	Inclination (°)	Azimuth (°)	Vertical Depth (usft)	+N/-S (usft)	+E/-W (usft)	Vertical Section (usft)	Dogleg Rate (°/100usft)	Build Rate (°/100usft)	Turn Rate (°/100usft)	
9,300.00	16.00	181.12	7,801.96	1,608.10	-4,058.10	1,095.86	10.00	10.00	0.00	
9,350.00	21.00	181.12	7,849.36	1,592.24	-4,058.41	1,108.85	10.00	10.00	0.00	
9,400.00	26.00	181.12	7,895.20	1,572.32	-4,058.81	1,125.17	10.00	10.00	0.00	
9,450.00	31.00	181.12	7,939.13	1,548.47	-4,059.27	1,144.69	10.00	10.00	0.00	
9,500.00	36.00	181.12	7,980.81	1,520.89	-4,059.81	1,167.28	10.00	10.00	0.00	
9,550.00	41.00	181.12	8,019.93	1,489.78	-4,060.42	1,192.76	10.00	10.00	0.00	
9,600.00	46.00	181.12	8,056.18	1,455.38	-4,061.10	1,220.93	10.00	10.00	0.00	
9,650.00	51.00	181.12	8,089.31	1,417.95	-4,061.83	1,251.58	10.00	10.00	0.00	
9,700.00	56.00	181.12	8,119.04	1,377.78	-4,062.61	1,284.48	10.00	10.00	0.00	
9,750.00	61.00	181.12	8,145.16	1,335.17	-4,063.45	1,319.38	10.00	10.00	0.00	
9,800.00	66.00	181.12	8,167.46	1,290.45	-4,064.33	1,356.01	10.00	10.00	0.00	
9,850.00	71.00	181.12	8,185.78	1,243.95	-4,065.24	1,394.08	10.00	10.00	0.00	
9,900.00	76.00	181.12	8,199.98	1,196.04	-4,066.17	1,433.33	10.00	10.00	0.00	
9,950.00	81.00	181.12	8,209.94	1,147.07	-4,067.13	1,473.43	10.00	10.00	0.00	
10,000.00	86.00	181.12	8,215.60	1,097.41	-4,068.11	1,514.10	10.00	10.00	0.00	
10,040.01	90.00	181.12	8,217.00	1,057.44	-4,068.89	1,546.83	10.00	10.00	0.00	
<b>LP: 10040.01' MD, 90.00° Inc, 181.12° Azm - FTP-TAYLOR 6-65 23-26 1HN</b>										
10,100.00	90.00	181.12	8,217.00	997.46	-4,070.06	1,595.95	0.00	0.00	0.00	
10,200.00	90.00	181.12	8,217.00	897.48	-4,072.02	1,677.83	0.00	0.00	0.00	
10,300.00	90.00	181.12	8,217.00	797.50	-4,073.98	1,759.71	0.00	0.00	0.00	
10,400.00	90.00	181.12	8,217.00	697.52	-4,075.94	1,841.59	0.00	0.00	0.00	
10,500.00	90.00	181.12	8,217.00	597.54	-4,077.90	1,923.47	0.00	0.00	0.00	
10,600.00	90.00	181.12	8,217.00	497.56	-4,079.85	2,005.35	0.00	0.00	0.00	
10,700.00	90.00	181.12	8,217.00	397.58	-4,081.81	2,087.23	0.00	0.00	0.00	
10,800.00	90.00	181.12	8,217.00	297.60	-4,083.77	2,169.11	0.00	0.00	0.00	
10,900.00	90.00	181.12	8,217.00	197.62	-4,085.73	2,250.99	0.00	0.00	0.00	
11,000.00	90.00	181.12	8,217.00	97.64	-4,087.69	2,332.87	0.00	0.00	0.00	
11,100.00	90.00	181.12	8,217.00	-2.34	-4,089.64	2,414.76	0.00	0.00	0.00	
11,200.00	90.00	181.12	8,217.00	-102.33	-4,091.60	2,496.64	0.00	0.00	0.00	
11,300.00	90.00	181.12	8,217.00	-202.31	-4,093.56	2,578.52	0.00	0.00	0.00	
11,400.00	90.00	181.12	8,217.00	-302.29	-4,095.52	2,660.40	0.00	0.00	0.00	
11,500.00	90.00	181.12	8,217.00	-402.27	-4,097.48	2,742.28	0.00	0.00	0.00	
11,600.00	90.00	181.12	8,217.00	-502.25	-4,099.43	2,824.16	0.00	0.00	0.00	
11,700.00	90.00	181.12	8,217.00	-602.23	-4,101.39	2,906.04	0.00	0.00	0.00	
11,800.00	90.00	181.12	8,217.00	-702.21	-4,103.35	2,987.92	0.00	0.00	0.00	
11,900.00	90.00	181.12	8,217.00	-802.19	-4,105.31	3,069.80	0.00	0.00	0.00	
12,000.00	90.00	181.12	8,217.00	-902.17	-4,107.27	3,151.68	0.00	0.00	0.00	
12,100.00	90.00	181.12	8,217.00	-1,002.15	-4,109.22	3,233.56	0.00	0.00	0.00	
12,200.00	90.00	181.12	8,217.00	-1,102.13	-4,111.18	3,315.44	0.00	0.00	0.00	
12,300.00	90.00	181.12	8,217.00	-1,202.11	-4,113.14	3,397.32	0.00	0.00	0.00	
12,400.00	90.00	181.12	8,217.00	-1,302.10	-4,115.10	3,479.20	0.00	0.00	0.00	
12,500.00	90.00	181.12	8,217.00	-1,402.08	-4,117.06	3,561.08	0.00	0.00	0.00	
12,600.00	90.00	181.12	8,217.00	-1,502.06	-4,119.02	3,642.96	0.00	0.00	0.00	
12,700.00	90.00	181.12	8,217.00	-1,602.04	-4,120.97	3,724.84	0.00	0.00	0.00	
12,800.00	90.00	181.12	8,217.00	-1,702.02	-4,122.93	3,806.73	0.00	0.00	0.00	
12,900.00	90.00	181.12	8,217.00	-1,802.00	-4,124.89	3,888.61	0.00	0.00	0.00	
13,000.00	90.00	181.12	8,217.00	-1,901.98	-4,126.85	3,970.49	0.00	0.00	0.00	
13,100.00	90.00	181.12	8,217.00	-2,001.96	-4,128.81	4,052.37	0.00	0.00	0.00	
13,200.00	90.00	181.12	8,217.00	-2,101.94	-4,130.76	4,134.25	0.00	0.00	0.00	
13,300.00	90.00	181.12	8,217.00	-2,201.92	-4,132.72	4,216.13	0.00	0.00	0.00	
13,400.00	90.00	181.12	8,217.00	-2,301.90	-4,134.68	4,298.01	0.00	0.00	0.00	
13,500.00	90.00	181.12	8,217.00	-2,401.88	-4,136.64	4,379.89	0.00	0.00	0.00	
13,600.00	90.00	181.12	8,217.00	-2,501.87	-4,138.60	4,461.77	0.00	0.00	0.00	
13,700.00	90.00	181.12	8,217.00	-2,601.85	-4,140.55	4,543.65	0.00	0.00	0.00	



<b>Database:</b>	Local	<b>Local Co-ordinate Reference:</b>	Well TAYLOR6-65 23-26 1HN
<b>Company:</b>	GMT Exploration Company, LLC	<b>TVD Reference:</b>	KB @ 6247.00usft
<b>Project:</b>	Elbert County, CO (NAD 83)	<b>MD Reference:</b>	KB @ 6247.00usft
<b>Site:</b>	Irwin-Taylor Pad	<b>North Reference:</b>	True
<b>Well:</b>	TAYLOR 6-65 23-26 1HN	<b>Survey Calculation Method:</b>	Minimum Curvature
<b>Wellbore:</b>	Wellbore #1		
<b>Design:</b>	Design #1		

Planned Survey										
Measured Depth (usft)	Inclination (°)	Azimuth (°)	Vertical Depth (usft)	+N/-S (usft)	+E/-W (usft)	Vertical Section (usft)	Dogleg Rate (°/100usft)	Build Rate (°/100usft)	Turn Rate (°/100usft)	
13,800.00	90.00	181.12	8,217.00	-2,701.83	-4,142.51	4,625.53	0.00	0.00	0.00	
13,900.00	90.00	181.12	8,217.00	-2,801.81	-4,144.47	4,707.41	0.00	0.00	0.00	
14,000.00	90.00	181.12	8,217.00	-2,901.79	-4,146.43	4,789.29	0.00	0.00	0.00	
14,100.00	90.00	181.12	8,217.00	-3,001.77	-4,148.39	4,871.17	0.00	0.00	0.00	
14,200.00	90.00	181.12	8,217.00	-3,101.75	-4,150.34	4,953.05	0.00	0.00	0.00	
14,300.00	90.00	181.12	8,217.00	-3,201.73	-4,152.30	5,034.93	0.00	0.00	0.00	
14,400.00	90.00	181.12	8,217.00	-3,301.71	-4,154.26	5,116.81	0.00	0.00	0.00	
14,500.00	90.00	181.12	8,217.00	-3,401.69	-4,156.22	5,198.70	0.00	0.00	0.00	
14,600.00	90.00	181.12	8,217.00	-3,501.67	-4,158.18	5,280.58	0.00	0.00	0.00	
14,700.00	90.00	181.12	8,217.00	-3,601.65	-4,160.13	5,362.46	0.00	0.00	0.00	
14,800.00	90.00	181.12	8,217.00	-3,701.63	-4,162.09	5,444.34	0.00	0.00	0.00	
14,900.00	90.00	181.12	8,217.00	-3,801.62	-4,164.05	5,526.22	0.00	0.00	0.00	
15,000.00	90.00	181.12	8,217.00	-3,901.60	-4,166.01	5,608.10	0.00	0.00	0.00	
15,100.00	90.00	181.12	8,217.00	-4,001.58	-4,167.97	5,689.98	0.00	0.00	0.00	
15,200.00	90.00	181.12	8,217.00	-4,101.56	-4,169.93	5,771.86	0.00	0.00	0.00	
15,300.00	90.00	181.12	8,217.00	-4,201.54	-4,171.88	5,853.74	0.00	0.00	0.00	
15,400.00	90.00	181.12	8,217.00	-4,301.52	-4,173.84	5,935.62	0.00	0.00	0.00	
15,500.00	90.00	181.12	8,217.00	-4,401.50	-4,175.80	6,017.50	0.00	0.00	0.00	
15,600.00	90.00	181.12	8,217.00	-4,501.48	-4,177.76	6,099.38	0.00	0.00	0.00	
15,700.00	90.00	181.12	8,217.00	-4,601.46	-4,179.72	6,181.26	0.00	0.00	0.00	
15,800.00	90.00	181.12	8,217.00	-4,701.44	-4,181.67	6,263.14	0.00	0.00	0.00	
15,900.00	90.00	181.12	8,217.00	-4,801.42	-4,183.63	6,345.02	0.00	0.00	0.00	
16,000.00	90.00	181.12	8,217.00	-4,901.40	-4,185.59	6,426.90	0.00	0.00	0.00	
16,100.00	90.00	181.12	8,217.00	-5,001.39	-4,187.55	6,508.78	0.00	0.00	0.00	
16,200.00	90.00	181.12	8,217.00	-5,101.37	-4,189.51	6,590.67	0.00	0.00	0.00	
16,300.00	90.00	181.12	8,217.00	-5,201.35	-4,191.46	6,672.55	0.00	0.00	0.00	
16,400.00	90.00	181.12	8,217.00	-5,301.33	-4,193.42	6,754.43	0.00	0.00	0.00	
16,500.00	90.00	181.12	8,217.00	-5,401.31	-4,195.38	6,836.31	0.00	0.00	0.00	
16,600.00	90.00	181.12	8,217.00	-5,501.29	-4,197.34	6,918.19	0.00	0.00	0.00	
16,700.00	90.00	181.12	8,217.00	-5,601.27	-4,199.30	7,000.07	0.00	0.00	0.00	
16,799.52	90.00	181.12	8,217.00	-5,700.77	-4,201.25	7,081.55	0.00	0.00	0.00	
<b>Hold: 90.00° Inc, 181.12° Azm - LTP-TAYLOR 6-65 23-26 1HN</b>										
16,849.52	90.00	181.12	8,217.00	-5,750.76	-4,202.22	7,122.49	0.00	0.00	0.00	
<b>TD @ 16849.52' MD/8217.00' TVD - BHL-TAYLOR 6-65 23-26 1HN</b>										

<b>Database:</b>	Local	<b>Local Co-ordinate Reference:</b>	Well TAYLOR6-65 23-26 1HN
<b>Company:</b>	GMT Exploration Company, LLC	<b>TVD Reference:</b>	KB @ 6247.00usft
<b>Project:</b>	Elbert County, CO (NAD 83)	<b>MD Reference:</b>	KB @ 6247.00usft
<b>Site:</b>	Irwin-Taylor Pad	<b>North Reference:</b>	True
<b>Well:</b>	TAYLOR 6-65 23-26 1HN	<b>Survey Calculation Method:</b>	Minimum Curvature
<b>Wellbore:</b>	Wellbore #1		
<b>Design:</b>	Design #1		

**Design Targets**

**Target Name**

- hit/miss target - Shape	Dip Angle (°)	Dip Dir. (°)	TVD (usft)	+N/-S (usft)	+E/-W (usft)	Northing (usft)	Easting (usft)	Latitude	Longitude
SHL-TAYLOR 6-65 23 - plan hits target center - Point	0.00	0.00	0.00	0.00	0.00	1,611,684.07	3,246,526.90	39.509595	-104.626230
KOP-TAYLOR 6-65 23 - plan hits target center - Point	0.00	0.00	7,644.04	1,630.29	-4,057.67	1,613,275.25	3,242,453.74	39.514070	-104.640613
BHL-TAYLOR 6-65 23 - plan hits target center - Point	0.00	0.00	8,217.00	-5,750.76	-4,202.22	1,605,893.15	3,242,380.18	39.493805	-104.641121
LTP-TAYLOR 6-65 23 - plan hits target center - Point	0.00	0.00	8,217.00	-5,700.77	-4,201.25	1,605,943.15	3,242,380.68	39.493943	-104.641117
FTP-TAYLOR 6-65 23 - plan hits target center - Point	0.00	0.00	8,217.00	1,057.44	-4,068.89	1,612,702.32	3,242,448.03	39.512497	-104.640652

**Formations**

Measured Depth (usft)	Vertical Depth (usft)	Name	Lithology	Dip (°)	Dip Direction (°)
511.08	511.00	Denver			
2,450.11	2,267.00	Upper Arapahoe			
2,558.59	2,347.00	Laramie - Fox Hills			
2,680.78	2,437.00	Pierre Shale (Base of Fox Hills)			
7,023.71	5,647.00	Sussex Sandstone			
9,453.36	7,942.00	Sharon Springs Shale			
9,495.31	7,977.00	Niobrara			
9,507.69	7,987.00	Niobrara A			
9,670.63	8,102.00	Niobrara B Top			
9,838.71	8,182.00	Niobrara C Top			

**Plan Annotations**

Measured Depth (usft)	Vertical Depth (usft)	Local Coordinates		Comment
		+N/-S (usft)	+E/-W (usft)	
350.00	350.00	0.00	0.00	Build: 2°/100' @ 350.00' MD
2,477.87	2,287.54	281.32	-700.18	Hold: 42.56° Inc, 291.89° Azm
6,712.14	5,406.50	1,348.97	-3,357.49	Drop: 2°/100' @ 6712.14' MD
8,840.01	7,344.04	1,630.29	-4,057.67	Hold: 0.00° Inc, 291.89° Azm
9,140.01	7,644.04	1,630.29	-4,057.67	KOP: 10°/100' @ 9140.01' MD
10,040.01	8,217.00	1,057.44	-4,068.89	LP: 10040.01' MD, 90.00° Inc, 181.12° Azm
16,799.52	8,217.00	-5,700.77	-4,201.25	Hold: 90.00° Inc, 181.12° Azm
16,849.52	8,217.00	-5,750.76	-4,202.22	TD @ 16849.52' MD/8217.00' TVD