





COLORADO
Oil & Gas Conservation
Commission
Department of Natural Resources

Photo 2. Well.

Continental 2-28

API: 05-103-08186

Inspection: 701500658



COLORADO
Oil & Gas Conservation
Commission
Department of Natural Resources

Photo 3. Well pit.

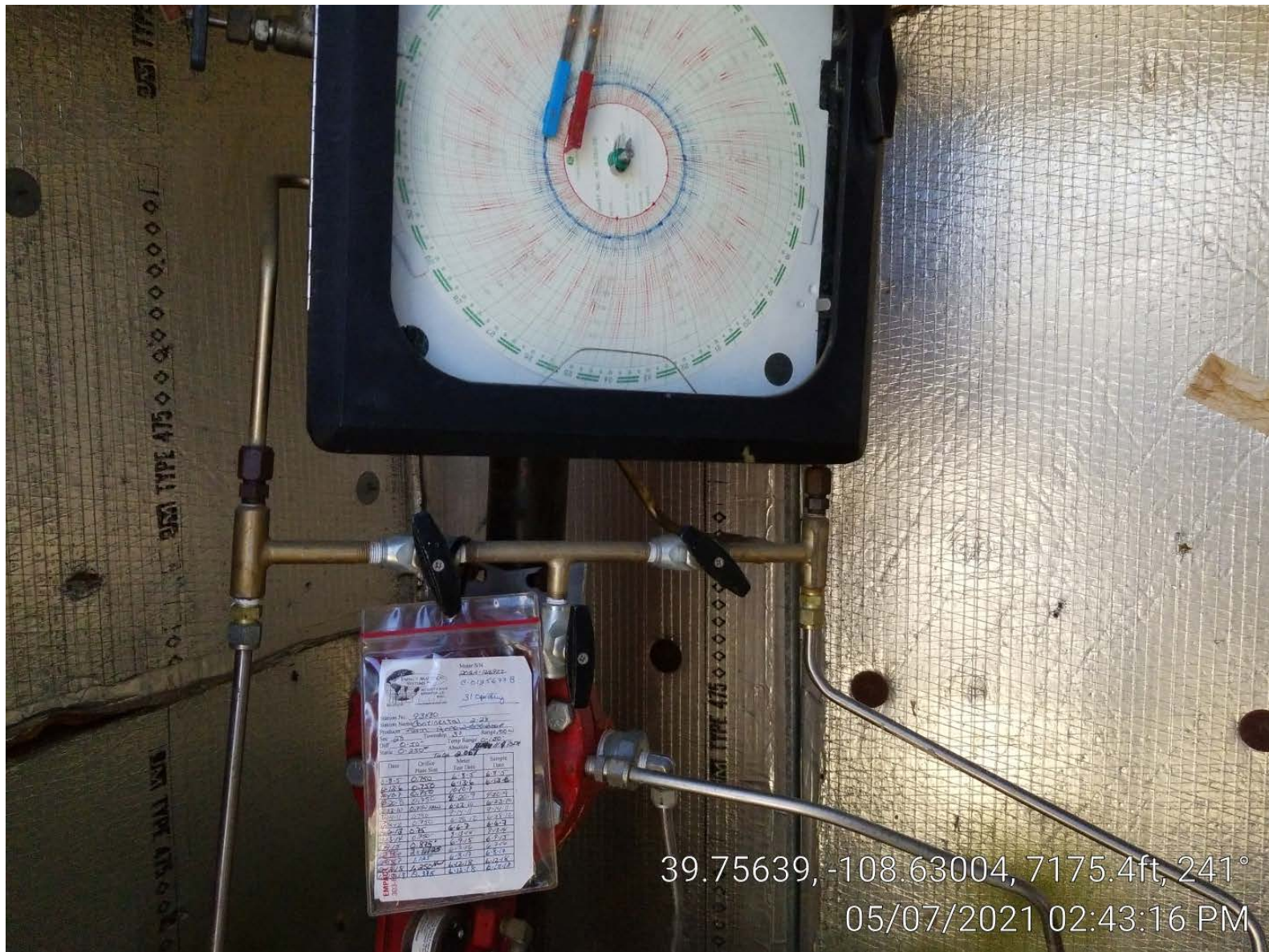
Continental 2-28

API: 05-103-08186

Inspection: 701500658









39.84667, -108.73875, 288°
05/07/2021 02:48:01 PM



COLORADO
Oil & Gas Conservation
Commission
Department of Natural Resources

Photo 7. Meter chart #2.

Continental 2-28

API: 05-103-08186

Inspection: 701500658