

T 8 N, R 9 W, 6th P.M.

PROJECT
C.I.G. EXPLORATION, INC.

Well location, C.I.G.E. 1-2-8-91,
located as shown in the NE 1/4 SW 1/4
Section 2, T8N, R9W, 6th P.M.
Moffat County, Colorado.



RECEIVED

JUN 27 1978

COLO. OIL & GAS CONS. COMM.



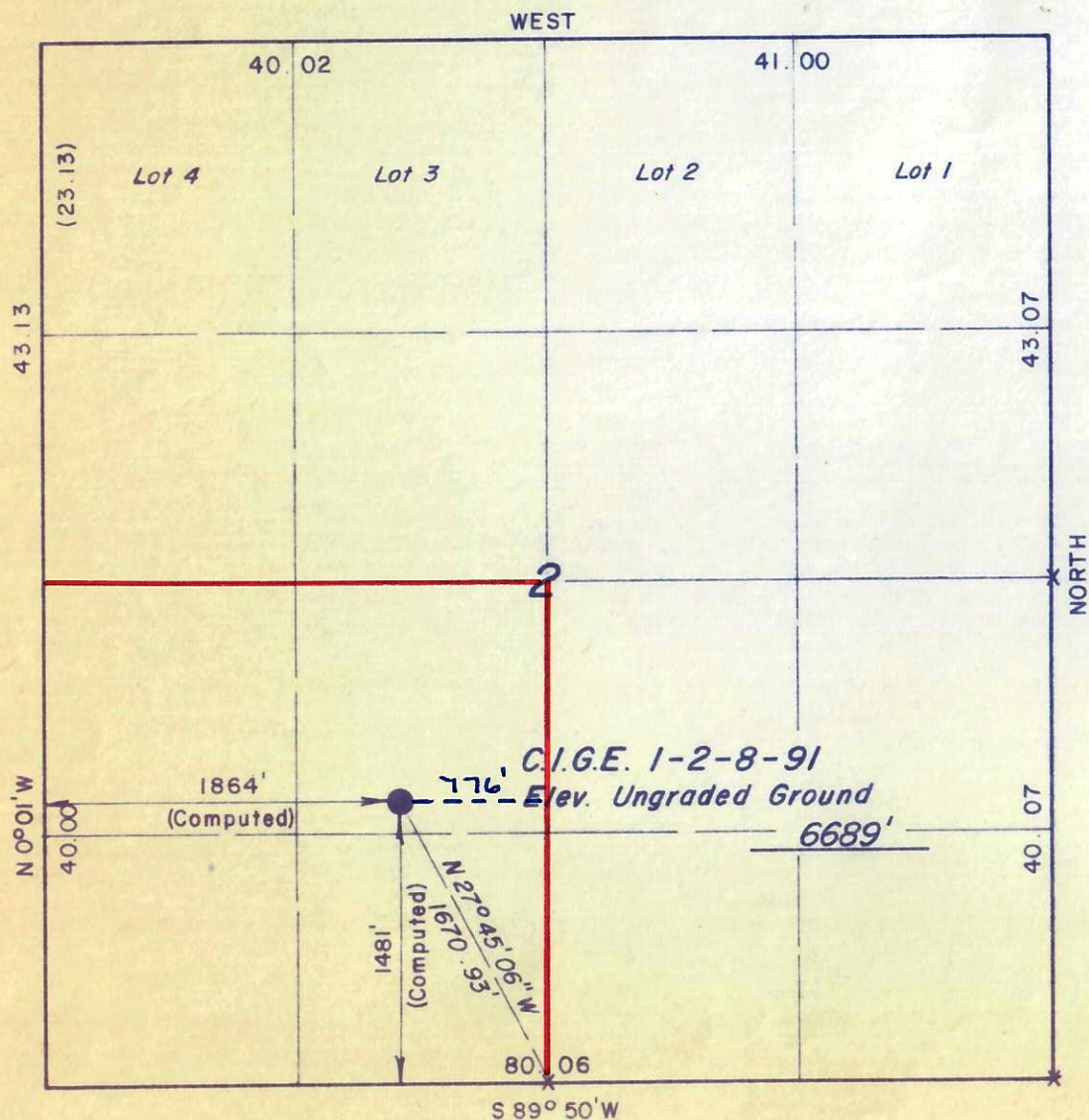
CERTIFICATE

THIS IS TO CERTIFY THAT THE ABOVE PLAT WAS COMPARED FROM
FIELD NOTES OF ACTUAL SURVEYS MADE BY ME OR UNDER MY
SUPERVISION AND THAT THE SAME ARE TRUE AND CORRECT TO THE
BEST OF MY KNOWLEDGE AND BELIEF.

James E. Kay
REGISTERED LAND SURVEYOR
REGISTRATION No 9019
STATE OF COLORADO

UINTAH ENGINEERING & LAND SURVEYING
P.O. BOX Q - 110 EAST - FIRST SOUTH
VERNAL, UTAH - 84078

| | |
|-----------------------------|-------------------------|
| SCALE 1" = 1000' | DATE 6/13/78 |
| PARTY R.K. J.K. R.S. BFW | REFERENCES GLO Plat |
| WEATHER Fair | FILE CIG EXPLORATION |



X = Section Corners Located