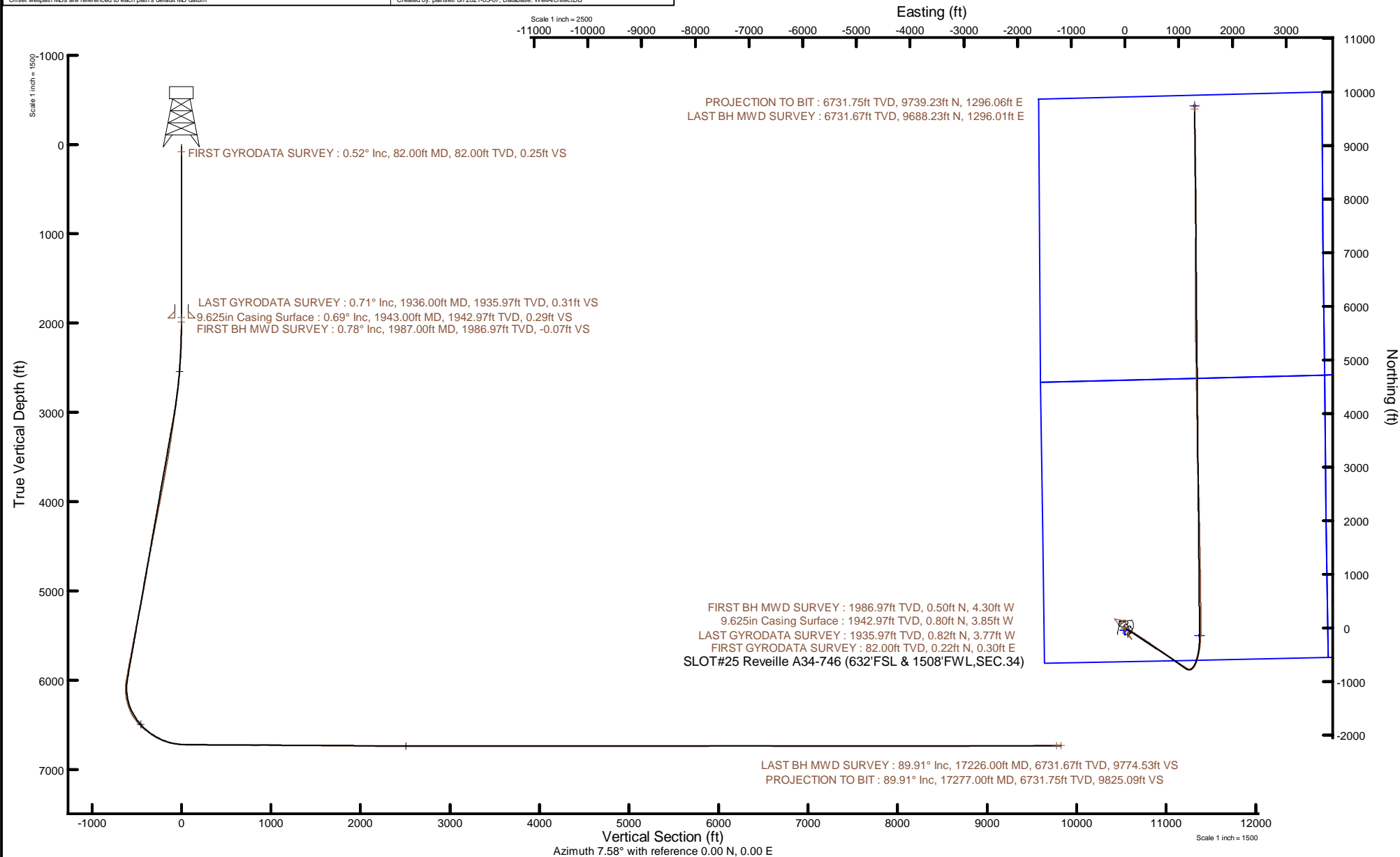


NOBLE ENERGY, INC

Location: COLORADO Slot: SLOT#25 Reveille A34-746 (632'FSL & 1508'FWL, SEC.34)
Field: WELD COUNTY (NOBLE NAD 83 GRID) Well: Reveille A34-746
Facility: SEC.34-T06N-R64W Wellbore: Reveille A34-746 PWB



Plot reference wellpath is Reveille A34-746 PWP Rev-C.0	Grid System: NAD83 / Lambert Colorado SP, Northern Zone (501), US feet
True vertical depths are referenced to H&P 517 (30) (RT)	North Reference: Grid north
Reference wellpath measured depths are referenced to H&P 517 (30) (RT)	Scale: True distance
H&P 517 (30) (RT) to Mean Sea Level: 4662 feet	Coordinates are in feet referenced to Slot
Mean Sea Level to Mud line (At Slot: SLOT#25 Reveille A34-746 (632'FSL & 1508'FWL, SEC.34)): 0 feet	Depths are in feet
Offset wellpath MDs are referenced to each path's default MD datum	Created by: painsr on 2021-03-07; Database: WellArchitectDB



REFERENCE WELLPATH IDENTIFICATION

Operator	NOBLE ENERGY, INC	Well	Reveille A34-746
Field	WELD COUNTY (NOBLE NAD 83 GRID)	API	0512350793
Facility	SEC.34-T06N-R64W	Wellbore	Reveille A34-746 AWB
Slot	SLOT#25 Reveille A34-746 (632'FSL & 1508'FWL,SEC.34)		

REPORT SETUP INFORMATION

Projection System	NAD83 / Lambert Colorado SP, Northern Zone (501), US feet	Software System	WellArchitect® 6.0
North Reference	Grid	User	Painsetr
Scale	0.999962	Report Generated	3/7/2021 at 3:26:09 PM
Convergence at slot	0.62° East	Database	WellArchitectDB

WELLPATH LOCATION

	Local coordinates		Grid coordinates		Geographic coordinates	
	North[ft]	East[ft]	Easting[US ft]	Northing[US ft]	Latitude	Longitude
Slot Location	-2623.48	883.76	3267123.17	1403575.96	40.4372500°	-104.5403400°
Facility Reference Pt			3266239.44	1406199.34	40.4444770°	-104.5434130°
Field Reference Pt			3000000.00	4454105.15	48.7761986°	-105.5000000°

WELLPATH DATUM

Calculation method	Minimum curvature	H&P 517 (30') (RT) to Facility Vertical Datum	4662.00ft
Horizontal Reference Pt	Slot	H&P 517 (30') (RT) to Mean Sea Level	4662.00ft
Vertical Reference Pt	H&P 517 (30') (RT)	H&P 517 (30') (RT) to Mud Line at Slot (SLOT#25 Reveille A34-746 (632'FSL & 1508'FWL,SEC.34))	4662.00ft
MD Reference Pt	H&P 517 (30') (RT)	Section Origin	N 0.00, E 0.00 ft
Field Vertical Reference	Mean Sea Level	Section Azimuth	7.58°

REFERENCE WELLPATH IDENTIFICATION

Operator	NOBLE ENERGY, INC	Well	Reveille A34-746
Field	WELD COUNTY (NOBLE NAD 83 GRID)	API	0512350793
Facility	SEC.34-T06N-R64W	Wellbore	Reveille A34-746 AWB
Slot	SLOT#25 Reveille A34-746 (632'FSL & 1508'FWL,SEC.34)		

WELLPATH DATA (184 stations)

MD [ft]	Inclination [°]	Azimuth [°]	TVD [ft]	Vert Sect [ft]	North [ft]	East [ft]	Latitude	Longitude	DLS [°/100ft]	Comments
0.00	0.000	54.500	0.00	0.00	0.00	0.00	40.4372500	-104.5403400	0.00	
82.00	0.520	54.500	82.00	0.25	0.22	0.30	40.4372506	-104.5403389	0.63	FIRST GYRODATA SURVEY
175.00	0.070	21.420	175.00	0.60	0.51	0.67	40.4372514	-104.5403376	0.50	
267.00	0.320	30.560	267.00	0.89	0.79	0.82	40.4372522	-104.5403370	0.27	
361.00	0.180	314.220	361.00	1.22	1.12	0.85	40.4372531	-104.5403369	0.35	
456.00	0.360	262.700	456.00	1.23	1.18	0.44	40.4372532	-104.5403384	0.30	
551.00	0.500	279.110	550.99	1.17	1.21	-0.26	40.4372533	-104.5403409	0.19	
645.00	0.480	250.780	644.99	1.00	1.15	-1.04	40.4372532	-104.5403437	0.26	
740.00	0.280	230.160	739.99	0.65	0.87	-1.59	40.4372524	-104.5403457	0.25	
835.00	0.290	37.250	834.99	0.69	0.91	-1.63	40.4372526	-104.5403458	0.60	
929.00	0.290	189.550	928.99	0.66	0.86	-1.52	40.4372524	-104.5403454	0.60	
1024.00	0.080	145.780	1023.99	0.37	0.57	-1.52	40.4372516	-104.5403455	0.25	
1119.00	0.320	228.410	1118.99	0.12	0.34	-1.68	40.4372510	-104.5403461	0.34	
1213.00	0.370	207.530	1212.98	-0.37	-0.10	-2.02	40.4372498	-104.5403473	0.14	
1308.00	0.110	172.410	1307.98	-0.74	-0.47	-2.15	40.4372488	-104.5403478	0.30	
1403.00	0.480	93.830	1402.98	-0.81	-0.58	-1.74	40.4372485	-104.5403463	0.50	
1497.00	0.320	240.600	1496.98	-0.94	-0.74	-1.58	40.4372480	-104.5403457	0.82	
1592.00	0.410	313.850	1591.98	-0.90	-0.63	-2.05	40.4372483	-104.5403474	0.46	
1687.00	0.520	331.850	1686.98	-0.35	-0.02	-2.50	40.4372500	-104.5403490	0.19	
1782.00	0.310	343.840	1781.97	0.24	0.61	-2.78	40.4372518	-104.5403500	0.24	
1876.00	0.410	271.320	1875.97	0.43	0.86	-3.18	40.4372525	-104.5403514	0.46	
1936.00	0.710	262.250	1935.97	0.31	0.82	-3.77	40.4372524	-104.5403535	0.52	LAST GYRODATA SURVEY
1987.00	0.780	218.580	1986.97	-0.07	0.50	-4.30	40.4372515	-104.5403554	1.09	FIRST BH MWD SURVEY
2082.00	3.080	123.240	2081.92	-1.73	-1.40	-2.57	40.4372462	-104.5403493	3.42	
2176.00	4.890	122.810	2175.69	-4.53	-4.96	2.91	40.4372363	-104.5403297	1.93	
2271.00	6.140	120.310	2270.24	-8.22	-9.72	10.70	40.4372230	-104.5403019	1.34	
2366.00	7.580	117.910	2364.56	-12.36	-15.21	20.63	40.4372076	-104.5402665	1.55	
2460.00	9.700	117.400	2457.49	-17.20	-21.76	33.14	40.4371893	-104.5402218	2.26	
2555.00	12.210	116.950	2550.75	-23.24	-30.00	49.20	40.4371662	-104.5401644	2.64	
2650.00	14.220	117.740	2643.23	-30.60	-39.98	68.49	40.4371382	-104.5400956	2.12	

REFERENCE WELLPATH IDENTIFICATION

Operator	NOBLE ENERGY, INC	Well	Reveille A34-746
Field	WELD COUNTY (NOBLE NAD 83 GRID)	API	0512350793
Facility	SEC.34-T06N-R64W	Wellbore	Reveille A34-746 AWB
Slot	SLOT#25 Reveille A34-746 (632'FSL & 1508'FWL,SEC.34)		

WELLPATH DATA (184 stations)

MD [ft]	Inclination [°]	Azimuth [°]	TVD [ft]	Vert Sect [ft]	North [ft]	East [ft]	Latitude	Longitude	DLS [°/100ft]	Comments
2744.00	17.580	117.540	2733.62	-39.42	-51.92	91.30	40.4371048	-104.5400141	3.57	
2839.00	19.120	117.330	2823.79	-49.58	-65.70	117.84	40.4370662	-104.5399193	1.62	
2934.00	19.510	122.560	2913.45	-61.53	-81.38	145.04	40.4370223	-104.5398222	1.87	
3029.00	19.210	121.870	3003.08	-74.66	-98.17	171.68	40.4369755	-104.5397271	0.40	
3124.00	18.860	123.730	3092.88	-87.85	-114.95	197.72	40.4369286	-104.5396342	0.74	
3218.00	19.140	122.570	3181.76	-101.06	-131.68	223.35	40.4368819	-104.5395429	0.50	
3313.00	18.800	124.140	3271.60	-114.48	-148.66	249.14	40.4368346	-104.5394509	0.65	
3407.00	18.780	122.810	3360.59	-127.70	-165.36	274.39	40.4367880	-104.5393608	0.46	
3502.00	21.580	123.010	3449.75	-141.72	-183.16	301.90	40.4367383	-104.5392627	2.95	
3596.00	22.260	123.230	3536.96	-156.85	-202.34	331.29	40.4366848	-104.5391578	0.73	
3691.00	22.630	122.830	3624.76	-172.44	-222.11	361.70	40.4366296	-104.5390494	0.42	
3785.00	22.750	122.720	3711.48	-187.87	-241.74	392.19	40.4365749	-104.5389406	0.14	
3880.00	22.780	124.530	3799.09	-204.01	-262.09	422.79	40.4365181	-104.5388315	0.74	
3974.00	22.690	124.610	3885.78	-220.49	-282.70	452.71	40.4364606	-104.5387248	0.10	
4068.00	22.250	125.230	3972.64	-236.99	-303.27	482.17	40.4364033	-104.5386198	0.53	
4163.00	22.460	124.610	4060.51	-253.58	-323.95	511.79	40.4363456	-104.5385142	0.33	
4257.00	22.510	124.900	4147.36	-270.00	-344.44	541.33	40.4362885	-104.5384089	0.13	
4352.00	22.450	125.520	4235.14	-286.84	-365.39	571.01	40.4362301	-104.5383031	0.26	
4447.00	22.590	125.260	4322.90	-303.81	-386.46	600.67	40.4361714	-104.5381974	0.18	
4541.00	22.750	124.710	4409.63	-320.49	-407.23	630.35	40.4361135	-104.5380916	0.28	
4638.00	22.190	124.960	4499.27	-337.46	-428.41	660.78	40.4360545	-104.5379831	0.59	
4731.00	22.030	123.670	4585.43	-353.21	-448.14	689.69	40.4359995	-104.5378800	0.55	
4825.00	22.170	123.820	4672.52	-368.80	-467.79	719.10	40.4359447	-104.5377751	0.16	
4920.00	20.500	125.060	4761.01	-384.40	-487.32	747.61	40.4358902	-104.5376735	1.82	
5014.00	21.830	124.140	4848.67	-399.81	-506.58	775.55	40.4358365	-104.5375739	1.46	
5108.00	21.540	124.590	4936.02	-415.46	-526.19	804.22	40.4357818	-104.5374717	0.36	
5203.00	20.880	124.630	5024.58	-431.08	-545.71	832.51	40.4357274	-104.5373708	0.69	
5297.00	21.780	123.850	5112.14	-446.41	-564.94	860.78	40.4356738	-104.5372700	1.00	
5392.00	21.780	127.840	5200.36	-463.10	-585.57	889.33	40.4356163	-104.5371682	1.56	
5486.00	21.690	129.700	5287.68	-481.12	-607.37	916.47	40.4355557	-104.5370716	0.74	

REFERENCE WELLPATH IDENTIFICATION

Operator	NOBLE ENERGY, INC	Well	Reveille A34-746
Field	WELD COUNTY (NOBLE NAD 83 GRID)	API	0512350793
Facility	SEC.34-T06N-R64W	Wellbore	Reveille A34-746 AWB
Slot	SLOT#25 Reveille A34-746 (632'FSL & 1508'FWL,SEC.34)		

WELLPATH DATA (184 stations)

MD [ft]	Inclination [°]	Azimuth [°]	TVD [ft]	Vert Sect [ft]	North [ft]	East [ft]	Latitude	Longitude	DLS [°/100ft]	Comments
5581.00	22.170	128.950	5375.81	-499.78	-629.85	943.92	40.4354932	-104.5369739	0.58	
5675.00	21.740	123.920	5463.00	-516.74	-650.72	972.16	40.4354350	-104.5368733	2.05	
5770.00	21.610	125.670	5551.28	-532.78	-670.74	1000.97	40.4353792	-104.5367706	0.69	
5864.00	22.040	125.230	5638.55	-549.11	-691.00	1029.44	40.4353228	-104.5366691	0.49	
5959.00	21.310	125.590	5726.83	-565.49	-711.33	1058.04	40.4352661	-104.5365672	0.78	
6054.00	20.720	127.640	5815.51	-582.01	-731.64	1085.38	40.4352096	-104.5364697	0.99	
6149.00	21.980	124.180	5903.99	-598.39	-751.89	1113.40	40.4351531	-104.5363699	1.87	
6243.00	22.270	122.310	5991.07	-613.72	-771.30	1143.01	40.4350990	-104.5362643	0.81	
6338.00	21.130	104.380	6079.44	-623.29	-785.19	1174.84	40.4350599	-104.5361505	7.05	
6433.00	19.960	80.020	6168.55	-620.41	-786.63	1207.46	40.4350550	-104.5360334	9.02	
6527.00	22.640	54.790	6256.31	-603.24	-773.39	1238.11	40.4350904	-104.5359227	10.07	
6622.00	28.470	42.020	6342.04	-572.10	-745.98	1268.26	40.4351647	-104.5358134	8.41	
6716.00	35.360	30.760	6421.86	-528.52	-705.88	1297.23	40.4352739	-104.5357078	9.66	
6811.00	44.430	22.450	6494.72	-470.95	-651.37	1324.06	40.4354227	-104.5356092	11.06	
6906.00	51.570	16.240	6558.28	-401.90	-584.79	1347.21	40.4356048	-104.5355235	8.94	
7000.00	56.890	12.520	6613.22	-326.21	-510.94	1366.06	40.4358069	-104.5354529	6.51	
7095.00	63.960	9.890	6660.08	-243.81	-429.95	1382.03	40.4360288	-104.5353923	7.82	
7189.00	73.260	6.690	6694.34	-156.40	-343.43	1394.56	40.4362659	-104.5353440	10.39	
7284.00	81.470	3.740	6715.10	-63.87	-251.20	1402.94	40.4365187	-104.5353103	9.16	
7378.00	89.540	2.410	6722.47	29.47	-157.71	1407.96	40.4367752	-104.5352886	8.70	
7473.00	89.630	0.470	6723.15	123.92	-62.74	1410.34	40.4370358	-104.5352763	2.04	
7568.00	89.510	0.070	6723.87	218.14	32.25	1410.79	40.4372965	-104.5352710	0.44	
7662.00	89.750	0.950	6724.47	311.42	126.25	1411.63	40.4375545	-104.5352643	0.97	
7757.00	89.380	0.600	6725.19	405.75	221.23	1412.91	40.4378152	-104.5352560	0.54	
7852.00	90.340	358.710	6725.43	499.84	316.23	1412.34	40.4380759	-104.5352543	2.23	
7947.00	89.380	358.650	6725.66	593.69	411.20	1410.15	40.4383366	-104.5352585	1.01	
8041.00	89.350	358.940	6726.70	686.58	505.17	1408.18	40.4385946	-104.5352619	0.31	
8136.00	89.690	358.740	6727.50	780.47	600.15	1406.25	40.4388554	-104.5352651	0.42	
8230.00	90.370	1.400	6727.45	873.66	694.14	1406.37	40.4391134	-104.5352610	2.92	
8325.00	89.630	358.880	6727.45	967.85	789.13	1406.60	40.4393741	-104.5352565	2.76	

REFERENCE WELLPATH IDENTIFICATION

Operator	NOBLE ENERGY, INC	Well	Reveille A34-746
Field	WELD COUNTY (NOBLE NAD 83 GRID)	API	0512350793
Facility	SEC.34-T06N-R64W	Wellbore	Reveille A34-746 AWB
Slot	SLOT#25 Reveille A34-746 (632'FSL & 1508'FWL,SEC.34)		

WELLPATH DATA (184 stations)

MD [ft]	Inclination [°]	Azimuth [°]	TVD [ft]	Vert Sect [ft]	North [ft]	East [ft]	Latitude	Longitude	DLS [°/100ft]	Comments
8420.00	89.140	359.110	6728.47	1061.78	884.11	1404.93	40.4396348	-104.5352587	0.57	
8514.00	89.780	358.640	6729.35	1154.69	978.09	1403.09	40.4398928	-104.5352617	0.84	
8609.00	89.570	358.910	6729.89	1248.57	1073.07	1401.06	40.4401536	-104.5352653	0.36	
8704.00	89.630	358.420	6730.55	1342.42	1168.04	1398.84	40.4404143	-104.5352695	0.52	
8799.00	89.320	359.560	6731.43	1436.35	1263.02	1397.17	40.4406750	-104.5352718	1.24	
8893.00	89.660	358.380	6732.26	1529.28	1357.00	1395.48	40.4409330	-104.5352742	1.31	
8988.00	89.510	358.970	6732.95	1623.13	1451.97	1393.28	40.4411938	-104.5352784	0.64	
9083.00	89.290	358.770	6733.95	1717.03	1546.94	1391.41	40.4414545	-104.5352814	0.31	
9178.00	89.260	359.210	6735.15	1810.96	1641.92	1389.74	40.4417152	-104.5352837	0.46	
9272.00	89.630	358.710	6736.06	1903.89	1735.90	1388.03	40.4419732	-104.5352862	0.66	
9367.00	89.720	359.310	6736.60	1997.82	1830.89	1386.39	40.4422340	-104.5352883	0.64	
9461.00	89.750	358.900	6737.03	2090.80	1924.87	1384.92	40.4424920	-104.5352900	0.44	
9556.00	89.200	358.600	6737.90	2184.66	2019.85	1382.85	40.4427527	-104.5352937	0.66	
9651.00	89.260	358.780	6739.18	2278.51	2114.81	1380.68	40.4430135	-104.5352978	0.20	
9745.00	89.510	358.640	6740.19	2371.38	2208.78	1378.56	40.4432714	-104.5353017	0.30	
9840.00	90.150	359.480	6740.47	2465.33	2303.77	1377.00	40.4435322	-104.5353036	1.11	
9935.00	89.230	359.250	6740.98	2559.36	2398.76	1375.95	40.4437930	-104.5353037	1.00	
10029.00	89.750	359.170	6741.82	2652.35	2492.75	1374.65	40.4440510	-104.5353046	0.56	
10124.00	90.770	356.580	6741.39	2745.98	2587.67	1371.13	40.4443116	-104.5353136	2.93	
10219.00	89.910	358.090	6740.82	2839.46	2682.56	1366.71	40.4445722	-104.5353257	1.83	
10313.00	90.890	356.970	6740.17	2932.01	2776.47	1362.66	40.4448301	-104.5353366	1.58	
10408.00	89.970	357.940	6739.46	3025.52	2871.37	1358.45	40.4450907	-104.5353481	1.41	
10502.00	90.220	358.740	6739.30	3118.30	2965.33	1355.72	40.4453486	-104.5353542	0.89	
10597.00	90.680	358.840	6738.55	3212.18	3060.31	1353.72	40.4456094	-104.5353577	0.50	
10691.00	89.820	358.250	6738.14	3305.01	3154.27	1351.33	40.4458674	-104.5353626	1.11	
10786.00	89.820	358.810	6738.44	3398.83	3249.24	1348.89	40.4461281	-104.5353676	0.59	
10881.00	89.480	359.150	6739.02	3492.76	3344.23	1347.20	40.4463888	-104.5353700	0.51	
10975.00	89.690	359.790	6739.70	3585.82	3438.22	1346.33	40.4466469	-104.5353694	0.72	
11070.00	89.420	359.650	6740.44	3679.92	3533.21	1345.87	40.4469076	-104.5353674	0.32	
11164.00	90.400	359.640	6740.59	3773.02	3627.21	1345.29	40.4471656	-104.5353658	1.04	

REFERENCE WELLPATH IDENTIFICATION

Operator	NOBLE ENERGY, INC	Well	Reveille A34-746
Field	WELD COUNTY (NOBLE NAD 83 GRID)	API	0512350793
Facility	SEC.34-T06N-R64W	Wellbore	Reveille A34-746 AWB
Slot	SLOT#25 Reveille A34-746 (632'FSL & 1508'FWL,SEC.34)		

WELLPATH DATA (184 stations)

MD [ft]	Inclination [°]	Azimuth [°]	TVD [ft]	Vert Sect [ft]	North [ft]	East [ft]	Latitude	Longitude	DLS [°/100ft]	Comments
11259.00	90.150	359.580	6740.13	3867.10	3722.21	1344.64	40.4474264	-104.5353644	0.27	
11353.00	89.600	358.890	6740.34	3960.10	3816.20	1343.38	40.4476844	-104.5353653	0.94	
11448.00	90.800	359.230	6740.01	4054.05	3911.18	1341.82	40.4479451	-104.5353671	1.31	
11543.00	90.400	0.550	6739.01	4148.19	4006.18	1341.64	40.4482059	-104.5353641	1.45	
11637.00	89.820	359.310	6738.83	4241.35	4100.17	1341.53	40.4484639	-104.5353608	1.46	
11732.00	90.580	358.520	6738.50	4335.26	4195.15	1339.73	40.4487246	-104.5353636	1.15	
11826.00	89.850	359.330	6738.15	4428.19	4289.14	1337.97	40.4489826	-104.5353662	1.16	
11921.00	90.370	357.890	6737.96	4522.02	4384.10	1335.66	40.4492434	-104.5353708	1.61	
12016.00	89.450	358.840	6738.11	4615.79	4479.06	1332.95	40.4495041	-104.5353768	1.39	
12110.00	88.860	359.360	6739.50	4708.75	4573.04	1331.47	40.4497621	-104.5353785	0.84	
12299.00	89.940	359.330	6741.48	4895.79	4762.02	1329.31	40.4502808	-104.5353788	0.57	
12394.00	89.850	358.510	6741.65	4989.70	4857.00	1327.52	40.4505416	-104.5353816	0.87	
12489.00	90.340	359.300	6741.50	5083.62	4951.98	1325.71	40.4508023	-104.5353844	0.98	
12583.00	90.120	358.320	6741.12	5176.51	5045.96	1323.76	40.4510603	-104.5353877	1.07	
12678.00	90.280	358.900	6740.79	5270.35	5140.93	1321.45	40.4513210	-104.5353923	0.63	
12772.00	89.940	358.710	6740.61	5363.25	5234.91	1319.49	40.4515790	-104.5353956	0.41	
12867.00	90.430	358.670	6740.30	5457.11	5329.88	1317.32	40.4518398	-104.5353997	0.52	
12962.00	90.220	358.820	6739.76	5550.98	5424.86	1315.24	40.4521005	-104.5354035	0.27	
13056.00	90.280	359.120	6739.35	5643.92	5518.84	1313.55	40.4523585	-104.5354059	0.33	
13151.00	90.520	359.120	6738.69	5737.88	5613.83	1312.09	40.4526193	-104.5354074	0.25	
13252.00	90.340	358.590	6737.93	5837.71	5714.80	1310.07	40.4528965	-104.5354107	0.55	
13347.00	90.550	4.120	6737.19	5932.11	5809.74	1312.32	40.4531570	-104.5353990	5.83	
13442.00	90.030	0.270	6736.71	6026.67	5904.65	1315.95	40.4534174	-104.5353822	4.09	
13536.00	89.910	0.350	6736.76	6119.91	5998.65	1316.46	40.4536754	-104.5353767	0.15	
13631.00	90.000	359.850	6736.83	6214.10	6093.65	1316.63	40.4539361	-104.5353724	0.53	
13725.00	89.850	359.570	6736.96	6307.22	6187.65	1316.15	40.4541941	-104.5353704	0.34	
13820.00	89.850	359.560	6737.21	6401.29	6282.64	1315.43	40.4544549	-104.5353693	0.01	
13915.00	89.970	0.500	6737.35	6495.46	6377.64	1315.48	40.4547156	-104.5353654	1.00	
14010.00	89.850	359.010	6737.50	6589.57	6472.64	1315.08	40.4549764	-104.5353631	1.57	
14104.00	89.780	359.460	6737.81	6682.58	6566.63	1313.82	40.4552344	-104.5353640	0.48	

REFERENCE WELLPATH IDENTIFICATION

Operator	NOBLE ENERGY, INC	Well	Reveille A34-746
Field	WELD COUNTY (NOBLE NAD 83 GRID)	API	0512350793
Facility	SEC.34-T06N-R64W	Wellbore	Reveille A34-746 AWB
Slot	SLOT#25 Reveille A34-746 (632'FSL & 1508'FWL,SEC.34)		

WELLPATH DATA (184 stations)

MD [ft]	Inclination [°]	Azimuth [°]	TVD [ft]	Vert Sect [ft]	North [ft]	East [ft]	Latitude	Longitude	DLS [°/100ft]	Comments
14199.00	89.720	359.200	6738.22	6776.59	6661.62	1312.71	40.4554952	-104.5353642	0.28	
14293.00	89.780	359.910	6738.63	6869.67	6755.62	1311.98	40.4557532	-104.5353632	0.76	
14388.00	90.280	0.220	6738.58	6963.85	6850.62	1312.09	40.4560139	-104.5353591	0.62	
14483.00	90.000	1.580	6738.35	7058.20	6945.60	1313.58	40.4562746	-104.5353500	1.46	
14578.00	89.660	0.230	6738.63	7152.56	7040.59	1315.08	40.4565352	-104.5353409	1.47	
14672.00	89.780	0.390	6739.09	7245.80	7134.58	1315.59	40.4567932	-104.5353354	0.21	
14767.00	89.910	0.890	6739.35	7340.10	7229.58	1316.65	40.4570539	-104.5353279	0.54	
14862.00	89.660	0.180	6739.70	7434.38	7324.57	1317.54	40.4573146	-104.5353210	0.79	
14956.00	89.940	0.860	6740.03	7527.67	7418.57	1318.39	40.4575726	-104.5353142	0.78	
15051.00	89.970	1.200	6740.11	7622.05	7513.55	1320.10	40.4578332	-104.5353044	0.36	
15145.00	89.880	1.230	6740.23	7715.47	7607.53	1322.09	40.4580911	-104.5352936	0.10	
15240.00	90.030	359.290	6740.31	7809.69	7702.52	1322.52	40.4583518	-104.5352883	2.05	
15335.00	89.850	359.380	6740.40	7903.70	7797.52	1321.42	40.4586126	-104.5352885	0.21	
15429.00	89.880	359.220	6740.63	7996.72	7891.51	1320.27	40.4588706	-104.5352890	0.17	
15524.00	89.940	359.540	6740.78	8090.75	7986.51	1319.24	40.4591314	-104.5352890	0.34	
15619.00	89.690	359.330	6741.08	8184.79	8081.50	1318.31	40.4593921	-104.5352886	0.34	
15713.00	89.880	359.590	6741.43	8277.85	8175.50	1317.42	40.4596502	-104.5352881	0.34	
15808.00	91.020	359.770	6740.69	8371.94	8270.49	1316.89	40.4599109	-104.5352863	1.21	
15903.00	90.310	359.820	6739.59	8466.06	8365.48	1316.55	40.4601716	-104.5352838	0.75	
15997.00	90.620	0.200	6738.82	8559.23	8459.48	1316.57	40.4604296	-104.5352801	0.52	
16092.00	89.820	357.940	6738.46	8653.18	8554.46	1315.02	40.4606904	-104.5352819	2.52	
16186.00	90.680	358.720	6738.05	8745.95	8648.42	1312.28	40.4609483	-104.5352881	1.24	
16281.00	90.120	358.650	6737.38	8839.81	8743.39	1310.10	40.4612091	-104.5352922	0.59	
16375.00	90.550	358.710	6736.84	8932.67	8837.36	1307.94	40.4614671	-104.5352963	0.46	
16470.00	90.370	359.000	6736.07	9026.57	8932.34	1306.04	40.4617278	-104.5352994	0.36	
16564.00	90.400	358.750	6735.44	9119.49	9026.32	1304.20	40.4619858	-104.5353024	0.27	
16659.00	90.490	359.020	6734.70	9213.39	9121.30	1302.35	40.4622466	-104.5353053	0.30	
16754.00	90.310	358.830	6734.04	9307.31	9216.28	1300.56	40.4625073	-104.5353080	0.28	
16848.00	90.400	358.730	6733.46	9400.20	9310.26	1298.56	40.4627653	-104.5353115	0.14	
16943.00	90.430	359.430	6732.77	9494.15	9405.24	1297.04	40.4630261	-104.5353133	0.74	

REFERENCE WELLPATH IDENTIFICATION

Operator	NOBLE ENERGY, INC	Well	Reveille A34-746
Field	WELD COUNTY (NOBLE NAD 83 GRID)	API	0512350793
Facility	SEC.34-T06N-R64W	Wellbore	Reveille A34-746 AWB
Slot	SLOT#25 Reveille A34-746 (632'FSL & 1508'FWL,SEC.34)		

WELLPATH DATA (184 stations) † = interpolated, ‡ = extrapolated station

MD [ft]	Inclination [°]	Azimuth [°]	TVD [ft]	Vert Sect [ft]	North [ft]	East [ft]	Latitude	Longitude	DLS [°/100ft]	Comments
17037.00	90.620	359.830	6731.91	9587.24	9499.23	1296.43	40.4632841	-104.5353118	0.47	
17132.00	89.880	359.800	6731.49	9681.37	9594.23	1296.12	40.4635448	-104.5353092	0.78	
17226.00	89.910	0.060	6731.67	9774.53	9688.23	1296.01	40.4638028	-104.5353059	0.28	LAST BH MWD SURVEY
17277.00‡	89.910	0.060	6731.75	9825.09	9739.23	1296.06	40.4639428	-104.5353038	0.00	PROJECTION TO BIT

HOLE & CASING SECTIONS - Ref Wellbore: Reveille A34-746 AWB Ref Wellpath: Reveille A34-746 AWP

String/Diameter	Start MD [ft]	End MD [ft]	Interval [ft]	Start TVD [ft]	End TVD [ft]	Start N/S [ft]	Start E/W [ft]	End N/S [ft]	End E/W [ft]
9.625in Casing Surface	30.00	1943.00	1913.00	30.00	1942.97	0.03	0.04	0.80	-3.85

REFERENCE WELLPATH IDENTIFICATION

Operator	NOBLE ENERGY, INC	Well	Reveille A34-746
Field	WELD COUNTY (NOBLE NAD 83 GRID)	API	0512350793
Facility	SEC.34-T06N-R64W	Wellbore	Reveille A34-746 AWB
Slot	SLOT#25 Reveille A34-746 (632'FSL & 1508'FWL,SEC.34)		

TARGETS

Name	TVD [ft]	North [ft]	East [ft]	Grid East [US ft]	Grid North [US ft]	Latitude	Longitude	Shape
SEC.26-T06N-R64W	1.00	-43.72	0.48	3267123.65	1403532.24	40.4371300	-104.5403400	polygon
	2D Polygon: dimensions not calculated							
SEC.27-T06N-R64W	1.00	-43.72	0.48	3267123.65	1403532.24	40.4371300	-104.5403400	polygon
	2D Polygon: dimensions not calculated							
SEC.34-T06N-R64W	1.00	-43.72	0.48	3267123.65	1403532.24	40.4371300	-104.5403400	polygon
	2D Polygon: dimensions not calculated							
SEC.35-T06N-R64W	1.00	-43.72	0.48	3267123.65	1403532.24	40.4371300	-104.5403400	polygon
	2D Polygon: dimensions not calculated							
Reveille A34-746 TPZ REV-2 (460'FSL & 2388'FEL,SEC.34)	6721.00	-142.14	1388.89	3268512.01	1403433.83	40.4368185	-104.5353565	point
Reveille A34-746 BHL REV-1 (200'FNL & 2373'FEL,SEC.27)	6736.00	9740.68	1296.74	3268419.86	1413316.25	40.4639467	-104.5353013	point
Reveille A34-746 TPZ REV-1 (460'FSL & 2388'FEL,SEC.34)	6737.00	-142.14	1388.89	3268512.01	1403433.83	40.4368185	-104.5353565	point

REFERENCE WELLPATH IDENTIFICATION

Operator	NOBLE ENERGY, INC	Well	Reveille A34-746
Field	WELD COUNTY (NOBLE NAD 83 GRID)	API	0512350793
Facility	SEC.34-T06N-R64W	Wellbore	Reveille A34-746 AWB
Slot	SLOT#25 Reveille A34-746 (632'FSL & 1508'FWL,SEC.34)		

WELLPATH COMPOSITION - Ref Wellbore: Reveille A34-746 AWB Ref Wellpath: Reveille A34-746 AWP

Start MD [ft]	End MD [ft]	Positional Uncertainty Model	Log Name/Comment	Wellbore	Survey Date
0.00	1936.00	Gyrodatta 2015 - GC+DROP+COND	Gyrodatta 2015 - GC+DROP+COND 13-1/2" <82 - 1936>	Reveille A34-746 AWB	2/11/2021
1936.00	17277.00	OWSG MWD rev2 (MS+IFR1) NOBLE	OWSG MWD rev2 (MS+IFR1) NOBLE 8-1/2" <1987 - 17226>	Reveille A34-746 AWB	3/7/2021

REFERENCE WELLPATH IDENTIFICATION

Operator	NOBLE ENERGY, INC	Well	Reveille A34-746
Field	WELD COUNTY (NOBLE NAD 83 GRID)	API	0512350793
Facility	SEC.34-T06N-R64W	Wellbore	Reveille A34-746 AWB
Slot	SLOT#25 Reveille A34-746 (632'FSL & 1508'FWL,SEC.34)		

WELLPATH COMMENTS

MD [ft]	Inclination [°]	Azimuth [°]	TVD [ft]	Comment
82.00	0.520	54.500	82.00	FIRST GYRODATA SURVEY
1936.00	0.710	262.250	1935.97	LAST GYRODATA SURVEY
1987.00	0.780	218.580	1986.97	FIRST BH MWD SURVEY
17226.00	89.910	0.060	6731.67	LAST BH MWD SURVEY
17277.00	89.910	0.060	6731.75	PROJECTION TO BIT