

# WHP Misty 2-7 (Location ID: 477612) Pit Closure

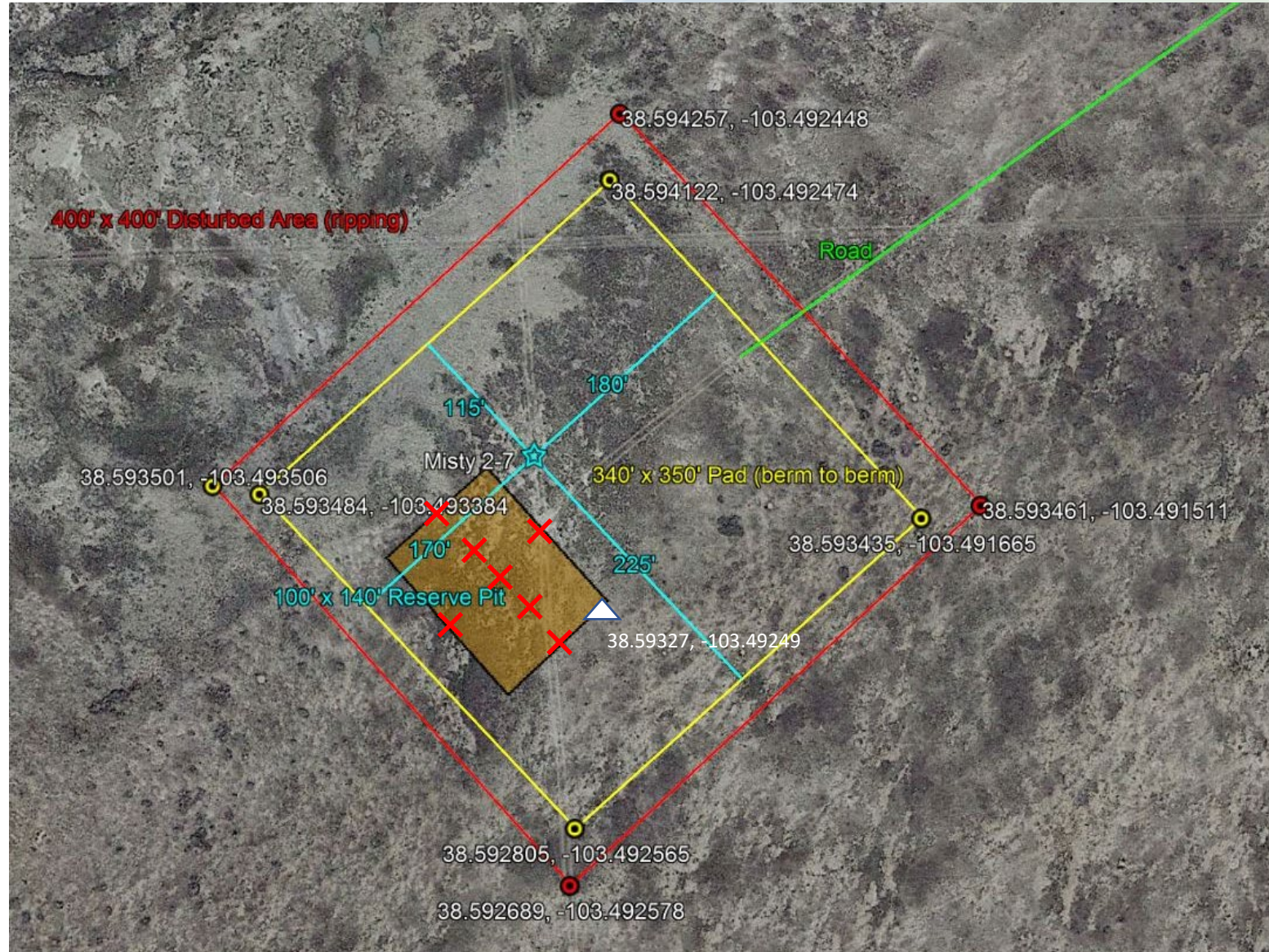
NW ¼ NE ¼ Sec. 7 T17S, R54W, 6<sup>th</sup> PM Lincoln  
County, Colorado

✘ Soil Sample Location  
(7 total)

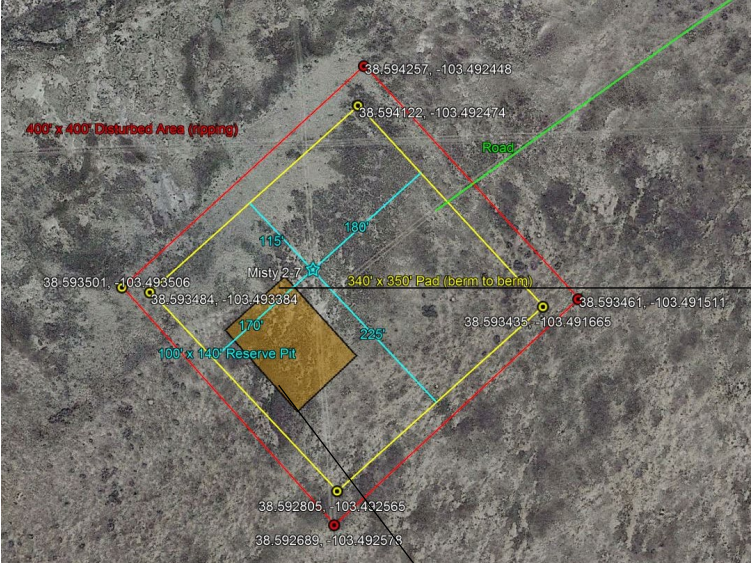
★ WHP Misty 2-7 wellhead  
(05-073-06776)  
38.593580, -103.492650

△ SE corner of pit

There are no facilities  
or equipment on site.

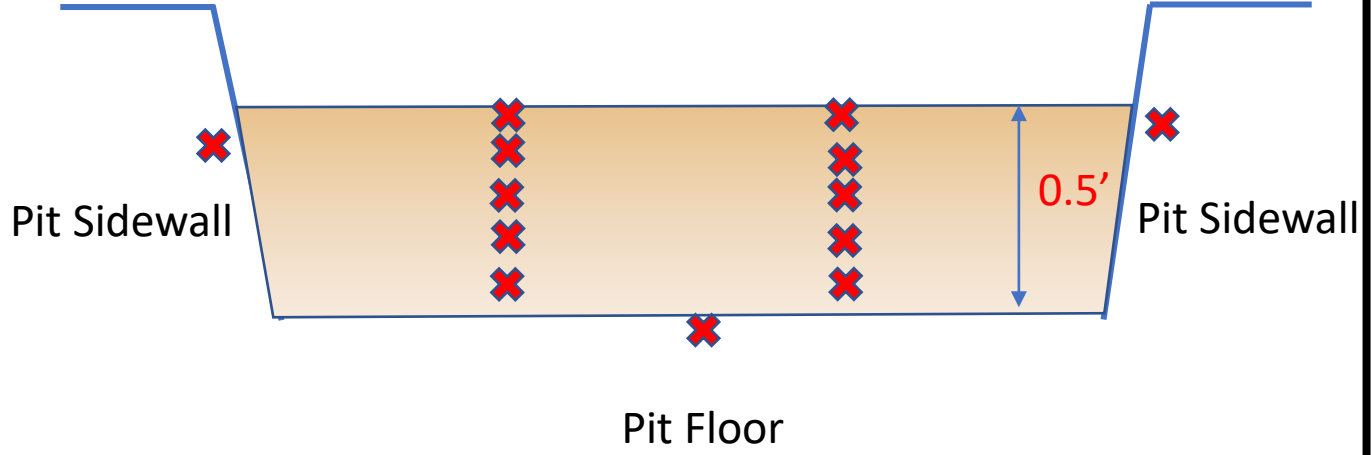


**WHP Misty 2-7 (Location ID: 477612) Pit Closure**  
 NW ¼ NE ¼ Sec. 7 T17S, R54W, 6<sup>th</sup> PM Lincoln County, Colorado



**100' x 140' Cuttings Pit Cross Section**

- Calculated cuttings volume: 168.2 cubic yards is based on hole sizes and caliper log, plus a 30% assumed expansion factor
- Calculated height of cuttings: 0.32 ft
- Estimated height of cuttings per visual inspection: 0.5 ft



**Sample Program:**

- (2) Composite samples (1 per 100 cubic yards of cuttings)
  - Composite Sample = 5 samples at different depths
- (4) Side wall samples (1-sample per side wall)
- (1) Pit Floor (Native Soil) sample

## WHP Misty 2-7 (Location ID: 477612) – Cutting's Volume

NW ¼ NE ¼ Sec. 7 T17S, R54W, 6<sup>th</sup> PM Lincoln County, Colorado

### **MISTY 2-7**

---

TD	7,140' MD
Logger's Depth	7,095' MD
Surface Hole Depth	487' BGL
Logged Interval	6,608' MD
Unlogged Interval (assume gauge)	45' MD

### **Theoretical Cuttings Volume**

---

6,653' of gauge 8¾" Prod Hole	2,778.2 ft <sup>3</sup>
487' of gauge 12¼" Surf Hole	398.6 ft <sup>3</sup>
<b>Theoretical Cuttings Vol.</b>	<b>3,176.8 ft<sup>3</sup></b>

### **"Measured" Cuttings Volume**

---

Caliper Volume (6,608' of hole)	3,095.3 ft <sup>3</sup>	114.6 yd <sup>3</sup>
Calculated Unlogged Hole Vol	36.8 ft <sup>3</sup>	1.4 yd <sup>3</sup>
Calculated Surface Hole Volume	398.6 ft <sup>3</sup>	14.8 yd <sup>3</sup>
Total Vol of Formation Removed	3,493.9 ft <sup>3</sup>	129.4 yd <sup>3</sup>
30% Expansion Factor	1,048.2 ft <sup>3</sup>	38.8 yd <sup>3</sup>
<b>TOTAL CUTTINGS VOLUME</b>	<b>4,542.1 ft<sup>3</sup></b>	<b>168.2 yd<sup>3</sup></b>

# WHP Misty 2-7 (Location ID: 477612) Pit Closure

NW ¼ NE ¼ Sec. 7 T17S, R54W, 6<sup>th</sup> PM  
Lincoln County, Colorado

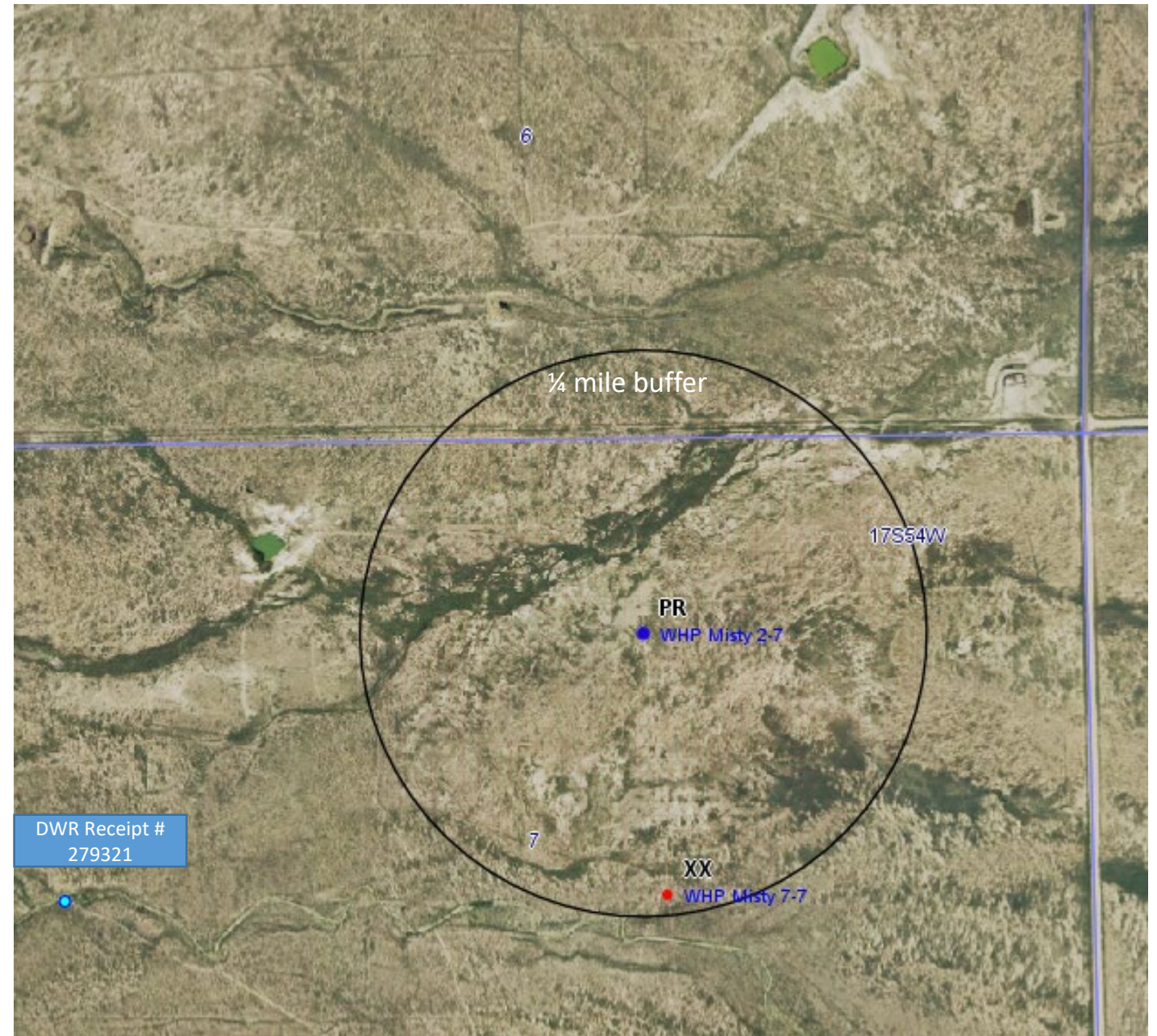
● Subject well

● Well (API Spot)

● Water Well

No High Priority Habitats within ¼ of a mile

No Surface Water within ¼ of a mile



# WHP Misty 2-7 (Location ID: 477612) Interim Reclamation

NW ¼ NE ¼ Sec. 7 T17S, R54W, 6<sup>th</sup> PM  
Lincoln County, Colorado

Note: 0.5 acre un-reclaimed  
for future rig work

