

April 29, 2021

Phillip Porter  
Senior Environmental Representative – Wattenberg  
PDC Energy Inc.  
[Phillip.Porter@pdce.com](mailto:Phillip.Porter@pdce.com)

**RE: Reclamation Assessment Report (Final Reclamation Completion Notice)**  
**COGCC Location Information: ANDREW HOP-65N65W /13NWSW (Location I.D. 323008)**  
**Operator Location Information: Andrew Hop 1 Well & Facility (API 05-123-12424)**  
**PDC Energy Inc. (Operator: 69175)**

Mr. Porter:

Confluence Compliance Companies LLC (Confluence) is presenting this letter to PDC Energy Inc. (PDC) documenting the results of a reclamation assessment that demonstrates successful completion of final reclamation efforts, per Colorado Oil & Gas Conservation Commission (COGCC) Rule 1004, on the above-referenced location. Attached is a topographic location map and a reclamation survey site map with additional location information.

Site visits, project correspondence and documentation, and the completed site assessment confirmed that the location has been final reclaimed, with no evidence of unrestored subsidence over two years. Based on the results of the survey, final reclamation, as defined by COGCC rules and regulations, has been achieved. Photographs exhibiting current site conditions are attached, along with the reclamation survey site map that illustrates the photo points.

On April 23, 2020, the location was visited and photographs documenting current site conditions were taken. These photographs show that all activities disturbing the ground have been completed, and all disturbed areas have been compacted, covered, graveled, or revegetated in such a way as to minimize erosion.

The landowner's designated final land use has changed from cropland to commercial. The property is utilized as a campground as part of the Platte River Fort and the disturbance area matches adjacent reference areas.

Please reach out with any questions you may have.  
Respectfully,



Carolyn Craveiro de Sá  
Project Manager  
720-289-1631 (M)  
720-432-7344 (O)  
[carolyn.craveiro@confluence-cc.com](mailto:carolyn.craveiro@confluence-cc.com)

**Attachments:**

1. Topographic Location Map
2. Reclamation Survey Site Map
3. Reclamation Assessment Photo Log

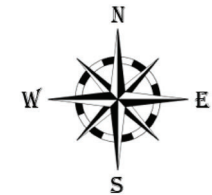
## Topographic Map

PDC Energy Inc.

CLIENT LOCATION NAME  
Andrew Hop 1 Well & Production Facility  
API: 05-123-12424

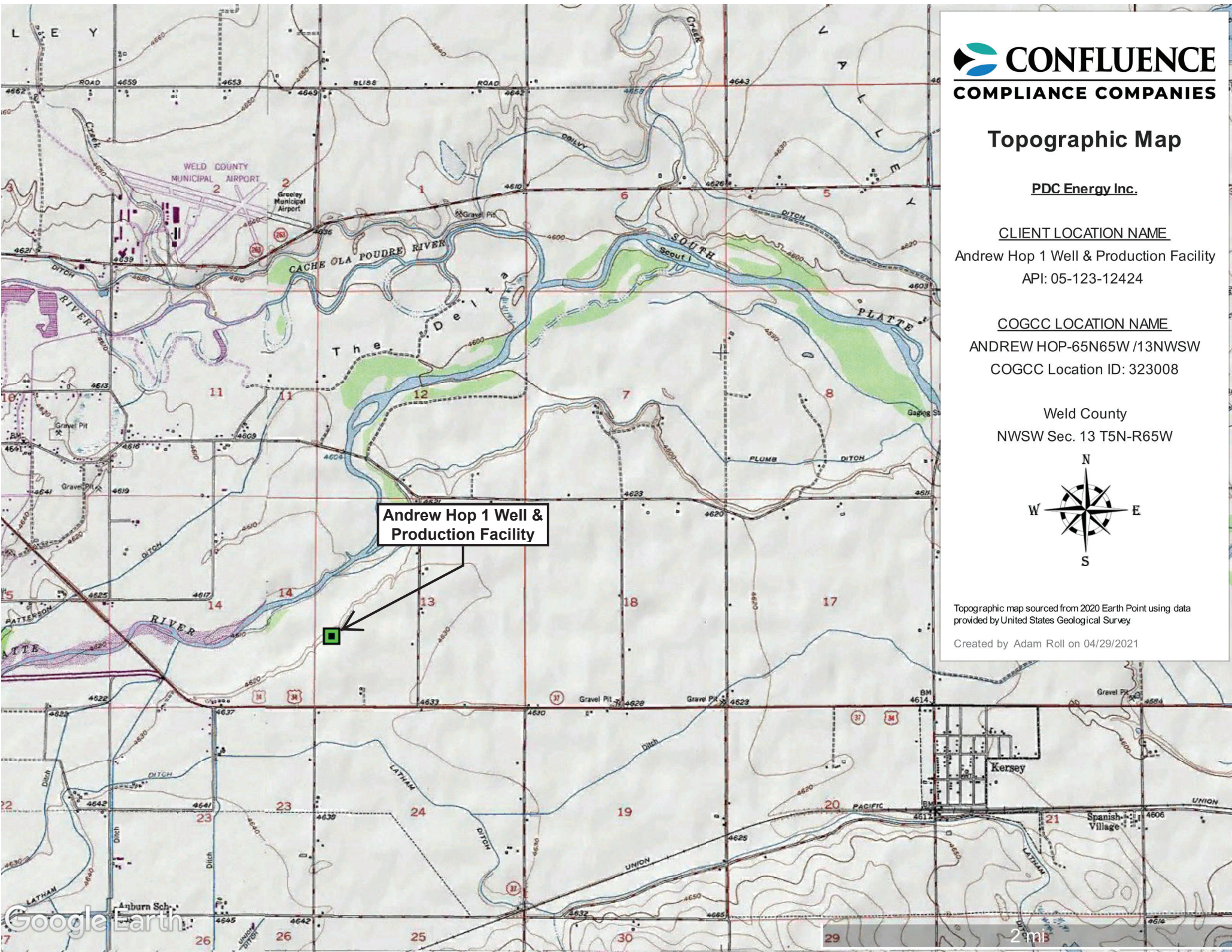
COGCC LOCATION NAME  
ANDREW HOP-65N65W /13NWSW  
COGCC Location ID: 323008

Weld County  
NWSW Sec. 13 T5N-R65W



Topographic map sourced from 2020 Earth Point using data provided by United States Geological Survey

Created by Adam Roll on 04/29/2021



**Andrew Hop 1 Well &  
Production Facility**

## Site Diagram



PDC Energy Inc.

CLIENT LOCATION NAME  
Andrew Hop 1 Well & Production  
Facility  
API: 05-123-12424

COGCC LOCATION NAME  
ANDREW HOP-65N65W /13NWSW  
COGCC Location ID: 323008

Weld County  
NWSW Sec. 13 T5N-R65W  
Land Use: Commercial  
Aerial Imagery Date: 09/07/2016

### Legend

-  Directional Photo Point
-  Reference Area Photo Point

Map created by Adam Roll on 04/29/2021



# Reclamation Assessment Photo Log

Date Completed - 04/23/2021

Client - PDC Energy Inc.

Operator Location Information (API) - **Andrew Hop 1 Well & Production Facility (05-123-12424)**

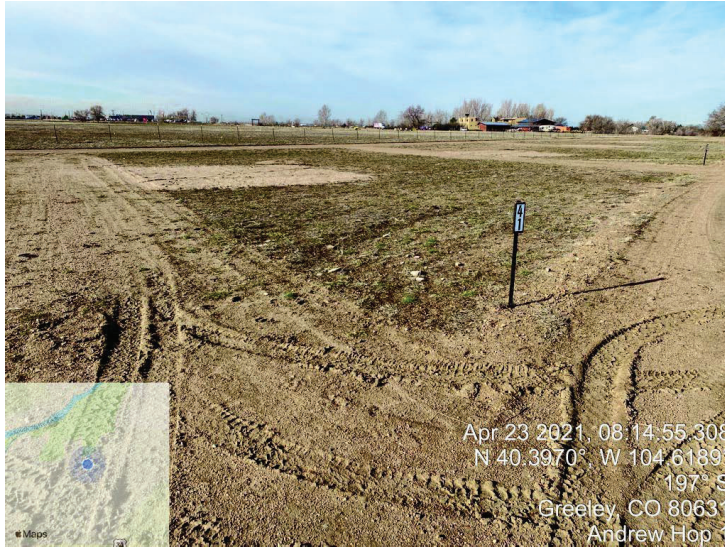


Photo Point A: North of Disturbance - Facing South



Photo Point B: South of Disturbance - Facing North



Photo Point C: West of Disturbance - Facing East



Photo Point D: East of Disturbance - Facing West

Geographic coordinates within these photos are provided by the location services of the mobile phone or tablet which collected the photo. Coordinate accuracy in this form is typically no greater than 1 meter, while the photo points illustrated in the site diagram associated with this submittal were collected with a high accuracy GPS unit with sub-meter accuracy. Discrepancies between the site diagram and photo coordinates may exist.

# Reclamation Assessment Photo Log

Date Completed - 04/23/2021

Client - **PDC Energy Inc.**

Operator Location Information (API) - **Andrew Hop 1 Well and Production Facility  
(05-123-12424)**



Photo Point E: Reference Area - Facing Northeast