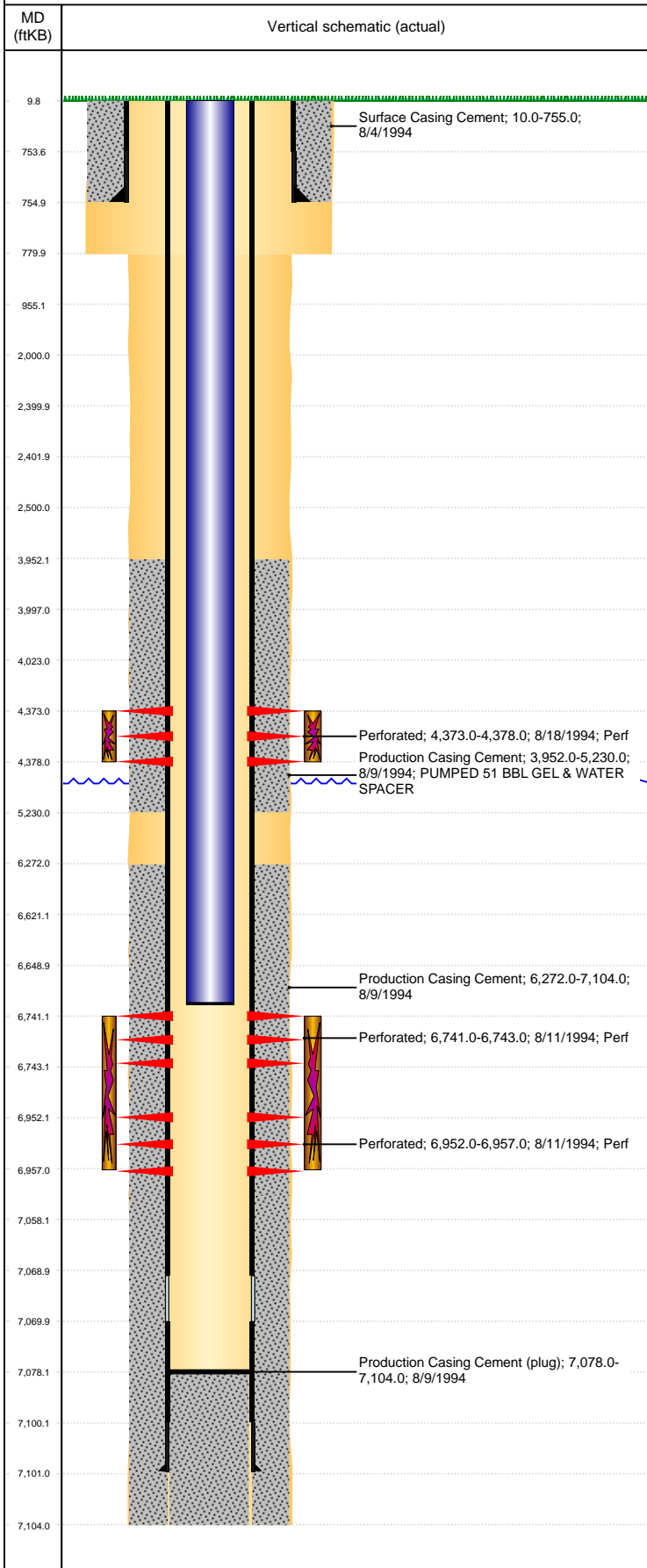


Well Name: LDS A 6-8

VERTICAL, ORIGINAL HOLE, 5/3/2021 5:55:59 PM



Well Header									
API 05-123-18435		Business Unit DJ BASIN			District 15		Well Config VERTICAL		
KB - GL / MSL (ft... 10.00		Spud Date 8/4/1994		P & A Date		Well Production Status SI			SoRT No
Comment									
Surface Location (Congressional)									
Qtr 3 SE	Qtr 4 NW	Section 8	Twnshp 3	Twنش... N	Range 64	Rng E/... W	Actual Latitude (°) 40.24170000	Actual Longitude (°) -104.57728000	
Wellbore Sections									
Section Des			Size (in)			Act Top, MD (ftKB)		Act Btm, MD (ftKB)	
SURFACE			12 1/4			10		780	
PRODUCTION			7 7/8			780		7,104	
Casing Strings									
Csg Des			Run Date		OD (in)	Wt/Len (lb/ft)	Grade	Top, MD (ftKB)	MD (ftKB)
Surface			8/4/1994		8 5/8	24.00		10.0	755.0
Production			8/8/1994		4 1/2	11.60	I-70	10.0	7,101.0
Cement									
Des					Start Date		Top (ftKB)		Btm (ftKB)
Surface Casing Cement					8/4/1994		10.0		755.0
Production Casing Cement					8/9/1994		3,952.0		5,230.0
Production Casing Cement					8/9/1994		6,272.0		7,104.0
Zone Statuses									
Zone Name	Status Date	Status	Fluid Type	Job				Prod Method	
SUSSEX	8/18/2016	PR	Water					Flowing	
SUSSEX	3/22/2017	SI							
NIOBRARA	8/18/2016	PR							
NIOBRARA	3/22/2017	SI							
CODELL	6/3/2014	PR							
CODELL	3/22/2017	SI							
Perforation Data									
Linked Zone		Bnch/Stg	Entered Shot Total	Top (ftKB)		Btm (ftKB)		Date	
SUSSEX, ORIGINAL HOLE		B	12	4,373.00		4,378.00		8/18/1994	
NIOBRARA, ORIGINAL HOLE			6	6,741.00		6,743.00		8/11/1994	
CODELL, ORIGINAL HOLE			12	6,952.00		6,957.00		8/11/1994	
Stimulation Intervals									
Zone				Start Date		Top (ftKB)		Btm (ftKB)	
SUSSEX, ORIGINAL HOLE				8/19/1994		4,373.0		4,378.0	
NIOBRARA-CODELL, ORIGINAL HOLE				8/15/1994		6,741.0		6,957.0	
HOLE									
Other In Hole									
Run Date		Des			Make		OD (in)	Top (ftKB)	Btm (ftKB)
Logs									
Date		Type					Top, MD (ftKB)		Btm, MD (ftKB)
8/8/1994		COMPENSATED DENSITY					4,200.0		7,102.0
8/8/1994		INDUCTION					766.0		7,051.0
8/11/1994		CBL/CCL/GR					3,830.0		7,052.0
Plug Back Total Depths									
Date		Type			Com				Depth (ftKB)
8/11/1994		FILL			DEPTH LOGGER ON CBL				7,058.0
8/24/1994		FILL			CLEAN OUT after frac				7,078.0