



COLORADO
Oil & Gas Conservation
Commission
Department of Natural Resources

Photo 1. Access road looking west.

Fee 139X API: 05-103-08762
Inspection: 701500535



40.13793, -108.86962, 5280.5ft, 244°
04/28/2021 02:56:35 PM



40.13776, -108.86976, 5283.7ft, 323°

04/28/2021 02:57:01 PM



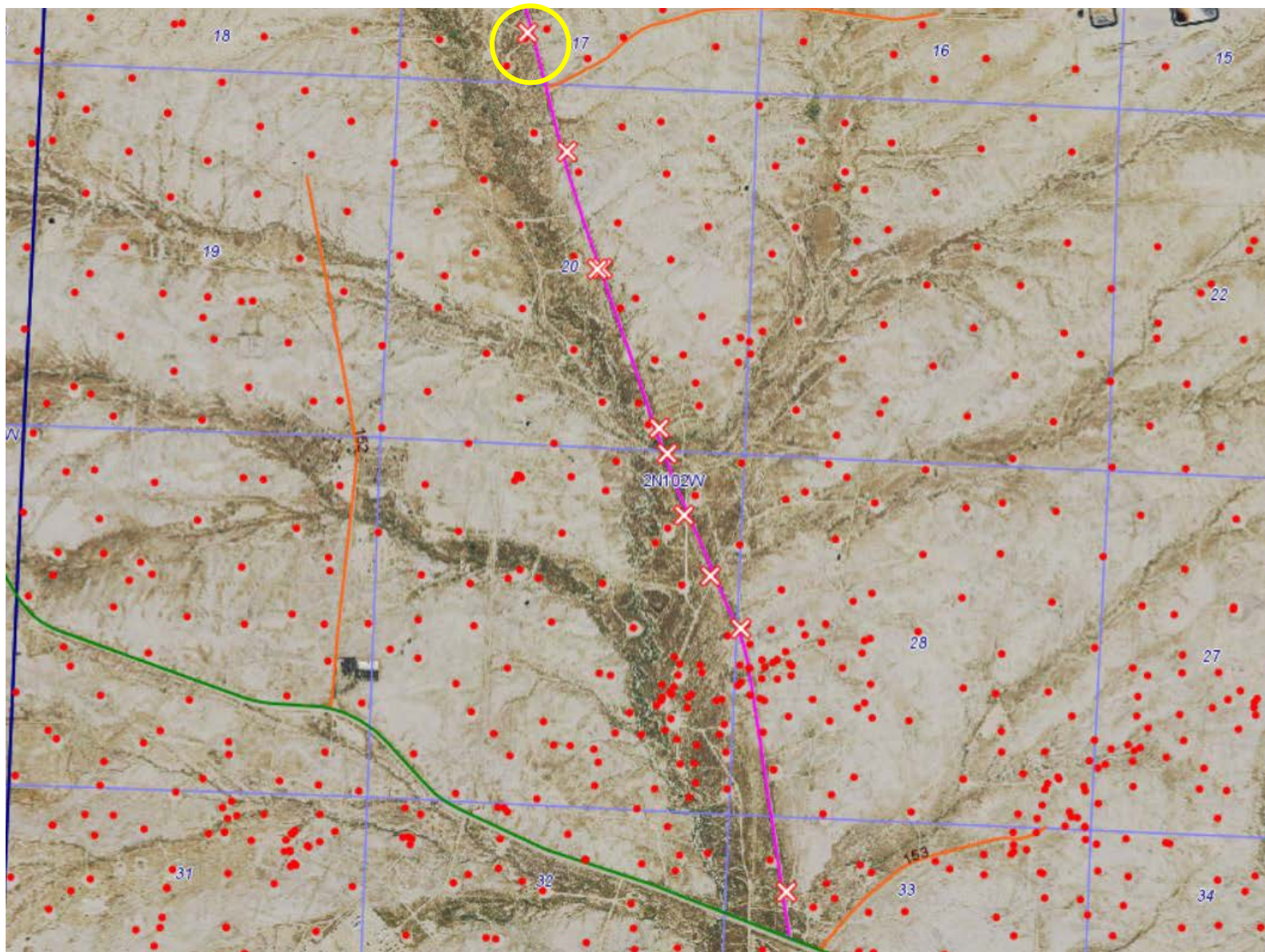
COLORADO
Oil & Gas Conservation
Commission
Department of Natural Resources

Photo 3. County Road 1 looking north.

Fee 139X API: 05-103-08762
Inspection: 701500535



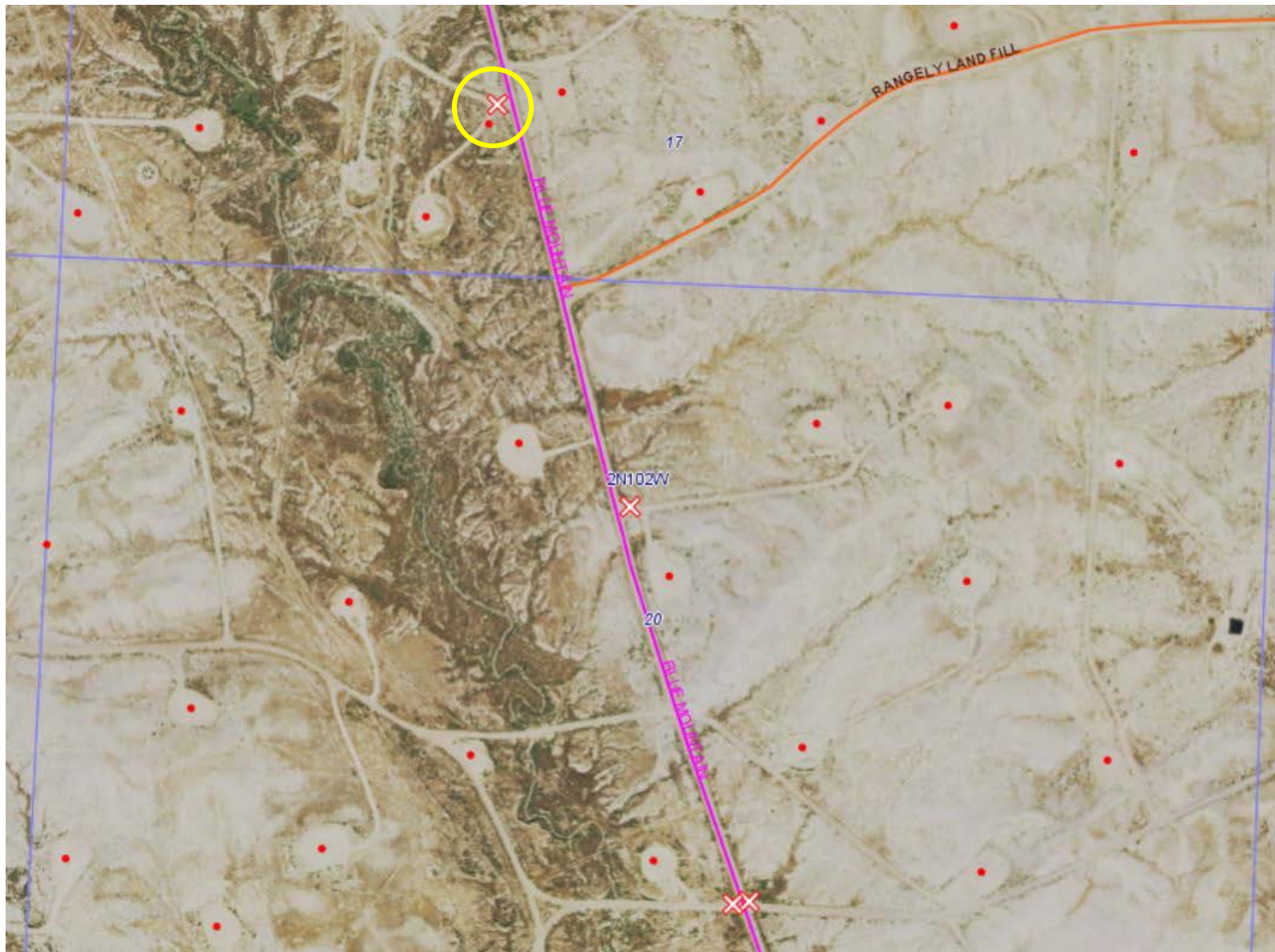
40.13793, -108.86982, 5270.5ft, 157°
04/28/2021 02:55:40 PM



COLORADO
Oil & Gas Conservation
Commission
Department of Natural Resources

Photo 5. Satellite image with tracking location circled.

Fee 139X API: 05-103-08762
Inspection: 701500535



COLORADO
Oil & Gas Conservation
Commission
Department of Natural Resources

Photo 6. Satellite image with tracking location circled.

Fee 139X API: 05-103-08762
Inspection: 701500535