



40.1285, -108.86556, 5223.9ft, 252°
04/28/2021 02:45:16 PM



40.12846, -108.86581, 5227.5ft, 73°
04/28/2021 02:45:41 PM



COLORADO
Oil & Gas Conservation
Commission
Department of Natural Resources

Photo 2. Access road looking east.

Fee 136X API: 05-103-08745
Inspection: 701500531



40.12834, -108.86562, 5230.7ft, 327°
04/28/2021 02:46:01 PM

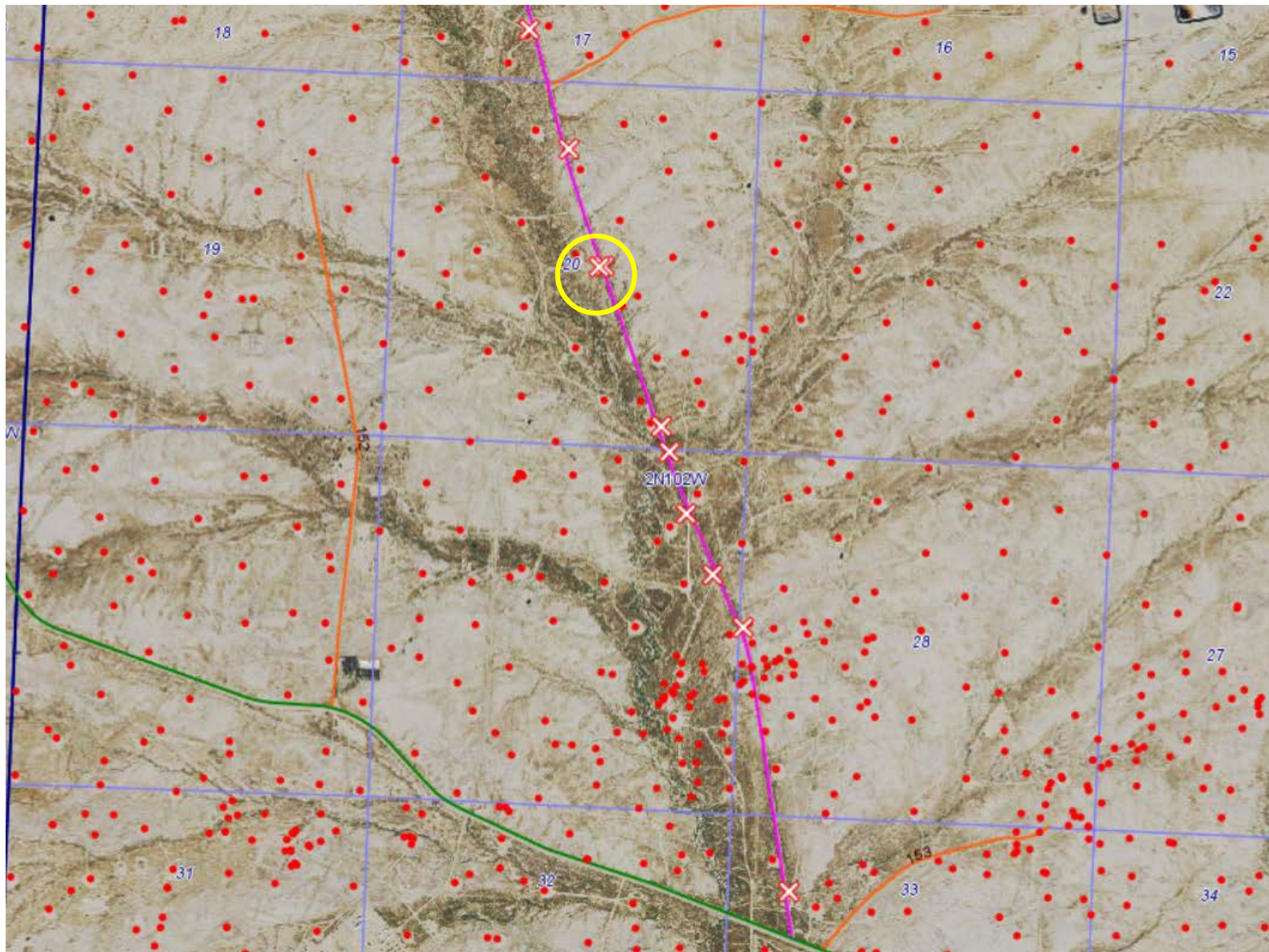


COLORADO
Oil & Gas Conservation
Commission
Department of Natural Resources

Photo 3. County Road 1 looking north.

Fee 136X API: 05-103-08745
Inspection: 701500531

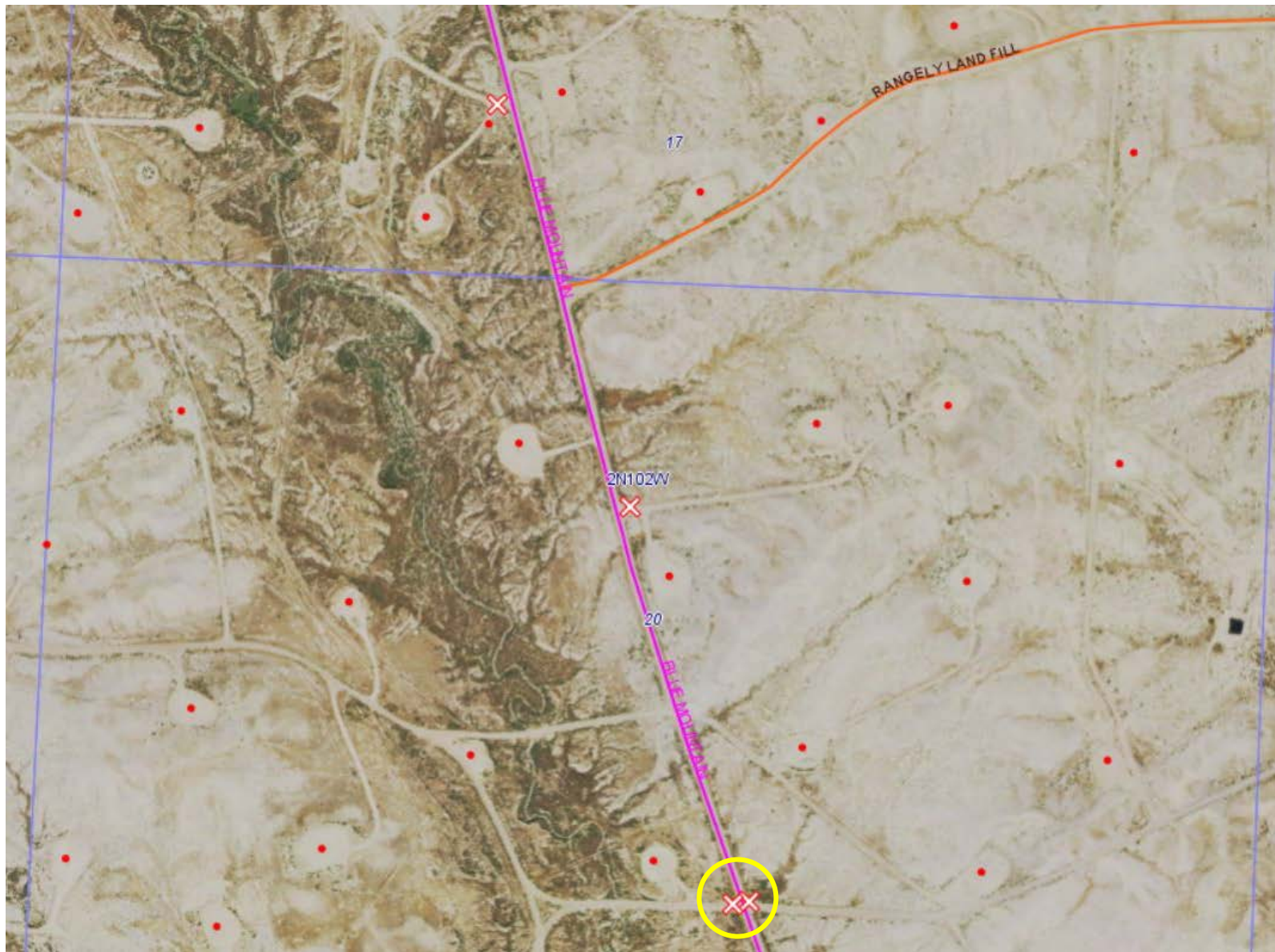




COLORADO
Oil & Gas Conservation
Commission
Department of Natural Resources

Photo 5. Satellite image with tracking location circled.

Fee 136X API: 05-103-08745
Inspection: 701500531



COLORADO
Oil & Gas Conservation
Commission
Department of Natural Resources

Photo 6. Satellite image with tracking location circled.

Fee 136X API: 05-103-08745
Inspection: 701500531