



40.11425, -108.85747, 5210.3ft, 263°
04/28/2021 02:21:40 PM



COLORADO
Oil & Gas Conservation
Commission
Department of Natural Resources

Photo 1. Access road looking west.

Fee 83X API: 05-103-06219
Inspection: 701500521



COLORADO
Oil & Gas Conservation
Commission
Department of Natural Resources

Photo 2. Access road looking east.

Fee 83X API: 05-103-06219
Inspection: 701500521



40.11411, -108.85753, 5206.8ft, 322°
04/28/2021 02:21:21 PM



COLORADO
Oil & Gas Conservation
Commission
Department of Natural Resources

Photo 3. County Road 1 looking north.

Fee 83X

API: 05-103-06219

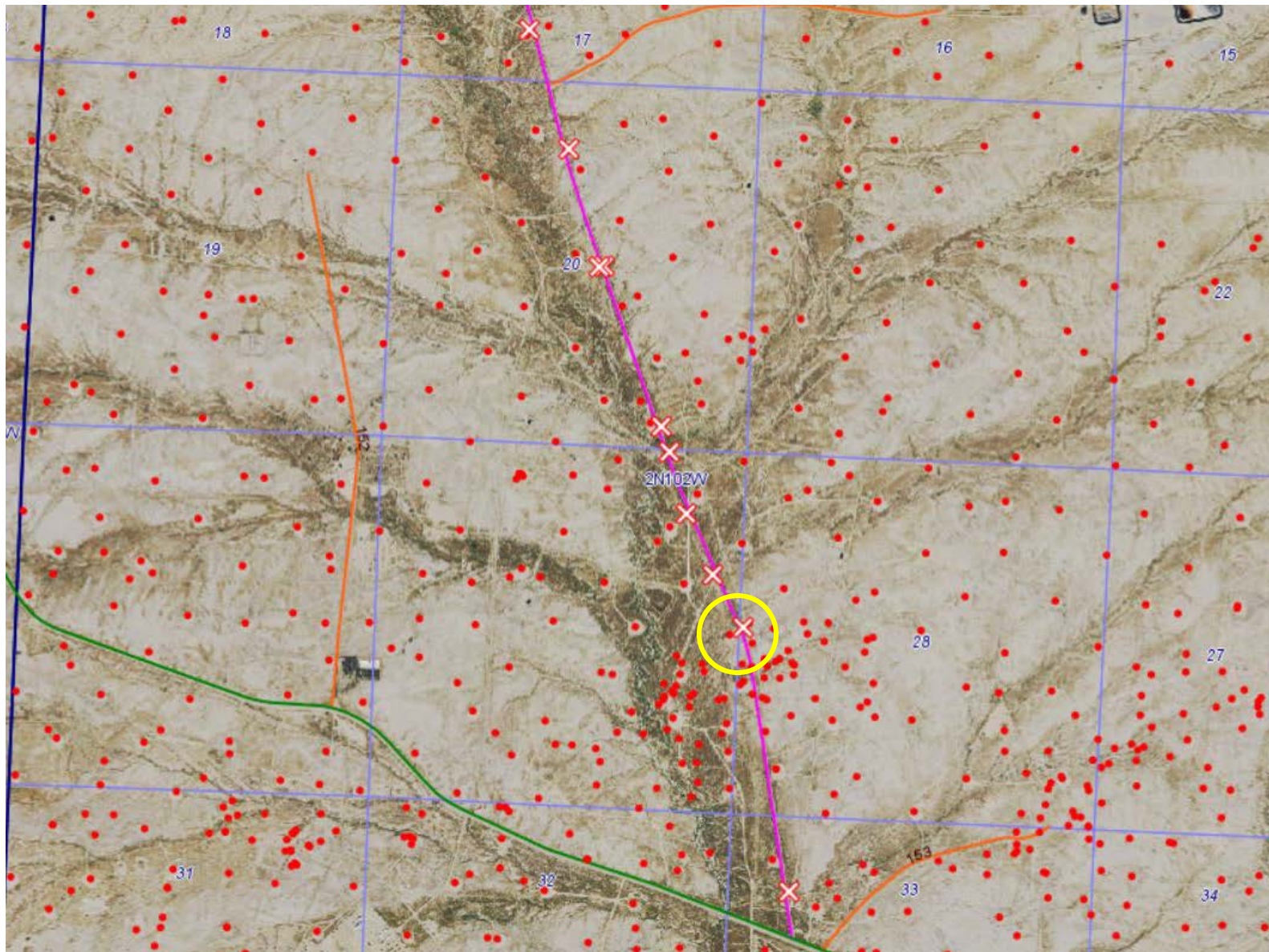
Inspection: 701500521



COLORADO
Oil & Gas Conservation
Commission
Department of Natural Resources

Photo 4. County Road 1 looking south.

Fee 83X API: 05-103-06219
Inspection: 701500521



COLORADO
Oil & Gas Conservation
Commission
Department of Natural Resources

**Photo 5. Satellite image with tracking location
circled.**

Fee 83X

API: 05-103-06219

Inspection: 701500521

