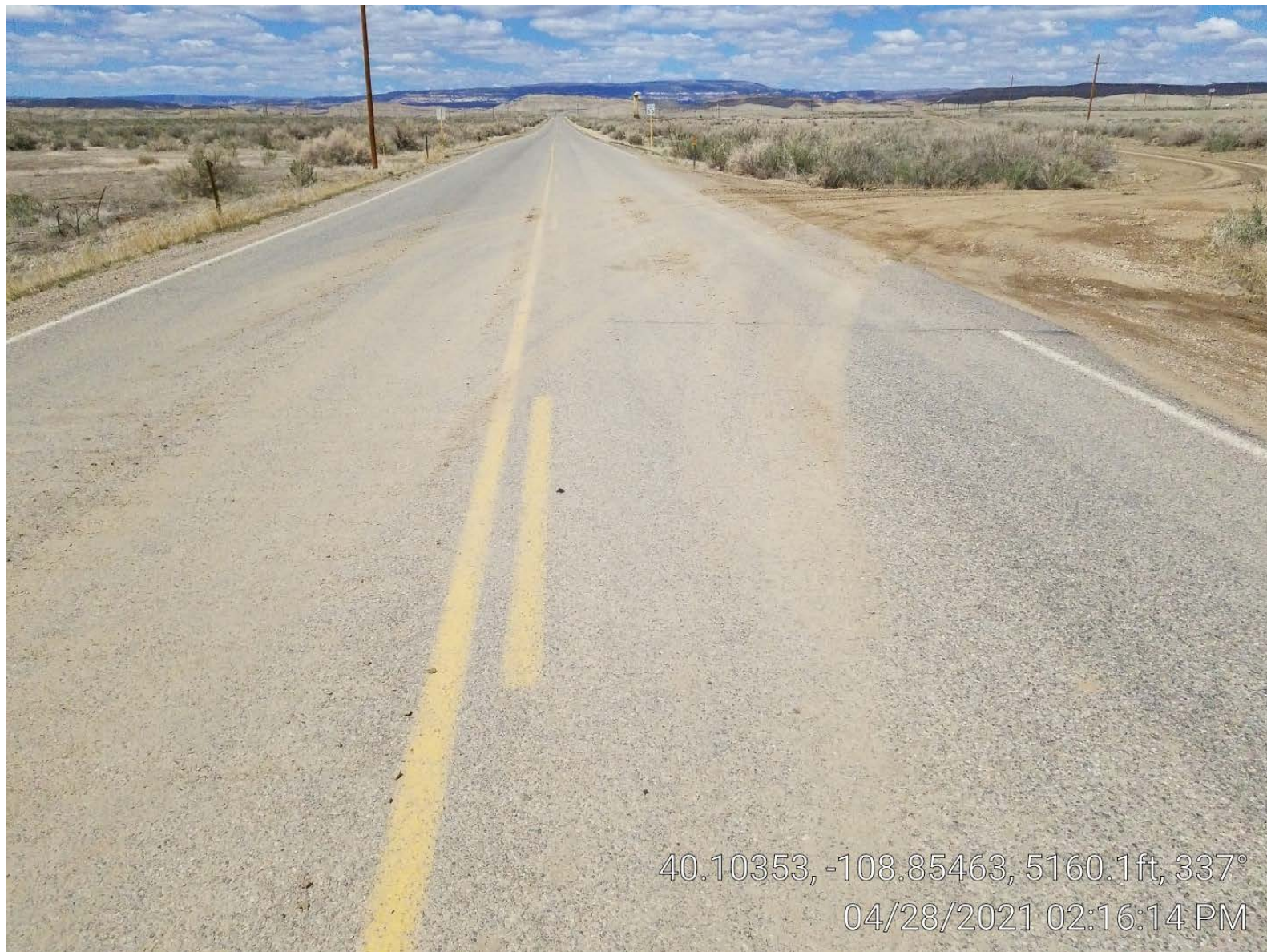




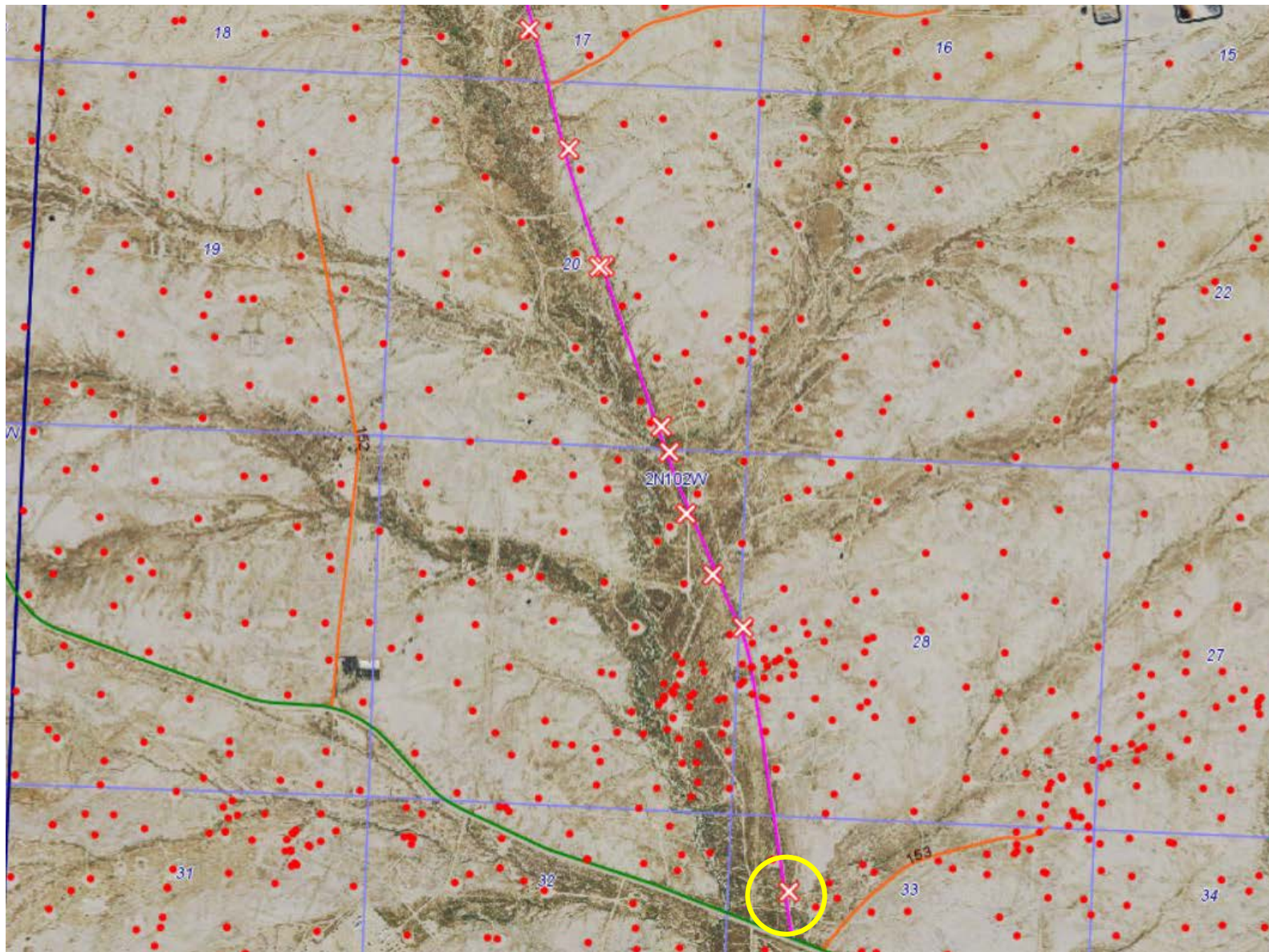
40.10373, -108.85448, 5143.0ft, 250°
04/28/2021 02:13:18 PM



40.10368, -108.85474, 5159.7ft, 69°
04/28/2021 02:13:48 PM



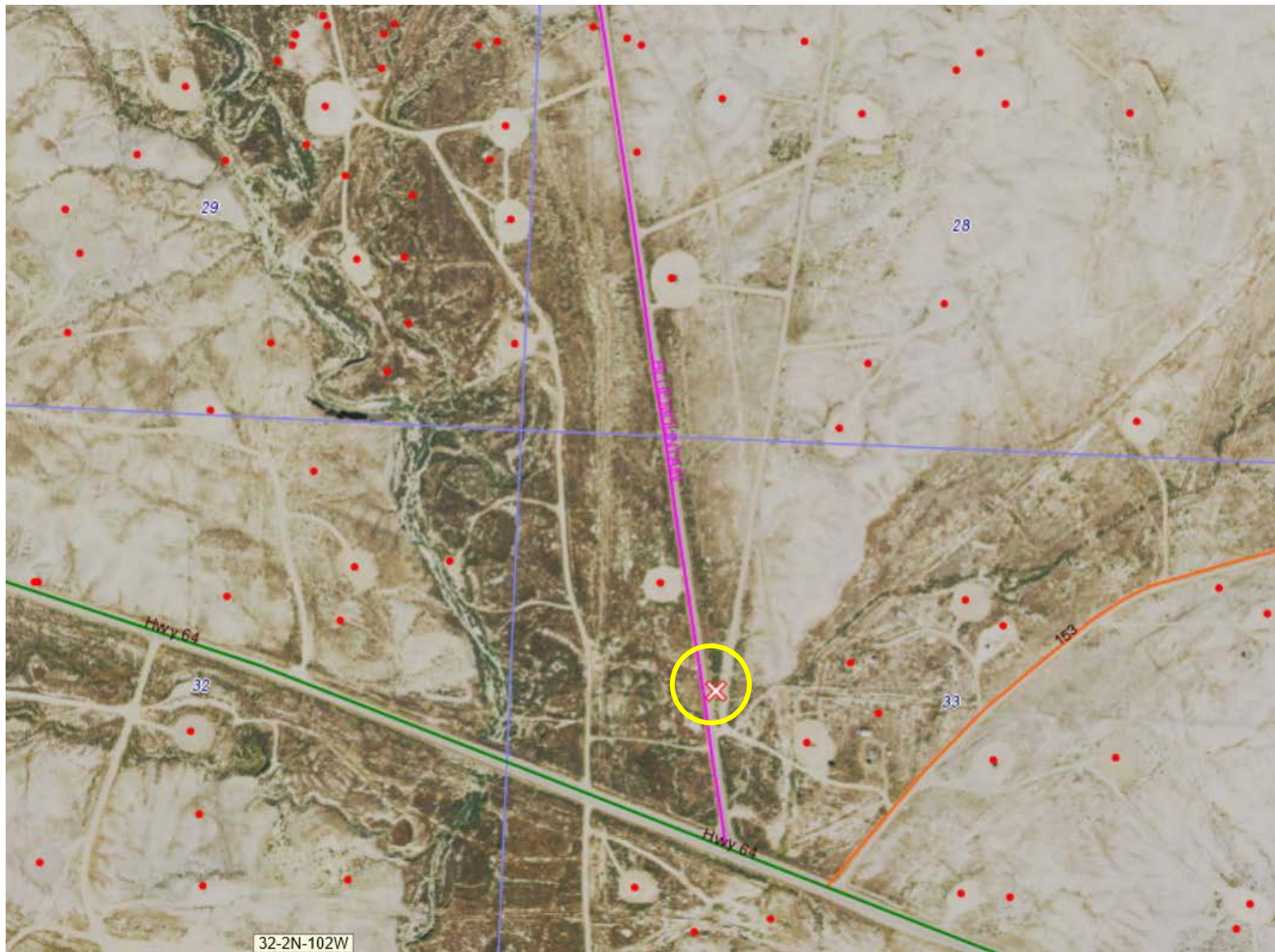




COLORADO
Oil & Gas Conservation
Commission
Department of Natural Resources

Photo 5. Satellite image with tracking location circled.

A.C. McLaughlin 10X28 API: 05-103-07490
Inspection: 701500519



COLORADO
Oil & Gas Conservation
Commission
Department of Natural Resources

Photo 6. Satellite image with tracking location circled.

A.C. McLaughlin 10X28 API: 05-103-07490
Inspection: 701500519