

# North Platte 22-24 Pad – Wellhead Cut & Cap

API: 05-123-25828, Loc ID: 310066

SE ¼ NW¼ Sec. 24, T5N,R63W, 6<sup>th</sup> PM

Weld County, Colorado

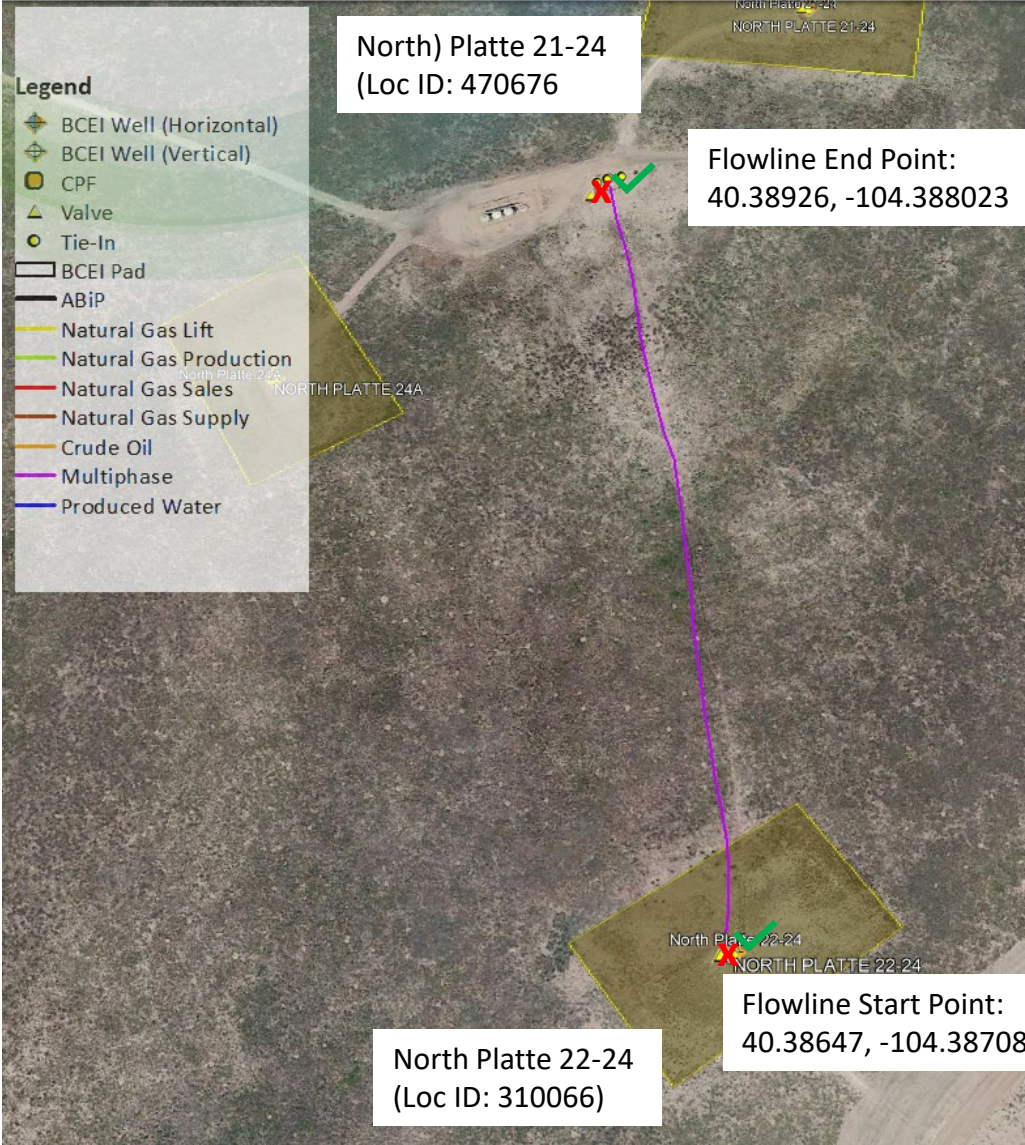
X - Soil Sample Location



Facility	Lat	Long
North Platte 22-24 wellhead (05-123-25828)	40.386470	-104.387080

# North Platte 22-24 Pad - Flowline Removal

SE ¼ NW¼ Sec. 24, T5N,R63W, 6<sup>th</sup> PM  
Weld County, Colorado



✓ Field Screening Location  
X - Soil Sample Location

OperFeatID	Line Type	Approx. length to be removed
NP 22-24 WH Line	Multiphase	~1075-ft




# North Platte 22-24 Wellhead Cut & Cap and Flowline Removal

API: 05-123-25828, Loc ID: 310066

SE ¼ NW¼ Sec. 24, T5N,R63W, 6<sup>th</sup> PM

Weld County, Colorado

 Rule 1202.d Density Habitats – Pronghorn Winter Concentration

 Well (API Spot)

 Water Well

 Flowline Start Point: 40.38647, -104.38708

 Flowline End Point: 40.38926, -104.388023

Receptor	DWR Receipt #	Distance (ft)	Direction	Well Depth(ft)	Static Water Level (ft)
Stock Water	9065625	580	NW	78	Not Recorded
Water Well	0014361	1000	SE	Never Drilled	Not Recorded
Residential	9063557	1600	NE	172	112

