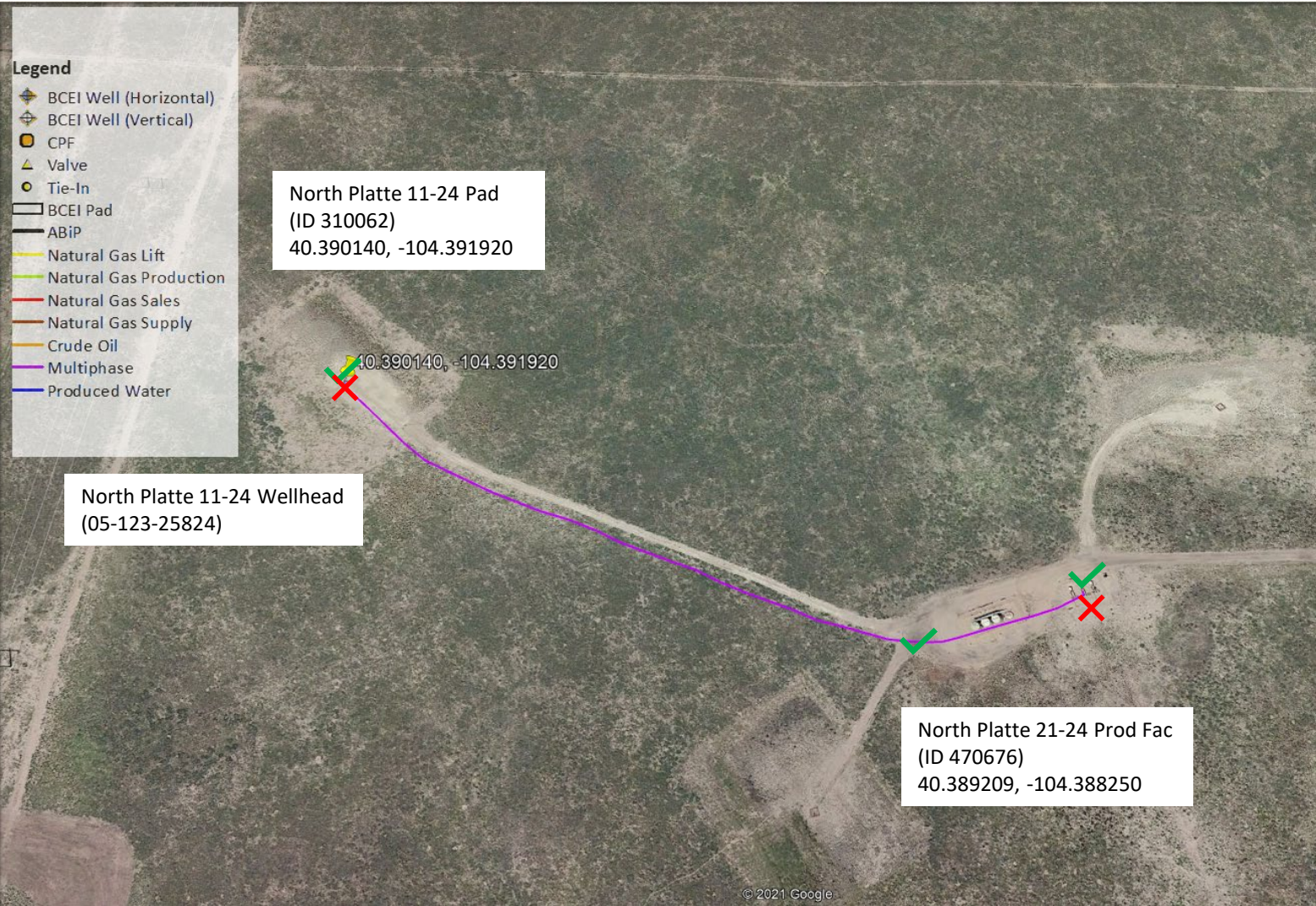


North Platte 11-24 (ID 310062) – Wellhead, and Flowline Decommission

NW ¼ NW ¼ Sec. 24 T5N, R63W, 6th PM

Weld County, Colorado



Site Investigation Points

- ✓ Visual Inspection Point
- ✗ Soil Sample Location

North Platte 11-24 Pad (ID: 310062)

All Associated Equipment

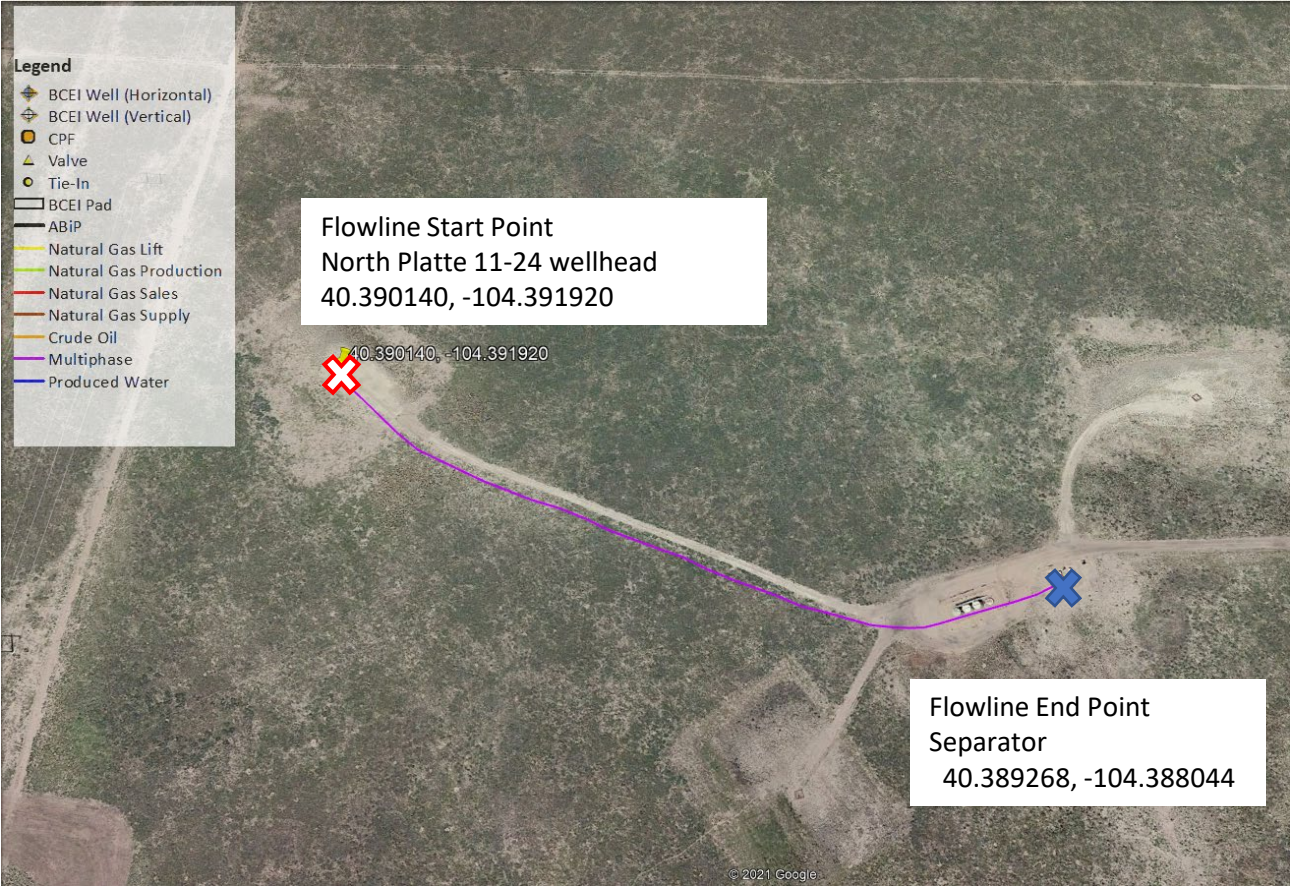
*No On-Location Flowlines Present

Equipment	Lat	Long	Plan
North Platte 11-24 wellhead (05-123-25824)	40.390140	-104.391920	Cut/Cap Well
North Platte 11-24 WH Line			Remove Flowline

North Platte 11-24 WH Line – Off-Location Flowline Removal






NW ¼ NW ¼ Sec. 24 T5N, R63W, 6th PM
Weld County, Colorado

Flowline Unique OperFeatID	Line Type	Start Location	Start Location Latitude	Start Location Longitude	End Location	End Location Latitude (Cut Point)	End Location Longitude (Cut Point)	Approx. length to be removed
NP 11-24 WH Line	Multiphase	North Platte 11-24 wellhead (05-123-25824)	40.390140	-104.391920	Separator	40.389268	-104.388044	~1206-ft



North Platte 11-24 (ID 310062)

NW ¼ NW ¼ Sec. 24 T5N, R63W, 6th PM
Weld County, Colorado

-  Well (API Spot)
-  Water Well
-  Pronghorn Winter Concentration
-  Flowline Start Point
-  Flowline End Point

Receptor	DWR Receipt #	Distance (ft)	Direction	Well Depth (ft)	Static Water Level (ft)
Stock Water	9065625	560	N	78	Not Recorded
Residential	9063557	1590	N	172	112
Water Well	0014361	1980	SE	Never Drilled	Not Recorded

¼ Mile Buffer: Wildlife and Hydrology Map

