

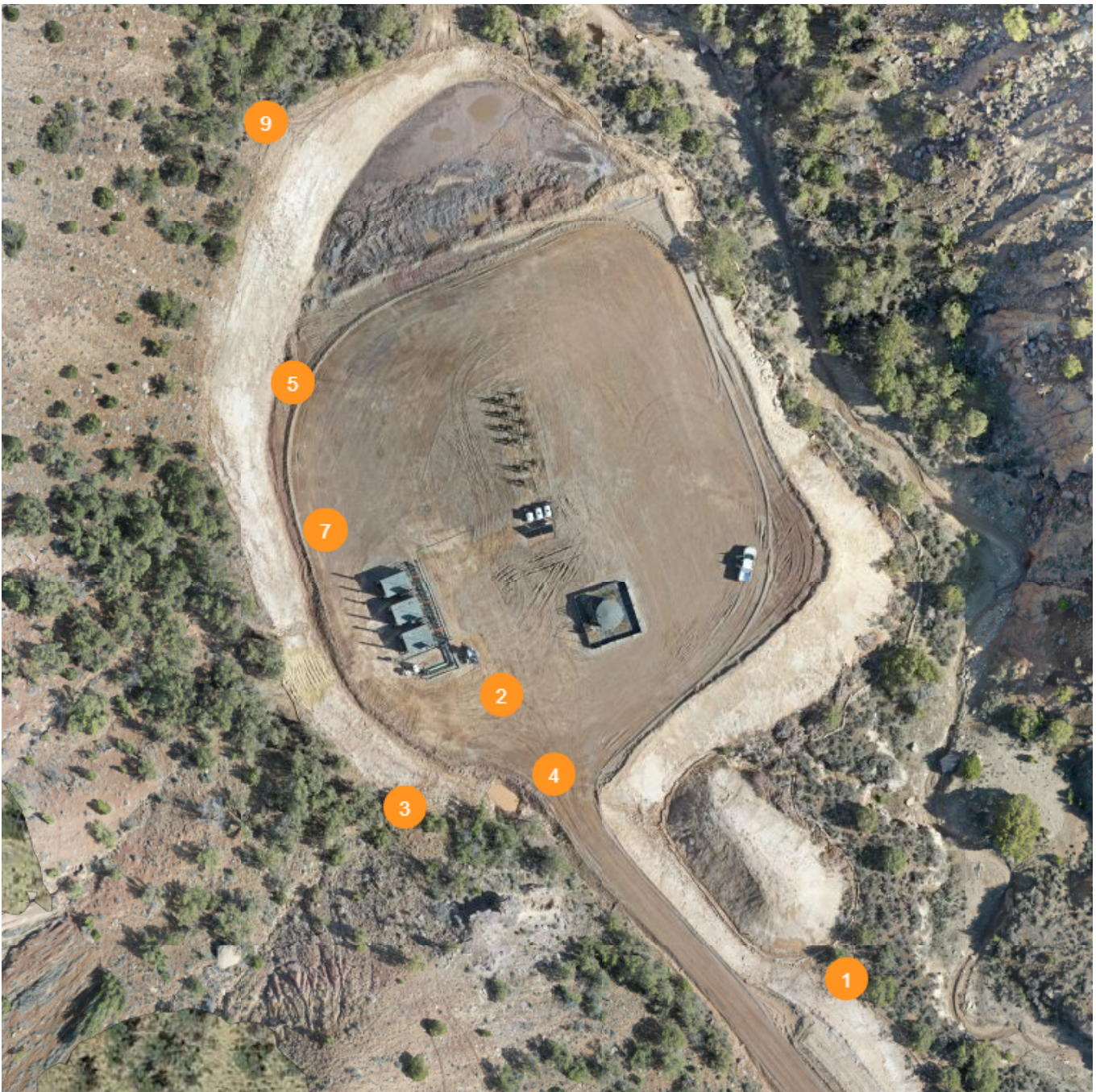
Colorado Oil and Gas Conservation Commission

TEP Federal PA 31-26 Issue Report



Created on April 21, 2021

Captured: April 16, 2021



1 - Erosion **OPEN**

Apr 16, 2021 at 9:09am



Type

Erosion

Lat/Long

39.49923, -107.96357

Summary

Stabilization control measure at topsoil pile degrading.

Created

Apr 21, 2021 at 2:53pm by Aaron Trujillo

2 - Erosion **OPEN**

Apr 16, 2021 at 9:09am



Type

Erosion

Lat/Long

39.49965, -107.96422

Summary

Pad stabilization issues remain evident

Created

Apr 21, 2021 at 3:01pm by Aaron Trujillo

3 - Erosion **OPEN**

Apr 16, 2021 at 9:09am

**Type**

Erosion

Lat/Long

39.49948, -107.96440

Summary

Terrace grading installed along area of cut slope that receives concentrated flows. Operator has installed erosion logs as a runoff control measure and hydromulch to the terraced slope. Soils along terrace are unconsolidated and not sufficiently stabilized. Straw wattles are not an appropriate control measure for areas with concentrated flows; runoff controls remain missing or insufficient.

Created

Apr 21, 2021 at 3:23pm by Aaron Trujillo

4 - Erosion OPEN

Apr 16, 2021 at 9:09am

**Type**

Erosion

Lat/Long

39.49953, -107.96412

Summary

Operator has implemented rock armoring along areas of the cut slope that receive concentrated runoff flows; control measure does not appear to be appropriate in size, and has not been installed with geotextile lining in accordance with good engineering practices. An erosion log has been installed as a runoff control; straw wattles are not an appropriate control measure for areas with concentrated flows; runoff controls remain missing or insufficient on the Location

Created

Apr 21, 2021 at 3:37pm by Aaron Trujillo

5 - Erosion **OPEN**

Apr 16, 2021 at 9:09am



Type

Erosion

Lat/Long

39.50010, -107.96461

Summary

Berm has been constructed along perimeter of the current production area; berm remains improperly constructed per good engineering practices; berm is not compacted.

Created

Apr 21, 2021 at 3:42pm by Aaron Trujillo

6 - Erosion **OPEN**

Apr 16, 2021 at 9:09am



Type

Erosion

Lat/Long

39.50010, -107.96461

Summary

Example where runoff control measures have not been installed; runoff control measures remain missing or insufficient on the Location.

Created

Apr 21, 2021 at 3:43pm by Aaron Trujillo

7 - Erosion OPEN

Apr 16, 2021 at 9:09am

**Type**

Erosion

Lat/Long

39.49989, -107.96455

Summary

Operator has implemented rock armoring along areas of the cut slope that receive concentrated runoff flows; control measure has not been installed in accordance with good engineering practices; control measure has not been installed with geotextile lining; slope protection insufficient.

Created

Apr 21, 2021 at 3:46pm by Aaron Trujillo

8 - Erosion OPEN

Apr 16, 2021 at 9:09am

**Type**

Erosion

Lat/Long

39.49989, -107.96455

Summary

Sediment trap outlet has not been installed with a geotextile liner per good engineering practices. Additionally, runoff concentrated flow is coming from an ~12 acre area; sediment trap does not appear to be sufficient in size.

Created

Apr 21, 2021 at 3:47pm by Aaron Trujillo

9 - Erosion OPEN

Apr 16, 2021 at 9:09am



Type

Erosion

Lat/Long

39.50048, -107.96467

Summary

Rill erosion on cut slopes. Areas also provide example where runoff control measures remain missing or insufficient.

Created

Apr 21, 2021 at 3:48pm by Aaron Trujillo

Colorado Oil and Gas Conservation Commission

TEP Federal PA 31-26 Issue Report



Created on April 21, 2021

Captured: April 16, 2021



10 - Erosion **OPEN**

Apr 16, 2021 at 10:16am



Type

Erosion

Lat/Long

39.49700, -107.95871

Summary

Operator has implemented sediment traps along access road; control measures has not been installed with a geotextile liner in accordance with good engineering practices.

Created

Apr 21, 2021 at 3:52pm by Aaron Trujillo

11 - Erosion OPEN

Apr 16, 2021 at 10:16am



Type

Erosion

Lat/Long

39.49700, -107.95871

Summary

Operator has implemented sediment traps along access road; control measures has not been installed with a geotextile liner in accordance with good engineering practices.

Created

Apr 21, 2021 at 3:52pm by Aaron Trujillo

12 - Erosion OPEN

Apr 16, 2021 at 10:16am

**Type**

Erosion

Lat/Long

39.49700, -107.95871

Summary

Additional work performed at stream crossing; it is unclear if work conducted will provide long term stabilization to the channel, however, control measures remain inadequate/insufficient to prevent sediment/pollutant discharge from vehicles and equipment traveling through the intermittent stream and drainage.

Created

Apr 21, 2021 at 4:01pm by Aaron Trujillo

13 - Erosion **OPEN**

Apr 16, 2021 at 10:16am



Type

Erosion

Lat/Long

39.49669, -107.95839

Summary

Sediment deposition observed in the gravel placed at the stream crossing; control measures remain inadequate/insufficient to prevent sediment/pollutant discharge from vehicles and equipment traveling through the intermittent stream and drainage.

Created

Apr 21, 2021 at 4:04pm by Aaron Trujillo

Inspection Photos

4/16/2021

Operator: TEP ROCKY MOUNTAIN LLC #
96850

Location ID: 475753
Garfield County, CO

Aaron Trujillo
NW Reclamation Specialist
COGCC

Inspection Photos
Operator Name: TEP ROCKY MOUNTAIN LLC # 96850
Location ID: 475753



Photo 1: Photo taken from the Location. Photo shows control measures to stabilize/protect unpaved areas of the Location remain missing or insufficient. 6 foot measuring stick for reference.

Inspection Photos

Operator Name: TEP ROCKY MOUNTAIN LLC # 96850

Location ID: 475753



Photo 2: Photo taken from the Location, facing northeast. Photo shows control measures to stabilize/protect unpaved areas of the Location remain missing or insufficient.



Inspection Photos
Operator Name: TEP ROCKY MOUNTAIN LLC # 96850
Location ID: 475753



Photo 3: Photo shows sediment trap on the southwest end o the Location. Outlet at trap has not been installed in accordance with good engineering practices.

Inspection Photos

Operator Name: TEP ROCKY MOUNTAIN LLC # 96850

Location ID: 475753



Photo 4: Photo taken from the cut slope on the southwest end of the Location. Photo shows Operator has implemented rock armoring along areas of the cut slope where erosion degradation was previously observed; control measure does not appear to be appropriate in size to stabilize the slopes, and has not been installed with geotextile lining in accordance with good engineering practices.



Inspection Photos

Operator Name: TEP ROCKY MOUNTAIN LLC # 96850

Location ID: 475753



Photo 5: Continued from photo 4. Photo shows control measure has not been installed in accordance with good engineering practices; BMP insufficient to stabilize slopes.



Inspection Photos

Operator Name: TEP ROCKY MOUNTAIN LLC # 96850

Location ID: 475753



Photo 6: Photo taken from the cut slope on the southwest end of the Location, facing northeast. Photo shows Operator has implemented rock armoring along areas of the cut slope where erosion degradation was previously observed; control measure does not appear to be appropriate in size to stabilize the slopes, and has not been installed with geotextile lining in accordance with good engineering practices. .



Inspection Photos

Operator Name: TEP ROCKY MOUNTAIN LLC # 96850

Location ID: 475753



Photo 7: See comments under photo 6.

Inspection Photos

Operator Name: TEP ROCKY MOUNTAIN LLC # 96850

Location ID: 475753



Photo 8: Continued from photo 6. Photo shows Operator has implemented erosion logs as a run on control measure above the rock armoring; wattles are not an appropriate control measure for areas that receive concentrated flows; runon controls remain missing or insufficient on the Location.



Inspection Photos

Operator Name: TEP ROCKY MOUNTAIN LLC # 96850

Location ID: 475753



20210416

Photo 9: See comments under photo 8.



Inspection Photos

Operator Name: TEP ROCKY MOUNTAIN LLC # 96850

Location ID: 475753



Photo 10: See comments under photo 8. Photo also shows that the erosion logs do not appear to have been properly backfilled to prevent water movement under the control measure.

Inspection Photos
Operator Name: TEP ROCKY MOUNTAIN LLC # 96850
Location ID: 475753



Photo 11: Photo taken from above the cut slope on the west end of the Location. Photo shows example of areas where runon control measures have not been installed; runon control measures remain missing or insufficient on the Location.

Inspection Photos
Operator Name: TEP ROCKY MOUNTAIN LLC # 96850
Location ID: 475753



Photo 12: Photo taken from the cut slope on the west end of the Location. Photo shows area where terrace grading has been installed to address erosion concerns on the cut slope.

Inspection Photos

Operator Name: TEP ROCKY MOUNTAIN LLC # 96850

Location ID: 475753



Photo 13: Continued from photo 12. Photo also shows areas of erosion logs that do not appear to have been properly backfilled to prevent water movement under the control measure.



Inspection Photos

Operator Name: TEP ROCKY MOUNTAIN LLC # 96850

Location ID: 475753



Photo 14: Photo taken from the cut slope on the west end of the Location. Photo shows area where terrace grading has been installed to address erosion concerns on the cut slope. Though hydromulch has been used in conjunction with terracing, soils remain insufficiently stabilized and protected.



Inspection Photos

Operator Name: TEP ROCKY MOUNTAIN LLC # 96850

Location ID: 475753



Photo 15: Photo taken from the cut slope on the west end of the Location. Photo shows Operator has implemented rock armoring on areas that receive concentrated runoff flows. Photo shows control measure has not been installed in accordance with good engineering practices; control measure has not been installed with a geotextile lining; slope protection insufficient.



Inspection Photos

Operator Name: TEP ROCKY MOUNTAIN LLC # 96850

Location ID: 475753



Photo 16: See comments under photo 15.



Inspection Photos

Operator Name: TEP ROCKY MOUNTAIN LLC # 96850

Location ID: 475753



Photo 17: See comments under photo 15.

Inspection Photos

Operator Name: TEP ROCKY MOUNTAIN LLC # 96850

Location ID: 475753



Photo 18: Photo taken from above the cut slope on the west end of the Location. Photo shows example of areas where runon control measures have not been installed; runon control measures remain missing or insufficient on the Location.

Inspection Photos
Operator Name: TEP ROCKY MOUNTAIN LLC # 96850
Location ID: 475753



Photo 19: Photo taken from above the cut slope on the west end of the Location. Photo shows example of areas where runon control measures have not been installed; runon control measures remain missing or insufficient on the Location.

Inspection Photos

Operator Name: TEP ROCKY MOUNTAIN LLC # 96850

Location ID: 475753



Photo 20: Photo shows Operator has installed a berm along the perimeter of the production areas; berm remains improperly constructed per good engineering practices; berm has not been properly compacted; loose soils at berm is considered a pollutant source that will contribute to sediment-laden stormwater discharge.



Inspection Photos

Operator Name: TEP ROCKY MOUNTAIN LLC # 96850

Location ID: 475753



Photo 21: See comments under photo 20.

Inspection Photos

Operator Name: TEP ROCKY MOUNTAIN LLC # 96850

Location ID: 475753



Photo 22: Photo taken from the cut slope on the north end of the Location. Photo shows rill erosion; control measures to stabilize and protect slopes of the Location, and manage runoff remain missing or insufficient.

Inspection Photos

Operator Name: TEP ROCKY MOUNTAIN LLC # 96850

Location ID: 475753



Photo 23: Continued from photo 22. Photo shows sediment deposition due to erosion at the cut slopes.



Inspection Photos

Operator Name: TEP ROCKY MOUNTAIN LLC # 96850

Location ID: 475753



Photo 24: Photo taken from the access road. Photo shows control measures to stabilize/protect slopes remain missing or insufficient.

Inspection Photos

Operator Name: TEP ROCKY MOUNTAIN LLC # 96850

Location ID: 475753



Photo 25: Photo taken from the access road. Photo shows control measures to stabilize/protect slopes remain missing or insufficient.

Inspection Photos
Operator Name: TEP ROCKY MOUNTAIN LLC # 96850
Location ID: 475753



Photo 26: Photo taken from the stream crossing along the access road. Photo shows additional work has been performed at the stream crossing; it is unclear if work conducted will provide long term stabilization to the channel, however, control measures to prevent sediment/pollutant discharge from vehicles and equipment traveling through the intermittent stream and drainage remain missing or insufficient.

Inspection Photos

Operator Name: TEP ROCKY MOUNTAIN LLC # 96850

Location ID: 475753



Photo 27: Photo shows Operator has implemented sediment traps along the access road; control measures have not been installed with a geotextile liner in accordance with good engineering practices.



COLORADO
Oil & Gas Conservation
Commission
Department of Natural Resources

Inspection Photos

Operator Name: TEP ROCKY MOUNTAIN LLC # 96850

Location ID: 475753



Photo 28: Continued from photo 27. Photo shows Operator has implemented sediment traps along the access road; control measures have not been installed with a geotextile liner in accordance with good engineering practices.

Inspection Photos

Operator Name: TEP ROCKY MOUNTAIN LLC # 96850

Location ID: 475753



Photo 29: See comments under photo 27.

Inspection Photos

Operator Name: TEP ROCKY MOUNTAIN LLC # 96850

Location ID: 475753



Photo 30: Photo taken upstream from the road crossing, facing south (downstream).

Inspection Photos
Operator Name: TEP ROCKY MOUNTAIN LLC # 96850
Location ID: 475753



Photo 31: Photo taken downstream from the road crossing, facing north (upstream).

Inspection Photos

Operator Name: TEP ROCKY MOUNTAIN LLC # 96850

Location ID: 475753



Photo 32: Photo taken downstream from the road crossing. Photo shows wattle control measure within channel that has filled with sediment and requires removal.

