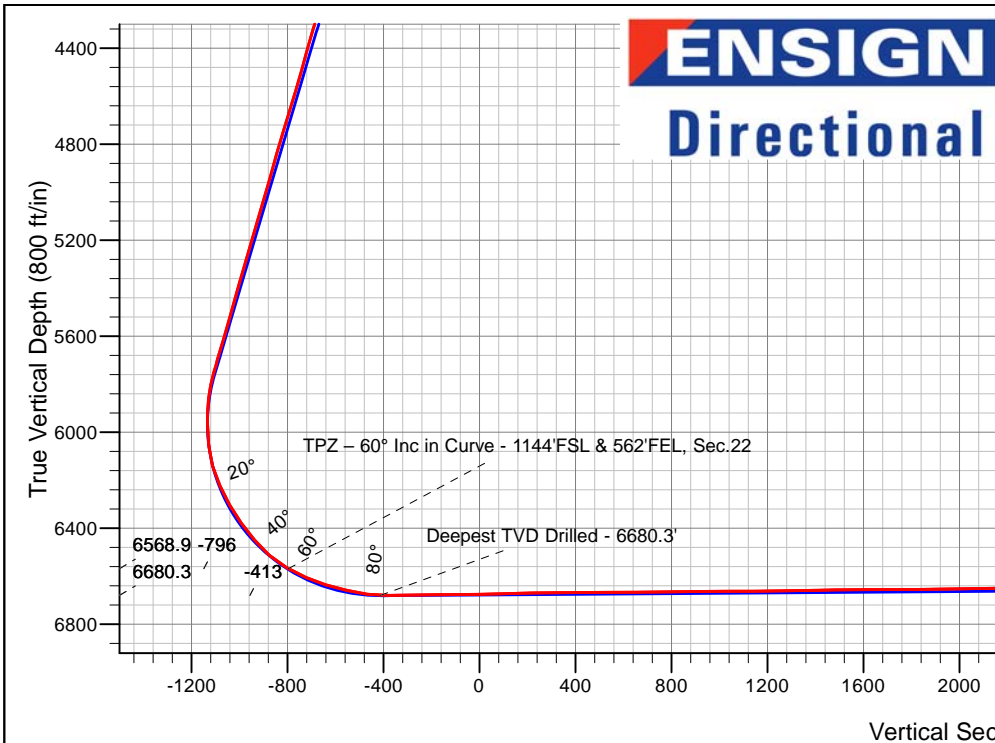
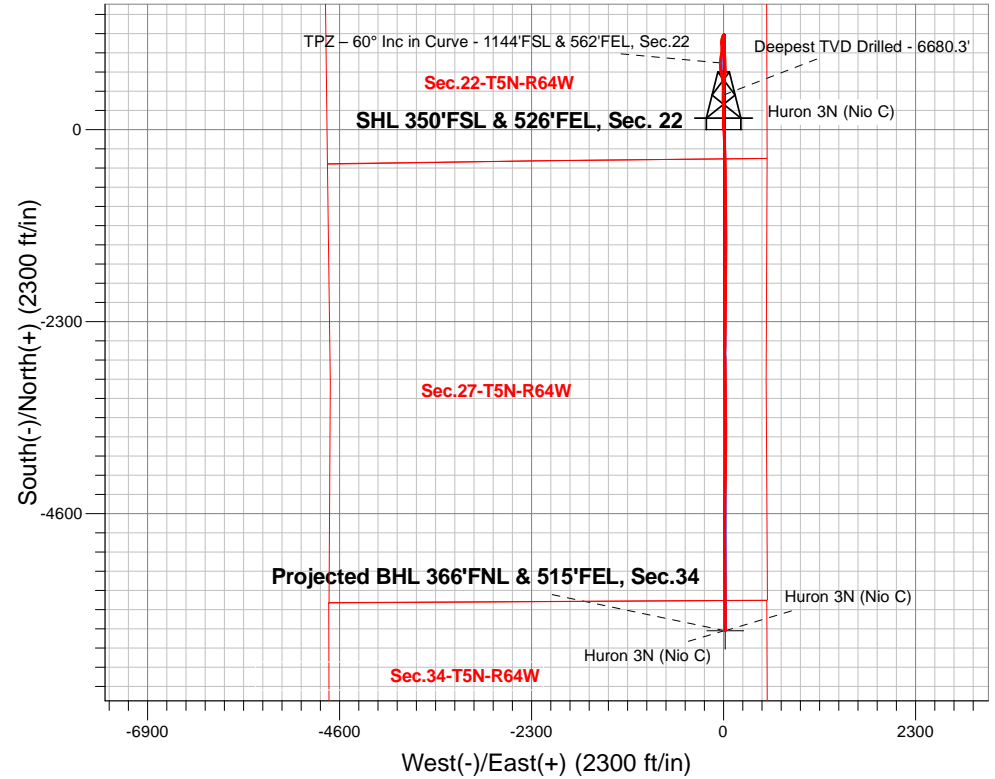


PDC Energy Inc. DJ Basin

Well Name: **Huron 3N (Nio C)**
 Surface Location: Huron 5N64W22 Sec22-T5N-R64W
 North American Datum 1983 , US State Plane 1983, Colorado Northern Zone
 Ground Elevation: 4598.0
 +N/-S +E/-W Northing Easting Latitude Longitude Slot
 0.0 0.0 1382240.51 3270719.75 40.378580 -104.528260
 Ensign 142 RKB - 28' WELL @ 4626.0ft (Ensign 142 RKB - 28')

FINAL SURVEY

Projected Bottom Hole Location
13,642'MD 6639'TVD 6002'S & 19'E of SHL
90.62 degree Inc @ 179.31 degree Azm



Huron 5N64W22 Sec22-T5N-R64W
 Huron 3N (Nio C)
 Huron 3N Wellbore #1
 11:47, March 12 2021

ANNOTATIONS

TVD	MD	Annotation
6568.9	6820.3	TPZ - 60° Inc in Curve - 1144'FSL & 562'FEL, Sec.22
6680.3	7224.9	Deepest TVD Drilled - 6680.3'

LEGEND

- ✖ Huron 3N (Nio C), Huron 3N Wellbore #1, Plan #2 (2-8-21) V0
- ▣ Huron 3N Wellbore #1
- Survey #1

Projected BHL 366'FNL & 515'FEL, Sec.34

Huron 3N (Nio C)
 Huron 3N (Nio C)



PDC Energy Inc. DJ Basin

SEC.22-T5N-R64W

Huron 5N64W22 Sec22-T5N-R64W

Huron 3N (Nio C)

Huron 3N Wellbore #1

Survey: Survey #1

Standard Survey Report

12 March, 2021



Company:	PDC Energy Inc. DJ Basin	Local Co-ordinate Reference:	Well Huron 3N (Nio C)
Project:	SEC.22-T5N-R64W	TVD Reference:	WELL @ 4626.0ft (Ensign 142 RKB - 28')
Site:	Huron 5N64W22 Sec22-T5N-R64W	MD Reference:	WELL @ 4626.0ft (Ensign 142 RKB - 28')
Well:	Huron 3N (Nio C)	North Reference:	True
Wellbore:	Huron 3N Wellbore #1	Survey Calculation Method:	Minimum Curvature
Design:	Huron 3N Wellbore #1	Database:	US_EDM

Project	SEC.22-T5N-R64W, Weld County, Colorado		
Map System:	US State Plane 1983	System Datum:	Mean Sea Level
Geo Datum:	North American Datum 1983		Using Well Reference Point
Map Zone:	Colorado Northern Zone		Using geodetic scale factor

Site	Huron 5N64W22 Sec22-T5N-R64W				
Site Position:		Northing:	1,382,211.17 usft	Latitude:	40.378499
From:	Lat/Long	Easting:	3,270,731.22 usft	Longitude:	-104.528220
Position Uncertainty:	0.0 ft	Slot Radius:	13-3/16 "	Grid Convergence:	0.63 °

Well	Huron 3N (Nio C)					
Well Position	+N/-S	0.0 ft	Northing:	1,382,240.51 usft	Latitude:	40.378580
	+E/-W	0.0 ft	Easting:	3,270,719.75 usft	Longitude:	-104.528260
Position Uncertainty		0.0 ft	Wellhead Elevation:	0.0 ft	Ground Level:	4,598.0 ft

Wellbore	Huron 3N Wellbore #1				
Magnetics	Model Name	Sample Date	Declination (°)	Dip Angle (°)	Field Strength (nT)
	HDGM	02/08/2021	7.73	66.78	51,970

Design	Huron 3N Wellbore #1				
Audit Notes:					
Version:	1.0	Phase:	ACTUAL	Tie On Depth:	0.0
Vertical Section:	Depth From (TVD) (ft)	+N/-S (ft)	+E/-W (ft)	Direction (°)	
	0.0	0.0	0.0	179.81	

Survey Program	Date	03/11/2021			
From (ft)	To (ft)	Survey (Wellbore)	Tool Name	Description	
161.0	13,642.0	Survey #1 (Huron 3N Wellbore #1)	MWD	MWD - Standard	

Measured Depth (ft)	Inclination (°)	Azimuth (°)	Vertical Depth (ft)	+N/-S (ft)	+E/-W (ft)	Vertical Section (ft)	Dogleg Rate (°/100usft)	Build Rate (°/100usft)	Turn Rate (°/100usft)
0.0	0.00	0.00	0.0	0.0	0.0	0.0	0.00	0.00	0.00
161.0	0.30	145.60	161.0	-0.3	0.2	0.3	0.19	0.19	0.00
253.0	0.40	144.70	253.0	-0.8	0.6	0.8	0.11	0.11	-0.98
343.0	0.20	160.30	343.0	-1.2	0.8	1.2	0.24	-0.22	17.33
418.0	0.40	155.90	418.0	-1.6	0.9	1.6	0.27	0.27	-5.87
504.0	0.60	147.90	504.0	-2.2	1.3	2.2	0.25	0.23	-9.30
593.0	0.70	196.10	593.0	-3.1	1.4	3.2	0.61	0.11	54.16
682.0	0.90	357.40	682.0	-3.0	1.2	3.0	1.77	0.22	181.24
772.0	3.30	353.20	771.9	0.3	0.9	-0.3	2.67	2.67	-4.67
858.0	5.60	350.20	857.7	6.9	-0.1	-6.9	2.69	2.67	-3.49

Company:	PDC Energy Inc. DJ Basin	Local Co-ordinate Reference:	Well Huron 3N (Nio C)
Project:	SEC.22-T5N-R64W	TVD Reference:	WELL @ 4626.0ft (Ensign 142 RKB - 28')
Site:	Huron 5N64W22 Sec22-T5N-R64W	MD Reference:	WELL @ 4626.0ft (Ensign 142 RKB - 28')
Well:	Huron 3N (Nio C)	North Reference:	True
Wellbore:	Huron 3N Wellbore #1	Survey Calculation Method:	Minimum Curvature
Design:	Huron 3N Wellbore #1	Database:	US_EDM

Survey										
Measured Depth (ft)	Inclination (°)	Azimuth (°)	Vertical Depth (ft)	+N/-S (ft)	+E/-W (ft)	Vertical Section (ft)	Dogleg Rate (°/100usft)	Build Rate (°/100usft)	Turn Rate (°/100usft)	
948.0	6.10	349.80	947.2	15.9	-1.7	-15.9	0.56	0.56	-0.44	
1,038.0	6.20	349.60	1,036.7	25.4	-3.4	-25.4	0.11	0.11	-0.22	
1,126.0	7.70	356.50	1,124.0	36.0	-4.7	-36.0	1.95	1.70	7.84	
1,215.0	9.80	4.60	1,212.0	49.5	-4.4	-49.5	2.73	2.36	9.10	
1,304.0	11.20	7.90	1,299.5	65.6	-2.6	-65.6	1.71	1.57	3.71	
1,393.0	11.30	5.50	1,386.8	82.8	-0.6	-82.8	0.54	0.11	-2.70	
1,482.0	12.30	0.20	1,473.9	101.0	0.3	-101.0	1.66	1.12	-5.96	
1,572.0	13.30	1.10	1,561.7	120.9	0.5	-120.9	1.13	1.11	1.00	
1,639.0	14.20	359.70	1,626.7	136.9	0.6	-136.9	1.43	1.34	-2.09	
1,701.0	15.27	0.38	1,686.7	152.6	0.6	-152.6	1.75	1.73	1.10	
1,791.0	13.96	358.12	1,773.8	175.3	0.3	-175.3	1.59	-1.46	-2.51	
1,881.0	13.23	0.43	1,861.3	196.5	0.1	-196.5	1.01	-0.81	2.57	
1,971.0	12.31	357.45	1,949.0	216.4	-0.3	-216.4	1.26	-1.02	-3.31	
2,061.0	12.68	355.68	2,036.9	235.8	-1.5	-235.8	0.59	0.41	-1.97	
2,150.0	12.84	359.41	2,123.7	255.4	-2.3	-255.4	0.94	0.18	4.19	
2,240.0	11.87	0.65	2,211.6	274.7	-2.3	-274.7	1.12	-1.08	1.38	
2,329.0	11.36	359.04	2,298.8	292.6	-2.3	-292.6	0.68	-0.57	-1.81	
2,419.0	10.91	359.14	2,387.1	310.0	-2.6	-310.0	0.50	-0.50	0.11	
2,508.0	10.68	0.54	2,474.5	326.6	-2.7	-326.7	0.39	-0.26	1.57	
2,598.0	11.09	356.94	2,562.9	343.6	-3.0	-343.6	0.88	0.46	-4.00	
2,688.0	11.62	356.07	2,651.2	361.3	-4.1	-361.3	0.62	0.59	-0.97	
2,778.0	10.27	359.17	2,739.5	378.4	-4.9	-378.4	1.64	-1.50	3.44	
2,867.0	10.28	356.65	2,827.1	394.2	-5.4	-394.3	0.51	0.01	-2.83	
2,956.0	10.83	2.02	2,914.6	410.5	-5.6	-410.5	1.27	0.62	6.03	
3,045.0	10.28	1.53	3,002.1	426.8	-5.1	-426.8	0.63	-0.62	-0.55	
3,135.0	9.70	2.64	3,090.7	442.4	-4.5	-442.4	0.68	-0.64	1.23	
3,224.0	9.63	4.28	3,178.5	457.3	-3.6	-457.3	0.32	-0.08	1.84	
3,315.0	9.99	2.31	3,268.1	472.8	-2.8	-472.8	0.54	0.40	-2.16	
3,404.0	10.10	7.06	3,355.8	488.3	-1.5	-488.3	0.94	0.12	5.34	
3,494.0	9.79	4.98	3,444.4	503.7	0.2	-503.7	0.53	-0.34	-2.31	
3,584.0	10.48	0.21	3,533.0	519.5	0.8	-519.5	1.21	0.77	-5.30	
3,674.0	11.47	5.83	3,621.4	536.6	1.8	-536.6	1.62	1.10	6.24	
3,764.0	11.22	5.77	3,709.6	554.2	3.6	-554.2	0.28	-0.28	-0.07	
3,853.0	9.72	6.08	3,797.1	570.3	5.2	-570.3	1.69	-1.69	0.35	
3,943.0	9.81	4.10	3,885.8	585.5	6.6	-585.5	0.39	0.10	-2.20	
4,033.0	10.25	5.51	3,974.4	601.1	7.9	-601.1	0.56	0.49	1.57	
4,123.0	13.69	13.16	4,062.5	619.5	11.1	-619.4	4.20	3.82	8.50	
4,212.0	15.68	2.80	4,148.6	641.8	14.1	-641.7	3.69	2.24	-11.64	
4,301.0	17.55	6.55	4,233.9	667.1	16.2	-667.1	2.42	2.10	4.21	
4,392.0	16.22	2.01	4,320.9	693.4	18.2	-693.4	2.06	-1.46	-4.99	
4,481.0	15.47	356.60	4,406.6	717.7	18.0	-717.7	1.86	-0.84	-6.08	
4,571.0	15.29	355.69	4,493.3	741.5	16.3	-741.5	0.33	-0.20	-1.01	
4,661.0	17.09	358.95	4,579.8	766.6	15.2	-766.5	2.24	2.00	3.62	
4,750.0	16.84	357.79	4,664.9	792.5	14.5	-792.5	0.47	-0.28	-1.30	

Company:	PDC Energy Inc. DJ Basin	Local Co-ordinate Reference:	Well Huron 3N (Nio C)
Project:	SEC.22-T5N-R64W	TVD Reference:	WELL @ 4626.0ft (Ensign 142 RKB - 28')
Site:	Huron 5N64W22 Sec22-T5N-R64W	MD Reference:	WELL @ 4626.0ft (Ensign 142 RKB - 28')
Well:	Huron 3N (Nio C)	North Reference:	True
Wellbore:	Huron 3N Wellbore #1	Survey Calculation Method:	Minimum Curvature
Design:	Huron 3N Wellbore #1	Database:	US_EDM

Survey										
Measured Depth (ft)	Inclination (°)	Azimuth (°)	Vertical Depth (ft)	+N/-S (ft)	+E/-W (ft)	Vertical Section (ft)	Dogleg Rate (°/100usft)	Build Rate (°/100usft)	Turn Rate (°/100usft)	
4,840.0	16.87	3.11	4,751.0	818.6	14.7	-818.6	1.71	0.03	5.91	
4,929.0	15.60	356.92	4,836.5	843.5	14.7	-843.4	2.41	-1.43	-6.96	
5,019.0	15.73	354.19	4,923.1	867.7	12.9	-867.6	0.83	0.14	-3.03	
5,108.0	16.87	359.08	5,008.6	892.6	11.4	-892.6	2.00	1.28	5.49	
5,198.0	15.73	3.84	5,095.0	917.8	12.0	-917.8	1.95	-1.27	5.29	
5,288.0	16.32	356.16	5,181.5	942.6	12.0	-942.6	2.44	0.66	-8.53	
5,378.0	16.37	355.93	5,267.8	967.9	10.3	-967.9	0.09	0.06	-0.26	
5,467.0	16.35	4.19	5,353.2	992.9	10.3	-992.9	2.61	-0.02	9.28	
5,556.0	15.42	0.57	5,438.8	1,017.2	11.3	-1,017.2	1.53	-1.04	-4.07	
5,646.0	15.61	356.32	5,525.6	1,041.3	10.7	-1,041.2	1.28	0.21	-4.72	
5,735.0	16.51	357.34	5,611.1	1,065.9	9.3	-1,065.8	1.06	1.01	1.15	
5,825.0	16.51	6.10	5,697.4	1,091.4	10.1	-1,091.3	2.76	0.00	9.73	
5,915.0	14.39	357.37	5,784.1	1,115.2	10.9	-1,115.2	3.49	-2.36	-9.70	
6,005.0	6.28	312.39	5,872.7	1,129.8	6.8	-1,129.8	12.08	-9.01	-49.98	
6,095.0	0.21	91.82	5,962.6	1,133.1	3.3	-1,133.1	7.16	-6.74	154.92	
6,185.0	7.90	223.90	6,052.3	1,128.6	-0.9	-1,128.6	8.94	8.54	146.76	
6,275.0	17.31	205.64	6,140.0	1,112.1	-11.0	-1,112.1	11.23	10.46	-20.29	
6,365.0	25.01	191.90	6,224.0	1,081.3	-20.7	-1,081.4	10.12	8.56	-15.27	
6,455.0	29.32	178.91	6,304.1	1,040.6	-24.2	-1,040.7	8.12	4.79	-14.43	
6,544.0	36.20	173.56	6,378.9	992.6	-20.8	-992.7	8.38	7.73	-6.01	
6,634.0	40.05	184.56	6,449.8	937.3	-20.2	-937.3	8.66	4.28	12.22	
6,723.0	49.49	190.35	6,512.9	875.3	-28.5	-875.4	11.55	10.61	6.51	
6,812.0	59.35	182.94	6,564.7	803.5	-36.6	-803.6	12.97	11.08	-8.33	
6,820.3	59.97	182.03	6,568.9	796.4	-36.9	-796.5	12.09	7.51	-10.97	
TPZ - 60° Inc in Curve - 1144'FSL & 562'FEL, Sec.22										
6,903.0	66.49	173.53	6,606.1	722.7	-33.9	-722.8	12.09	7.88	-10.28	
6,992.0	73.58	168.57	6,636.5	640.2	-20.8	-640.3	9.53	7.97	-5.57	
7,082.0	77.47	172.50	6,659.0	554.3	-6.5	-554.3	6.05	4.32	4.37	
7,171.0	81.47	179.56	6,675.3	467.0	-0.5	-467.0	9.00	4.49	7.93	
7,224.9	87.81	180.23	6,680.3	413.4	-0.4	-413.4	11.82	11.76	1.24	
Deepest TVD Drilled - 6680.3'										
7,261.0	92.05	180.67	6,680.4	377.3	-0.7	-377.3	11.82	11.76	1.23	
7,350.0	90.46	178.24	6,678.4	288.4	0.2	-288.4	3.26	-1.79	-2.73	
7,440.0	90.24	180.65	6,677.9	198.4	1.0	-198.4	2.69	-0.24	2.68	
7,529.0	90.25	176.99	6,677.5	109.4	2.9	-109.4	4.11	0.01	-4.11	
7,618.0	91.53	178.66	6,676.1	20.5	6.2	-20.5	2.36	1.44	1.88	
7,707.0	90.89	177.84	6,674.3	-68.5	9.0	68.5	1.17	-0.72	-0.92	
7,796.0	91.47	179.22	6,672.4	-157.4	11.2	157.4	1.68	0.65	1.55	
7,886.0	91.16	178.83	6,670.4	-247.4	12.8	247.4	0.55	-0.34	-0.43	
7,976.0	90.07	178.89	6,669.4	-337.3	14.6	337.4	1.21	-1.21	0.07	
8,066.0	91.03	178.51	6,668.5	-427.3	16.6	427.4	1.15	1.07	-0.42	
8,156.0	90.40	179.27	6,667.4	-517.3	18.3	517.3	1.10	-0.70	0.84	
8,245.0	90.43	179.69	6,666.8	-606.3	19.2	606.3	0.47	0.03	0.47	

Company:	PDC Energy Inc. DJ Basin	Local Co-ordinate Reference:	Well Huron 3N (Nio C)
Project:	SEC.22-T5N-R64W	TVD Reference:	WELL @ 4626.0ft (Ensign 142 RKB - 28')
Site:	Huron 5N64W22 Sec22-T5N-R64W	MD Reference:	WELL @ 4626.0ft (Ensign 142 RKB - 28')
Well:	Huron 3N (Nio C)	North Reference:	True
Wellbore:	Huron 3N Wellbore #1	Survey Calculation Method:	Minimum Curvature
Design:	Huron 3N Wellbore #1	Database:	US_EDM

Survey										
Measured Depth (ft)	Inclination (°)	Azimuth (°)	Vertical Depth (ft)	+N/-S (ft)	+E/-W (ft)	Vertical Section (ft)	Dogleg Rate (°/100usft)	Build Rate (°/100usft)	Turn Rate (°/100usft)	
8,335.0	90.02	178.63	6,666.4	-696.3	20.5	696.3	1.26	-0.46	-1.18	
8,424.0	90.60	179.62	6,665.9	-785.3	21.8	785.3	1.29	0.65	1.11	
8,513.0	91.08	180.31	6,664.6	-874.3	21.9	874.3	0.94	0.54	0.78	
8,603.0	90.61	179.43	6,663.3	-964.2	22.1	964.3	1.11	-0.52	-0.98	
8,692.0	90.26	178.03	6,662.6	-1,053.2	24.1	1,053.3	1.62	-0.39	-1.57	
8,782.0	89.98	179.48	6,662.4	-1,143.2	26.0	1,143.3	1.64	-0.31	1.61	
8,872.0	90.72	178.97	6,661.9	-1,233.2	27.2	1,233.3	1.00	0.82	-0.57	
8,961.0	90.87	181.09	6,660.6	-1,322.2	27.2	1,322.2	2.39	0.17	2.38	
9,051.0	91.08	180.77	6,659.1	-1,412.1	25.7	1,412.2	0.43	0.23	-0.36	
9,141.0	90.64	179.63	6,657.8	-1,502.1	25.4	1,502.2	1.36	-0.49	-1.27	
9,231.0	90.88	180.00	6,656.6	-1,592.1	25.7	1,592.2	0.49	0.27	0.41	
9,320.0	89.95	181.34	6,655.9	-1,681.1	24.7	1,681.2	1.83	-1.04	1.51	
9,410.0	89.98	180.74	6,656.0	-1,771.1	23.0	1,771.2	0.67	0.03	-0.67	
9,500.0	90.66	179.67	6,655.5	-1,861.1	22.7	1,861.2	1.41	0.76	-1.19	
9,590.0	91.20	180.66	6,654.0	-1,951.1	22.4	1,951.1	1.25	0.60	1.10	
9,680.0	90.98	180.21	6,652.3	-2,041.1	21.8	2,041.1	0.56	-0.24	-0.50	
9,770.0	91.40	180.05	6,650.4	-2,131.0	21.6	2,131.1	0.50	0.47	-0.18	
9,859.0	90.12	180.39	6,649.2	-2,220.0	21.2	2,220.1	1.49	-1.44	0.38	
9,949.0	89.57	182.20	6,649.5	-2,310.0	19.2	2,310.0	2.10	-0.61	2.01	
10,039.0	90.66	180.78	6,649.3	-2,400.0	16.8	2,400.0	1.99	1.21	-1.58	
10,129.0	90.97	181.41	6,648.0	-2,489.9	15.1	2,490.0	0.78	0.34	0.70	
10,219.0	90.45	180.50	6,646.9	-2,579.9	13.6	2,579.9	1.16	-0.58	-1.01	
10,309.0	90.47	179.80	6,646.2	-2,669.9	13.4	2,669.9	0.78	0.02	-0.78	
10,398.0	90.90	179.12	6,645.1	-2,758.9	14.2	2,758.9	0.90	0.48	-0.76	
10,488.0	90.49	179.40	6,644.0	-2,848.9	15.4	2,848.9	0.55	-0.46	0.31	
10,578.0	89.81	179.80	6,643.8	-2,938.9	16.0	2,938.9	0.88	-0.76	0.44	
10,668.0	89.39	178.03	6,644.4	-3,028.9	17.7	3,028.9	2.02	-0.47	-1.97	
10,757.0	89.16	177.79	6,645.6	-3,117.8	21.0	3,117.8	0.37	-0.26	-0.27	
10,847.0	90.11	179.13	6,646.1	-3,207.8	23.4	3,207.8	1.83	1.06	1.49	
10,936.0	89.94	179.98	6,646.1	-3,296.8	24.1	3,296.8	0.97	-0.19	0.96	
11,025.0	90.10	181.13	6,646.1	-3,385.7	23.2	3,385.8	1.30	0.18	1.29	
11,115.0	89.63	177.79	6,646.3	-3,475.7	24.1	3,475.8	3.75	-0.52	-3.71	
11,205.0	90.17	180.11	6,646.4	-3,565.7	25.7	3,565.8	2.65	0.60	2.58	
11,294.0	90.59	180.07	6,645.8	-3,654.7	25.6	3,654.8	0.47	0.47	-0.04	
11,384.0	90.34	181.35	6,645.1	-3,744.7	24.5	3,744.8	1.45	-0.28	1.42	
11,474.0	90.71	180.42	6,644.3	-3,834.7	23.1	3,834.7	1.11	0.41	-1.03	
11,564.0	90.50	179.89	6,643.3	-3,924.7	22.8	3,924.7	0.63	-0.23	-0.59	
11,653.0	90.04	180.62	6,642.9	-4,013.7	22.4	4,013.7	0.97	-0.52	0.82	
11,743.0	90.07	181.13	6,642.8	-4,103.7	21.1	4,103.7	0.57	0.03	0.57	
11,833.0	88.95	180.48	6,643.6	-4,193.6	19.8	4,193.7	1.44	-1.24	-0.72	
11,923.0	90.07	182.62	6,644.4	-4,283.6	17.4	4,283.6	2.68	1.24	2.38	
12,013.0	89.83	178.83	6,644.4	-4,373.6	16.2	4,373.6	4.22	-0.27	-4.21	
12,102.0	90.46	182.23	6,644.2	-4,462.6	15.4	4,462.6	3.89	0.71	3.82	
12,191.0	90.10	181.77	6,643.8	-4,551.5	12.3	4,551.5	0.66	-0.40	-0.52	

Company:	PDC Energy Inc. DJ Basin	Local Co-ordinate Reference:	Well Huron 3N (Nio C)
Project:	SEC.22-T5N-R64W	TVD Reference:	WELL @ 4626.0ft (Ensign 142 RKB - 28')
Site:	Huron 5N64W22 Sec22-T5N-R64W	MD Reference:	WELL @ 4626.0ft (Ensign 142 RKB - 28')
Well:	Huron 3N (Nio C)	North Reference:	True
Wellbore:	Huron 3N Wellbore #1	Survey Calculation Method:	Minimum Curvature
Design:	Huron 3N Wellbore #1	Database:	US_EDM

Measured Depth (ft)	Inclination (°)	Azimuth (°)	Vertical Depth (ft)	+N/-S (ft)	+E/-W (ft)	Vertical Section (ft)	Dogleg Rate (°/100usft)	Build Rate (°/100usft)	Turn Rate (°/100usft)
12,281.0	89.44	179.02	6,644.1	-4,641.5	11.7	4,641.5	3.14	-0.73	-3.06
12,371.0	89.20	181.03	6,645.2	-4,731.5	11.6	4,731.5	2.25	-0.27	2.23
12,460.0	89.84	179.41	6,646.0	-4,820.5	11.3	4,820.5	1.96	0.72	-1.82
12,550.0	90.97	180.17	6,645.3	-4,910.5	11.6	4,910.5	1.51	1.26	0.84
12,639.0	89.96	177.78	6,644.6	-4,999.4	13.2	4,999.5	2.92	-1.13	-2.69
12,728.0	90.28	181.62	6,644.4	-5,088.4	13.7	5,088.4	4.33	0.36	4.31
12,818.0	90.71	179.48	6,643.6	-5,178.4	12.8	5,178.4	2.43	0.48	-2.38
12,907.0	89.92	179.37	6,643.1	-5,267.4	13.7	5,267.4	0.90	-0.89	-0.12
12,997.0	90.39	179.19	6,642.9	-5,357.4	14.8	5,357.4	0.56	0.52	-0.20
13,086.0	90.48	179.47	6,642.2	-5,446.4	15.9	5,446.4	0.33	0.10	0.31
13,176.0	90.27	180.06	6,641.6	-5,536.4	16.2	5,536.4	0.70	-0.23	0.66
13,266.0	90.22	180.33	6,641.3	-5,626.4	15.9	5,626.4	0.31	-0.06	0.30
13,355.0	90.55	179.39	6,640.7	-5,715.4	16.2	5,715.4	1.12	0.37	-1.06
13,444.0	89.92	178.80	6,640.3	-5,804.4	17.6	5,804.4	0.97	-0.71	-0.66
13,534.0	90.19	180.37	6,640.2	-5,894.4	18.2	5,894.4	1.77	0.30	1.74
13,620.0	90.62	179.31	6,639.6	-5,980.4	18.5	5,980.4	1.33	0.50	-1.23
13,642.0	90.62	179.31	6,639.4	-6,002.4	18.7	6,002.4	0.00	0.00	0.00

Target Name	Dip Angle (°)	Dip Dir. (°)	TVD (ft)	+N/-S (ft)	+E/-W (ft)	Northing (usft)	Easting (usft)	Latitude	Longitude
SHL 350'FSL & 526'FEL - survey hits target center - Point	0.00	0.00	1.0	0.0	0.0	1,382,240.52	3,270,719.75	40.378580	-104.528260
BHL 367'FNL & 514'FEL - survey misses target center by 3.7ft at 13642.0ft MD (6639.4 TVD, -6002.4 N, 18.7 E) - Point	0.00	0.00	6,636.0	-6,003.8	19.5	1,376,237.52	3,270,805.04	40.362100	-104.528190

Measured Depth (ft)	Vertical Depth (ft)	Local Coordinates +N/-S (ft)	+E/-W (ft)	Comment
6,820.3	6,568.9	796.4	-36.9	TPZ – 60° Inc in Curve - 1144'FSL & 562'FEL, Sec.22
7,224.9	6,680.3	413.4	-0.4	Deepest TVD Drilled - 6680.3'

Checked By: _____ Approved By: _____ Date: _____