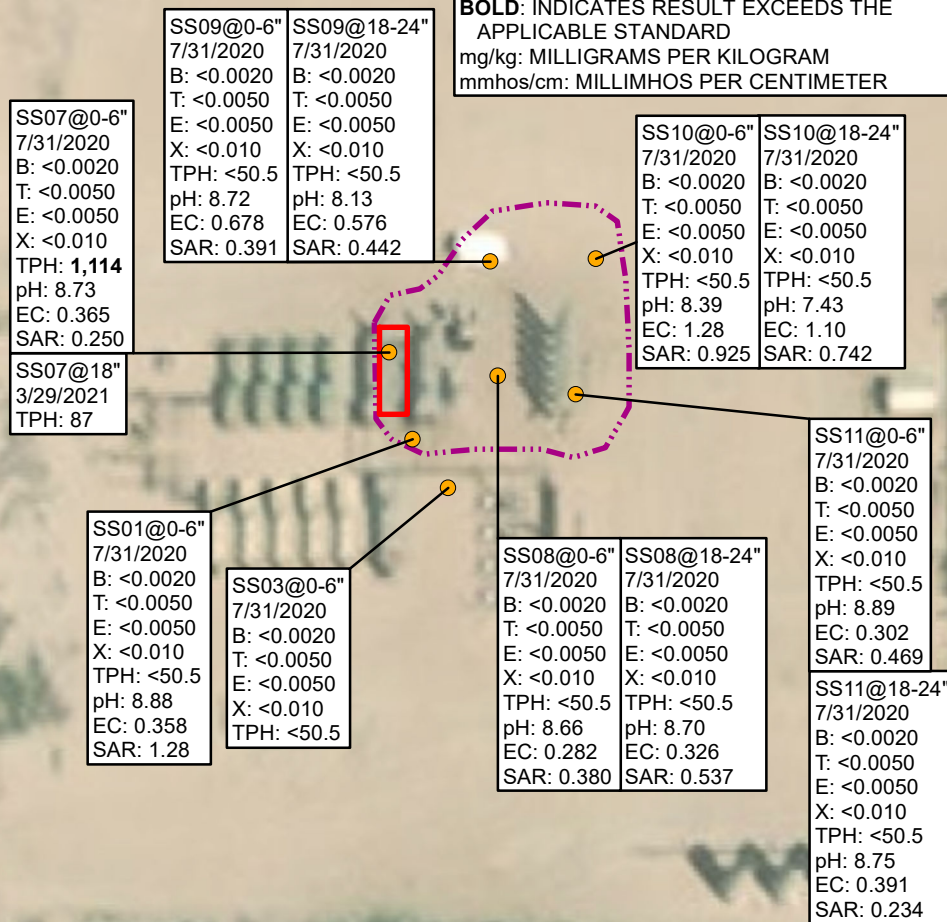


SAMPLE ID @ DEPTH BELOW SURFACE
 SAMPLE DATE
 B: BENZENE (mg/kg)
 T: TOLUENE (mg/kg)
 E: ETHYLBENZENE (mg/kg)
 X: TOTAL XYLENES (mg/kg)
 TPH: TOTAL PETROLEUM HYDROCARBONS (mg/kg)
 pH: SCIENTIFIC UNITS
 EC: ELECTRICAL CONDUCTIVITY (mmhos/cm)
 SAR: SODIUM ADSORPTION RATIO (UNITLESS)
 <: INDICATES RESULT IS LESS THAN THE LABORATORY REPORTING LIMIT
BOLD: INDICATES RESULT EXCEEDS THE APPLICABLE STANDARD
 mg/kg: MILLIGRAMS PER KILOGRAM
 mmhos/cm: MILLIMHOS PER CENTIMETER



LEGEND

- SOIL SAMPLE
- APPROXIMATE RELEASE EXTENT
- HYDROVAC/SCRAPED AREA

IMAGE COURTESY OF ESRI

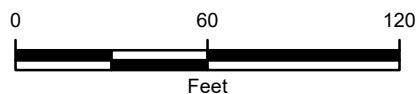


FIGURE 2
 SOIL ANALYTICAL RESULTS
 AEF 4-62-28 NWNW SPILL ID 477390
 NWNW SEC 28-T4N-R62W
 WELD COUNTY, COLORADO
 HIGHPOINT RESOURCES

