

40 12872, -108 20042, 6054.0ft, 59°
04/14/2021 04:27:48 PM



COLORADO
Oil & Gas Conservation
Commission
Department of Natural Resources

Photo 1. Well.

Ant Hill Unit 19-24

API: 05-103-10219

Inspection: 701500338



COLORADO
Oil & Gas Conservation
Commission
Department of Natural Resources

Photo 2. Meter building & tanks.

Ant Hill Unit 19-24

API: 05-103-10219

Inspection: 701500338



40.12841, -108.20036, 6046.8ft, 95°
04/14/2021 04:27:04 PM





40.12858, -108.20001, 6045.8ft, 16°
04/14/2021 04:33:00 PM



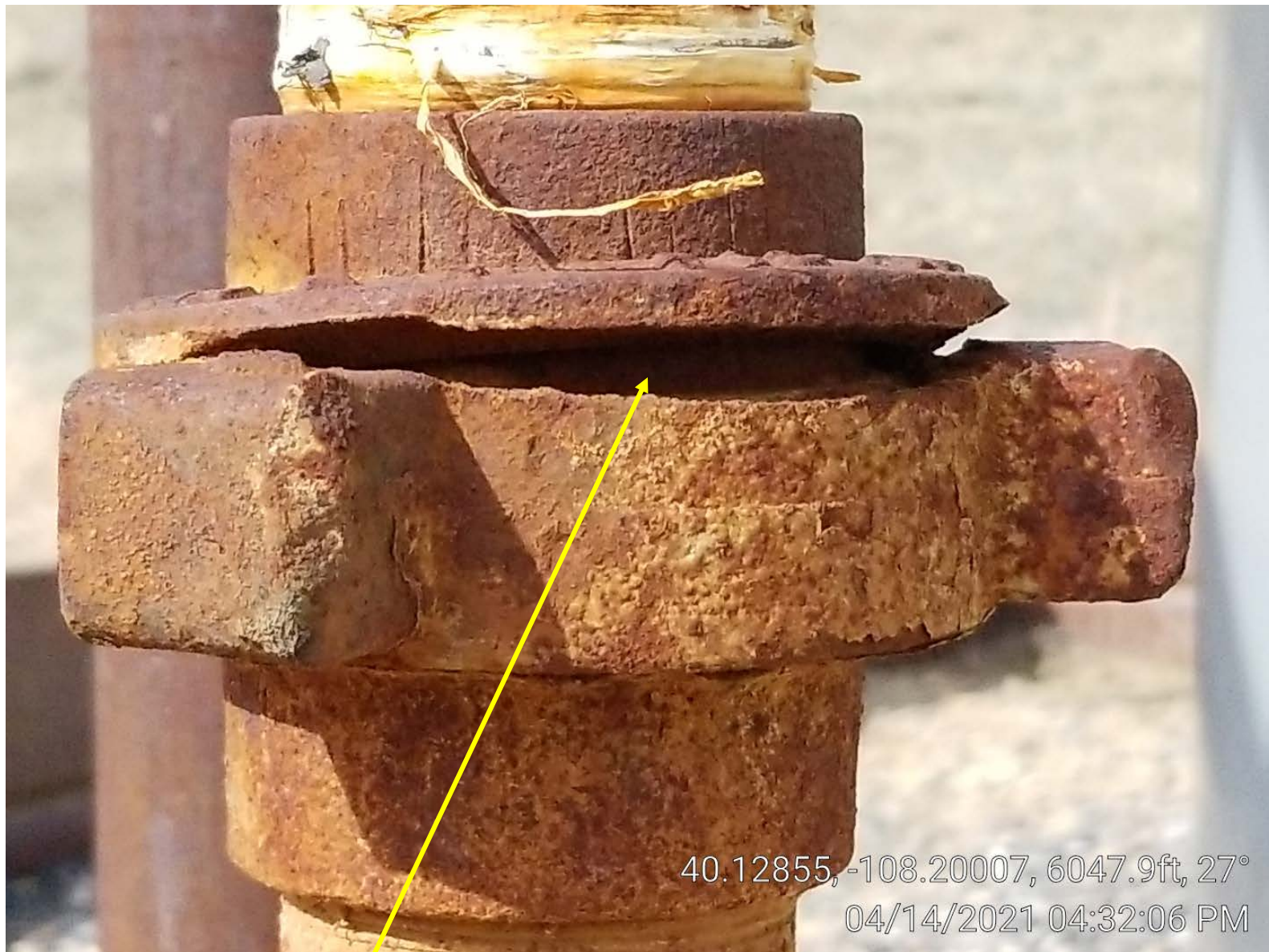
COLORADO
Oil & Gas Conservation
Commission
Department of Natural Resources

Photo 5. Cracked joint.

Ant Hill Unit 19-24

API: 05-103-10219

Inspection: 701500338



40.12855, -108.20007, 6047.9ft, 27°
04/14/2021 04:32:06 PM



40.1284, -108.20031, 6046.4ft, 131°
04/14/2021 04:26:35 PM



31 OPERATING

ANT HILL UNIT #19-24
SE NE SEC. 19-T2N-R96W
RIO BLANCO COUNTY, CO
#C-0127535

IN CASE OF EMERGENCY CALL
EMERGENCY NUMBER : 800-209-9762

COUNTY ROAD 142

Lat: 40.12872 Long: 108.20016

40.12837, -108.20016, 6038.6ft, 24°

04/14/2021 04:24:38 PM