



Mr. Phillip Porter
PDC Energy Inc.
4000 Burlington Avenue
Evans, Colorado 80620

December 10, 2020

RE: Vegetation Assessment Report (Final Reclamation Completion Notice)
COGCC Location Information: MOSSBERG PMJ-65N66W /30NWSE (Location I.D. 326979)
Operator Location Information: MOSSBERG PMJ 30-10 Well (API # 05-123-13965)
PDC Energy Inc. (Operator: 69175)

Dear Mr. Porter:

Apex Companies, LLC (Apex) is presenting this letter to PDC Energy Inc. (PDC) documenting the results of a vegetation assessment that demonstrates successful completion of final reclamation efforts, per Colorado Oil & Gas Conservation Commission (COGCC) Rule 1004, on the above-referenced location. Attached is a topographic location map and a vegetation survey site map with additional location information.

Site visits, project correspondence and documentation, and the completed vegetation assessment confirmed that the location has been final reclaimed and returned by the landowner to cropland and agricultural use, with no evidence of unrestored subsidence over two growing seasons. Based on the results of the survey, final reclamation, as defined by COGCC rules and regulations, has been achieved. Photographs exhibiting current site conditions are attached, along with the site map that illustrates the photo points.

On July 21, 2020, the site was visited and photographs documenting crop establishment throughout the location were taken, along with reference area crops.

Apex appreciates the opportunity to provide environmental consulting services on this project. Should you have any questions or require additional information, please do not hesitate to contact me.

Sincerely,

Apex Companies, LLC

A handwritten signature in cursive script, appearing to read 'Carolyn Craveiro de Sá'.

Carolyn Craveiro de Sá
Environmental Scientist
720-537-5478

Carolyn.CraveirodeSa@apexcos.com

Attachments:

1. Topographic Location Map
2. Vegetation Survey Site Map
3. Vegetation Assessment Photo Log

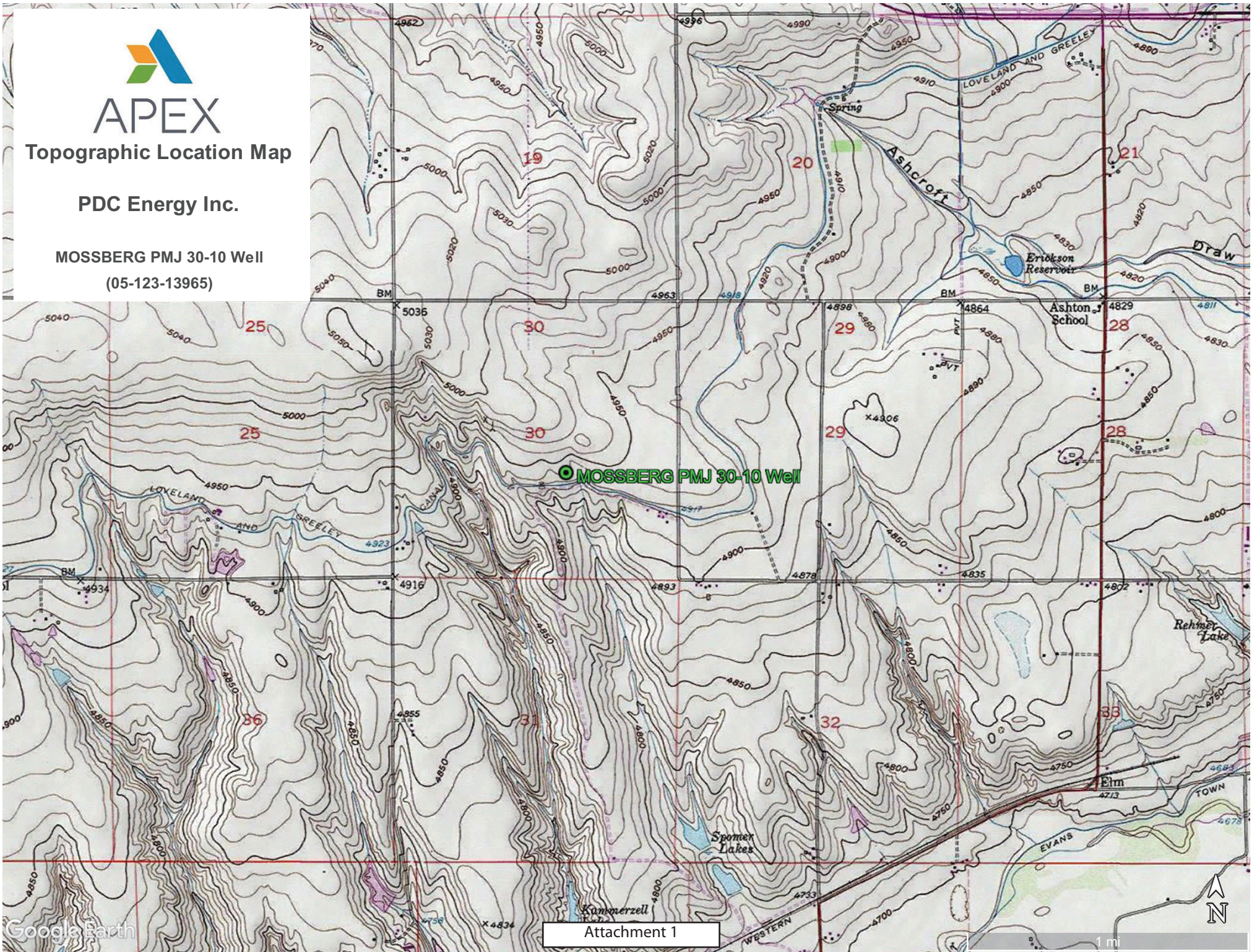


APEX

Topographic Location Map

PDC Energy Inc.

MOSSBERG PMJ 30-10 Well
(05-123-13965)







APEX

Vegetation Survey Site Map

PDC Energy Inc.

MOSSBERG PMJ 30-10 Well
(05-123-13965)

	Vegetation Photo Point
	Directional Photos

Legal Description: NWSE, Sec.30, T5N-R66W
 Lat/Long: 40.368791/-104.820291
 County: Weld
 Land Use: Crop Land
 Inspector: D. Hitchings
 Assessment Date: 07/21/2020
 Aerial Imagery Date: 09/07/2016

**Please reference coordinate disclaimer on the photo log pages.*



Vegetation Assessment Photo Log

Date Completed - 07/21/2020

Client - PDC Energy Inc.

Operator Location Information (API) - **MOSSBERG PMJ 30-10 Well (05-123-13965)**



Photo Point A: North of Disturbance - Facing South



Photo Point B: South of Disturbance - Facing North



Photo Point C: West of Disturbance - Facing East



Photo Point D: East of Disturbance - Facing West

*Geographic coordinates provided in the borders of all attached photos are based on points identified by the mobile phone or tablet which collected the photo. Coordinate accuracy in this format is typically no greater than 5 meters, while the points illustrated in the site diagram associated with this submittal were collected with a high accuracy GPS unit with sub-meter accuracy. Discrepancies between the site diagram and photo coordinates will exist.

Vegetation Assessment Photo Log

Client - **PDC Energy Inc.**

Date Completed - 07/21/2020

Operator Location Information (API) - **MOSSBERG PMJ 30-10 Well (05-123-13965)**



Photo Point E: Reference Crop Vegetation - Facing South