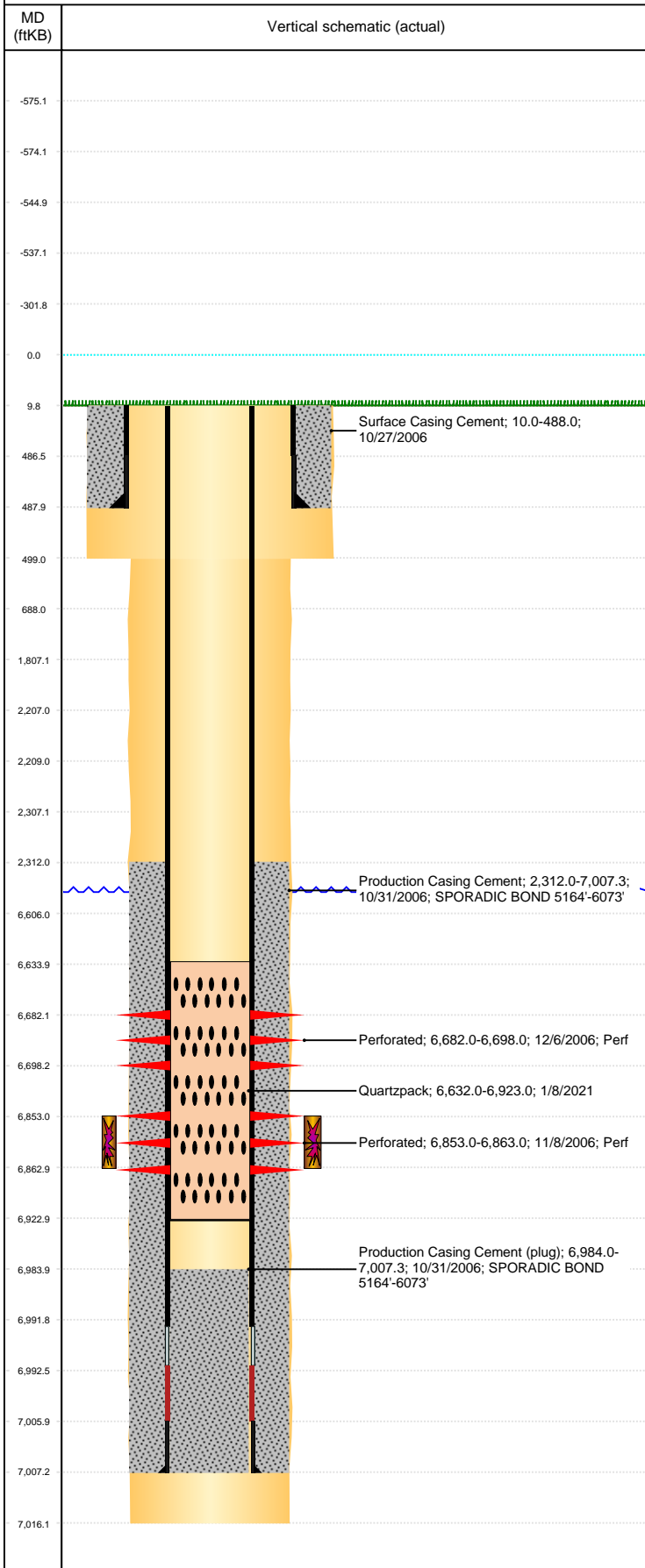


Well Name: HAGEMEISTER USX AA07-04

VERTICAL, ORIGINAL HOLE, 4/15/2021 10:29:54 AM



Well Header									
API 05-123-24298		Business Unit DJ BASIN			District 15		Well Config VERTICAL		
KB - GL / MSL (ft... 10.00		Spud Date 10/27/2006		P & A Date		Well Production Status TA		SoRT Yes	
Comment TD DISCREPANCY: DRL RPTS=6995' & 7016', ST CMP=7016'									
Surface Location (Congressional)									
Qtr 3 NW	Qtr 4 NW	Section 7	Twnshp 6	Twnsh.... N	Range 63	Rng E/... W	Actual Latitude (°) 40.50651708	Actual Longitude (°) -104.48677515	
Wellbore Sections									
Section Des			Size (in)		Act Top, MD (ftKB)		Act Btm, MD (ftKB)		
SURFACE			12 1/4		10		499		
PRODUCTION			7 7/8		499		7,016		
Casing Strings									
Csg Des			Run Date		OD (in)	Wt/Len (lb/ft)	Grade	Top, MD (ftKB)	MD (ftKB)
Surface			10/27/2006		8 5/8	24.00	J-55	10.0	488.0
Production			10/31/2006		4 1/2	11.60	M-80	10.0	7,007.3
Cement									
Des					Start Date		Top (ftKB)		Btm (ftKB)
Surface Casing Cement					10/27/2006		10.0		488.0
Production Casing Cement					10/31/2006		2,312.0		7,007.3
Zone Statuses									
Zone Name	Status Date	Status	Fluid Type	Job				Prod Method	
CODELL	12/8/2006	PR		DRILLING/COMPLETION - ORIGINAL, 10/27/200...					
CODELL	1/8/2021	TA		SET PLUG, 1/7/2021 07:00					
NIOBRARA	12/8/2006	PR		DRILLING/COMPLETION - ORIGINAL, 10/27/200...					
NIOBRARA	1/8/2021	TA		SET PLUG, 1/7/2021 07:00					
Perforation Data									
Linked Zone			Bnch/Stg	Entered Shot Total	Top (ftKB)		Btm (ftKB)		Date
NIOBRARA, ORIGINAL HOLE				96	6,682.00		6,698.00		12/6/2006
CODELL, ORIGINAL HOLE				40	6,853.00		6,863.00		11/8/2006
Stimulation Intervals									
Zone				Start Date		Top (ftKB)		Btm (ftKB)	
CODELL, ORIGINAL HOLE				12/6/2006		6,853.0		6,863.0	
Other In Hole									
Run Date		Des			Make		OD (in)	Top (ftKB)	Btm (ftKB)
Logs									
Date		Type				Top, MD (ftKB)		Btm, MD (ftKB)	
10/31/2006		COMPENSATED DENSITY				2,660.0		6,996.0	
10/31/2006		INDUCTION				490.0		7,016.0	
11/7/2006		CBL/CCL/GR				2,191.0		6,982.0	
2/17/2015		GYRO				10.0		6,750.0	
Plug Back Total Depths									
Date		Type			Com				Depth (ftKB)
11/7/2006		FILL			DEPTH LOGGER ON CBL				6,984.0
1/17/2007		PLUG REMNANTS			DRILL PLUG AND CLEAN OUT				6,923.0