



Cub Creek Energy, LLC

SEC.30-T3N-R68W

Knight Pad SEC.30-3N-68W

Knight 6

Wellbore #1 Knight 6

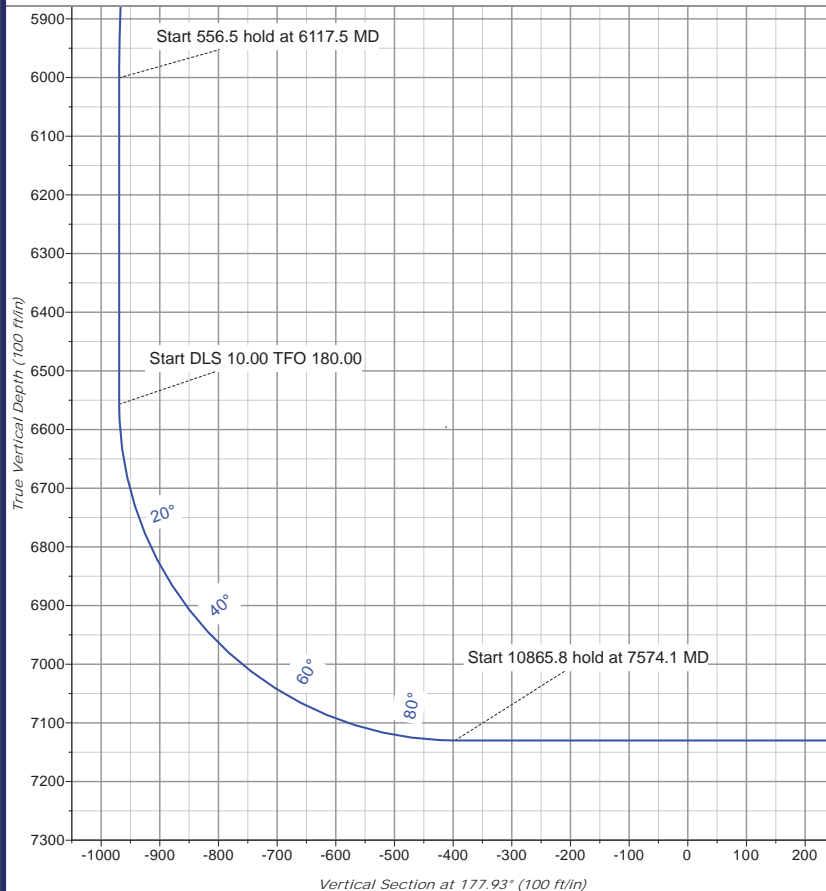
Plan: Plan 2 (4.9.21)

Standard Planning Report

12 April, 2021

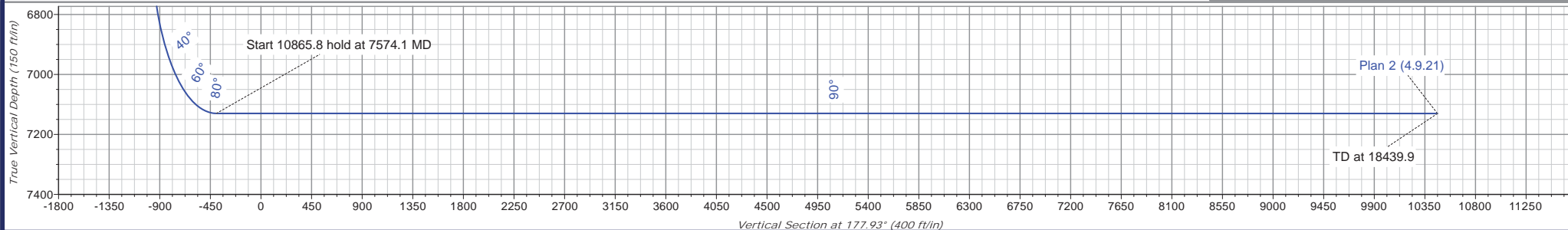
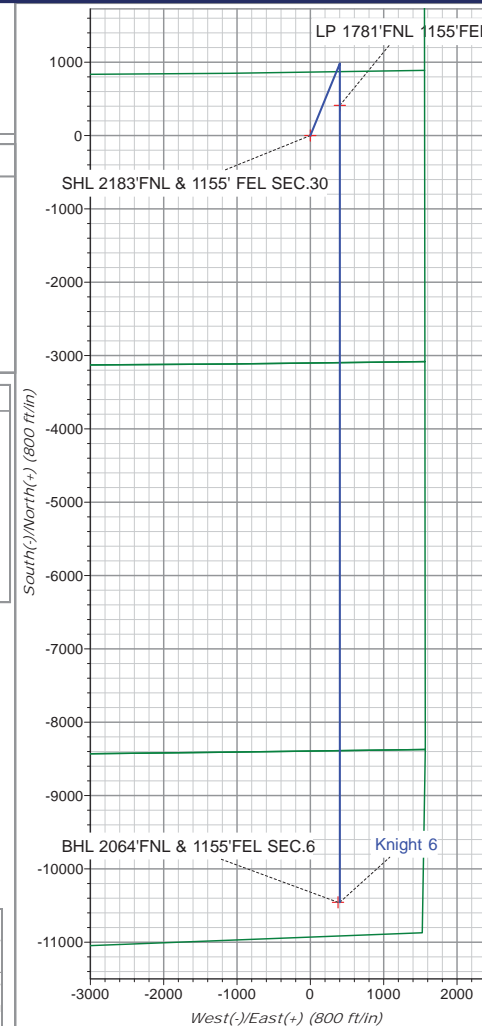
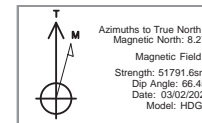
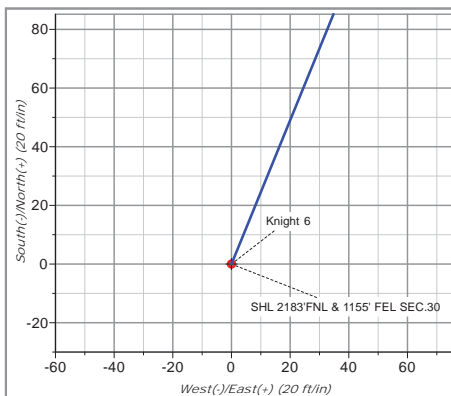


Company: Cub Creek Energy, LLC
Project: SEC.30-T3N-R68W
Site: Knight Pad SEC.30-3N-68W
Well: Knight 6
Design: Plan 2 (4.9.21)



DESIGN TARGET DETAILS					
Name	TVD	+N/-S	+E/-W	Latitude	Longitude
LP 1781'FNL 1155'FEL	7130.0	411.3	401.8	40.198879	-105.040532
BHL 2064'FNL & 1155'FEL SEC.6	7130.0	-10455.4	377.3	40.169050	-105.040620
SHL 2183'FNL & 1155' FEL SEC.30	0.0	0.0	0.0	40.197750	-105.041970

ANNOTATIONS							Annotation
TVD	MD	Inc	Azi	+N/-S	+E/-W	Vsect	
800.5	800.5	0.00	0.00	0.0	0.0	0.0	Start Build 2.00
1454.0	1459.8	13.19	22.21	69.9	28.5	-68.9	Start 3998.4 hold at 1459.8 MD
5347.0	5458.2	13.19	22.21	914.4	373.3	-900.3	Start Drop -2.00
6000.5	6117.5	0.00	0.00	984.3	401.8	-969.2	Start 556.5 hold at 6117.5 MD
6557.0	6674.0	0.00	0.00	984.3	401.8	-969.2	Start DLS 10.00 TFO 180.00
7130.0	7574.1	90.00	180.00	411.3	401.8	-396.6	Start 10865.8 hold at 7574.1 MD
7130.2	18439.9	90.00	180.00	-10454.5	401.8	10462.2	TD at 18439.9





Ensign Energy Services Inc.

Planning Report



Database:	US_EDM	Local Co-ordinate Reference:	Well Knight 6
Company:	Cub Creek Energy, LLC	TVD Reference:	RKB @ 5010.0ft
Project:	SEC.30-T3N-R68W	MD Reference:	RKB @ 5010.0ft
Site:	Knight Pad SEC.30-3N-68W	North Reference:	True
Well:	Knight 6	Survey Calculation Method:	Minimum Curvature
Wellbore:	Wellbore #1 Knight 6		
Design:	Plan 2 (4.9.21)		

Project	SEC.30-T3N-R68W		
Map System:	US State Plane 1983	System Datum:	Mean Sea Level
Geo Datum:	North American Datum 1983		
Map Zone:	Colorado Northern Zone		Using geodetic scale factor

Site	Knight Pad SEC.30-3N-68W		
Site Position:		Northing:	1,315,245.93 usft
From:	Lat/Long	Easting:	3,127,923.58 usft
Position Uncertainty:	0.0 ft	Slot Radius:	13-3/16 "
		Latitude:	40.197840
		Longitude:	-105.042050
		Grid Convergence:	0.30 °

Well	Knight 6		
Well Position	+N/-S	-32.8 ft	Northing:
	+E/-W	22.3 ft	Easting:
Position Uncertainty	0.0 ft	Wellhead Elevation:	0.0 ft
		Latitude:	40.197750
		Longitude:	-105.041970
		Ground Level:	4,993.0 ft

Wellbore	Wellbore #1 Knight 6				
Magnetics	Model Name	Sample Date	Declination (°)	Dip Angle (°)	Field Strength (nT)
	HDGM	03/02/2021	8.27	66.45	51,792

Design	Plan 2 (4.9.21)			
Audit Notes:				
Version:	Phase:	PLAN	Tie On Depth:	0.0
Vertical Section:	Depth From (TVD) (ft)	+N/-S (ft)	+E/-W (ft)	Direction (°)
	0.0	0.0	0.0	177.93

Plan Sections										
Measured Depth (ft)	Inclination (°)	Azimuth (°)	Vertical Depth (ft)	+N/-S (ft)	+E/-W (ft)	Dogleg Rate (°/100usft)	Build Rate (°/100usft)	Turn Rate (°/100usft)	TFO (°)	Target
0.0	0.00	0.00	0.0	0.0	0.0	0.00	0.00	0.00	0.00	
800.5	0.00	0.00	800.5	0.0	0.0	0.00	0.00	0.00	0.00	
1,459.8	13.19	22.21	1,454.0	69.9	28.5	2.00	2.00	0.00	22.21	
5,458.2	13.19	22.21	5,347.0	914.4	373.3	0.00	0.00	0.00	0.00	
6,117.5	0.00	0.00	6,000.5	984.3	401.8	2.00	-2.00	0.00	180.00	
6,674.0	0.00	0.00	6,557.0	984.3	401.8	0.00	0.00	0.00	0.00	
7,574.1	90.00	180.00	7,130.0	411.3	401.8	10.00	10.00	20.00	180.00	LP 1781'FNL 1155'
18,439.9	90.00	180.00	7,130.2	-10,454.5	401.8	0.00	0.00	0.00	0.00	BHL 2064'FNL & 11



Ensign Energy Services Inc.

Planning Report



Database:	US_EDM	Local Co-ordinate Reference:	Well Knight 6
Company:	Cub Creek Energy, LLC	TVD Reference:	RKB @ 5010.0ft
Project:	SEC.30-T3N-R68W	MD Reference:	RKB @ 5010.0ft
Site:	Knight Pad SEC.30-3N-68W	North Reference:	True
Well:	Knight 6	Survey Calculation Method:	Minimum Curvature
Wellbore:	Wellbore #1 Knight 6		
Design:	Plan 2 (4.9.21)		

Planned Survey									
Measured Depth (ft)	Inclination (°)	Azimuth (°)	Vertical Depth (ft)	+N/-S (ft)	+E/-W (ft)	Vertical Section (ft)	Dogleg Rate (°/100usft)	Build Rate (°/100usft)	Turn Rate (°/100usft)
0.0	0.00	0.00	0.0	0.0	0.0	0.0	0.00	0.00	0.00
100.0	0.00	0.00	100.0	0.0	0.0	0.0	0.00	0.00	0.00
200.0	0.00	0.00	200.0	0.0	0.0	0.0	0.00	0.00	0.00
300.0	0.00	0.00	300.0	0.0	0.0	0.0	0.00	0.00	0.00
400.0	0.00	0.00	400.0	0.0	0.0	0.0	0.00	0.00	0.00
500.0	0.00	0.00	500.0	0.0	0.0	0.0	0.00	0.00	0.00
600.0	0.00	0.00	600.0	0.0	0.0	0.0	0.00	0.00	0.00
700.0	0.00	0.00	700.0	0.0	0.0	0.0	0.00	0.00	0.00
800.5	0.00	0.00	800.5	0.0	0.0	0.0	0.00	0.00	0.00
Start Build 2.00									
900.0	1.99	22.21	900.0	1.6	0.7	-1.6	2.00	2.00	0.00
1,000.0	3.99	22.21	999.8	6.4	2.6	-6.3	2.00	2.00	0.00
1,100.0	5.99	22.21	1,099.5	14.5	5.9	-14.3	2.00	2.00	0.00
1,200.0	7.99	22.21	1,198.7	25.7	10.5	-25.4	2.00	2.00	0.00
1,300.0	9.99	22.21	1,297.5	40.2	16.4	-39.6	2.00	2.00	0.00
1,400.0	11.99	22.21	1,395.6	57.9	23.6	-57.0	2.00	2.00	0.00
1,459.8	13.19	22.21	1,454.0	69.9	28.5	-68.9	2.00	2.00	0.00
Start 3998.4 hold at 1459.8 MD									
1,500.0	13.19	22.21	1,493.1	78.4	32.0	-77.2	0.00	0.00	0.00
1,600.0	13.19	22.21	1,590.5	99.5	40.6	-98.0	0.00	0.00	0.00
1,700.0	13.19	22.21	1,687.9	120.7	49.3	-118.8	0.00	0.00	0.00
1,800.0	13.19	22.21	1,785.2	141.8	57.9	-139.6	0.00	0.00	0.00
1,900.0	13.19	22.21	1,882.6	162.9	66.5	-160.4	0.00	0.00	0.00
2,000.0	13.19	22.21	1,980.0	184.0	75.1	-181.2	0.00	0.00	0.00
2,100.0	13.19	22.21	2,077.3	205.1	83.7	-202.0	0.00	0.00	0.00
2,200.0	13.19	22.21	2,174.7	226.3	92.4	-222.8	0.00	0.00	0.00
2,300.0	13.19	22.21	2,272.0	247.4	101.0	-243.6	0.00	0.00	0.00
2,400.0	13.19	22.21	2,369.4	268.5	109.6	-264.4	0.00	0.00	0.00
2,500.0	13.19	22.21	2,466.8	289.6	118.2	-285.2	0.00	0.00	0.00
2,600.0	13.19	22.21	2,564.1	310.7	126.8	-306.0	0.00	0.00	0.00
2,700.0	13.19	22.21	2,661.5	331.9	135.5	-326.8	0.00	0.00	0.00
2,800.0	13.19	22.21	2,758.9	353.0	144.1	-347.5	0.00	0.00	0.00
2,900.0	13.19	22.21	2,856.2	374.1	152.7	-368.3	0.00	0.00	0.00
3,000.0	13.19	22.21	2,953.6	395.2	161.3	-389.1	0.00	0.00	0.00
3,100.0	13.19	22.21	3,051.0	416.3	169.9	-409.9	0.00	0.00	0.00
3,200.0	13.19	22.21	3,148.3	437.4	178.6	-430.7	0.00	0.00	0.00
3,300.0	13.19	22.21	3,245.7	458.6	187.2	-451.5	0.00	0.00	0.00
3,400.0	13.19	22.21	3,343.0	479.7	195.8	-472.3	0.00	0.00	0.00
3,500.0	13.19	22.21	3,440.4	500.8	204.4	-493.1	0.00	0.00	0.00
3,600.0	13.19	22.21	3,537.8	521.9	213.1	-513.9	0.00	0.00	0.00
3,700.0	13.19	22.21	3,635.1	543.0	221.7	-534.7	0.00	0.00	0.00
3,800.0	13.19	22.21	3,732.5	564.2	230.3	-555.5	0.00	0.00	0.00
3,900.0	13.19	22.21	3,829.9	585.3	238.9	-576.3	0.00	0.00	0.00
4,000.0	13.19	22.21	3,927.2	606.4	247.5	-597.1	0.00	0.00	0.00
4,100.0	13.19	22.21	4,024.6	627.5	256.2	-617.9	0.00	0.00	0.00
4,200.0	13.19	22.21	4,121.9	648.6	264.8	-638.7	0.00	0.00	0.00
4,300.0	13.19	22.21	4,219.3	669.8	273.4	-659.5	0.00	0.00	0.00
4,400.0	13.19	22.21	4,316.7	690.9	282.0	-680.3	0.00	0.00	0.00
4,500.0	13.19	22.21	4,414.0	712.0	290.6	-701.1	0.00	0.00	0.00
4,600.0	13.19	22.21	4,511.4	733.1	299.3	-721.8	0.00	0.00	0.00
4,700.0	13.19	22.21	4,608.8	754.2	307.9	-742.6	0.00	0.00	0.00
4,800.0	13.19	22.21	4,706.1	775.4	316.5	-763.4	0.00	0.00	0.00
4,900.0	13.19	22.21	4,803.5	796.5	325.1	-784.2	0.00	0.00	0.00
5,000.0	13.19	22.21	4,900.9	817.6	333.8	-805.0	0.00	0.00	0.00



Ensign Energy Services Inc.

Planning Report



Database:	US_EDM	Local Co-ordinate Reference:	Well Knight 6
Company:	Cub Creek Energy, LLC	TVD Reference:	RKB @ 5010.0ft
Project:	SEC.30-T3N-R68W	MD Reference:	RKB @ 5010.0ft
Site:	Knight Pad SEC.30-3N-68W	North Reference:	True
Well:	Knight 6	Survey Calculation Method:	Minimum Curvature
Wellbore:	Wellbore #1 Knight 6		
Design:	Plan 2 (4.9.21)		

Planned Survey									
Measured Depth (ft)	Inclination (°)	Azimuth (°)	Vertical Depth (ft)	+N/-S (ft)	+E/-W (ft)	Vertical Section (ft)	Dogleg Rate (°/100usft)	Build Rate (°/100usft)	Turn Rate (°/100usft)
5,100.0	13.19	22.21	4,998.2	838.7	342.4	-825.8	0.00	0.00	0.00
5,200.0	13.19	22.21	5,095.6	859.8	351.0	-846.6	0.00	0.00	0.00
5,300.0	13.19	22.21	5,192.9	881.0	359.6	-867.4	0.00	0.00	0.00
5,400.0	13.19	22.21	5,290.3	902.1	368.2	-888.2	0.00	0.00	0.00
5,458.2	13.19	22.21	5,347.0	914.4	373.3	-900.3	0.00	0.00	0.00
Start Drop -2.00									
5,500.0	12.35	22.21	5,387.7	922.9	376.7	-908.7	2.00	-2.00	0.00
5,600.0	10.35	22.21	5,485.8	941.1	384.2	-926.7	2.00	-2.00	0.00
5,700.0	8.35	22.21	5,584.4	956.2	390.3	-941.5	2.00	-2.00	0.00
5,800.0	6.35	22.21	5,683.6	968.0	395.2	-953.1	2.00	-2.00	0.00
5,900.0	4.35	22.21	5,783.2	976.7	398.7	-961.6	2.00	-2.00	0.00
6,000.0	2.35	22.21	5,883.0	982.1	400.9	-967.0	2.00	-2.00	0.00
6,100.0	0.35	22.21	5,983.0	984.3	401.8	-969.1	2.00	-2.00	0.00
6,117.5	0.00	0.00	6,000.5	984.3	401.8	-969.2	2.00	-2.00	0.00
Start 556.5 hold at 6117.5 MD									
6,200.0	0.00	0.00	6,083.0	984.3	401.8	-969.2	0.00	0.00	0.00
6,300.0	0.00	0.00	6,183.0	984.3	401.8	-969.2	0.00	0.00	0.00
6,400.0	0.00	0.00	6,283.0	984.3	401.8	-969.2	0.00	0.00	0.00
6,500.0	0.00	0.00	6,383.0	984.3	401.8	-969.2	0.00	0.00	0.00
6,600.0	0.00	0.00	6,483.0	984.3	401.8	-969.2	0.00	0.00	0.00
6,674.0	0.00	0.00	6,557.0	984.3	401.8	-969.2	0.00	0.00	0.00
Start DLS 10.00 TFO 180.00									
6,700.0	2.60	180.00	6,583.0	983.7	401.8	-968.6	10.00	10.00	0.00
6,750.0	7.60	180.00	6,632.7	979.3	401.8	-964.1	10.00	10.00	0.00
6,800.0	12.60	180.00	6,682.0	970.5	401.8	-955.4	10.00	10.00	0.00
6,850.0	17.60	180.00	6,730.2	957.5	401.8	-942.4	10.00	10.00	0.00
6,900.0	22.60	180.00	6,777.2	940.3	401.8	-925.2	10.00	10.00	0.00
6,950.0	27.60	180.00	6,822.4	919.1	401.8	-904.0	10.00	10.00	0.00
7,000.0	32.59	180.00	6,865.7	894.1	401.8	-879.0	10.00	10.00	0.00
7,050.0	37.59	180.00	6,906.6	865.3	401.8	-850.3	10.00	10.00	0.00
7,100.0	42.59	180.00	6,944.8	833.1	401.8	-818.1	10.00	10.00	0.00
7,150.0	47.59	180.00	6,980.1	797.7	401.8	-782.7	10.00	10.00	0.00
7,200.0	52.59	180.00	7,012.2	759.4	401.8	-744.4	10.00	10.00	0.00
7,250.0	57.59	180.00	7,040.8	718.4	401.8	-703.4	10.00	10.00	0.00
7,300.0	62.59	180.00	7,065.7	675.1	401.8	-660.1	10.00	10.00	0.00
7,350.0	67.59	180.00	7,086.7	629.7	401.8	-614.8	10.00	10.00	0.00
7,400.0	72.59	180.00	7,103.8	582.7	401.8	-567.9	10.00	10.00	0.00
7,450.0	77.59	180.00	7,116.6	534.4	401.8	-519.6	10.00	10.00	0.00
7,500.0	82.59	180.00	7,125.2	485.2	401.8	-470.4	10.00	10.00	0.00
7,550.0	87.59	180.00	7,129.5	435.4	401.8	-420.6	10.00	10.00	0.00
7,574.1	90.00	180.00	7,130.0	411.3	401.8	-396.6	10.00	10.00	0.00
Start 10865.8 hold at 7574.1 MD									
7,600.0	90.00	180.00	7,130.0	385.4	401.8	-370.7	0.00	0.00	0.00
7,700.0	90.00	180.00	7,130.0	285.4	401.8	-270.7	0.00	0.00	0.00
7,800.0	90.00	180.00	7,130.0	185.4	401.8	-170.8	0.00	0.00	0.00
7,900.0	90.00	180.00	7,130.0	85.4	401.8	-70.8	0.00	0.00	0.00
8,000.0	90.00	180.00	7,130.0	-14.6	401.8	29.1	0.00	0.00	0.00
8,100.0	90.00	180.00	7,130.0	-114.6	401.8	129.0	0.00	0.00	0.00
8,200.0	90.00	180.00	7,130.0	-214.6	401.8	229.0	0.00	0.00	0.00
8,300.0	90.00	180.00	7,130.0	-314.6	401.8	328.9	0.00	0.00	0.00
8,400.0	90.00	180.00	7,130.0	-414.6	401.8	428.8	0.00	0.00	0.00
8,500.0	90.00	180.00	7,130.0	-514.6	401.8	528.8	0.00	0.00	0.00
8,600.0	90.00	180.00	7,130.0	-614.6	401.8	628.7	0.00	0.00	0.00



Ensign Energy Services Inc.

Planning Report



Database:	US_EDM	Local Co-ordinate Reference:	Well Knight 6
Company:	Cub Creek Energy, LLC	TVD Reference:	RKB @ 5010.0ft
Project:	SEC.30-T3N-R68W	MD Reference:	RKB @ 5010.0ft
Site:	Knight Pad SEC.30-3N-68W	North Reference:	True
Well:	Knight 6	Survey Calculation Method:	Minimum Curvature
Wellbore:	Wellbore #1 Knight 6		
Design:	Plan 2 (4.9.21)		

Planned Survey									
Measured Depth (ft)	Inclination (°)	Azimuth (°)	Vertical Depth (ft)	+N/-S (ft)	+E/-W (ft)	Vertical Section (ft)	Dogleg Rate (°/100usft)	Build Rate (°/100usft)	Turn Rate (°/100usft)
8,700.0	90.00	180.00	7,130.0	-714.6	401.8	728.6	0.00	0.00	0.00
8,800.0	90.00	180.00	7,130.0	-814.6	401.8	828.6	0.00	0.00	0.00
8,900.0	90.00	180.00	7,130.0	-914.6	401.8	928.5	0.00	0.00	0.00
9,000.0	90.00	180.00	7,130.0	-1,014.6	401.8	1,028.4	0.00	0.00	0.00
9,100.0	90.00	180.00	7,130.0	-1,114.6	401.8	1,128.4	0.00	0.00	0.00
9,200.0	90.00	180.00	7,130.0	-1,214.6	401.8	1,228.3	0.00	0.00	0.00
9,300.0	90.00	180.00	7,130.0	-1,314.6	401.8	1,328.2	0.00	0.00	0.00
9,400.0	90.00	180.00	7,130.0	-1,414.6	401.8	1,428.2	0.00	0.00	0.00
9,500.0	90.00	180.00	7,130.0	-1,514.6	401.8	1,528.1	0.00	0.00	0.00
9,600.0	90.00	180.00	7,130.0	-1,614.6	401.8	1,628.0	0.00	0.00	0.00
9,700.0	90.00	180.00	7,130.0	-1,714.6	401.8	1,728.0	0.00	0.00	0.00
9,800.0	90.00	180.00	7,130.0	-1,814.6	401.8	1,827.9	0.00	0.00	0.00
9,900.0	90.00	180.00	7,130.0	-1,914.6	401.8	1,927.9	0.00	0.00	0.00
10,000.0	90.00	180.00	7,130.0	-2,014.6	401.8	2,027.8	0.00	0.00	0.00
10,100.0	90.00	180.00	7,130.0	-2,114.6	401.8	2,127.7	0.00	0.00	0.00
10,200.0	90.00	180.00	7,130.0	-2,214.6	401.8	2,227.7	0.00	0.00	0.00
10,300.0	90.00	180.00	7,130.0	-2,314.6	401.8	2,327.6	0.00	0.00	0.00
10,400.0	90.00	180.00	7,130.0	-2,414.6	401.8	2,427.5	0.00	0.00	0.00
10,500.0	90.00	180.00	7,130.0	-2,514.6	401.8	2,527.5	0.00	0.00	0.00
10,600.0	90.00	180.00	7,130.0	-2,614.6	401.8	2,627.4	0.00	0.00	0.00
10,700.0	90.00	180.00	7,130.0	-2,714.6	401.8	2,727.3	0.00	0.00	0.00
10,800.0	90.00	180.00	7,130.0	-2,814.6	401.8	2,827.3	0.00	0.00	0.00
10,900.0	90.00	180.00	7,130.0	-2,914.6	401.8	2,927.2	0.00	0.00	0.00
11,000.0	90.00	180.00	7,130.0	-3,014.6	401.8	3,027.1	0.00	0.00	0.00
11,100.0	90.00	180.00	7,130.1	-3,114.6	401.8	3,127.1	0.00	0.00	0.00
11,200.0	90.00	180.00	7,130.1	-3,214.6	401.8	3,227.0	0.00	0.00	0.00
11,300.0	90.00	180.00	7,130.1	-3,314.6	401.8	3,326.9	0.00	0.00	0.00
11,400.0	90.00	180.00	7,130.1	-3,414.6	401.8	3,426.9	0.00	0.00	0.00
11,500.0	90.00	180.00	7,130.1	-3,514.6	401.8	3,526.8	0.00	0.00	0.00
11,600.0	90.00	180.00	7,130.1	-3,614.6	401.8	3,626.7	0.00	0.00	0.00
11,700.0	90.00	180.00	7,130.1	-3,714.6	401.8	3,726.7	0.00	0.00	0.00
11,800.0	90.00	180.00	7,130.1	-3,814.6	401.8	3,826.6	0.00	0.00	0.00
11,900.0	90.00	180.00	7,130.1	-3,914.6	401.8	3,926.5	0.00	0.00	0.00
12,000.0	90.00	180.00	7,130.1	-4,014.6	401.8	4,026.5	0.00	0.00	0.00
12,100.0	90.00	180.00	7,130.1	-4,114.6	401.8	4,126.4	0.00	0.00	0.00
12,200.0	90.00	180.00	7,130.1	-4,214.6	401.8	4,226.4	0.00	0.00	0.00
12,300.0	90.00	180.00	7,130.1	-4,314.6	401.8	4,326.3	0.00	0.00	0.00
12,400.0	90.00	180.00	7,130.1	-4,414.6	401.8	4,426.2	0.00	0.00	0.00
12,500.0	90.00	180.00	7,130.1	-4,514.6	401.8	4,526.2	0.00	0.00	0.00
12,600.0	90.00	180.00	7,130.1	-4,614.6	401.8	4,626.1	0.00	0.00	0.00
12,700.0	90.00	180.00	7,130.1	-4,714.6	401.8	4,726.0	0.00	0.00	0.00
12,800.0	90.00	180.00	7,130.1	-4,814.6	401.8	4,826.0	0.00	0.00	0.00
12,900.0	90.00	180.00	7,130.1	-4,914.6	401.8	4,925.9	0.00	0.00	0.00
13,000.0	90.00	180.00	7,130.1	-5,014.6	401.8	5,025.8	0.00	0.00	0.00
13,100.0	90.00	180.00	7,130.1	-5,114.6	401.8	5,125.8	0.00	0.00	0.00
13,200.0	90.00	180.00	7,130.1	-5,214.6	401.8	5,225.7	0.00	0.00	0.00
13,300.0	90.00	180.00	7,130.1	-5,314.6	401.8	5,325.6	0.00	0.00	0.00
13,400.0	90.00	180.00	7,130.1	-5,414.6	401.8	5,425.6	0.00	0.00	0.00
13,500.0	90.00	180.00	7,130.1	-5,514.6	401.8	5,525.5	0.00	0.00	0.00
13,600.0	90.00	180.00	7,130.1	-5,614.6	401.8	5,625.4	0.00	0.00	0.00
13,700.0	90.00	180.00	7,130.1	-5,714.6	401.8	5,725.4	0.00	0.00	0.00
13,800.0	90.00	180.00	7,130.1	-5,814.6	401.8	5,825.3	0.00	0.00	0.00
13,900.0	90.00	180.00	7,130.1	-5,914.6	401.8	5,925.2	0.00	0.00	0.00
14,000.0	90.00	180.00	7,130.1	-6,014.6	401.8	6,025.2	0.00	0.00	0.00



Ensign Energy Services Inc.

Planning Report



Database:	US_EDM	Local Co-ordinate Reference:	Well Knight 6
Company:	Cub Creek Energy, LLC	TVD Reference:	RKB @ 5010.0ft
Project:	SEC.30-T3N-R68W	MD Reference:	RKB @ 5010.0ft
Site:	Knight Pad SEC.30-3N-68W	North Reference:	True
Well:	Knight 6	Survey Calculation Method:	Minimum Curvature
Wellbore:	Wellbore #1 Knight 6		
Design:	Plan 2 (4.9.21)		

Planned Survey									
Measured Depth (ft)	Inclination (°)	Azimuth (°)	Vertical Depth (ft)	+N/-S (ft)	+E/-W (ft)	Vertical Section (ft)	Dogleg Rate (°/100usft)	Build Rate (°/100usft)	Turn Rate (°/100usft)
14,100.0	90.00	180.00	7,130.1	-6,114.6	401.8	6,125.1	0.00	0.00	0.00
14,200.0	90.00	180.00	7,130.1	-6,214.6	401.8	6,225.1	0.00	0.00	0.00
14,300.0	90.00	180.00	7,130.1	-6,314.6	401.8	6,325.0	0.00	0.00	0.00
14,400.0	90.00	180.00	7,130.1	-6,414.6	401.8	6,424.9	0.00	0.00	0.00
14,500.0	90.00	180.00	7,130.1	-6,514.6	401.8	6,524.9	0.00	0.00	0.00
14,600.0	90.00	180.00	7,130.1	-6,614.6	401.8	6,624.8	0.00	0.00	0.00
14,700.0	90.00	180.00	7,130.1	-6,714.6	401.8	6,724.7	0.00	0.00	0.00
14,800.0	90.00	180.00	7,130.1	-6,814.6	401.8	6,824.7	0.00	0.00	0.00
14,900.0	90.00	180.00	7,130.1	-6,914.6	401.8	6,924.6	0.00	0.00	0.00
15,000.0	90.00	180.00	7,130.1	-7,014.6	401.8	7,024.5	0.00	0.00	0.00
15,100.0	90.00	180.00	7,130.1	-7,114.6	401.8	7,124.5	0.00	0.00	0.00
15,200.0	90.00	180.00	7,130.1	-7,214.6	401.8	7,224.4	0.00	0.00	0.00
15,300.0	90.00	180.00	7,130.1	-7,314.6	401.8	7,324.3	0.00	0.00	0.00
15,400.0	90.00	180.00	7,130.1	-7,414.6	401.8	7,424.3	0.00	0.00	0.00
15,500.0	90.00	180.00	7,130.1	-7,514.6	401.8	7,524.2	0.00	0.00	0.00
15,600.0	90.00	180.00	7,130.1	-7,614.6	401.8	7,624.1	0.00	0.00	0.00
15,700.0	90.00	180.00	7,130.1	-7,714.6	401.8	7,724.1	0.00	0.00	0.00
15,800.0	90.00	180.00	7,130.1	-7,814.6	401.8	7,824.0	0.00	0.00	0.00
15,900.0	90.00	180.00	7,130.1	-7,914.6	401.8	7,923.9	0.00	0.00	0.00
16,000.0	90.00	180.00	7,130.1	-8,014.6	401.8	8,023.9	0.00	0.00	0.00
16,100.0	90.00	180.00	7,130.1	-8,114.6	401.8	8,123.8	0.00	0.00	0.00
16,200.0	90.00	180.00	7,130.1	-8,214.6	401.8	8,223.8	0.00	0.00	0.00
16,300.0	90.00	180.00	7,130.1	-8,314.6	401.8	8,323.7	0.00	0.00	0.00
16,400.0	90.00	180.00	7,130.1	-8,414.6	401.8	8,423.6	0.00	0.00	0.00
16,500.0	90.00	180.00	7,130.1	-8,514.6	401.8	8,523.6	0.00	0.00	0.00
16,600.0	90.00	180.00	7,130.1	-8,614.6	401.8	8,623.5	0.00	0.00	0.00
16,700.0	90.00	180.00	7,130.1	-8,714.6	401.8	8,723.4	0.00	0.00	0.00
16,800.0	90.00	180.00	7,130.1	-8,814.6	401.8	8,823.4	0.00	0.00	0.00
16,900.0	90.00	180.00	7,130.1	-8,914.6	401.8	8,923.3	0.00	0.00	0.00
17,000.0	90.00	180.00	7,130.1	-9,014.6	401.8	9,023.2	0.00	0.00	0.00
17,100.0	90.00	180.00	7,130.1	-9,114.6	401.8	9,123.2	0.00	0.00	0.00
17,200.0	90.00	180.00	7,130.1	-9,214.6	401.8	9,223.1	0.00	0.00	0.00
17,300.0	90.00	180.00	7,130.1	-9,314.6	401.8	9,323.0	0.00	0.00	0.00
17,400.0	90.00	180.00	7,130.1	-9,414.6	401.8	9,423.0	0.00	0.00	0.00
17,500.0	90.00	180.00	7,130.1	-9,514.6	401.8	9,522.9	0.00	0.00	0.00
17,600.0	90.00	180.00	7,130.1	-9,614.6	401.8	9,622.8	0.00	0.00	0.00
17,700.0	90.00	180.00	7,130.1	-9,714.6	401.8	9,722.8	0.00	0.00	0.00
17,800.0	90.00	180.00	7,130.1	-9,814.6	401.8	9,822.7	0.00	0.00	0.00
17,900.0	90.00	180.00	7,130.1	-9,914.6	401.8	9,922.6	0.00	0.00	0.00
18,000.0	90.00	180.00	7,130.2	-10,014.6	401.8	10,022.6	0.00	0.00	0.00
18,100.0	90.00	180.00	7,130.2	-10,114.6	401.8	10,122.5	0.00	0.00	0.00
18,200.0	90.00	180.00	7,130.2	-10,214.6	401.8	10,222.5	0.00	0.00	0.00
18,300.0	90.00	180.00	7,130.2	-10,314.6	401.8	10,322.4	0.00	0.00	0.00
18,400.0	90.00	180.00	7,130.2	-10,414.6	401.8	10,422.3	0.00	0.00	0.00
18,439.9	90.00	180.00	7,130.2	-10,454.5	401.8	10,462.2	0.00	0.00	0.00
TD at 18439.9									



Database:	US_EDM	Local Co-ordinate Reference:	Well Knight 6
Company:	Cub Creek Energy, LLC	TVD Reference:	RKB @ 5010.0ft
Project:	SEC.30-T3N-R68W	MD Reference:	RKB @ 5010.0ft
Site:	Knight Pad SEC.30-3N-68W	North Reference:	True
Well:	Knight 6	Survey Calculation Method:	Minimum Curvature
Wellbore:	Wellbore #1 Knight 6		
Design:	Plan 2 (4.9.21)		

Design Targets									
Target Name									
- hit/miss target	Dip Angle	Dip Dir.	TVD	+N/-S	+E/-W	Northing	Easting	Latitude	Longitude
- Shape	(°)	(°)	(ft)	(ft)	(ft)	(usft)	(usft)		
SHL 2183'FNL & 115'FE - plan hits target center - Point	0.00	0.00	0.0	0.0	0.0	1,315,213.26	3,127,946.09	40.197750	-105.041970
BHL 2064'FNL & 115'FE - plan misses target center by 24.5ft at 18439.9ft MD (7130.2 TVD, -10454.5 N, 401.8 E) - Point	0.00	0.00	7,130.0	-10,455.4	377.3	1,304,760.45	3,128,377.36	40.169050	-105.040620
LP 1781'FNL 1155'FE - plan hits target center - Point	0.00	0.00	7,130.0	411.3	401.8	1,315,626.61	3,128,345.75	40.198879	-105.040532

Plan Annotations				
Measured Depth	Vertical Depth	Local Coordinates		Comment
(ft)	(ft)	+N/-S (ft)	+E/-W (ft)	
800.5	800.5	0.0	0.0	Start Build 2.00
1,459.8	1,454.0	69.9	28.5	Start 3998.4 hold at 1459.8 MD
5,458.2	5,347.0	914.4	373.3	Start Drop -2.00
6,117.5	6,000.5	984.3	401.8	Start 556.5 hold at 6117.5 MD
6,674.0	6,557.0	984.3	401.8	Start DLS 10.00 TFO 180.00
7,574.1	7,130.0	411.3	401.8	Start 10865.8 hold at 7574.1 MD
18,439.9	7,130.2	-10,454.5	401.8	TD at 18439.9