

PDC Energy Inc. DJ Basin

Well Name: **Erwin 2N (Nio B)**

Surface Location: Erwin 5N64W27 1-6 Pad Sec.27-T5N-R64W

North American Datum 1983 , US State Plane 1983, Colorado Northern Zone

Ground Elevation: 4639.0

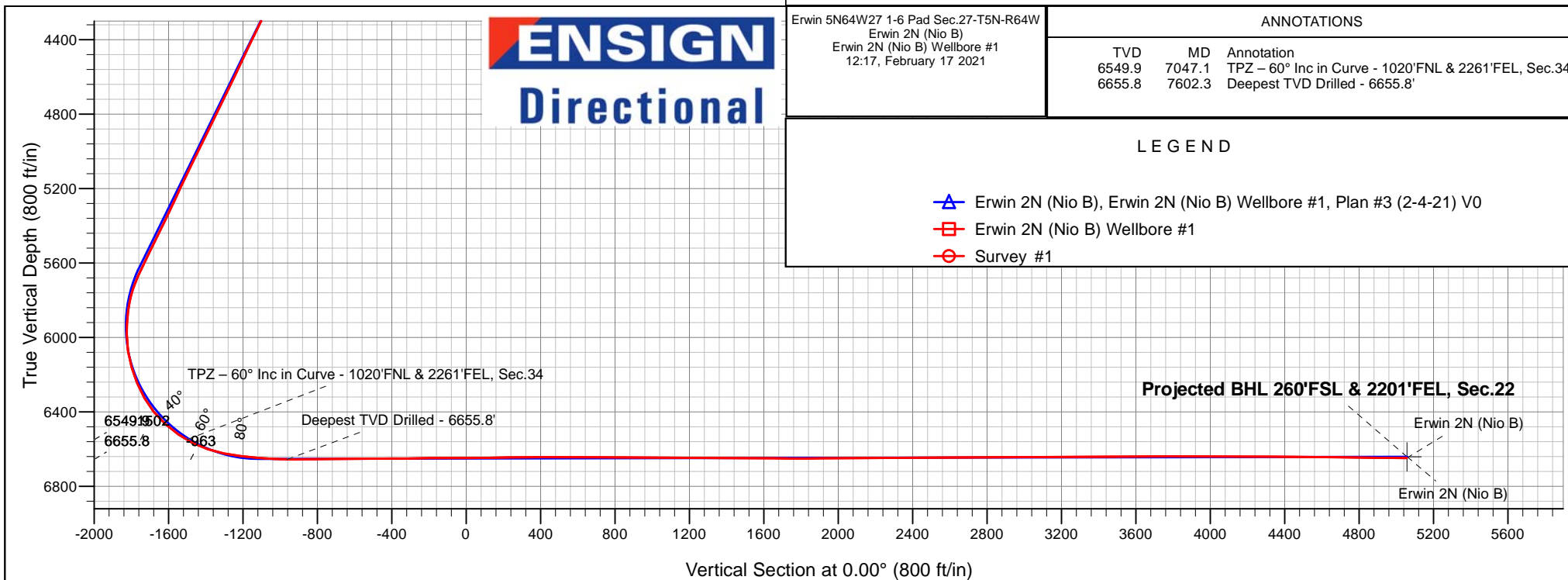
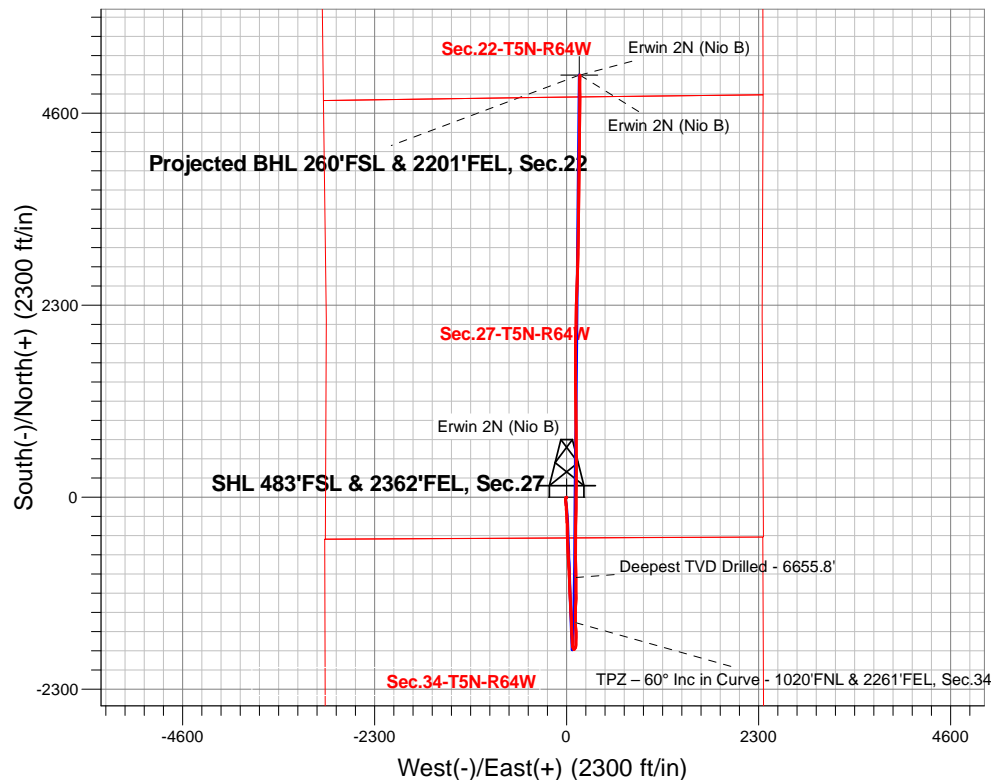
+N/-S +E/-W Northing Easting Latitude Longitude Slot

0.0 0.0 1377056.64 3268944.53 40.364404 -104.534834

Ensign 142 RKB - 28' WELL @ 4667.0ft (Ensign 142 RKB - 28')

FINAL SURVEY

Projected Bottom Hole Location
13,623'MD 6649'TVD 5056'N & 157'E of SHL
89.44 degree Inc @ 0.03 degree Azm





PDC Energy Inc. DJ Basin

SEC.27-T5N-R64W

Erwin 5N64W27 1-6 Pad Sec.27-T5N-R64W

Erwin 2N (Nio B)

Erwin 2N (Nio B) Wellbore #1

Survey: Survey #1

Standard Survey Report

17 February, 2021

Company:	PDC Energy Inc. DJ Basin	Local Co-ordinate Reference:	Well Erwin 2N (Nio B)
Project:	SEC.27-T5N-R64W	TVD Reference:	WELL @ 4667.0ft (Ensign 142 RKB - 28')
Site:	Erwin 5N64W27 1-6 Pad Sec.27-T5N-R64W	MD Reference:	WELL @ 4667.0ft (Ensign 142 RKB - 28')
Well:	Erwin 2N (Nio B)	North Reference:	True
Wellbore:	Erwin 2N (Nio B) Wellbore #1	Survey Calculation Method:	Minimum Curvature
Design:	Erwin 2N (Nio B) Wellbore #1	Database:	US_EDM

Project	SEC.27-T5N-R64W, Weld County, Colorado		
Map System:	US State Plane 1983	System Datum:	Mean Sea Level
Geo Datum:	North American Datum 1983		Using Well Reference Point
Map Zone:	Colorado Northern Zone		Using geodetic scale factor

Site		Erwin 5N64W27 1-6 Pad Sec.27-T5N-R64W						
Site Position:		Northing:	1,377,056.42	usft	Latitude:	40.364404		
From:	Lat/Long	Easting:	3,268,929.60	usft	Longitude:	-104.534888		
Position Uncertainty:	0.0	ft	Slot Radius:	13-3/16	"	Grid Convergence:	0.62	°

Well	Erwin 2N (Nio B)					
Well Position	+N/-S	0.0 ft	Northing:	1,377,056.64 usft	Latitude:	40.364404
	+E/-W	0.0 ft	Easting:	3,268,944.53 usft	Longitude:	-104.534834
Position Uncertainty		0.0 ft	Wellhead Elevation:	0.0 ft	Ground Level:	4,639.0 ft

Wellbore	Erwin 2N (Nio B) Wellbore #1				
Magnetics	Model Name	Sample Date	Declination (°)	Dip Angle (°)	Field Strength (nT)
	HDGM	02/04/2021	7.75	66.77	51,975

Design	Erwin 2N (Nio B) Wellbore #1				
Audit Notes:					
Version:	1.0	Phase:	ACTUAL	Tie On Depth:	0.0
Vertical Section:	Depth From (TVD) (ft)	+N/-S (ft)	+E/-W (ft)	Direction (°)	
	0.0	0.0	0.0		0.00

Survey Program	Date	02/17/2021			
From (ft)	To (ft)	Survey (Wellbore)	Tool Name	Description	
162.0	13,623.0	Survey #1 (Erwin 2N (Nio B) Wellbore #1)	MWD	MWD - Standard	

Survey										
Measured Depth (ft)	Inclination (°)	Azimuth (°)	Vertical Depth (ft)	+N/-S (ft)	+E/-W (ft)	Vertical Section (ft)	Dogleg Rate (°/100usft)	Build Rate (°/100usft)	Turn Rate (°/100usft)	
0.0	0.00	0.00	0.0	0.0	0.0	0.0	0.00	0.00	0.00	
162.0	0.40	267.60	162.0	0.0	-0.6	0.0	0.25	0.25	0.00	
253.0	0.30	242.10	253.0	-0.1	-1.1	-0.1	0.20	-0.11	-28.02	
343.0	0.40	234.20	343.0	-0.4	-1.6	-0.4	0.12	0.11	-8.78	
463.0	0.30	260.50	463.0	-0.7	-2.2	-0.7	0.16	-0.08	21.92	
553.0	0.40	241.70	553.0	-0.9	-2.7	-0.9	0.17	0.11	-20.89	
642.0	0.20	244.00	642.0	-1.1	-3.1	-1.1	0.23	-0.22	2.58	
731.0	0.40	229.60	731.0	-1.4	-3.5	-1.4	0.24	0.22	-16.18	
820.0	0.40	238.90	820.0	-1.8	-4.0	-1.8	0.07	0.00	10.45	
909.0	0.40	254.90	909.0	-2.0	-4.6	-2.0	0.13	0.00	17.98	

Company:	PDC Energy Inc. DJ Basin	Local Co-ordinate Reference:	Well Erwin 2N (Nio B)
Project:	SEC.27-T5N-R64W	TVD Reference:	WELL @ 4667.0ft (Ensign 142 RKB - 28')
Site:	Erwin 5N64W27 1-6 Pad Sec.27-T5N-R64W	MD Reference:	WELL @ 4667.0ft (Ensign 142 RKB - 28')
Well:	Erwin 2N (Nio B)	North Reference:	True
Wellbore:	Erwin 2N (Nio B) Wellbore #1	Survey Calculation Method:	Minimum Curvature
Design:	Erwin 2N (Nio B) Wellbore #1	Database:	US_EDM

Survey									
Measured Depth (ft)	Inclination (°)	Azimuth (°)	Vertical Depth (ft)	+N/-S (ft)	+E/-W (ft)	Vertical Section (ft)	Dogleg Rate (°/100usft)	Build Rate (°/100usft)	Turn Rate (°/100usft)
998.0	0.40	245.10	998.0	-2.2	-5.2	-2.2	0.08	0.00	-11.01
1,088.0	1.90	214.50	1,088.0	-3.6	-6.3	-3.6	1.74	1.67	-34.00
1,177.0	2.90	214.30	1,176.9	-6.7	-8.4	-6.7	1.12	1.12	-0.22
1,263.0	4.20	206.00	1,262.7	-11.3	-11.0	-11.3	1.62	1.51	-9.65
1,352.0	6.00	191.10	1,351.4	-18.8	-13.3	-18.8	2.49	2.02	-16.74
1,442.0	6.50	180.70	1,440.8	-28.5	-14.3	-28.5	1.37	0.56	-11.56
1,530.0	7.60	168.20	1,528.2	-39.2	-13.2	-39.2	2.14	1.25	-14.20
1,608.0	7.90	168.80	1,605.5	-49.5	-11.1	-49.5	0.40	0.38	0.77
1,702.0	8.19	171.10	1,698.5	-62.4	-8.8	-62.4	0.46	0.31	2.45
1,791.0	11.72	180.00	1,786.2	-77.7	-7.8	-77.7	4.32	3.97	10.00
1,880.0	10.89	175.80	1,873.5	-95.2	-7.2	-95.2	1.31	-0.93	-4.72
1,970.0	11.17	177.10	1,961.8	-112.4	-6.1	-112.4	0.42	0.31	1.44
2,060.0	13.82	178.43	2,049.7	-131.8	-5.4	-131.8	2.96	2.94	1.48
2,150.0	13.80	173.63	2,137.1	-153.2	-3.9	-153.2	1.27	-0.02	-5.33
2,240.0	12.75	177.51	2,224.7	-173.8	-2.3	-173.8	1.53	-1.17	4.31
2,330.0	13.71	174.41	2,312.3	-194.3	-0.8	-194.3	1.33	1.07	-3.44
2,420.0	15.88	177.46	2,399.3	-217.3	0.8	-217.3	2.56	2.41	3.39
2,509.0	16.86	177.84	2,484.7	-242.3	1.8	-242.3	1.11	1.10	0.43
2,599.0	19.45	176.81	2,570.2	-270.3	3.1	-270.3	2.90	2.88	-1.14
2,689.0	22.77	176.98	2,654.1	-302.7	4.9	-302.7	3.69	3.69	0.19
2,779.0	25.56	179.56	2,736.2	-339.5	6.0	-339.5	3.31	3.10	2.87
2,869.0	25.85	179.83	2,817.3	-378.6	6.2	-378.6	0.35	0.32	0.30
2,958.0	24.64	177.89	2,897.8	-416.5	6.9	-416.5	1.65	-1.36	-2.18
3,048.0	25.81	179.15	2,979.2	-454.8	7.9	-454.8	1.43	1.30	1.40
3,137.0	25.93	177.27	3,059.3	-493.6	9.1	-493.6	0.93	0.13	-2.11
3,227.0	25.16	177.51	3,140.5	-532.4	10.9	-532.4	0.86	-0.86	0.27
3,316.0	26.27	177.06	3,220.7	-571.0	12.7	-571.0	1.27	1.25	-0.51
3,406.0	26.16	178.05	3,301.5	-610.7	14.4	-610.7	0.50	-0.12	1.10
3,496.0	25.91	178.41	3,382.3	-650.2	15.6	-650.2	0.33	-0.28	0.40
3,585.0	25.82	175.86	3,462.4	-689.0	17.6	-689.0	1.25	-0.10	-2.87
3,674.0	26.85	178.29	3,542.2	-728.4	19.6	-728.4	1.68	1.16	2.73
3,764.0	26.50	175.83	3,622.6	-768.7	21.6	-768.7	1.29	-0.39	-2.73
3,853.0	25.92	176.34	3,702.4	-807.9	24.3	-807.9	0.70	-0.65	0.57
3,943.0	27.17	177.49	3,783.0	-848.1	26.5	-848.1	1.50	1.39	1.28
4,033.0	26.35	177.05	3,863.3	-888.6	28.4	-888.6	0.94	-0.91	-0.49
4,122.0	25.84	178.46	3,943.2	-927.7	29.9	-927.7	0.90	-0.57	1.58
4,212.0	25.58	177.20	4,024.3	-966.7	31.4	-966.7	0.67	-0.29	-1.40
4,302.0	26.52	177.32	4,105.2	-1,006.2	33.3	-1,006.2	1.05	1.04	0.13
4,391.0	26.95	177.19	4,184.7	-1,046.2	35.2	-1,046.2	0.49	0.48	-0.15
4,481.0	25.24	176.75	4,265.5	-1,085.7	37.3	-1,085.7	1.91	-1.90	-0.49
4,571.0	26.50	178.07	4,346.5	-1,124.9	39.1	-1,124.9	1.54	1.40	1.47
4,660.0	25.71	177.67	4,426.4	-1,164.1	40.5	-1,164.1	0.91	-0.89	-0.45
4,750.0	25.74	177.80	4,507.5	-1,203.1	42.1	-1,203.1	0.07	0.03	0.14
4,841.0	25.34	176.59	4,589.6	-1,242.3	44.0	-1,242.3	0.72	-0.44	-1.33

Company:	PDC Energy Inc. DJ Basin	Local Co-ordinate Reference:	Well Erwin 2N (Nio B)
Project:	SEC.27-T5N-R64W	TVD Reference:	WELL @ 4667.0ft (Ensign 142 RKB - 28')
Site:	Erwin 5N64W27 1-6 Pad Sec.27-T5N-R64W	MD Reference:	WELL @ 4667.0ft (Ensign 142 RKB - 28')
Well:	Erwin 2N (Nio B)	North Reference:	True
Wellbore:	Erwin 2N (Nio B) Wellbore #1	Survey Calculation Method:	Minimum Curvature
Design:	Erwin 2N (Nio B) Wellbore #1	Database:	US_EDM

Survey										
Measured Depth (ft)	Inclination (°)	Azimuth (°)	Vertical Depth (ft)	+N/-S (ft)	+E/-W (ft)	Vertical Section (ft)	Dogleg Rate (°/100usft)	Build Rate (°/100usft)	Turn Rate (°/100usft)	
4,930.0	25.15	176.98	4,670.1	-1,280.2	46.1	-1,280.2	0.28	-0.21	0.44	
5,020.0	25.73	176.17	4,751.4	-1,318.8	48.4	-1,318.8	0.75	0.64	-0.90	
5,109.0	26.60	177.48	4,831.2	-1,358.0	50.6	-1,358.0	1.17	0.98	1.47	
5,199.0	26.92	177.62	4,911.6	-1,398.4	52.3	-1,398.4	0.36	0.36	0.16	
5,289.0	25.57	178.11	4,992.3	-1,438.2	53.8	-1,438.2	1.52	-1.50	0.54	
5,379.0	25.46	176.77	5,073.6	-1,476.9	55.5	-1,476.9	0.65	-0.12	-1.49	
5,469.0	26.23	176.40	5,154.5	-1,516.1	57.9	-1,516.1	0.87	0.86	-0.41	
5,558.0	24.72	175.97	5,234.9	-1,554.3	60.4	-1,554.3	1.71	-1.70	-0.48	
5,648.0	24.94	180.23	5,316.6	-1,592.0	61.7	-1,592.0	2.00	0.24	4.73	
5,738.0	26.46	177.73	5,397.7	-1,631.1	62.4	-1,631.1	2.07	1.69	-2.78	
5,827.0	26.39	177.43	5,477.4	-1,670.6	64.1	-1,670.6	0.17	-0.08	-0.34	
5,917.0	25.38	177.94	5,558.3	-1,709.9	65.6	-1,709.9	1.15	-1.12	0.57	
6,006.0	26.36	176.60	5,638.4	-1,748.7	67.5	-1,748.7	1.28	1.10	-1.51	
6,096.0	20.68	169.88	5,720.9	-1,784.3	71.5	-1,784.3	6.97	-6.31	-7.47	
6,186.0	12.45	155.65	5,807.2	-1,808.8	78.3	-1,808.8	10.13	-9.14	-15.81	
6,275.0	6.62	136.69	5,894.9	-1,821.3	85.8	-1,821.3	7.36	-6.55	-21.30	
6,366.0	0.95	39.53	5,985.7	-1,824.6	89.9	-1,824.6	7.48	-6.23	-106.77	
6,455.0	11.24	43.48	6,074.1	-1,817.7	96.3	-1,817.7	11.56	11.56	4.44	
6,545.0	17.16	19.55	6,161.4	-1,798.8	106.8	-1,798.8	9.13	6.58	-26.59	
6,634.0	22.53	357.98	6,245.2	-1,769.3	110.6	-1,769.3	10.11	6.03	-24.24	
6,724.0	29.75	2.55	6,325.9	-1,729.7	111.0	-1,729.7	8.32	8.02	5.08	
6,813.0	39.17	0.13	6,399.2	-1,679.4	112.0	-1,679.4	10.69	10.58	-2.72	
6,903.0	47.03	358.40	6,464.9	-1,618.0	111.2	-1,618.0	8.83	8.73	-1.92	
6,993.0	55.59	357.49	6,521.1	-1,547.9	108.6	-1,547.9	9.54	9.51	-1.01	
7,047.1	60.00	358.47	6,549.9	-1,502.1	107.0	-1,502.1	8.29	8.15	1.80	
TPZ – 60° Inc in Curve - 1020'FNL & 2261'FEL, Sec.34										
7,082.0	62.85	359.05	6,566.6	-1,471.5	106.4	-1,471.5	8.29	8.16	1.67	
7,172.0	71.93	0.89	6,601.2	-1,388.5	106.4	-1,388.5	10.26	10.09	2.04	
7,261.0	78.84	1.93	6,623.6	-1,302.4	108.5	-1,302.4	7.85	7.76	1.17	
7,351.0	83.19	1.86	6,637.7	-1,213.6	111.4	-1,213.6	4.83	4.83	-0.08	
7,441.0	84.72	357.03	6,647.2	-1,124.2	110.6	-1,124.2	5.60	1.70	-5.37	
7,530.0	86.98	1.98	6,653.6	-1,035.4	109.8	-1,035.4	6.10	2.54	5.56	
7,602.3	89.61	358.52	6,655.7	-963.2	110.1	-963.2	6.01	3.63	-4.79	
Deepest TVD Drilled - 6655.8'										
7,620.0	90.25	357.67	6,655.8	-945.5	109.5	-945.5	6.01	3.64	-4.78	
7,709.0	90.64	359.87	6,655.1	-856.5	107.6	-856.5	2.51	0.44	2.47	
7,799.0	90.64	0.19	6,654.1	-766.5	107.7	-766.5	0.36	0.00	0.36	
7,888.0	90.92	0.44	6,652.9	-677.5	108.2	-677.5	0.42	0.31	0.28	
7,978.0	90.12	359.18	6,652.0	-587.5	107.9	-587.5	1.66	-0.89	-1.40	
8,068.0	90.76	0.61	6,651.4	-497.5	107.7	-497.5	1.74	0.71	1.59	
8,158.0	89.68	359.28	6,651.0	-407.5	107.6	-407.5	1.90	-1.20	-1.48	
8,248.0	90.95	1.42	6,650.5	-317.6	108.2	-317.6	2.76	1.41	2.38	
8,337.0	90.78	1.62	6,649.2	-228.6	110.5	-228.6	0.29	-0.19	0.22	

Company:	PDC Energy Inc. DJ Basin	Local Co-ordinate Reference:	Well Erwin 2N (Nio B)
Project:	SEC.27-T5N-R64W	TVD Reference:	WELL @ 4667.0ft (Ensign 142 RKB - 28')
Site:	Erwin 5N64W27 1-6 Pad Sec.27-T5N-R64W	MD Reference:	WELL @ 4667.0ft (Ensign 142 RKB - 28')
Well:	Erwin 2N (Nio B)	North Reference:	True
Wellbore:	Erwin 2N (Nio B) Wellbore #1	Survey Calculation Method:	Minimum Curvature
Design:	Erwin 2N (Nio B) Wellbore #1	Database:	US_EDM

Survey										
Measured Depth (ft)	Inclination (°)	Azimuth (°)	Vertical Depth (ft)	+N/-S (ft)	+E/-W (ft)	Vertical Section (ft)	Dogleg Rate (°/100usft)	Build Rate (°/100usft)	Turn Rate (°/100usft)	
8,427.0	90.12	0.07	6,648.5	-138.6	111.8	-138.6	1.87	-0.73	-1.72	
8,517.0	90.06	0.40	6,648.3	-48.6	112.2	-48.6	0.37	-0.07	0.37	
8,607.0	90.57	0.29	6,647.8	41.4	112.8	41.4	0.58	0.57	-0.12	
8,697.0	91.03	0.71	6,646.6	131.4	113.5	131.4	0.69	0.51	0.47	
8,787.0	90.83	0.69	6,645.1	221.4	114.6	221.4	0.22	-0.22	-0.02	
8,877.0	90.18	359.86	6,644.3	311.3	115.1	311.3	1.17	-0.72	-0.92	
8,966.0	90.34	0.05	6,643.9	400.3	115.0	400.3	0.28	0.18	0.21	
9,055.0	89.90	358.76	6,643.7	489.3	114.1	489.3	1.53	-0.49	-1.45	
9,145.0	89.65	358.95	6,644.1	579.3	112.3	579.3	0.35	-0.28	0.21	
9,235.0	89.82	1.07	6,644.5	669.3	112.3	669.3	2.36	0.19	2.36	
9,325.0	89.75	0.70	6,644.8	759.3	113.7	759.3	0.42	-0.08	-0.41	
9,414.0	89.84	359.68	6,645.2	848.3	114.0	848.3	1.15	0.10	-1.15	
9,504.0	89.93	359.69	6,645.3	938.3	113.5	938.3	0.10	0.10	0.01	
9,593.0	89.46	358.72	6,645.8	1,027.3	112.3	1,027.3	1.21	-0.53	-1.09	
9,683.0	89.42	358.70	6,646.7	1,117.3	110.2	1,117.3	0.05	-0.04	-0.02	
9,773.0	89.65	359.17	6,647.4	1,207.2	108.6	1,207.2	0.58	0.26	0.52	
9,862.0	89.86	359.44	6,647.8	1,296.2	107.5	1,296.2	0.38	0.24	0.30	
9,951.0	89.33	358.88	6,648.4	1,385.2	106.2	1,385.2	0.87	-0.60	-0.63	
10,041.0	89.68	359.99	6,649.2	1,475.2	105.3	1,475.2	1.29	0.39	1.23	
10,131.0	89.76	359.21	6,649.6	1,565.2	104.7	1,565.2	0.87	0.09	-0.87	
10,220.0	89.37	358.85	6,650.3	1,654.2	103.1	1,654.2	0.60	-0.44	-0.40	
10,310.0	89.88	0.55	6,650.9	1,744.2	102.7	1,744.2	1.97	0.57	1.89	
10,400.0	90.29	0.59	6,650.8	1,834.2	103.6	1,834.2	0.46	0.46	0.04	
10,490.0	90.67	2.86	6,650.0	1,924.1	106.3	1,924.1	2.56	0.42	2.52	
10,580.0	90.38	2.25	6,649.2	2,014.0	110.3	2,014.0	0.75	-0.32	-0.68	
10,670.0	90.44	1.15	6,648.6	2,104.0	113.0	2,104.0	1.22	0.07	-1.22	
10,759.0	89.95	1.08	6,648.3	2,193.0	114.7	2,193.0	0.56	-0.55	-0.08	
10,850.0	89.98	359.81	6,648.3	2,284.0	115.4	2,284.0	1.40	0.03	-1.40	
10,939.0	90.73	3.20	6,647.8	2,372.9	117.7	2,372.9	3.90	0.84	3.81	
11,029.0	90.82	2.96	6,646.5	2,462.8	122.6	2,462.8	0.28	0.10	-0.27	
11,118.0	90.29	1.73	6,645.7	2,551.7	126.2	2,551.7	1.50	-0.60	-1.38	
11,208.0	89.83	0.65	6,645.6	2,641.7	128.1	2,641.7	1.30	-0.51	-1.20	
11,298.0	90.64	2.61	6,645.2	2,731.6	130.6	2,731.6	2.36	0.90	2.18	
11,387.0	89.81	359.95	6,644.9	2,820.6	132.6	2,820.6	3.13	-0.93	-2.99	
11,476.0	90.61	2.16	6,644.5	2,909.6	134.3	2,909.6	2.64	0.90	2.48	
11,566.0	90.66	1.12	6,643.5	2,999.5	136.8	2,999.5	1.16	0.06	-1.16	
11,656.0	90.63	0.57	6,642.5	3,089.5	138.2	3,089.5	0.61	-0.03	-0.61	
11,746.0	90.31	0.08	6,641.8	3,179.5	138.7	3,179.5	0.65	-0.36	-0.54	
11,835.0	90.55	0.45	6,641.1	3,268.5	139.1	3,268.5	0.50	0.27	0.42	
11,925.0	90.67	2.38	6,640.2	3,358.5	141.3	3,358.5	2.15	0.13	2.14	
12,014.0	90.16	1.10	6,639.5	3,447.4	144.0	3,447.4	1.55	-0.57	-1.44	
12,104.0	89.99	0.23	6,639.4	3,537.4	145.1	3,537.4	0.98	-0.19	-0.97	
12,194.0	90.37	0.91	6,639.1	3,627.4	146.0	3,627.4	0.87	0.42	0.76	
12,283.0	89.71	0.26	6,639.1	3,716.4	146.9	3,716.4	1.04	-0.74	-0.73	

Company:	PDC Energy Inc. DJ Basin	Local Co-ordinate Reference:	Well Erwin 2N (Nio B)
Project:	SEC.27-T5N-R64W	TVD Reference:	WELL @ 4667.0ft (Ensign 142 RKB - 28')
Site:	Erwin 5N64W27 1-6 Pad Sec.27-T5N-R64W	MD Reference:	WELL @ 4667.0ft (Ensign 142 RKB - 28')
Well:	Erwin 2N (Nio B)	North Reference:	True
Wellbore:	Erwin 2N (Nio B) Wellbore #1	Survey Calculation Method:	Minimum Curvature
Design:	Erwin 2N (Nio B) Wellbore #1	Database:	US_EDM

Survey										
Measured Depth (ft)	Inclination (°)	Azimuth (°)	Vertical Depth (ft)	+N/-S (ft)	+E/-W (ft)	Vertical Section (ft)	Dogleg Rate (°/100usft)	Build Rate (°/100usft)	Turn Rate (°/100usft)	
12,374.0	89.81	0.15	6,639.4	3,807.4	147.2	3,807.4	0.16	0.11	-0.12	
12,464.0	89.87	1.13	6,639.7	3,897.4	148.2	3,897.4	1.09	0.07	1.09	
12,554.0	89.76	0.57	6,640.0	3,987.4	149.5	3,987.4	0.63	-0.12	-0.62	
12,733.0	89.45	0.60	6,641.2	4,166.4	151.4	4,166.4	0.17	-0.17	0.02	
12,823.0	90.04	1.43	6,641.6	4,256.4	153.0	4,256.4	1.13	0.66	0.92	
12,913.0	89.68	0.41	6,641.8	4,346.4	154.4	4,346.4	1.20	-0.40	-1.13	
13,003.0	89.76	1.05	6,642.3	4,436.3	155.5	4,436.3	0.72	0.09	0.71	
13,093.0	89.42	0.34	6,642.9	4,526.3	156.6	4,526.3	0.87	-0.38	-0.79	
13,182.0	89.30	359.79	6,643.9	4,615.3	156.7	4,615.3	0.63	-0.13	-0.62	
13,272.0	89.32	0.50	6,645.0	4,705.3	157.0	4,705.3	0.79	0.02	0.79	
13,362.0	89.36	359.80	6,646.0	4,795.3	157.2	4,795.3	0.78	0.04	-0.78	
13,452.0	89.50	0.06	6,646.9	4,885.3	157.1	4,885.3	0.33	0.16	0.29	
13,542.0	89.44	0.03	6,647.8	4,975.3	157.2	4,975.3	0.07	-0.07	-0.03	
13,623.0	89.44	0.03	6,648.5	5,056.3	157.2	5,056.3	0.00	0.00	0.00	

Design Targets										
Target Name - hit/miss target - Shape	Dip Angle (°)	Dip Dir. (°)	TVD (ft)	+N/-S (ft)	+E/-W (ft)	Northing (usft)	Easting (usft)	Latitude	Longitude	
SHL 483'FSL & 2362'FE - survey hits target center - Point	0.00	0.00	1.0	0.0	0.0	1,377,056.66	3,268,944.53	40.364404	-104.534834	
BHL 261'FSL & 2207'FE - survey misses target center by 9.1ft at 13623.0ft MD (6648.5 TVD, 5056.3 N, 157.2 E) - Point	0.00	0.00	6,641.7	5,057.5	151.3	1,382,115.29	3,269,040.79	40.378287	-104.534291	

Survey Annotations					
Measured Depth (ft)	Vertical Depth (ft)	Local Coordinates			
		+N/-S (ft)	+E/-W (ft)	Comment	
7,047.1	6,549.9	-1,502.1	107.0	TPZ – 60° Inc in Curve - 1020'FNL & 2261'FEL, Sec.34	
7,602.3	6,655.7	-963.2	110.1	Deepest TVD Drilled - 6655.8'	

Checked By: _____ Approved By: _____ Date: _____