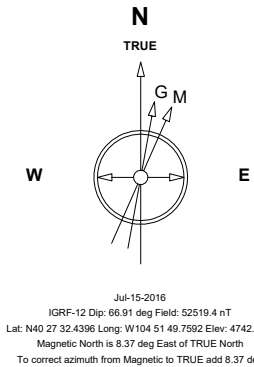


# Great Western Operating Company, LLC

**Location** Colorado  
**Field** Wattenburg  
**Installation** Kodak South

**Slot** Slot E09 - Kodak South FD 28-339HN  
**Well** Kodak South FD 28-339HN  
**Wellbore** Kodak South FD 28-339HN (PWB)

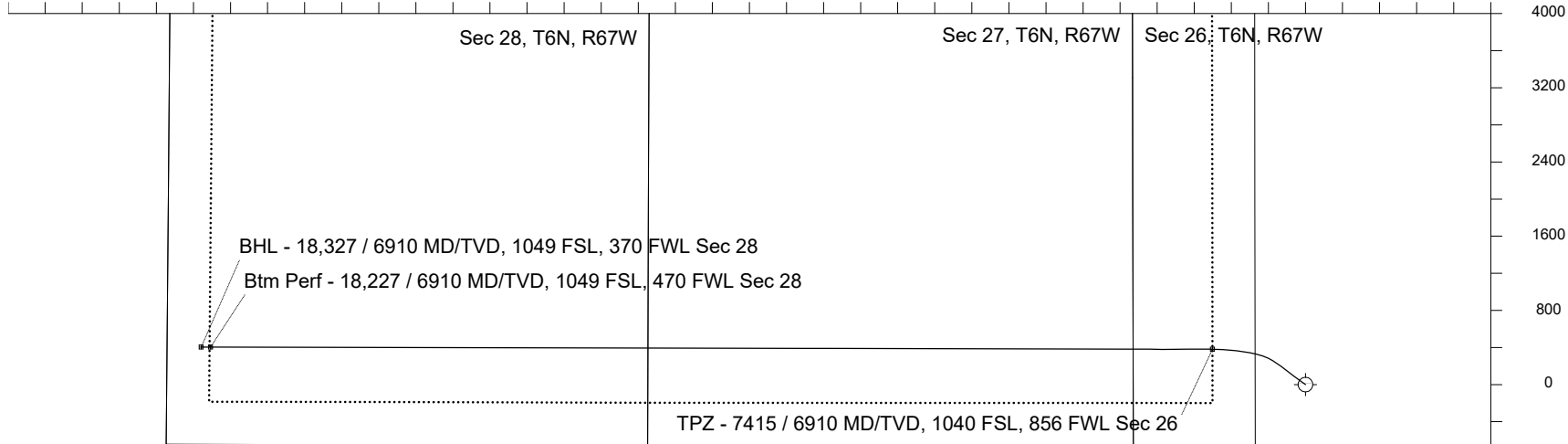
Created by	mmount
Date plotted	12-Nov-2020
Plot reference is Kodak South FD 28-339HN (PWB).	
Ref wellpath is Kodak South FD 28-339HN (PWP#1).	
Coordinates are in Feet reference Slot E09 - Kodak South FD 28-339HN.	
True Vertical Depths are reference Rig Datum.	
Measured Depths are reference Rig Datum.	
Rig Datum: Planned Datum #1	
Rig Datum to Mean Sea Level: 4762.60 ft.	
Plot North is aligned to TRUE North.	



Scale 1 cm = 400 ft

East (Feet) ->

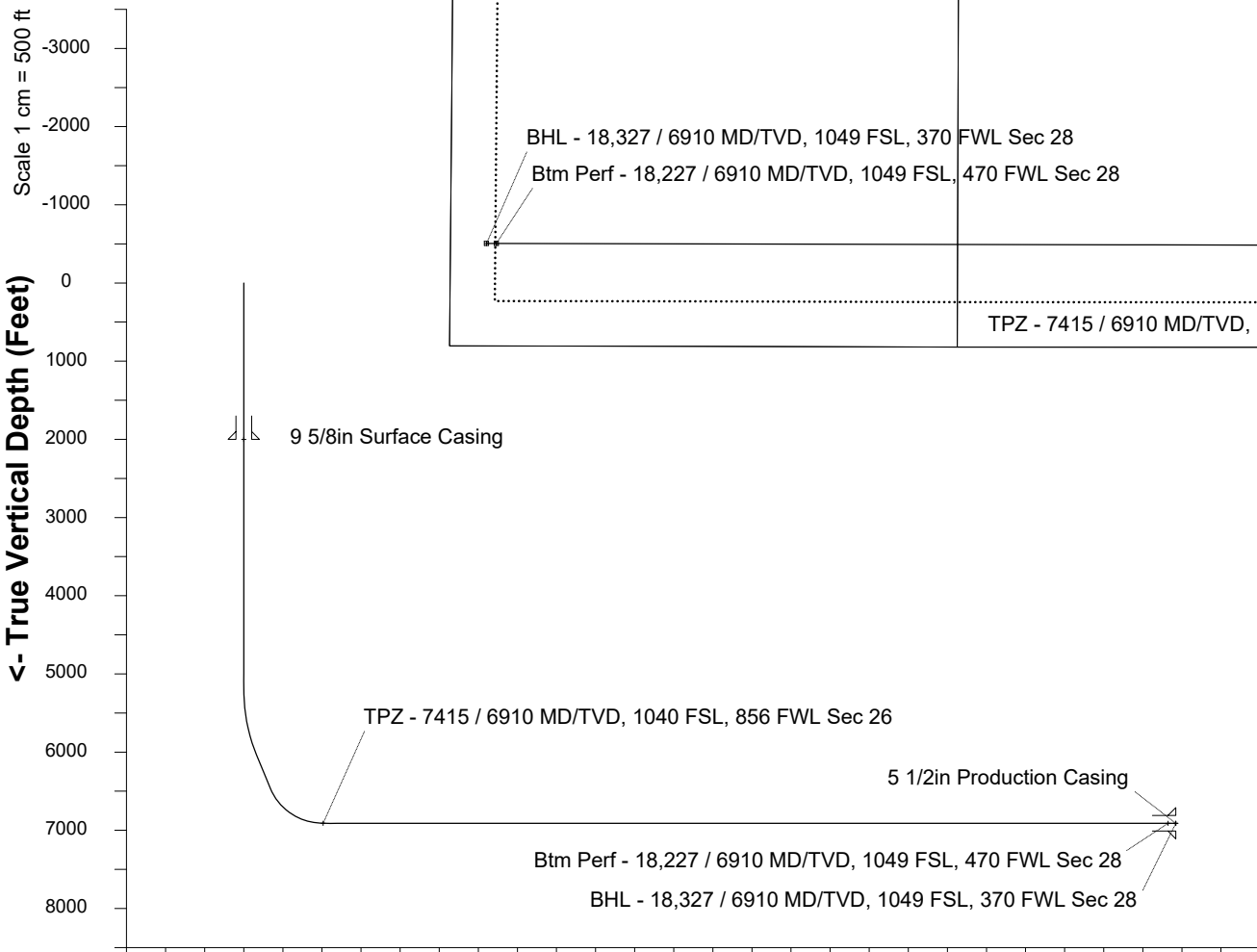
-13600 -12800 -12000 -11200 -10400 -9600 -8800 -8000 -7200 -6400 -5600 -4800 -4000 -3200 -2400 -1600 -800 0 800 1600



<- North(Feet)

Scale 1 cm = 400 ft

<- True Vertical Depth (Feet)



Scale 1 cm = 500 ft

Vertical Section (Feet) ->

Azimuth 271.94 with reference 0.00 N, 0.00 E from Slot E09 - Kodak South FD 28-339HN

## WELL PROFILE DATA

Point	MD	Inc	Azi	TVD	North	East	deg/100ft	V. Sect
Tie on	0.00	0.00	0.00	0.00	S 0.00	W 0.00		0.00
KOP	5190.00	0.00	306.50	5190.00	S 0.00	W 0.00	0.00	0.00
End of Build	6082.16	26.76	306.50	6050.06	N 121.70	W 164.49	3.00	168.52
End of Hold	6555.44	26.76	306.50	6472.64	N 248.46	W 335.83	0.00	344.06
Target TPZ - ...Sec 26	7414.69	90.00	270.12	6910.00	N 380.73	W 1003.00	8.00	1015.33
Target Btm Pe...Sec 28	18227.26	90.00	270.12	6910.00	N 404.30	W 11815.55	0.00	11822.46
End of Turn	18227.92	90.00	270.03	6910.00	N 404.31	W 11816.20	15.00	11823.11
T.D. & Target BHL... 28	18327.17	90.00	270.03	6910.00	N 404.35	W 11915.46	0.00	11922.31

Header Information	measured depth (ft)	inclination (°)	azimuth (°)	true vertical depth (ft)	northing +N/-S (ft)	easting +E/-W (ft)
Operator Name	0	0.00	0.00	0	0.00	0.00
Great Western Oil & Gas Company LLC	100	0.00	0.00	100	0.00	0.00
Operator Number	200	0.00	0.00	200	0.00	0.00
10110	300	0.00	0.00	300	0.00	0.00
Well Name and Number	400	0.00	0.00	400	0.00	0.00
Kodak South FD 28-339HN	500	0.00	0.00	500	0.00	0.00
API Number (if available)	600	0.00	0.00	600	0.00	0.00
05-123-40799	700	0.00	0.00	700	0.00	0.00
Location: QQ SEC TWP RGE	800	0.00	0.00	800	0.00	0.00
SESW 26 6N 67W	900	0.00	0.00	900	0.00	0.00
Citing Type: Planned or Actual	1000	0.00	0.00	1000	0.00	0.00
Planned	1100	0.00	0.00	1100	0.00	0.00
Deviation Indicator	1200	0.00	0.00	1200	0.00	0.00
Horizontal ▼	1300	0.00	0.00	1300	0.00	0.00
North Reference	1400	0.00	0.00	1400	0.00	0.00
True ▼	1500	0.00	0.00	1500	0.00	0.00
Grid Type	1600	0.00	0.00	1600	0.00	0.00
▼	1700	0.00	0.00	1700	0.00	0.00
	1800	0.00	0.00	1800	0.00	0.00
	1900	0.00	0.00	1900	0.00	0.00
	2000	0.00	0.00	2000	0.00	0.00
	2100	0.00	0.00	2100	0.00	0.00
	2200	0.00	0.00	2200	0.00	0.00
	2300	0.00	0.00	2300	0.00	0.00
	2400	0.00	0.00	2400	0.00	0.00
	2500	0.00	0.00	2500	0.00	0.00
	2600	0.00	0.00	2600	0.00	0.00
	2700	0.00	0.00	2700	0.00	0.00
	2800	0.00	0.00	2800	0.00	0.00

2900	0.00	0.00	2900	0.00	0.00
3000	0.00	0.00	3000	0.00	0.00
3100	0.00	0.00	3100	0.00	0.00
3200	0.00	0.00	3200	0.00	0.00
3300	0.00	0.00	3300	0.00	0.00
3400	0.00	0.00	3400	0.00	0.00
3500	0.00	0.00	3500	0.00	0.00
3600	0.00	0.00	3600	0.00	0.00
3700	0.00	0.00	3700	0.00	0.00
3800	0.00	0.00	3800	0.00	0.00
3900	0.00	0.00	3900	0.00	0.00
4000	0.00	0.00	4000	0.00	0.00
4100	0.00	0.00	4100	0.00	0.00
4200	0.00	0.00	4200	0.00	0.00
4300	0.00	0.00	4300	0.00	0.00
4400	0.00	0.00	4400	0.00	0.00
4500	0.00	0.00	4500	0.00	0.00
4600	0.00	0.00	4600	0.00	0.00
4700	0.00	0.00	4700	0.00	0.00
4800	0.00	0.00	4800	0.00	0.00
4900	0.00	0.00	4900	0.00	0.00
5000	0.00	0.00	5000	0.00	0.00
5100	0.00	0.00	5100	0.00	0.00
5200	0.30	306.50	5200	0.02	-0.02
5300	3.30	306.50	5300	1.88	-2.55
5400	6.30	306.50	5400	6.86	-9.27
5500	9.30	306.50	5499	14.93	-20.18
5600	12.30	306.50	5597	26.07	-35.24
5700	15.30	306.50	5694	40.26	-54.42
5800	18.30	306.50	5790	57.45	-77.65
5900	21.30	306.50	5884	77.59	-104.88
6000	24.30	306.50	5976	100.64	-136.03
6100	26.76	306.50	6066	126.48	-170.95
6200	26.76	306.50	6155	153.26	-207.15

6300	26.76	306.50	6245	180.05	-243.35
6400	26.76	306.50	6334	206.83	-279.56
6500	26.76	306.50	6423	233.61	-315.76
6600	29.60	301.90	6512	260.25	-353.24
6700	36.38	294.08	6596	285.44	-401.36
6800	43.53	288.47	6672	308.49	-461.20
6900	50.89	284.20	6740	328.95	-531.59
7000	58.38	280.74	6798	346.42	-611.17
7100	65.95	277.80	6845	360.57	-698.38
7200	73.57	275.19	6879	371.12	-791.53
7300	81.21	272.77	6901	377.86	-888.80
7400	88.87	270.46	6910	380.65	-988.31
7500	90.00	270.12	6910	380.92	-1088.31
7600	90.00	270.12	6910	381.13	-1188.31
7700	90.00	270.12	6910	381.35	-1288.31
7800	90.00	270.12	6910	381.57	-1388.31
7900	90.00	270.12	6910	381.79	-1488.31
8000	90.00	270.12	6910	382.01	-1588.31
8100	90.00	270.12	6910	382.22	-1688.31
8200	90.00	270.12	6910	382.44	-1788.30
8300	90.00	270.12	6910	382.66	-1888.30
8400	90.00	270.12	6910	382.88	-1988.30
8500	90.00	270.12	6910	383.10	-2088.30
8600	90.00	270.12	6910	383.31	-2188.30
8700	90.00	270.12	6910	383.53	-2288.30
8800	90.00	270.12	6910	383.75	-2388.30
8900	90.00	270.12	6910	383.97	-2488.30
9000	90.00	270.12	6910	384.19	-2588.30
9100	90.00	270.12	6910	384.40	-2688.30
9200	90.00	270.12	6910	384.62	-2788.30
9300	90.00	270.12	6910	384.84	-2888.30
9400	90.00	270.12	6910	385.06	-2988.30
9500	90.00	270.12	6910	385.28	-3088.30
9600	90.00	270.12	6910	385.49	-3188.30

9700	90.00	270.12	6910	385.71	-3288.30
9800	90.00	270.12	6910	385.93	-3388.30
9900	90.00	270.12	6910	386.15	-3488.30
10000	90.00	270.12	6910	386.37	-3588.30
10100	90.00	270.12	6910	386.58	-3688.30
10200	90.00	270.12	6910	386.80	-3788.30
10300	90.00	270.12	6910	387.02	-3888.30
10400	90.00	270.12	6910	387.24	-3988.30
10500	90.00	270.12	6910	387.46	-4088.30
10600	90.00	270.12	6910	387.67	-4188.30
10700	90.00	270.12	6910	387.89	-4288.30
10800	90.00	270.12	6910	388.11	-4388.30
10900	90.00	270.12	6910	388.33	-4488.30
11000	90.00	270.12	6910	388.55	-4588.30
11100	90.00	270.12	6910	388.76	-4688.30
11200	90.00	270.12	6910	388.98	-4788.30
11300	90.00	270.12	6910	389.20	-4888.30
11400	90.00	270.12	6910	389.42	-4988.30
11500	90.00	270.12	6910	389.64	-5088.30
11600	90.00	270.12	6910	389.86	-5188.30
11700	90.00	270.12	6910	390.07	-5288.30
11800	90.00	270.12	6910	390.29	-5388.30
11900	90.00	270.12	6910	390.51	-5488.30
12000	90.00	270.12	6910	390.73	-5588.30
12100	90.00	270.12	6910	390.95	-5688.30
12200	90.00	270.12	6910	391.16	-5788.30
12300	90.00	270.12	6910	391.38	-5888.30
12400	90.00	270.12	6910	391.60	-5988.29
12500	90.00	270.12	6910	391.82	-6088.29
12600	90.00	270.12	6910	392.04	-6188.29
12700	90.00	270.12	6910	392.25	-6288.29
12800	90.00	270.12	6910	392.47	-6388.29
12900	90.00	270.12	6910	392.69	-6488.29
13000	90.00	270.12	6910	392.91	-6588.29

13100	90.00	270.12	6910	393.13	-6688.29
13200	90.00	270.12	6910	393.34	-6788.29
13300	90.00	270.12	6910	393.56	-6888.29
13400	90.00	270.12	6910	393.78	-6988.29
13500	90.00	270.12	6910	394.00	-7088.29
13600	90.00	270.12	6910	394.22	-7188.29
13700	90.00	270.12	6910	394.43	-7288.29
13800	90.00	270.12	6910	394.65	-7388.29
13900	90.00	270.12	6910	394.87	-7488.29
14000	90.00	270.12	6910	395.09	-7588.29
14100	90.00	270.12	6910	395.31	-7688.29
14200	90.00	270.12	6910	395.52	-7788.29
14300	90.00	270.12	6910	395.74	-7888.29
14400	90.00	270.12	6910	395.96	-7988.29
14500	90.00	270.12	6910	396.18	-8088.29
14600	90.00	270.12	6910	396.40	-8188.29
14700	90.00	270.12	6910	396.61	-8288.29
14800	90.00	270.12	6910	396.83	-8388.29
14900	90.00	270.12	6910	397.05	-8488.29
15000	90.00	270.12	6910	397.27	-8588.29
15100	90.00	270.12	6910	397.49	-8688.29
15200	90.00	270.12	6910	397.70	-8788.29
15300	90.00	270.12	6910	397.92	-8888.29
15400	90.00	270.12	6910	398.14	-8988.29
15500	90.00	270.12	6910	398.36	-9088.29
15600	90.00	270.12	6910	398.58	-9188.29
15700	90.00	270.12	6910	398.79	-9288.29
15800	90.00	270.12	6910	399.01	-9388.29
15900	90.00	270.12	6910	399.23	-9488.29
16000	90.00	270.12	6910	399.45	-9588.29
16100	90.00	270.12	6910	399.67	-9688.29
16200	90.00	270.12	6910	399.88	-9788.29
16300	90.00	270.12	6910	400.10	-9888.29
16400	90.00	270.12	6910	400.32	-9988.29

[illegible]