

T6N, R67W, 6th P.M.

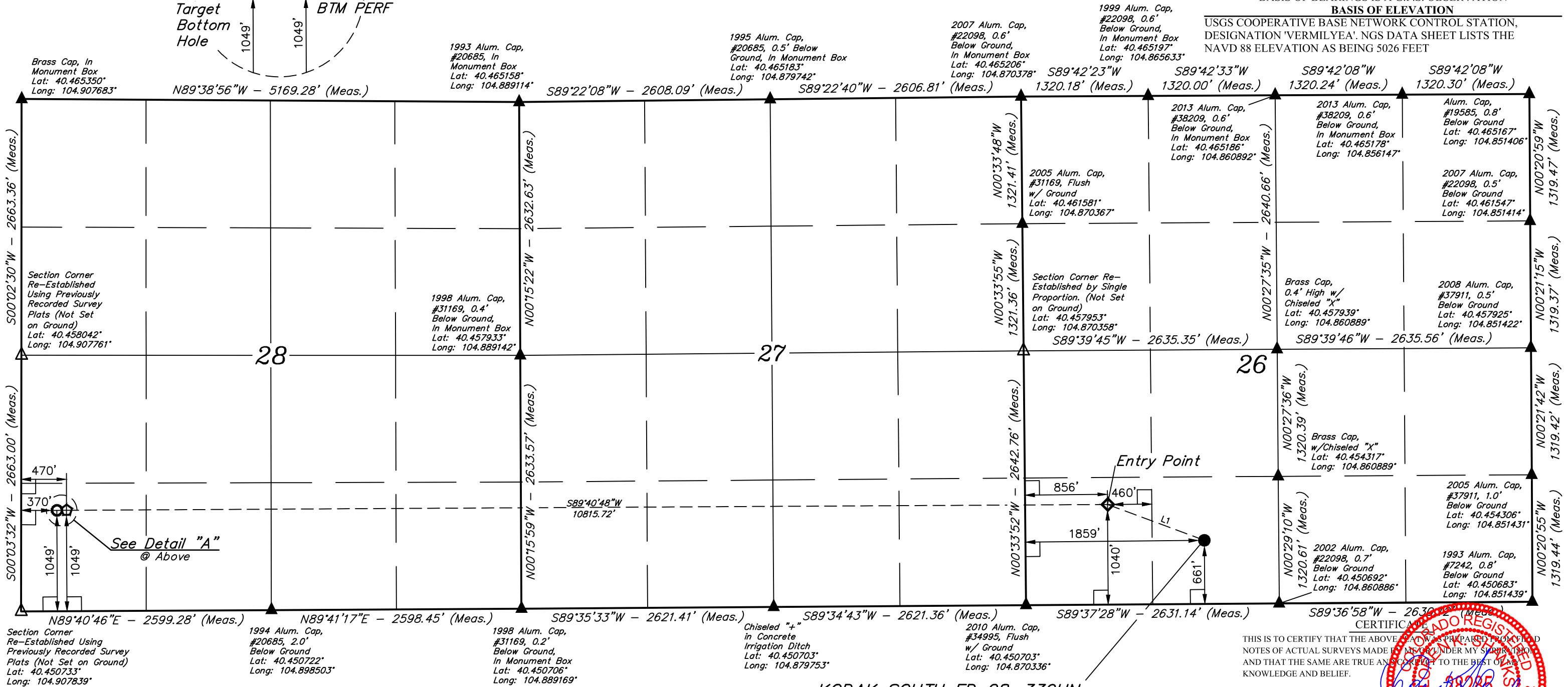
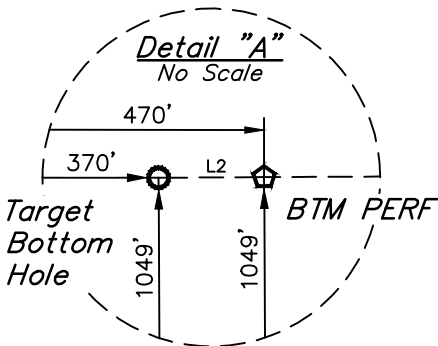
GREAT WESTERN OPERATING COMPANY

KODAK SOUTH FD 28-339HN  
SE 1/4 SW 1/4, SECTION 26, T6N, R67W, 6th P.M.  
WELD COUNTY, COLORADO

BASIS OF BEARINGS

BASIS OF ELEVATION

USGS COOPERATIVE BASE NETWORK CONTROL STATION,  
DESIGNATION 'VERMILYEA'. NGS DATA SHEET LISTS THE  
NAVD 88 ELEVATION AS BEING 5026 FEET



KODAK SOUTH FD 28-339HN  
Elev. Ungraded Ground = 4743.2'

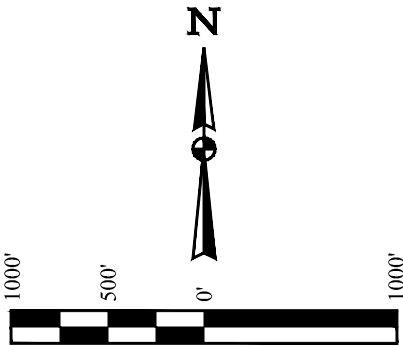
THIS IS TO CERTIFY THAT THE ABOVE PLAT WAS PREPARED FROM FIELD NOTES OF ACTUAL SURVEYS MADE BY ME OR UNDER MY SUPERVISION AND THAT THE SAME ARE TRUE AND CORRECT TO THE BEST OF MY KNOWLEDGE AND BELIEF.

REGISTERED LAND SURVEYOR  
REGISTRATION NO. 28285  
STATE OF COLORADO  
JUL 15 2020

REV: 16 10-15-20 J.J. (ENTRY POINT MOVE)

LEGEND:

- 90° SYMBOL
- PROPOSED WELLHEAD.
- ENTRY POINT.
- BTM PERF.
- TARGET BOTTOM HOLE.
- SECTION CORNERS LOCATED. (NAD 83)
- SECTION CORNERS RE-ESTABLISHED. (Not Set on Ground.) (NAD 83)



LINE TABLE		
LINE	DIRECTION	LENGTH
L1	N69°41'40"W	1073.14'
L2	S89°40'46"W	100.00'

PDOP = 1.2

NAD 83 (SURFACE LOCATION)	NAD 83 (ENTRY POINT)	NAD 83 (BTM PERF)	NAD 83 (TARGET BOTTOM HOLE)
LATITUDE = 40°27'09.03" (40.452508)	LATITUDE = 40°27'12.79" (40.453553)	LATITUDE = 40°27'13.00" (40.453610)	LATITUDE = 40°27'13.00" (40.453610)
LONGITUDE = 104°51'49.19" (104.863664)	LONGITUDE = 104°52'02.17" (104.867268)	LONGITUDE = 104°54'22.03" (104.906120)	LONGITUDE = 104°54'23.33" (104.906479)
NAD 27 (SURFACE LOCATION)	NAD 27 (ENTRY POINT)	NAD 27 (BTM PERF)	NAD 27 (TARGET BOTTOM HOLE)
LATITUDE = 40°27'09.10" (40.452528)	LATITUDE = 40°27'12.86" (40.453571)	LATITUDE = 40°27'13.06" (40.453628)	LATITUDE = 40°27'13.06" (40.453628)
LONGITUDE = 104°51'47.29" (104.863136)	LONGITUDE = 104°52'00.27" (104.866741)	LONGITUDE = 104°54'20.13" (104.905591)	LONGITUDE = 104°54'21.42" (104.905951)



UELS, LLC  
Corporate Office \* 85 South 200 East  
Vernal, UT 84078 \* (435) 789-1017

SURVEYED BY	ZANE BULLARD, J.C.	06-29-16	SCALE
DRAWN BY	K.B.	07-05-16	1" = 1000'

WELL LOCATION PLAT