

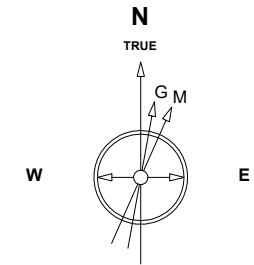
Great Western Operating Company, LLC

Location Colorado
Field Wattenburg
Installation Kodak South

Slot Slot E10 - Kodak South FD 28-339HC
Well Kodak South FD 28-339HC
Wellbore Kodak South FD 28-339HC (PWB)

Created by mmount
Date plotted 12-Nov-2020

Plot reference is Kodak South FD 28-339HC (PWB).
Ref wellpath is Kodak South FD 28-339HC (PWP#1).
Coordinates are in Feet reference Slot E10 - Kodak South FD 28-339HC.
True Vertical Depths are reference Rig Datum.
Measured Depths are reference Rig Datum.
Rig Datum: Planned Datum #1
Rig Datum to Mean Sea Level: 4762.60 ft.
Plot North is aligned to TRUE North.

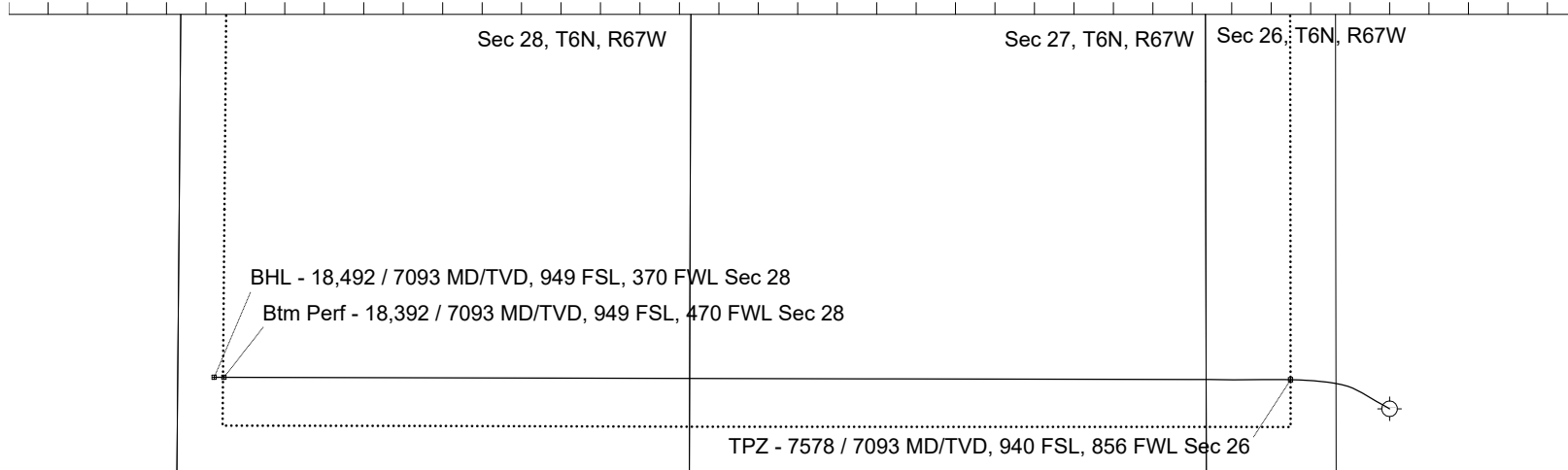


Scale 1 cm = 400 ft

East (Feet) ->

-13600 -12800 -12000 -11200 -10400 -9600 -8800 -8000 -7200 -6400 -5600 -4800 -4000 -3200 -2400 -1600 -800 0 800 1600

Jul-15-2016
IGRF-12 Dip: 66.91 deg Field: 52519.4 nT
Lat: N40 27 32.4396 Long: W104 51 49.7592 Elev: 4742.60 ft
Magnetic North is 8.37 deg East of TRUE North
To correct azimuth from Magnetic to TRUE add 8.37 deg



4000

3200

2400

1600

800

0

-800

-1600

-2400

-3200

-4000

<- North(Feet)

Scale 1 cm = 400 ft

<- True Vertical Depth (Feet)

Scale 1 cm = 500 ft

3000
2000
1000
0
-1000
-2000
-3000

9 5/8in Surface Casing

TPZ - 7578 / 7093 MD/TVD, 940 FSL, 856 FWL Sec 26

5 1/2in Production Casing

Btm Perf - 18,392 / 7093 MD/TVD, 949 FSL, 470 FWL Sec 28

BHL - 18,492 / 7093 MD/TVD, 949 FSL, 370 FWL Sec 28

Scale 1 cm = 500 ft

Vertical Section (Feet) ->

Azimuth 271.53 with reference 0.00 N, 0.00 E from Slot E10 - Kodak South FD 28-339HC

-1000 0 1000 2000 3000 4000 5000 6000 7000 8000 9000 10000 11000 12000 13000

WELL PROFILE DATA

Point	MD	Inc	Azi	TVD	North	East	deg/100ft	V. Sect
Tie on	0.00	0.00	0.00	0.00	S 0.00	W 0.00		0.00
KOP	5385.00	0.00	299.83	5385.00	S 0.00	W 0.00	0.00	0.00
End of Build	6203.47	24.55	299.83	6178.65	N 85.90	W 149.83	3.00	152.08
End of Hold	6717.97	24.55	299.83	6646.62	N 192.24	W 335.32	0.00	340.34
Target TPZ - ...Sec 26	7578.47	90.00	270.13	7093.00	N 294.75	W 1003.00	8.00	1010.52
Target Btm Pe...Sec 28	18391.93	90.00	270.13	7093.00	N 318.69	W 11816.43	0.00	11820.72
End of Turn	18392.59	90.00	270.03	7093.00	N 318.69	W 11817.09	15.00	11821.39
T.D. & Target BHL... 28	18491.84	90.00	270.03	7093.00	N 318.74	W 11916.34	0.00	11920.60

Header Information	measured depth (ft)	inclination (°)	azimuth (°)	true vertical depth (ft)	northing +N/-S (ft)	easting +E/-W (ft)
Operator Name	0	0.00	0.00	0	0.00	0.00
Great Western Oil & Gas Company LLC	100	0.00	0.00	100	0.00	0.00
Operator Number	200	0.00	0.00	200	0.00	0.00
10110	300	0.00	0.00	300	0.00	0.00
Well Name and Number	400	0.00	0.00	400	0.00	0.00
Kodak South FD 28-339HC	500	0.00	0.00	500	0.00	0.00
API Number (if available)	600	0.00	0.00	600	0.00	0.00
05-123-40805	700	0.00	0.00	700	0.00	0.00
Location: QQ SEC TWP RGE	800	0.00	0.00	800	0.00	0.00
SESW 26 6N 67W	900	0.00	0.00	900	0.00	0.00
Citing Type: Planned or Actual	1000	0.00	0.00	1000	0.00	0.00
Planned	1100	0.00	0.00	1100	0.00	0.00
Deviation Indicator	1200	0.00	0.00	1200	0.00	0.00
Horizontal ▼	1300	0.00	0.00	1300	0.00	0.00
North Reference	1400	0.00	0.00	1400	0.00	0.00
True ▼	1500	0.00	0.00	1500	0.00	0.00
Grid Type	1600	0.00	0.00	1600	0.00	0.00
▼	1700	0.00	0.00	1700	0.00	0.00
	1800	0.00	0.00	1800	0.00	0.00
	1900	0.00	0.00	1900	0.00	0.00
	2000	0.00	0.00	2000	0.00	0.00
	2100	0.00	0.00	2100	0.00	0.00
	2200	0.00	0.00	2200	0.00	0.00
	2300	0.00	0.00	2300	0.00	0.00
	2400	0.00	0.00	2400	0.00	0.00
	2500	0.00	0.00	2500	0.00	0.00
	2600	0.00	0.00	2600	0.00	0.00
	2700	0.00	0.00	2700	0.00	0.00
	2800	0.00	0.00	2800	0.00	0.00

2900	0.00	0.00	2900	0.00	0.00
3000	0.00	0.00	3000	0.00	0.00
3100	0.00	0.00	3100	0.00	0.00
3200	0.00	0.00	3200	0.00	0.00
3300	0.00	0.00	3300	0.00	0.00
3400	0.00	0.00	3400	0.00	0.00
3500	0.00	0.00	3500	0.00	0.00
3600	0.00	0.00	3600	0.00	0.00
3700	0.00	0.00	3700	0.00	0.00
3800	0.00	0.00	3800	0.00	0.00
3900	0.00	0.00	3900	0.00	0.00
4000	0.00	0.00	4000	0.00	0.00
4100	0.00	0.00	4100	0.00	0.00
4200	0.00	0.00	4200	0.00	0.00
4300	0.00	0.00	4300	0.00	0.00
4400	0.00	0.00	4400	0.00	0.00
4500	0.00	0.00	4500	0.00	0.00
4600	0.00	0.00	4600	0.00	0.00
4700	0.00	0.00	4700	0.00	0.00
4800	0.00	0.00	4800	0.00	0.00
4900	0.00	0.00	4900	0.00	0.00
5000	0.00	0.00	5000	0.00	0.00
5100	0.00	0.00	5100	0.00	0.00
5200	0.00	0.00	5200	0.00	0.00
5300	0.00	0.00	5300	0.00	0.00
5400	0.45	299.83	5400	0.03	-0.05
5500	3.45	299.83	5500	1.72	-3.00
5600	6.45	299.83	5600	6.01	-10.49
5700	9.45	299.83	5699	12.89	-22.49
5800	12.45	299.83	5797	22.34	-38.96
5900	15.45	299.83	5894	34.33	-59.87
6000	18.45	299.83	5989	48.82	-85.16
6100	21.45	299.83	6083	65.79	-114.76
6200	24.45	299.83	6175	85.18	-148.59

6300	24.55	299.83	6266	105.85	-184.63
6400	24.55	299.83	6357	126.52	-220.69
6500	24.55	299.83	6448	147.19	-256.74
6600	24.55	299.83	6539	167.85	-292.79
6700	24.55	299.83	6630	188.52	-328.84
6800	30.30	292.91	6719	208.79	-369.20
6900	37.64	287.19	6802	227.67	-421.70
7000	45.18	283.13	6877	244.77	-485.51
7100	52.83	280.01	6943	259.78	-559.41
7200	60.54	277.47	6998	272.38	-641.95
7300	68.30	275.29	7041	282.35	-731.52
7400	76.08	273.34	7071	289.48	-826.38
7500	83.88	271.52	7089	293.63	-924.69
7600	90.00	270.13	7093	294.80	-1024.53
7700	90.00	270.13	7093	295.02	-1124.53
7800	90.00	270.13	7093	295.24	-1224.53
7900	90.00	270.13	7093	295.46	-1324.53
8000	90.00	270.13	7093	295.68	-1424.53
8100	90.00	270.13	7093	295.91	-1524.53
8200	90.00	270.13	7093	296.13	-1624.53
8300	90.00	270.13	7093	296.35	-1724.53
8400	90.00	270.13	7093	296.57	-1824.53
8500	90.00	270.13	7093	296.79	-1924.53
8600	90.00	270.13	7093	297.01	-2024.52
8700	90.00	270.13	7093	297.23	-2124.52
8800	90.00	270.13	7093	297.46	-2224.52
8900	90.00	270.13	7093	297.68	-2324.52
9000	90.00	270.13	7093	297.90	-2424.52
9100	90.00	270.13	7093	298.12	-2524.52
9200	90.00	270.13	7093	298.34	-2624.52
9300	90.00	270.13	7093	298.56	-2724.52
9400	90.00	270.13	7093	298.78	-2824.52
9500	90.00	270.13	7093	299.01	-2924.52
9600	90.00	270.13	7093	299.23	-3024.52

9700	90.00	270.13	7093	299.45	-3124.52
9800	90.00	270.13	7093	299.67	-3224.52
9900	90.00	270.13	7093	299.89	-3324.52
10000	90.00	270.13	7093	300.11	-3424.52
10100	90.00	270.13	7093	300.33	-3524.52
10200	90.00	270.13	7093	300.56	-3624.52
10300	90.00	270.13	7093	300.78	-3724.52
10400	90.00	270.13	7093	301.00	-3824.52
10500	90.00	270.13	7093	301.22	-3924.52
10600	90.00	270.13	7093	301.44	-4024.52
10700	90.00	270.13	7093	301.66	-4124.52
10800	90.00	270.13	7093	301.88	-4224.52
10900	90.00	270.13	7093	302.10	-4324.52
11000	90.00	270.13	7093	302.33	-4424.52
11100	90.00	270.13	7093	302.55	-4524.52
11200	90.00	270.13	7093	302.77	-4624.52
11300	90.00	270.13	7093	302.99	-4724.52
11400	90.00	270.13	7093	303.21	-4824.52
11500	90.00	270.13	7093	303.43	-4924.52
11600	90.00	270.13	7093	303.65	-5024.52
11700	90.00	270.13	7093	303.88	-5124.52
11800	90.00	270.13	7093	304.10	-5224.52
11900	90.00	270.13	7093	304.32	-5324.52
12000	90.00	270.13	7093	304.54	-5424.52
12100	90.00	270.13	7093	304.76	-5524.52
12200	90.00	270.13	7093	304.98	-5624.52
12300	90.00	270.13	7093	305.20	-5724.52
12400	90.00	270.13	7093	305.43	-5824.52
12500	90.00	270.13	7093	305.65	-5924.52
12600	90.00	270.13	7093	305.87	-6024.52
12700	90.00	270.13	7093	306.09	-6124.51
12800	90.00	270.13	7093	306.31	-6224.51
12900	90.00	270.13	7093	306.53	-6324.51
13000	90.00	270.13	7093	306.75	-6424.51

13100	90.00	270.13	7093	306.98	-6524.51
13200	90.00	270.13	7093	307.20	-6624.51
13300	90.00	270.13	7093	307.42	-6724.51
13400	90.00	270.13	7093	307.64	-6824.51
13500	90.00	270.13	7093	307.86	-6924.51
13600	90.00	270.13	7093	308.08	-7024.51
13700	90.00	270.13	7093	308.30	-7124.51
13800	90.00	270.13	7093	308.52	-7224.51
13900	90.00	270.13	7093	308.75	-7324.51
14000	90.00	270.13	7093	308.97	-7424.51
14100	90.00	270.13	7093	309.19	-7524.51
14200	90.00	270.13	7093	309.41	-7624.51
14300	90.00	270.13	7093	309.63	-7724.51
14400	90.00	270.13	7093	309.85	-7824.51
14500	90.00	270.13	7093	310.07	-7924.51
14600	90.00	270.13	7093	310.30	-8024.51
14700	90.00	270.13	7093	310.52	-8124.51
14800	90.00	270.13	7093	310.74	-8224.51
14900	90.00	270.13	7093	310.96	-8324.51
15000	90.00	270.13	7093	311.18	-8424.51
15100	90.00	270.13	7093	311.40	-8524.51
15200	90.00	270.13	7093	311.62	-8624.51
15300	90.00	270.13	7093	311.85	-8724.51
15400	90.00	270.13	7093	312.07	-8824.51
15500	90.00	270.13	7093	312.29	-8924.51
15600	90.00	270.13	7093	312.51	-9024.51
15700	90.00	270.13	7093	312.73	-9124.51
15800	90.00	270.13	7093	312.95	-9224.51
15900	90.00	270.13	7093	313.17	-9324.51
16000	90.00	270.13	7093	313.40	-9424.51
16100	90.00	270.13	7093	313.62	-9524.51
16200	90.00	270.13	7093	313.84	-9624.51
16300	90.00	270.13	7093	314.06	-9724.51
16400	90.00	270.13	7093	314.28	-9824.51

[illegible]