

T6N, R67W, 6th P.M.

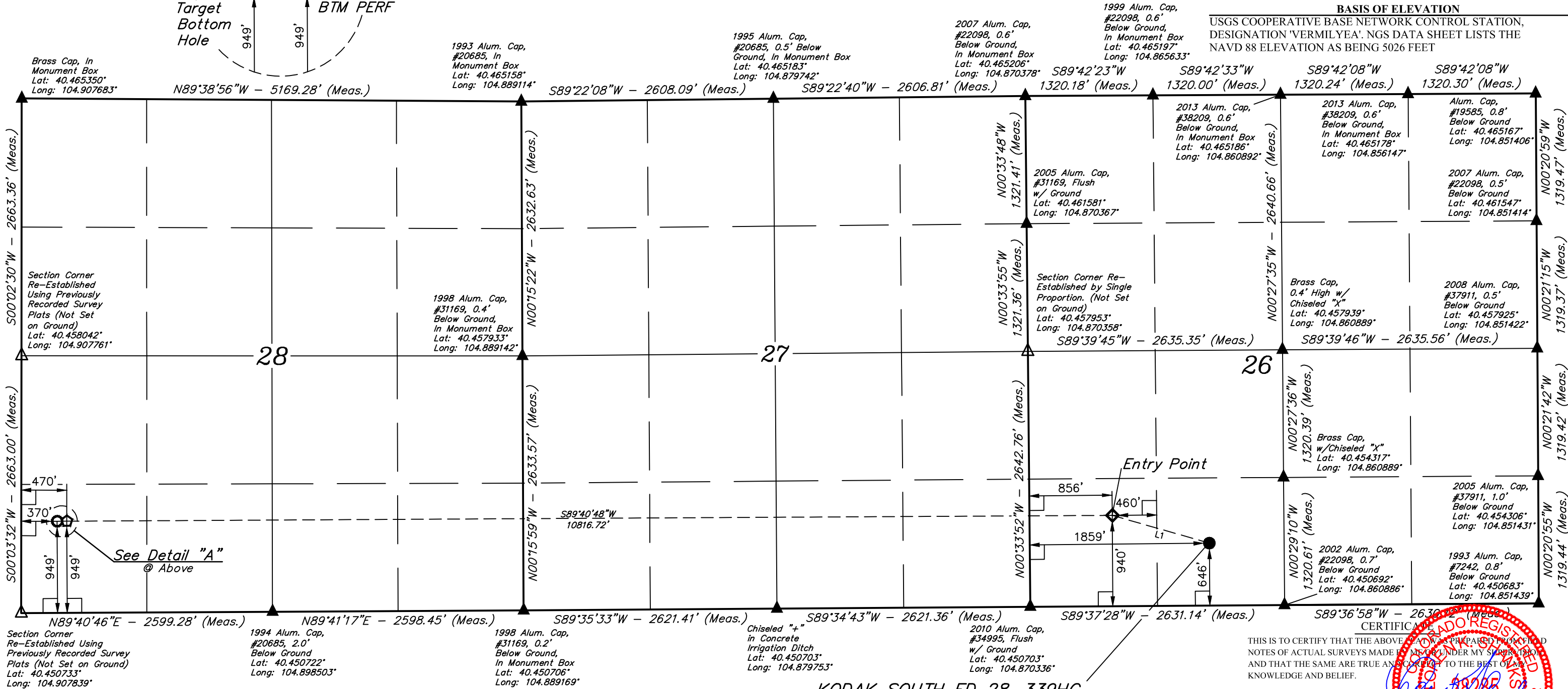
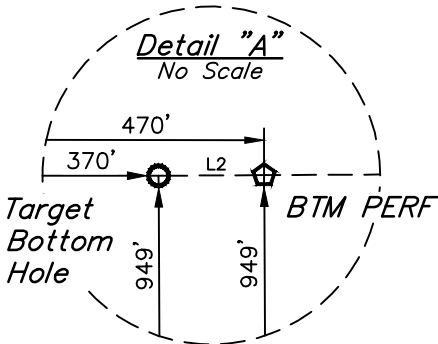
GREAT WESTERN OPERATING COMPANY

KODAK SOUTH FD 28-339HC
SE 1/4 SW 1/4, SECTION 26, T6N, R67W, 6th P.M.
WELD COUNTY, COLORADO

BASIS OF BEARINGS

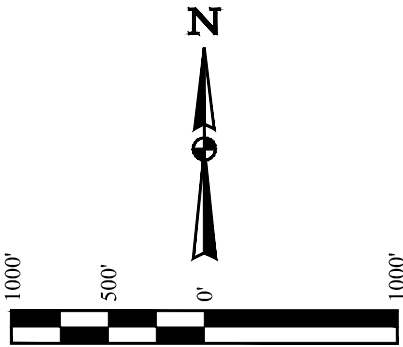
BASIS OF ELEVATION

USGS COOPERATIVE BASE NETWORK CONTROL STATION,
DESIGNATION 'VERMILYEA'. NGS DATA SHEET LISTS THE
NAVD 88 ELEVATION AS BEING 5026 FEET



LEGEND:

- 90° SYMBOL
- PROPOSED WELLHEAD.
- ENTRY POINT.
- BTM PERF.
- TARGET BOTTOM HOLE.
- SECTION CORNERS LOCATED. (NAD 83)
- SECTION CORNERS RE-ESTABLISHED. (Not Set on Ground.) (NAD 83)



LINE TABLE		
LINE	DIRECTION	LENGTH
L1	N74°02'55"W	1045.81'
L2	S89°40'46"W	100.00'

NAD 83 (SURFACE LOCATION)	NAD 83 (ENTRY POINT)	NAD 83 (BTM PERF)	NAD 83 (TARGET BOTTOM HOLE)
LATITUDE = 40°27'08.89" (40.452469)	LATITUDE = 40°27'11.80" (40.453278)	LATITUDE = 40°27'12.01" (40.453336)	LATITUDE = 40°27'12.01" (40.453336)
LONGITUDE = 104°51'49.19" (104.863664)	LONGITUDE = 104°52'02.16" (104.867268)	LONGITUDE = 104°54'22.04" (104.906123)	LONGITUDE = 104°54'23.34" (104.906482)
NAD 27 (SURFACE LOCATION)	NAD 27 (ENTRY POINT)	NAD 27 (BTM PERF)	NAD 27 (TARGET BOTTOM HOLE)
LATITUDE = 40°27'08.95" (40.452486)	LATITUDE = 40°27'11.87" (40.453297)	LATITUDE = 40°27'12.07" (40.453354)	LATITUDE = 40°27'12.07" (40.453354)
LONGITUDE = 104°51'47.29" (104.863136)	LONGITUDE = 104°52'00.27" (104.866740)	LONGITUDE = 104°54'20.14" (104.905594)	LONGITUDE = 104°54'21.43" (104.905954)

PDOP = 1.2



UELS, LLC
Corporate Office * 85 South 200 East
Vernal, UT 84078 * (435) 789-1017

SURVEYED BY	ZANE BULLARD, J.C.	06-29-16	SCALE
DRAWN BY	K.B.	07-05-16	1" = 1000'

WELL LOCATION PLAT

THIS IS TO CERTIFY THAT THE ABOVE PLAT WAS PREPARED FROM FIELD NOTES OF ACTUAL SURVEYS MADE BY ME OR UNDER MY SUPERVISION AND THAT THE SAME ARE TRUE AND CORRECT TO THE BEST OF MY KNOWLEDGE AND BELIEF.

REGISTERED LAND SURVEYOR
REGISTRATION NO. 28285
STATE OF COLORADO

REV: 16 10-15-20 J.J. (ENTRY POINT MOVE)