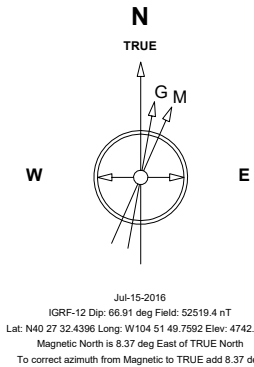


Great Western Operating Company, LLC

Location Colorado
Field Wattenburg
Installation Kodak South

Slot Slot E07 - Kodak South FD 28-302HNX
Well Kodak South FD 28-302HNX
Wellbore Kodak South FD 28-302HNX (PWB)

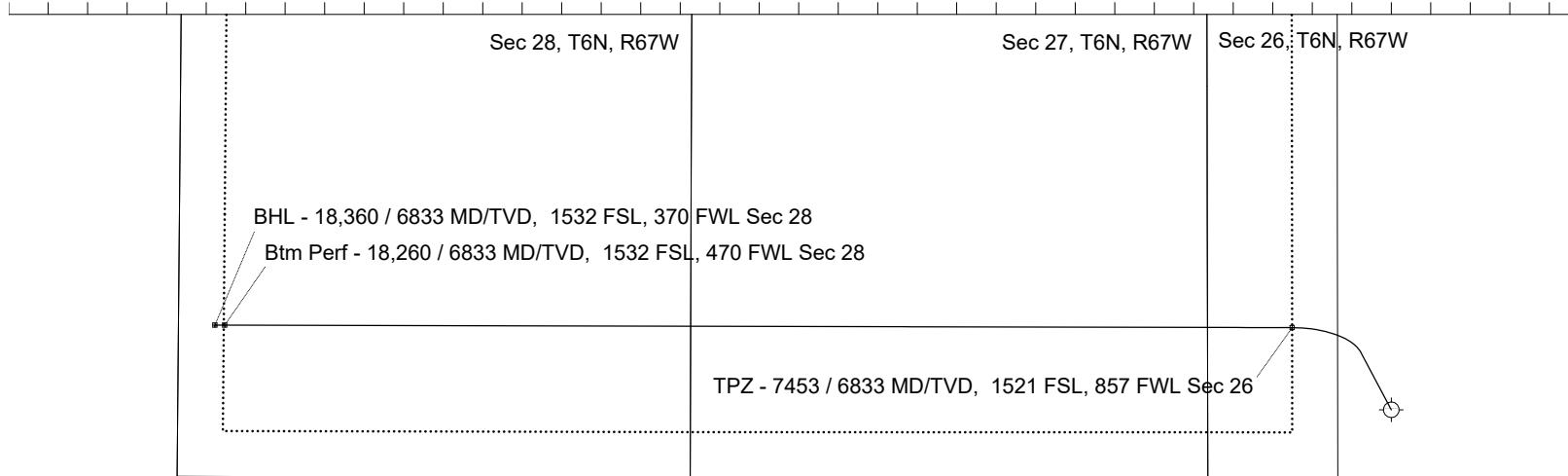
Created by	mmount
Date plotted	12-Nov-2020
Plot reference is Kodak South FD 28-302HNX (PWB).	
Ref wellpath is Kodak South FD 28-302HNX (PWP#1).	
Coordinates are in Feet reference Slot E07 - Kodak South FD 28-302HNX.	
True Vertical Depths are reference Rig Datum.	
Measured Depths are reference Rig Datum.	
Rig Datum: Planned Datum #1	
Rig Datum to Mean Sea Level: 4762.60 ft.	
Plot North is aligned to TRUE North.	



Scale 1 cm = 400 ft

East (Feet) ->

-13600 -12800 -12000 -11200 -10400 -9600 -8800 -8000 -7200 -6400 -5600 -4800 -4000 -3200 -2400 -1600 -800 0 800 1600



4000

3200

2400

1600

800

0

-800

-1600

-2400

-3200

-4000

<- North(Feet)

Scale 1 cm = 400 ft

<- True Vertical Depth (Feet)

Scale 1 cm = 500 ft

3000
2000
1000
0
-1000
-2000
-3000

9 5/8in Surface Casing

TPZ - 7453 / 6833 MD/TVD, 1521 FSL, 857 FWL Sec 26

5 1/2in Production Casing

Btm Perf - 18,260 / 6833 MD/TVD, 1532 FSL, 470 FWL Sec 28

BHL - 18,360 / 6833 MD/TVD, 1532 FSL, 370 FWL Sec 28

-1000 0 1000 2000 3000 4000 5000 6000 7000 8000 9000 10000 11000 12000 13000

Scale 1 cm = 500 ft

Vertical Section (Feet) ->

Azimuth 274.11 with reference 0.00 N, 0.00 E from Slot E07 - Kodak South FD 28-302HNX

WELL PROFILE DATA

Point	MD	Inc	Azi	TVD	North	East	deg/100ft	V. Sect
Tie on	0.00	0.00	0.00	0.00	S 0.00	W 0.00		0.00
KOP	4694.30	0.00	332.04	4694.30	S 0.00	W 0.00	0.00	0.00
End of Build	5694.33	30.00	332.04	5649.25	N 226.02	W 119.97	3.00	135.88
End of Hold	6497.82	30.00	332.04	6345.09	N 580.88	W 308.34	0.00	349.22
Target TPZ - ...Sec 26	7452.57	90.00	270.13	6833.00	N 831.02	W 1003.81	8.00	1060.85
Target Btm Pe...Sec 28	18260.21	90.00	270.13	6833.00	N 856.42	W 11811.42	0.00	11842.42
End of Turn	18260.89	90.00	270.24	6833.00	N 856.42	W 11812.10	15.00	11843.10
T.D. & Target BHL... 28	18360.12	90.00	270.24	6833.00	N 856.83	W 11911.33	0.00	11942.10

Header Information	measured depth (ft)	inclination (°)	azimuth (°)	true vertical depth (ft)	northing +N/-S (ft)	easting +E/-W (ft)
Operator Name	0	0.00	0.00	0	0.00	0.00
Great Western Oil & Gas Company LLC	100	0.00	0.00	100	0.00	0.00
Operator Number	200	0.00	0.00	200	0.00	0.00
10110	300	0.00	0.00	300	0.00	0.00
Well Name and Number	400	0.00	0.00	400	0.00	0.00
Kodak South FD 28-302HNX	500	0.00	0.00	500	0.00	0.00
API Number (if available)	600	0.00	0.00	600	0.00	0.00
05-123-40803	700	0.00	0.00	700	0.00	0.00
Location: QQ SEC TWP RGE	800	0.00	0.00	800	0.00	0.00
SESW 26 6N 67W	900	0.00	0.00	900	0.00	0.00
Citing Type: Planned or Actual	1000	0.00	0.00	1000	0.00	0.00
Planned	1100	0.00	0.00	1100	0.00	0.00
Deviation Indicator	1200	0.00	0.00	1200	0.00	0.00
Horizontal ▼	1300	0.00	0.00	1300	0.00	0.00
North Reference	1400	0.00	0.00	1400	0.00	0.00
True ▼	1500	0.00	0.00	1500	0.00	0.00
Grid Type	1600	0.00	0.00	1600	0.00	0.00
▼	1700	0.00	0.00	1700	0.00	0.00
	1800	0.00	0.00	1800	0.00	0.00
	1900	0.00	0.00	1900	0.00	0.00
	2000	0.00	0.00	2000	0.00	0.00
	2100	0.00	0.00	2100	0.00	0.00
	2200	0.00	0.00	2200	0.00	0.00
	2300	0.00	0.00	2300	0.00	0.00
	2400	0.00	0.00	2400	0.00	0.00
	2500	0.00	0.00	2500	0.00	0.00
	2600	0.00	0.00	2600	0.00	0.00
	2700	0.00	0.00	2700	0.00	0.00
	2800	0.00	0.00	2800	0.00	0.00

2900	0.00	0.00	2900	0.00	0.00
3000	0.00	0.00	3000	0.00	0.00
3100	0.00	0.00	3100	0.00	0.00
3200	0.00	0.00	3200	0.00	0.00
3300	0.00	0.00	3300	0.00	0.00
3400	0.00	0.00	3400	0.00	0.00
3500	0.00	0.00	3500	0.00	0.00
3600	0.00	0.00	3600	0.00	0.00
3700	0.00	0.00	3700	0.00	0.00
3800	0.00	0.00	3800	0.00	0.00
3900	0.00	0.00	3900	0.00	0.00
4000	0.00	0.00	4000	0.00	0.00
4100	0.00	0.00	4100	0.00	0.00
4200	0.00	0.00	4200	0.00	0.00
4300	0.00	0.00	4300	0.00	0.00
4400	0.00	0.00	4400	0.00	0.00
4500	0.00	0.00	4500	0.00	0.00
4600	0.00	0.00	4600	0.00	0.00
4700	0.17	332.04	4700	0.01	0.00
4800	3.17	332.04	4800	2.58	-1.37
4900	6.17	332.04	4900	9.77	-5.19
5000	9.17	332.04	4999	21.56	-11.45
5100	12.17	332.04	5097	37.92	-20.13
5200	15.17	332.04	5194	58.79	-31.21
5300	18.17	332.04	5290	84.13	-44.66
5400	21.17	332.04	5384	113.86	-60.44
5500	24.17	332.04	5476	147.90	-78.51
5600	27.17	332.04	5566	186.16	-98.82
5700	30.00	332.04	5654	228.52	-121.30
5800	30.00	332.04	5741	272.69	-144.75
5900	30.00	332.04	5827	316.85	-168.19
6000	30.00	332.04	5914	361.02	-191.63
6100	30.00	332.04	6001	405.18	-215.08
6200	30.00	332.04	6087	449.35	-238.52

6300	30.00	332.04	6174	493.51	-261.96
6400	30.00	332.04	6260	537.68	-285.41
6500	30.07	331.72	6347	581.84	-308.86
6600	34.17	318.75	6432	625.09	-339.29
6700	39.35	308.54	6512	666.03	-382.67
6800	45.24	300.47	6586	703.84	-438.16
6900	51.59	293.95	6652	737.81	-504.67
7000	58.24	288.51	6710	767.26	-580.91
7100	65.09	283.82	6757	791.63	-665.40
7200	72.07	279.62	6794	810.44	-756.49
7300	79.14	275.74	6819	823.32	-852.41
7400	86.25	272.05	6831	830.03	-951.29
7500	90.00	270.13	6833	831.14	-1051.24
7600	90.00	270.13	6833	831.37	-1151.24
7700	90.00	270.13	6833	831.61	-1251.24
7800	90.00	270.13	6833	831.84	-1351.24
7900	90.00	270.13	6833	832.08	-1451.24
8000	90.00	270.13	6833	832.31	-1551.24
8100	90.00	270.13	6833	832.55	-1651.24
8200	90.00	270.13	6833	832.78	-1751.24
8300	90.00	270.13	6833	833.02	-1851.24
8400	90.00	270.13	6833	833.25	-1951.24
8500	90.00	270.13	6833	833.49	-2051.24
8600	90.00	270.13	6833	833.72	-2151.24
8700	90.00	270.13	6833	833.96	-2251.24
8800	90.00	270.13	6833	834.19	-2351.23
8900	90.00	270.13	6833	834.43	-2451.23
9000	90.00	270.13	6833	834.66	-2551.23
9100	90.00	270.13	6833	834.89	-2651.23
9200	90.00	270.13	6833	835.13	-2751.23
9300	90.00	270.13	6833	835.36	-2851.23
9400	90.00	270.13	6833	835.60	-2951.23
9500	90.00	270.13	6833	835.83	-3051.23
9600	90.00	270.13	6833	836.07	-3151.23

9700	90.00	270.13	6833	836.30	-3251.23
9800	90.00	270.13	6833	836.54	-3351.23
9900	90.00	270.13	6833	836.77	-3451.23
10000	90.00	270.13	6833	837.01	-3551.23
10100	90.00	270.13	6833	837.24	-3651.23
10200	90.00	270.13	6833	837.48	-3751.23
10300	90.00	270.13	6833	837.71	-3851.23
10400	90.00	270.13	6833	837.95	-3951.23
10500	90.00	270.13	6833	838.18	-4051.23
10600	90.00	270.13	6833	838.42	-4151.23
10700	90.00	270.13	6833	838.65	-4251.23
10800	90.00	270.13	6833	838.89	-4351.23
10900	90.00	270.13	6833	839.12	-4451.23
11000	90.00	270.13	6833	839.36	-4551.23
11100	90.00	270.13	6833	839.59	-4651.23
11200	90.00	270.13	6833	839.83	-4751.23
11300	90.00	270.13	6833	840.06	-4851.23
11400	90.00	270.13	6833	840.30	-4951.23
11500	90.00	270.13	6833	840.53	-5051.23
11600	90.00	270.13	6833	840.77	-5151.23
11700	90.00	270.13	6833	841.00	-5251.23
11800	90.00	270.13	6833	841.24	-5351.23
11900	90.00	270.13	6833	841.47	-5451.23
12000	90.00	270.13	6833	841.71	-5551.23
12100	90.00	270.13	6833	841.94	-5651.23
12200	90.00	270.13	6833	842.18	-5751.23
12300	90.00	270.13	6833	842.41	-5851.23
12400	90.00	270.13	6833	842.65	-5951.22
12500	90.00	270.13	6833	842.88	-6051.22
12600	90.00	270.13	6833	843.12	-6151.22
12700	90.00	270.13	6833	843.35	-6251.22
12800	90.00	270.13	6833	843.59	-6351.22
12900	90.00	270.13	6833	843.82	-6451.22
13000	90.00	270.13	6833	844.06	-6551.22

13100	90.00	270.13	6833	844.29	-6651.22
13200	90.00	270.13	6833	844.53	-6751.22
13300	90.00	270.13	6833	844.76	-6851.22
13400	90.00	270.13	6833	845.00	-6951.22
13500	90.00	270.13	6833	845.23	-7051.22
13600	90.00	270.13	6833	845.47	-7151.22
13700	90.00	270.13	6833	845.70	-7251.22
13800	90.00	270.13	6833	845.94	-7351.22
13900	90.00	270.13	6833	846.17	-7451.22
14000	90.00	270.13	6833	846.41	-7551.22
14100	90.00	270.13	6833	846.64	-7651.22
14200	90.00	270.13	6833	846.88	-7751.22
14300	90.00	270.13	6833	847.11	-7851.22
14400	90.00	270.13	6833	847.35	-7951.22
14500	90.00	270.13	6833	847.58	-8051.22
14600	90.00	270.13	6833	847.82	-8151.22
14700	90.00	270.13	6833	848.05	-8251.22
14800	90.00	270.13	6833	848.29	-8351.22
14900	90.00	270.13	6833	848.52	-8451.22
15000	90.00	270.13	6833	848.76	-8551.22
15100	90.00	270.13	6833	848.99	-8651.22
15200	90.00	270.13	6833	849.23	-8751.22
15300	90.00	270.13	6833	849.46	-8851.22
15400	90.00	270.13	6833	849.70	-8951.22
15500	90.00	270.13	6833	849.93	-9051.22
15600	90.00	270.13	6833	850.17	-9151.22
15700	90.00	270.13	6833	850.40	-9251.22
15800	90.00	270.13	6833	850.64	-9351.22
15900	90.00	270.13	6833	850.87	-9451.22
16000	90.00	270.13	6833	851.11	-9551.22
16100	90.00	270.13	6833	851.34	-9651.21
16200	90.00	270.13	6833	851.58	-9751.21
16300	90.00	270.13	6833	851.81	-9851.21
16400	90.00	270.13	6833	852.05	-9951.21

[illegible]