

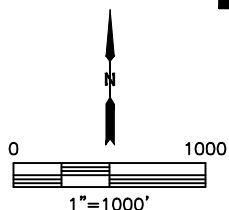
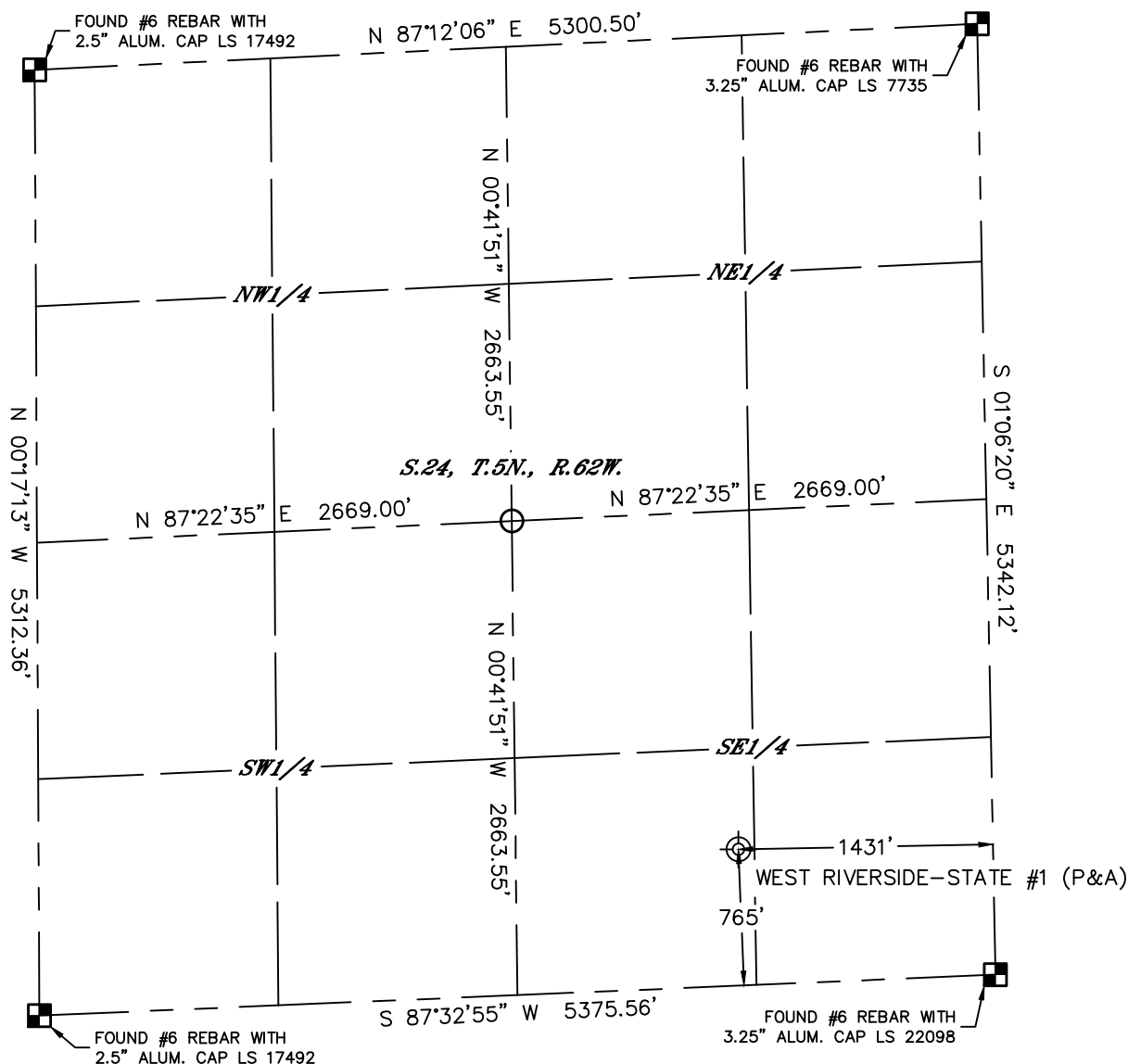


Lat40°, Inc. 6250 W. 10th Street, Unit 2, Greeley, CO 970-515-5294

PLUGGED AND ABANDONED WELL EXHIBIT

WEST RIVERSIDE-STATE #1

SECTION: 24
TOWNSHIP: 5N
RANGE: 62W
6TH. P.M.
WELD COUNTY, CO



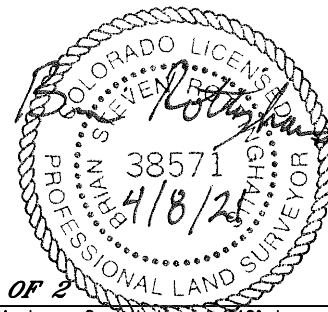
CLIENT: BONANZA CREEK ENERGY					LANDMAN: ANDY VAN HYK				
INSTRUMENT OPERATOR: CASEY KOHOUT					SURVEY DATE: 4/05/2021		SURFACE USE: RANGELAND		
SHL FOOTAGE			SHL LAT °	SHL LONG °	SHL PDOP	SHL ELEV (FT.)	SHL 1/4/1/4	SHL S-T-R	
765	FSL	1431	FEL	40.38097	-104.26683	1.3	4524	SWSE	24-5-62
DESCRIPTION: FOUND CAPPED WELL PIPE IN POTHOLE.									

LEGEND

- = ALIQUOT MONUMENT AS DESCRIBED
- = CALCULATED POSITION
- ⊗ = ABANDONED WELL

NOTE:

- 1) Bearings shown are Grid Bearings of the Colorado State Plane Coordinate System, North Zone, North American Datum 1983. The lineal dimensions as contained herein are based upon the "U.S. Survey Foot."
- 2) Distances to section lines measured at 90 degrees from said section lines.
- 3) Ground elevations are based on an observed GPS elevation (NAVD 1988 DATUM).
- 4) Latitude and Longitude shown are (NAD 83 DATUM).
- 5) Sectional data as shown hereon is from previous surveys and was not verified for this P&A Exhibit.
- 6) This map does not represent a boundary survey.



SHEET 1 OF 2

Brian S. Rottinghaus-On Behalf of Lat40°, Inc.
Colorado Licensed Professional Land Surveyor No. 38571
DATE: 4/8/2021
PROJECT#: 2021127



Lat40°, Inc. 6250 W. 10th Street, Unit 2, Greeley, CO 970-515-5294

PLUGGED AND ABANDONED WELL EXHIBIT

WEST RIVERSIDE-STATE #1

SECTION: 24
TOWNSHIP: 5N
RANGE: 62W
6TH. P.M.
WELD COUNTY, CO
DATE: 4/5/2021



VIEW NORTH



VIEW WEST



VIEW EAST



VIEW SOUTH