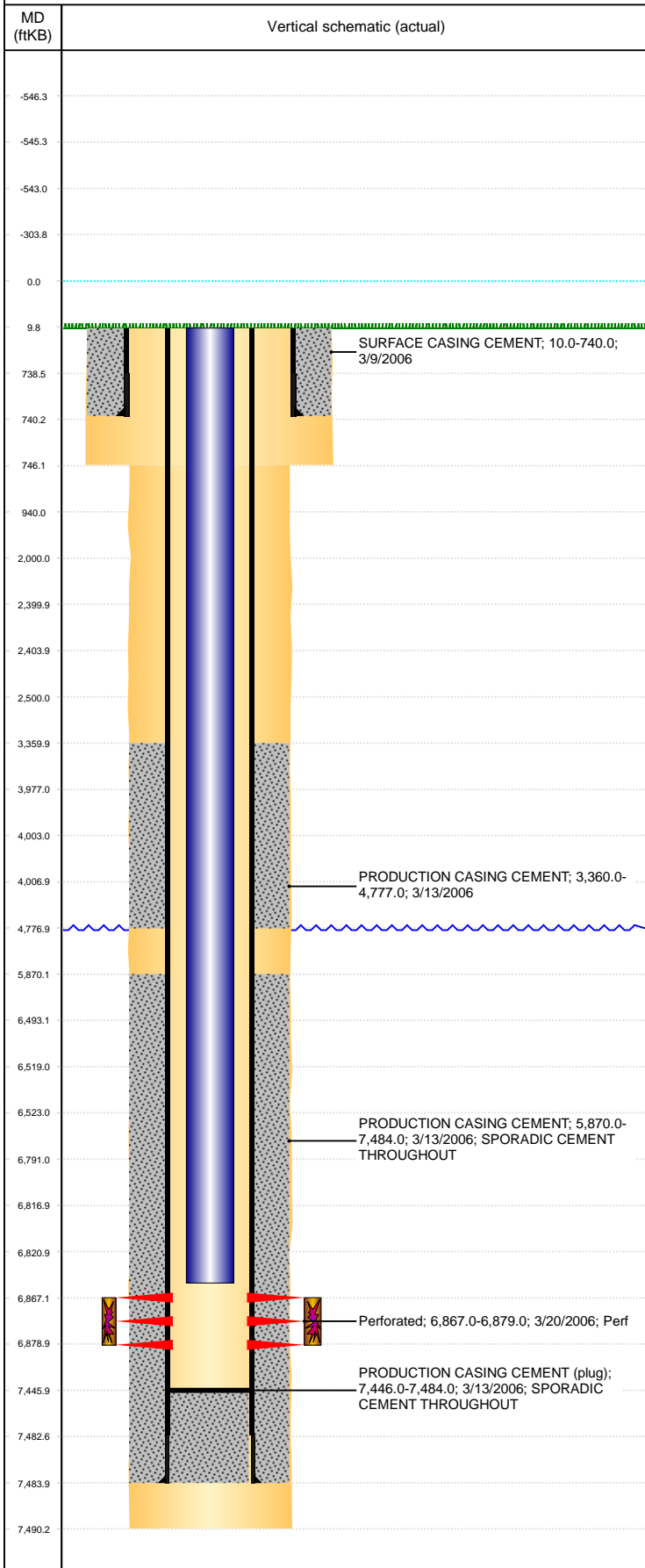


Well Name: KANGA STATE D36-02JI

VERTICAL, ORIGINAL HOLE, 4/6/2021 11:10:22 PM



Well Header									
API 05-123-22996		Business Unit DJ BASIN			District 15		Well Config VERTICAL		
KB - GL / MSL (ft... 10.00		Spud Date 3/8/2006		P & A Date		Well Production Status TA (AT SURFACE)			SoRT No
Comment DV TOOL @ 4777' TD DATE DISCREPANCY, DRILLING RPT 3/12/06 - STATE COMPLETION RPT 3/14/06									
Surface Location (Congressional)									
Qtr 3 NW	Qtr 4 NE	Section 36	Twnshp 3	Twnsh... N	Range 64	Rng E/... W	Actual Latitude (°) 40.18773627	Actual Longitude (°) -104.49790779	
Wellbore Sections									
Section Des		Size (in)			Act Top, MD (ftKB)		Act Btm, MD (ftKB)		
SURFACE		12 1/4			10		746		
PRODUCTION		7 7/8			746		7,490		
Casing Strings									
Csg Des		Run Date		OD (in)	Wt/Len (lb/ft)	Grade	Top, MD (ftKB)	MD (ftKB)	
Surface		3/9/2006		8 5/8	24.00	J-55	10.0	740.0	
PRODUCTION		3/13/2006		4 1/2	11.60	M-80	10.0	7,484.0	
Cement									
Des				Start Date		Top (ftKB)		Btm (ftKB)	
SURFACE CASING CEMENT				3/9/2006		10.0		740.0	
PRODUCTION CASING CEMENT				3/13/2006		3,360.0		4,777.0	
PRODUCTION CASING CEMENT				3/13/2006		5,870.0		7,484.0	
Zone Statuses									
Zone Name		Status Date	Status	Fluid Type	Job			Prod Method	
CODELL		2/16/2010	PR	Water				Flowing	
CODELL		5/9/2017	SI						
Perforation Data									
Linked Zone		Bnch/Stg	Entered Shot Total	Top (ftKB)		Btm (ftKB)		Date	
CODELL, ORIGINAL HOLE			48	6,867.00		6,879.00		3/20/2006	
Stimulation Intervals									
Zone				Start Date		Top (ftKB)		Btm (ftKB)	
CODELL, ORIGINAL HOLE				3/31/2006		6,867.0		6,879.0	
Other In Hole									
Run Date		Des			Make	OD (in)	Top (ftKB)	Btm (ftKB)	
Logs									
Date		Type				Top, MD (ftKB)		Btm, MD (ftKB)	
3/13/2006		INDUCTION				746.0		7,489.0	
3/13/2006		COMPENSATED DENSITY				2,500.0		7,469.0	
3/20/2006		CBL/CCL/GR				5,700.0		7,445.0	
1/10/2018		GYRO				12.0		7,650.0	
Plug Back Total Depths									
Date		Type			Com				Depth (ftKB)
3/13/2006		FLOAT COLLAR			FLOAT COLLAR				7,468.0
3/20/2006		FILL			DEPTH LOGGER ON CBL				7,446.0