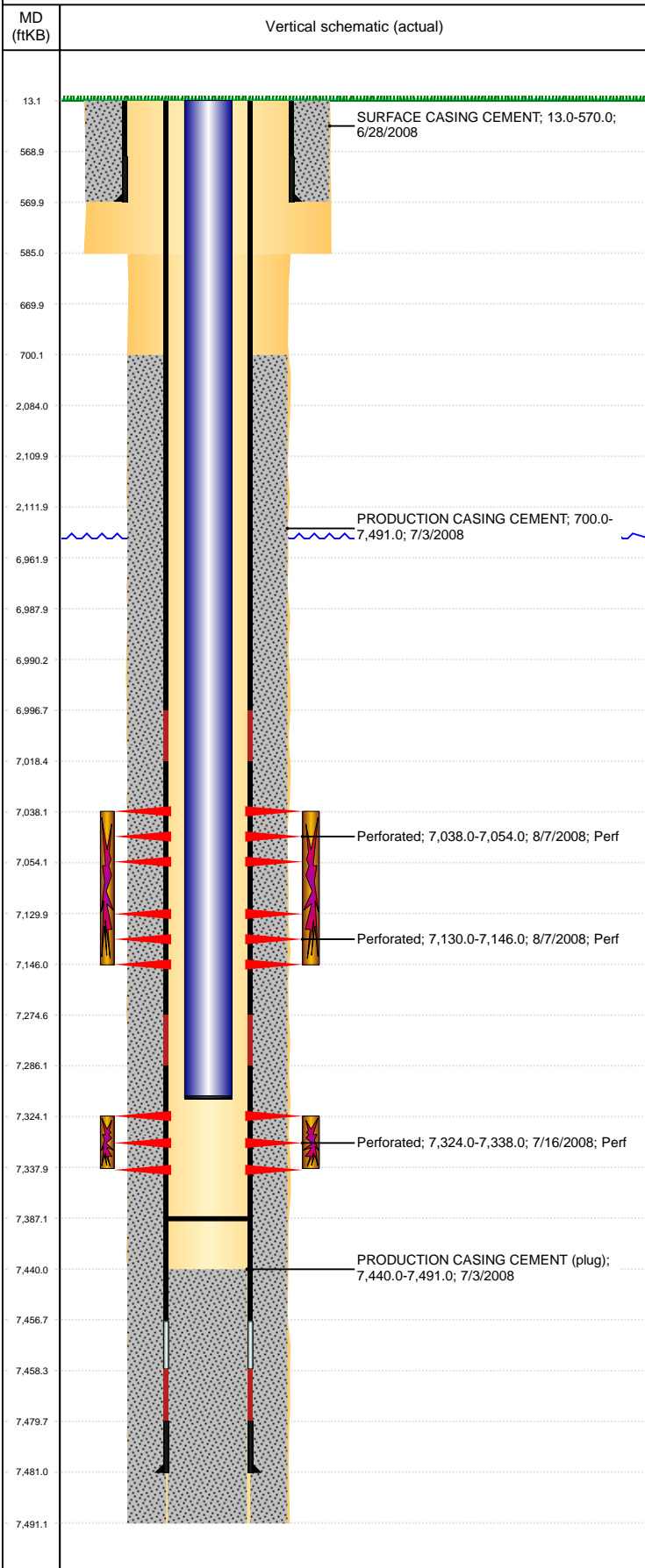


**Well Name: DIETRICH C08-32D**

DEVIATED, ORIGINAL HOLE, 4/6/2021 8:32:20 PM



Well Header									
API 05-123-26791		Business Unit DJ BASIN		District 15		Well Config DEVIATED			
KB - GL / MSL (ft... 13.00		Spud Date 6/28/2008		P & A Date		Well Production Status PR		SoRT No	
Comment 318A.e. LOCATION!!! TARGET DEPTHS: TVD=7192', MD=7491'									
Surface Location (Congressional)									
Qtr 3 NE	Qtr 4 NE	Section 7	Twonshp 4	Twonsh... N	Range 64	Rng E... W	Actual Latitude (°) 40.33053896	Actual Longitude (°) -104.58857324	
Wellbore Sections									
Section Des		Size (in)		Act Top, MD (ftKB)		Act Btm, MD (ftKB)			
SURFACE		12 1/4		13		585			
PRODUCTION		7 7/8		585		7,491			
Casing Strings									
Csg Des		Run Date		OD (in)	Wt/Len (lb/ft)	Grade	Top, MD (ftKB)	MD (ftKB)	
Surface		6/28/2008		8 5/8	24.00	J-55	13.0	570.0	
Production		7/3/2008		4 1/2	11.60	M-80	13.0	7,481.0	
Cement									
Des				Start Date		Top (ftKB)		Btm (ftKB)	
SURFACE CASING CEMENT				6/28/2008		13.0		570.0	
PRODUCTION CASING CEMENT				7/3/2008		700.0		7,491.0	
Zone Statuses									
Zone Name		Status Date	Status	Fluid Type		Job		Prod Method	
CODELL		8/8/2008	PR			DRILLING/COMPLETION - ORIGINAL, 6/27/2008...			
NIOBRARA		8/8/2008	PR			DRILLING/COMPLETION - ORIGINAL, 6/27/2008...			
Perforation Data									
Linked Zone		Bnch/Stg	Entered Shot Total	Top (ftKB)	Btm (ftKB)	Date			
NIOBRARA, ORIGINAL HOLE		A	64	7,038.00	7,054.00	8/7/2008			
NIOBRARA, ORIGINAL HOLE		B	64	7,130.00	7,146.00	8/7/2008			
CODELL, ORIGINAL HOLE			56	7,324.00	7,338.00	7/16/2008			
Stimulation Intervals									
Zone			Start Date		Top (ftKB)		Btm (ftKB)		
NIOBRARA, ORIGINAL HOLE			8/7/2008		7,038.0		7,146.0		
CODELL, ORIGINAL HOLE			8/7/2008		7,324.0		7,338.0		
Other In Hole									
Run Date		Des		Make		OD (in)	Top (ftKB)	Btm (ftKB)	
Logs									
Date		Type				Top, MD (ftKB)	Btm, MD (ftKB)		
7/3/2008		Caliper/Comp. Density/Neutron/GR/SP/ML				570.0	7,463.0		
7/3/2008		DIL/GR/SP/Caliper				570.0	7,483.0		
7/3/2008		GAMMA/RESISTIVITY/POROSITY				570.0	7,483.0		
7/14/2008		CBL/CCL/GR				150.0	7,439.0		
Plug Back Total Depths									
Date		Type		Com				Depth (ftKB)	
8/25/2008		FILL		D/O CIFP, C/O after Frac				7,407.0	
7/26/2011		FILL		Tag when running new tbg				7,387.0	