

Foundation Energy Management LLC, Williams 14-21
125-07897

Inspection #688310190

3/25/2021

Routine Inspection



COLORADO

**Oil & Gas Conservation
Commission**

Department of Natural Resources



FOUNDATION

ENERGY MANAGEMENT, LLC

WILLIAMS 13-21

NWSW Sec. 21-T1N-R45W
Rd. 32 & X.5, West 1/4 Mile, North in
Yuma County, CO

24 - HOUR EMERGENCY CALL:
1-866-767-3600

FOUNDATION

ENERGY MANAGEMENT, LLC

WILLIAMS 14-21

SWSE Sec. 21-T1N-R45W
Rd. 32 & X.5, West 1/4 Mile, North into
Yuma County, CO

24 - HOUR EMERGENCY CALL:
1-866-767-3600

Colorado Oil and Gas Conservation Commission

40.03222, -102.41221, 3815.6ft, 232°

03/25/2021 04:40:26 PM

FOUNDATION
ENERGY MANAGEMENT, LLC

WILLIAMS 14-21

SWSW Sec.21-T1N-R45W
Rd. X.5 & 32, ¼ Mile West, North into
Yuma County, CO

24-HOUR EMERGENCY CALL:
1-866-767-3600

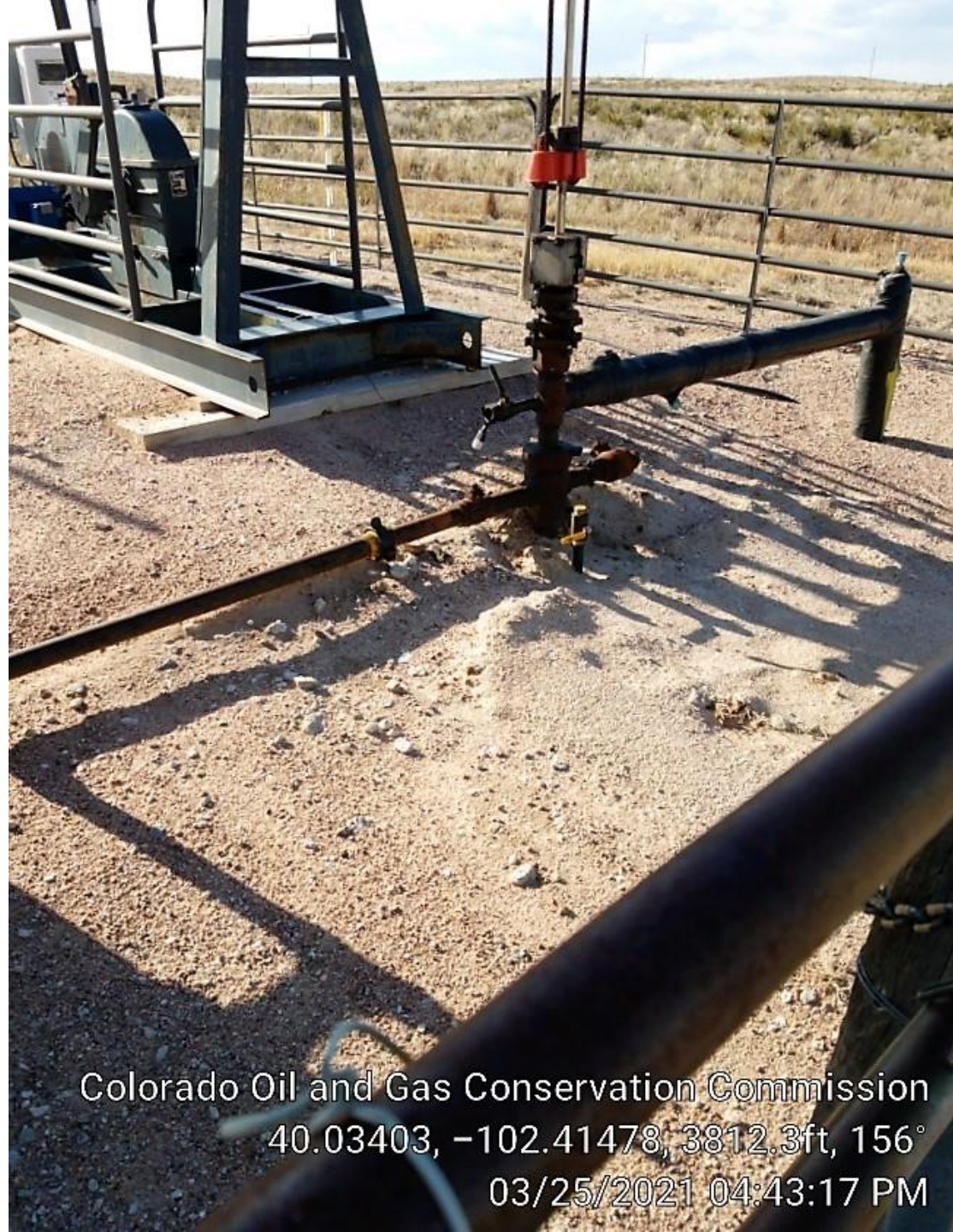
Colorado Oil and Gas Conservation Commission
40.03407, -102.41477, 3812.3ft, 206°
03/25/2021 04:43:13 PM



Colorado Oil and Gas Conservation Commission
40.03408, -102.4148, 3799.2ft, 194°
03/25/2021 04:43:32 PM



Colorado Oil and Gas Conservation Commission
40.03401, -102.41479, 3809.1ft, 149°
03/25/2021 04:43:20 PM



Colorado Oil and Gas Conservation Commission
40.03403, -102.41478, 3812.3ft, 156°
03/25/2021 04:43:17 PM



Colorado Oil and Gas Conservation Commission
40.03401, -102.41484, 3802.5ft, 257°
03/25/2021 04:43:55 PM



Colorado Oil and Gas Conservation Commission
40.03401, -102.41484, 3802.5ft, 236°

03/25/2021 04:43:57 PM

MDCO FABRIC			
SERIAL NUMBER			
MAWP		PSI AT	
NDMT		CL IN	