

Foundation Energy Management LLC, Fonte 12-27
125-09597

Inspection #688310172

3/25/2021

Routine Inspection

FOUNDATION
ENERGY MANAGEMENT, LLC

FONTE 12-27
BROWN 23-27

Rd Y & Rd 32, ½ South, E into
Yuma County, CO

24-HOUR EMERGENCY CALL:
1-866-767-3600

CO-OP #50112

Colorado Oil and Gas Conservation Commission
40.02488, -102.3977, 3769.7ft, 120°
03/25/2021 02:26:09 PM



Colorado Oil and Gas Conservation Commission
40.02493, -102.39769, 3773.0ft, 29°
03/25/2021 02:26:18 PM



Colorado Oil and Gas Conservation Commission
40.02498, -102.39762, 3776.2ft, 334°
03/25/2021 02:26:59 PM



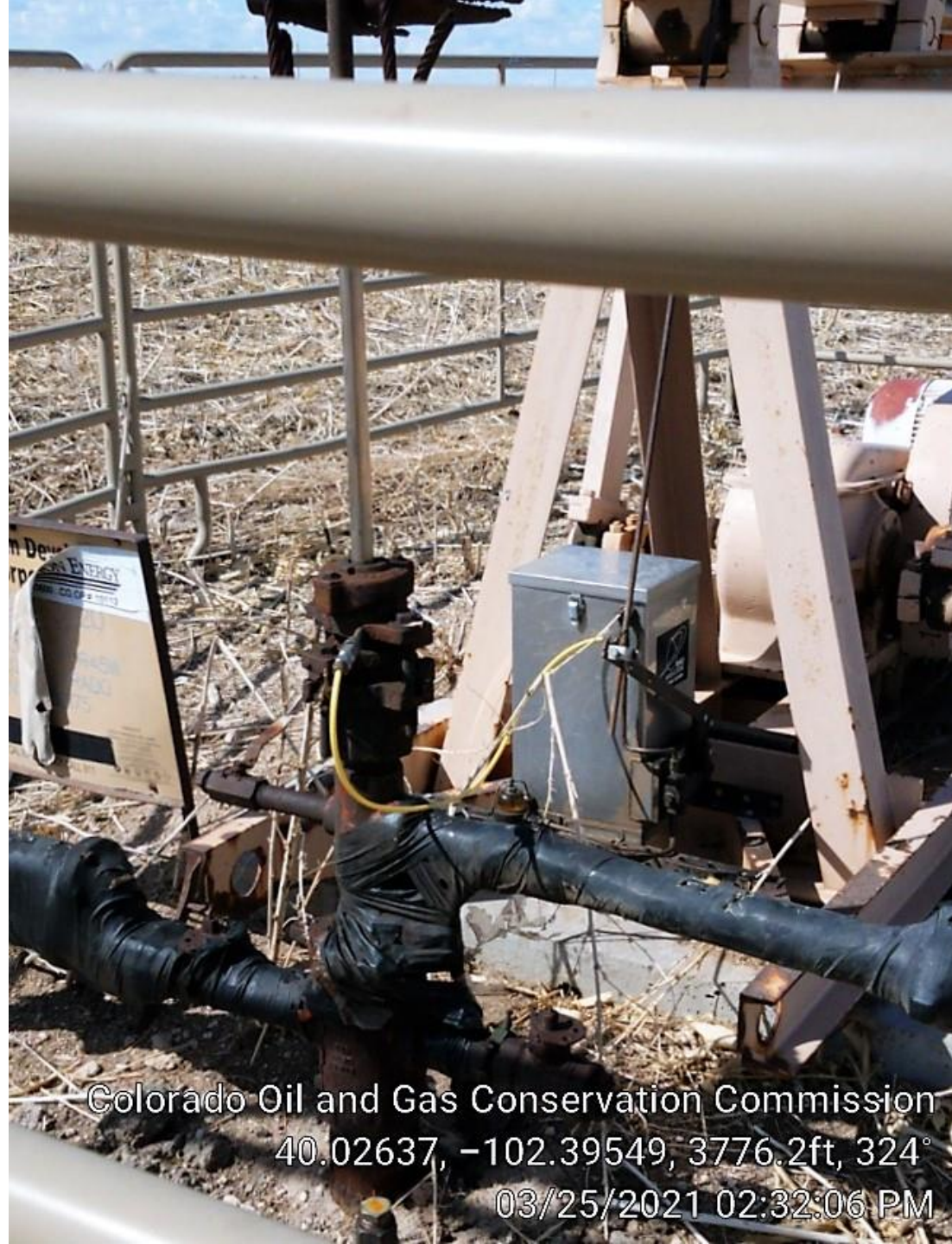
Colorado Oil and Gas Conservation Commission
40.02498, -102.39765, 3773.0ft, 278°
03/25/2021 02:27:07 PM



Colorado Oil and Gas Conservation Commission
40.02637, -102.39549, 3776.2ft, 310°
03/25/2021 02:32:37 PM

FOUNDATION
1-866-767-3600 CO C
552-352
ONTE 12-27
SEC.27-T1N-R4
A CO., COLORADO
LICENSE #69175
OR MEDICAL EMERGENCY CALL 911

Colorado Oil and Gas Conservation Commission
40.02637, -102.39549, 3773.0ft, 326°
03/25/2021 02:32:31 PM



Colorado Oil and Gas Conservation Commission
40.02637, -102.39549, 3776.2ft, 324°
03/25/2021 02:32:06 PM



Colorado Oil and Gas Conservation Commission
40.02638, -102.39549, 3776.2ft, 315°
03/25/2021 02:32:09 PM



Colorado Oil and Gas Conservation Commission
40.02495, -102.39551, 3773.0ft, 55°
03/25/2021 02:29:42 PM