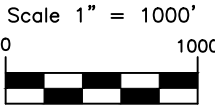
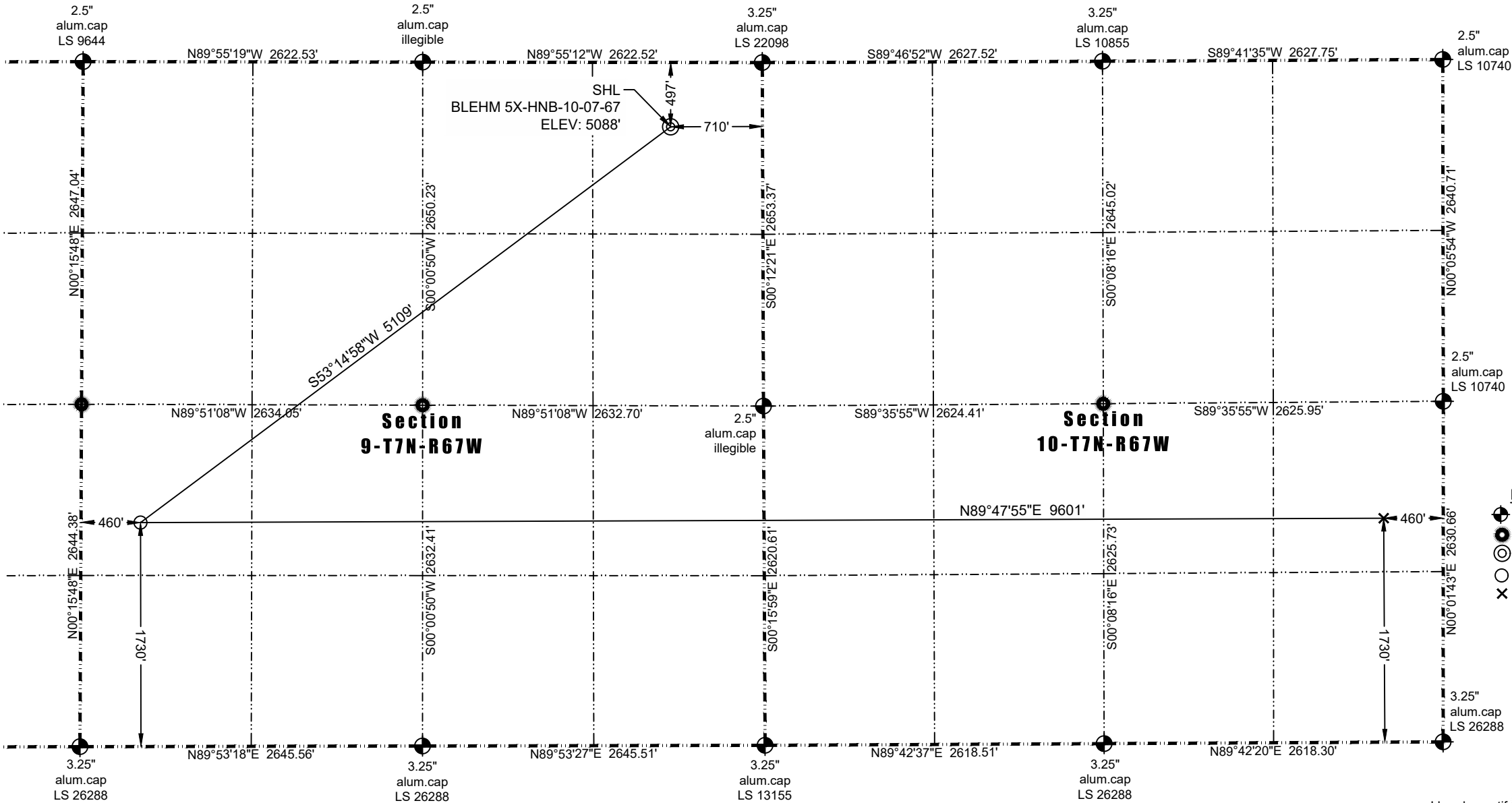


WELL LOCATION CERTIFICATE
THIS MAP DOES NOT REPRESENT A BOUNDARY SURVEY



2009 W. Littleton Blvd. #300
Littleton, CO 80120
970.576.4641 |

www.SterlingLandSurveyors.com



LEGEND

- Found Survey Monument
- Calculated Position
- Surface Hole Location (SHL)
- Landing Point Location (LPL)
- Bottom Hole Location (BHL)

Notes:

- Bearings and distances based on NAD 83 Colorado North State Plane Coordinate, using RTK GPS observations taken 11/14/2020 by operator Jon Wayne.
- Conversion factor to ground (1.0002661675).
- Elevations based on NAVD 88 GPS heights and Geoid 2009 corrections.
- See Location Drawing for visible improvements within 500 feet of Pad Site.
- The surface use is grazing land.

NOTICE: According to Colorado law you must commence any legal action based upon any defect in this W.L.C. within three years after you first discover such defect. In no event may any action based upon any defect in this W.L.C. be commenced more than ten years from this said date of the certification shown hereon.

In accordance with a request from Kit Tincer of Nickel Road Operating LLC, Sterling Land Surveyors, LLC has determined the location of the **BLEHM 5X-HNB-10-07-67** well site to be SHL: 497' FNL and 710' FEL, (LPL: 1730' FSL and 460' FWL), (BHL: 1730' FSL and 460' FEL), as measured at ninety (90) degrees from the section lines of Sections 9 and 10, Township 7 North, Range 67 West of the 6th Principal Meridian, Weld County, Colorado.

Proposed Surface Hole Data:

Latitude: N 40.594593°
Longitude: W 104.891185°
PDOP: 2.5

Proposed Landing Point Data:

Latitude: N 40.586278°
Longitude: W 104.906000°

Proposed Bottom Hole Data:

Latitude: N 40.586189°
Longitude: W 104.871433°

I hereby certify that this Well Location Certificate was prepared by me or under my direct supervision on 3/8/2021 for and on behalf of Nickel Road Operating LLC That it is not a Land Survey Plat or an Improvement Survey Plat and that it is not to be relied upon for establishment of fences, buildings, or other future improvement lines.

John Robert McGehee LS#38219