



Mr. Phillip Porter  
PDC Energy Inc.  
4000 Burlington Avenue  
Evans, Colorado 80620

November 13, 2020

**RE: Vegetation Assessment Report (Final Reclamation Completion Notice)**  
**COGCC Location Information: SCHWAB-64N66W /26NWSW (Location I.D. 327924)**  
**Operator Location Information: SCHWAB 26-12F Well (API # 05-123-15325)**  
**PDC Energy Inc. (Operator: 69175)**

Dear Mr. Porter:

Apex Companies, LLC (Apex) is presenting this letter to PDC Energy Inc. (PDC) documenting the results of a vegetation assessment that demonstrates successful completion of final reclamation efforts, per Colorado Oil & Gas Conservation Commission (COGCC) Rule 1004, on the above-referenced location. Attached is a topographic location map and a vegetation survey site map with additional location information.

Site visits, project correspondence and documentation, and the completed vegetation assessment confirmed that the location has been final reclaimed and returned by the landowner to cropland and agricultural use, with no evidence of unrestored subsidence over two growing seasons. Based on the results of the survey, final reclamation, as defined by COGCC rules and regulations, has been achieved. Photographs exhibiting current site conditions are attached, along with the site map that illustrates the photo points.

On August 17, 2020, the site was visited and photographs documenting crop establishment throughout the location were taken, along with reference area crops.

Apex appreciates the opportunity to provide environmental consulting services on this project. Should you have any questions or require additional information, please do not hesitate to contact me.

Sincerely,

**Apex Companies, LLC**

A handwritten signature in cursive script, reading 'Carolyn Craveiro de Sá'.

Carolyn Craveiro de Sá  
Environmental Scientist  
720-537-5478

[Carolyn.CraveirodeSa@apexcos.com](mailto:Carolyn.CraveirodeSa@apexcos.com)

**Attachments:**

1. Topographic Location Map
2. Vegetation Survey Site Map
3. Vegetation Assessment Photo Log

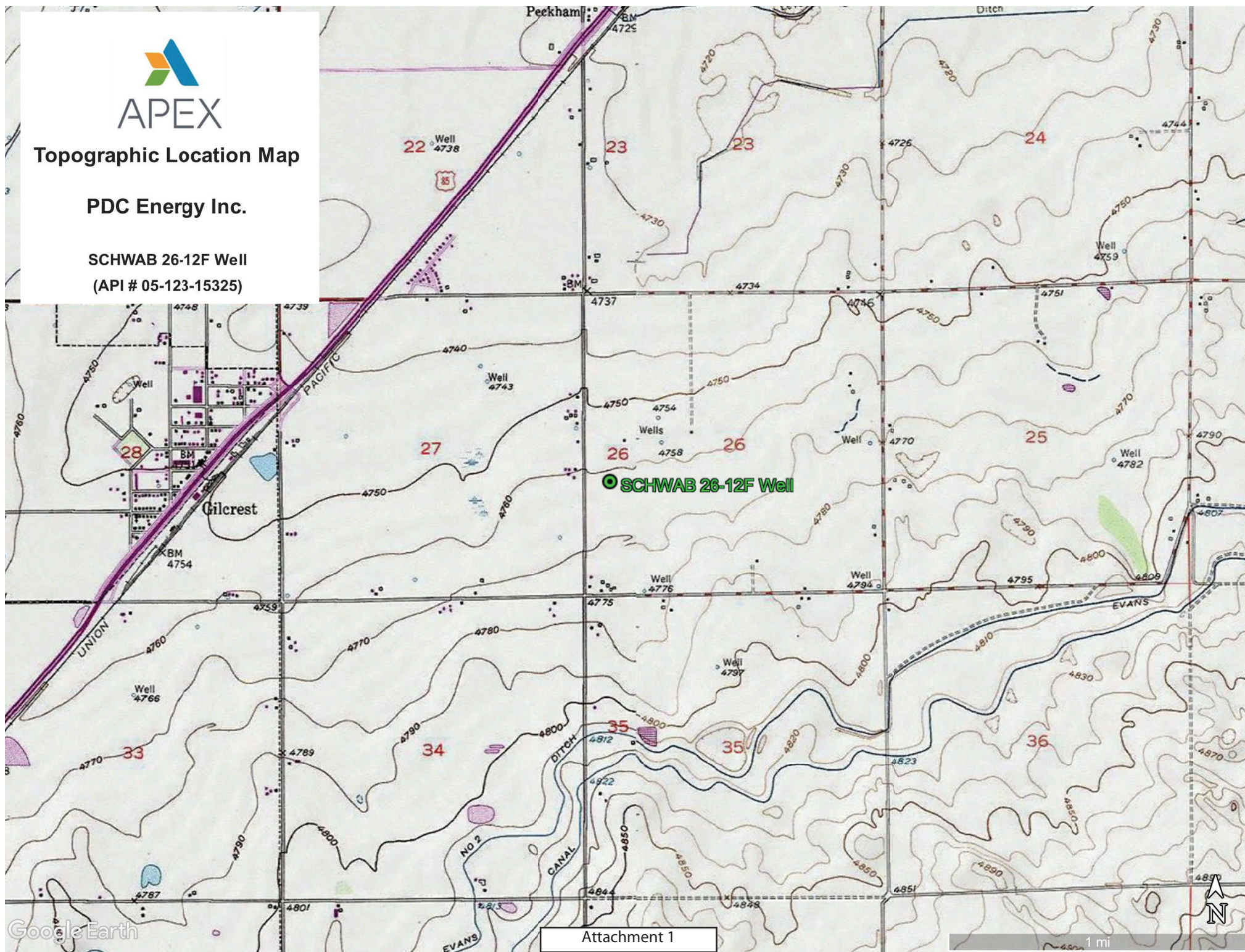




## Topographic Location Map

PDC Energy Inc.

SCHWAB 26-12F Well  
(API # 05-123-15325)



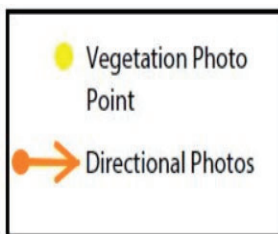




## Vegetation Survey Site Map

**PDC Energy Inc.**

**SCHWAB 26-12F Well**  
(API # 05-123-15325)



Legal Description: NWSW, Sec. 26, T4N-R66W 6 PM

Lat/Long: 40.281038/-104.752056

County: Weld

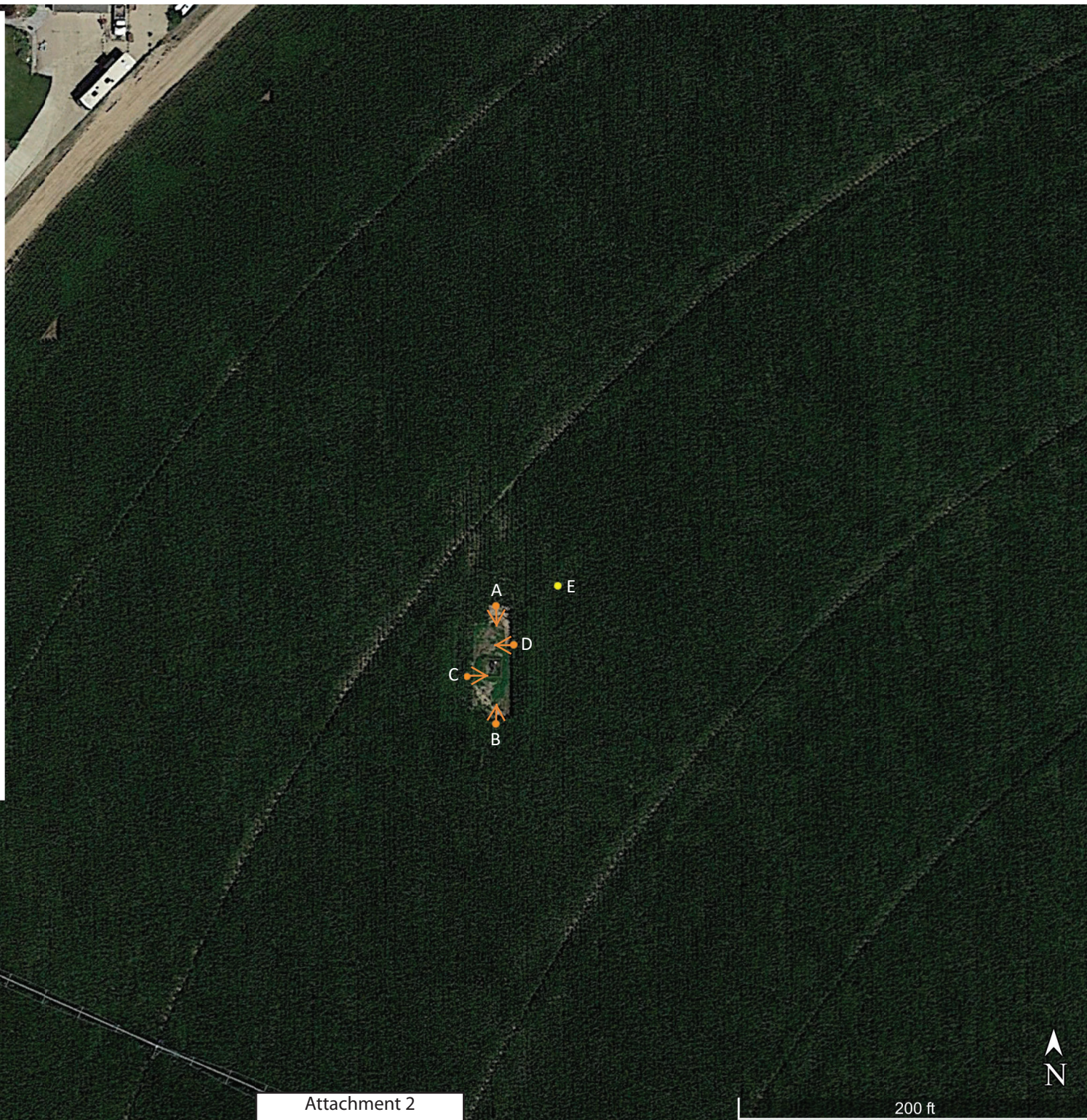
Land Use: Crop Land

Inspector: D. Hitchings

Assessment Date: 08/17/2020

Aerial Imagery Date: 07/17/2019

*\*Please reference coordinate disclaimer on the photo log pages.*





# Vegetation Assessment Photo Log

Date Completed - 08/17/2020

Client - **PDC Energy Inc.**

Operator Location Information (API) - **SCHWAB 26-12F Well (05-123-15325)**



Photo Point A: North of Disturbance - Facing South



Photo Point B: South of Disturbance - Facing North

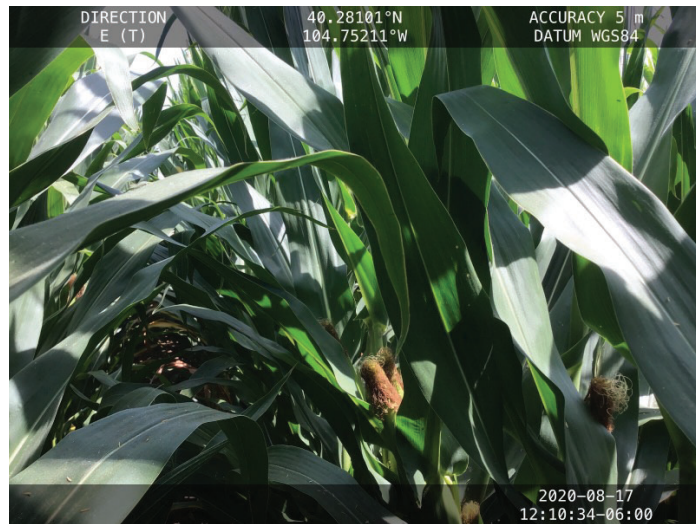


Photo Point C: West of Disturbance - Facing East



Photo Point D: East of Disturbance - Facing West

\*Geographic coordinates provided in the borders of all attached photos are based on points identified by the mobile phone or tablet which collected the photo. Coordinate accuracy in this format is typically no greater than 5 meters, while the points illustrated in the site diagram associated with this submittal were collected with a high accuracy GPS unit with sub-meter accuracy. Discrepancies between the site diagram and photo coordinates will exist.



## Vegetation Assessment Photo Log

Date Completed - 08/17/2020

Client - **PDC Energy Inc.**

Operator Location Information (API) - **SCHWAB 26-12F Well (05-123-15325)**



Photo Point E: Reference Crop Vegetation - Facing South