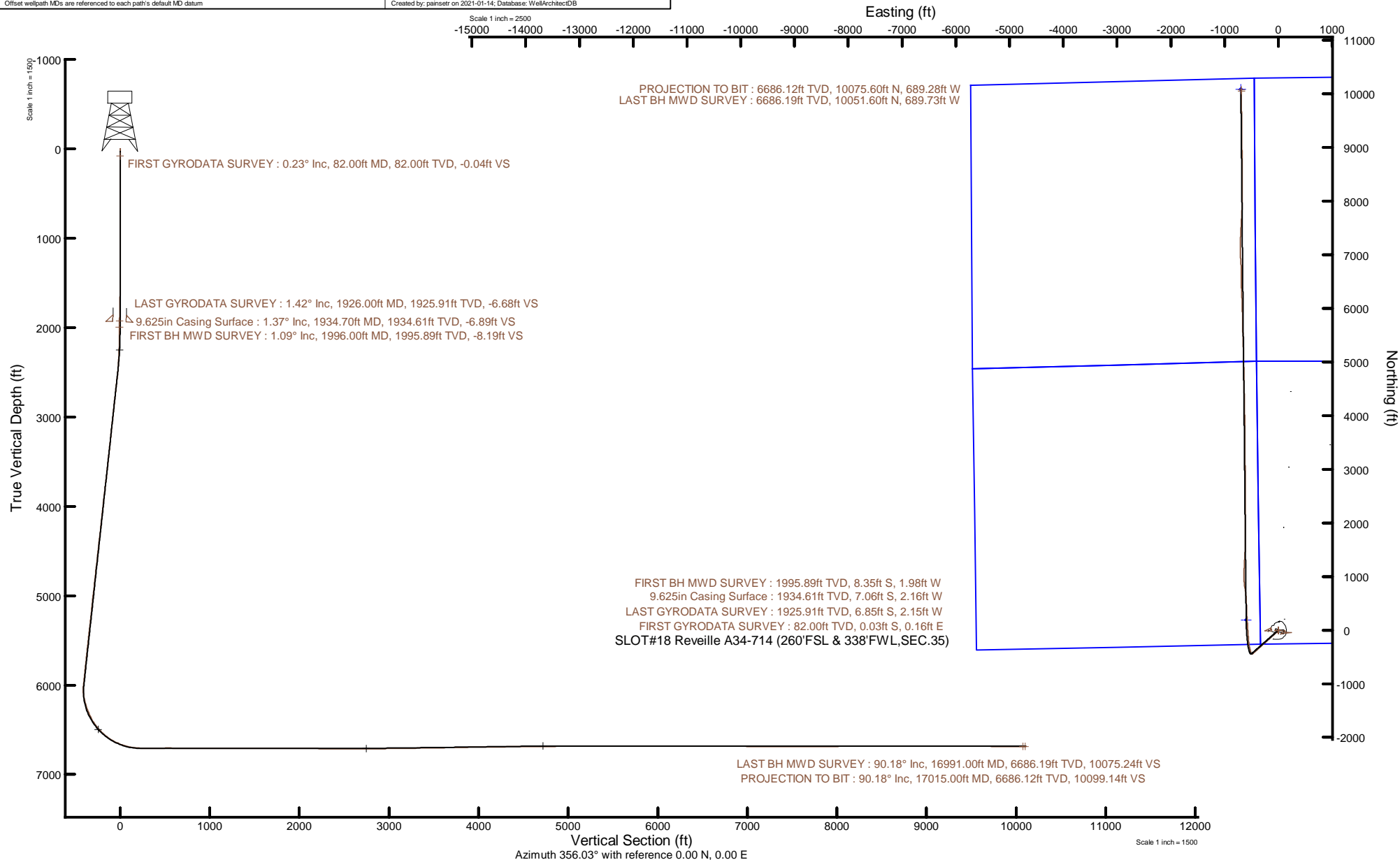


# NOBLE ENERGY, INC

Location: COLORADO Slot: SLOT#18 Reveille A34-714 (260°FSL & 338°FWL, SEC.35)  
Field: WELD COUNTY (NOBLE NAD 83 GRID) Well: Reveille A34-714  
Facility: SEC.35-T06N-R64W Wellbore: Reveille A34-714 PWB



Plot reference wellpath is Reveille A34-714 PWP Rev-A.0	Grid System: NAD83 / Lambert Colorado SP, Northern Zone (501), US feet
True vertical depths are referenced to H&P 517 (30) (RT)	North Reference: Grid north
Reference wellpath measured depths are referenced to H&P 517 (30) (RT)	Scale: True distance
H&P 517 (30) (RT) to Mean Sea Level: 4679 feet	Coordinates are in feet referenced to Slot
Mean Sea Level to Mud line (At Slot: SLOT#18 Reveille A34-714 (260°FSL & 338°FWL, SEC.35)): 0 feet	Depths are in feet
Offset wellpath MDs are referenced to each path's default MD datum	Created by: painsetr on 2021-01-14; Database: WellArchitectDB



## REFERENCE WELLPATH IDENTIFICATION

Operator	NOBLE ENERGY, INC	Well	Reveille A34-714
Field	WELD COUNTY (NOBLE NAD 83 GRID)	API	0512350800
Facility	SEC.35-T06N-R64W	Wellbore	Reveille A34-714 AWB
Slot	SLOT#18 Reveille A34-714 (260'FSL & 338'FWL,SEC.35)		

## REPORT SETUP INFORMATION

Projection System	NAD83 / Lambert Colorado SP, Northern Zone (501), US feet	Software System	WellArchitect® 6.0
North Reference	Grid	User	Painsetr
Scale	0.999962	Report Generated	1/14/2021 at 1:36:59 PM
Convergence at slot	0.63° East	Database	WellArchitectDB

## WELLPATH LOCATION

	Local coordinates		Grid coordinates		Geographic coordinates	
	North[ft]	East[ft]	Easting[US ft]	Northing[US ft]	Latitude	Longitude
Slot Location	-1917.11	-98.08	3271240.73	1403285.69	40.4363300°	-104.5255600°
Facility Reference Pt			3271338.81	1405202.72	40.4415890°	-104.5251320°
Field Reference Pt			3000000.00	4454105.15	48.7761986°	-105.5000000°

## WELLPATH DATUM

Calculation method	Minimum curvature	H&P 517 (30') (RT) to Facility Vertical Datum	4679.00ft
Horizontal Reference Pt	Slot	H&P 517 (30') (RT) to Mean Sea Level	4679.00ft
Vertical Reference Pt	H&P 517 (30') (RT)	H&P 517 (30') (RT) to Mud Line at Slot (SLOT#18 Reveille A34-714 (260'FSL & 338'FWL,SEC.35))	4679.00ft
MD Reference Pt	H&P 517 (30') (RT)	Section Origin	N 0.00, E 0.00 ft
Field Vertical Reference	Mean Sea Level	Section Azimuth	356.03°

## REFERENCE WELLPATH IDENTIFICATION

Operator	NOBLE ENERGY, INC	Well	Reveille A34-714
Field	WELD COUNTY (NOBLE NAD 83 GRID)	API	0512350800
Facility	SEC.35-T06N-R64W	Wellbore	Reveille A34-714 AWB
Slot	SLOT#18 Reveille A34-714 (260'FSL & 338'FWL,SEC.35)		

## WELLPATH DATA (182 stations)

MD [ft]	Inclination [°]	Azimuth [°]	TVD [ft]	Vert Sect [ft]	North [ft]	East [ft]	Grid East [US ft]	Grid North [US ft]	Latitude	Longitude	DLS [°/100ft]	Comments
0.00	0.000	100.790	0.00	0.00	0.00	0.00	3271240.73	1403285.69	40.4363300	-104.5255600	0.00	
82.00	0.230	100.790	82.00	-0.04	-0.03	0.16	3271240.89	1403285.66	40.4363299	-104.5255594	0.28	FIRST GYRODATA SURVEY
175.00	0.370	24.590	175.00	0.17	0.21	0.47	3271241.20	1403285.90	40.4363306	-104.5255583	0.42	
266.00	0.310	319.820	266.00	0.63	0.66	0.43	3271241.16	1403286.35	40.4363318	-104.5255584	0.40	
361.00	0.310	328.620	361.00	1.07	1.08	0.13	3271240.86	1403286.77	40.4363330	-104.5255595	0.05	
455.00	0.270	21.040	455.00	1.49	1.50	0.08	3271240.81	1403287.19	40.4363341	-104.5255597	0.28	
550.00	0.260	302.880	549.99	1.83	1.83	-0.02	3271240.71	1403287.52	40.4363350	-104.5255600	0.35	
645.00	0.280	225.740	644.99	1.80	1.78	-0.37	3271240.36	1403287.47	40.4363349	-104.5255613	0.35	
739.00	0.090	3.900	738.99	1.73	1.70	-0.53	3271240.20	1403287.39	40.4363347	-104.5255618	0.37	
834.00	0.290	150.430	833.99	1.59	1.56	-0.40	3271240.33	1403287.25	40.4363343	-104.5255614	0.39	
928.00	0.230	3.740	927.99	1.56	1.54	-0.27	3271240.46	1403287.23	40.4363343	-104.5255609	0.53	
1023.00	0.150	260.640	1022.99	1.74	1.71	-0.38	3271240.35	1403287.40	40.4363347	-104.5255613	0.32	
1118.00	0.450	189.450	1117.99	1.36	1.32	-0.57	3271240.16	1403287.01	40.4363337	-104.5255620	0.45	
1213.00	0.170	193.250	1212.99	0.86	0.82	-0.66	3271240.07	1403286.51	40.4363323	-104.5255624	0.30	
1307.00	0.170	290.100	1306.99	0.79	0.73	-0.82	3271239.91	1403286.42	40.4363320	-104.5255629	0.27	
1402.00	0.170	222.870	1401.99	0.75	0.68	-1.05	3271239.68	1403286.37	40.4363319	-104.5255638	0.20	
1497.00	0.230	225.340	1496.99	0.53	0.44	-1.28	3271239.45	1403286.13	40.4363313	-104.5255646	0.06	
1592.00	0.430	175.540	1591.99	0.05	-0.05	-1.39	3271239.34	1403285.64	40.4363299	-104.5255650	0.35	
1686.00	0.880	189.190	1685.98	-1.01	-1.11	-1.48	3271239.25	1403284.58	40.4363270	-104.5255654	0.50	
1781.00	1.470	190.070	1780.96	-2.90	-3.03	-1.81	3271238.92	1403282.66	40.4363217	-104.5255666	0.62	
1876.00	1.580	182.700	1875.93	-5.38	-5.54	-2.08	3271238.65	1403280.15	40.4363149	-104.5255677	0.24	
1926.00	1.420	182.990	1925.91	-6.68	-6.85	-2.15	3271238.58	1403278.84	40.4363113	-104.5255680	0.32	LAST GYRODATA SURVEY
1996.00	1.090	161.480	1995.89	-8.19	-8.35	-1.98	3271238.75	1403277.34	40.4363072	-104.5255675	0.81	FIRST BH MWD SURVEY
2090.00	0.170	113.270	2089.89	-9.12	-9.25	-1.57	3271239.16	1403276.44	40.4363047	-104.5255660	1.05	
2185.00	1.400	227.580	2184.88	-9.90	-10.09	-2.30	3271238.43	1403275.60	40.4363024	-104.5255687	1.56	
2279.00	3.470	225.190	2278.79	-12.48	-12.87	-5.16	3271235.57	1403272.82	40.4362949	-104.5255791	2.20	
2374.00	5.120	228.060	2373.52	-16.97	-17.73	-10.36	3271230.37	1403267.96	40.4362817	-104.5255979	1.75	
2469.00	7.930	228.660	2467.89	-23.56	-24.89	-18.43	3271222.30	1403260.80	40.4362623	-104.5256272	2.96	
2563.00	10.280	227.230	2560.70	-32.75	-34.87	-29.46	3271211.27	1403250.82	40.4362352	-104.5256672	2.51	
2658.00	10.450	228.180	2654.15	-43.35	-46.37	-42.10	3271198.63	1403239.32	40.4362040	-104.5257131	0.25	

### REFERENCE WELLPATH IDENTIFICATION

Operator	NOBLE ENERGY, INC	Well	Reveille A34-714
Field	WELD COUNTY (NOBLE NAD 83 GRID)	API	0512350800
Facility	SEC.35-T06N-R64W	Wellbore	Reveille A34-714 AWB
Slot	SLOT#18 Reveille A34-714 (260'FSL & 338'FWL,SEC.35)		

### WELLPATH DATA (182 stations)

MD [ft]	Inclination [°]	Azimuth [°]	TVD [ft]	Vert Sect [ft]	North [ft]	East [ft]	Grid East [US ft]	Grid North [US ft]	Latitude	Longitude	DLS [°/100ft]	Comments
2752.00	10.350	227.630	2746.61	-53.82	-57.75	-54.69	3271186.04	1403227.95	40.4361732	-104.5257588	0.15	
2847.00	9.760	229.360	2840.15	-63.94	-68.74	-67.11	3271173.62	1403216.95	40.4361434	-104.5258038	0.70	
2942.00	10.100	226.690	2933.73	-74.03	-79.70	-79.28	3271161.45	1403205.99	40.4361136	-104.5258479	0.60	
3036.00	10.200	229.170	3026.25	-84.24	-90.80	-91.58	3271149.16	1403194.90	40.4360836	-104.5258925	0.48	
3131.00	9.820	229.740	3119.81	-94.09	-101.53	-104.12	3271136.61	1403184.16	40.4360545	-104.5259380	0.41	
3226.00	9.860	228.220	3213.41	-103.87	-112.19	-116.37	3271124.36	1403173.51	40.4360256	-104.5259825	0.28	
3320.00	9.930	228.550	3306.01	-113.73	-122.91	-128.45	3271112.29	1403162.78	40.4359965	-104.5260263	0.10	
3415.00	9.950	228.690	3399.59	-123.70	-133.75	-140.75	3271099.98	1403151.94	40.4359671	-104.5260709	0.03	
3509.00	10.070	228.600	3492.16	-133.62	-144.55	-153.02	3271087.72	1403141.15	40.4359379	-104.5261154	0.13	
3604.00	10.170	227.180	3585.68	-143.93	-155.74	-165.40	3271075.34	1403129.95	40.4359075	-104.5261603	0.28	
3699.00	10.450	227.680	3679.14	-154.54	-167.24	-177.92	3271062.82	1403118.45	40.4358763	-104.5262057	0.31	
3793.00	10.330	228.080	3771.60	-165.01	-178.61	-190.49	3271050.24	1403107.08	40.4358455	-104.5262513	0.15	
3888.00	10.320	227.140	3865.06	-175.59	-190.09	-203.07	3271037.67	1403095.60	40.4358144	-104.5262970	0.18	
3982.00	10.270	228.760	3957.55	-185.95	-201.34	-215.54	3271025.20	1403084.35	40.4357839	-104.5263422	0.31	
4077.00	10.160	228.220	4051.05	-196.22	-212.51	-228.16	3271012.58	1403073.19	40.4357536	-104.5263880	0.15	
4171.00	10.090	227.980	4143.58	-206.38	-223.55	-240.46	3271000.28	1403062.15	40.4357237	-104.5264326	0.09	
4266.00	10.030	228.140	4237.12	-216.59	-234.64	-252.80	3270987.94	1403051.06	40.4356936	-104.5264774	0.07	
4361.00	10.320	228.070	4330.63	-226.90	-245.84	-265.29	3270975.45	1403039.86	40.4356632	-104.5265227	0.31	
4455.00	10.320	227.840	4423.11	-237.29	-257.12	-277.80	3270962.94	1403028.58	40.4356327	-104.5265680	0.04	
4550.00	10.050	228.470	4516.61	-247.60	-268.33	-290.31	3270950.43	1403017.37	40.4356023	-104.5266134	0.31	
4645.00	10.290	228.860	4610.12	-257.78	-279.41	-302.91	3270937.83	1403006.30	40.4355723	-104.5266591	0.26	
4739.00	10.280	228.400	4702.61	-267.98	-290.50	-315.50	3270925.24	1402995.20	40.4355422	-104.5267048	0.09	
4834.00	10.120	228.520	4796.10	-278.24	-301.65	-328.10	3270912.65	1402984.05	40.4355119	-104.5267505	0.17	
4928.00	10.240	227.350	4888.62	-288.49	-312.79	-340.43	3270900.32	1402972.92	40.4354818	-104.5267952	0.25	
5023.00	10.250	227.790	4982.11	-299.00	-324.18	-352.90	3270887.85	1402961.52	40.4354509	-104.5268404	0.08	
5117.00	9.820	229.110	5074.67	-308.99	-335.05	-365.15	3270875.59	1402950.65	40.4354214	-104.5268849	0.52	
5212.00	9.960	227.800	5168.26	-318.94	-345.87	-377.36	3270863.38	1402939.83	40.4353921	-104.5269292	0.28	
5306.00	10.030	228.180	5260.83	-328.99	-356.79	-389.49	3270851.26	1402928.91	40.4353625	-104.5269732	0.10	
5400.00	9.940	226.310	5353.41	-339.20	-367.85	-401.45	3270839.29	1402917.85	40.4353325	-104.5270166	0.36	
5495.00	9.900	226.660	5446.99	-349.62	-379.12	-413.32	3270827.43	1402906.58	40.4353019	-104.5270596	0.08	

### REFERENCE WELLPATH IDENTIFICATION

Operator	NOBLE ENERGY, INC	Well	Reveille A34-714
Field	WELD COUNTY (NOBLE NAD 83 GRID)	API	0512350800
Facility	SEC.35-T06N-R64W	Wellbore	Reveille A34-714 AWB
Slot	SLOT#18 Reveille A34-714 (260'FSL & 338'FWL,SEC.35)		

### WELLPATH DATA (182 stations)

MD [ft]	Inclination [°]	Azimuth [°]	TVD [ft]	Vert Sect [ft]	North [ft]	East [ft]	Grid East [US ft]	Grid North [US ft]	Latitude	Longitude	DLS [°/100ft]	Comments
5589.00	9.890	227.620	5539.59	-359.77	-390.11	-425.16	3270815.59	1402895.60	40.4352721	-104.5271026	0.18	
5684.00	9.950	228.230	5633.17	-369.87	-401.08	-437.31	3270803.44	1402884.63	40.4352424	-104.5271467	0.13	
5778.00	9.850	228.090	5725.77	-379.79	-411.86	-449.35	3270791.40	1402873.85	40.4352131	-104.5271904	0.11	
5873.00	9.810	228.400	5819.38	-389.72	-422.66	-461.45	3270779.30	1402863.05	40.4351838	-104.5272342	0.07	
5968.00	9.740	228.370	5913.00	-399.58	-433.37	-473.51	3270767.24	1402852.34	40.4351548	-104.5272780	0.07	
6062.00	9.480	230.080	6005.68	-408.98	-443.62	-485.39	3270755.36	1402842.09	40.4351270	-104.5273211	0.41	
6157.00	10.250	302.890	6099.60	-408.50	-444.05	-498.53	3270742.22	1402841.66	40.4351262	-104.5273683	12.30	
6252.00	15.350	340.590	6192.36	-391.27	-427.56	-509.83	3270730.92	1402858.14	40.4351718	-104.5274082	10.03	
6346.00	20.890	347.540	6281.67	-362.68	-399.44	-517.59	3270723.16	1402886.27	40.4352493	-104.5274350	6.32	
6441.00	27.750	345.130	6368.19	-324.16	-361.48	-526.93	3270713.82	1402924.22	40.4353537	-104.5274670	7.29	
6535.00	37.240	346.140	6447.39	-274.54	-312.60	-539.39	3270701.36	1402973.10	40.4354883	-104.5275099	10.11	
6630.00	45.050	352.580	6518.90	-212.54	-251.24	-550.64	3270690.11	1403034.46	40.4356570	-104.5275479	9.34	
6724.00	52.340	356.790	6580.92	-142.02	-180.99	-557.03	3270683.72	1403104.71	40.4358500	-104.5275680	8.45	
6819.00	62.610	356.150	6631.93	-62.03	-101.15	-561.98	3270678.77	1403184.54	40.4360693	-104.5275827	10.83	
6914.00	70.170	355.710	6669.95	24.95	-14.39	-568.16	3270672.59	1403271.30	40.4363076	-104.5276015	7.97	
7009.00	79.720	356.290	6694.60	116.58	77.02	-574.54	3270666.21	1403362.71	40.4365587	-104.5276208	10.07	
7103.00	87.940	355.510	6704.70	209.96	170.16	-581.23	3270659.53	1403455.84	40.4368146	-104.5276411	8.78	
7198.00	89.940	356.840	6706.45	304.93	264.92	-587.56	3270653.19	1403550.60	40.4370749	-104.5276602	2.53	
7293.00	90.770	358.330	6705.86	399.89	359.83	-591.56	3270649.19	1403645.51	40.4373355	-104.5276708	1.80	
7387.00	90.250	358.510	6705.03	493.81	453.79	-594.16	3270646.60	1403739.47	40.4375935	-104.5276764	0.59	
7482.00	89.690	357.140	6705.08	588.76	548.72	-597.76	3270642.99	1403834.39	40.4378541	-104.5276856	1.56	
7577.00	89.290	355.400	6705.92	683.75	643.51	-603.94	3270636.81	1403929.18	40.4381145	-104.5277041	1.88	
7671.00	88.740	350.950	6707.54	777.60	736.81	-615.11	3270625.65	1404022.47	40.4383709	-104.5277405	4.77	
7766.00	90.150	351.730	6708.46	872.27	830.72	-629.41	3270611.35	1404116.38	40.4386291	-104.5277882	1.70	
7861.00	90.280	357.180	6708.10	967.20	925.24	-638.59	3270602.17	1404210.89	40.4388888	-104.5278174	5.74	
7956.00	89.940	359.390	6707.92	1062.12	1020.19	-641.43	3270599.33	1404305.84	40.4391495	-104.5278239	2.35	
8050.00	89.660	3.310	6708.25	1155.69	1114.15	-639.21	3270601.54	1404399.79	40.4394073	-104.5278123	4.18	
8145.00	89.940	3.230	6708.58	1249.94	1208.99	-633.80	3270606.96	1404494.63	40.4396674	-104.5277891	0.31	
8239.00	89.780	3.390	6708.81	1343.18	1302.83	-628.37	3270612.39	1404588.47	40.4399249	-104.5277659	0.24	
8334.00	90.030	3.470	6708.97	1437.39	1397.66	-622.68	3270618.07	1404683.30	40.4401850	-104.5277417	0.28	

## REFERENCE WELLPATH IDENTIFICATION

Operator	NOBLE ENERGY, INC	Well	Reveille A34-714
Field	WELD COUNTY (NOBLE NAD 83 GRID)	API	0512350800
Facility	SEC.35-T06N-R64W	Wellbore	Reveille A34-714 AWB
Slot	SLOT#18 Reveille A34-714 (260'FSL & 338'FWL,SEC.35)		

## WELLPATH DATA (182 stations)

MD [ft]	Inclination [°]	Azimuth [°]	TVD [ft]	Vert Sect [ft]	North [ft]	East [ft]	Grid East [US ft]	Grid North [US ft]	Latitude	Longitude	DLS [°/100ft]	Comments
8429.00	89.850	1.470	6709.07	1531.78	1492.57	-618.59	3270622.16	1404778.20	40.4404453	-104.5277233	2.11	
8523.00	90.120	1.620	6709.09	1625.35	1586.54	-616.06	3270624.70	1404872.16	40.4407032	-104.5277105	0.33	
8618.00	89.850	359.560	6709.12	1720.04	1681.52	-615.08	3270625.68	1404967.15	40.4409639	-104.5277032	2.19	
8713.00	89.910	359.580	6709.32	1814.86	1776.52	-615.79	3270624.96	1405062.14	40.4412246	-104.5277020	0.07	
8808.00	89.850	359.840	6709.52	1909.67	1871.52	-616.27	3270624.48	1405157.14	40.4414854	-104.5277000	0.28	
8903.00	89.880	0.090	6709.74	2004.44	1966.52	-616.33	3270624.42	1405252.13	40.4417461	-104.5276965	0.27	
8997.00	90.120	0.010	6709.74	2098.21	2060.52	-616.25	3270624.51	1405346.13	40.4420041	-104.5276925	0.27	
9092.00	89.660	0.070	6709.92	2192.98	2155.52	-616.18	3270624.57	1405441.12	40.4422649	-104.5276885	0.49	
9186.00	88.650	359.170	6711.31	2286.78	2249.50	-616.80	3270623.95	1405535.11	40.4425228	-104.5276870	1.44	
9375.00	89.910	0.180	6713.68	2475.38	2438.48	-617.88	3270622.88	1405724.07	40.4430416	-104.5276834	0.85	
9470.00	89.720	0.180	6713.99	2570.13	2533.48	-617.58	3270623.18	1405819.07	40.4433023	-104.5276786	0.20	
9564.00	90.400	358.670	6713.89	2663.96	2627.47	-618.52	3270622.23	1405913.06	40.4435603	-104.5276783	1.76	
9659.00	90.830	0.430	6712.87	2758.78	2722.46	-619.27	3270621.49	1406008.04	40.4438210	-104.5276772	1.91	
9754.00	90.680	0.250	6711.62	2853.50	2817.45	-618.70	3270622.05	1406103.03	40.4440817	-104.5276715	0.25	
9848.00	90.890	0.270	6710.33	2947.23	2911.44	-618.28	3270622.48	1406197.01	40.4443397	-104.5276662	0.22	
9943.00	90.830	359.130	6708.91	3042.03	3006.43	-618.77	3270621.98	1406292.00	40.4446004	-104.5276643	1.20	
10037.00	90.770	359.180	6707.59	3135.88	3100.41	-620.16	3270620.59	1406385.97	40.4448584	-104.5276656	0.08	
10132.00	90.800	359.170	6706.29	3230.73	3195.39	-621.53	3270619.23	1406480.95	40.4451192	-104.5276667	0.03	
10227.00	91.010	0.100	6704.79	3325.53	3290.37	-622.13	3270618.62	1406575.93	40.4453799	-104.5276652	1.00	
10321.00	90.800	359.540	6703.31	3419.31	3384.36	-622.43	3270618.33	1406669.92	40.4456379	-104.5276625	0.64	
10416.00	90.770	0.010	6702.00	3514.10	3479.35	-622.80	3270617.95	1406764.90	40.4458986	-104.5276601	0.50	
10510.00	91.200	359.880	6700.39	3607.86	3573.34	-622.89	3270617.86	1406858.88	40.4461566	-104.5276568	0.48	
10605.00	91.720	359.380	6697.97	3702.65	3668.30	-623.51	3270617.25	1406953.85	40.4464172	-104.5276552	0.76	
10699.00	90.680	359.500	6696.00	3796.46	3762.28	-624.42	3270616.33	1407047.82	40.4466752	-104.5276548	1.11	
10794.00	90.620	359.040	6694.92	3891.30	3857.26	-625.63	3270615.12	1407142.80	40.4469359	-104.5276554	0.49	
10888.00	90.550	358.990	6693.96	3985.17	3951.24	-627.25	3270613.50	1407236.78	40.4471939	-104.5276575	0.09	
10983.00	90.620	359.280	6692.99	4080.02	4046.23	-628.68	3270612.07	1407331.76	40.4474547	-104.5276589	0.31	
11078.00	90.770	358.740	6691.84	4174.89	4141.21	-630.33	3270610.43	1407426.73	40.4477154	-104.5276611	0.59	
11172.00	90.920	358.690	6690.45	4268.78	4235.17	-632.43	3270608.32	1407520.69	40.4479734	-104.5276650	0.17	
11267.00	90.430	358.490	6689.33	4363.67	4330.14	-634.77	3270605.98	1407615.65	40.4482341	-104.5276696	0.56	

## REFERENCE WELLPATH IDENTIFICATION

Operator	NOBLE ENERGY, INC	Well	Reveille A34-714
Field	WELD COUNTY (NOBLE NAD 83 GRID)	API	0512350800
Facility	SEC.35-T06N-R64W	Wellbore	Reveille A34-714 AWB
Slot	SLOT#18 Reveille A34-714 (260'FSL & 338'FWL,SEC.35)		

## WELLPATH DATA (182 stations)

MD [ft]	Inclination [°]	Azimuth [°]	TVD [ft]	Vert Sect [ft]	North [ft]	East [ft]	Grid East [US ft]	Grid North [US ft]	Latitude	Longitude	DLS [°/100ft]	Comments
11361.00	89.940	358.950	6689.03	4457.57	4424.11	-636.87	3270603.88	1407709.63	40.4484921	-104.5276735	0.71	
11456.00	90.430	359.000	6688.72	4552.44	4519.10	-638.57	3270602.19	1407804.61	40.4487529	-104.5276758	0.52	
11550.00	90.550	358.980	6687.92	4646.31	4613.08	-640.23	3270600.53	1407898.58	40.4490109	-104.5276781	0.13	
11645.00	90.860	359.820	6686.75	4741.14	4708.06	-641.22	3270599.53	1407993.57	40.4492716	-104.5276779	0.94	
11739.00	90.740	358.530	6685.44	4834.99	4802.04	-642.57	3270598.18	1408087.54	40.4495296	-104.5276791	1.38	
11834.00	91.020	358.800	6683.98	4929.88	4897.01	-644.79	3270595.97	1408182.50	40.4497903	-104.5276833	0.41	
11929.00	89.850	358.810	6683.26	5024.76	4991.98	-646.77	3270593.99	1408277.47	40.4500511	-104.5276866	1.23	
12023.00	90.030	357.850	6683.36	5118.69	5085.94	-649.51	3270591.25	1408371.43	40.4503090	-104.5276928	1.04	
12118.00	90.370	359.790	6683.03	5213.57	5180.91	-651.46	3270589.29	1408466.40	40.4505698	-104.5276961	2.07	
12212.00	89.660	358.410	6683.00	5307.43	5274.90	-652.94	3270587.81	1408560.38	40.4508278	-104.5276977	1.65	
12307.00	90.430	358.440	6682.93	5402.35	5369.86	-655.55	3270585.20	1408655.34	40.4510885	-104.5277033	0.81	
12401.00	90.310	357.880	6682.32	5496.28	5463.81	-658.57	3270582.19	1408749.28	40.4513464	-104.5277105	0.61	
12496.00	90.250	358.570	6681.86	5591.21	5558.77	-661.51	3270579.24	1408844.23	40.4516072	-104.5277173	0.73	
12590.00	90.250	358.800	6681.44	5685.11	5652.74	-663.67	3270577.09	1408938.20	40.4518652	-104.5277213	0.24	
12685.00	89.780	358.960	6681.42	5779.99	5747.72	-665.53	3270575.23	1409033.18	40.4521259	-104.5277243	0.52	
12780.00	90.000	358.420	6681.60	5874.89	5842.70	-667.70	3270573.06	1409128.15	40.4523866	-104.5277283	0.61	
12874.00	90.250	358.830	6681.40	5968.79	5936.67	-669.95	3270570.80	1409222.12	40.4526446	-104.5277327	0.51	
12969.00	89.970	358.290	6681.22	6063.70	6031.64	-672.34	3270568.42	1409317.09	40.4529054	-104.5277376	0.64	
13063.00	89.750	357.600	6681.44	6157.65	6125.58	-675.71	3270565.04	1409411.02	40.4531633	-104.5277460	0.77	
13158.00	89.600	357.810	6681.98	6252.60	6220.50	-679.52	3270561.24	1409505.94	40.4534240	-104.5277559	0.27	
13252.00	89.570	356.830	6682.66	6346.58	6314.39	-683.91	3270556.85	1409599.83	40.4536818	-104.5277680	1.04	
13347.00	89.630	358.420	6683.33	6441.53	6409.31	-687.85	3270552.91	1409694.74	40.4539424	-104.5277784	1.67	
13442.00	89.820	0.290	6683.78	6536.37	6504.29	-688.92	3270551.84	1409789.72	40.4542032	-104.5277785	1.98	
13536.00	89.820	359.780	6684.08	6630.14	6598.29	-688.86	3270551.90	1409883.72	40.4544612	-104.5277746	0.54	
13631.00	89.880	358.740	6684.33	6724.99	6693.28	-690.09	3270550.67	1409978.71	40.4547219	-104.5277753	1.10	
13726.00	89.820	356.930	6684.58	6819.94	6788.21	-693.68	3270547.08	1410073.63	40.4549826	-104.5277844	1.91	
13820.00	89.850	356.100	6684.85	6913.93	6882.04	-699.39	3270541.37	1410167.45	40.4552403	-104.5278012	0.88	
13915.00	89.820	356.400	6685.12	7008.93	6976.83	-705.60	3270535.16	1410262.24	40.4555007	-104.5278198	0.32	
14010.00	89.880	358.640	6685.37	7103.89	7071.74	-709.71	3270531.04	1410357.14	40.4557613	-104.5278309	2.36	
14105.00	89.970	2.550	6685.49	7198.57	7166.71	-708.73	3270532.03	1410452.12	40.4560219	-104.5278236	4.12	

## REFERENCE WELLPATH IDENTIFICATION

Operator	NOBLE ENERGY, INC	Well	Reveille A34-714
Field	WELD COUNTY (NOBLE NAD 83 GRID)	API	0512350800
Facility	SEC.35-T06N-R64W	Wellbore	Reveille A34-714 AWB
Slot	SLOT#18 Reveille A34-714 (260'FSL & 338'FWL,SEC.35)		

## WELLPATH DATA (182 stations)

MD [ft]	Inclination [°]	Azimuth [°]	TVD [ft]	Vert Sect [ft]	North [ft]	East [ft]	Grid East [US ft]	Grid North [US ft]	Latitude	Longitude	DLS [°/100ft]	Comments
14199.00	90.000	1.800	6685.52	7292.03	7260.65	-705.16	3270535.60	1410546.05	40.4562796	-104.5278071	0.80	
14294.00	89.720	2.280	6685.75	7386.51	7355.58	-701.78	3270538.98	1410640.98	40.4565401	-104.5277912	0.58	
14388.00	89.940	2.630	6686.03	7479.92	7449.50	-697.75	3270543.01	1410734.89	40.4567977	-104.5277730	0.44	
14483.00	90.030	3.160	6686.05	7574.24	7544.38	-692.95	3270547.80	1410829.76	40.4570580	-104.5277520	0.57	
14578.00	89.940	2.670	6686.08	7668.55	7639.25	-688.12	3270552.64	1410924.64	40.4573183	-104.5277309	0.52	
14672.00	89.720	3.110	6686.36	7761.88	7733.13	-683.38	3270557.37	1411018.51	40.4575758	-104.5277102	0.52	
14767.00	89.880	3.110	6686.69	7856.16	7827.99	-678.23	3270562.53	1411113.37	40.4578360	-104.5276879	0.17	
14862.00	91.020	2.630	6685.94	7950.48	7922.87	-673.47	3270567.28	1411208.24	40.4580963	-104.5276671	1.30	
14956.00	90.370	359.060	6684.80	8044.12	8016.84	-672.09	3270568.67	1411302.21	40.4583541	-104.5276584	3.86	
15051.00	90.490	359.570	6684.09	8138.96	8111.83	-673.22	3270567.53	1411397.19	40.4586149	-104.5276588	0.55	
15146.00	90.370	359.820	6683.38	8233.77	8206.82	-673.73	3270567.03	1411492.18	40.4588757	-104.5276568	0.29	
15241.00	90.310	359.920	6682.81	8328.55	8301.82	-673.94	3270566.81	1411587.18	40.4591364	-104.5276539	0.12	
15335.00	90.310	359.890	6682.30	8422.34	8395.82	-674.10	3270566.66	1411681.17	40.4593944	-104.5276507	0.03	
15429.00	90.370	0.100	6681.75	8516.11	8489.82	-674.11	3270566.65	1411775.17	40.4596524	-104.5276471	0.23	
15524.00	89.820	0.740	6681.59	8610.83	8584.81	-673.41	3270567.35	1411870.16	40.4599131	-104.5276408	0.89	
15619.00	90.180	0.000	6681.59	8705.56	8679.81	-672.80	3270567.96	1411965.15	40.4601738	-104.5276349	0.87	
15713.00	90.150	359.880	6681.32	8799.34	8773.81	-672.90	3270567.86	1412059.15	40.4604318	-104.5276315	0.13	
15808.00	89.910	357.650	6681.27	8894.23	8868.78	-674.94	3270565.81	1412154.12	40.4606926	-104.5276351	2.36	
15903.00	89.660	358.370	6681.63	8989.17	8963.72	-678.24	3270562.51	1412249.05	40.4609533	-104.5276432	0.80	
15997.00	89.570	359.150	6682.26	9083.06	9057.70	-680.28	3270560.48	1412343.03	40.4612113	-104.5276469	0.84	
16092.00	89.780	358.460	6682.80	9177.95	9152.67	-682.26	3270558.50	1412438.00	40.4614720	-104.5276502	0.76	
16187.00	89.720	359.850	6683.21	9272.80	9247.66	-683.66	3270557.10	1412532.98	40.4617327	-104.5276515	1.46	
16281.00	89.690	359.410	6683.69	9366.61	9341.66	-684.27	3270556.49	1412626.97	40.4619908	-104.5276500	0.47	
16376.00	89.910	359.460	6684.03	9461.45	9436.65	-685.20	3270555.55	1412721.97	40.4622515	-104.5276496	0.24	
16470.00	90.060	359.880	6684.05	9555.26	9530.65	-685.74	3270555.01	1412815.96	40.4625095	-104.5276479	0.47	
16565.00	89.480	359.740	6684.43	9650.05	9625.65	-686.06	3270554.70	1412910.95	40.4627703	-104.5276452	0.63	
16660.00	89.600	359.010	6685.19	9744.88	9720.64	-687.10	3270553.66	1413005.94	40.4630310	-104.5276452	0.78	
16754.00	89.940	359.110	6685.57	9838.75	9814.63	-688.64	3270552.12	1413099.92	40.4632890	-104.5276471	0.38	
16849.00	89.720	359.030	6685.85	9933.62	9909.61	-690.18	3270550.58	1413194.91	40.4635498	-104.5276489	0.25	
16943.00	89.850	0.640	6686.21	10027.41	10003.61	-690.45	3270550.31	1413288.90	40.4638078	-104.5276461	1.72	

## REFERENCE WELLPATH IDENTIFICATION

Operator	NOBLE ENERGY, INC	Well	Reveille A34-714
Field	WELD COUNTY (NOBLE NAD 83 GRID)	API	0512350800
Facility	SEC.35-T06N-R64W	Wellbore	Reveille A34-714 AWB
Slot	SLOT#18 Reveille A34-714 (260'FSL & 338'FWL,SEC.35)		

## WELLPATH DATA (182 stations) † = interpolated, ‡ = extrapolated station

MD [ft]	Inclination [°]	Azimuth [°]	TVD [ft]	Vert Sect [ft]	North [ft]	East [ft]	Grid East [US ft]	Grid North [US ft]	Latitude	Longitude	DLS [°/100ft]	Comments
16991.00	90.180	1.080	6686.19	10075.24	10051.60	-689.73	3270551.03	1413336.89	40.4639395	-104.5276417	1.15	LAST BH MWD SURVEY
17015.00‡	90.180	1.080	6686.12	10099.14	10075.60	-689.28	3270551.48	1413360.89	40.4640054	-104.5276391	0.00	PROJECTION TO BIT

## HOLE & CASING SECTIONS - Ref Wellbore: Reveille A34-714 AWB Ref Wellpath: Reveille A34-714 AWP

String/Diameter	Start MD [ft]	End MD [ft]	Interval [ft]	Start TVD [ft]	End TVD [ft]	Start N/S [ft]	Start E/W [ft]	End N/S [ft]	End E/W [ft]
9.625in Casing Surface	30.00	1934.70	1904.70	30.00	1934.61	0.00	0.02	-7.06	-2.16

### REFERENCE WELLPATH IDENTIFICATION

Operator	NOBLE ENERGY, INC	Well	Reveille A34-714
Field	WELD COUNTY (NOBLE NAD 83 GRID)	API	0512350800
Facility	SEC.35-T06N-R64W	Wellbore	Reveille A34-714 AWB
Slot	SLOT#18 Reveille A34-714 (260'FSL & 338'FWL,SEC.35)		

### TARGETS

Name	TVD [ft]	North [ft]	East [ft]	Grid East [US ft]	Grid North [US ft]	Latitude	Longitude	Shape
SEC.26-T06N-R64W	18.00	246.56	-4117.24	3267123.65	1403532.24	40.4371300	-104.5403400	polygon
	2D Polygon: dimensions not calculated							
SEC.27-T06N-R64W	18.00	246.56	-4117.24	3267123.65	1403532.24	40.4371300	-104.5403400	polygon
	2D Polygon: dimensions not calculated							
SEC.34-T06N-R64W	18.00	246.56	-4117.24	3267123.65	1403532.24	40.4371300	-104.5403400	polygon
	2D Polygon: dimensions not calculated							
SEC.35-T06N-R64W	18.00	246.56	-4117.24	3267123.65	1403532.24	40.4371300	-104.5403400	polygon
	2D Polygon: dimensions not calculated							
Reveille A34-714 BHL REV-1 (200'FNL & 251'FEL,SEC.27)	6682.00	10083.73	-699.21	3270541.55	1413369.01	40.4640280	-104.5276745	point
Reveille A34-714 TPZ REV-1 (460'FSL & 259'FEL,SEC.34)	6708.00	191.12	-600.24	3270640.52	1403476.81	40.4368727	-104.5277086	point

### WELLPATH COMPOSITION - Ref Wellbore: Reveille A34-714 AWB Ref Wellpath: Reveille A34-714 AWP

Start MD [ft]	End MD [ft]	Positional Uncertainty Model	Log Name/Comment	Wellbore	Survey Date
0.00	1926.00	Gyrodatta 2015 - GC+DROP+COND	Gyrodatta 2015 - GC+DROP+COND 13-1/2" <82 - 1926>	Reveille A34-714 AWB	1/4/2021
1926.00	17015.00	OWSG MWD rev2 (MS+IFR1) NOBLE	OWSG MWD rev2 (MS+IFR1) NOBLE 8-1/2" <1996 - 16991>	Reveille A34-714 AWB	1/11/2021

## REFERENCE WELLPATH IDENTIFICATION

Operator	NOBLE ENERGY, INC	Well	Reveille A34-714
Field	WELD COUNTY (NOBLE NAD 83 GRID)	API	0512350800
Facility	SEC.35-T06N-R64W	Wellbore	Reveille A34-714 AWB
Slot	SLOT#18 Reveille A34-714 (260'FSL & 338'FWL,SEC.35)		

## WELLPATH COMMENTS

MD [ft]	Inclination [°]	Azimuth [°]	TVD [ft]	Comment
82.00	0.230	100.790	82.00	FIRST GYRODATA SURVEY
1926.00	1.420	182.990	1925.91	LAST GYRODATA SURVEY
1996.00	1.090	161.480	1995.89	FIRST BH MWD SURVEY
16991.00	90.180	1.080	6686.19	LAST BH MWD SURVEY
17015.00	90.180	1.080	6686.12	PROJECTION TO BIT