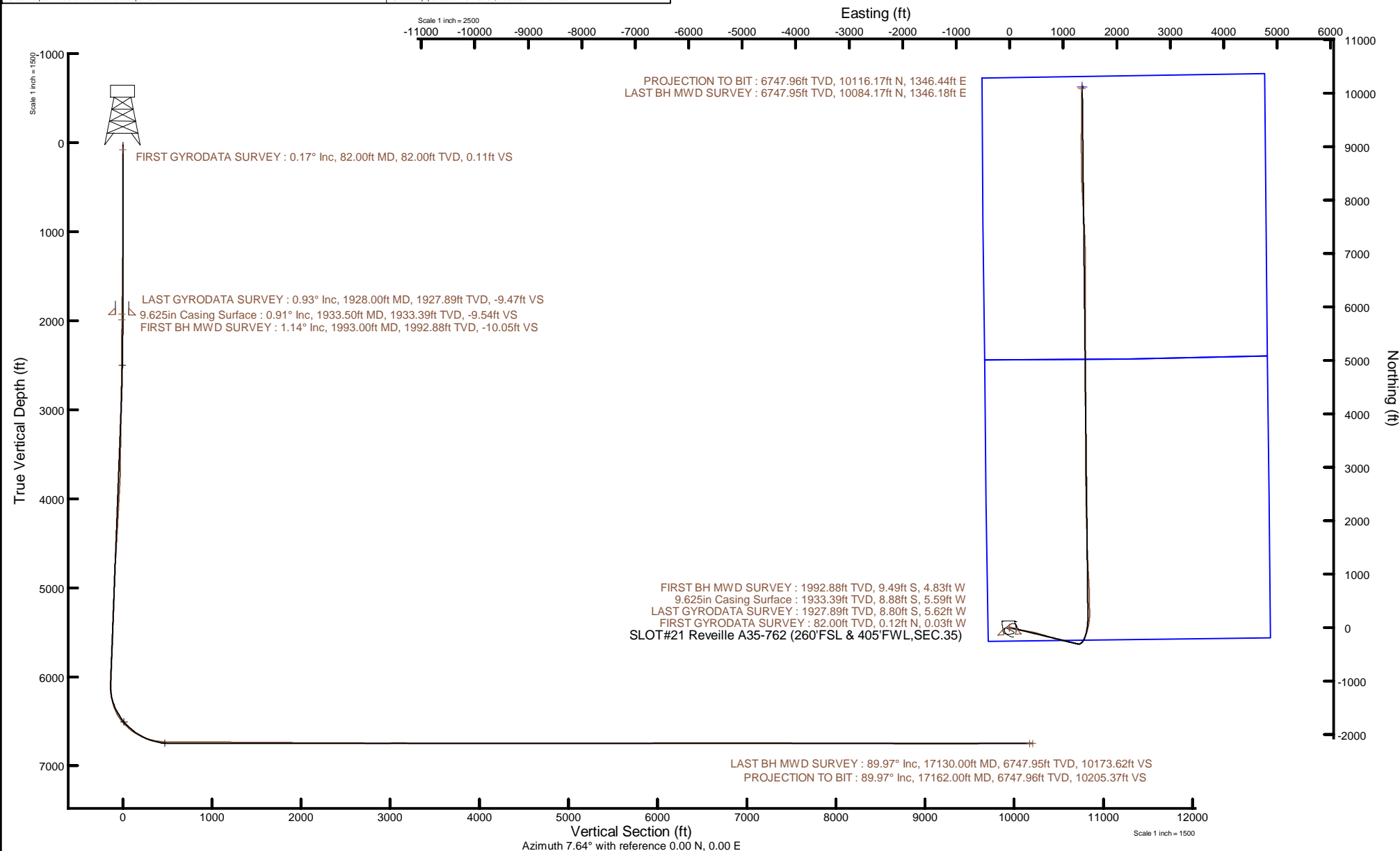


NOBLE ENERGY, INC



Location: COLORADO Slot: SLOT#21 Reveille A35-762 (260'FSL & 405'FWL, SEC.35)
Field: WELD COUNTY (NOBLE NAD 83 GRID) Well: Reveille A35-762
Facility: SEC.35-T06N-R64W Wellbore: Reveille A35-762 PWB

Plot reference wellpath is Reveille A35-762 PWP Rev-A.0	Grid System: NAD83 / Lambert Colorado SP, Northern Zone (501), US feet
True vertical depths are referenced to H&P 517 (30) (RT)	North Reference: Grid north
Reference wellpath measured depths are referenced to H&P 517 (30) (RT)	Scale: True distance
H&P 517 (30) (RT) to Mean Sea Level: 4677 feet	Coordinates are in feet referenced to Slot
Mean Sea Level to Mud line (At Slot: SLOT#21 Reveille A35-762 (260'FSL & 405'FWL, SEC.35)): 0 feet	Depths are in feet
Offset wellpath MDs are referenced to each path's default MD datum	Created by: painsetr on 2021-01-31; Database: WellArchitectDB



REFERENCE WELLPATH IDENTIFICATION

Operator	NOBLE ENERGY, INC	Well	Reveille A35-762
Field	WELD COUNTY (NOBLE NAD 83 GRID)	API	0512350798
Facility	SEC.35-T06N-R64W	Wellbore	Reveille A35-762 AWB
Slot	SLOT#21 Reveille A35-762 (260'FSL & 405'FWL,SEC.35)		

REPORT SETUP INFORMATION

Projection System	NAD83 / Lambert Colorado SP, Northern Zone (501), US feet	Software System	WellArchitect® 6.0
North Reference	Grid	User	Painsetr
Scale	0.999962	Report Generated	1/31/2021 at 6:48:18 AM
Convergence at slot	0.63° East	Database	WellArchitectDB

WELLPATH LOCATION

	Local coordinates		Grid coordinates		Geographic coordinates	
	North[ft]	East[ft]	Easting[US ft]	Northing[US ft]	Latitude	Longitude
Slot Location	-1916.40	-31.27	3271307.54	1403286.40	40.4363299°	-104.5253200°
Facility Reference Pt			3271338.81	1405202.72	40.4415890°	-104.5251320°
Field Reference Pt			3000000.00	4454105.15	48.7761986°	-105.5000000°

WELLPATH DATUM

Calculation method	Minimum curvature	H&P 517 (30') (RT) to Facility Vertical Datum	4677.00ft
Horizontal Reference Pt	Slot	H&P 517 (30') (RT) to Mean Sea Level	4677.00ft
Vertical Reference Pt	H&P 517 (30') (RT)	H&P 517 (30') (RT) to Mud Line at Slot (SLOT#21 Reveille A35-762 (260'FSL & 405'FWL,SEC.35))	4677.00ft
MD Reference Pt	H&P 517 (30') (RT)	Section Origin	N 0.00, E 0.00 ft
Field Vertical Reference	Mean Sea Level	Section Azimuth	7.64°

REFERENCE WELLPATH IDENTIFICATION

Operator	NOBLE ENERGY, INC	Well	Reveille A35-762
Field	WELD COUNTY (NOBLE NAD 83 GRID)	API	0512350798
Facility	SEC.35-T06N-R64W	Wellbore	Reveille A35-762 AWB
Slot	SLOT#21 Reveille A35-762 (260'FSL & 405'FWL,SEC.35)		

WELLPATH DATA (182 stations)

MD [ft]	Inclination [°]	Azimuth [°]	TVD [ft]	Vert Sect [ft]	North [ft]	East [ft]	Grid East [US ft]	Grid North [US ft]	Latitude	Longitude	DLS [°/100ft]	Comments
0.00	0.000	343.580	0.00	0.00	0.00	0.00	3271307.54	1403286.40	40.4363299	-104.5253200	0.00	
82.00	0.170	343.580	82.00	0.11	0.12	-0.03	3271307.51	1403286.52	40.4363303	-104.5253201	0.21	FIRST GYRODATA SURVEY
175.00	0.240	352.970	175.00	0.43	0.44	-0.10	3271307.44	1403286.84	40.4363312	-104.5253203	0.08	
266.00	0.060	323.590	266.00	0.64	0.67	-0.15	3271307.39	1403287.07	40.4363318	-104.5253205	0.21	
361.00	0.170	197.070	361.00	0.54	0.58	-0.22	3271307.32	1403286.98	40.4363315	-104.5253208	0.22	
455.00	0.450	317.220	455.00	0.64	0.71	-0.51	3271307.03	1403287.11	40.4363319	-104.5253218	0.59	
550.00	0.330	306.110	550.00	1.01	1.15	-0.99	3271306.55	1403287.55	40.4363331	-104.5253235	0.15	
645.00	0.490	278.870	644.99	1.15	1.37	-1.61	3271305.93	1403287.77	40.4363338	-104.5253257	0.26	
739.00	0.480	230.370	738.99	0.87	1.18	-2.31	3271305.23	1403287.58	40.4363333	-104.5253282	0.42	
834.00	0.440	260.100	833.99	0.46	0.87	-2.97	3271304.57	1403287.27	40.4363324	-104.5253306	0.25	
928.00	0.570	281.220	927.98	0.38	0.89	-3.79	3271303.75	1403287.29	40.4363325	-104.5253336	0.24	
1023.00	0.540	259.650	1022.98	0.27	0.91	-4.69	3271302.85	1403287.31	40.4363326	-104.5253368	0.22	
1118.00	0.570	251.730	1117.98	-0.07	0.68	-5.58	3271301.96	1403287.08	40.4363320	-104.5253400	0.09	
1213.00	0.100	284.290	1212.97	-0.27	0.55	-6.11	3271301.43	1403286.95	40.4363316	-104.5253419	0.51	
1307.00	0.530	147.420	1306.97	-0.59	0.20	-5.96	3271301.58	1403286.60	40.4363307	-104.5253414	0.65	
1402.00	0.450	161.330	1401.97	-1.26	-0.52	-5.60	3271301.94	1403285.88	40.4363287	-104.5253401	0.15	
1497.00	0.480	170.240	1496.97	-1.97	-1.27	-5.41	3271302.13	1403285.13	40.4363266	-104.5253395	0.08	
1592.00	0.570	186.500	1591.96	-2.83	-2.13	-5.40	3271302.14	1403284.27	40.4363243	-104.5253395	0.18	
1686.00	1.210	178.610	1685.95	-4.27	-3.58	-5.43	3271302.11	1403282.82	40.4363203	-104.5253396	0.69	
1781.00	1.460	180.210	1780.92	-6.46	-5.80	-5.41	3271302.13	1403280.60	40.4363142	-104.5253396	0.27	
1876.00	1.120	194.090	1875.90	-8.59	-7.91	-5.64	3271301.90	1403278.49	40.4363084	-104.5253406	0.48	
1928.00	0.930	160.340	1927.89	-9.47	-8.80	-5.62	3271301.92	1403277.60	40.4363060	-104.5253405	1.20	LAST GYRODATA SURVEY
1993.00	1.140	107.640	1992.88	-10.05	-9.49	-4.83	3271302.71	1403276.91	40.4363040	-104.5253377	1.44	FIRST BH MWD SURVEY
2088.00	2.700	102.000	2087.83	-10.38	-10.24	-1.74	3271305.80	1403276.16	40.4363019	-104.5253266	1.65	
2182.00	4.350	100.790	2181.65	-10.75	-11.37	3.93	3271311.47	1403275.03	40.4362986	-104.5253063	1.76	
2277.00	5.710	100.790	2276.28	-11.20	-12.93	12.11	3271319.65	1403273.47	40.4362941	-104.5252770	1.43	
2372.00	7.000	101.130	2370.69	-11.82	-14.93	22.44	3271329.97	1403271.47	40.4362883	-104.5252400	1.36	
2466.00	8.720	100.250	2463.80	-12.49	-17.31	35.07	3271342.61	1403269.10	40.4362814	-104.5251947	1.83	
2561.00	10.300	100.250	2557.50	-13.21	-20.10	50.51	3271358.05	1403266.30	40.4362733	-104.5251393	1.66	
2655.00	12.210	101.040	2649.68	-14.18	-23.50	68.54	3271376.08	1403262.90	40.4362634	-104.5250747	2.04	

REFERENCE WELLPATH IDENTIFICATION

Operator	NOBLE ENERGY, INC	Well	Reveille A35-762
Field	WELD COUNTY (NOBLE NAD 83 GRID)	API	0512350798
Facility	SEC.35-T06N-R64W	Wellbore	Reveille A35-762 AWB
Slot	SLOT#21 Reveille A35-762 (260'FSL & 405'FWL,SEC.35)		

WELLPATH DATA (182 stations)

MD [ft]	Inclination [°]	Azimuth [°]	TVD [ft]	Vert Sect [ft]	North [ft]	East [ft]	Grid East [US ft]	Grid North [US ft]	Latitude	Longitude	DLS [°/100ft]	Comments
2750.00	16.260	100.710	2741.75	-15.49	-27.89	91.48	3271399.01	1403258.51	40.4362506	-104.5249925	4.26	
2845.00	17.480	100.590	2832.66	-16.93	-32.99	118.57	3271426.11	1403253.41	40.4362358	-104.5248954	1.28	
2939.00	20.310	99.140	2921.58	-18.09	-38.18	148.56	3271456.10	1403248.23	40.4362207	-104.5247878	3.05	
3034.00	19.720	100.890	3010.85	-19.43	-43.82	180.58	3271488.11	1403242.58	40.4362042	-104.5246731	0.88	
3128.00	17.880	101.230	3099.83	-21.23	-49.63	210.31	3271517.84	1403236.77	40.4361874	-104.5245665	1.96	
3223.00	17.760	100.530	3190.27	-22.88	-55.12	238.86	3271546.39	1403231.28	40.4361715	-104.5244642	0.26	
3318.00	19.810	98.970	3280.21	-23.98	-60.28	269.01	3271576.54	1403226.13	40.4361564	-104.5243561	2.22	
3412.00	20.210	99.120	3368.53	-24.77	-65.33	300.77	3271608.30	1403221.07	40.4361415	-104.5242422	0.43	
3507.00	20.080	101.290	3457.72	-26.23	-71.13	332.97	3271640.50	1403215.28	40.4361247	-104.5241267	0.80	
3602.00	21.090	98.830	3546.66	-27.63	-76.94	365.85	3271673.38	1403209.46	40.4361077	-104.5240089	1.40	
3696.00	20.670	99.280	3634.48	-28.45	-82.21	398.94	3271706.46	1403204.19	40.4360922	-104.5238902	0.48	
3791.00	20.630	100.260	3723.38	-29.70	-87.90	431.95	3271739.48	1403198.50	40.4360756	-104.5237719	0.37	
3885.00	20.710	105.890	3811.34	-32.84	-95.40	464.24	3271771.76	1403191.00	40.4360541	-104.5236562	2.12	
3980.00	20.280	105.780	3900.32	-37.59	-104.48	496.24	3271803.76	1403181.93	40.4360282	-104.5235416	0.45	
4075.00	20.510	105.870	3989.37	-42.30	-113.51	528.09	3271835.61	1403172.90	40.4360025	-104.5234275	0.24	
4169.00	20.480	106.110	4077.42	-47.08	-122.57	559.73	3271867.24	1403163.83	40.4359766	-104.5233142	0.09	
4264.00	20.570	106.100	4166.39	-51.98	-131.81	591.73	3271899.24	1403154.59	40.4359503	-104.5231997	0.09	
4358.00	20.260	106.770	4254.48	-57.00	-141.09	623.18	3271930.69	1403145.32	40.4359239	-104.5230871	0.41	
4453.00	20.600	106.120	4343.51	-62.07	-150.47	654.98	3271962.49	1403135.93	40.4358972	-104.5229732	0.43	
4548.00	20.670	106.660	4432.41	-67.16	-159.92	687.10	3271994.61	1403126.49	40.4358703	-104.5228582	0.21	
4642.00	20.200	107.440	4520.50	-72.53	-169.54	718.48	3272025.99	1403116.87	40.4358429	-104.5227459	0.58	
4737.00	20.260	106.850	4609.64	-77.95	-179.22	749.87	3272057.38	1403107.18	40.4358154	-104.5226335	0.22	
4832.00	20.410	106.070	4698.72	-83.01	-188.58	781.53	3272089.04	1403097.83	40.4357887	-104.5225201	0.33	
4926.00	20.260	104.150	4786.86	-87.26	-197.09	813.06	3272120.57	1403089.32	40.4357644	-104.5224072	0.73	
5020.00	20.850	103.020	4874.88	-90.68	-204.84	845.14	3272152.64	1403081.57	40.4357422	-104.5222923	0.76	
5115.00	20.440	104.150	4963.77	-94.14	-212.70	877.70	3272185.20	1403073.70	40.4357196	-104.5221757	0.60	
5209.00	18.380	102.500	5052.43	-97.26	-219.93	908.08	3272215.59	1403066.48	40.4356989	-104.5220668	2.27	
5304.00	16.670	104.690	5143.02	-100.20	-226.62	935.89	3272243.39	1403059.79	40.4356796	-104.5219672	1.93	
5398.00	18.320	104.090	5232.67	-103.52	-233.64	963.26	3272270.76	1403052.77	40.4356596	-104.5218691	1.77	
5492.00	18.730	104.070	5321.79	-106.87	-240.90	992.23	3272299.73	1403045.51	40.4356387	-104.5217654	0.44	

REFERENCE WELLPATH IDENTIFICATION

Operator	NOBLE ENERGY, INC	Well	Reveille A35-762
Field	WELD COUNTY (NOBLE NAD 83 GRID)	API	0512350798
Facility	SEC.35-T06N-R64W	Wellbore	Reveille A35-762 AWB
Slot	SLOT#21 Reveille A35-762 (260'FSL & 405'FWL,SEC.35)		

WELLPATH DATA (182 stations)

MD [ft]	Inclination [°]	Azimuth [°]	TVD [ft]	Vert Sect [ft]	North [ft]	East [ft]	Grid East [US ft]	Grid North [US ft]	Latitude	Longitude	DLS [°/100ft]	Comments
5587.00	20.430	102.650	5411.30	-110.03	-248.24	1023.20	3272330.70	1403038.17	40.4356177	-104.5216544	1.86	
5682.00	19.830	103.200	5500.49	-113.04	-255.55	1055.07	3272362.57	1403030.86	40.4355966	-104.5215402	0.66	
5776.00	19.890	104.580	5588.90	-116.51	-263.22	1086.07	3272393.57	1403023.19	40.4355746	-104.5214292	0.50	
5871.00	20.450	103.330	5678.08	-120.11	-271.12	1117.86	3272425.35	1403015.30	40.4355520	-104.5213153	0.74	
5965.00	20.470	103.650	5766.15	-123.46	-278.78	1149.81	3272457.30	1403007.63	40.4355300	-104.5212008	0.12	
6060.00	20.380	103.940	5855.18	-127.02	-286.69	1182.01	3272489.50	1402999.73	40.4355073	-104.5210855	0.14	
6155.00	19.980	103.900	5944.34	-130.60	-294.57	1213.82	3272521.31	1402991.84	40.4354847	-104.5209715	0.42	
6249.00	19.350	103.550	6032.86	-133.96	-302.08	1244.54	3272552.03	1402984.34	40.4354632	-104.5208615	0.68	
6344.00	20.920	95.280	6122.07	-134.88	-307.33	1276.74	3272584.23	1402979.09	40.4354478	-104.5207460	3.42	
6439.00	20.060	77.250	6211.15	-128.50	-305.29	1309.56	3272617.04	1402981.12	40.4354524	-104.5206281	6.68	
6533.00	19.740	48.780	6299.74	-110.89	-291.24	1337.28	3272644.77	1402995.17	40.4354901	-104.5205279	10.22	
6627.00	27.200	35.220	6385.97	-79.82	-263.17	1361.67	3272669.15	1403023.24	40.4355664	-104.5204392	9.75	
6722.00	36.500	27.740	6466.61	-33.93	-220.31	1387.41	3272694.89	1403066.10	40.4356833	-104.5203450	10.62	
6817.00	45.200	22.470	6538.42	25.32	-164.03	1413.50	3272720.98	1403122.37	40.4358370	-104.5202491	9.84	
6911.00	52.800	17.910	6600.06	94.52	-97.47	1437.80	3272745.28	1403188.93	40.4360189	-104.5201592	8.87	
7006.00	61.550	12.830	6651.53	173.53	-20.57	1458.76	3272766.24	1403265.83	40.4362294	-104.5200808	10.24	
7101.00	70.380	10.140	6690.19	260.00	64.38	1475.95	3272783.43	1403350.78	40.4364620	-104.5200157	9.65	
7196.00	77.590	6.080	6716.40	351.23	154.70	1488.76	3272796.24	1403441.10	40.4367095	-104.5199661	8.63	
7290.00	85.750	0.730	6730.01	443.87	247.44	1494.23	3272801.71	1403533.83	40.4369639	-104.5199427	10.34	
7385.00	89.690	357.120	6733.79	537.66	342.31	1492.45	3272799.93	1403628.70	40.4372243	-104.5199454	5.62	
7574.00	89.910	359.560	6734.45	724.17	531.22	1486.97	3272794.45	1403817.60	40.4377430	-104.5199576	1.30	
7669.00	90.430	359.840	6734.17	818.25	626.21	1486.47	3272793.96	1403912.59	40.4380038	-104.5199556	0.62	
7764.00	90.340	358.410	6733.53	912.20	721.20	1485.02	3272792.50	1404007.57	40.4382645	-104.5199570	1.51	
7859.00	89.910	356.480	6733.33	1005.70	816.10	1480.79	3272788.27	1404102.47	40.4385251	-104.5199685	2.08	
7953.00	89.600	356.750	6733.73	1097.96	909.93	1475.24	3272782.72	1404196.30	40.4387828	-104.5199847	0.44	
8048.00	89.230	356.470	6734.70	1191.20	1004.76	1469.62	3272777.10	1404291.12	40.4390433	-104.5200011	0.49	
8142.00	89.350	357.280	6735.86	1283.54	1098.62	1464.50	3272771.98	1404384.97	40.4393010	-104.5200158	0.87	
8237.00	89.750	357.090	6736.61	1376.96	1193.50	1459.83	3272767.31	1404479.85	40.4395616	-104.5200288	0.47	
8331.00	89.350	357.270	6737.35	1469.40	1287.38	1455.21	3272762.69	1404573.73	40.4398194	-104.5200416	0.47	
8426.00	89.820	358.710	6738.03	1563.05	1382.32	1451.88	3272759.36	1404668.66	40.4400801	-104.5200498	1.59	

REFERENCE WELLPATH IDENTIFICATION

Operator	NOBLE ENERGY, INC	Well	Reveille A35-762
Field	WELD COUNTY (NOBLE NAD 83 GRID)	API	0512350798
Facility	SEC.35-T06N-R64W	Wellbore	Reveille A35-762 AWB
Slot	SLOT#21 Reveille A35-762 (260'FSL & 405'FWL,SEC.35)		

WELLPATH DATA (182 stations)

MD [ft]	Inclination [°]	Azimuth [°]	TVD [ft]	Vert Sect [ft]	North [ft]	East [ft]	Grid East [US ft]	Grid North [US ft]	Latitude	Longitude	DLS [°/100ft]	Comments
8521.00	89.420	358.920	6738.66	1656.92	1477.29	1449.91	3272757.39	1404763.63	40.4403408	-104.5200531	0.48	
8616.00	89.820	358.790	6739.29	1750.80	1572.27	1448.01	3272755.50	1404858.61	40.4406016	-104.5200562	0.44	
8711.00	89.660	358.840	6739.73	1844.68	1667.25	1446.05	3272753.53	1404953.58	40.4408623	-104.5200595	0.18	
8805.00	89.600	358.880	6740.33	1937.58	1761.23	1444.18	3272751.66	1405047.56	40.4411203	-104.5200624	0.08	
8900.00	89.820	358.840	6740.81	2031.46	1856.21	1442.29	3272749.77	1405142.54	40.4413811	-104.5200655	0.24	
8995.00	89.690	359.160	6741.22	2125.38	1951.20	1440.63	3272748.11	1405237.52	40.4416418	-104.5200677	0.36	
9089.00	89.510	358.940	6741.88	2218.33	2045.18	1439.07	3272746.55	1405331.50	40.4418998	-104.5200695	0.30	
9184.00	89.230	358.480	6742.92	2312.17	2140.15	1436.93	3272744.42	1405426.46	40.4421606	-104.5200734	0.57	
9279.00	89.850	358.790	6743.68	2405.99	2235.12	1434.67	3272742.15	1405521.43	40.4424213	-104.5200778	0.73	
9373.00	89.750	358.800	6744.01	2498.88	2329.10	1432.69	3272740.18	1405615.40	40.4426793	-104.5200812	0.11	
9468.00	89.750	358.580	6744.43	2592.72	2424.07	1430.52	3272738.00	1405710.38	40.4429401	-104.5200852	0.23	
9562.00	89.690	358.820	6744.89	2685.58	2518.05	1428.39	3272735.87	1405804.35	40.4431981	-104.5200891	0.26	
9657.00	89.200	358.600	6745.81	2779.42	2613.02	1426.25	3272733.73	1405899.31	40.4434588	-104.5200930	0.57	
9751.00	90.770	359.700	6745.83	2872.39	2707.00	1424.86	3272732.34	1405993.29	40.4437168	-104.5200943	2.04	
9846.00	90.090	359.270	6745.12	2966.42	2802.00	1424.00	3272731.49	1406088.28	40.4439775	-104.5200936	0.85	
9940.00	90.250	1.000	6744.84	3059.61	2895.99	1424.22	3272731.71	1406182.28	40.4442355	-104.5200891	1.85	
10035.00	89.750	359.440	6744.84	3153.81	2990.99	1424.59	3272732.07	1406277.27	40.4444963	-104.5200840	1.72	
10130.00	89.380	359.590	6745.56	3247.86	3085.98	1423.78	3272731.27	1406372.26	40.4447570	-104.5200831	0.42	
10224.00	89.970	359.400	6746.09	3340.91	3179.98	1422.96	3272730.44	1406466.25	40.4450150	-104.5200824	0.66	
10319.00	90.490	359.680	6745.71	3434.96	3274.97	1422.19	3272729.68	1406561.24	40.4452758	-104.5200813	0.62	
10414.00	89.600	359.800	6745.64	3529.06	3369.97	1421.76	3272729.25	1406656.23	40.4455365	-104.5200791	0.95	
10508.00	89.750	359.470	6746.17	3622.14	3463.97	1421.16	3272728.65	1406750.23	40.4457945	-104.5200775	0.39	
10603.00	89.750	359.670	6746.58	3716.20	3558.96	1420.45	3272727.93	1406845.22	40.4460553	-104.5200763	0.21	
10697.00	90.430	0.320	6746.44	3809.36	3652.96	1420.44	3272727.93	1406939.22	40.4463133	-104.5200726	1.00	
10792.00	89.080	358.680	6746.84	3903.40	3747.95	1419.61	3272727.10	1407034.20	40.4465740	-104.5200718	2.24	
10886.00	90.090	359.860	6747.52	3996.39	3841.94	1418.42	3272725.90	1407128.18	40.4468321	-104.5200724	1.65	
10981.00	89.540	359.650	6747.83	4090.49	3936.94	1418.01	3272725.49	1407223.18	40.4470928	-104.5200701	0.62	
11075.00	90.000	0.040	6748.21	4183.62	4030.93	1417.76	3272725.24	1407317.17	40.4473508	-104.5200673	0.64	
11170.00	89.720	359.660	6748.44	4277.75	4125.93	1417.51	3272724.99	1407412.17	40.4476116	-104.5200644	0.50	
11265.00	90.090	0.080	6748.60	4371.87	4220.93	1417.29	3272724.77	1407507.16	40.4478723	-104.5200614	0.59	

REFERENCE WELLPATH IDENTIFICATION

Operator	NOBLE ENERGY, INC	Well	Reveille A35-762
Field	WELD COUNTY (NOBLE NAD 83 GRID)	API	0512350798
Facility	SEC.35-T06N-R64W	Wellbore	Reveille A35-762 AWB
Slot	SLOT#21 Reveille A35-762 (260'FSL & 405'FWL,SEC.35)		

WELLPATH DATA (182 stations)

MD [ft]	Inclination [°]	Azimuth [°]	TVD [ft]	Vert Sect [ft]	North [ft]	East [ft]	Grid East [US ft]	Grid North [US ft]	Latitude	Longitude	DLS [°/100ft]	Comments
11359.00	89.420	359.820	6749.00	4465.03	4314.93	1417.21	3272724.69	1407601.16	40.4481303	-104.5200579	0.76	
11453.00	90.150	359.620	6749.35	4558.13	4408.93	1416.75	3272724.23	1407695.15	40.4483883	-104.5200559	0.81	
11548.00	90.090	359.800	6749.15	4652.22	4503.93	1416.27	3272723.75	1407790.15	40.4486491	-104.5200538	0.20	
11643.00	90.060	0.060	6749.03	4746.36	4598.93	1416.15	3272723.64	1407885.14	40.4489098	-104.5200505	0.28	
11737.00	89.780	359.400	6749.16	4839.47	4692.93	1415.71	3272723.19	1407979.14	40.4491678	-104.5200483	0.76	
11832.00	90.090	0.160	6749.27	4933.57	4787.92	1415.35	3272722.83	1408074.13	40.4494286	-104.5200459	0.86	
11927.00	90.180	359.930	6749.04	5027.74	4882.92	1415.42	3272722.90	1408169.13	40.4496893	-104.5200418	0.26	
12021.00	90.150	0.200	6748.77	5120.92	4976.92	1415.53	3272723.01	1408263.12	40.4499473	-104.5200377	0.29	
12115.00	90.090	359.410	6748.58	5214.04	5070.92	1415.21	3272722.69	1408357.12	40.4502053	-104.5200351	0.84	
12210.00	90.220	359.320	6748.32	5308.05	5165.92	1414.15	3272721.64	1408452.11	40.4504661	-104.5200351	0.17	
12304.00	90.890	359.900	6747.41	5401.13	5259.91	1413.51	3272721.00	1408546.10	40.4507241	-104.5200337	0.94	
12399.00	89.850	359.430	6746.80	5495.20	5354.90	1412.96	3272720.44	1408641.09	40.4509849	-104.5200319	1.20	
12493.00	89.780	359.320	6747.10	5588.23	5448.90	1411.93	3272719.42	1408735.08	40.4512429	-104.5200319	0.14	
12588.00	89.850	359.110	6747.41	5682.20	5543.89	1410.63	3272718.12	1408830.07	40.4515036	-104.5200328	0.23	
12683.00	90.030	0.420	6747.51	5776.30	5638.88	1410.24	3272717.73	1408925.06	40.4517644	-104.5200304	1.39	
12777.00	91.140	0.230	6746.55	5869.53	5732.88	1410.77	3272718.26	1409019.05	40.4520224	-104.5200248	1.20	
12872.00	91.140	1.430	6744.66	5963.84	5827.85	1412.15	3272719.63	1409114.01	40.4522830	-104.5200161	1.26	
12966.00	89.540	359.930	6744.10	6057.14	5921.83	1413.27	3272720.75	1409208.00	40.4525409	-104.5200083	2.33	
13061.00	89.940	359.590	6744.53	6151.25	6016.83	1412.87	3272720.35	1409302.99	40.4528017	-104.5200060	0.55	
13155.00	90.650	0.110	6744.04	6244.38	6110.83	1412.62	3272720.11	1409396.98	40.4530597	-104.5200031	0.94	
13250.00	89.750	359.480	6743.71	6338.49	6205.82	1412.28	3272719.77	1409491.98	40.4533204	-104.5200006	1.16	
13345.00	89.690	359.690	6744.18	6432.55	6300.82	1411.59	3272719.08	1409586.97	40.4535812	-104.5199993	0.23	
13439.00	90.310	0.250	6744.18	6525.71	6394.82	1411.54	3272719.03	1409680.96	40.4538392	-104.5199957	0.89	
13534.00	90.090	0.100	6743.85	6619.90	6489.82	1411.84	3272719.32	1409775.96	40.4540999	-104.5199909	0.28	
13629.00	90.030	359.790	6743.75	6714.04	6584.82	1411.74	3272719.23	1409870.96	40.4543607	-104.5199875	0.33	
13723.00	89.750	359.960	6743.93	6807.18	6678.82	1411.54	3272719.02	1409964.95	40.4546187	-104.5199845	0.35	
13818.00	89.720	0.070	6744.37	6901.34	6773.82	1411.56	3272719.05	1410059.95	40.4548794	-104.5199806	0.12	
13913.00	90.030	0.090	6744.57	6995.52	6868.82	1411.70	3272719.18	1410154.94	40.4551401	-104.5199763	0.33	
14007.00	90.030	0.100	6744.52	7088.70	6962.82	1411.85	3272719.34	1410248.94	40.4553981	-104.5199721	0.01	
14102.00	90.180	358.640	6744.35	7182.71	7057.81	1410.81	3272718.29	1410343.93	40.4556589	-104.5199720	1.54	

REFERENCE WELLPATH IDENTIFICATION

Operator	NOBLE ENERGY, INC	Well	Reveille A35-762
Field	WELD COUNTY (NOBLE NAD 83 GRID)	API	0512350798
Facility	SEC.35-T06N-R64W	Wellbore	Reveille A35-762 AWB
Slot	SLOT#21 Reveille A35-762 (260'FSL & 405'FWL,SEC.35)		

WELLPATH DATA (182 stations)

MD [ft]	Inclination [°]	Azimuth [°]	TVD [ft]	Vert Sect [ft]	North [ft]	East [ft]	Grid East [US ft]	Grid North [US ft]	Latitude	Longitude	DLS [°/100ft]	Comments
14197.00	89.600	357.960	6744.53	7276.45	7152.77	1407.99	3272715.47	1410438.88	40.4559196	-104.5199784	0.94	
14291.00	90.150	358.210	6744.74	7369.15	7246.71	1404.85	3272712.33	1410532.82	40.4561776	-104.5199859	0.64	
14386.00	89.780	357.390	6744.80	7462.75	7341.64	1401.20	3272708.69	1410627.75	40.4564382	-104.5199953	0.95	
14481.00	89.290	357.390	6745.57	7556.23	7436.54	1396.88	3272704.36	1410722.64	40.4566988	-104.5200071	0.52	
14575.00	89.350	357.570	6746.68	7648.75	7530.44	1392.74	3272700.23	1410816.54	40.4569567	-104.5200182	0.20	
14670.00	89.630	356.430	6747.53	7742.11	7625.31	1387.77	3272695.26	1410911.40	40.4572172	-104.5200323	1.24	
14765.00	90.060	357.520	6747.78	7835.47	7720.17	1382.76	3272690.24	1411006.26	40.4574777	-104.5200465	1.23	
14859.00	89.820	357.640	6747.88	7928.02	7814.09	1378.79	3272686.27	1411100.18	40.4577356	-104.5200570	0.29	
14954.00	90.150	356.670	6747.91	8021.44	7908.97	1374.07	3272681.56	1411195.05	40.4579962	-104.5200702	1.08	
15049.00	89.450	355.670	6748.24	8114.54	8003.75	1367.73	3272675.21	1411289.84	40.4582565	-104.5200893	1.28	
15143.00	89.780	356.820	6748.87	8206.68	8097.55	1361.57	3272669.06	1411383.63	40.4585142	-104.5201077	1.27	
15238.00	90.090	357.080	6748.98	8300.03	8192.41	1356.52	3272664.00	1411478.49	40.4587747	-104.5201221	0.43	
15333.00	89.720	357.700	6749.14	8393.52	8287.31	1352.19	3272659.68	1411573.38	40.4590353	-104.5201338	0.76	
15427.00	89.940	358.690	6749.42	8486.24	8381.27	1349.23	3272656.72	1411667.33	40.4592933	-104.5201407	1.08	
15616.00	89.600	358.880	6750.17	8672.99	8570.22	1345.22	3272652.71	1411856.28	40.4598120	-104.5201476	0.21	
15711.00	89.780	359.290	6750.69	8766.93	8665.21	1343.71	3272651.19	1411951.26	40.4600728	-104.5201493	0.47	
15805.00	90.030	359.860	6750.84	8860.00	8759.21	1343.01	3272650.50	1412045.26	40.4603308	-104.5201481	0.66	
15900.00	89.630	359.720	6751.13	8954.11	8854.20	1342.66	3272650.15	1412140.25	40.4605915	-104.5201456	0.45	
15995.00	89.940	359.830	6751.48	9048.21	8949.20	1342.29	3272649.77	1412235.25	40.4608523	-104.5201431	0.35	
16089.00	89.820	0.050	6751.68	9141.36	9043.20	1342.19	3272649.68	1412329.24	40.4611103	-104.5201398	0.27	
16184.00	89.750	359.670	6752.04	9235.49	9138.20	1341.96	3272649.44	1412424.24	40.4613710	-104.5201368	0.41	
16279.00	90.770	0.860	6751.60	9329.70	9233.20	1342.40	3272649.88	1412519.23	40.4616318	-104.5201315	1.65	
16373.00	90.490	0.460	6750.57	9423.00	9327.18	1343.48	3272650.97	1412613.21	40.4618897	-104.5201238	0.52	
16468.00	89.970	0.560	6750.19	9517.26	9422.18	1344.32	3272651.81	1412708.20	40.4621504	-104.5201170	0.56	
16563.00	90.340	0.090	6749.93	9611.49	9517.18	1344.86	3272652.35	1412803.20	40.4624111	-104.5201113	0.63	
16657.00	90.430	359.710	6749.30	9704.63	9611.17	1344.70	3272652.19	1412897.19	40.4626691	-104.5201082	0.42	
16752.00	90.220	0.440	6748.76	9798.80	9706.17	1344.82	3272652.31	1412992.18	40.4629299	-104.5201040	0.80	
16846.00	90.030	359.970	6748.56	9892.01	9800.17	1345.16	3272652.65	1413086.18	40.4631878	-104.5200990	0.54	
16941.00	90.310	0.130	6748.28	9986.18	9895.17	1345.24	3272652.73	1413181.18	40.4634486	-104.5200949	0.34	
17035.00	90.060	0.260	6747.97	10079.39	9989.17	1345.56	3272653.05	1413275.17	40.4637066	-104.5200901	0.30	

REFERENCE WELLPATH IDENTIFICATION

Operator	NOBLE ENERGY, INC	Well	Reveille A35-762
Field	WELD COUNTY (NOBLE NAD 83 GRID)	API	0512350798
Facility	SEC.35-T06N-R64W	Wellbore	Reveille A35-762 AWB
Slot	SLOT#21 Reveille A35-762 (260'FSL & 405'FWL,SEC.35)		

WELLPATH DATA (182 stations) † = interpolated, ‡ = extrapolated station

MD [ft]	Inclination [°]	Azimuth [°]	TVD [ft]	Vert Sect [ft]	North [ft]	East [ft]	Grid East [US ft]	Grid North [US ft]	Latitude	Longitude	DLS [°/100ft]	Comments
17130.00	89.970	0.480	6747.95	10173.62	10084.17	1346.18	3272653.66	1413370.16	40.4639673	-104.5200841	0.25	LAST BH MWD SURVEY
17162.00‡	89.970	0.480	6747.96	10205.37	10116.17	1346.44	3272653.93	1413402.16	40.4640551	-104.5200819	0.00	PROJECTION TO BIT

HOLE & CASING SECTIONS - Ref Wellbore: Reveille A35-762 AWB Ref Wellpath: Reveille A35-762 AWP

String/Diameter	Start MD [ft]	End MD [ft]	Interval [ft]	Start TVD [ft]	End TVD [ft]	Start N/S [ft]	Start E/W [ft]	End N/S [ft]	End E/W [ft]
9.625in Casing Surface	30.00	1933.50	1903.50	30.00	1933.39	0.02	0.00	-8.88	-5.59

REFERENCE WELLPATH IDENTIFICATION

Operator	NOBLE ENERGY, INC	Well	Reveille A35-762
Field	WELD COUNTY (NOBLE NAD 83 GRID)	API	0512350798
Facility	SEC.35-T06N-R64W	Wellbore	Reveille A35-762 AWB
Slot	SLOT#21 Reveille A35-762 (260'FSL & 405'FWL,SEC.35)		

TARGETS

Name	TVD [ft]	North [ft]	East [ft]	Grid East [US ft]	Grid North [US ft]	Latitude	Longitude	Shape
SEC.26-T06N-R64W	16.00	245.85	-4184.06	3267123.65	1403532.24	40.4371300	-104.5403400	polygon
	2D Polygon: dimensions not calculated							
SEC.27-T06N-R64W	16.00	245.85	-4184.06	3267123.65	1403532.24	40.4371300	-104.5403400	polygon
	2D Polygon: dimensions not calculated							
SEC.34-T06N-R64W	16.00	245.85	-4184.06	3267123.65	1403532.24	40.4371300	-104.5403400	polygon
	2D Polygon: dimensions not calculated							
SEC.35-T06N-R64W	16.00	245.85	-4184.06	3267123.65	1403532.24	40.4371300	-104.5403400	polygon
	2D Polygon: dimensions not calculated							
Reveille A35-762 BHL REV-1 (200'FNL & 1872'FWL,SEC.26)	6748.00	10116.88	1356.88	3272664.36	1413402.88	40.4640568	-104.5200443	point

WELLPATH COMPOSITION - Ref Wellbore: Reveille A35-762 AWB Ref Wellpath: Reveille A35-762 AWP

Start MD [ft]	End MD [ft]	Positional Uncertainty Model	Log Name/Comment	Wellbore	Survey Date
0.00	1928.00	Gyrodatta 2015 - GC+DROP+COND	Gyrodatta 2015 - GC+DROP+COND 13-1/2" <82 - 1928>	Reveille A35-762 AWB	1/4/2021
1928.00	17162.00	OWSG MWD rev2 (MS+IFR1) NOBLE	OWSG MWD rev2 (MS+IFR1) NOBLE 8-1/2" <1993 - 17130>	Reveille A35-762 AWB	1/25/2021

REFERENCE WELLPATH IDENTIFICATION

Operator	NOBLE ENERGY, INC	Well	Reveille A35-762
Field	WELD COUNTY (NOBLE NAD 83 GRID)	API	0512350798
Facility	SEC.35-T06N-R64W	Wellbore	Reveille A35-762 AWB
Slot	SLOT#21 Reveille A35-762 (260'FSL & 405'FWL,SEC.35)		

WELLPATH COMMENTS

MD [ft]	Inclination [°]	Azimuth [°]	TVD [ft]	Comment
82.00	0.170	343.580	82.00	FIRST GYRODATA SURVEY
1928.00	0.930	160.340	1927.89	LAST GYRODATA SURVEY
1993.00	1.140	107.640	1992.88	FIRST BH MWD SURVEY
17130.00	89.970	0.480	6747.95	LAST BH MWD SURVEY
17162.00	89.970	0.480	6747.96	PROJECTION TO BIT