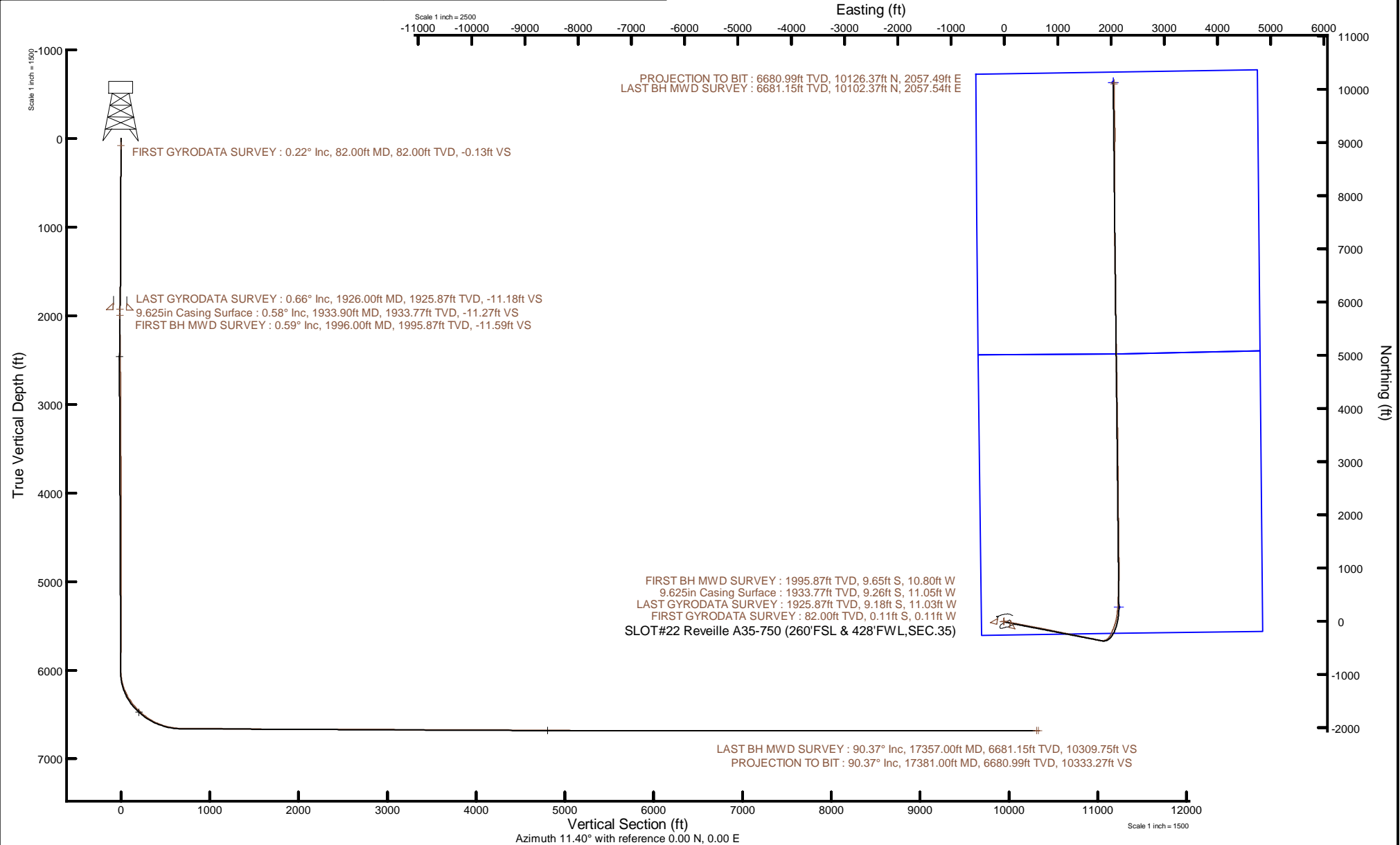


NOBLE ENERGY, INC



Location: COLORADO Slot: SLOT#22 Reveille A35-750 (260'FSL & 428'FWL,SEC.35)
 Field: WELD COUNTY (NOBLE NAD 83 GRID) Well: Reveille A35-750
 Facility: SEC.35-T06N-R64W Wellbore: Reveille A35-750 PWB

Plot reference wellpath is Reveille A35-750 PWP Rev-B.0	Grid System: NAD83 / Lambert Colorado SP, Northern Zone (501), US feet
True vertical depths are referenced to H&P 517 (30) (RT)	North Reference: Grid north
Reference wellpath measured depths are referenced to H&P 517 (30) (RT)	Scale: True distance
H&P 517 (30) (RT) to Mean Sea Level: 4677 feet	Coordinates are in feet referenced to Slot
Mean Sea Level to Mud line (At Slot: SLOT#22 Reveille A35-750 (260'FSL & 428'FWL,SEC.35)): 0 feet	Depths are in feet
Offset wellpath MDs are referenced to each path's default MD datum	Created by: painsetr on 2021-01-31; Database: WellArchitectDB



REFERENCE WELLPATH IDENTIFICATION			
Operator	NOBLE ENERGY, INC	Well	Reveille A35-750
Field	WELD COUNTY (NOBLE NAD 83 GRID)	API	0512350801
Facility	SEC.35-T06N-R64W	Wellbore	Reveille A35-750 AWB
Slot	SLOT#22 Reveille A35-750 (260'FSL & 428'FWL,SEC.35)		

REPORT SETUP INFORMATION			
Projection System	NAD83 / Lambert Colorado SP, Northern Zone (501), US feet	Software System	WellArchitect® 6.0
North Reference	Grid	User	Painsetr
Scale	0.999962	Report Generated	1/31/2021 at 6:53:27 AM
Convergence at slot	0.63° East	Database	WellArchitectDB

WELLPATH LOCATION						
	Local coordinates		Grid coordinates		Geographic coordinates	
	North[ft]	East[ft]	Easting[US ft]	Northing[US ft]	Latitude	Longitude
Slot Location	-1916.15	-9.00	3271329.81	1403286.65	40.4363300°	-104.5252400°
Facility Reference Pt			3271338.81	1405202.72	40.4415890°	-104.5251320°
Field Reference Pt			3000000.00	4454105.15	48.7761986°	-105.5000000°

WELLPATH DATUM			
Calculation method	Minimum curvature	H&P 517 (30') (RT) to Facility Vertical Datum	4677.00ft
Horizontal Reference Pt	Slot	H&P 517 (30') (RT) to Mean Sea Level	4677.00ft
Vertical Reference Pt	H&P 517 (30') (RT)	H&P 517 (30') (RT) to Mud Line at Slot (SLOT#22 Reveille A35-750 (260'FSL & 428'FWL,SEC.35))	4677.00ft
MD Reference Pt	H&P 517 (30') (RT)	Section Origin	N 0.00, E 0.00 ft
Field Vertical Reference	Mean Sea Level	Section Azimuth	11.40°

REFERENCE WELLPATH IDENTIFICATION

Operator	NOBLE ENERGY, INC	Well	Reveille A35-750
Field	WELD COUNTY (NOBLE NAD 83 GRID)	API	0512350801
Facility	SEC.35-T06N-R64W	Wellbore	Reveille A35-750 AWB
Slot	SLOT#22 Reveille A35-750 (260'FSL & 428'FWL,SEC.35)		

WELLPATH DATA (182 stations)

MD [ft]	Inclination [°]	Azimuth [°]	TVD [ft]	Vert Sect [ft]	North [ft]	East [ft]	Grid East [US ft]	Grid North [US ft]	Latitude	Longitude	DLS [°/100ft]	Comments
0.00	0.000	226.840	0.00	0.00	0.00	0.00	3271329.81	1403286.65	40.4363300	-104.5252400	0.00	
82.00	0.220	226.840	82.00	-0.13	-0.11	-0.11	3271329.70	1403286.54	40.4363297	-104.5252404	0.27	FIRST GYRODATA SURVEY
175.00	0.210	262.330	175.00	-0.33	-0.25	-0.41	3271329.40	1403286.40	40.4363293	-104.5252415	0.14	
266.00	0.060	268.640	266.00	-0.39	-0.28	-0.63	3271329.18	1403286.37	40.4363292	-104.5252422	0.17	
361.00	0.270	266.390	361.00	-0.46	-0.29	-0.90	3271328.91	1403286.36	40.4363292	-104.5252432	0.22	
455.00	1.080	278.290	454.99	-0.57	-0.18	-2.00	3271327.81	1403286.47	40.4363295	-104.5252472	0.87	
550.00	1.130	250.180	549.97	-1.10	-0.37	-3.76	3271326.05	1403286.28	40.4363291	-104.5252535	0.57	
645.00	0.380	244.060	644.97	-1.78	-0.82	-4.93	3271324.88	1403285.83	40.4363279	-104.5252577	0.79	
739.00	0.220	320.790	738.96	-1.85	-0.82	-5.32	3271324.49	1403285.83	40.4363279	-104.5252591	0.42	
834.00	0.260	289.370	833.96	-1.71	-0.61	-5.64	3271324.17	1403286.04	40.4363285	-104.5252603	0.14	
928.00	0.580	267.200	927.96	-1.80	-0.56	-6.32	3271323.49	1403286.09	40.4363286	-104.5252627	0.38	
1023.00	0.700	245.960	1022.96	-2.25	-0.82	-7.33	3271322.48	1403285.83	40.4363279	-104.5252663	0.28	
1118.00	0.210	259.220	1117.95	-2.65	-1.09	-8.03	3271321.78	1403285.56	40.4363272	-104.5252689	0.52	
1213.00	0.410	224.110	1212.95	-3.00	-1.36	-8.44	3271321.37	1403285.29	40.4363265	-104.5252703	0.28	
1307.00	0.260	261.670	1306.95	-3.36	-1.64	-8.88	3271320.93	1403285.01	40.4363257	-104.5252720	0.27	
1402.00	0.360	192.920	1401.95	-3.73	-1.96	-9.16	3271320.65	1403284.69	40.4363249	-104.5252730	0.38	
1497.00	0.160	180.060	1496.95	-4.16	-2.38	-9.23	3271320.58	1403284.27	40.4363237	-104.5252732	0.22	
1592.00	0.400	176.360	1591.95	-4.61	-2.84	-9.21	3271320.60	1403283.81	40.4363224	-104.5252732	0.25	
1686.00	1.010	183.700	1685.94	-5.75	-4.00	-9.24	3271320.57	1403282.65	40.4363193	-104.5252733	0.65	
1781.00	1.740	193.030	1780.91	-8.02	-6.24	-9.62	3271320.19	1403280.41	40.4363131	-104.5252748	0.80	
1876.00	1.270	218.210	1875.88	-10.40	-8.47	-10.60	3271319.21	1403278.18	40.4363070	-104.5252784	0.84	
1926.00	0.660	197.930	1925.87	-11.18	-9.18	-11.03	3271318.78	1403277.47	40.4363051	-104.5252800	1.38	LAST GYRODATA SURVEY
1996.00	0.590	103.100	1995.87	-11.59	-9.65	-10.80	3271319.01	1403277.00	40.4363038	-104.5252792	1.32	FIRST BH MWD SURVEY
2090.00	3.360	100.220	2089.80	-11.55	-10.25	-7.62	3271322.19	1403276.41	40.4363021	-104.5252678	2.95	
2185.00	5.890	93.080	2184.49	-10.79	-11.00	-0.01	3271329.80	1403275.65	40.4362998	-104.5252405	2.73	
2280.00	8.050	102.400	2278.78	-10.20	-12.69	11.36	3271341.17	1403273.96	40.4362948	-104.5251997	2.56	
2374.00	11.720	95.560	2371.37	-9.34	-15.03	27.29	3271357.10	1403271.62	40.4362879	-104.5251425	4.09	
2469.00	15.340	99.350	2463.72	-7.91	-18.01	49.30	3271379.11	1403268.64	40.4362790	-104.5250636	3.92	
2563.00	18.550	98.540	2553.63	-6.71	-22.25	76.36	3271406.17	1403264.40	40.4362666	-104.5249666	3.42	
2658.00	20.500	99.230	2643.16	-5.33	-27.16	107.73	3271437.54	1403259.49	40.4362522	-104.5248541	2.07	

REFERENCE WELLPATH IDENTIFICATION			
Operator	NOBLE ENERGY, INC	Well	Reveille A35-750
Field	WELD COUNTY (NOBLE NAD 83 GRID)	API	0512350801
Facility	SEC.35-T06N-R64W	Wellbore	Reveille A35-750 AWB
Slot	SLOT#22 Reveille A35-750 (260'FSL & 428'FWL,SEC.35)		

WELLPATH DATA (182 stations)												
MD [ft]	Inclination [°]	Azimuth [°]	TVD [ft]	Vert Sect [ft]	North [ft]	East [ft]	Grid East [US ft]	Grid North [US ft]	Latitude	Longitude	DLS [°/100ft]	Comments
2753.00	25.750	98.660	2730.50	-3.71	-32.94	144.58	3271474.38	1403253.71	40.4362352	-104.5247220	5.53	
2847.00	26.810	101.300	2814.79	-2.69	-40.17	185.55	3271515.36	1403246.48	40.4362141	-104.5245750	1.68	
2942.00	27.420	100.410	2899.35	-2.27	-48.32	228.08	3271557.88	1403238.33	40.4361904	-104.5244226	0.77	
3037.00	27.160	102.270	2983.77	-2.22	-56.88	270.78	3271600.58	1403229.77	40.4361657	-104.5242696	0.94	
3131.00	26.780	101.170	3067.55	-2.46	-65.54	312.52	3271642.32	1403221.11	40.4361406	-104.5241200	0.67	
3226.00	26.130	101.680	3152.60	-2.47	-73.93	354.00	3271683.80	1403212.73	40.4361164	-104.5239713	0.72	
3320.00	26.900	100.340	3236.72	-2.18	-81.93	395.19	3271724.99	1403204.72	40.4360931	-104.5238237	1.04	
3415.00	26.690	101.110	3321.51	-1.67	-89.90	437.27	3271767.06	1403196.75	40.4360700	-104.5236728	0.43	
3510.00	26.930	100.420	3406.30	-1.19	-97.90	479.36	3271809.15	1403188.75	40.4360468	-104.5235219	0.41	
3604.00	27.330	101.760	3489.96	-0.96	-106.15	521.42	3271851.21	1403180.50	40.4360229	-104.5233712	0.78	
3699.00	27.560	100.080	3574.27	-0.59	-114.44	564.41	3271894.20	1403172.21	40.4359988	-104.5232171	0.85	
3888.00	27.550	101.520	3741.83	0.33	-130.82	650.29	3271980.07	1403155.83	40.4359512	-104.5229093	0.35	
3983.00	27.440	101.190	3826.10	0.37	-139.46	693.29	3272023.07	1403147.20	40.4359262	-104.5227551	0.20	
4077.00	26.980	100.680	3909.70	0.72	-147.61	735.49	3272065.27	1403139.04	40.4359026	-104.5226039	0.55	
4172.00	27.300	100.560	3994.24	1.31	-155.60	778.08	3272107.86	1403131.06	40.4358794	-104.5224512	0.34	
4266.00	27.330	101.350	4077.76	1.65	-163.80	820.43	3272150.21	1403122.86	40.4358556	-104.5222994	0.39	
4361.00	27.190	102.700	4162.21	1.18	-172.86	862.99	3272192.76	1403113.80	40.4358294	-104.5221469	0.67	
4456.00	27.150	102.250	4246.73	0.36	-182.23	905.34	3272235.12	1403104.43	40.4358024	-104.5219951	0.22	
4550.00	27.540	101.450	4330.22	0.03	-191.10	947.60	3272277.37	1403095.56	40.4357768	-104.5218437	0.57	
4645.00	28.260	101.290	4414.18	0.06	-199.86	991.18	3272320.95	1403086.80	40.4357514	-104.5216875	0.76	
4740.00	27.700	100.940	4498.08	0.28	-208.45	1034.92	3272364.69	1403078.21	40.4357265	-104.5215307	0.61	
4834.00	27.870	101.470	4581.24	0.43	-216.97	1077.90	3272407.67	1403069.69	40.4357019	-104.5213767	0.32	
4928.00	27.880	101.370	4664.33	0.42	-225.67	1120.98	3272450.74	1403060.99	40.4356767	-104.5212223	0.05	
5023.00	27.270	100.990	4748.54	0.59	-234.20	1164.12	3272493.88	1403052.46	40.4356520	-104.5210676	0.67	
5117.00	27.830	101.100	4831.88	0.86	-242.53	1206.79	3272536.55	1403044.13	40.4356278	-104.5209147	0.60	
5212.00	27.940	101.110	4915.85	1.09	-251.09	1250.39	3272580.15	1403035.57	40.4356030	-104.5207584	0.12	
5306.00	27.870	101.470	4998.92	1.18	-259.70	1293.53	3272623.29	1403026.96	40.4355780	-104.5206038	0.19	
5400.00	25.250	102.080	5082.99	0.91	-268.26	1334.68	3272664.43	1403018.40	40.4355533	-104.5204563	2.80	
5495.00	26.250	101.820	5168.56	0.52	-276.81	1375.05	3272704.81	1403009.85	40.4355286	-104.5203116	1.06	
5590.00	26.850	101.220	5253.54	0.44	-285.29	1416.66	3272746.41	1403001.37	40.4355041	-104.5201625	0.69	

REFERENCE WELLPATH IDENTIFICATION			
Operator	NOBLE ENERGY, INC	Well	Reveille A35-750
Field	WELD COUNTY (NOBLE NAD 83 GRID)	API	0512350801
Facility	SEC.35-T06N-R64W	Wellbore	Reveille A35-750 AWB
Slot	SLOT#22 Reveille A35-750 (260'FSL & 428'FWL,SEC.35)		

WELLPATH DATA (182 stations)												
MD [ft]	Inclination [°]	Azimuth [°]	TVD [ft]	Vert Sect [ft]	North [ft]	East [ft]	Grid East [US ft]	Grid North [US ft]	Latitude	Longitude	DLS [°/100ft]	Comments
5684.00	28.320	101.460	5336.85	0.48	-293.85	1459.34	3272789.09	1402992.81	40.4354793	-104.5200096	1.57	
5779.00	28.200	101.860	5420.53	0.28	-302.94	1503.39	3272833.14	1402983.72	40.4354530	-104.5198517	0.24	
5874.00	28.280	101.940	5504.22	-0.11	-312.21	1547.37	3272877.12	1402974.46	40.4354262	-104.5196941	0.09	
5968.00	27.420	101.410	5587.33	-0.32	-321.10	1590.38	3272920.12	1402965.57	40.4354005	-104.5195400	0.95	
6063.00	27.580	100.850	5671.60	-0.11	-329.56	1633.42	3272963.16	1402957.10	40.4353760	-104.5193857	0.32	
6157.00	28.340	102.200	5754.63	-0.21	-338.37	1676.60	3273006.34	1402948.29	40.4353505	-104.5192309	1.05	
6252.00	28.220	102.550	5838.29	-0.97	-348.02	1720.56	3273050.30	1402938.64	40.4353227	-104.5190734	0.22	
6347.00	27.020	101.170	5922.46	-1.33	-357.08	1763.66	3273093.40	1402929.58	40.4352965	-104.5189190	1.43	
6441.00	27.460	100.720	6006.04	-0.99	-365.25	1805.90	3273135.64	1402921.42	40.4352728	-104.5187675	0.52	
6536.00	29.500	87.910	6089.61	4.74	-368.47	1850.84	3273180.58	1402918.19	40.4352626	-104.5186062	6.77	
6630.00	29.410	67.070	6171.68	23.20	-358.61	1895.34	3273225.08	1402928.05	40.4352883	-104.5184460	10.86	
6725.00	31.370	53.050	6253.73	54.88	-334.63	1936.64	3273266.38	1402952.04	40.4353529	-104.5182967	7.73	
6819.00	35.760	33.450	6332.27	98.77	-296.87	1971.46	3273301.19	1402989.79	40.4354554	-104.5181701	12.38	
6914.00	41.680	24.170	6406.42	155.40	-244.80	1999.74	3273329.47	1403041.86	40.4355975	-104.5180665	8.71	
7009.00	47.820	23.860	6473.85	220.64	-183.74	2026.94	3273356.67	1403102.92	40.4357643	-104.5179663	6.47	
7104.00	55.810	22.190	6532.54	293.73	-115.05	2056.06	3273385.79	1403171.60	40.4359519	-104.5178590	8.52	
7198.00	62.390	16.010	6580.82	373.58	-38.88	2082.28	3273412.01	1403247.77	40.4361602	-104.5177618	8.99	
7293.00	71.290	10.870	6618.17	460.75	45.98	2102.42	3273432.15	1403332.62	40.4363925	-104.5176860	10.60	
7388.00	78.310	6.800	6643.07	552.25	136.50	2116.44	3273446.16	1403423.14	40.4366405	-104.5176321	8.47	
7482.00	86.830	7.390	6655.21	645.11	228.91	2127.95	3273457.67	1403515.55	40.4368938	-104.5175871	9.09	
7577.00	90.060	2.300	6657.79	739.41	323.49	2135.96	3273465.68	1403610.13	40.4371531	-104.5175545	6.34	
7672.00	89.820	1.040	6657.89	833.04	418.45	2138.73	3273468.45	1403705.08	40.4374137	-104.5175408	1.35	
7766.00	89.750	1.510	6658.24	925.58	512.42	2140.82	3273470.54	1403799.05	40.4376716	-104.5175296	0.51	
7861.00	89.820	1.650	6658.60	1019.18	607.39	2143.44	3273473.16	1403894.01	40.4379321	-104.5175164	0.16	
7956.00	89.140	1.590	6659.46	1112.80	702.34	2146.13	3273475.85	1403988.96	40.4381927	-104.5175029	0.72	
8050.00	89.540	1.480	6660.55	1205.40	796.30	2148.64	3273478.37	1404082.92	40.4384505	-104.5174902	0.44	
8145.00	89.320	359.960	6661.49	1298.75	891.29	2149.84	3273479.56	1404177.90	40.4387112	-104.5174821	1.62	
8240.00	89.380	359.980	6662.57	1391.85	986.28	2149.79	3273479.51	1404272.89	40.4389719	-104.5174785	0.07	
8334.00	89.200	359.310	6663.73	1483.87	1080.27	2149.20	3273478.93	1404366.88	40.4392299	-104.5174768	0.74	
8429.00	89.350	359.270	6664.93	1576.75	1175.26	2148.03	3273477.75	1404461.86	40.4394906	-104.5174773	0.16	

REFERENCE WELLPATH IDENTIFICATION			
Operator	NOBLE ENERGY, INC	Well	Reville A35-750
Field	WELD COUNTY (NOBLE NAD 83 GRID)	API	0512350801
Facility	SEC.35-T06N-R64W	Wellbore	Reville A35-750 AWB
Slot	SLOT#22 Reville A35-750 (260'FSL & 428'FWL,SEC.35)		

WELLPATH DATA (182 stations)												
MD [ft]	Inclination [°]	Azimuth [°]	TVD [ft]	Vert Sect [ft]	North [ft]	East [ft]	Grid East [US ft]	Grid North [US ft]	Latitude	Longitude	DLS [°/100ft]	Comments
8524.00	88.770	358.590	6666.49	1669.50	1270.23	2146.25	3273475.98	1404556.83	40.4397514	-104.5174799	0.94	
8618.00	89.690	359.790	6667.76	1761.36	1364.21	2144.93	3273474.65	1404650.80	40.4400093	-104.5174809	1.61	
8713.00	90.000	359.830	6668.01	1854.42	1459.20	2144.61	3273474.33	1404745.80	40.4402701	-104.5174783	0.33	
8808.00	89.850	359.240	6668.14	1947.39	1554.20	2143.84	3273473.56	1404840.79	40.4405309	-104.5174773	0.64	
8903.00	89.940	359.530	6668.31	2040.30	1649.20	2142.82	3273472.54	1404935.78	40.4407916	-104.5174771	0.32	
8998.00	89.910	359.190	6668.44	2133.21	1744.19	2141.76	3273471.48	1405030.77	40.4410524	-104.5174772	0.36	
9092.00	90.030	359.380	6668.49	2225.12	1838.18	2140.59	3273470.31	1405124.76	40.4413104	-104.5174776	0.24	
9186.00	89.850	359.430	6668.58	2317.07	1932.18	2139.61	3273469.33	1405218.75	40.4415684	-104.5174774	0.20	
9281.00	89.820	359.400	6668.86	2409.99	2027.17	2138.64	3273468.36	1405313.74	40.4418292	-104.5174771	0.04	
9376.00	89.970	359.510	6669.03	2502.93	2122.17	2137.74	3273467.46	1405408.73	40.4420899	-104.5174766	0.20	
9470.00	89.940	359.820	6669.11	2594.97	2216.17	2137.19	3273466.91	1405502.73	40.4423480	-104.5174748	0.33	
9565.00	90.180	359.080	6669.01	2687.91	2311.16	2136.27	3273466.00	1405597.72	40.4426087	-104.5174743	0.82	
9659.00	89.880	359.400	6668.96	2779.80	2405.15	2135.03	3273464.75	1405691.71	40.4428667	-104.5174750	0.47	
9754.00	89.660	359.780	6669.34	2872.78	2500.15	2134.35	3273464.07	1405786.70	40.4431275	-104.5174737	0.46	
9848.00	90.000	359.780	6669.62	2964.86	2594.15	2133.99	3273463.71	1405880.69	40.4433855	-104.5174713	0.36	
9943.00	89.690	359.620	6669.87	3057.88	2689.15	2133.49	3273463.21	1405975.69	40.4436463	-104.5174693	0.37	
10132.00	89.660	359.300	6670.95	3242.79	2878.13	2131.71	3273461.43	1406164.67	40.4441650	-104.5174681	0.17	
10227.00	89.880	359.390	6671.33	3335.69	2973.13	2130.62	3273460.35	1406259.66	40.4444258	-104.5174683	0.25	
10322.00	89.910	359.370	6671.50	3428.61	3068.12	2129.59	3273459.32	1406354.65	40.4446866	-104.5174682	0.04	
10416.00	90.000	359.210	6671.58	3520.51	3162.11	2128.43	3273458.15	1406448.64	40.4449446	-104.5174686	0.20	
10511.00	90.060	359.740	6671.53	3613.46	3257.11	2127.56	3273457.28	1406543.63	40.4452053	-104.5174680	0.56	
10605.00	89.690	359.400	6671.73	3705.46	3351.11	2126.85	3273456.58	1406637.62	40.4454634	-104.5174667	0.53	
10700.00	90.060	359.550	6671.94	3798.41	3446.10	2125.98	3273455.71	1406732.61	40.4457241	-104.5174661	0.42	
10794.00	89.600	359.140	6672.22	3890.34	3540.09	2124.91	3273454.63	1406826.60	40.4459821	-104.5174662	0.66	
10889.00	89.570	358.640	6672.91	3983.08	3635.07	2123.07	3273452.79	1406921.58	40.4462429	-104.5174690	0.53	
10983.00	89.720	359.030	6673.49	4074.82	3729.05	2121.16	3273450.88	1407015.55	40.4465009	-104.5174722	0.44	
11078.00	89.850	359.060	6673.84	4167.62	3824.04	2119.57	3273449.30	1407110.54	40.4467616	-104.5174741	0.14	
11173.00	89.750	358.970	6674.18	4260.41	3919.02	2117.94	3273447.67	1407205.52	40.4470224	-104.5174762	0.14	
11267.00	89.480	359.040	6674.81	4352.21	4013.01	2116.31	3273446.03	1407299.50	40.4472804	-104.5174783	0.30	
11362.00	89.660	359.070	6675.52	4445.01	4107.99	2114.74	3273444.47	1407394.48	40.4475412	-104.5174801	0.19	

REFERENCE WELLPATH IDENTIFICATION			
Operator	NOBLE ENERGY, INC	Well	Reveille A35-750
Field	WELD COUNTY (NOBLE NAD 83 GRID)	API	0512350801
Facility	SEC.35-T06N-R64W	Wellbore	Reveille A35-750 AWB
Slot	SLOT#22 Reveille A35-750 (260'FSL & 428'FWL,SEC.35)		

WELLPATH DATA (182 stations)												
MD [ft]	Inclination [°]	Azimuth [°]	TVD [ft]	Vert Sect [ft]	North [ft]	East [ft]	Grid East [US ft]	Grid North [US ft]	Latitude	Longitude	DLS [°/100ft]	Comments
11456.00	89.570	359.090	6676.15	4536.84	4201.98	2113.23	3273442.96	1407488.46	40.4477992	-104.5174818	0.10	
11551.00	89.410	359.010	6677.00	4629.64	4296.96	2111.66	3273441.38	1407583.44	40.4480599	-104.5174837	0.19	
11645.00	89.600	359.350	6677.81	4721.51	4390.95	2110.31	3273440.04	1407677.42	40.4483179	-104.5174848	0.41	
11740.00	89.540	359.190	6678.52	4814.38	4485.94	2109.10	3273438.83	1407772.41	40.4485787	-104.5174853	0.18	
11929.00	89.750	359.130	6679.69	4999.08	4674.91	2106.33	3273436.06	1407961.38	40.4490974	-104.5174878	0.12	
12024.00	89.450	359.440	6680.36	5091.96	4769.90	2105.15	3273434.87	1408056.36	40.4493582	-104.5174883	0.45	
12118.00	89.780	358.980	6680.99	5183.84	4863.89	2103.85	3273433.58	1408150.35	40.4496162	-104.5174892	0.60	
12212.00	89.630	359.080	6681.47	5275.65	4957.88	2102.26	3273431.98	1408244.33	40.4498742	-104.5174911	0.19	
12307.00	89.510	359.270	6682.19	5368.49	5052.86	2100.89	3273430.62	1408339.31	40.4501350	-104.5174923	0.24	
12401.00	89.600	358.650	6682.92	5460.28	5146.85	2099.18	3273428.91	1408433.29	40.4503930	-104.5174947	0.67	
12496.00	89.850	359.060	6683.37	5553.01	5241.83	2097.29	3273427.01	1408528.27	40.4506537	-104.5174977	0.51	
12591.00	89.910	359.300	6683.57	5645.86	5336.82	2095.93	3273425.65	1408623.25	40.4509145	-104.5174988	0.26	
12685.00	89.910	359.230	6683.72	5737.76	5430.81	2094.72	3273424.45	1408717.24	40.4511725	-104.5174994	0.07	
12780.00	90.030	358.940	6683.77	5830.57	5525.80	2093.20	3273422.93	1408812.22	40.4514333	-104.5175011	0.33	
12969.00	90.030	359.290	6683.67	6015.24	5714.77	2090.28	3273420.01	1409001.19	40.4519520	-104.5175040	0.19	
13063.00	89.820	359.350	6683.79	6107.16	5808.77	2089.17	3273418.90	1409095.18	40.4522101	-104.5175043	0.23	
13158.00	89.970	359.710	6683.97	6200.12	5903.76	2088.39	3273418.12	1409190.18	40.4524708	-104.5175033	0.41	
13253.00	89.850	359.340	6684.12	6293.09	5998.76	2087.60	3273417.33	1409285.17	40.4527316	-104.5175024	0.41	
13348.00	89.850	359.330	6684.36	6385.99	6093.75	2086.50	3273416.23	1409380.16	40.4529923	-104.5175025	0.01	
13442.00	89.940	359.390	6684.54	6477.92	6187.75	2085.45	3273415.18	1409474.15	40.4532504	-104.5175026	0.12	
13537.00	90.030	359.350	6684.56	6570.83	6282.74	2084.40	3273414.13	1409569.14	40.4535111	-104.5175025	0.10	
13631.00	90.000	359.190	6684.54	6662.73	6376.73	2083.21	3273412.93	1409663.13	40.4537691	-104.5175031	0.17	
13726.00	89.910	359.120	6684.61	6755.57	6471.72	2081.81	3273411.53	1409758.11	40.4540299	-104.5175044	0.12	
13821.00	89.970	359.140	6684.71	6848.40	6566.71	2080.36	3273410.09	1409853.10	40.4542907	-104.5175058	0.07	
13916.00	90.150	359.320	6684.61	6941.26	6661.70	2079.09	3273408.81	1409948.09	40.4545514	-104.5175066	0.27	
14010.00	90.090	359.210	6684.41	7033.16	6755.69	2077.88	3273407.61	1410042.07	40.4548094	-104.5175072	0.13	
14105.00	90.090	359.390	6684.26	7126.05	6850.69	2076.72	3273406.45	1410137.06	40.4550702	-104.5175075	0.19	
14200.00	90.180	359.460	6684.04	7218.98	6945.68	2075.77	3273405.49	1410232.05	40.4553310	-104.5175072	0.12	
14294.00	89.690	357.500	6684.15	7310.59	7039.64	2073.27	3273403.00	1410326.01	40.4555889	-104.5175124	2.15	
14389.00	90.060	359.610	6684.35	7403.21	7134.61	2070.88	3273400.61	1410420.97	40.4558496	-104.5175172	2.25	

REFERENCE WELLPATH IDENTIFICATION			
Operator	NOBLE ENERGY, INC	Well	Reville A35-750
Field	WELD COUNTY (NOBLE NAD 83 GRID)	API	0512350801
Facility	SEC.35-T06N-R64W	Wellbore	Reville A35-750 AWB
Slot	SLOT#22 Reville A35-750 (260'FSL & 428'FWL,SEC.35)		

WELLPATH DATA (182 stations)												
MD [ft]	Inclination [°]	Azimuth [°]	TVD [ft]	Vert Sect [ft]	North [ft]	East [ft]	Grid East [US ft]	Grid North [US ft]	Latitude	Longitude	DLS [°/100ft]	Comments
14483.00	89.910	359.450	6684.38	7495.20	7228.60	2070.11	3273399.83	1410514.97	40.4561077	-104.5175163	0.23	
14578.00	90.000	359.850	6684.45	7588.21	7323.60	2069.53	3273399.25	1410609.96	40.4563684	-104.5175146	0.43	
14673.00	89.940	359.720	6684.50	7681.26	7418.60	2069.17	3273398.90	1410704.96	40.4566292	-104.5175121	0.15	
14767.00	90.060	359.410	6684.50	7773.26	7512.60	2068.46	3273398.18	1410798.95	40.4568872	-104.5175109	0.35	
14862.00	90.680	359.990	6683.89	7866.28	7607.59	2067.96	3273397.69	1410893.94	40.4571479	-104.5175089	0.89	
14957.00	89.630	359.750	6683.63	7959.36	7702.59	2067.74	3273397.47	1410988.94	40.4574087	-104.5175059	1.13	
15051.00	89.820	358.930	6684.08	8051.29	7796.58	2066.66	3273396.39	1411082.92	40.4576667	-104.5175060	0.90	
15146.00	90.550	0.300	6683.78	8144.28	7891.58	2066.02	3273395.75	1411177.91	40.4579275	-104.5175045	1.63	
15241.00	89.780	0.220	6683.50	8237.49	7986.58	2066.45	3273396.18	1411272.91	40.4581882	-104.5174992	0.81	
15335.00	90.490	0.240	6683.28	8329.70	8080.58	2066.83	3273396.56	1411366.90	40.4584462	-104.5174941	0.76	
15430.00	89.970	0.350	6682.90	8422.92	8175.57	2067.32	3273397.05	1411461.90	40.4587069	-104.5174886	0.56	
15524.00	89.690	0.190	6683.18	8515.15	8269.57	2067.76	3273397.49	1411555.89	40.4589649	-104.5174832	0.34	
15619.00	89.820	0.470	6683.59	8608.38	8364.57	2068.31	3273398.04	1411650.89	40.4592256	-104.5174775	0.32	
15714.00	90.030	0.310	6683.71	8701.63	8459.57	2068.96	3273398.68	1411745.88	40.4594863	-104.5174714	0.28	
15808.00	90.150	0.510	6683.56	8793.91	8553.56	2069.63	3273399.36	1411839.87	40.4597443	-104.5174652	0.25	
15903.00	90.220	0.370	6683.26	8887.17	8648.56	2070.36	3273400.09	1411934.87	40.4600050	-104.5174588	0.16	
15997.00	90.000	0.650	6683.08	8979.48	8742.56	2071.20	3273400.92	1412028.86	40.4602630	-104.5174521	0.38	
16092.00	90.220	0.650	6682.89	9072.81	8837.55	2072.27	3273402.00	1412123.85	40.4605237	-104.5174444	0.23	
16187.00	90.060	0.010	6682.66	9166.04	8932.55	2072.82	3273402.55	1412218.84	40.4607844	-104.5174387	0.69	
16281.00	90.090	0.210	6682.54	9258.22	9026.55	2073.00	3273402.73	1412312.84	40.4610424	-104.5174343	0.22	
16376.00	90.060	0.690	6682.41	9351.49	9121.54	2073.75	3273403.47	1412407.83	40.4613031	-104.5174278	0.51	
16565.00	89.780	358.090	6682.68	9536.34	9310.52	2071.74	3273401.46	1412596.80	40.4618218	-104.5174275	1.38	
16660.00	90.060	358.590	6682.81	9628.88	9405.48	2068.98	3273398.71	1412691.75	40.4620826	-104.5174336	0.60	
16754.00	90.090	358.770	6682.69	9720.57	9499.45	2066.82	3273396.55	1412785.72	40.4623406	-104.5174377	0.19	
16849.00	90.120	358.820	6682.51	9813.28	9594.43	2064.82	3273394.55	1412880.70	40.4626013	-104.5174411	0.06	
16944.00	90.150	359.360	6682.29	9906.09	9689.42	2063.31	3273393.04	1412975.68	40.4628621	-104.5174427	0.57	
17038.00	90.250	359.220	6681.96	9998.00	9783.41	2062.15	3273391.87	1413069.67	40.4631201	-104.5174431	0.18	
17133.00	90.090	358.950	6681.68	10090.81	9878.40	2060.63	3273390.36	1413164.65	40.4633808	-104.5174448	0.33	
17227.00	90.250	358.910	6681.40	10182.59	9972.38	2058.87	3273388.60	1413258.63	40.4636388	-104.5174474	0.18	
17322.00	89.940	359.650	6681.24	10275.47	10067.37	2057.68	3273387.41	1413353.62	40.4638996	-104.5174479	0.84	

REFERENCE WELLPATH IDENTIFICATION

Operator	NOBLE ENERGY, INC	Well	Reveille A35-750
Field	WELD COUNTY (NOBLE NAD 83 GRID)	API	0512350801
Facility	SEC.35-T06N-R64W	Wellbore	Reveille A35-750 AWB
Slot	SLOT#22 Reveille A35-750 (260'FSL & 428'FWL,SEC.35)		

WELLPATH DATA (182 stations) † = interpolated, ‡ = extrapolated station

MD [ft]	Inclination [°]	Azimuth [°]	TVD [ft]	Vert Sect [ft]	North [ft]	East [ft]	Grid East [US ft]	Grid North [US ft]	Latitude	Longitude	DLS °/100ft	Comments
17357.00	90.370	359.890	6681.15	10309.75	10102.37	2057.54	3273387.27	1413388.62	40.4639957	-104.5174470	1.41	LAST BH MWD SURVEY
17381.00‡	90.370	359.890	6680.99	10333.27	10126.37	2057.49	3273387.22	1413412.62	40.4640615	-104.5174462	0.00	PROJECTION TO BIT

HOLE & CASING SECTIONS - Ref Wellbore: Reveille A35-750 AWB Ref Wellpath: Reveille A35-750 AWP

String/Diameter	Start MD [ft]	End MD [ft]	Interval [ft]	Start TVD [ft]	End TVD [ft]	Start N/S [ft]	Start E/W [ft]	End N/S [ft]	End E/W [ft]
9.625in Casing Surface	30.00	1933.90	1903.90	30.00	1933.77	-0.01	-0.02	-9.26	-11.05

REFERENCE WELLPATH IDENTIFICATION

Operator	NOBLE ENERGY, INC	Well	Reveille A35-750
Field	WELD COUNTY (NOBLE NAD 83 GRID)	API	0512350801
Facility	SEC.35-T06N-R64W	Wellbore	Reveille A35-750 AWB
Slot	SLOT#22 Reveille A35-750 (260'FSL & 428'FWL,SEC.35)		

TARGETS

Name	TVD [ft]	North [ft]	East [ft]	Grid East [US ft]	Grid North [US ft]	Latitude	Longitude	Shape
SEC.26-T06N-R64W	16.00	245.60	-4206.33	3267123.65	1403532.24	40.4371300	-104.5403400	polygon
	2D Polygon: dimensions not calculated							
SEC.27-T06N-R64W	16.00	245.60	-4206.33	3267123.65	1403532.24	40.4371300	-104.5403400	polygon
	2D Polygon: dimensions not calculated							
SEC.34-T06N-R64W	16.00	245.60	-4206.33	3267123.65	1403532.24	40.4371300	-104.5403400	polygon
	2D Polygon: dimensions not calculated							
SEC.35-T06N-R64W	16.00	245.60	-4206.33	3267123.65	1403532.24	40.4371300	-104.5403400	polygon
	2D Polygon: dimensions not calculated							
Reveille A35-750 BHL REV-1 (200'FNL & 2580'FWL,SEC.26)	6661.00	10127.07	2042.58	3273372.31	1413413.31	40.4640639	-104.5174998	point
Reveille A35-750 TPZ REV-1 (490'FSL & 2580'FWL,SEC.35)	6661.00	262.27	2148.63	3273478.35	1403548.91	40.4369847	-104.5175115	point
Reveille A35-750 BHL REV-2 (200'FNL & 2580'FWL,SEC.26)	6682.00	10127.07	2042.58	3273372.31	1413413.31	40.4640639	-104.5174998	point

REFERENCE WELLPATH IDENTIFICATION

Operator	NOBLE ENERGY, INC	Well	Reveille A35-750
Field	WELD COUNTY (NOBLE NAD 83 GRID)	API	0512350801
Facility	SEC.35-T06N-R64W	Wellbore	Reveille A35-750 AWB
Slot	SLOT#22 Reveille A35-750 (260'FSL & 428'FWL,SEC.35)		

WELLPATH COMPOSITION - Ref Wellbore: Reveille A35-750 AWB Ref Wellpath: Reveille A35-750 AWP

Start MD [ft]	End MD [ft]	Positional Uncertainty Model	Log Name/Comment	Wellbore	Survey Date
0.00	1926.00	Gyrodata 2015 - GC+DROP+COND	Gyrodata 2015 - GC+DROP+COND 13-1/2" <82 - 1926>	Reveille A35-750 AWB	1/4/2021
1926.00	17381.00	OWSG MWD rev2 (MS+IFR1) NOBLE	OWSG MWD rev2 (MS+IFR1) NOBLE 8-1/2" <1996 - 17357>	Reveille A35-750 AWB	1/29/2021

REFERENCE WELLPATH IDENTIFICATION

Operator	NOBLE ENERGY, INC	Well	Reveille A35-750
Field	WELD COUNTY (NOBLE NAD 83 GRID)	API	0512350801
Facility	SEC.35-T06N-R64W	Wellbore	Reveille A35-750 AWB
Slot	SLOT#22 Reveille A35-750 (260'FSL & 428'FWL,SEC.35)		

WELLPATH COMMENTS

MD [ft]	Inclination [°]	Azimuth [°]	TVD [ft]	Comment
82.00	0.220	226.840	82.00	FIRST GYRODATA SURVEY
1926.00	0.660	197.930	1925.87	LAST GYRODATA SURVEY
1996.00	0.590	103.100	1995.87	FIRST BH MWD SURVEY
17357.00	90.370	359.890	6681.15	LAST BH MWD SURVEY
17381.00	90.370	359.890	6680.99	PROJECTION TO BIT