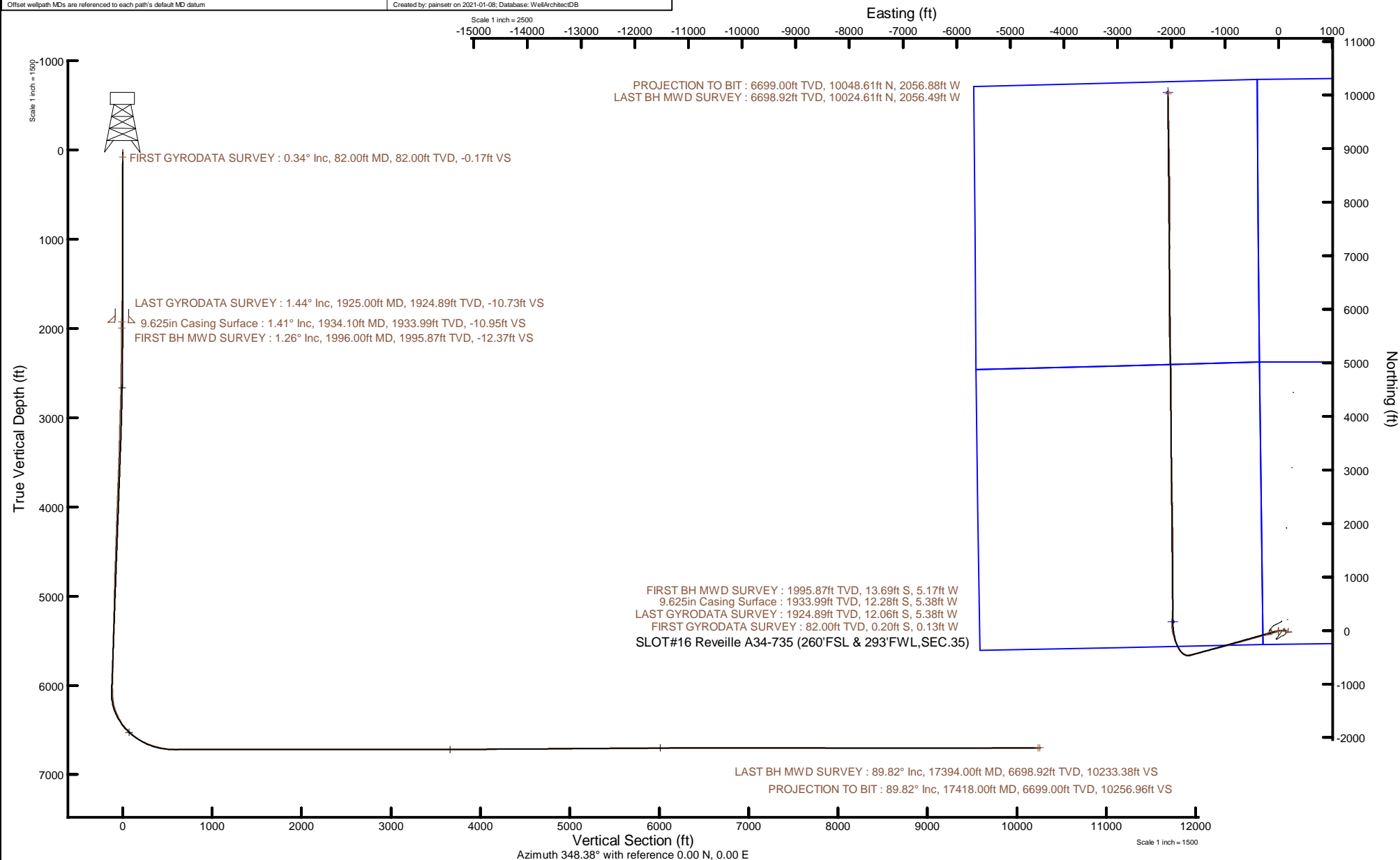


Location:	COLORADO	Slot:	SLOT#16 Reville A34-735 (260°FSL & 293°FWL, SEC.35)
Field:	WELD COUNTY (NOBLE NAD 83 GRID)	Well:	Reville A34-735
Facility:	SEC.35-T06N-R64W	Wellbore:	Reville A34-735 PWB
Plot reference wellpath is Reville A34-735 PWP Rev-A.0		Grid System: NAD83 / Lambert Colorado SP, Northern Zone (501), US feet	
True vertical depths are referenced to H&P 517 (30) (RT)		North Reference: Grid north	
Reference wellpath measured depths are referenced to H&P 517 (30) (RT)		Scale: True distance	
H&P 517 (30) (RT) to Mean Sea Level: 4681 feet		Coordinates are in feet referenced to Slot	
Mean Sea Level to Mud line (At Slot: SLOT#16 Reville A34-735 (260°FSL & 293°FWL, SEC.35)): 0 feet		Depths are in feet	
Offset wellpath MDs are referenced to each path's default MD datum		Created by: painser on 2021-01-08; Database: WellArchitectvB	



## REFERENCE WELLPATH IDENTIFICATION

Operator	NOBLE ENERGY, INC	Well	Reveille A34-735
Field	WELD COUNTY (NOBLE NAD 83 GRID)	API/Legal	
Facility	SEC.35-T06N-R64W	Wellbore	Reveille A34-735 AWB
Slot	SLOT#16 Reveille A34-735 (260'FSL & 293'FWL,SEC.35)		

## REPORT SETUP INFORMATION

Projection System	NAD83 / Lambert Colorado SP, Northern Zone (501), US feet	Software System	WellArchitect® 6.0
North Reference	Grid	User	Painsetr
Scale	0.999962	Report Generated	1/8/2021 at 4:13:17 PM
Convergence at slot	0.63° East	Database	WellArchitectDB

## WELLPATH LOCATION

	Local coordinates		Grid coordinates		Geographic coordinates	
	North[ft]	East[ft]	Easting[US ft]	Northing[US ft]	Latitude	Longitude
Slot Location	-1917.63	-145.40	3271193.42	1403285.17	40.4363300°	-104.5257300°
Facility Reference Pt			3271338.81	1405202.72	40.4415890°	-104.5251320°
Field Reference Pt			3000000.00	4454105.15	48.7761986°	-105.5000000°

## WELLPATH DATUM

Calculation method	Minimum curvature	H&P 517 (30') (RT) to Facility Vertical Datum	4681.00ft
Horizontal Reference Pt	Slot	H&P 517 (30') (RT) to Mean Sea Level	4681.00ft
Vertical Reference Pt	H&P 517 (30') (RT)	H&P 517 (30') (RT) to Mud Line at Slot (SLOT#16 Reveille A34-735 (260'FSL & 293'FWL,SEC.35))	4681.00ft
MD Reference Pt	H&P 517 (30') (RT)	Section Origin	N 0.00, E 0.00 ft
Field Vertical Reference	Mean Sea Level	Section Azimuth	348.38°

## REFERENCE WELLPATH IDENTIFICATION

Operator	NOBLE ENERGY, INC	Well	Reveille A34-735
Field	WELD COUNTY (NOBLE NAD 83 GRID)	API/Legal	
Facility	SEC.35-T06N-R64W	Wellbore	Reveille A34-735 AWB
Slot	SLOT#16 Reveille A34-735 (260'FSL & 293'FWL,SEC.35)		

## WELLPATH DATA (185 stations)

MD [ft]	Inclination [°]	Azimuth [°]	TVD [ft]	Vert Sect [ft]	North [ft]	East [ft]	Grid East [US ft]	Grid North [US ft]	Latitude	Longitude	DLS [°/100ft]	Comments
0.00	0.000	213.450	0.00	0.00	0.00	0.00	3271193.42	1403285.17	40.4363300	-104.5257300	0.00	
82.00	0.340	213.450	82.00	-0.17	-0.20	-0.13	3271193.29	1403284.97	40.4363295	-104.5257305	0.41	FIRST GYRODATA SURVEY
175.00	0.600	197.700	175.00	-0.79	-0.90	-0.43	3271192.99	1403284.27	40.4363276	-104.5257316	0.31	
266.00	0.840	203.820	265.99	-1.75	-1.96	-0.85	3271192.57	1403283.21	40.4363247	-104.5257331	0.28	
361.00	0.680	202.270	360.98	-2.79	-3.12	-1.34	3271192.08	1403282.05	40.4363215	-104.5257349	0.17	
455.00	0.500	260.180	454.98	-3.24	-3.71	-1.96	3271191.46	1403281.46	40.4363199	-104.5257372	0.63	
550.00	0.440	268.910	549.97	-3.16	-3.78	-2.73	3271190.69	1403281.39	40.4363197	-104.5257399	0.10	
645.00	0.220	270.090	644.97	-3.05	-3.79	-3.28	3271190.14	1403281.38	40.4363197	-104.5257419	0.23	
739.00	0.250	223.940	738.97	-3.13	-3.94	-3.60	3271189.82	1403281.23	40.4363193	-104.5257431	0.20	
834.00	0.180	262.810	833.97	-3.24	-4.11	-3.89	3271189.53	1403281.06	40.4363189	-104.5257441	0.17	
928.00	0.300	269.430	927.97	-3.18	-4.13	-4.29	3271189.13	1403281.04	40.4363188	-104.5257455	0.13	
1023.00	0.190	230.880	1022.97	-3.20	-4.23	-4.66	3271188.76	1403280.94	40.4363185	-104.5257469	0.20	
1118.00	0.130	249.870	1117.97	-3.29	-4.36	-4.88	3271188.54	1403280.81	40.4363182	-104.5257477	0.08	
1213.00	0.230	230.630	1212.97	-3.40	-4.52	-5.13	3271188.29	1403280.65	40.4363178	-104.5257486	0.12	
1307.00	0.300	260.540	1306.97	-3.48	-4.68	-5.52	3271187.90	1403280.49	40.4363173	-104.5257500	0.16	
1402.00	0.370	260.640	1401.97	-3.45	-4.77	-6.07	3271187.35	1403280.40	40.4363171	-104.5257520	0.07	
1497.00	0.180	190.240	1496.96	-3.58	-4.97	-6.40	3271187.03	1403280.20	40.4363166	-104.5257532	0.37	
1592.00	0.600	161.630	1591.96	-4.21	-5.59	-6.26	3271187.16	1403279.58	40.4363149	-104.5257527	0.47	
1686.00	0.920	162.220	1685.95	-5.45	-6.78	-5.88	3271187.54	1403278.40	40.4363116	-104.5257514	0.34	
1781.00	1.200	166.770	1780.94	-7.21	-8.47	-5.42	3271188.00	1403276.70	40.4363069	-104.5257498	0.31	
1876.00	1.600	185.080	1875.91	-9.47	-10.76	-5.31	3271188.11	1403274.41	40.4363006	-104.5257495	0.63	
1925.00	1.440	181.310	1924.89	-10.73	-12.06	-5.38	3271188.04	1403273.11	40.4362971	-104.5257498	0.38	LAST GYRODATA SURVEY
1996.00	1.260	162.930	1995.87	-12.37	-13.69	-5.17	3271188.25	1403271.48	40.4362926	-104.5257491	0.66	FIRST BH MWD SURVEY
2090.00	2.770	252.710	2089.83	-13.63	-15.36	-7.04	3271186.38	1403269.81	40.4362881	-104.5257559	3.23	
2185.00	3.760	253.090	2184.67	-14.14	-16.95	-12.21	3271181.21	1403268.22	40.4362839	-104.5257745	1.04	
2279.00	4.800	253.260	2278.41	-14.78	-18.98	-18.93	3271174.49	1403266.20	40.4362785	-104.5257987	1.11	
2374.00	6.680	254.100	2372.93	-15.54	-21.63	-28.05	3271165.37	1403263.54	40.4362715	-104.5258316	1.98	
2468.00	7.570	255.520	2466.20	-16.26	-24.68	-39.30	3271154.12	1403260.49	40.4362635	-104.5258721	0.97	
2563.00	9.900	255.180	2560.09	-17.03	-28.33	-53.26	3271140.16	1403256.84	40.4362539	-104.5259224	2.45	
2658.00	13.090	253.470	2653.18	-18.41	-33.49	-71.47	3271121.95	1403251.69	40.4362403	-104.5259880	3.38	

## REFERENCE WELLPATH IDENTIFICATION

Operator	NOBLE ENERGY, INC	Well	Reveille A34-735
Field	WELD COUNTY (NOBLE NAD 83 GRID)	API/Legal	
Facility	SEC.35-T06N-R64W	Wellbore	Reveille A34-735 AWB
Slot	SLOT#16 Reveille A34-735 (260'FSL & 293'FWL,SEC.35)		

## WELLPATH DATA (185 stations)

MD [ft]	Inclination [°]	Azimuth [°]	TVD [ft]	Vert Sect [ft]	North [ft]	East [ft]	Grid East [US ft]	Grid North [US ft]	Latitude	Longitude	DLS [°/100ft]	Comments
2752.00	17.770	253.590	2743.76	-20.52	-40.57	-95.45	3271097.98	1403244.60	40.4362215	-104.5260744	4.98	
2847.00	19.970	254.080	2833.65	-22.95	-49.12	-124.96	3271068.47	1403236.06	40.4361990	-104.5261808	2.32	
2942.00	22.180	252.970	2922.29	-25.86	-58.82	-157.71	3271035.72	1403226.35	40.4361733	-104.5262988	2.36	
3036.00	24.240	254.840	3008.68	-28.73	-69.06	-193.30	3271000.12	1403216.11	40.4361463	-104.5264271	2.33	
3131.00	23.750	254.540	3095.47	-31.21	-79.26	-230.56	3270962.86	1403205.91	40.4361194	-104.5265613	0.53	
3225.00	23.340	255.150	3181.65	-33.53	-89.08	-266.81	3270926.62	1403196.09	40.4360936	-104.5266919	0.51	
3320.00	24.370	254.680	3268.53	-35.86	-99.08	-303.90	3270889.53	1403186.09	40.4360672	-104.5268255	1.10	
3415.00	23.600	255.200	3355.32	-38.18	-109.12	-341.19	3270852.24	1403176.06	40.4360408	-104.5269599	0.84	
3509.00	25.320	254.650	3440.89	-40.54	-119.25	-378.77	3270814.66	1403165.93	40.4360141	-104.5270953	1.85	
3604.00	26.510	254.560	3526.33	-43.27	-130.27	-418.80	3270774.64	1403154.91	40.4359851	-104.5272395	1.25	
3698.00	26.600	254.140	3610.41	-46.23	-141.61	-459.26	3270734.17	1403143.57	40.4359552	-104.5273853	0.22	
3793.00	26.780	254.230	3695.29	-49.35	-153.24	-500.32	3270693.12	1403131.94	40.4359245	-104.5275332	0.19	
3888.00	26.890	254.240	3780.06	-52.46	-164.89	-541.59	3270651.85	1403120.29	40.4358938	-104.5276819	0.12	
3982.00	26.580	254.570	3864.01	-55.39	-176.26	-582.32	3270611.12	1403108.92	40.4358638	-104.5278287	0.37	
4077.00	26.440	254.180	3949.02	-58.36	-187.68	-623.16	3270570.29	1403097.50	40.4358337	-104.5279758	0.24	
4171.00	26.280	254.950	4033.25	-61.14	-198.79	-663.39	3270530.06	1403086.39	40.4358044	-104.5281208	0.40	
4266.00	26.330	254.290	4118.41	-63.90	-209.95	-703.98	3270489.47	1403075.23	40.4357750	-104.5282670	0.31	
4360.00	26.400	254.670	4202.64	-66.74	-221.12	-744.20	3270449.25	1403064.06	40.4357455	-104.5284119	0.19	
4455.00	26.510	254.170	4287.69	-69.67	-232.49	-784.97	3270408.48	1403052.69	40.4357155	-104.5285588	0.26	
4550.00	26.350	254.290	4372.76	-72.73	-243.98	-825.66	3270367.79	1403041.20	40.4356852	-104.5287054	0.18	
4644.00	26.340	254.320	4457.00	-75.70	-255.26	-865.82	3270327.63	1403029.92	40.4356555	-104.5288501	0.02	
4739.00	26.090	254.490	4542.22	-78.61	-266.55	-906.24	3270287.22	1403018.63	40.4356257	-104.5289958	0.27	
4834.00	26.920	254.490	4627.24	-81.49	-277.88	-947.09	3270246.36	1403007.30	40.4355958	-104.5291430	0.87	
4928.00	27.040	254.120	4711.01	-84.52	-289.42	-988.15	3270205.31	1402995.76	40.4355654	-104.5292909	0.22	
5023.00	26.730	255.370	4795.74	-87.25	-300.72	-1029.59	3270163.87	1402984.46	40.4355356	-104.5294402	0.68	
5117.00	27.070	255.590	4879.57	-89.41	-311.39	-1070.76	3270122.70	1402973.80	40.4355076	-104.5295885	0.38	
5212.00	27.270	255.910	4964.09	-91.40	-322.06	-1112.81	3270080.66	1402963.12	40.4354795	-104.5297400	0.26	
5306.00	25.210	256.190	5048.40	-93.09	-332.09	-1153.14	3270040.33	1402953.10	40.4354532	-104.5298852	2.20	
5400.00	26.330	256.060	5133.05	-94.71	-341.89	-1192.81	3270000.66	1402943.30	40.4354275	-104.5300281	1.19	
5494.00	26.390	255.710	5217.27	-96.53	-352.07	-1233.29	3269960.18	1402933.12	40.4354008	-104.5301739	0.18	

## REFERENCE WELLPATH IDENTIFICATION

Operator	NOBLE ENERGY, INC	Well	Reveille A34-735
Field	WELD COUNTY (NOBLE NAD 83 GRID)	API/Legal	
Facility	SEC.35-T06N-R64W	Wellbore	Reveille A34-735 AWB
Slot	SLOT#16 Reveille A34-735 (260'FSL & 293'FWL,SEC.35)		

## WELLPATH DATA (185 stations)

MD [ft]	Inclination [°]	Azimuth [°]	TVD [ft]	Vert Sect [ft]	North [ft]	East [ft]	Grid East [US ft]	Grid North [US ft]	Latitude	Longitude	DLS [°/100ft]	Comments
5589.00	26.780	255.770	5302.23	-98.49	-362.54	-1274.49	3269918.98	1402922.65	40.4353733	-104.5303223	0.41	
5684.00	26.690	255.890	5387.07	-100.39	-373.00	-1315.93	3269877.54	1402912.18	40.4353458	-104.5304716	0.11	
5778.00	26.150	255.610	5471.25	-102.31	-383.29	-1356.47	3269837.01	1402901.89	40.4353188	-104.5306176	0.59	
5873.00	26.980	255.520	5556.22	-104.40	-393.89	-1397.61	3269795.86	1402891.30	40.4352909	-104.5307658	0.87	
5968.00	27.060	255.520	5640.85	-106.56	-404.68	-1439.40	3269754.08	1402880.51	40.4352626	-104.5309163	0.08	
6062.00	27.280	255.800	5724.48	-108.60	-415.31	-1480.99	3269712.49	1402869.88	40.4352347	-104.5310661	0.27	
6157.00	27.090	255.410	5808.99	-110.70	-426.10	-1523.03	3269670.46	1402859.09	40.4352063	-104.5312176	0.27	
6251.00	27.190	255.260	5892.64	-112.98	-436.95	-1564.51	3269628.97	1402848.23	40.4351777	-104.5313670	0.13	
6346.00	25.620	255.570	5977.72	-115.17	-447.59	-1605.39	3269588.09	1402837.59	40.4351498	-104.5315143	1.66	
6441.00	25.310	262.900	6063.52	-114.58	-455.23	-1645.44	3269548.04	1402829.96	40.4351300	-104.5316584	3.33	
6535.00	28.580	267.280	6147.31	-109.52	-458.78	-1687.86	3269505.63	1402826.41	40.4351215	-104.5318109	4.07	
6630.00	27.960	286.040	6231.14	-95.64	-453.69	-1732.05	3269461.44	1402831.50	40.4351368	-104.5319695	9.34	
6724.00	29.750	303.290	6313.61	-68.90	-434.77	-1772.80	3269420.69	1402850.42	40.4351900	-104.5321151	9.03	
6819.00	36.130	312.940	6393.36	-29.38	-402.70	-1813.07	3269380.42	1402882.49	40.4352792	-104.5322585	8.68	
6914.00	42.780	327.360	6466.82	23.73	-356.30	-1851.10	3269342.40	1402928.88	40.4354077	-104.5323933	11.88	
7008.00	48.560	335.450	6532.54	87.97	-297.27	-1883.01	3269310.49	1402987.91	40.4355707	-104.5325056	8.69	
7103.00	55.630	337.900	6590.87	161.33	-228.46	-1912.59	3269280.90	1403056.72	40.4357604	-104.5326092	7.71	
7198.00	64.330	341.140	6638.36	242.52	-151.46	-1941.24	3269252.25	1403133.72	40.4359726	-104.5327091	9.62	
7293.00	71.160	345.370	6674.33	330.02	-67.31	-1966.48	3269227.02	1403217.86	40.4362043	-104.5327964	8.28	
7387.00	77.270	352.530	6699.92	420.36	21.37	-1983.71	3269209.79	1403306.54	40.4364483	-104.5328548	9.79	
7482.00	83.710	1.310	6715.64	512.87	114.79	-1988.67	3269204.83	1403399.95	40.4367048	-104.5328690	11.36	
7577.00	90.890	3.590	6720.11	604.85	209.53	-1984.61	3269208.89	1403494.69	40.4369647	-104.5328507	7.93	
7671.00	90.180	3.380	6719.23	695.60	303.35	-1978.90	3269214.60	1403588.51	40.4372221	-104.5328265	0.79	
7766.00	89.880	1.020	6719.18	787.84	398.27	-1975.25	3269218.25	1403683.43	40.4374825	-104.5328097	2.50	
7861.00	90.180	359.960	6719.13	880.73	493.27	-1974.44	3269219.06	1403778.42	40.4377432	-104.5328030	1.16	
7955.00	90.310	359.950	6718.73	972.82	587.27	-1974.51	3269218.99	1403872.41	40.4380012	-104.5327996	0.14	
8050.00	90.060	359.890	6718.43	1065.90	682.27	-1974.64	3269218.86	1403967.41	40.4382620	-104.5327964	0.27	
8145.00	89.940	359.980	6718.43	1158.97	777.27	-1974.75	3269218.75	1404062.40	40.4385227	-104.5327930	0.16	
8239.00	90.430	359.940	6718.12	1251.06	871.26	-1974.82	3269218.68	1404156.40	40.4387807	-104.5327896	0.52	
8334.00	90.280	0.320	6717.53	1344.07	966.26	-1974.60	3269218.90	1404251.39	40.4390415	-104.5327851	0.43	

## REFERENCE WELLPATH IDENTIFICATION

Operator	NOBLE ENERGY, INC	Well	Reveille A34-735
Field	WELD COUNTY (NOBLE NAD 83 GRID)	API/Legal	
Facility	SEC.35-T06N-R64W	Wellbore	Reveille A34-735 AWB
Slot	SLOT#16 Reveille A34-735 (260'FSL & 293'FWL,SEC.35)		

## WELLPATH DATA (185 stations)

MD [ft]	Inclination [°]	Azimuth [°]	TVD [ft]	Vert Sect [ft]	North [ft]	East [ft]	Grid East [US ft]	Grid North [US ft]	Latitude	Longitude	DLS [°/100ft]	Comments
8428.00	89.940	359.950	6717.35	1436.10	1060.26	-1974.38	3269219.12	1404345.39	40.4392995	-104.5327806	0.53	
8523.00	89.540	359.290	6717.78	1529.28	1155.26	-1975.01	3269218.49	1404440.38	40.4395602	-104.5327791	0.81	
8618.00	90.550	0.320	6717.71	1622.39	1250.26	-1975.33	3269218.17	1404535.38	40.4398210	-104.5327766	1.52	
8713.00	89.940	0.040	6717.30	1715.38	1345.25	-1975.03	3269218.46	1404630.37	40.4400817	-104.5327718	0.71	
8808.00	90.060	359.920	6717.30	1808.44	1440.25	-1975.07	3269218.43	1404725.37	40.4403424	-104.5327682	0.18	
8902.00	90.430	359.880	6716.90	1900.55	1534.25	-1975.23	3269218.27	1404819.36	40.4406005	-104.5327651	0.40	
9091.00	90.000	0.210	6716.19	2085.65	1723.25	-1975.08	3269218.42	1405008.35	40.4411192	-104.5327572	0.29	
9186.00	90.120	0.110	6716.09	2178.65	1818.25	-1974.82	3269218.68	1405103.35	40.4413799	-104.5327525	0.16	
9281.00	90.180	358.680	6715.84	2271.90	1913.24	-1975.82	3269217.68	1405198.33	40.4416407	-104.5327524	1.51	
9375.00	89.630	359.190	6716.00	2364.31	2007.22	-1977.57	3269215.93	1405292.31	40.4418987	-104.5327550	0.80	
9470.00	90.430	358.280	6715.95	2457.76	2102.20	-1979.67	3269213.83	1405387.29	40.4421594	-104.5327588	1.28	
9564.00	90.090	359.280	6715.52	2550.21	2196.18	-1981.67	3269211.83	1405481.26	40.4424174	-104.5327623	1.12	
9659.00	89.880	359.230	6715.55	2643.51	2291.17	-1982.90	3269210.60	1405576.25	40.4426782	-104.5327630	0.23	
9754.00	89.570	359.080	6716.00	2736.83	2386.16	-1984.30	3269209.20	1405671.23	40.4429390	-104.5327643	0.36	
9848.00	90.180	358.610	6716.21	2829.27	2480.14	-1986.20	3269207.30	1405765.21	40.4431970	-104.5327674	0.82	
9943.00	90.120	359.380	6715.96	2922.64	2575.12	-1987.86	3269205.63	1405860.19	40.4434577	-104.5327697	0.81	
10037.00	88.460	357.880	6717.13	3015.13	2669.08	-1990.11	3269203.39	1405954.14	40.4437157	-104.5327741	2.38	
10132.00	89.910	359.160	6718.48	3108.64	2764.03	-1992.56	3269200.94	1406049.09	40.4439764	-104.5327792	2.04	
10226.00	90.340	359.240	6718.27	3200.97	2858.02	-1993.88	3269199.62	1406143.08	40.4442344	-104.5327802	0.47	
10321.00	90.120	358.460	6717.89	3294.38	2953.00	-1995.78	3269197.72	1406238.06	40.4444951	-104.5327833	0.85	
10416.00	90.180	359.090	6717.64	3387.82	3047.98	-1997.81	3269195.69	1406333.03	40.4447559	-104.5327869	0.67	
10510.00	90.030	358.950	6717.47	3480.21	3141.97	-1999.42	3269194.08	1406427.01	40.4450139	-104.5327890	0.22	
10605.00	89.820	359.160	6717.59	3573.57	3236.95	-2000.99	3269192.51	1406522.00	40.4452747	-104.5327909	0.31	
10699.00	90.680	359.310	6717.18	3665.88	3330.94	-2002.24	3269191.26	1406615.98	40.4455327	-104.5327917	0.93	
10794.00	89.780	359.350	6716.80	3759.15	3425.94	-2003.35	3269190.15	1406710.97	40.4457934	-104.5327920	0.95	
10888.00	90.370	0.940	6716.68	3851.18	3519.93	-2003.12	3269190.38	1406804.96	40.4460514	-104.5327875	1.80	
10983.00	90.370	0.110	6716.07	3944.05	3614.93	-2002.25	3269191.25	1406899.95	40.4463121	-104.5327806	0.87	
11078.00	90.250	359.340	6715.55	4037.19	3709.92	-2002.70	3269190.80	1406994.94	40.4465729	-104.5327785	0.82	
11172.00	90.090	0.310	6715.27	4129.32	3803.92	-2002.99	3269190.51	1407088.94	40.4468309	-104.5327759	1.05	
11267.00	90.460	0.180	6714.82	4222.29	3898.92	-2002.58	3269190.92	1407183.93	40.4470916	-104.5327707	0.41	

### REFERENCE WELLPATH IDENTIFICATION

Operator	NOBLE ENERGY, INC	Well	Reveille A34-735
Field	WELD COUNTY (NOBLE NAD 83 GRID)	API/Legal	
Facility	SEC.35-T06N-R64W	Wellbore	Reveille A34-735 AWB
Slot	SLOT#16 Reveille A34-735 (260'FSL & 293'FWL,SEC.35)		

### WELLPATH DATA (185 stations)

MD [ft]	Inclination [°]	Azimuth [°]	TVD [ft]	Vert Sect [ft]	North [ft]	East [ft]	Grid East [US ft]	Grid North [US ft]	Latitude	Longitude	DLS [°/100ft]	Comments
11361.00	89.880	359.440	6714.54	4314.43	3992.92	-2002.89	3269190.60	1407277.93	40.4473496	-104.5327681	1.00	
11456.00	90.150	359.160	6714.51	4407.71	4087.91	-2004.06	3269189.44	1407372.92	40.4476104	-104.5327686	0.41	
11550.00	90.400	0.210	6714.06	4499.88	4181.91	-2004.57	3269188.93	1407466.91	40.4478684	-104.5327667	1.15	
11739.00	90.000	359.330	6713.40	4685.16	4370.90	-2005.33	3269188.17	1407655.90	40.4483871	-104.5327621	0.51	
11834.00	90.150	358.910	6713.28	4778.50	4465.89	-2006.79	3269186.71	1407750.88	40.4486479	-104.5327636	0.47	
11929.00	90.710	359.700	6712.57	4871.77	4560.88	-2007.94	3269185.56	1407845.87	40.4489087	-104.5327640	1.02	
12023.00	91.020	0.560	6711.15	4963.79	4654.87	-2007.73	3269185.77	1407939.85	40.4491666	-104.5327596	0.97	
12118.00	90.740	0.820	6709.69	5056.60	4749.85	-2006.59	3269186.91	1408034.83	40.4494273	-104.5327517	0.40	
12212.00	90.060	358.210	6709.03	5148.82	4843.83	-2007.38	3269186.12	1408128.81	40.4496853	-104.5327509	2.87	
12307.00	89.970	357.500	6709.01	5242.52	4938.77	-2010.94	3269182.56	1408223.74	40.4499459	-104.5327600	0.75	
12401.00	90.430	358.660	6708.68	5335.18	5032.71	-2014.09	3269179.41	1408317.68	40.4502039	-104.5327676	1.33	
12496.00	90.180	358.070	6708.17	5428.74	5127.67	-2016.80	3269176.70	1408412.64	40.4504646	-104.5327736	0.67	
12590.00	89.600	355.810	6708.35	5521.69	5221.53	-2021.81	3269171.69	1408506.49	40.4507224	-104.5327880	2.48	
12685.00	89.910	356.380	6708.76	5615.83	5316.31	-2028.28	3269165.22	1408601.27	40.4509827	-104.5328075	0.68	
12779.00	90.650	358.170	6708.30	5708.69	5410.20	-2032.75	3269160.75	1408695.15	40.4512405	-104.5328199	2.06	
12874.00	91.260	359.880	6706.72	5802.04	5505.16	-2034.37	3269159.13	1408790.12	40.4515012	-104.5328219	1.91	
12969.00	91.390	0.020	6704.52	5895.09	5600.14	-2034.45	3269159.05	1408885.09	40.4517619	-104.5328185	0.20	
13063.00	90.860	359.590	6702.67	5987.21	5694.12	-2034.77	3269158.73	1408979.06	40.4520199	-104.5328160	0.73	
13158.00	91.480	359.370	6700.73	6080.41	5789.10	-2035.63	3269157.87	1409074.03	40.4522806	-104.5328154	0.69	
13252.00	91.200	359.970	6698.54	6172.57	5883.07	-2036.17	3269157.33	1409168.00	40.4525385	-104.5328136	0.70	
13347.00	91.420	359.410	6696.36	6265.70	5978.04	-2036.69	3269156.81	1409262.97	40.4527992	-104.5328117	0.63	
13442.00	89.600	359.660	6695.52	6358.90	6073.03	-2037.46	3269156.04	1409357.96	40.4530600	-104.5328108	1.93	
13536.00	89.910	359.510	6695.92	6451.11	6167.03	-2038.14	3269155.36	1409451.95	40.4533180	-104.5328096	0.37	
13631.00	89.970	359.970	6696.02	6544.25	6262.03	-2038.57	3269154.93	1409546.95	40.4535787	-104.5328074	0.49	
13725.00	90.150	0.720	6695.92	6636.20	6356.02	-2038.01	3269155.50	1409640.94	40.4538367	-104.5328017	0.82	
13820.00	90.120	0.290	6695.70	6729.09	6451.02	-2037.17	3269156.33	1409735.93	40.4540974	-104.5327949	0.45	
13915.00	90.060	0.750	6695.55	6821.96	6546.01	-2036.31	3269157.20	1409830.92	40.4543581	-104.5327881	0.49	
14010.00	90.000	359.860	6695.50	6914.91	6641.01	-2035.80	3269157.70	1409925.92	40.4546189	-104.5327826	0.94	
14104.00	90.220	0.470	6695.32	7006.93	6735.01	-2035.53	3269157.97	1410019.91	40.4548768	-104.5327779	0.69	
14199.00	89.630	359.980	6695.44	7099.91	6830.01	-2035.16	3269158.34	1410114.91	40.4551376	-104.5327728	0.81	



## REFERENCE WELLPATH IDENTIFICATION

Operator	NOBLE ENERGY, INC	Well	Reveille A34-735
Field	WELD COUNTY (NOBLE NAD 83 GRID)	API/Legal	
Facility	SEC.35-T06N-R64W	Wellbore	Reveille A34-735 AWB
Slot	SLOT#16 Reveille A34-735 (260'FSL & 293'FWL,SEC.35)		

## WELLPATH DATA (185 stations)

MD [ft]	Inclination [°]	Azimuth [°]	TVD [ft]	Vert Sect [ft]	North [ft]	East [ft]	Grid East [US ft]	Grid North [US ft]	Latitude	Longitude	DLS [°/100ft]	Comments
14294.00	89.570	0.230	6696.11	7192.93	6925.01	-2034.98	3269158.52	1410209.90	40.4553983	-104.5327685	0.27	
14388.00	89.600	0.110	6696.79	7284.94	7019.00	-2034.70	3269158.80	1410303.89	40.4556563	-104.5327638	0.13	
14483.00	89.690	0.320	6697.37	7377.92	7114.00	-2034.35	3269159.15	1410398.89	40.4559170	-104.5327588	0.24	
14578.00	89.570	359.690	6697.99	7470.97	7209.00	-2034.34	3269159.16	1410493.88	40.4561778	-104.5327551	0.68	
14672.00	89.600	359.360	6698.67	7563.20	7302.99	-2035.12	3269158.38	1410587.87	40.4564358	-104.5327542	0.35	
14767.00	89.750	0.650	6699.21	7656.25	7397.99	-2035.11	3269158.39	1410682.86	40.4566965	-104.5327504	1.37	
14862.00	89.820	1.180	6699.56	7748.98	7492.98	-2033.59	3269159.91	1410777.85	40.4569572	-104.5327412	0.56	
14956.00	89.660	0.780	6699.99	7840.72	7586.96	-2031.98	3269161.52	1410871.83	40.4572151	-104.5327318	0.46	
15051.00	89.850	0.530	6700.40	7933.55	7681.95	-2030.90	3269162.60	1410966.82	40.4574758	-104.5327242	0.33	
15146.00	89.940	0.850	6700.57	8026.36	7776.95	-2029.75	3269163.75	1411061.81	40.4577365	-104.5327163	0.35	
15240.00	90.000	1.820	6700.62	8117.97	7870.92	-2027.56	3269165.94	1411155.78	40.4579943	-104.5327048	1.03	
15335.00	89.660	0.020	6700.90	8210.70	7965.90	-2026.04	3269167.46	1411250.76	40.4582550	-104.5326956	1.93	
15429.00	90.220	359.710	6701.00	8302.82	8059.90	-2026.26	3269167.24	1411344.75	40.4585130	-104.5326927	0.68	
15524.00	89.850	357.970	6700.94	8396.24	8154.88	-2028.18	3269165.32	1411439.72	40.4587737	-104.5326959	1.87	
15619.00	89.970	359.130	6701.09	8489.75	8249.85	-2030.59	3269162.91	1411534.69	40.4590345	-104.5327008	1.23	
15713.00	89.750	358.990	6701.32	8582.12	8343.84	-2032.13	3269161.37	1411628.67	40.4592925	-104.5327026	0.28	
15808.00	90.090	359.220	6701.45	8675.46	8438.82	-2033.61	3269159.89	1411723.66	40.4595532	-104.5327042	0.43	
15902.00	90.310	358.970	6701.13	8767.82	8532.81	-2035.10	3269158.40	1411817.64	40.4598113	-104.5327059	0.35	
15997.00	89.970	359.630	6700.89	8861.10	8627.80	-2036.26	3269157.24	1411912.63	40.4600720	-104.5327063	0.78	
16092.00	90.340	359.900	6700.64	8954.23	8722.80	-2036.65	3269156.85	1412007.62	40.4603328	-104.5327040	0.48	
16186.00	89.850	358.090	6700.48	9046.62	8816.78	-2038.30	3269155.20	1412101.60	40.4605908	-104.5327063	1.99	
16281.00	90.060	358.790	6700.56	9140.16	8911.75	-2040.88	3269152.62	1412196.56	40.4608515	-104.5327118	0.77	
16376.00	90.060	359.050	6700.46	9233.56	9006.73	-2042.67	3269150.83	1412291.54	40.4611123	-104.5327145	0.27	
16470.00	89.820	358.810	6700.56	9325.97	9100.71	-2044.43	3269149.07	1412385.52	40.4613703	-104.5327172	0.36	
16565.00	89.910	358.630	6700.78	9419.43	9195.69	-2046.55	3269146.95	1412480.49	40.4616310	-104.5327211	0.21	
16659.00	90.280	359.490	6700.62	9511.80	9289.68	-2048.09	3269145.41	1412574.47	40.4618890	-104.5327229	1.00	
16754.00	89.970	358.530	6700.42	9605.17	9384.66	-2049.74	3269143.77	1412669.45	40.4621498	-104.5327251	1.06	
16849.00	90.340	0.160	6700.16	9698.43	9479.65	-2050.82	3269142.68	1412764.44	40.4624105	-104.5327253	1.76	
16943.00	90.060	358.930	6699.83	9790.65	9573.64	-2051.57	3269141.93	1412858.43	40.4626685	-104.5327243	1.34	
17038.00	90.060	359.820	6699.73	9883.91	9668.64	-2052.60	3269140.90	1412953.42	40.4629293	-104.5327243	0.94	



## REFERENCE WELLPATH IDENTIFICATION

Operator	NOBLE ENERGY, INC	Well	Reveille A34-735
Field	WELD COUNTY (NOBLE NAD 83 GRID)	API/Legal	
Facility	SEC.35-T06N-R64W	Wellbore	Reveille A34-735 AWB
Slot	SLOT#16 Reveille A34-735 (260'FSL & 293'FWL,SEC.35)		

## WELLPATH DATA (185 stations) † = interpolated, ‡ = extrapolated station

MD [ft]	Inclination [°]	Azimuth [°]	TVD [ft]	Vert Sect [ft]	North [ft]	East [ft]	Grid East [US ft]	Grid North [US ft]	Latitude	Longitude	DLS [°/100ft]	Comments
17132.00	90.220	359.480	6699.50	9976.10	9762.64	-2053.18	3269140.32	1413047.42	40.4631873	-104.5327227	0.40	
17227.00	90.150	358.970	6699.19	10069.40	9857.63	-2054.46	3269139.04	1413142.40	40.4634481	-104.5327236	0.54	
17321.00	90.180	359.590	6698.92	10161.71	9951.62	-2055.64	3269137.86	1413236.39	40.4637061	-104.5327241	0.66	
17394.00	89.820	359.080	6698.92	10233.38	10024.61	-2056.49	3269137.01	1413309.38	40.4639064	-104.5327243	0.86	LAST BH MWD SURVEY
17418.00‡	89.820	359.080	6699.00	10256.96	10048.61	-2056.88	3269136.63	1413333.38	40.4639723	-104.5327247	0.00	PROJECTION TO BIT

## HOLE & CASING SECTIONS - Ref Wellbore: Reveille A34-735 AWB Ref Wellpath: Reveille A34-735 AWP

String/Diameter	Start MD [ft]	End MD [ft]	Interval [ft]	Start TVD [ft]	End TVD [ft]	Start N/S [ft]	Start E/W [ft]	End N/S [ft]	End E/W [ft]
9.625in Casing Surface	30.00	1934.10	1904.10	30.00	1933.99	-0.03	-0.02	-12.28	-5.38

## REFERENCE WELLPATH IDENTIFICATION

Operator	NOBLE ENERGY, INC	Well	Reveille A34-735
Field	WELD COUNTY (NOBLE NAD 83 GRID)	API/Legal	
Facility	SEC.35-T06N-R64W	Wellbore	Reveille A34-735 AWB
Slot	SLOT#16 Reveille A34-735 (260'FSL & 293'FWL,SEC.35)		

## TARGETS

Name	TVD [ft]	North [ft]	East [ft]	Grid East [US ft]	Grid North [US ft]	Latitude	Longitude	Shape
SEC.26-T06N-R64W	20.00	247.08	-4069.93	3267123.65	1403532.24	40.4371300	-104.5403400	polygon
	2D Polygon: dimensions not calculated							
SEC.27-T06N-R64W	20.00	247.08	-4069.93	3267123.65	1403532.24	40.4371300	-104.5403400	polygon
	2D Polygon: dimensions not calculated							
SEC.34-T06N-R64W	20.00	247.08	-4069.93	3267123.65	1403532.24	40.4371300	-104.5403400	polygon
	2D Polygon: dimensions not calculated							
SEC.35-T06N-R64W	20.00	247.08	-4069.93	3267123.65	1403532.24	40.4371300	-104.5403400	polygon
	2D Polygon: dimensions not calculated							
Reveille A34-735 BHL REV-1 (200'FNL & 1665'FEL,SEC.27)	6701.00	10049.09	-2065.75	3269127.75	1413333.86	40.4639739	-104.5327566	point
Reveille A34-735 TPZ REV-1 (460'FSL & 1678'FEL,SEC.34)	6718.00	162.99	-1971.99	3269221.51	1403448.16	40.4368366	-104.5328072	point

## WELLPATH COMPOSITION - Ref Wellbore: Reveille A34-735 AWB Ref Wellpath: Reveille A34-735 AWP

Start MD [ft]	End MD [ft]	Positional Uncertainty Model	Log Name/Comment	Wellbore	Survey Date
0.00	1925.00	Gyrodatta 2015 - GC+DROP+COND	Gyrodatta 2015 - GC+DROP+COND 13-1/2" <82 - 1925>	Reveille A34-735 AWB	1/4/2021
1925.00	17418.00	OWSG MWD rev2 (MS+IFR1) NOBLE	OWSG MWD rev2 (MS+IFR1) NOBLE 8-1/2" <1996 - 17394>	Reveille A34-735 AWB	1/4/2021

## REFERENCE WELLPATH IDENTIFICATION

Operator	NOBLE ENERGY, INC	Well	Reveille A34-735
Field	WELD COUNTY (NOBLE NAD 83 GRID)	API/Legal	
Facility	SEC.35-T06N-R64W	Wellbore	Reveille A34-735 AWB
Slot	SLOT#16 Reveille A34-735 (260'FSL & 293'FWL,SEC.35)		

## WELLPATH COMMENTS

MD [ft]	Inclination [°]	Azimuth [°]	TVD [ft]	Comment
82.00	0.340	213.450	82.00	FIRST GYRODATA SURVEY
1925.00	1.440	181.310	1924.89	LAST GYRODATA SURVEY
1996.00	1.260	162.930	1995.87	FIRST BH MWD SURVEY
17394.00	89.820	359.080	6698.92	LAST BH MWD SURVEY
17418.00	89.820	359.080	6699.00	PROJECTION TO BIT