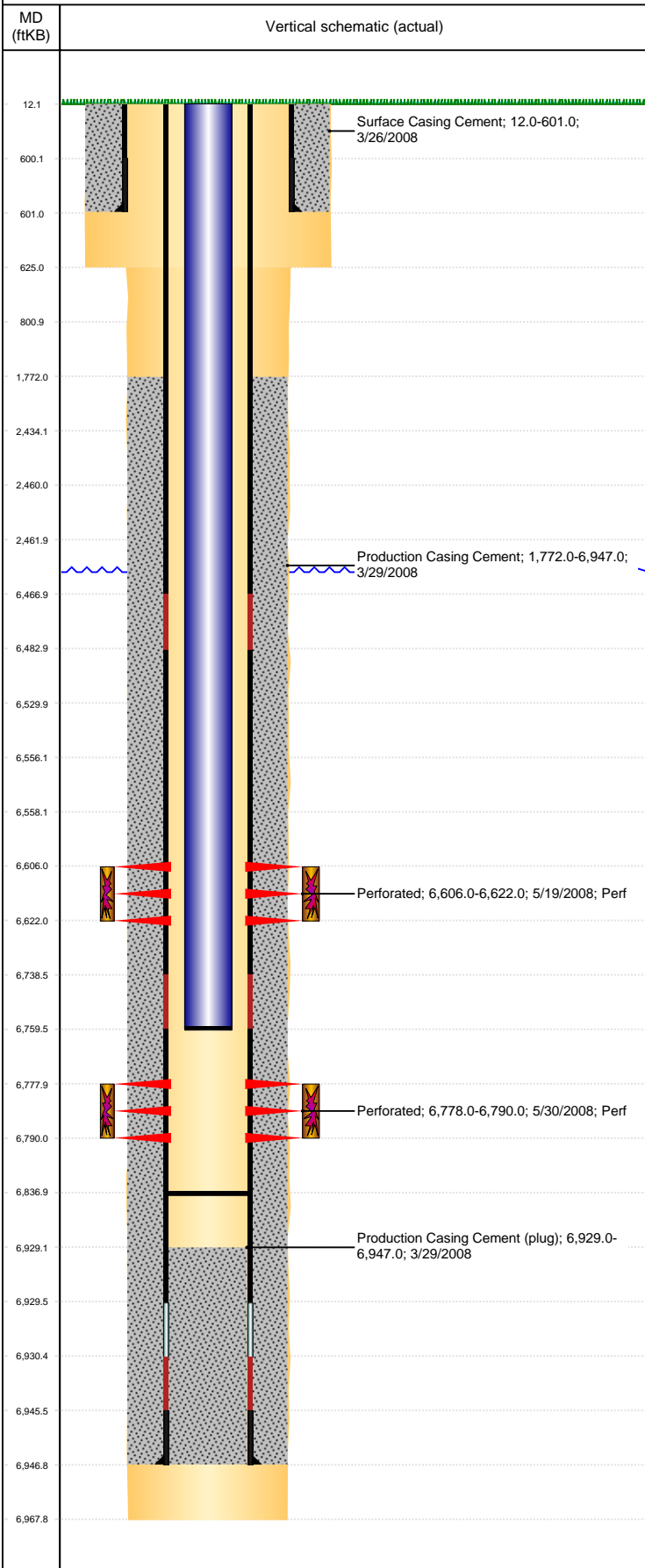


**Well Name: WELLS RANCH AA26-08**

VERTICAL, ORIGINAL HOLE, 3/30/2021 4:02:14 PM



Well Header									
API 05-123-25381			Business Unit DJ BASIN			District 15		Well Config VERTICAL	
KB - GL / MSL (ft... 12.00		Spud Date 3/25/2008		P & A Date		Well Production Status TA (AT SURFACE)			SoRT No
Comment									
Surface Location (Congressional)									
Qtr 3 SE	Qtr 4 NE	Section 26	Twonshp 6	Twonsh... N	Range 63	Rng E/... W	Actual Latitude (°) 40.45887672		Actual Longitude (°) -104.39710952
Wellbore Sections									
Section Des			Size (in)			Act Top, MD (ftKB)		Act Btm, MD (ftKB)	
SURFACE			12 1/4			12		625	
PRODUCTION			7 7/8			625		6,968	
Casing Strings									
Csg Des			Run Date		OD (in)	Wt/Len (lb/ft)	Grade	Top, MD (ftKB)	MD (ftKB)
Surface			3/26/2008		8 5/8	24.00	J-55	12.0	601.0
Production			3/29/2008		4 1/2	11.60	M-80	12.0	6,947.0
Cement									
Des					Start Date		Top (ftKB)		Btm (ftKB)
Surface Casing Cement					3/26/2008		12.0		601.0
Production Casing Cement					3/29/2008		1,772.0		6,947.0
Zone Statuses									
Zone Name		Status Date	Status	Fluid Type	Job				Prod Method
CODELL		5/22/2008	PR		DRILLING/COMPLETION - ORIGINAL, 3/24/2008...				
NIOBRARA		5/22/2008	PR		DRILLING/COMPLETION - ORIGINAL, 3/24/2008...				
Perforation Data									
Linked Zone			Bnch/Stg	Entered Shot Total	Top (ftKB)		Btm (ftKB)		Date
NIOBRARA, ORIGINAL HOLE			B	64	6,606.00		6,622.00		5/19/2008
CODELL, ORIGINAL HOLE				48	6,778.00		6,790.00		5/30/2008
Stimulation Intervals									
Zone					Start Date		Top (ftKB)		Btm (ftKB)
NIOBRARA, ORIGINAL HOLE					5/20/2008		6,606.0		6,622.0
CODELL, ORIGINAL HOLE					6/9/2008		6,778.0		6,790.0
Other In Hole									
Run Date		Des			Make		OD (in)	Top (ftKB)	Btm (ftKB)
Logs									
Date		Type					Top, MD (ftKB)		Btm, MD (ftKB)
3/29/2008		DIPOLE SONIC					580.0		6,924.0
3/29/2008		HIGH RESOLUTION INDUCTION					580.0		6,924.0
3/29/2008		SONIC					580.0		6,924.0
3/29/2008		SPECTRAL DENSITY DULA SPACED NEUTRON					580.0		6,924.0
3/29/2008		TRIPLE COMBO					580.0		6,924.0
4/14/2008		CBL/CCL/GR					1,690.0		6,902.0
5/8/2008		GYRO					0.0		6,916.0
Plug Back Total Depths									
Date		Type			Com				Depth (ftKB)
5/30/2008		FILL			RAN BIT & SCRAPER AND CLEANED OUT SAND TO 6929'				6,929.0
11/26/2013		FILL			C/O DOWN TO 6837				6,837.0