



## JOB REPORT

### COMPANY DETAILS

Company: Verdad Resources  
Lease: KBL 1930 7H  
Rig Name: IKON 12

Email:  
County: Weld  
State: CO

### JOB DETAILS

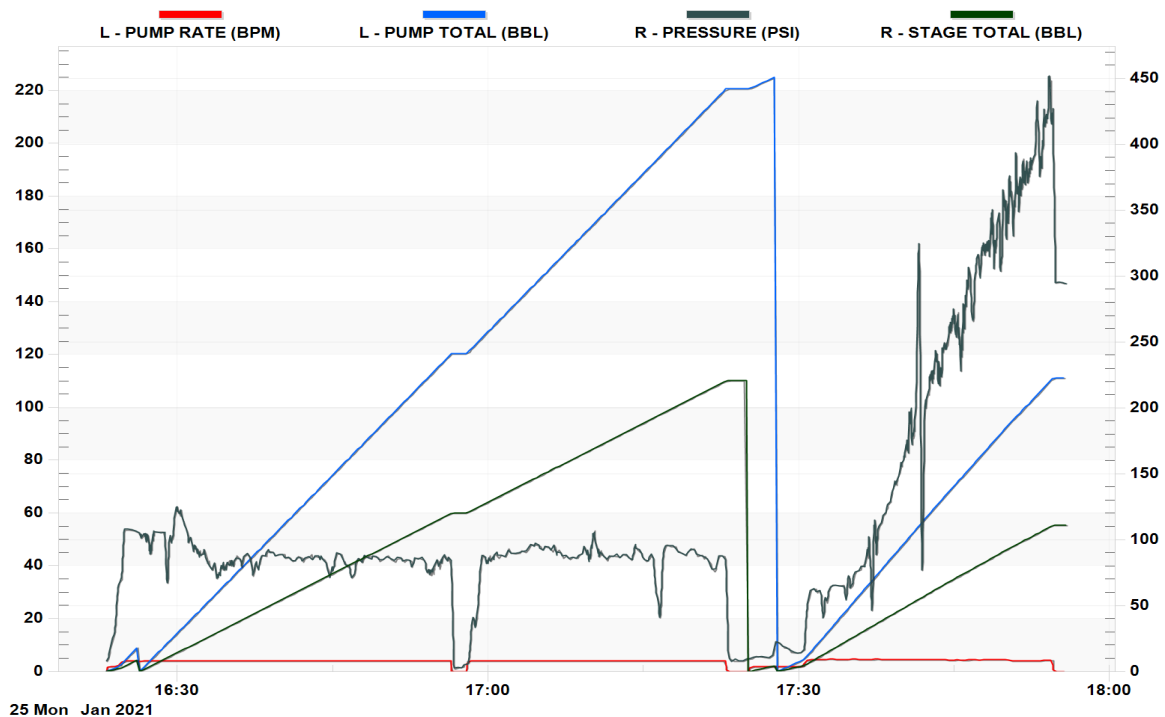
API 05-123-50890-00

DATE January 25, 2021  
START TIME 16:23:08  
END TIME 17:55:53  
Baffle Plate:  
Average Rate:  
Casing/Tubing:

TD: 1,809'  
Pipe Landed @: 1,794'  
Plug Landed @: 1,752'  
Plug Landed @: 18:00

Comments:

### SUMMARY GRAPH



# Cement Verification Report - Cementer's Well Service, Inc.

P.O. BOX 336220 • GREELEY, CO 80633 • (970) 353-7299 • FAX (970) 353-7712

COGCC Operator Guidance

RULE #308.A.B(2)A.ii



CLIENT: Verdad Resources

Cementer's  
FIELD TICKET #

300124-D

## Requested Operator Guidance:

1) Well Name & Number	Lease	KBL 1930	Well No.	7H
2) Well API Number	05123-50890			
3) Job Date	1/25/21	Time on	13:45	24 hr time
4) Job Type	New Well Surface			
5) Cementing Company	Cementer's Well Service, Inc	Contact	Nate Kvamme - 303-324-4296	
6) Ambient conditions	clear / rain / snow / other	25	temp deg F	
7) Slurry Description				
a) Purpose	Surface - 9 5/8" CSG, 13 1/2" hole			
b) Cement Class	Type I / II			
c) Cement Yield	1.61	cuft / sk		
d) Cement Density	13.9	PPG		
e) Number of sks	780	sks (94# equiv)		
f) Cement Volume (dry)	780	cuft (ft^3)		
g) Mix Fluid Type				
Water / Cement	8.5	Gal / sk		
h) Slurry mixed	223.7	BBLs slurry		
i) Additives used	1.50%	CaCl2		
	3.00%	Bentonite		
j) Displacement Fluid Vol	135.4	BBLs H2O		
k) Method of Placement				
l) Set Depth	1,794	feet (ft)		
m) Stage tool depth	n/a			
n) Float Collar Depth	1,752	feet (ft)		
o) Designed Top of Cement	n/a	to surface		
p) Centralizer depths	1751, 1709, 1668, 1586, 1509, 1427, 1344, 1263, 1180, 1098, 1017, 935, 852, 771, 689, 606, 532, 449, 369, 286, 202 (CB) feet (ft)			
8) Charts - (pressure, density, pump rate)				
Landed Plug @	1450	psi	Final Lift Pressure @	800 psi
Cement Density (as weighed during job) @	13.8	PPG		
9) Job notes				
a) Plug down	Y / N	Time	18:00	24 hr time
b) Floats held	Y / N			
c) Full Returns	Y / N	Lost Circulation	Y / N	
d) Cement to surface	Y / N	25	BBLs to surface	
e) If no returns, top off	BBLs			
f) Top off detail				