

Sec 20, T6S, R96W
GM 543-19
Q201069 & RM-200851
Plan 4

Company Name: Terra Energy Partners, LLP
GM 543-19
Garfield County, CO
Rig: KB=24" @ 5771.80usft (H&P #318)
Created by: Chase Chambers
Date: 15:59, January 26 2021

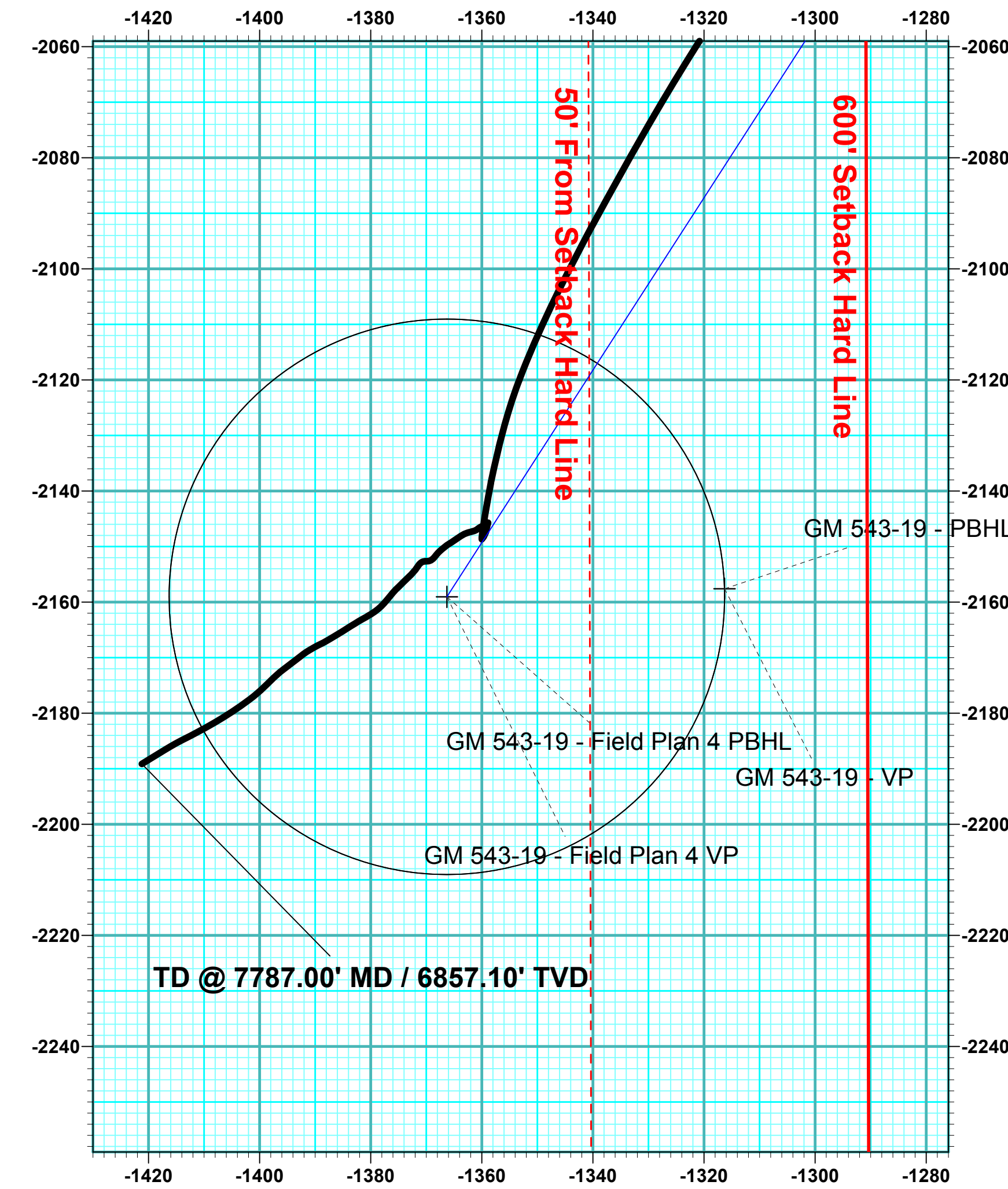
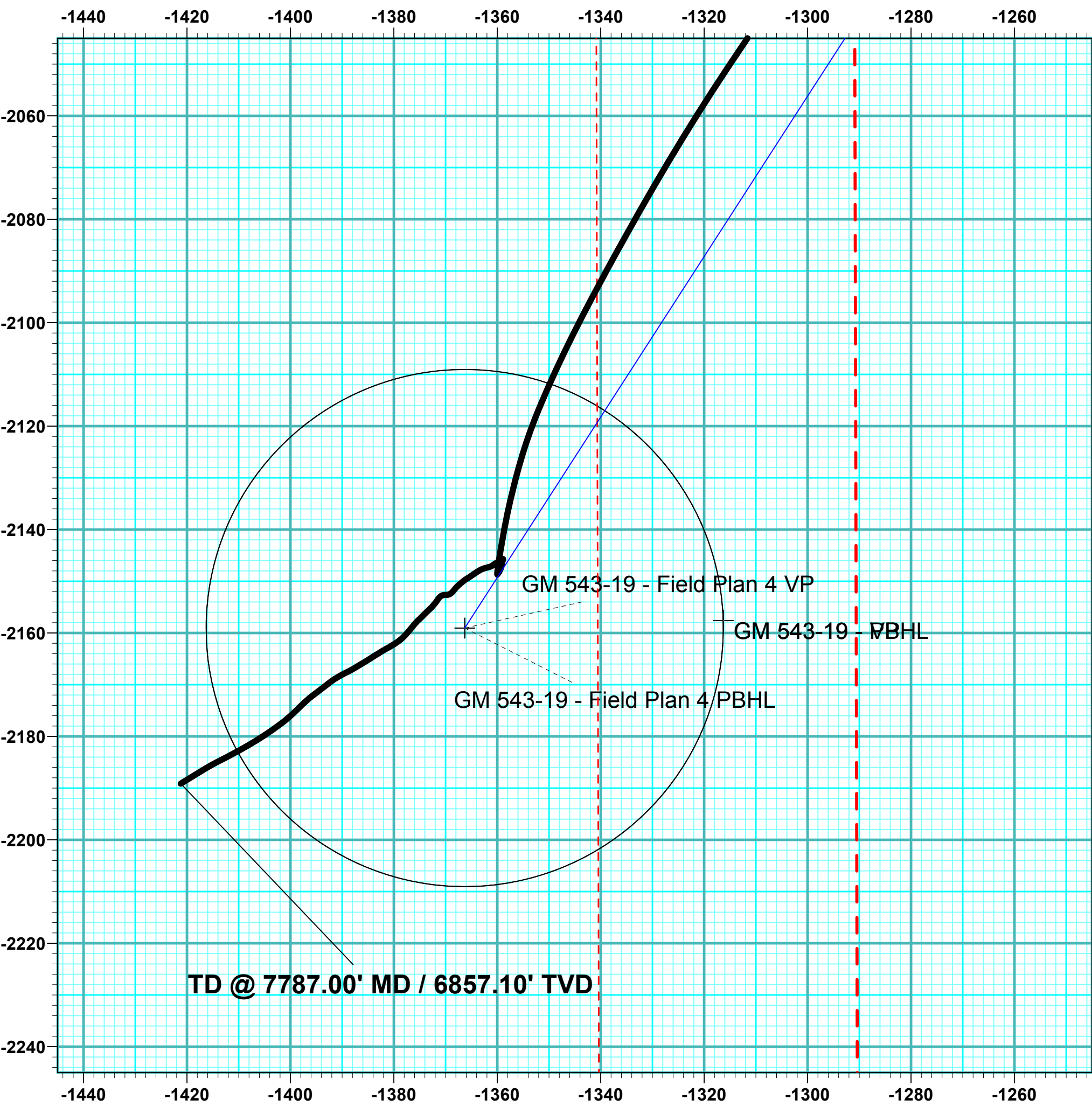
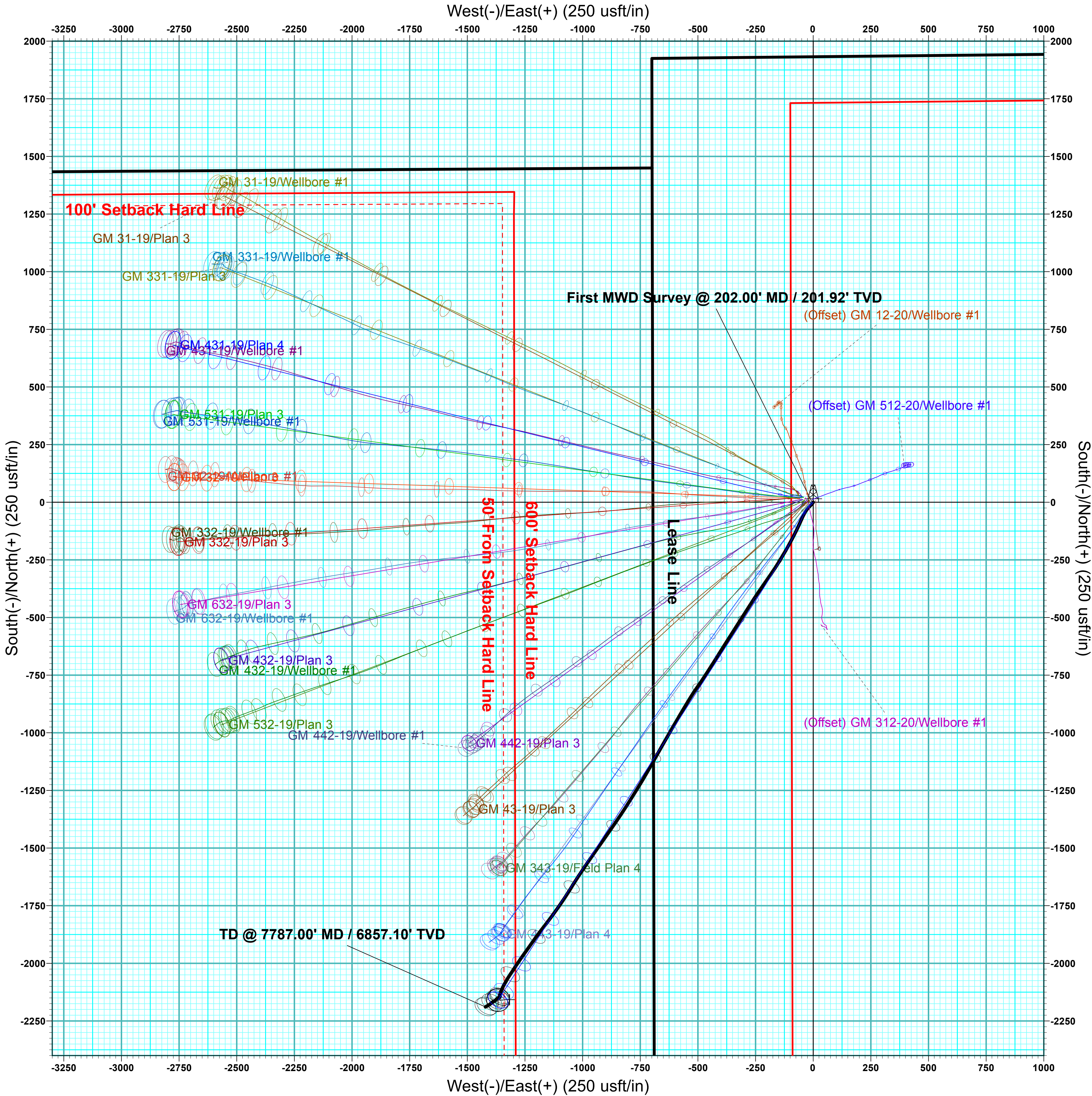
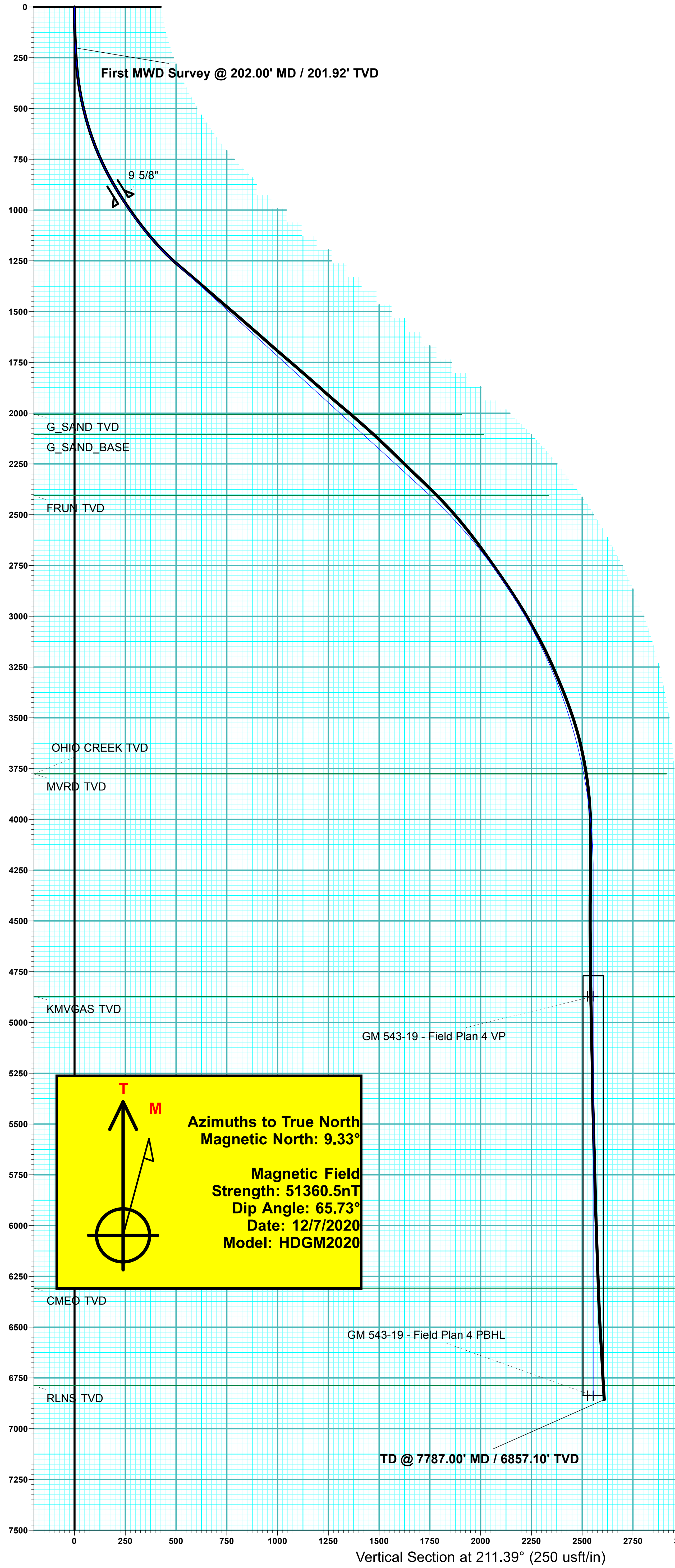
PROJECT DETAILS: Garfield County, CO

Geodetic System: US State Plane 1983
Datum: North American Datum 1983
Ellipsoid: GRS 1980
Zone: Colorado Central Zone
System Datum: Mean Sea Level



WELL DETAILS: GM 543-19					
Ground Elevation:		5747.80			
+N/-S	+E/-W	Northing	Easting	Latitude	Longitude
0.00	0.00	1622101.44	2255430.72	39.511752	-108.139403

DESIGN TARGET DETAILS							
Name	TVD	+N/-S	+E/-W	Northing	Easting	Latitude	Longitude
GM 543-19 - Field Plan 4 VP	4871.00	-2159.04	-1366.28	1619983.00	2254002.30	39.505825	-108.144245
GM 543-19 - VP	4871.00	-2157.59	-1316.30	1619983.00	2254052.30	39.505829	-108.144068
GM 543-19 - Field Plan 4 PBHL	6838.00	-2159.04	-1366.28	1619983.00	2254002.30	39.505825	-108.144245
GM 543-19 - PBHL	6838.00	-2157.59	-1316.30	1619983.00	2254052.30	39.505829	-108.144068



ANNOTATIONS									
MD	Inc	Azi	TVD	+N/-S	+E/-W	VSec	Departure	Annotation	
202.00	2.72	212.18	201.92	-4.06	-2.55	4.79	4.79	First MWD Survey @ 202.00' MD / 201.92' TVD	
7787.00	3.74	238.49	6857.10	-2189.13	-1421.19	2608.97	2628.99	TD @ 7787.00' MD / 6857.10' TVD	

DESIGN ANNOTATIONS									
MD	Inc	Azi	TVD	+N/-S	+E/-W	VSec	Departure	Annotation	
926.00	31.03	208.40	890.09	-175.65	-100.24	202.15	0.00	Tie-In @ 926.00' MD / 890.09' TVD	
975.00	31.03	208.40	932.08	-197.86	-112.25	227.37	25.26	Build 4"/100'	
1394.69	47.59	212.80	1255.73	-424.89	-248.62	492.20	290.15	EOB @ 47.59' Inc / 212.80° Azm	
3065.85	47.59	212.80	2382.73	-1462.08	-917.09	1725.77	1524.10	Drop 2.25"/100'	
4691.10	11.03	212.80	3776.00	-2119.53	-1340.82	2507.70	2306.11	MSVRD Crossing @ 11.03° Inc / 212.80° Azm / 4691.10' MD / 3776.00' TVD	
5181.12	0.00	0.00	4263.00	-2159.04	-1366.28	2554.68	2353.27	EOD @ Vertical	
7756.12	0.00	0.00	6838.00	-2159.04	-1366.28	2554.68	2353.27	TD @ 7756.12' MD / 6838.00' TVD	

FORMATION TOP DETAILS		
TVDPath	MDPath	Formation
2006.00	2507.22	G_SAND TVD
2106.00	2655.50	G_SAND_BASE
2406.00	3100.10	FRUN TVD
3776.00	4691.10	MVRD TVD
3776.00	4691.10	OHIO CREEK TVD
4871.00	5789.12	KMGAS TVD
6308.00	7226.12	CMEO TVD
6788.00	7706.12	RLNS TVD