

Pulsed Neutron Emulated OH Log



Company:	TEP Rocky Mountain LLC
Well:	Chevron GM 543-19
Field:	Grand Valley
County:	Garfield
State:	Colorado
API:	05-045-24356
Location:	Sec: 20 Twp: 6S Rng: 96W
Date PN Data Logged:	01-FEB-2021
Date Processed:	11-FEB-2021
PN Data Recorded By:	A. Ellsworth
Log Analyst:	J. Sichel
Elevations:	KB: 5776.1' DF: --- GL: 5752.1'

Any interpretation of logs or survey, either through optical or electronic processing means or otherwise, or any recommendation or description of any reservoir based on such interpretations of other data, are opinions based upon measurements, assumptions and empirical relationships, which inferences and assumptions are not incapable of error. We cannot and do not guarantee the accuracy, correctness or completeness of such interpretations, recommendations or descriptions and Company agrees that we shall not be liable or responsible for any loss, cost, damage or expense incurred or sustained by Company resulting directly or indirectly therefrom. Under no circumstances should any such interpretation, recommendation or description be relied upon as the basis for any procedure conducted in or on a well which involves any risk to the safety of personnel, equipment or venture. Company shall always have full responsibility for such decisions and for all decisions concerning other procedures relating to drilling, completion or production operations.

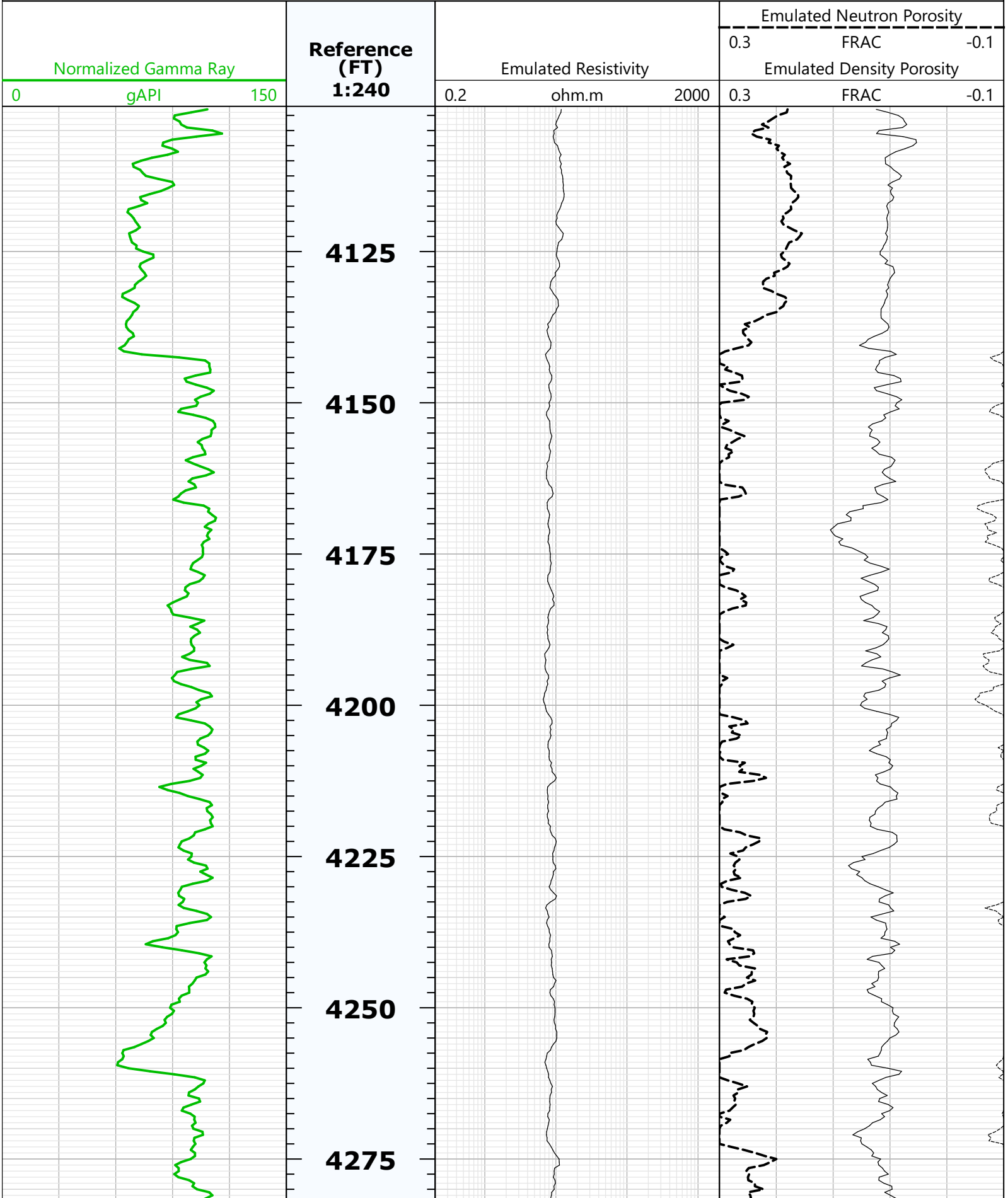
Casing Record	Size (in)	Weight (lbs/ft)	Grade	Top	Bottom
Surface	9 5/8	36	J-55	Surface	1040 FT
Production	4 1/2	11.6	P-110	Surface	7745 FT

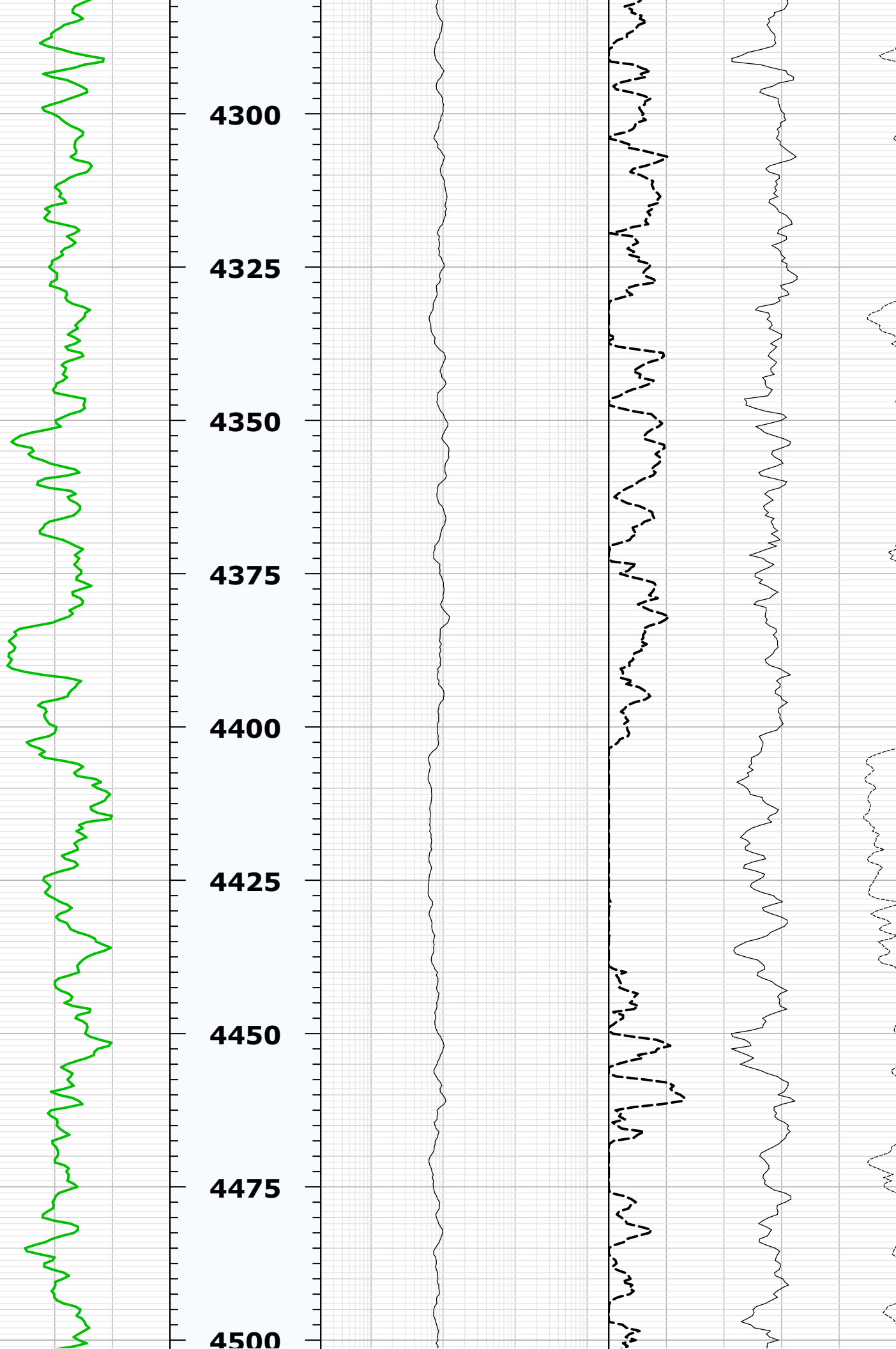
This well is an Offset Well
 Training Well: Chevron GM 311-21
 Emulated using Baker Hughes OH and PN data provided by the client
 Depth referenced to Reliance RBL dated 03-FEB-2021
 Density Porosity Matrix = 2.68 g/cc
 Emulation results may be affected by areas of poor bond
 Emulated results may be affected by washouts and quality of OH data
 Emulation results may be affected by proximity to the TW location

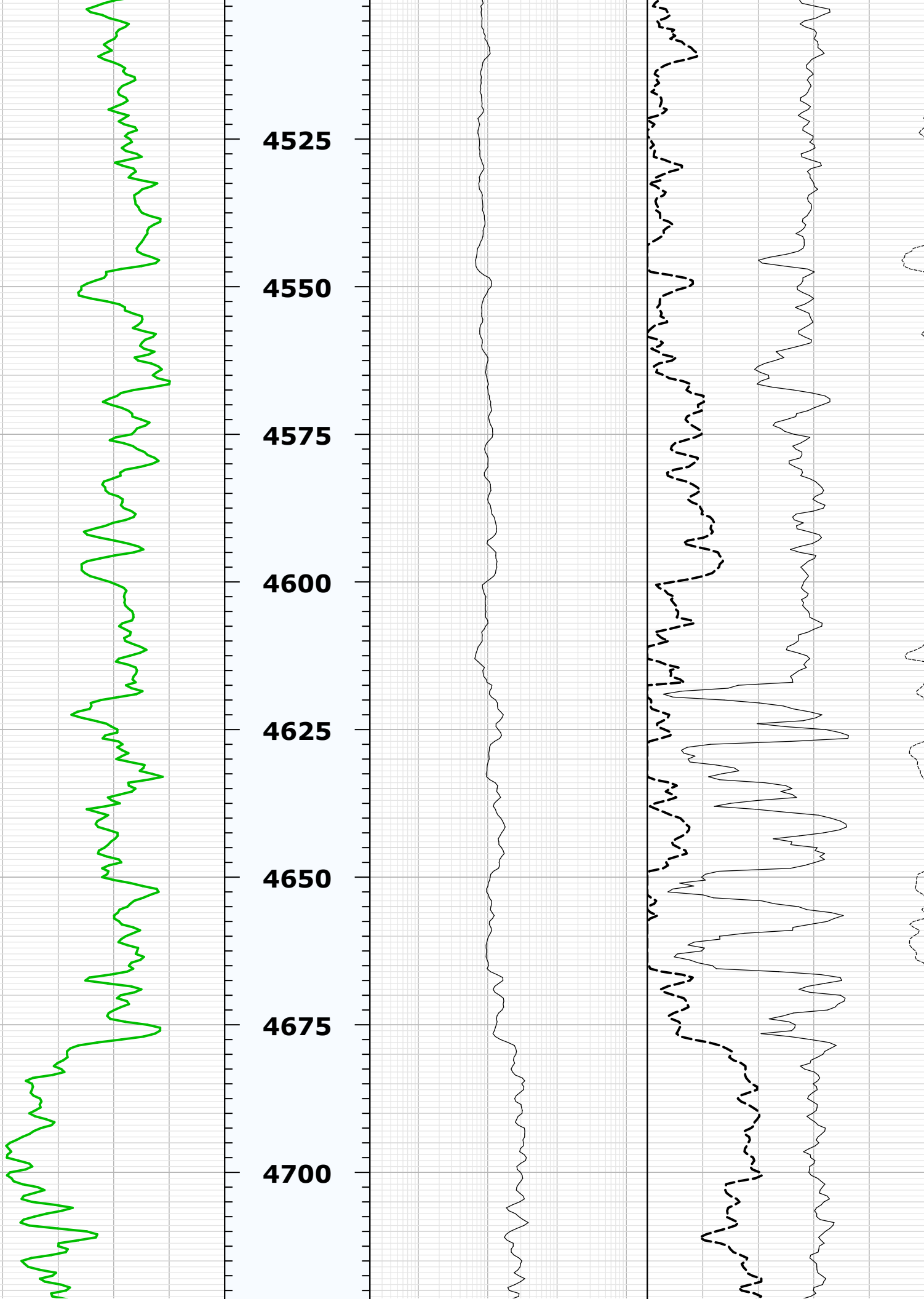
Thank you for choosing Reliance Oilfield Services, LLC!!

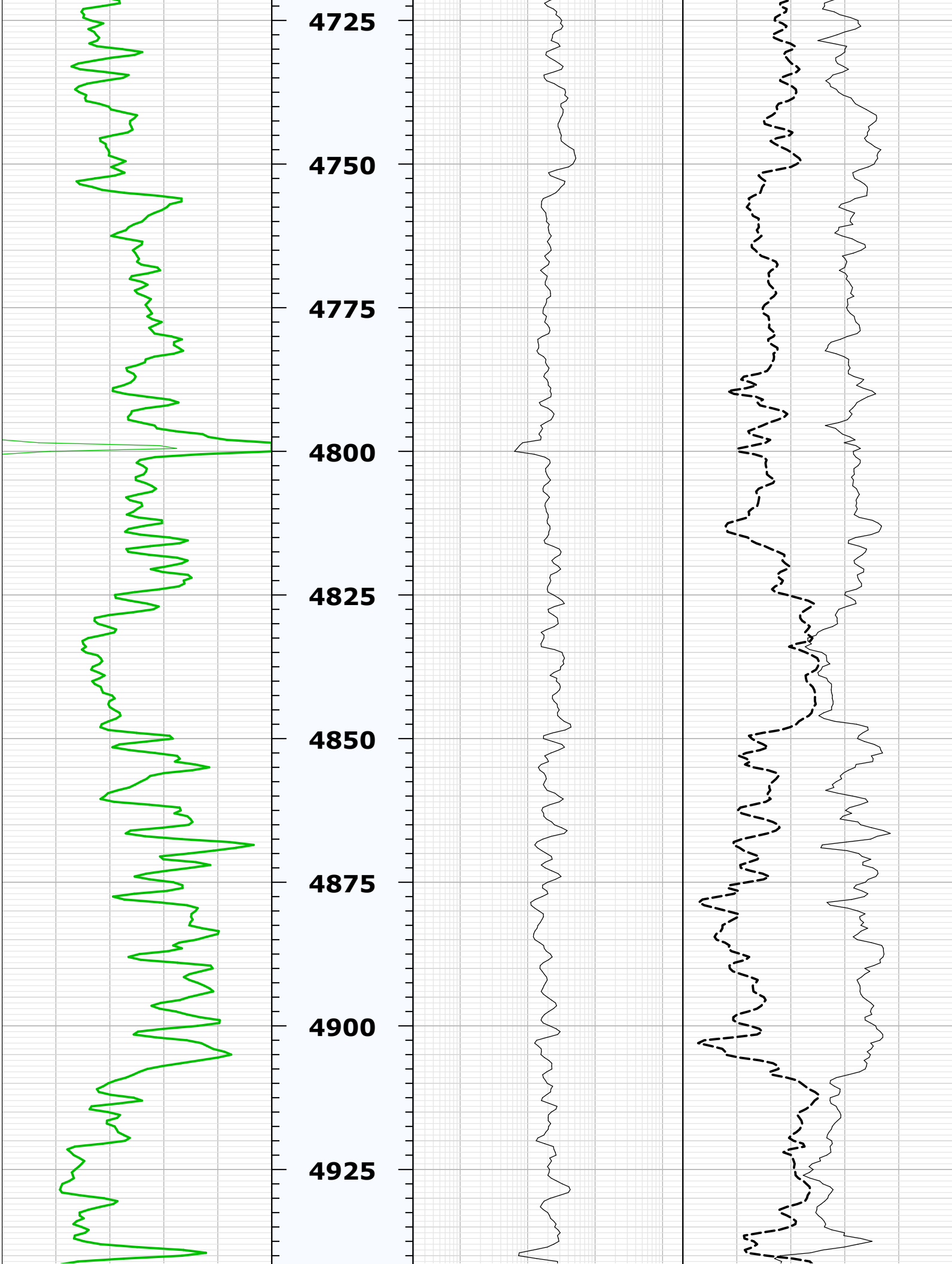


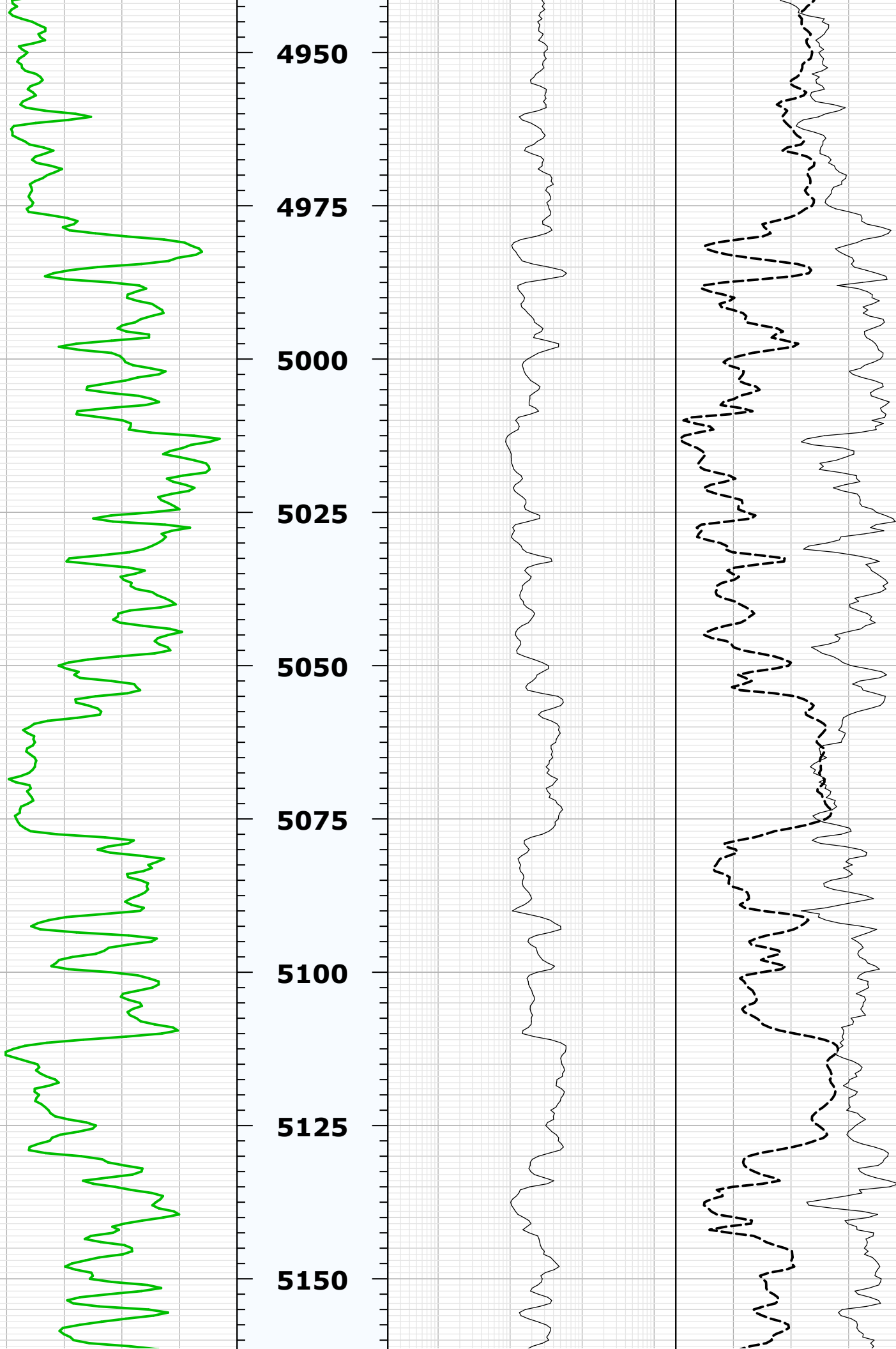
Main Pass

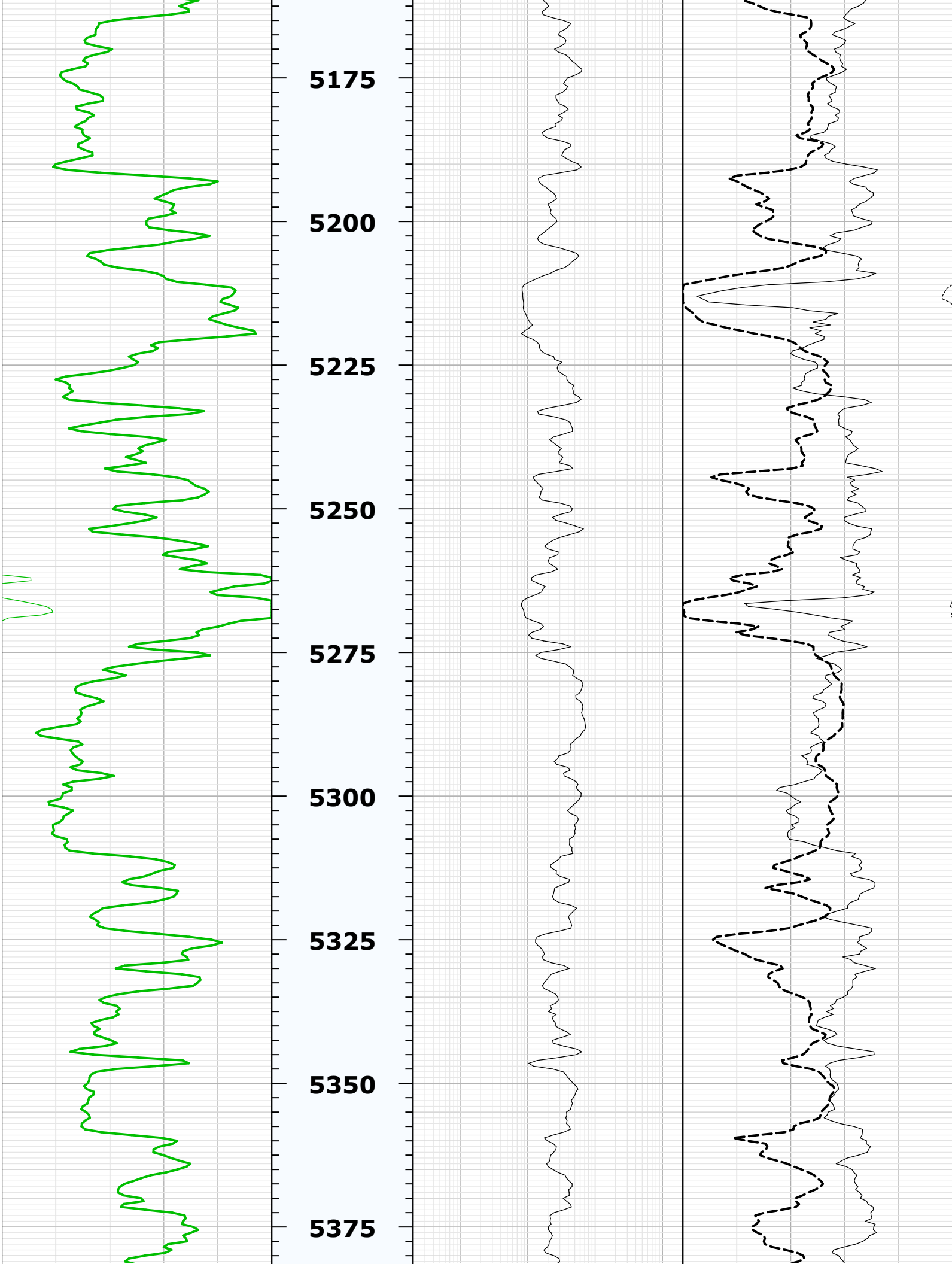


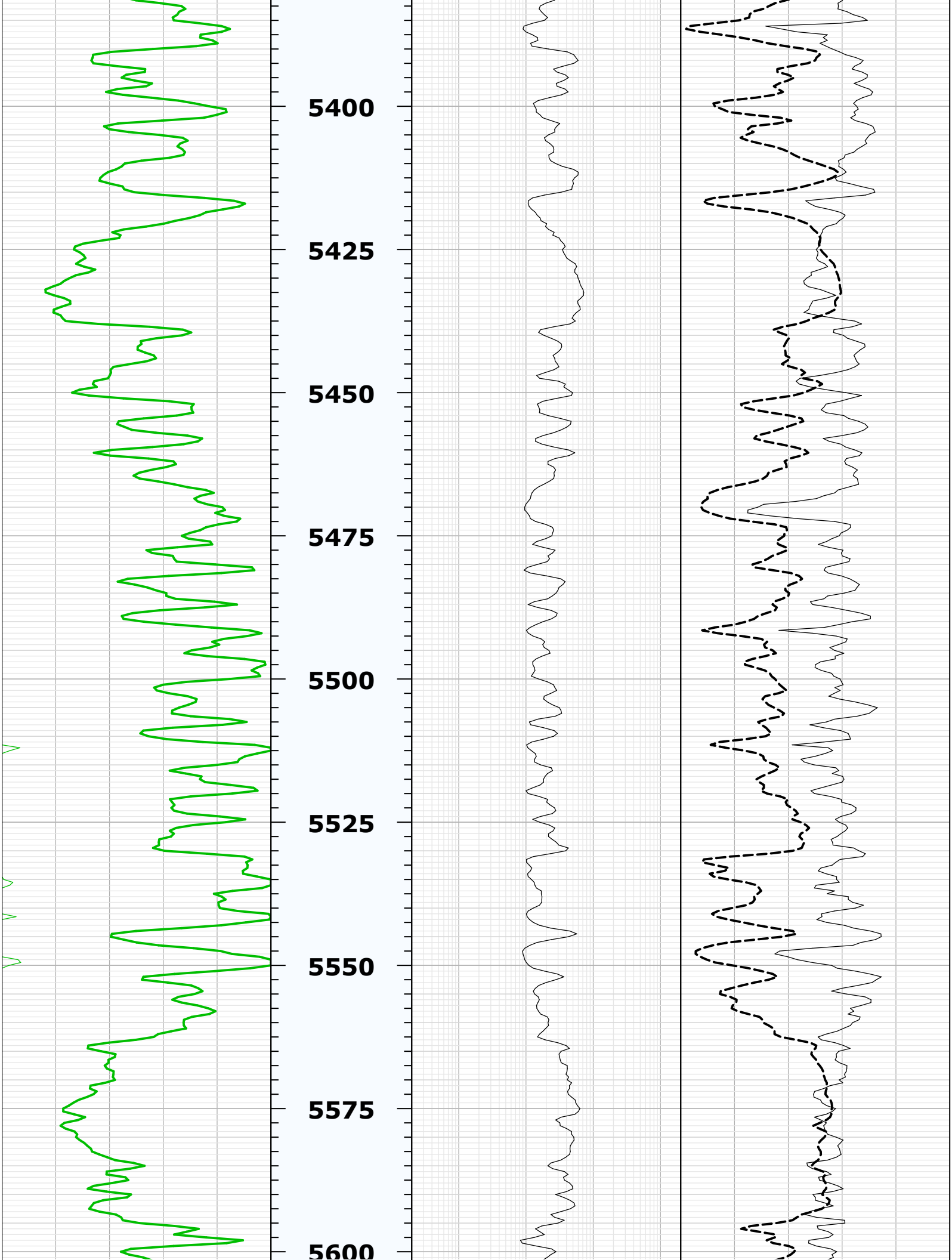


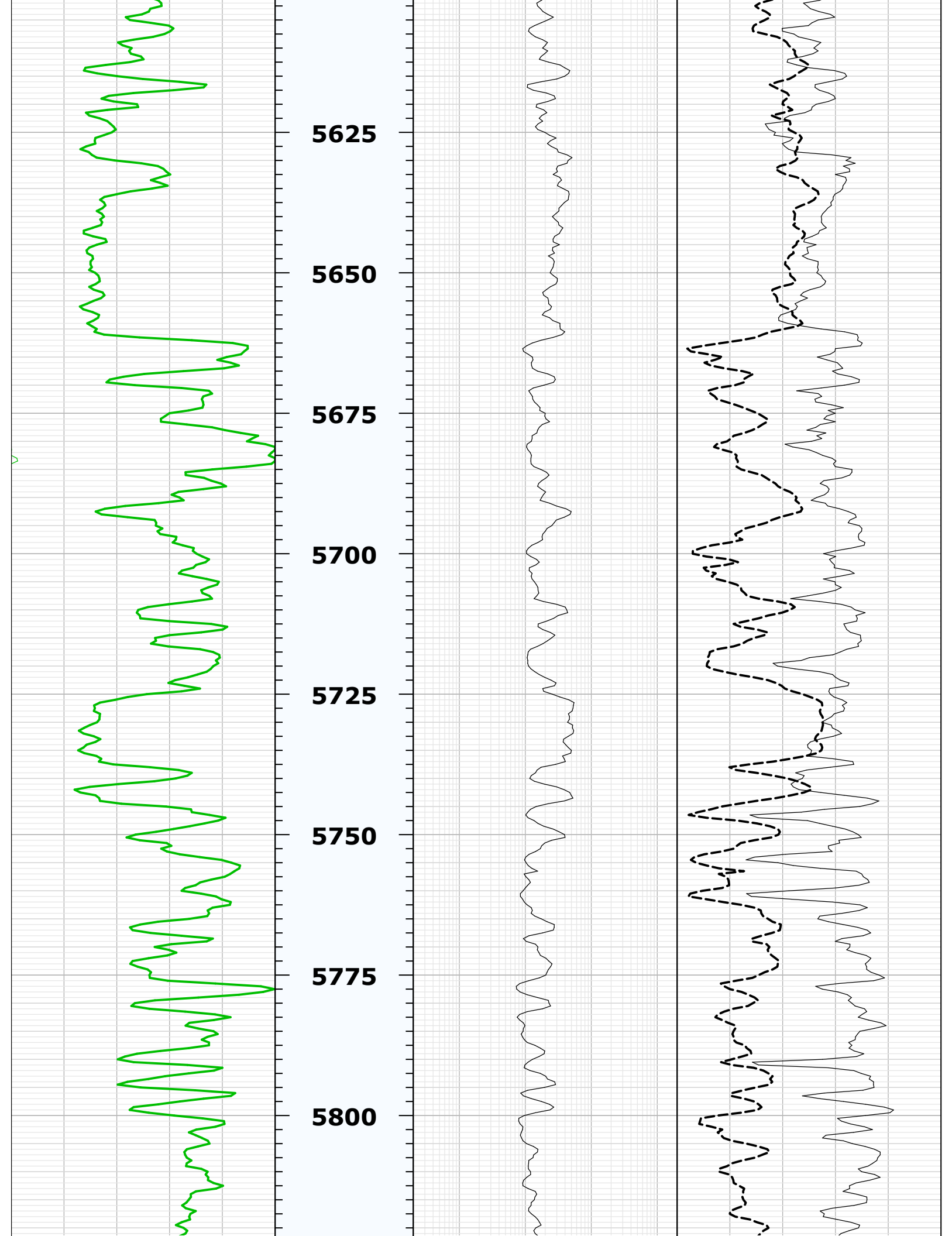


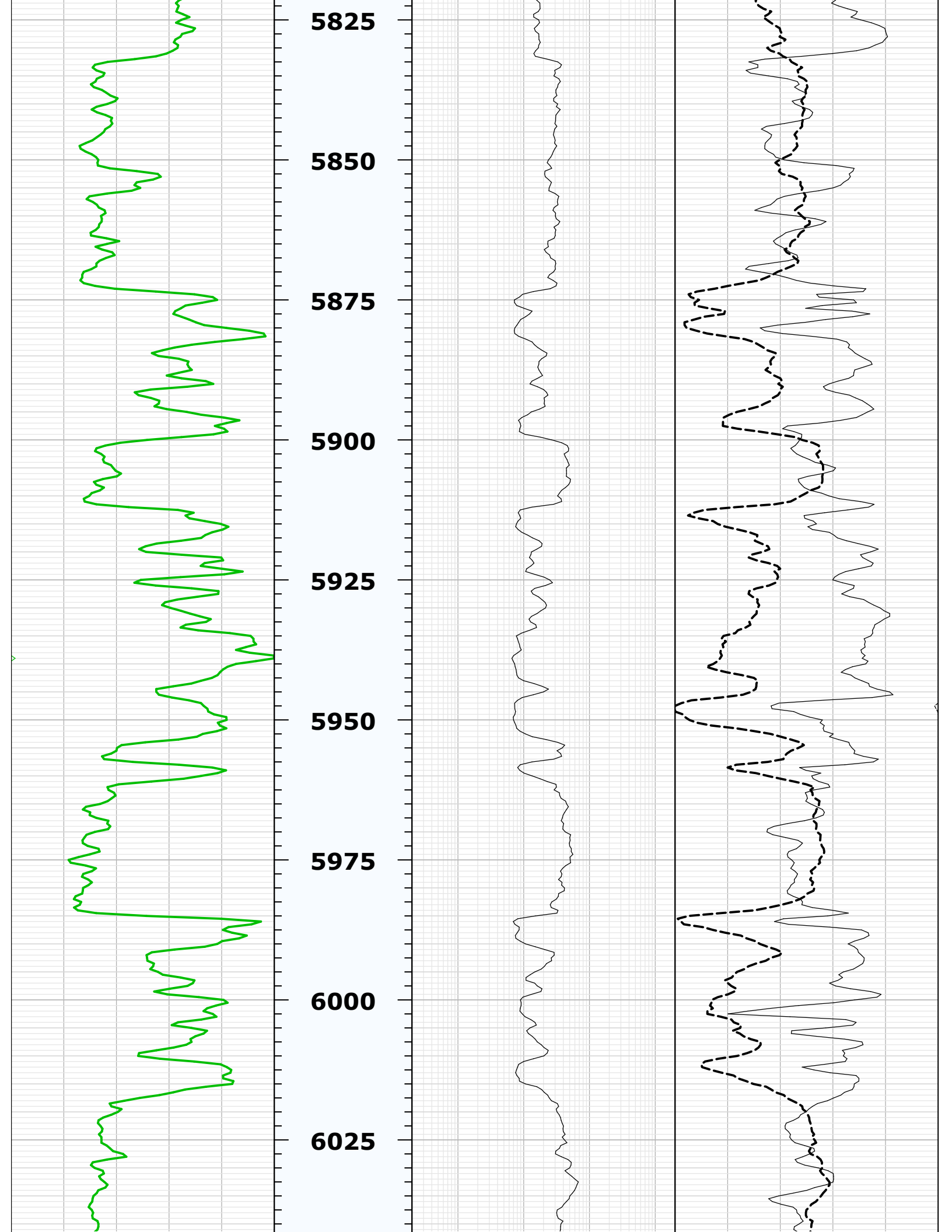


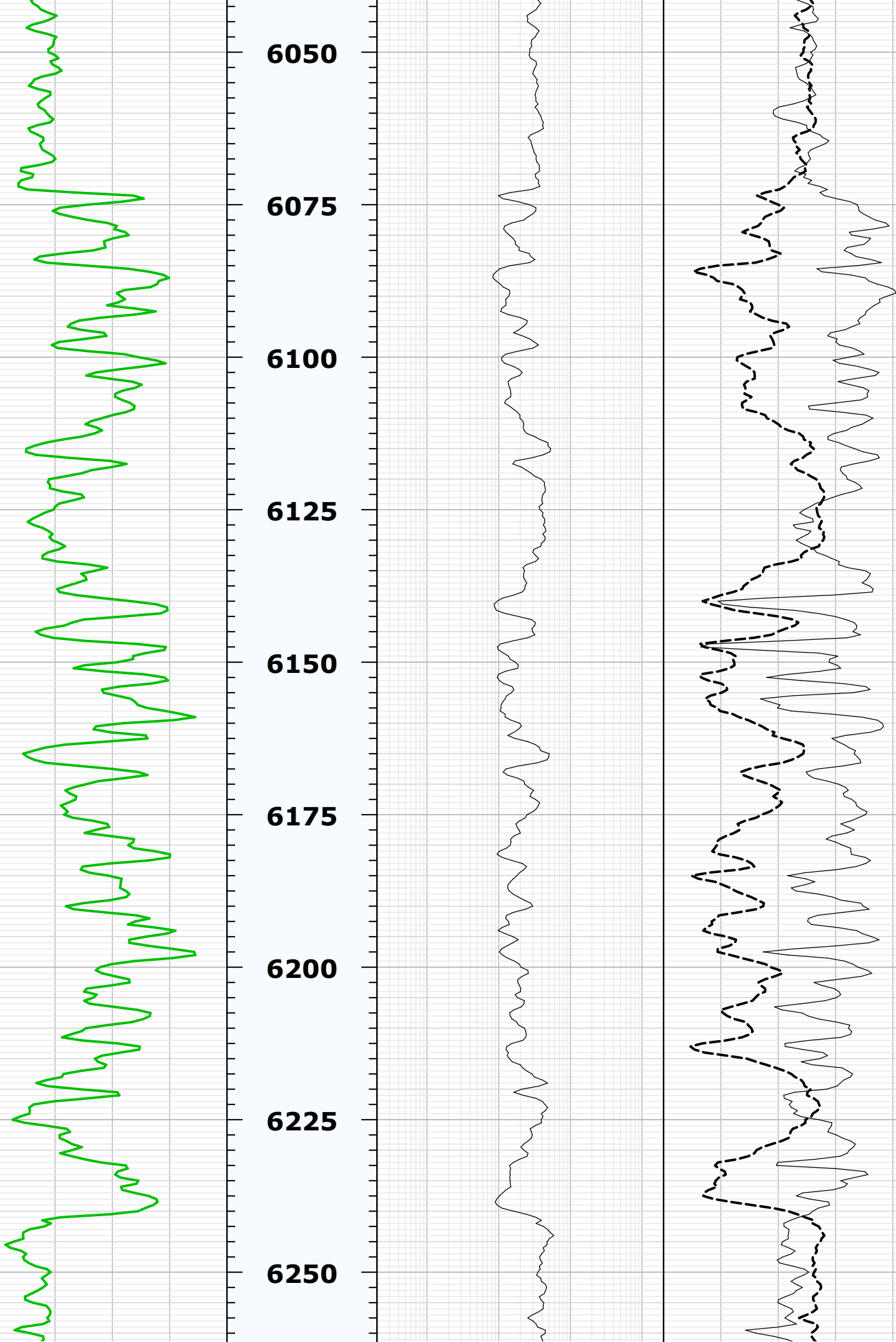


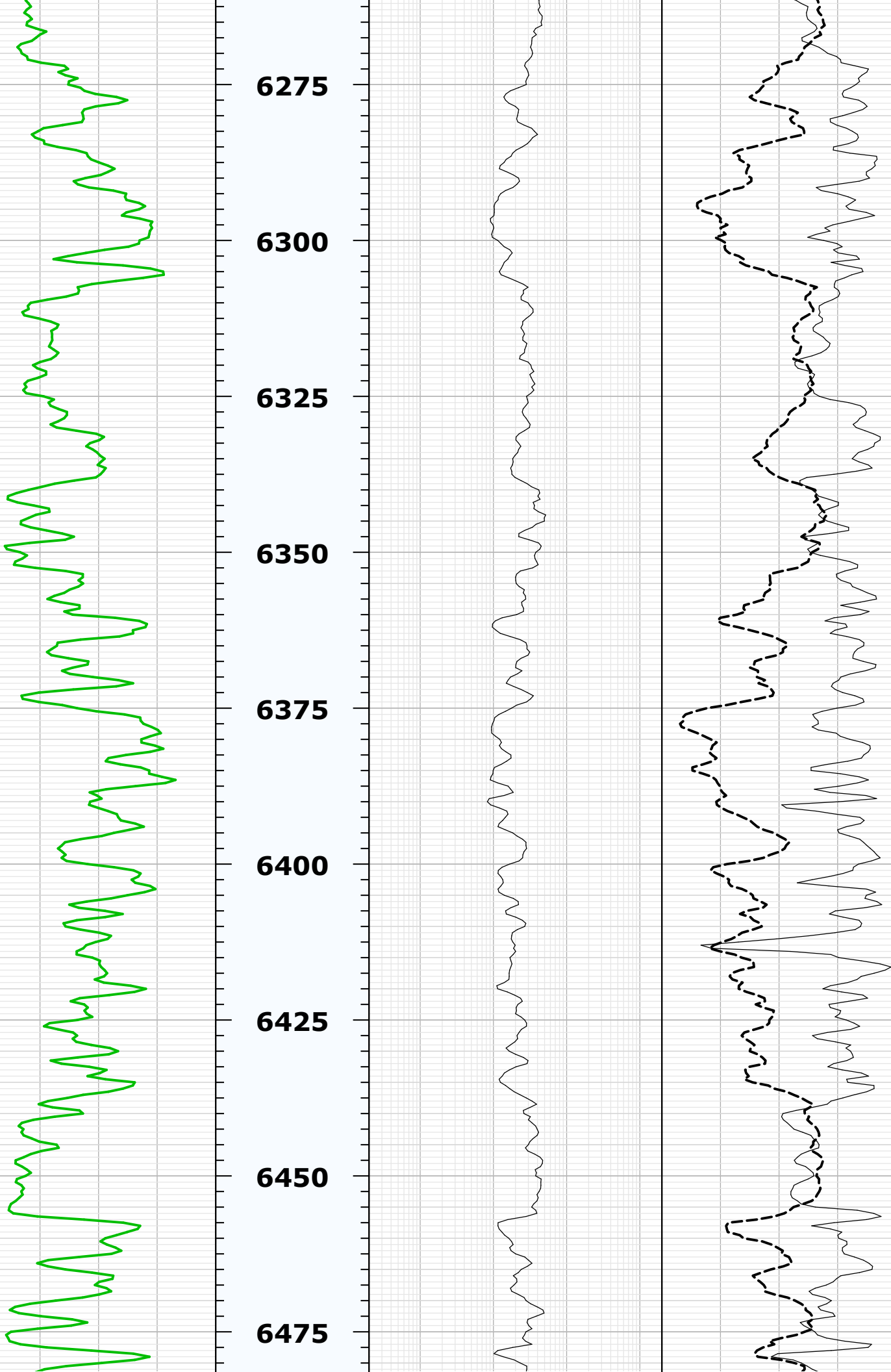


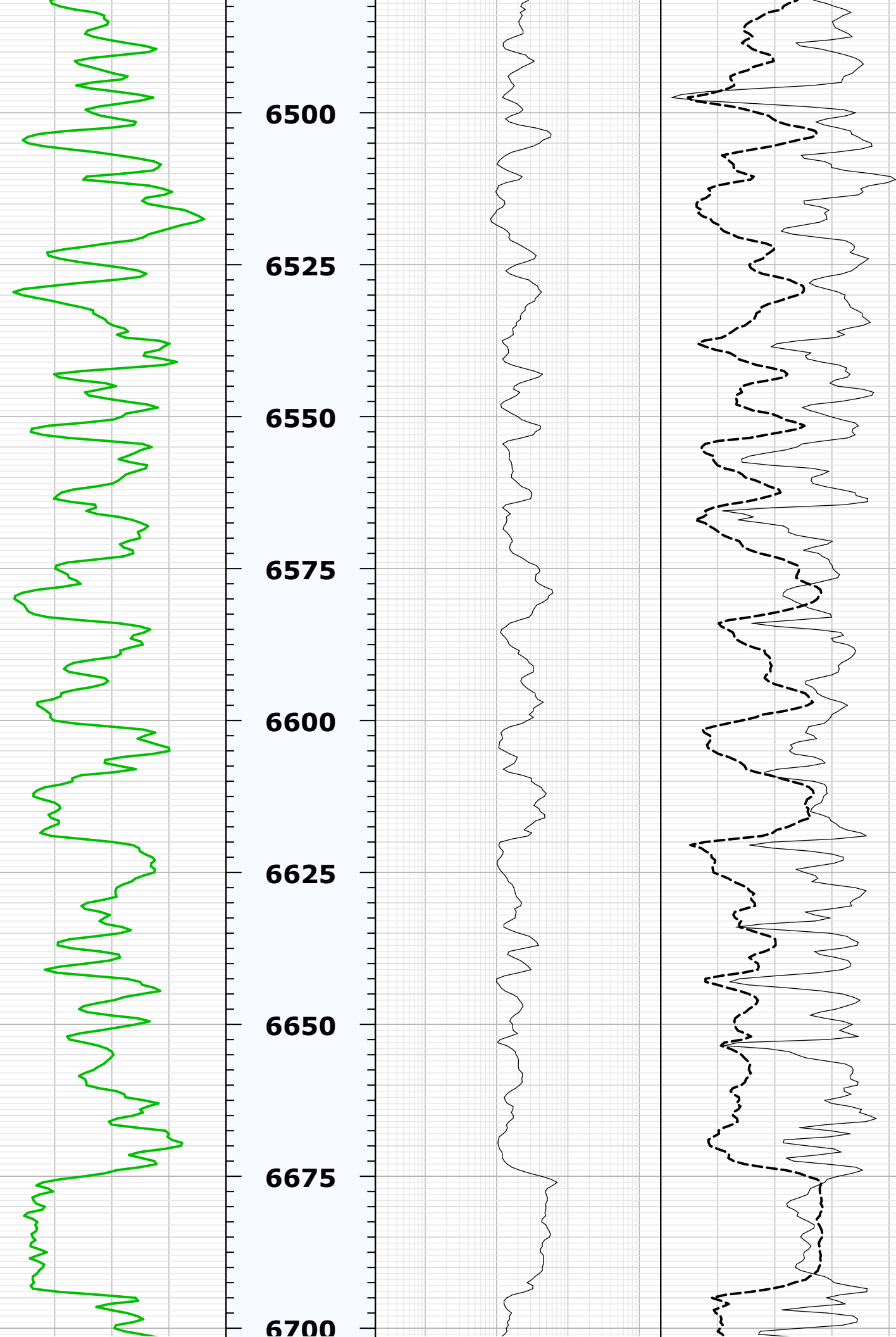


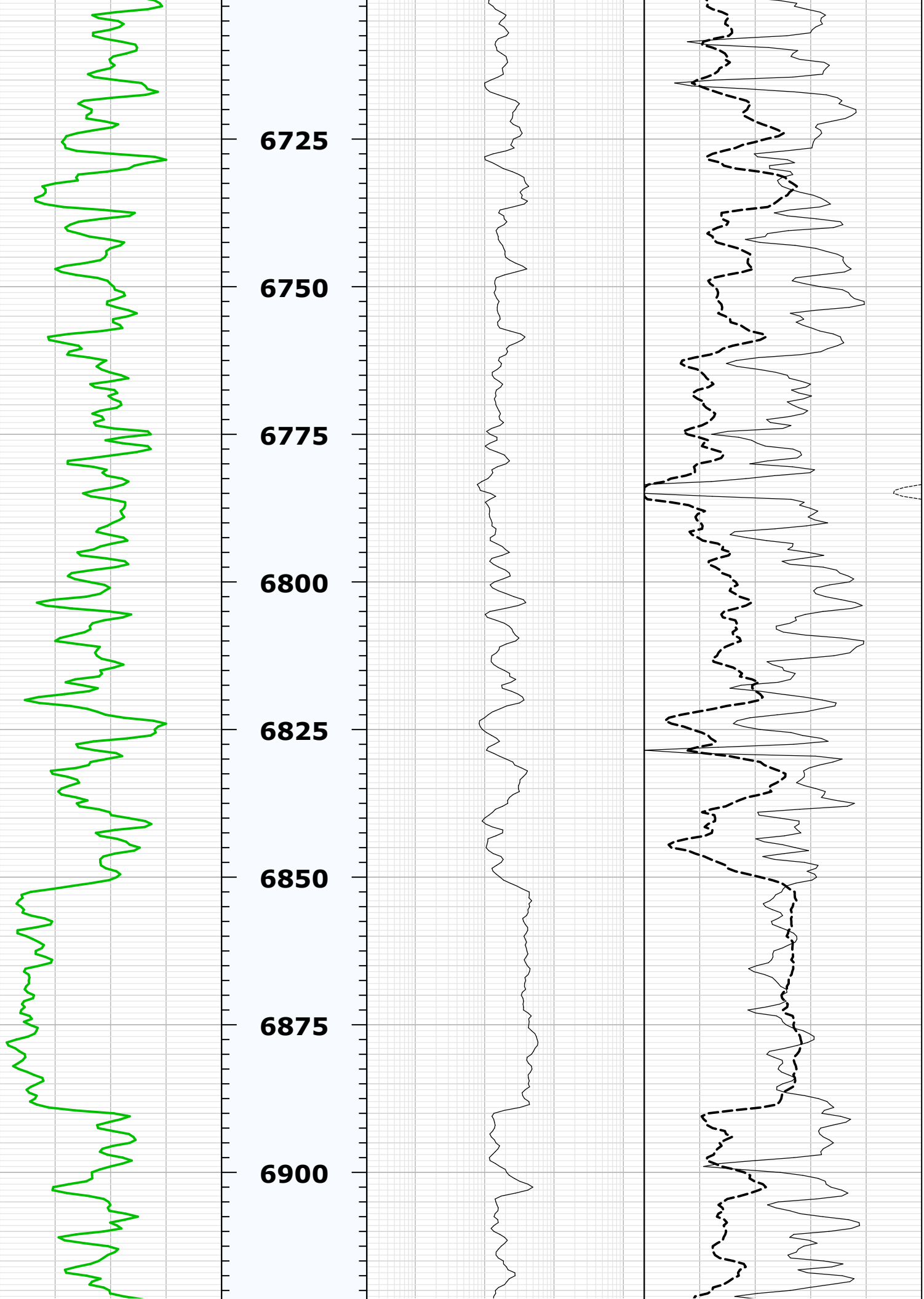


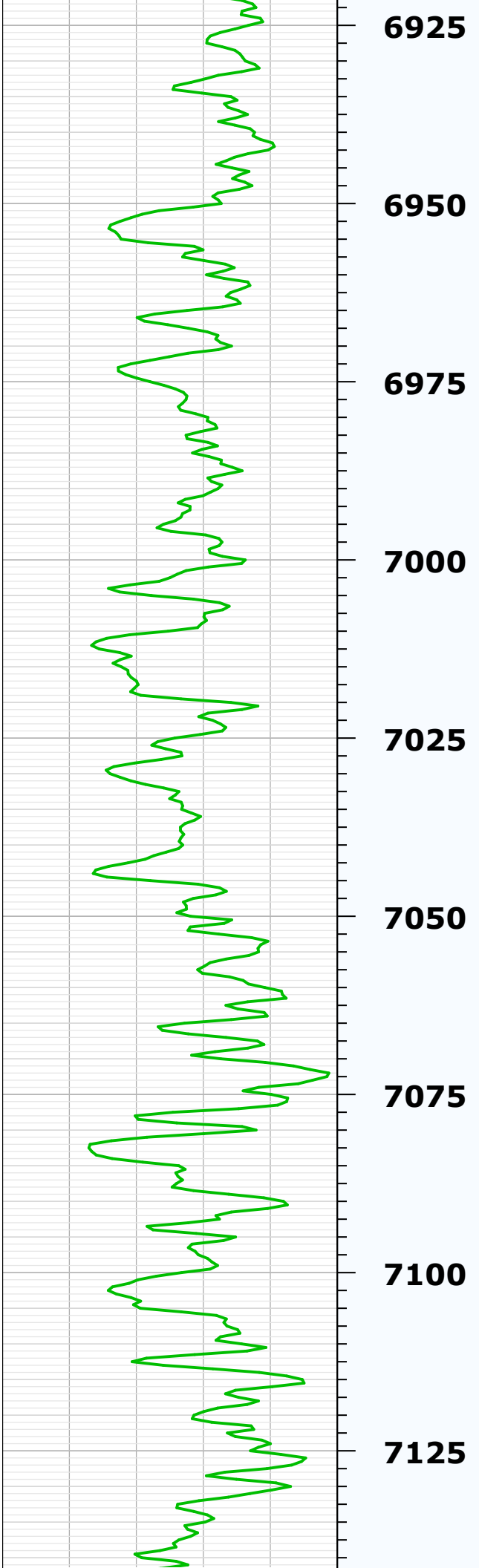
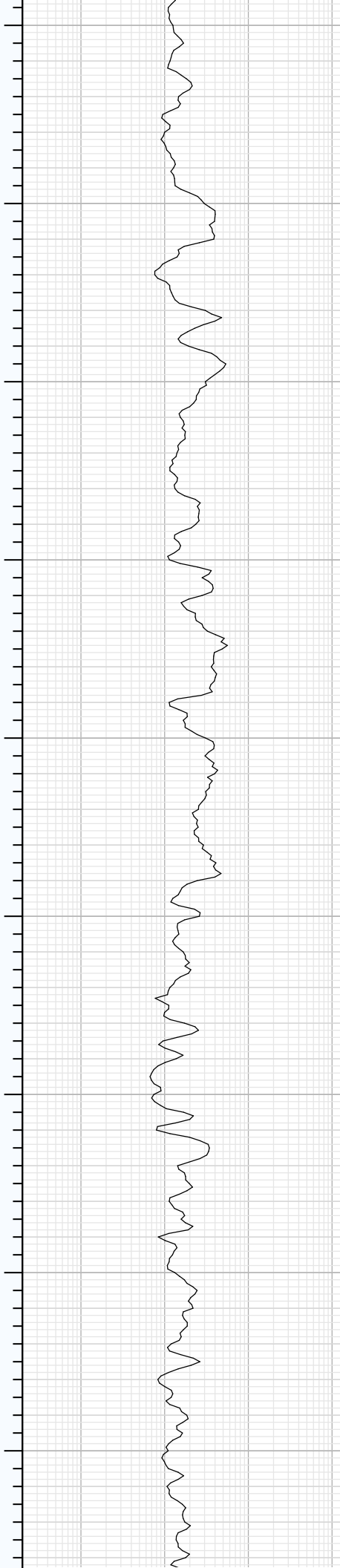
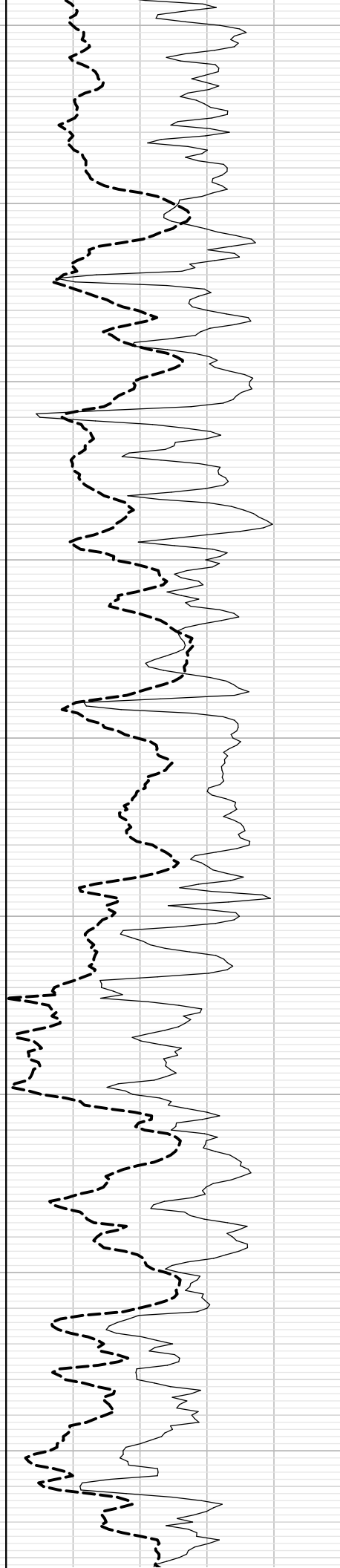


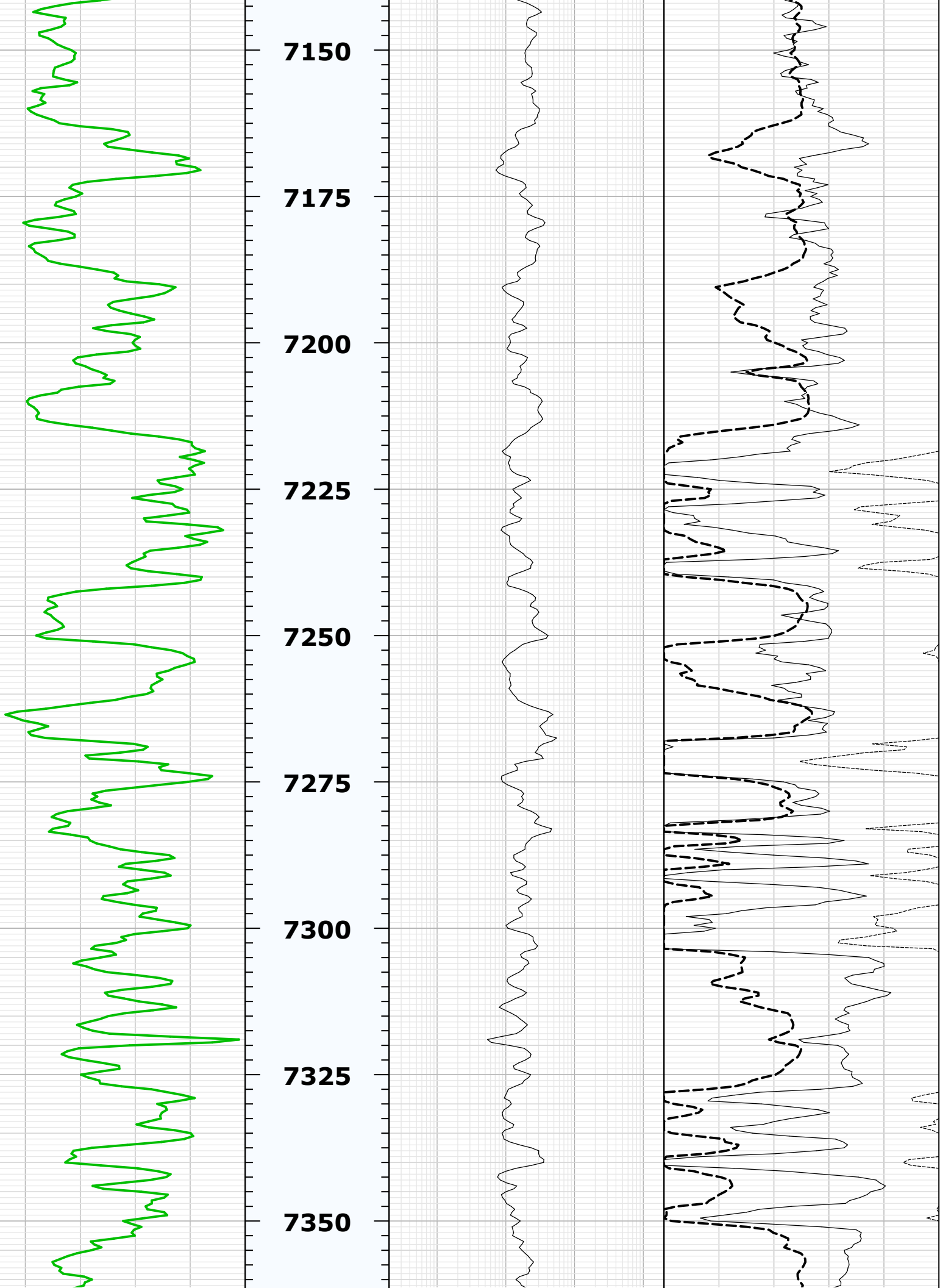


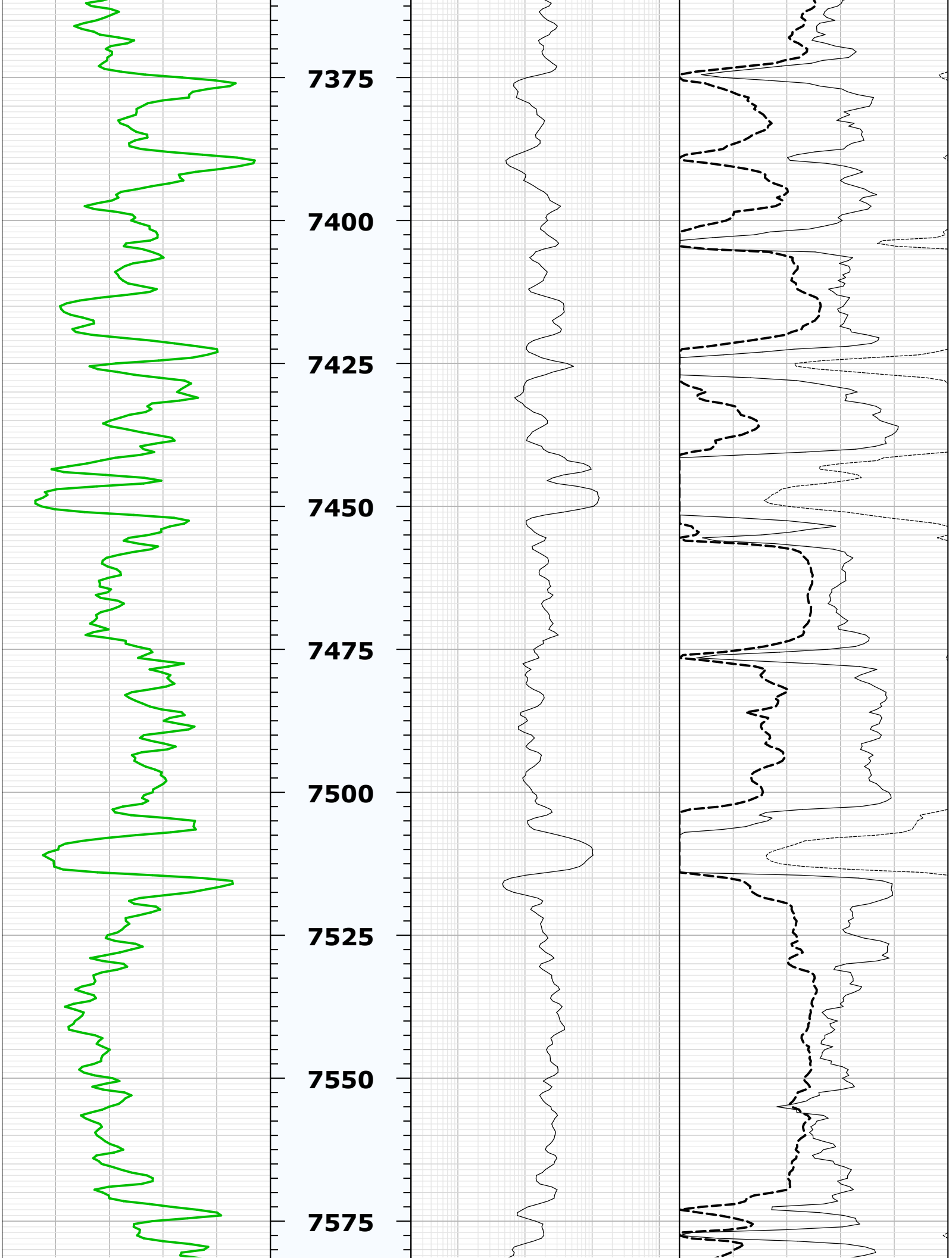


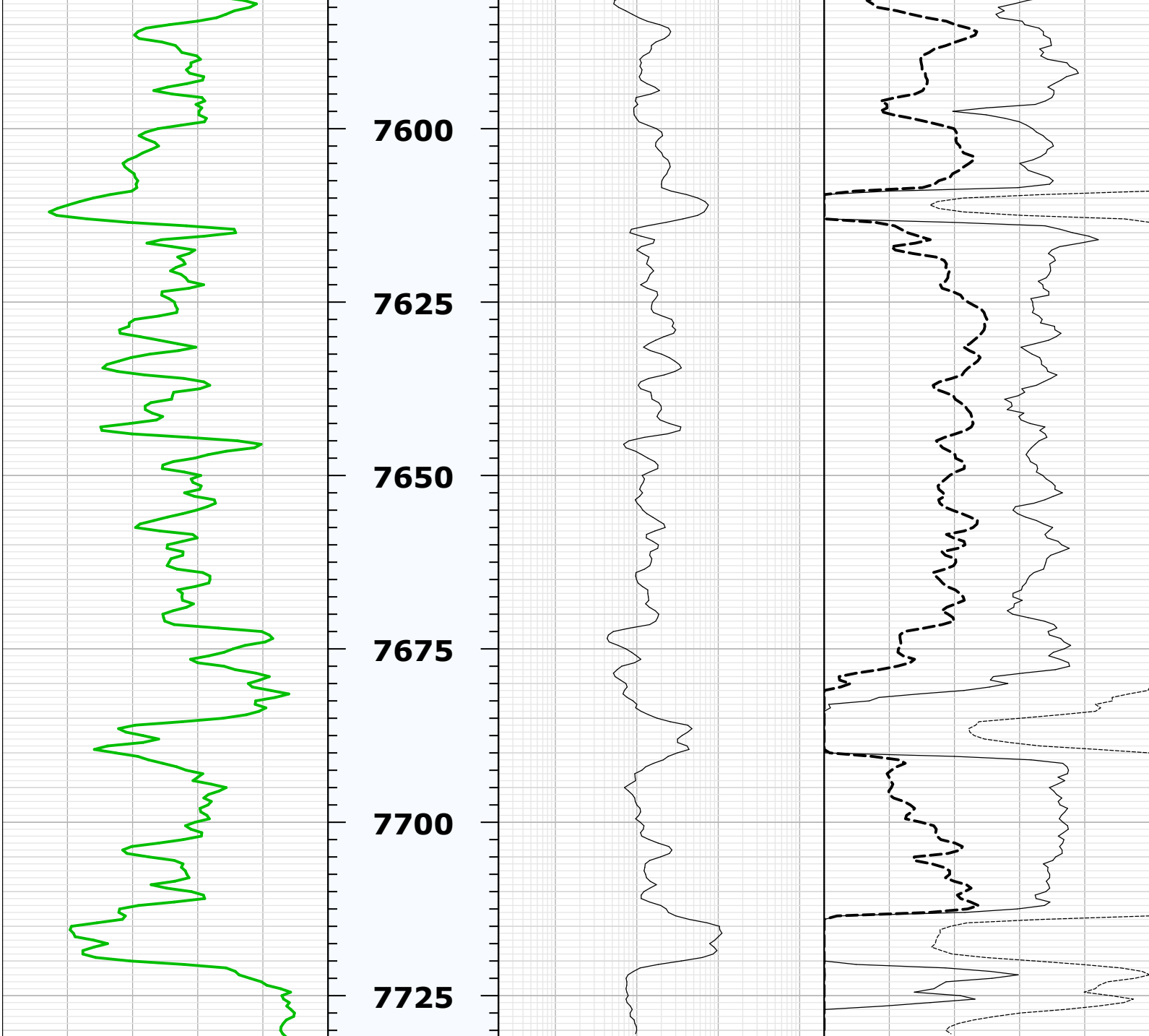












Company: TEP Rocky Mountain LLC

Well: Chevron GM 543-19

Field: Grand Valley

County: Garfield

State: Colorado

