

Sec 20, T6S, R96W
GM 531-19
Q201075 & RM-200857
Plan 3

Company Name: Terra Energy Partners, LLP
GM 531-19
Garfield County, CO
Rig: KB=24' @ 5771.80usft (H&P #318)
Created by: Chase Chambers
Date: 14:12, January 11 2021

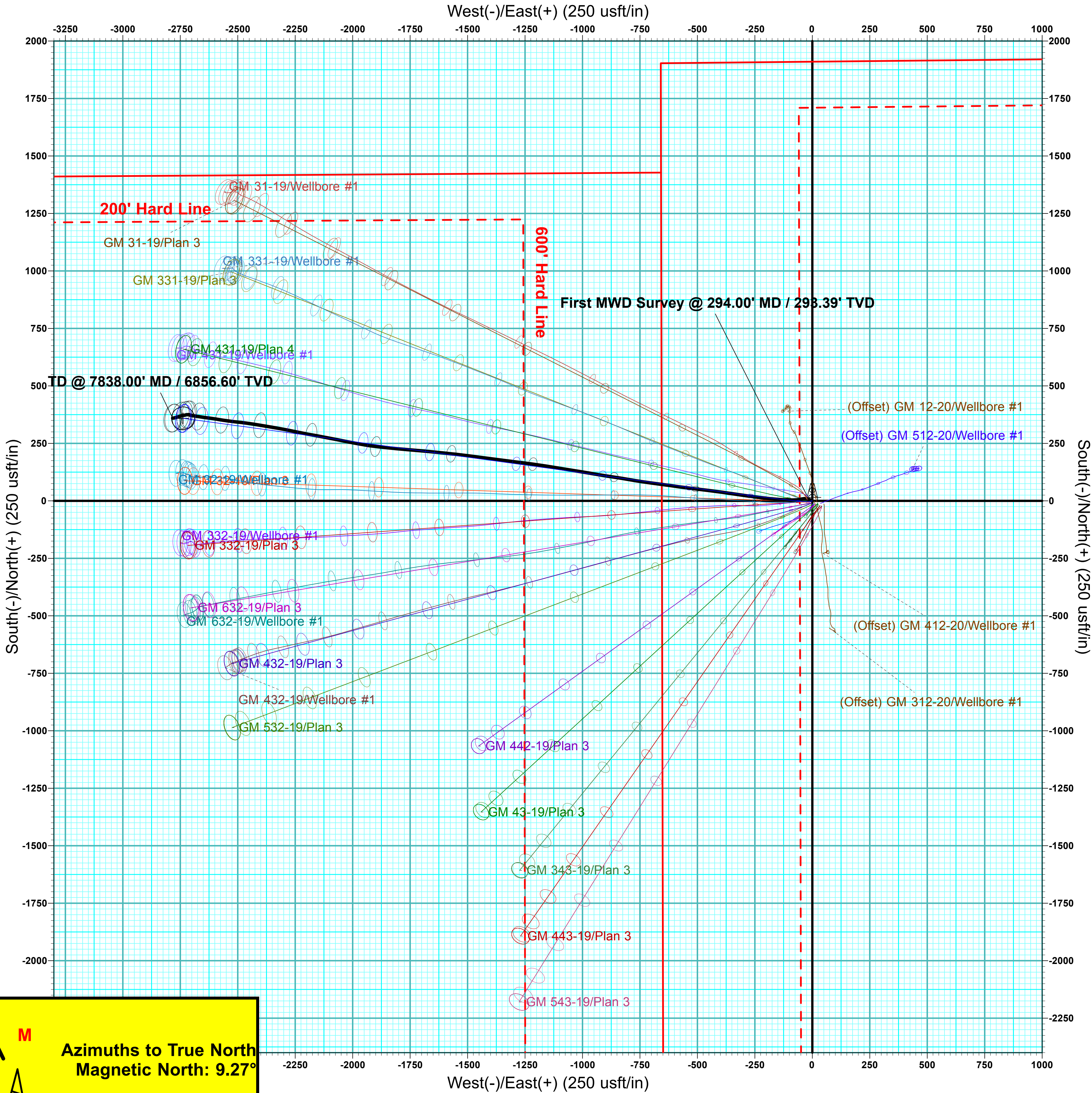
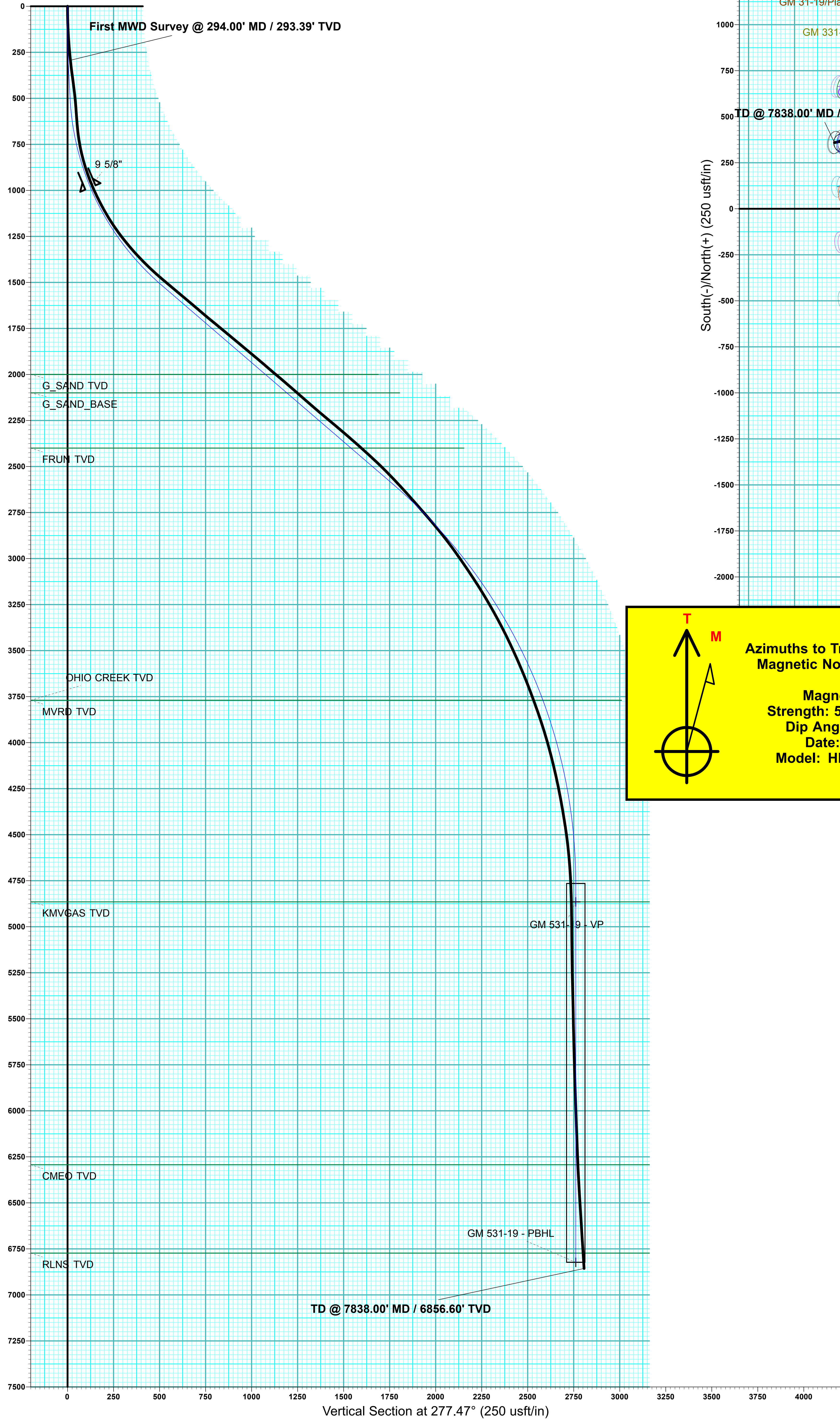
PROJECT DETAILS: Garfield County, CO

Geodetic System: US State Plane 1983
Datum: North American Datum 1983
Ellipsoid: GRS 1980
Zone: Colorado Central Zone
System Datum: Mean Sea Level



DESIGN TARGET DETAILS							
Name	TVD	+N/-S	+E/-W	Northing	Easting	Latitude	Longitude
GM 531-19 - VP	4865.00	358.95	-2737.94	1622562.90	2252664.50	39.512798	-108.149251
GM 531-19 - PBHL	6823.00	358.95	-2737.94	1622562.90	2252664.50	39.512798	-108.149251

WELL DETAILS: GM 531-19						
Ground Elevation:		5747.80				
+N/-S	+E/-W	Northing	Easting	Latitude	Longitude	
0.00	0.00	1622124.56	2255390.86	39.511813	-108.139546	

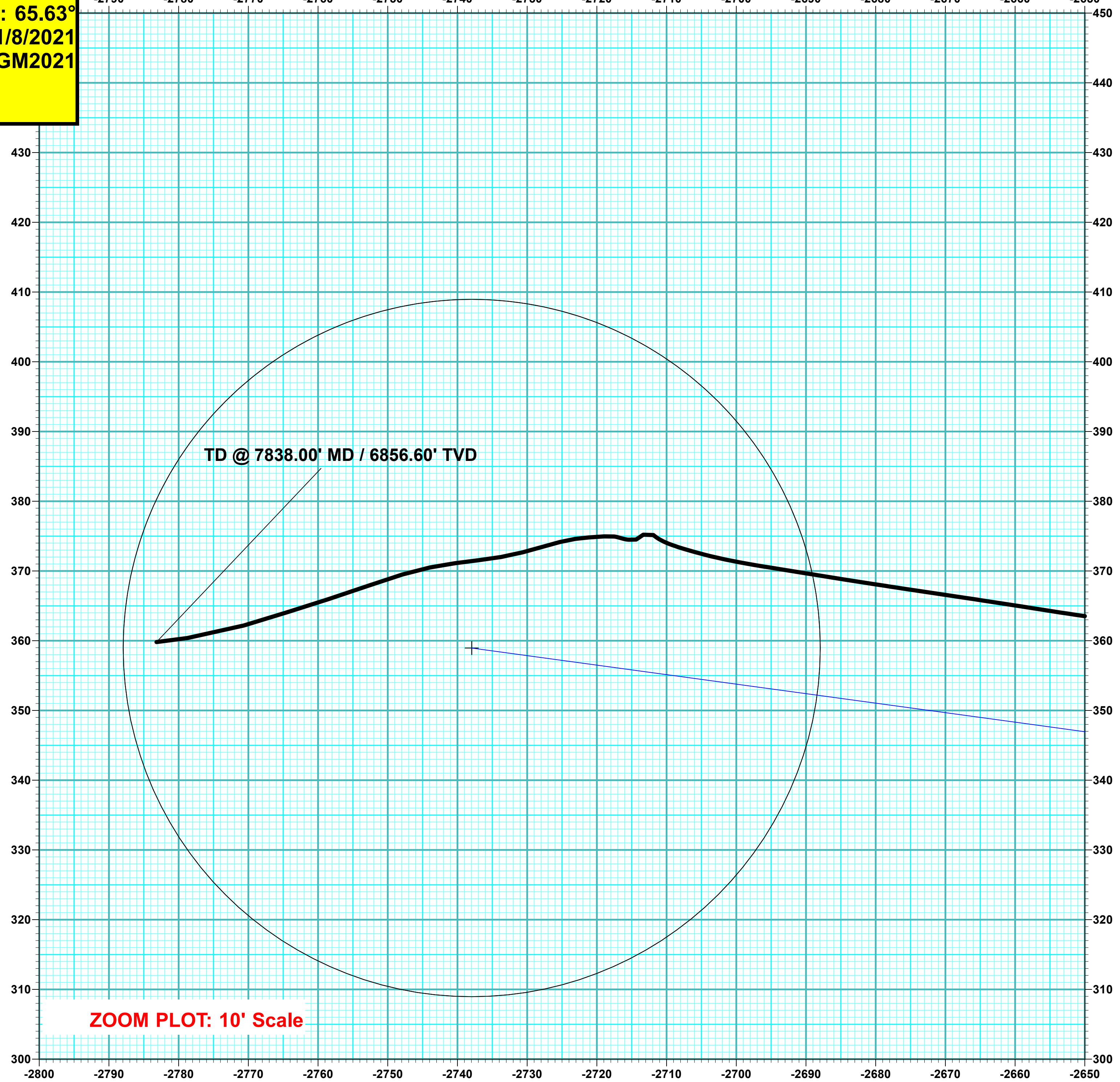


T

M

Azimuths to True North
Magnetic North: 9.27°

Magnetic Field
Strength: 51308.3nT
Dip Angle: 65.63°
Date: 1/8/2021
Model: HDGM2021



DESIGN ANNOTATIONS									
MD	Inc	Azi	TVD	+N/-S	+E/-W	VSect	Departure	Annotation	
180.00	0.00	0.00	180.00	0.00	0.00	0.00	0.00	Start Build 3.50	
265.71	3.00	260.00	265.68	-0.39	-2.21	2.14	2.24	EOB @ 3.00° Inc / 260.00° Azm	
500.36	3.00	260.00	500.00	-2.52	-14.30	13.85	14.52	Start DLS 4.00 TFO 18.61	
1661.82	49.31	277.76	1514.78	54.87	-507.87	510.69	511.66	EOB @ 49.31° Inc / 277.76° Azm	
3315.30	49.31	277.76	2592.83	224.25	-1750.10	1764.40	1765.39	Start Drop -2.00	
5780.73	0.00	0.00	4765.00	358.95	-2737.94	2761.37	2762.37	EOD @ Vertical	
7838.73	0.00	0.00	6823.00	358.95	-2737.94	2761.37	2762.37	TD @ 7838.73' MD / 6823.00' TVD	

ANNOTATIONS									
MD	Inc	Azi	TVD	+N/-S	+E/-W	VSect	Departure	Annotation	
294.00	6.37	293.31	293.39	6.46	-14.99	15.71	16.33	First MWD Survey @ 294.00' MD / 293.39' TVD	
7838.00	3.60	262.75	6856.60	359.82	-2783.17	2806.32	2816.38	TD @ 7838.00' MD / 6856.60' TVD	