



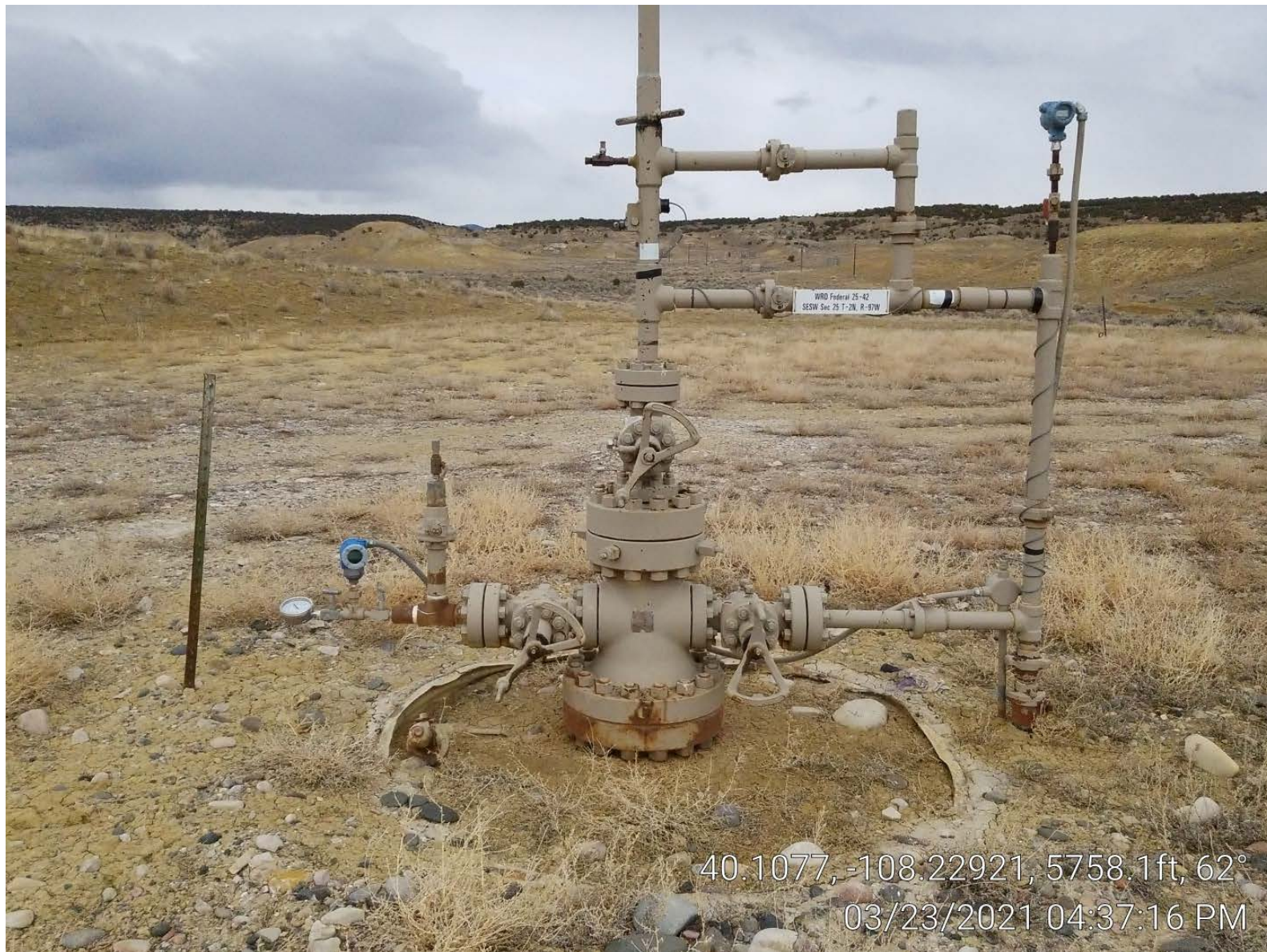
40.10773, -108.22968, 5759.2ft, 117°
03/23/2021 04:38:37 PM



COLORADO
Oil & Gas Conservation
Commission
Department of Natural Resources

Photo 1. Location.

WRD Federal 25-42
API: 05-103-10107



COLORADO
Oil & Gas Conservation
Commission
Department of Natural Resources

Photo 2. Well.

WRD Federal 25-42
API: 05-103-10107



40.10747, -108.22936, 5756.4ft, 127°
03/23/2021 04:33:46 PM



COLORADO
Oil & Gas Conservation
Commission
Department of Natural Resources

Photo 3. Separator & meter building.

WRD Federal 25-42
API: 05-103-10107



40.10749, -108.22925, 5753.3ft, 160°
03/23/2021 04:34:13 PM



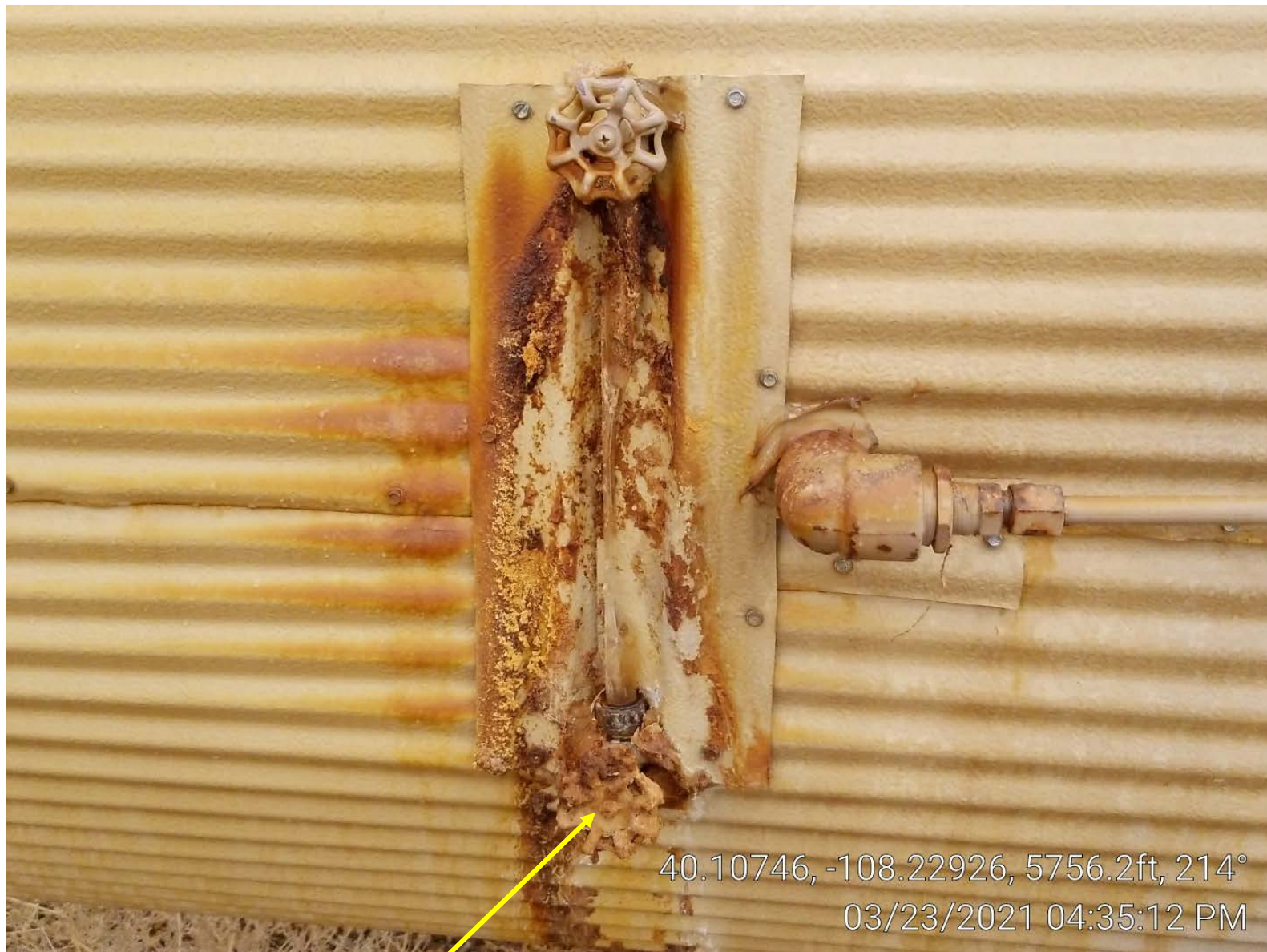
COLORADO
Oil & Gas Conservation
Commission
Department of Natural Resources

Photo 4. Separator.

WRD Federal 25-42
API: 05-103-10107



40.10747, -108.22925, 5752.2ft, 171°
03/23/2021 04:34:25 PM





40.10758, -108.22951, 5758.1ft, 342°
03/23/2021 04:38:03 PM



COLORADO
Oil & Gas Conservation
Commission
Department of Natural Resources

Photo 7. Tanks.

WRD Federal 25-42
API: 05-103-10107



40.10758, -108.22947, 5764.0ft, 87°
03/23/2021 04:39:02 PM



COLORADO
Oil & Gas Conservation
Commission
Department of Natural Resources

Photo 8. Debris.

WRD Federal 25-42
API: 05-103-10107