

Final Reclamation Inspection

March 23, 2021

Operator: SOVEREIGN OPERATING COMPANY LLC - #10383

Location ID: 321511

Inspection Document #: 697502691

Broomfield County, CO

SESW Section 8 T1S R68W

Chris Binschus
Reclamation Specialist, COGCC



COLORADO
**Oil & Gas Conservation
Commission**

Department of Natural Resources

Inspection Photos

Location Name: BROZOVICH #MA 8-14J

Location ID: 321511

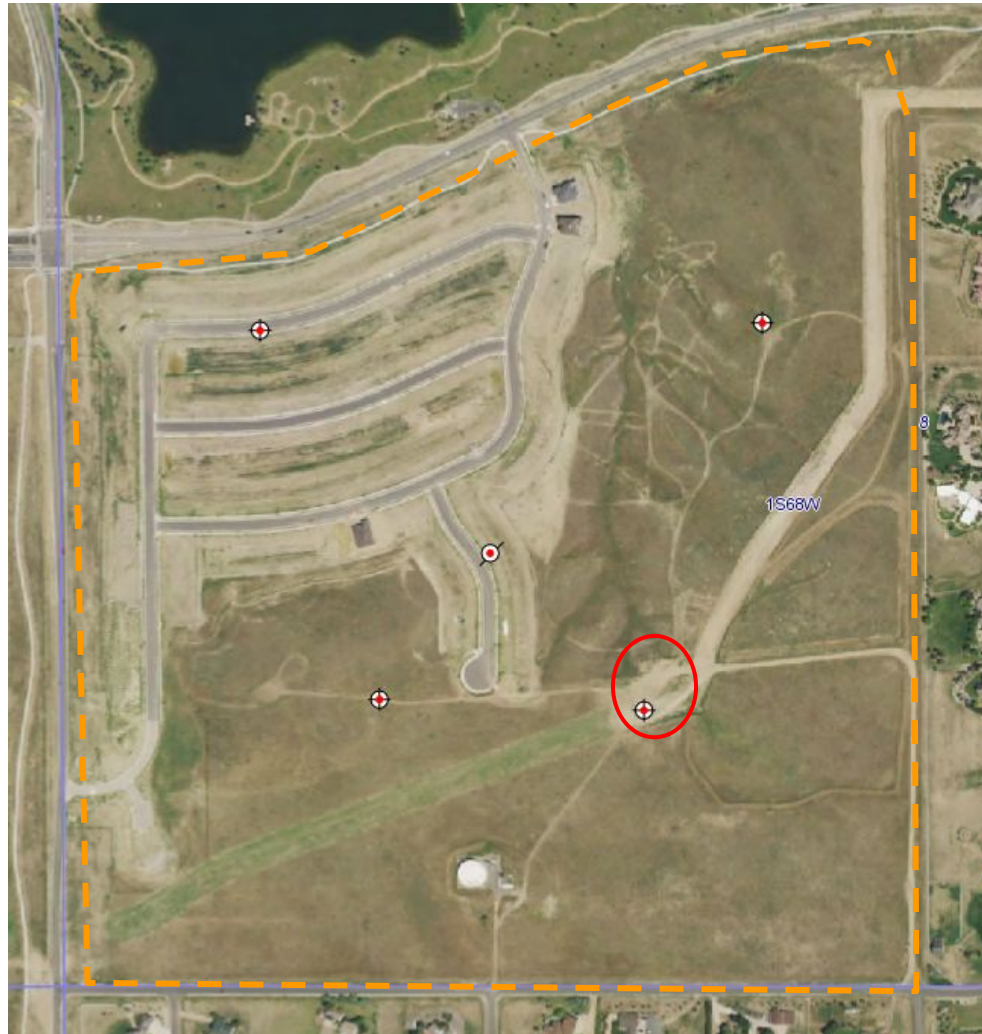


Photo 1. COGCC aerial imagery from 2019 illustrates the well location/tank battery (red circle) in relation to the Anthem Neighborhood #5 housing development (orange dashed area= 132 acres). Based on the Anthem Filing No.24 Site Development Plan, the well location and the associated access road will be seeded- see Photo 2. All other two-tracks not associated with oil and gas will also be seeded.



COLORADO

**Oil & Gas Conservation
Commission**

Department of Natural Resources

Inspection Number: 697502691

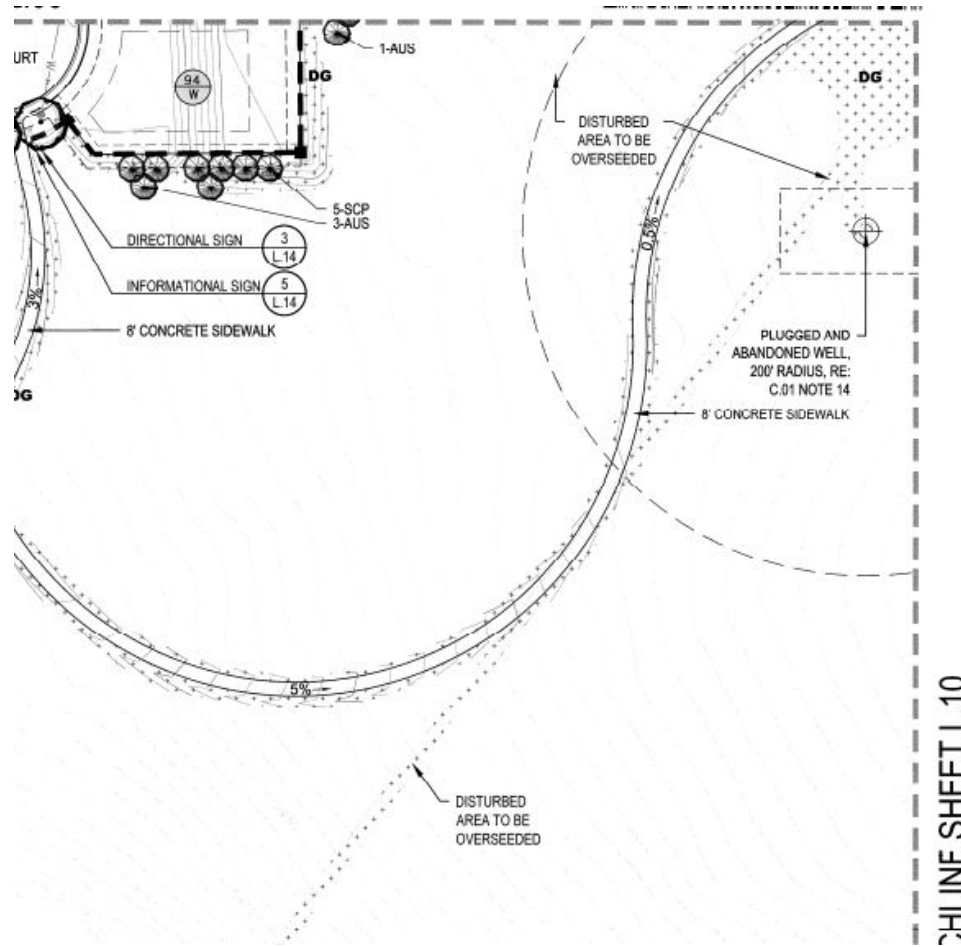


Photo 2. Photo taken from the Anthem Filing No.24 Site Development Plan illustrating the well/tank battery location and the associated access road will be seeded. The well location also has a 50'x100' work-over easement.

Inspection Photos

Location Name: BROZOVICH #MA 8-14J

Location ID: 321511



Photo 3. Photo taken from the well/tank battery location, facing South. Photo illustrates all equipment has been removed from the location.



COLORADO

**Oil & Gas Conservation
Commission**

Department of Natural Resources

Inspection Number: 697502691

Inspection Photos
Location Name: BROZOVICH #MA 8-14J
Location ID: 321511



Photo 4. Photo taken from the well/tank battery location, facing West. Photo illustrates an open space path under construction.



Inspection Photos

Location Name: BROZOVICH #MA 8-14J

Location ID: 321511



Photo 5. Photo taken from the well/tank battery location, facing North. Photo illustrates an open space path under construction.





Photo 6. Photo taken from the eastern housing development boundary, facing East. Photo illustrates the Anthem development boundary will be connected to the Spruce Meadows Equestrian and Pedestrian Trail.