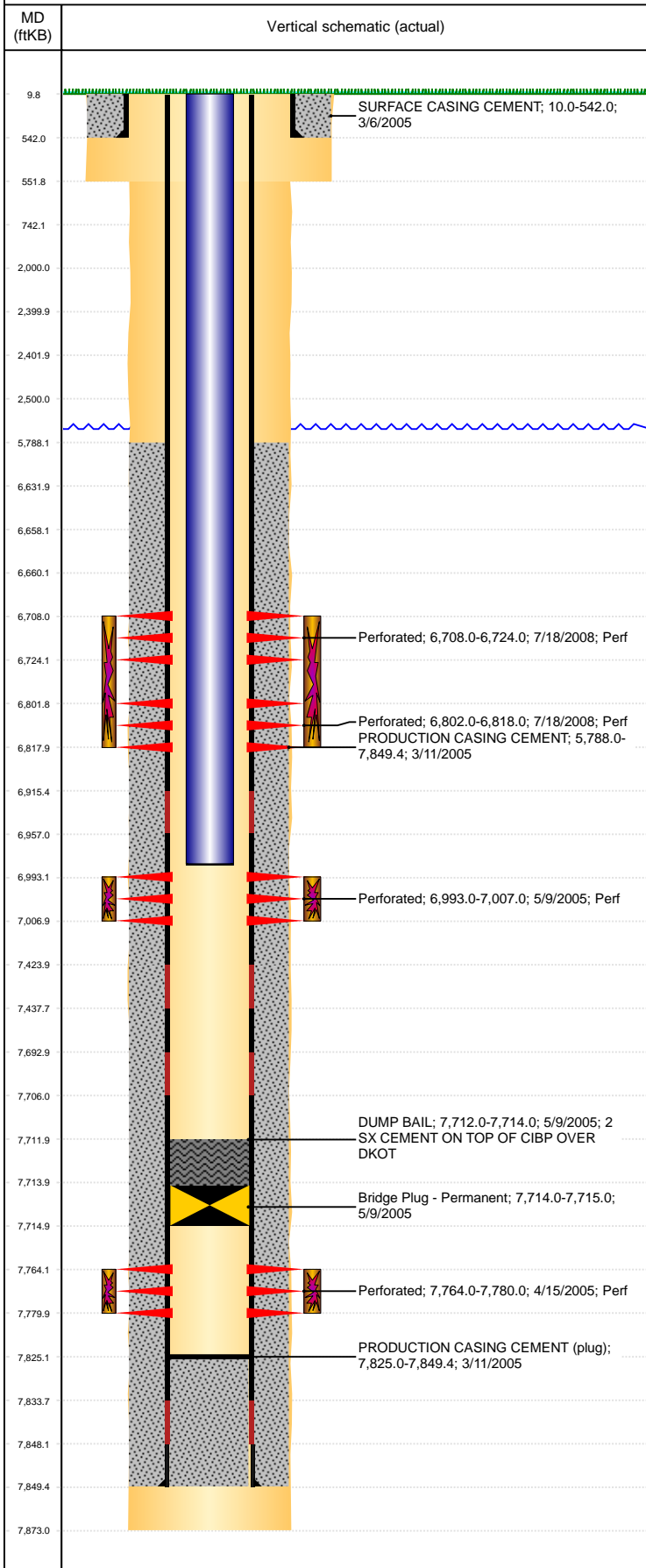


Well Name: COX C08-19D

VERTICAL, ORIGINAL HOLE, 3/23/2021 10:09:07 PM



Well Header									
API 05-123-22520		Business Unit DJ BASIN			District 15		Well Config VERTICAL		
KB - GL / MSL (ft... 10.00		Spud Date 3/5/2005		P & A Date		Well Production Status SI			SoRT No
Comment ORIG DKT FRAC VIA TRIPLE ENTRY SCREENED OUT, UNDER CIBP & 2 SX CMT- DKOT NEVER PRODUCED. STATE SHOWS SHUT IN SINCE JAN 2016.									
Surface Location (Congressional)									
Qtr 3 NW	Qtr 4 NW	Section 8	Twshp 4	Twshp... N	Range 64	Rng E/... W	Actual Latitude (°) 40.33052328	Actual Longitude (°) -104.57981569	
Wellbore Sections									
Section Des			Size (in)			Act Top, MD (ftKB)		Act Btm, MD (ftKB)	
SURFACE			12 1/4			10		552	
PRODUCTION			7 7/8			552		7,873	
Casing Strings									
Csg Des		Run Date		OD (in)	Wt/Len (lb/ft)	Grade	Top, MD (ftKB)	MD (ftKB)	
Surface		3/5/2005		8 5/8	24.00	J-55	10.0	542.0	
Production		3/10/2005		4 1/2	11.60	M-80	10.0	7,849.4	
Cement									
Des				Start Date		Top (ftKB)		Btm (ftKB)	
SURFACE CASING CEMENT				3/6/2005		10.0		542.0	
PRODUCTION CASING CEMENT				3/11/2005		5,788.0		7,849.4	
DUMP BAIL				5/9/2005		7,712.0		7,714.0	
Zone Statuses									
Zone Name	Status Date	Status	Fluid Type	Job				Prod Method	
DAKOTA	5/9/2005	SI	Water	DRILLING/COMPLETION - ORIGINAL, 3/5/2005...				Flowing	
CODELL	9/4/2008	PR		RECOMPLETION, 7/16/2008 06:00					
CODELL	2/9/2010	PR							
NIOBRARA	6/8/2016	SI							
NIOBRARA	9/22/2016	SI							
Perforation Data									
Linked Zone		Bnch/Stg	Entered Shot Total	Top (ftKB)		Btm (ftKB)		Date	
NIOBRARA, ORIGINAL HOLE		A	64	6,708.00		6,724.00		7/18/2008	
NIOBRARA, ORIGINAL HOLE		B	64	6,802.00		6,818.00		7/18/2008	
CODELL, ORIGINAL HOLE			56	6,993.00		7,007.00		5/9/2005	
DAKOTA, ORIGINAL HOLE			64	7,764.00		7,780.00		4/15/2005	
Stimulation Intervals									
Zone			Start Date			Top (ftKB)		Btm (ftKB)	
NIOBRARA, ORIGINAL HOLE			9/3/2008			6,708.0		6,818.0	
CODELL, ORIGINAL HOLE			5/26/2005			6,993.0		7,007.0	
DAKOTA, ORIGINAL HOLE			4/15/2005			7,764.0		7,780.0	
Other In Hole									
Run Date	Des			Make		OD (in)	Top (ftKB)	Btm (ftKB)	
5/9/2005	Bridge Plug - Permanent					3.99	7,714.0	7,715.0	
Logs									
Date		Type				Top, MD (ftKB)		Btm, MD (ftKB)	
3/10/2005		COMPENSATED DENSITY NEUTRON MICROLOG				3,500.0		7,838.0	
3/10/2005		DUAL INDUCTION GUARD LOG GAMMA RAY				580.0		7,858.0	
3/18/2005		GAMMA RAY CCL CEMENT BOND VDL				5,600.0		7,822.0	
1/20/2017		GYRO				0.0		6,900.0	
Plug Back Total Depths									
Date		Type		Com				Depth (ftKB)	
3/11/2005		SHOE JOINT		SHOE JOINT				7,834.0	
3/18/2005				DEPTH LOGGER				7,825.0	