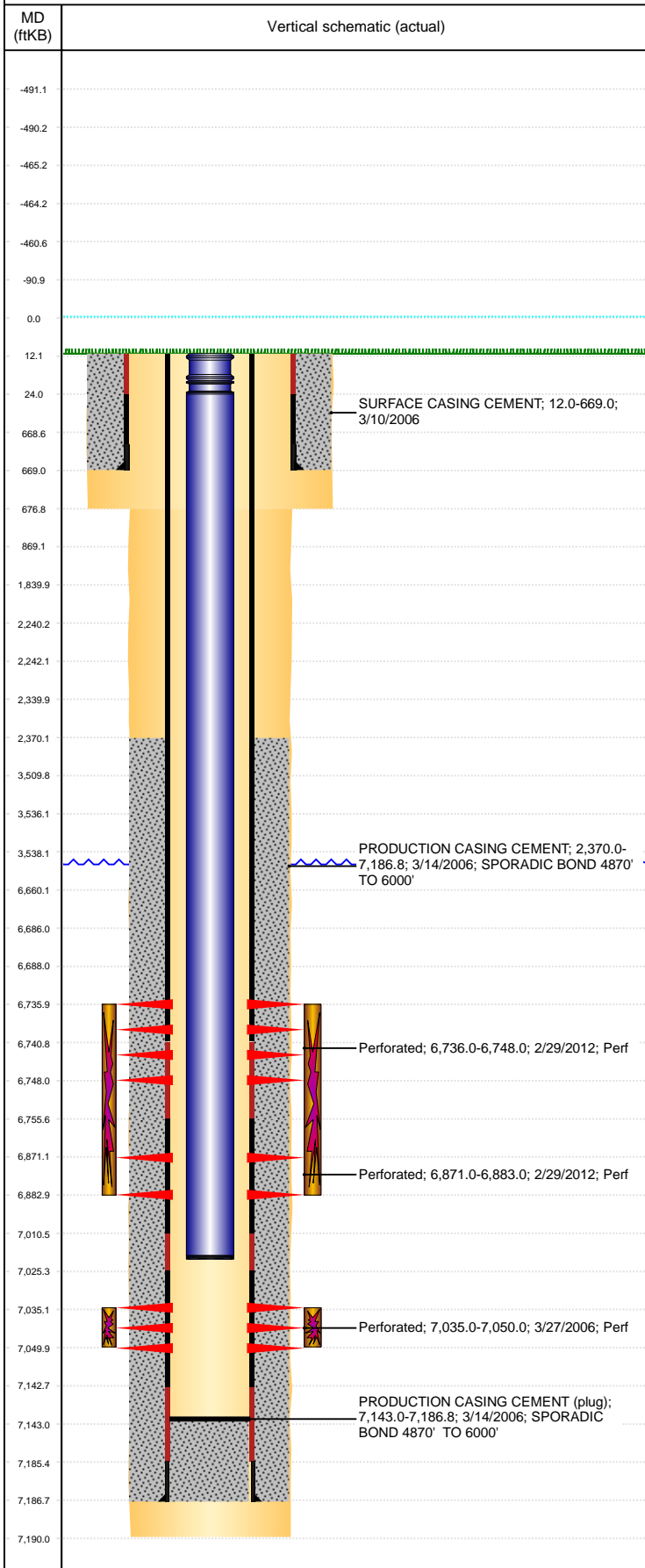


Well Name: SIAN E27-05

VERTICAL, ORIGINAL HOLE, 3/22/2021 12:16:14 PM



Well Header									
API 05-123-23631		Business Unit DJ BASIN			District 15		Well Config VERTICAL		
KB - GL / MSL (ft... 12.00		Spud Date 3/10/2006		P & A Date		Well Production Status PR			SoRT No
Comment WELL ORIGINALLY NOTED TO BE "DEVIATED" BASED ON SURVEYS. NO BOTTOM HOLE INFORMATION AVAILABLE									
Surface Location (Congressional)									
Qtr 3 SW	Qtr 4 NW	Section 27	Twnshp 6	Twنش... N	Range 65	Rng E/... W	Actual Latitude (°) 40.45838189	Actual Longitude (°) -104.65583671	
Wellbore Sections									
Section Des			Size (in)			Act Top, MD (ftKB)		Act Btm, MD (ftKB)	
SURFACE			12 1/4			12		677	
PRODUCTION			7 7/8			677		7,190	
Casing Strings									
Csg Des			Run Date		OD (in)	Wt/Len (lb/ft)	Grade	Top, MD (ftKB)	MD (ftKB)
Surface			3/10/2006		8 5/8	24.00	J-55	12.0	669.0
PRODUCTION			3/14/2006		4 1/2	11.60	M-80	12.0	7,186.8
Cement									
Des					Start Date		Top (ftKB)		Btm (ftKB)
SURFACE CASING CEMENT					3/10/2006		12.0		669.0
PRODUCTION CASING CEMENT					3/14/2006		2,370.0		7,186.8
Zone Statuses									
Zone Name	Status Date	Status	Fluid Type	Job				Prod Method	
CODELL	4/6/2006	PR		DRILLING/COMPLETION - ORIGINAL, 2/1/2006...					
CODELL	3/1/2012	PR		RE-FRAC & RECOMPLETE, 2/22/2012 06:00					
NIOBRARA	3/1/2012	PR		RE-FRAC & RECOMPLETE, 2/22/2012 06:00					
Perforation Data									
Linked Zone			Bnch/Stg	Entered Shot Total	Top (ftKB)		Btm (ftKB)		Date
NIOBRARA, ORIGINAL HOLE				24	6,736.00		6,748.00		2/29/2012
NIOBRARA, ORIGINAL HOLE				24	6,871.00		6,883.00		2/29/2012
CODELL, ORIGINAL HOLE				60	7,035.00		7,050.00		3/27/2006
Stimulation Intervals									
Zone				Start Date		Top (ftKB)		Btm (ftKB)	
NIOBRARA, ORIGINAL HOLE				2/29/2012		6,736.0		6,883.0	
CODELL, ORIGINAL HOLE				4/4/2006		7,035.0		7,050.0	
CODELL, ORIGINAL HOLE				2/29/2012		7,035.0		7,050.0	
Other In Hole									
Run Date		Des			Make		OD (in)	Top (ftKB)	Btm (ftKB)
Logs									
Date		Type				Top, MD (ftKB)		Btm, MD (ftKB)	
3/14/2006		COMPENSATED DENSITY				2,500.0		7,190.0	
3/14/2006		INDUCTION				669.0		7,190.0	
3/27/2006		CBL/CCL/GR				2,250.0		7,116.0	
9/30/2015		GYRO				10.0		6,950.0	
Plug Back Total Depths									
Date		Type			Com				Depth (ftKB)
2/23/2012		FILL			B/S 217JTS TBG W/9.21' IN ON 217JT				7,143.0
3/20/2012		FILL			RIH W/217JTS TAGGED AT 7143' W/217JTS 4.16' IN.				7,143.0